

Keller's Radio Call Book and Log

Vol. 5, No. 8

Winter, 1929-1930

THE RADIO
BOOK THAT
IS KEPT UP
TO DATE

561
CHANGES
IN THIS
ISSUE



MARTHA ATWOOD, *Metropolitan Opera Soprano*
A favorite artist in N. B. C. Programs

OFFICIAL LIST
of
All Broadcasting Stations
of the
United States, Canada
and **Foreign Countries**

THE LATEST REMLER RECEIVER,
"TYPE 111"

(SEE PAGE 1)

Price

25¢

KELLER'S RADIO CALL BOOK and LOG

PUBLISHED MONTHLY (EXCEPTING JULY AND AUGUST) BY

W. A. KELLER COMPANY, St. Paul, Minn.

Subscription Price: \$1.00 Per Year (Ten Issues)

VOL. 5

WINTER ISSUE (December,) 1929

No. 8

Entered as Second-Class matter May 24, 1927, at the post office at Saint Paul, Minnesota, under the Act of March 3, 1879.

Edited from Authentic Information Received Directly from Washington, D. C., and Ottawa, Canada

This issue contains a Complete List of Radio Stations of the United States and Canada Broadcasting Market and Weather Reports, Music, Lectures, Etc., arranged alphabetically by Call Letters, including their Location, Names of Owners, Power (watts), Wave Length (meters) and Frequency (kilocycles); a List of the same Stations arranged alphabetically by Names of Cities; and a List of the same Stations arranged numerically according to Wave Lengths; and other information of interest to those who "listen in"; also, a List of the Broadcasting Stations of all Foreign Countries; and a List of Short Wave Broadcasting Stations of the U. S. and Foreign Countries.

The issues of March, June, September and December, (otherwise known as the SPRING, SUMMER, FALL and WINTER issues), contain a complete List of all Broadcasting Stations of the world, revised to date of issue; the issues of January, February, April, May, October and November contain all changes in Broadcasting Stations that have occurred during each respective month preceding, besides news of interest to all Radio enthusiasts.

Every owner of a Radio Receiving Set should subscribe for Keller's Radio Call Book because it is the only publication that is revised and corrected frequently enough to constitute a reliable index of the Call Letters and other information relating to the Broadcasting Stations of the U. S. and Canada.

There are numerous changes in Call Letters, Names of Stations, Wave Length and Power every month; new stations are continually being added and frequently old stations are discontinued. Hence any list of stations, however accurate when printed, becomes very inaccurate, incomplete and unreliable within a few weeks after it is issued.

Subscriptions for Keller's Radio Call Book will be received by any Radio or News Dealer or may be sent directly to us by mail. Use the Subscription Blank printed in this book. Each subscription must be accompanied by a Money Order or Bank Draft for the full amount.

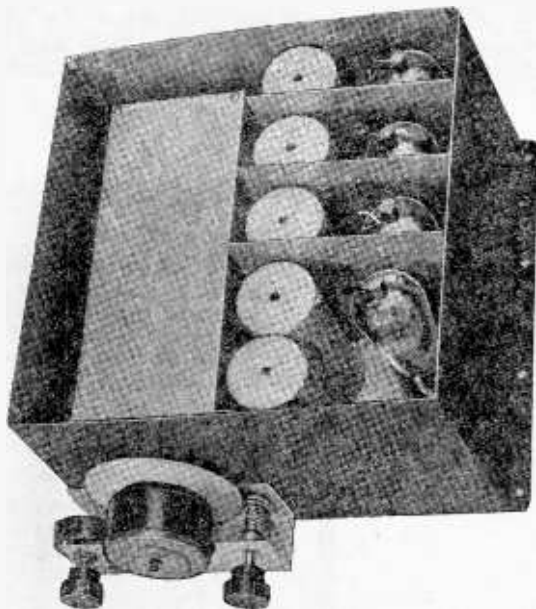
Copyright 1929—W. A. Keller.

INDEX

	Pages
The "Type 111" Remler A. C. Screen Grid Receiver.....	1-4
The Wright-DeCoster Electro-Dynamic Speaker.....	5-6
U. S. Broadcasting Stations—Alphabetically by Call Signals.....	7-17
U. S. Broadcasting Stations—Numerically by Wave-Lengths.....	19-23
U. S. Broadcasting Stations—Alphabetically by Cities.....	24-27
Canadian Broadcasting Stations—Alphabetically by Call Signals.....	18
Canadian Broadcasting Stations—Numerically by Wave-Lengths.....	23-24
Canadian Broadcasting Stations—Alphabetically by Cities.....	27
Foreign Broadcasting Stations.....	28
Short Wave Broadcasting Stations.....	31-32

The "Type 111" A. C. Receiver

The Latest Triumph of Remler Engineering Genius and
Remler Precision Workmanship



Receiver unit with Condenser unit in place.

When Radio Receiving Sets were operated with D. C. tubes (the filaments of which are lighted by dry batteries or storage batteries), "Kit" sets, were manufactured and sold by the hundreds of thousands and the majority of receiving sets were assembled and wired at home from the parts contained in these kits. Most of these home-built sets were far superior to the ready-made sets then available, because the home-built sets often contained parts of higher grade than those usually used in ready-made sets.

With the advent of the A. C. tubes, however, especially the A. C. Screen Grid tubes,

the demand for receiving sets in "Kit" form has fallen off to almost nothing.

The Remler organization, long recognized as producers of the finest and most dependable radio receiving sets, as well as the various component parts, has met this change in trade conditions by designing the "111 A. C. Screen Grid Receiving Set," which has the great advantage of being obtainable in three separate units, all completely wired, which anyone may mount in a cabinet of his own selection and can connect the three units together, without the possibility of making a mistake.

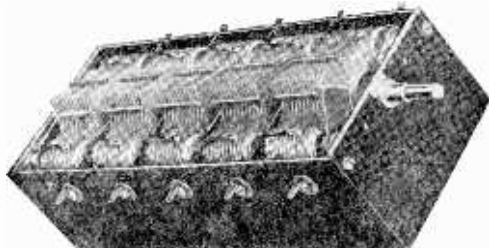
This unique plan, together with the lowest possible cost, based upon quantity production, permits anyone to possess as fine, as modern and as efficient a Receiving Set as can be obtained, at only a fraction of the cost of an ordinary ready-made set.

The Remler Type 111 Receiver has several highly distinguishing features. First of all, it is a performer "from the word go." Its selectivity is better than that of practically any of the completely assembled, factory-built sets on the market and is ample to assure the user perfect separation of local programs and a reasonable amount of DX reception. Operation of the "111" is, of course, all electric.

The "111" is highly sensitive. Full advantage has been taken of the new '24 A. C. shield-grid tubes and, to the followers of radio, little more need be said on that score.

Thirdly, the "111" is a real mechanical and electrical job, the kind for which Remler is recognized. The cases housing the receiver, power amplifier and power supply units are pressed steel, finished in brown, crystalline enamel. All circuits are thoroughly shielded. Each coil is enclosed in an individual aluminum container. All by-pass condensers, resistors and chokes used in the receiver unit are enclosed in a single metal container which is

THE "TYPE 111" A. C. RECEIVER—Continued



The Five-gang Condenser (cover removed).

the principal station call letters for any district recorded on them by a photographic process can be supplied. The face of the dial is $2\frac{1}{4}$ inches in diameter.

The Type 111 Receiver and Amplifier units are almost unbelievably compact. The receiver unit case is only 11 inches wide over the mounting flanges, $10\frac{1}{2}$ inches deep and $6\frac{1}{16}$ inches high. The over-all dimensions of the Power amplifier and power supply unit case are: length 17 inches over the mounting flanges, depth $6\frac{3}{16}$ inches, height $6\frac{1}{4}$ inches. The two units are small enough to be conveniently mounted in practically any standard radio or radio-phonograph combination cabinet. Connections are provided so that, by the installation of a jack, the amplifier unit can be used with any electric phonograph pick-up.

The receiver unit is supplied from the factory in two major parts. The first of these is the pressed steel case in which is mounted the five-gang condenser. The second unit is a metal plate carrying the tube sockets and the coils and on the under side of which is mounted the metal container housing the by-pass condensers, chokes and resistors. Leads extend from the various components for connection in accordance with a pictorial diagram and a color code. The base carrying the coils and tube sockets mounts inside of the receiver case alongside of the gang condenser. A volume control resistor, which governs the shield-grid voltage applied to the radio frequency amplifier tubes, must also be mounted in place and connected into the circuit.

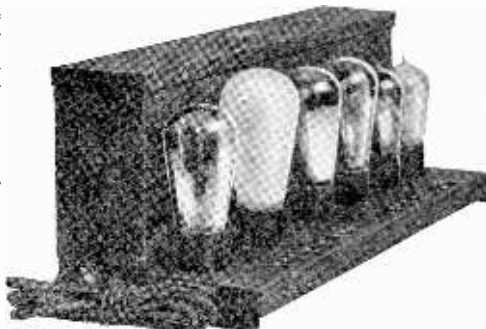
The Power amplifier and power supply unit is delivered from the factory in two parts. One of these is the container housing the power transformer, audio transformers, filter chokes and filter condensers. The other is the chassis with the sockets for the audio tubes, rectifier tube and line voltage regulator fastened in place. The container housing the transformers, chokes and filter condensers is to be fastened to the chassis and the leads extending from it are to be connected to those components mounted on the chassis and to the terminal blocks in accordance with a pictorial diagram and color code. Assembly and wiring of the two units can be accomplished without difficulty in an hour or two. There is virtually no chance for an error to occur.

There are no complicated adjustments to be made after assembly and wiring have been completed. Balancing condensers mounted at the tops of the coil forms are adjusted at the factory so that the radio frequency circuits are properly lined up. The only adjustment which must be made at the time the set is put into operation is that of the balancing condenser, located at the top of the coil nearest the tuning dial, which serves to compensate for the characteristics of the particular antenna system used.

The Type 111 Receiver and Amplifier components are priced at an extremely low figure. All parts necessary for the complete construction of the receiver and amplifier units, with the exception of tubes and speaker, are covered by the list price of \$80.00. Four '24 A. C. shield grid tubes, two '27 heater-tubes, two '45 power tubes, one '80 rectifier tube and one No. 13-20 Amperite Self-Adjusting Line Voltage Control tube, are required. At present prices, the tubes less the Amperite come to \$31.00, list, while the Amperite sells for \$3.50.

The power supply unit of the Type 111 Receiver not only supplies all necessary power for the receiver but also supplies field current for a dynamic speaker of the 90-110 volt D. C. concert type. It will not deliver adequate power to the field of the auditorium type speaker, but this speaker is usually sold with its own field supply. If a speaker with a separate power supply for its field is used, it is merely necessary to connect a 2,000 ohm, 30 watt fixed resistor in series with the leads which would otherwise be connected to the speaker field terminals.

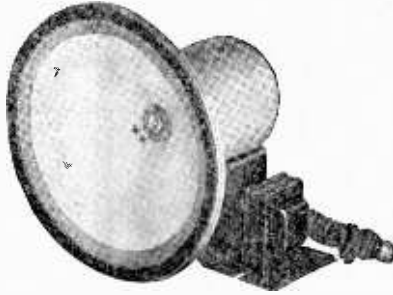
The Type 111 Receiver and Amplifier are designed for operation from a 110 volt, 50-60 cycle source. These specifications cover the usual house lighting circuit. A socket is provided in the amplifier unit for a No. 13-20 Amperite Self-Adjusting Line Voltage Control. This device maintains the voltage applied to the tubes in the receiver and amplifier constant regardless of fluctuations in the line voltage and thus assures not only more satisfactory operation from a reception standpoint but greater economy of operation due to longer tube life.



Power Amplifier and Power Supply unit.

The Wright-DeCoster Reproducer

"The
Speaker
of
the
Year"



"Your
Radio
Can Be
Only as
Good
as Its
Speaker"

The following letter, received recently by Wright-DeCoster, Inc., tells more convincingly, in a few words, than a technical article of several pages could tell, of the marvelous reproducing capabilities of the Wright-DeCoster Electro-Dynamic Speaker:

"Monday night last, our Philharmonic Symphony Orchestra broadcast over KFI. I invited a small gala audience of musicians, radio men and movie officials over to hear my new "Super" for the first time.

When I opened up and that Wright-DeCoster flooded out the glorious symphony into my studio they all sat utterly astounded. Permit me to quote but one, the great Gottschalk, composer, orchestra director and dearest friend of Victor Herbert: "Ah," he said, "This is not radio as we know it. What we hear now is just as glorious as what I hear in my conductor's stand. Turn out the lights and complete the illusion." I turned on the full output of 250 push-pull and the great composer sat there speechless. "Just a miracle, that's all," he gasped. "Every last instrument from violins, and piccolos, to the drums and basses have their own personality."

It was a sensation."

CHARLES ALBIN,

449 Lafayette Pl., Culver City, California.

Louis F. Gottschalk, whose words of praise are quoted in the above letter, is an outstanding figure in the musical world of today, being one of the most famous composers and orchestra directors. He was selected to write the original scores for the wonderful Griffith films, producing many beautiful musical compositions such as those accompanying "Broken Blossoms," "The Four Horsemen of the Apocalypse," "The Three Musketeers," "The Prisoner of Zenda," etc. The orchestral score for a musical movie, "The Rainbow Man," not yet released, has recently been completed by Mr. Gottschalk.

Could there possibly be any stronger endorsement of the Wright-DeCoster Speaker than the above words of so eminent a musician?

The Wright-DeCoster Speaker is the finest precision instrument for the reproduction of sound that human genius, aided by the latest scientific knowledge, has yet been able to produce. It is made in one size only, adaptable to be used with any radio receiver, any phonograph or any amplifier. It may be used with equal satisfaction in a small or large room, in a theatre or large auditorium. It operates directly from any 110 volt A. C. 25-50-60 cycle electric light socket.

It has no hum and the flux density of 120,000 magnetic lines to the square inch in the air gap insures extreme sensitivity and no distortion, however great the power that is delivered to it.

On official tests the Wright-DeCoster Speakers have handled amplifiers having an undistorted output of 45 watts without developing any rattles or showing any signs of breaking down. Their performance in a large theatre or auditorium is truly marvelous, both with regard to the enormous volume they can deliver and the wonderful faithfulness of reproduction.

The editor of this publication had the privilege of visiting the Wright-DeCoster factory recently and, while it is not the policy of the publishers to favor the products of any manufacturer of radio apparatus, nevertheless he would feel remiss in his sense of justice if he failed to state in this article, that his visit to the Wright-DeCoster factory was truly a revelation. A test of several Wright-DeCoster speakers for his benefit, conducted by Mr. Wright, bore out the foregoing claims concerning these wonderful reproducing instruments in every detail, and he unhesitatingly recommends them to our readers as being the finest speakers he has ever had the privilege of hearing.

These speakers may be obtained in cabinets, ready for use, or in chassis form for installing in a cabinet with a radio receiving set or in any cabinet large enough to accommodate the necessary baffle board. The Wright-DeCoster Speakers come with or without output transformer.

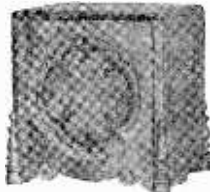
(Continued on next page)

THE WRIGHT-DECOSTER REPRODUCER—Continued



Cabinet "E"

the fall of a leaf can almost be heard.



Cabinet "D"

radio set and the marvelously fine adjustments which characterize the finer loud speakers, such as Wright-DeCoster products.

And then to anyone with good taste and love of the beautiful, comes the matter of adornment. In the loud speaker cabinets "D" and "E" our designers have achieved something really extraordinary in eye-pleasing lines and decorative craftsmanship. Reminiscent of the days of the spinnet are the table legs of these models, with their Early American, single and twin spools effect.

A cabinet proper of exquisite contour, with a delicately carved grill in acorn and oak leaf motif, against a background of figured cloth of silver bearing the same emblematic design. Truly significant, for with this speaker,

CABINETS "D" and "E"

A Charming Addition to Any Home

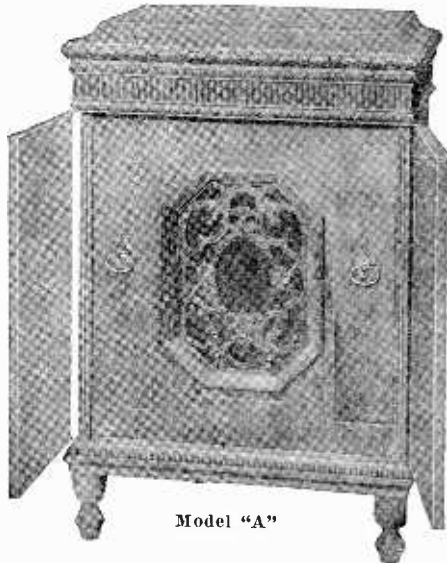
MODEL "A" Phonograph and Power Radio Speaker

Among the many outstanding features of the new Model "A," three major points engaged the concentrated attention of the designers—PERFORMANCE, ATTRACTIVENESS AND SIZE.

PERFORMANCE—Before you could fully understand the wonderful ability of this Model to truly reproduce everything from the talking voice to a symphony orchestra, you would have to HEAR it. If you have ever heard a Wright-DeCoster Reproducer, however, you have a general idea of its excellence. It embodies the capacity of the Wright-DeCoster speaker, and a phonograph of the highest grade, supplemented by an amplifier and magnetic pick-up, which are nationally recognized as the finest instruments of their kind in the world. It has a modulator control, which reduces or increases the bass tones to suit the ear of the operator.

ATTRACTIVENESS—The cabinet, of Old English type, was designed by Paul Perkins, an authority on period furniture. It is made of selected walnut, with matched doors and top of highly figured grain. The handsomely carved grill has a background of metal silver cloth, through which a number of colored electric lights cast their glow. These lights are controlled by switches, making it possible to select one of the eight shades which will harmonize with the music of the record being played, or the radio program being received. This enables a person in his or her own home to take advantage of the same elements which are constantly in evidence in the better motion picture theatres, where colored lighting effects accompany the mood of the moment. The cabinet has a compartment for records and a jack at the side for making radio connections.

SIZE—Height, 34½ inches; width, 24 inches; depth, 16¾ inches; weight (packed), 200 lbs. The tubes for operating the Pam 16 Sampson Amplifier, are 2 UX210; 1 UX281; and 1 UX227.



Model "A"

NOTE: The publishers of this magazine are not in the Radio business. This article is published for the information of its readers only, but if any further details are desired concerning this, or any other article in this issue, they will be given, cheerfully, if postage is enclosed for reply.—Editor.

TO RECORD YOUR DIAL READINGS

Find the Station in the "Alphabetical List by Call Signals"; ascertain the Wave Length or Frequency; then turn to the corresponding page in the List of Stations "Arranged by Wave Lengths" (Pages 19 to 24). The spaces between the wave length and call letters of stations may be used for recording dial readings if desired. The dial setting of any station will apply to any other station of the same wave length.

United States Broadcasting Stations

Alphabetical List by Call Signals

NOTE: The Call Letters in parentheses under the heading "Other Data" are stations with which time is divided. "C. P." indicates that a Construction Permit has been issued for a higher power than now being used. "Daylight" indicates that the station is permitted to broadcast during daylight hours only. "Lim. time" or "L. T." indicates that broadcasting is restricted to certain hours. Where higher and lower amounts of power are given, the higher power is for daytime only.

Call Signal	Location	Other Data	Watts	Kycs.	Meters	Owner
KCRC	Enid, Okla.	(KGFG)	250-100	1370	218.8	Champlin Refining Co.
KDB	Santa Barbara, Cal.		100	1500	199.9	S. Barbara Brdcast. Co.
KDFN	Casper, Wyo.	(C. P. only)	100	1210	247.8	D. L. Hathaway.
KDKA	Pittsburgh, (Saxonburg) Pa.		50000	980	350.9	Westingh'se E. & M. Co.
KDLR	Devils Lake, N. D.		100	1210	247.8	Radio Electric Co.
KDYL	Salt Lake City, Utah		1000	1290	232.4	Interm't'n Brdcastg. Corp.
KECA	Los Angeles, Cal.		1000	1430	209.7	Pac. Devel't Rad. Co.
KEJK	Los Angeles (Bev. Hills), Cal. (L. T.)		500	710	422.3	R. S. McMillan.
KELW	Burbank, Cal.	(KTM)	500	780	384.4	Earl L. White.
KEX	Portland, Ore.	(KOB)	5000	1180	251.1	Western Brdcastg. Co.
KFAB	Lincoln, Neb.	(WBBM-WJBT)	5000	770	389.4	Neb. Buick Auto Co.
KFBB	Great Falls, Mont.	(KGIR)	500	1360	220.4	Buttrey Broadcast, Inc
KFBK	Sacramento, Cal.		100	1310	228.9	Jas. McClatchy Co.
KFBL	Everett, Wash.	(KVL)	50	1370	218.8	Leese Bros.
KFDM	Beaumont, Tex.		1000-500	560	535.4	Magnolia Petrol'm Co.
KFDY	Brookings, S. D.	(KFYR)	1000-500	550	545.1	State College.
KFEL	Denver, Colo.	(KFXF)	250	630	475.9	Eug. P. O'Fallon, Inc.
KFEQ	St. Joseph, Mo.	(WOJ)	2500	680	440.9	Scroggin & Co. Bank.
KFGQ	Boone, Iowa		100	1310	228.9	Boone Biblical College.
		(KFJY-KWCR) (Sun. only)				
KFH	Wichita, Kans.	(C. P. 1000) (WOQ)	500	1300	230.6	Radio Sta. KFH Co.
KFHA	Gunnison, Colo.		50	1200	249.0	Western State College.
KFI	Los Angeles, Cal.	(C. P. 50000)	5000	640	468.5	Earl C. Anthony (Inc.).
KFIF	Portland, Ore.	(KXL)	100	1420	211.1	Benson Polytech. Inst.
KFIO	Spokane, Wash.	(Daylight)	100	1230	243.8	Spokane Brdcastg. Corp.
KFIZ	Fond du Lac, Wis.		100	1420	211.1	Reporter Printing Co.
KFJB	Marshalltown, Iowa		100	1200	249.9	Marshall Electric Co.
KJFF	Oklahoma City, Okla.		5000	1470	204.0	Natl. Radio Mfg. Co.
KFJI	Astoria, Ore.		100	1370	218.8	KFJI Brdcasters, Inc.
KFJM	Grand Forks, N. D.		100	1370	218.8	University of N. D.
KFJR	Portland, Ore.	(KTBR)	500	1300	230.6	A. C. Dixon & Son.
KFJY	Fort Dodge, Iowa	(KFGQ-KWCR)	100	1310	228.9	C. S. Tunwall.
KFJZ	Fort Worth, Tex.		100	1370	218.8	H. C. Meacham.
KFKA	Greeley, Colo.	(KPOF)	1000-500	880	340.7	State Teachers' Col.
KFKB	Millford, Kans.	(Limited time)	5000	1050	285.5	J. R. Brinkly, M.D.
KFKU	Lawrence, Kans.	(WREN)	1000	1220	245.8	State University.
KFKX	KYW—See KYW-KFKX.					
KFLV	Rockford, Ill.	(WHBL)	500	1410	212.6	A. T. Frykman.
KFLX	Galveston, Tex.		100	1370	218.8	George R. Clough.
KFMX	Northfield, Minn.		1000	1250	259.9	Carleton College.
		(WCAL-WRHM-WLB)				
KFNF	Shenandoah, Iowa (WILL-KUSD)		1000-500	890	336.9	Henry Field Seed Co.
KFOR	Lincoln, Neb.		250-100	1210	247.8	Howard A. Shuman.
KFOX	Long Beach, Cal.		1000	1250	239.9	Nichols & Warltner.
KFPL	Dublin, Tex.		100	1310	228.9	C. C. Baxter.
KFPM	Greenville, Tex.		15	1310	228.9	New Furniture Co.

Call Signal	Location	Other Data	Watts	Kycs.	Meters	Owner
KFPW	Cartersville, Mo.	(Daylight)	50	1340	223.7	Rev. L. W. Stewart.
KFPY	Spokane, Wash.	(KMO)	500	1340	223.7	Symons Bdcstg. Co.
KFQA	KMOX—See KMOX-KFQA.					
KFQD	Anchorage, Alaska		100	1230	243.8	Anchorage Radio Club.
KFQU	Holy City, Cal.	(KGGC)	100	1420	211.1	W. E. Riker.
KFQW	Seattle, Wash.		100	1420	211.1	KFQW, Inc.
KFQZ	Los Angeles (Hollywood), Cal.	(L. T.)	250	860	348.6	Taft Rad. & Brdcstg. Co.
KFRC	San Francisco, Cal.		1000	610	491.5	Don Lee, Inc.
KFRU	Columbla, Mo.	(WOS-WGBF)	500	630	475.9	Stephens College.
KFSD	San Diego, Cal.	1000-500	600	499.7		Airfan Radio Corp.
KFSG	Los Angeles, Cal.	(KMIC)	500	1120	267.7	Echo Pk. Evan. Assn.
KFUL	Galveston, Tex.	(KTSA)	500	1290	232.4	Will H. Ford.
KFUM	Colorado Springs, Colo.		1000	1270	236.1	W. D. Corley.
KFUO	St. Louis (Clayton), Mo.	(KSD)	1000-500	560	545.1	Concordia Seminary.
KFUP	Denver, Colo.	(KFJ)	100	1310	228.9	Fitzsimmons Gen'l Hosp.
KFVJ	Culver City, Cal.	(Limited time)	250	1000	299.9	Los Ang. Brdcstg. Co.
KFVS	Cape Girardeau, Mo.	(WEBQ)	100	1210	247.8	Hirsch Bat. & Rad. Co.
KFWB	Los Angeles (Hollyw'd), Cal.	(KPSN)	1000	950	315.6	Warner Bros. Brdcstg.
KFWF	St. Louis, Mo.	(WIL-WMAY)	100	1200	249.9	St. L. Truth Center, Inc.
KFWI	San Francisco, Cal.	(KFWM)	500	930	322.4	Rad. Enter'm'ts, Inc.
KFWI	Oakland (Richmond), Cal.	(KFWI)	1000-500	930	322.4	Oakl. Educat'l Soc.
KFXD	Jerome, Idaho		50	1420	211.1	Service Radio Co.
KFXF	Denver, Colo.	(KFEL)	250	630	475.9	Pike's Pk. Brdcstg. Co.
KFXJ	Denver (Edgewater), Colo.	(KFUP)	50	1310	228.9	R. G. Howell.
KFXM	Pomona (San Bernardino), Cal.		100	1200	249.9	Lee Bros. Brdcstg. Co.
		(KPPC)				
KFXR	Oklahoma City, Okla.		100	1310	228.9	Exchange Ave. Bapt. Ch.
KFXZ	Flagstaff, Ariz.		100	1420	211.1	Mary M. Costigan.
KFYO	Abilene, Tex.	250-100	100	1420	211.1	T. E. Kirksey.
KFYR	Bismarck, N. D.	(KFDY)	500	550	545.1	Hoskins-Meyer, Inc.
KGA	Spokane, Wash.		5000	1470	204.0	R. A. Horr, Receiver.
KGAR	Tucson, Ariz.		100	1370	218.8	Tucs. Motor Serv. Co.
KGB	San Diego, Cal.		250	1330	225.4	Pickw'k Brdcstg. Corp.
KGBU	Ketchikan, Alaska		500	900	333.1	Alaska Rad. & Serv. Co.
KGBX	St. Joseph, Mo.	(KWKC)	100	1370	218.8	Foster-Hall Tire Co.
KGBZ	York, Neb.	(KMA)	1000-500	930	322.4	Dr. Geo. R. Miller.
KGCA	Decorah, Iowa (Daylight)	(KWLC)	50	1270	236.1	Chas. W. Greenley.
KGCI	San Antonio, Tex.	(KGRC)	100	1370	218.8	Liberto Radio Sales.
KGCR	Watertown, S. D.		100	1210	247.8	Cutler's Rad. Brdcst. Serv.
KGCX	Vida (Wolf Point), Mont.	250-100	1310	228.9		First State Bank of Vida.
KGDA	Dell Rapids, S. D.		50	1370	218.8	Home Auto Co.
KGDE	Fergus Falls, Minn.		50	1200	249.9	Jaren Drug Co.
KGDM	Stockton, Cal.	(Daylight)	50	1100	272.6	E. F. Pepper.
KGDY	Oldham, S. D.		15	1200	249.9	Loesch & Wright.
KGEF	Los Angeles, Cal.	(KTBI)	1000	1300	230.6	Trinity Meth. Church.
KGEK	Yuma, Colo.	(KGEW)	50	1200	249.9	Beehler Elec. Equip. Co.
KGER	Long Beach, Cal.		250	1360	220.4	C. Merwin Dobyns.
KGEW	Fort Morgan, Colo.	(KGEK)	100	1200	249.9	City of Ft. Morgan.
XGEZ	Kallispell, Mont.		100	1310	228.9	Chamber of Com.
KGFF	Alva, Okla.		100	1420	211.1	KGFF Brdcstg. Co.
KGFG	Oklahoma City, Okla. (Near)	(KCRC)	100	1370	218.8	Faith Tabernacle, Inc.
KGFI	Corpus Christie, Tex.		100	1500	199.9	Eagle Brdcstg. Co.
KGFI	Los Angeles, Cal.		100	1200	249.9	Ben S. McGlashan.
KGFK	Hallock, Minn.		50	1200	249.9	Lautzenheiser & Mitchell.
KGFL	Raton, N. Mex.		50	1370	218.8	Hubbard & Murphy.
KGFW	Ravenna, Neb. (Near)	(C. P. 100)	50	1310	228.9	Sothman & Connell.
KGFX	Pierre, S. D.	(Daylight)	200	580	516.9	Dana McNeil.
KGGA	San Francisco, Cal.	(KFQU)	50	1420	211.1	Gold. Gate Brdcstg. Co.
KGGF	Picher, Okla.	(WNAD)	500	1010	296.9	D. L. Connell, M. D.
KGGM	Albuquerque, N. Mex.	500-250	1230	243.8		N. Mex. Brdcstg. Co.
KGHF	Pueblo, Colo.	(C. P. 500)	250	1320	227.1	Ritchie & Finch.
KGHI	Little Rock, Ark.		100	1200	249.9	Berean Bible Class.
KGHL	Billings, Mont.		500	950	315.6	N. W. Auto Sup. Co.
KGHX	Richmond, Tex.		50	1500	199.9	Houston Brdcstg. Co.
KGIQ	Twin Falls, Idaho	(KID)	250	1320	227.1	Radio Brdcstg. Corp.

Call Signal	Location	Other Data	Watts	Kycs.	Meters	Owner
KGIR	Butte, Mont.	(KFBB)	250	1360	220.4	Symons Brdcastg. Co.
KGIW	Trinidad, Colo.		100	1420	211.1	Trin. Creamery Co.
KGIX	Las Vegas, Nev.	(C. P. only)	100	1420	211.1	J. M. Heaton.
KGJF	Little Rock, Ark.		250	890	336.9	1st Ch., the Nazarene.
KGKB	Brownwood, Tex.		100	1500	199.9	Eagle Publishing Co.
KGKL	San Angelo, Tex.		100	1370	218.8	KGKL, Inc.
KGKO	Wichita Falls, Tex.	500-250	570	526.0		Wich. Falls Brdcastg. Co.
KGKX	Sand Point, Idaho	(C. P. 100)	15	1420	211.1	Twiss & McCann.
KGO	Oakland, Cal.	7500	790	379.5		General Electric Co.
KGRC	San Antonio, Tex.	(KGCI)	100	1370	218.8	Eugene J. Roth.
KGRS	Amarillo, Tex.	(WDAG)	1000	1410	212.6	Gish Radio Service.
KGU	Honolulu, Hawaii		1000	940	319.0	M. Mulrony & Adv. Pub.
KGW	Portland, Ore.		1000	620	483.6	Oregonian Pub. Co.
KGy	Lacey, Wash.	50-10	1200	249.9		St. Martin's College.
KHJ	Los Angeles, Cal.		1000	900	333.1	Don Lee, Inc.
KHQ	Spokane, Wash.	2000-1000	590	508.2		Louis Wasmer, Inc.
KICK	Red Oak, Iowa		100	1420	211.1	R. Oak Rad. Corp.
KID	Idaho Falls, Idaho	(KGIQ)	250	1320	227.1	J. W. Duckworth, Jr.
KIDO	Boise, Idaho		1000	1250	239.9	Boise Brdcast. Station.
KIT	Yakima, Wash.		100	1370	218.8	Carl E. Haymond.
KJBS	San Francisco, Cal.	(Daylight)	100	1070	280.2	J. Brunton & Sons Co.
KJR	Seattle, Wash.		5000	970	309.1	R. A. Horr, Receiver.
KLCN	Blytheville, Ark.	(Daylight)	50	1290	232.4	C. L. Lintzenich.
KLO	Ogden, Utah	200-100	1370	218.8		Perry Building Co.
KLPM	Minot, N. D.		100	1420	211.1	E. C. Reineke.
KLRA	Little Rock, Ark.	(KUOA)	1000	1390	215.7	Ark. Brdcastg. Co.
KLS	Oakland, Cal.	(Daylight)	250	1440	208.2	Warner Bros.
KLX	Oakland, Cal.		500	880	340.7	Tribune Pub. Co.
KLZ	Denver (Dupont), Colo.		1000	560	535.4	Reynolds Radio Co.
KMA	Shenandoah, Iowa	(KGBZ)	1000-500	930	322.4	May Seed & Nurs. Co.
KMBC	Kansas City (Independence), Mo.	2500-1000 (WHB)	950	315.6		Midland Brdcastg. Co.
KMED	Medford, Ore.		50	1310	228.9	Mrs. W. J. Virgin.
KMIC	Inglewood, Cal.	(KFSG)	500	1120	267.7	Dalton's, Inc.
KMJ	Fresno, Cal.		100	1210	247.8	James McClatchy.
KMMJ	Clay Center, Neb.	(Lim. time)	1000	740	405.2	M. M. Johnson Co.
KMO	Tacoma, Wash.	(KFPY)	500	1340	223.7	KMO, Incorporated.
KMOX-KFQA	St. Louis (Kirkwood), Mo.		50000	1090	275.1	Voice of St. L., Inc.
KMTR	Los Angeles (Hollywood), Cal.		500	570	526.0	KMTR Radio Corp.
KNX	Los Angeles (Hollyw'd), Cal.	5000 (C. P. 50000)	1050	285.5		Western Broadcast Co.
KOA	Denver, Colo.	12500	830	361.2		General Electric Co.
KOAC	Corvallis, Ore.		1000	550	545.1	State Agricult. College.
KOB	State College, N. Mex.	(KEX)	20000	1180	254.1	Col. Ag. & Mech. Arts.
KOCW	Chickasha, Okla.	500-250	1400	214.2		Okla. Col. for Women.
KOH	Reno, Nev.		100	1370	218.8	Jay Peters, Inc.
KOIL	Council Bluffs, Iowa		1000	1260	238.0	Mona Motor Oil Co.
KOIN	Portland (Sylvan), Ore.		1000	940	319.0	KOIN, Inc.
KOL	Seattle, Wash.	(KTW)	1000	1270	236.1	Seattle Brdcastg. Co.
KOMO	Seattle, Wash.		1000	920	325.9	Fisher's Blend Sta.
KOOS	Marshfield, Ore.	50	1370	218.8		H. H. Hanseth.
KORE	Eugene, Ore.		100	1420	211.1	Eugene Brdcast. Sta.
KOY	Phoenix, Ariz.		500	1390	215.7	Nielsen Rad. Sup. Co.
KPCB	Seattle, Wash.	(KPQ) (C. P. 100)	50	1210	247.8	Wescoast Brdcastg. Co.
KPJM	Prescott, Ariz.		100	1500	199.9	Miller & Klahn.
KPO	San Francisco, Cal.		5000	680	440.9	Hale Bros. & Chronicle.
KPOF	Denver, Colo.	(KFKA)	500	880	340.7	Pillar of Fire, Inc.
KPPC	Pasadena, Cal.	(KFXM)	50	1200	249.9	Pasadena Presby. Ch.
KPQ	Seattle, Wash.	(KPCB)	100	1210	247.8	Wescoast Brdcastg. Co.
KPRC	Houston (Sugarland), Tex.	2500-1000	920	325.9		Houston Printing Co.
KPSN	Pasadena, Cal.	(KFWB)	1000	1360	220.4	Star-News Pub. Co.
KPWF	Westminster, Cal.	(C. P. 50000)	10000	1490	201.2	Pac. West. Brdcastg. Fed
KQV	Pittsburgh, Pa.	(WSMK)	500	1380	217.3	Doubleday-Hill El. Co.
KQW	San Jose, Cal.		500	1010	296.9	First Bapt. Church.
KRE	Berkeley, Cal.	(KZM)	100	1370	218.8	First Cong. Church.
KREP	Phoenix, Ariz.	(C. P. 1000)	500	620	483.6	KAR Brdcastg. Co.

Call Signal	Location	Other Data	Watts	Kycs.	Meters	Owner
KRGV	—Harlingen, Tex.	(KWWG)	500	1260	238.0	Valley Rad.-Elec. Corp.
KRLD	—Dallas, Tex.	(KTHS)	10000	1040	288.3	KRLD, Inc.
KRMD	—Shreveport, La.	(KTSL)	50	1310	228.9	Robt. M. Dean.
KRSC	—Seattle, Wash.	(Daylight)	50	1120	267.7	Radio Sales Corp.
KSAC	—Manhattan, Kans.	(WIBW)	1000-500	580	516.9	State Agri. Col.
KSAT	—Fort Worth (Birdville), Tex.	(WJAD)	1000	1240	241.8	Tex. Air Transp. Brdcastg. Co.
KSCJ	—Sioux City, Iowa	(WTAQ)	1000	1330	225.4	Perkins Bros. Co.
KSD	—St. Louis, Mo.	(KFUO)	500	550	545.1	Pulitzer Publishing Co.
KSEI	—Pocatello, Idaho		250	900	333.1	KSEI Brdcastg. Assn.
KSL	—Salt Lake City, Utah		5000	1130	265.3	Rad. Serv. Corp. Utan.
KSMR	—Santa Maria, Cal.		100	1200	249.9	S. M. Val. R. R. Co.
KSO	—Clarinda, Iowa	(WKBH)	500	1380	217.3	Berry Seed Co.
KSOO	—Sioux Falls, S. D.	(Lim. time)	2000	1110	270.1	S. Falls Brdcast. Assn.
KSTP	—St. Paul (Westcott), Minn.	(C.P.50000)	10000	1460	205.4	Nat'l Bat. Brdcastg. Co.
KTAB	—Oakland, Cal.		1000	560	535.4	Associated Broadcasters.
KTAP	—San Antonio, Tex.		100	1420	211.1	Alamo Brdcastg. Co.
KTBI	—Los Angeles, Cal.	(KGEF)	750	1300	230.6	Bible Institute.
KTBR	—Portland, Ore.	(KFJR)	500	1300	230.6	M. E. Brown.
KTBS	—Shreveport, La.		1000	1450	206.8	Elliott & Steere.
KTMS	—Hot Springs, Ark.	(KRLD)	10000	1040	238.3	Chamber of Com.
KTMH	—Los Angeles (Santa Monica), Cal.	1000-500	780	384.4	384.4	Pickw'k Brdcastg. Corp.
		(KELW)				
KTNT	—Muscatine, Iowa	(Lim. time)	5000	1170	256.3	Norman Baker.
K TSA	—San Antonio, Tex.	(KFUL)	2000-1000	1290	232.4	Lone Star Brdcastg. Co.
KTSL	—Shreveport (Cedar Grove), La.		190	1310	228.9	Houseman Sht. Metal Wks.
		(KRMD)				
KTSM	—El Paso, Tex.	(WDAH)	100	1310	228.9	Bledsoe & Blackwell.
KTUE	—Houston, Tex.		100-5	1420	211.1	Uhalt Electric Co.
KTW	—Seattle, Wash.	(KOL)	1000	1270	236.1	First Presby. Church.
KUJ	—Longview, Wash.	(C. P. 100)	10	1500	199.9	Columb. Brdcastg. Co.
KUOA	—Fayetteville, Ark.	(KLRA)	1000	1390	215.7	University of Ark.
KUSD	—Vermillion, S. D.	750-500	890	336.9	336.9	University of S. D.
		(KFNF-WILL) (Night)				
KUT	—Austin, Tex.	(WTAW)	500	1120	267.7	KUT Brdcastg. Co.
KVEP	—Portland, Ore.		15	1500	199.9	Schaeffer Rad. Co.
KVI	—Tacoma (Des Moines), Wash.	(L. T.)	1000	760	394.5	Puget Snd. Brdcast. Co.
KVL	—Seattle, Wash.	(KFBL)	100	1370	218.8	A. C. Dailey.
KVOA	—Tucson, Ariz.	(Daylight)	500	1260	238.0	R. M. Riculfi.
KVOO	—Tulsa, Okla.	(WAPI)	5000	1140	263.0	S. W. Sales Corp.
KVOS	—Bellingham, Wash.		100	1200	249.9	KVOS, Inc.
KWCR	—Cedar Rapids, Ia.	(KFJY-KFGQ)	100	1310	228.9	H. F. Paar.
KWEA	—Shreveport, La.		100	1210	247.8	Wm. E. Anthony.
KWG	—Stockton, Cal.		100	1200	249.9	Portbl. Wireless Tel. Co.
KWJJ	—Portland, Ore.	(Limited time)	500	1060	232.8	Wilbur Jerman.
KWK	—St. Louis, Mo.		1000	1350	221.1	Grtr. St. L. Brd. Corp.
KWKC	—Kansas City, Mo.	(KGBX)	100	1370	218.8	W. Duncan Brdcast. Co.
KWKH	—Shreveport (Kennonw'd), La.		10000	850	352.7	W. K. Henderson.
		(WVL)				
KWLC	—Decorah, Ia.	(KGCA) (Daylight)	100	1270	236.1	Luther College.
KWSC	—Pullman, Wash.		500	1390	215.7	Wash. State College.
KWWG	—Brownsville, Tex.	(KRGV)	500	1260	238.0	Chamber of Commerce.
KXA	—Seattle, Wash.		500	570	526.0	Amer. Rad. Teleph. Co.
KXL	—Portland, Ore.	(KFIF)	100	1420	211.1	KXL Broadcasters, Inc.
KXO	—El Centro, Cal.		100	1200	249.9	Irey & Bowles.
KXRO	—Aberdeen, Wash.		75	1310	228.9	KXRO, Inc.
KYW-KFKX	—Chicago, Ill.	(KYWA)	10000-5000	1020	293.9	Westingh'se El. & Mfg. Co.
KYWA	—Chicago, Ill.	(KYW-KFKX)	500	1020	293.9	Westingh'se El. & Mfg. Co.
KZIB	—Manila, P. I.		20	1200	249.9	I. Beck, Inc.
KZM	—Hayward, Cal.	(KRE)	100	1370	218.8	Leon P. Tenney.
KZRQ	—Manila, P. I.		1000	726	413.0	Far Eastern Rad., Inc.
NAA	—Washington, D. C. (Arlington, Va.)		1000	690	434.5	U. S. Naval Station.
WAAF	—Chicago, Ill.	(Daylight)	500	920	325.9	Drovers Journal.
WAAM	—Newark, N. J.	(WGCP-WODA)	2000-1000	1250	239.9	WAAM, Inc.
WAAT	—Jersey City, N. J.	(Lim. time)	300	1070	250.2	Bremer Broadcasting Corp.
WAAW	—Omaha, Neb.	(Daylight)	500	660	454.3	Omaha Grain Exchange.

Call Signal	Location	Other Data	Watts	Kyca.	Meters	Owner
WABC-WBOQ	N. York	(Queen's Co.), N. Y. (C. P. 50000)	5000	860	348.6	Atlantic Brdestg. Corp.
WABI	Bangor, Me.		100	1200	249.9	First Universalist Church.
WABO-WHEC	See WHEC-WABO.					
WABZ	New Orleans, La. (Near)	(WJBW)	100	1200	249.9	Coliseum Pl. Bap. Church.
WADC	Akron, Ohio		1000	1320	227.1	Allen T. Simmons.
WAGM	Royal Oak, Mich.		50	1310	228.9	Robert L. Miller.
WAIU	Columbus, Ohio	(Ltd. time)	500	640	468.5	American Ins. Union.
WAPI	Birmingham, Ala.	(KVOO)	5000	1140	263.0	Ala. Polytech. Inst.
WASH	Grand Rapids, Mich.	(WOOD)	500	1270	236.1	WASH Brdestg. Corp.
WBAA	W. Lafayette, Ind.	(WCMA-WKBF)	500	1400	214.2	Purdue University.
WBAK	Harrisburg, Pa.	(WHP-WCAH)	500	1430	209.7	Penn. State Police.
WBAL	Baltimore (Glen Morris), Md.		10000	1060	282.8	Consol. Gas & Elec. Co.
		(WTIC)				
WBAP	Ft. Worth, Tex.	(WFAA) C. P.	50000	800	347.8	Carter Pub., Inc.
WBAX	Wilkes-Barre, Pa.	(WJBU)	100	1210	247.8	John H. Stenger, Jr.
WBBC	Brooklyn, N. Y.		500	1400	214.2	Brooklyn Broadcasting Corp.
		(WSGH-WSDA-WCGU-WLTH)				
WBBL	Richmond, Va.		100	1370	218.8	Grace Covenant Presb. Ch.
WBBM	WJBT—Chicago (Glenview), Ill.		25000	770	389.4	Atlas Invest. Co.
		(KFAB)				
WBBR	Rossville, N. Y.		1000	1300	230.6	People's Pulpit Assoc.
		(WHAZ-WHAP-WEVD)				
WBBZ	Ponca City, Okla.		100	1200	249.9	C. L. Carrell.
WBCM	Bay City (Hampton Twp.), Mich.		500	1410	212.6	Jas. E. Davidson.
WBCN	WENR—See WENR-WBCN.					
WBIS	WNAC—See WNAC-WBIS.					
WBMS	New York, N. Y. (Fort Lee, N. J.)		250	1450	206.8	WBMS Broadcasting Corp.
		(WNJ-WIBS-WKBO)				
WBNY	New York, N. Y.		250	1350	222.1	Baruchrome Corporation.
		(WCDA-WKBQ-WMSG)				
WBOQ	WABC—See WABC-WBOQ.					
WBOV	Terre Haute, Ind.		100	1310	225.9	Banks of Wab., Inc.
WBRC	Birmingham, Ala.		1000-500	930	322.4	Birmingham Brdcast. Corp.
WBRE	Wilkes-Barre, Pa.		100	1310	228.9	Louis G. Baltimore.
WBRL	Tilton, N. H.		500	1430	209.7	Booth Laboratories, Inc.
WBSO	Babson Park (Wellesley), Mass. (D.)		250	920	325.9	Babson Statist. Org'zation.
		(C. P. 500)				
WBT	Charlotte, N. C.	(C. P. 10000)	5000	1080	277.6	Station WBT, Inc.
WBZ	Springfield (E. Springfield), Mass.		15000	990	302.8	Westinghouse El. & Mfg. Co.
		(WBZA)				
WBZA	Boston, Mass.	(WBZ)	500	990	302.8	Westinghouse El. & Mfg. Co.
WCAC	Storrs, Conn.		250	600	499.7	Conn. Agricultural Col.
WCAD	Canton, N. Y.	(Daylight)	500	1220	245.6	St. Lawrence University.
WCAE	Pittsburgh, Pa.		500	1220	245.6	Kaufmann & Baer Co.
WCAH	Columbus, Ohio	(WBAK-WHP)	500	1430	209.7	Commer'g Rad. Serv. Co.
WCAJ	Lincoln, Neb.	(WOW)	500	590	508.2	Nebr. Wesleyan Univ'ty.
WCAL	Northfield, Minn.		1000	1250	239.9	St. Olaf College.
		(KFMX-WRHM-WLB)				
WCAM	Camden, N. J.	(WOAX-WCAP)	500	1280	234.2	City of Camden.
WCAO	Baltimore, Md.		250	600	499.7	Monumental Radio, Inc.
WCAP	Asbury Park, N. J. (WCAM-WOAX)		500	1280	234.2	Rad. Indust. Brdcast. Co.
WCAT	Rapid City, S. D.		100	1200	249.9	State School of Mines.
WCAU	Philadelphia (Byberry), Pa.		10,000	1170	256.3	Universal Brdcastg. Co.
WCAX	Burlington, Vt.	(WNBX)	100	1200	249.9	University of Vt.
WCAZ	Carthage, Ill.	(Daylight)	50	1070	280.2	Carthage College.
WCBA	Allentown, Pa.	(WSAN)	250	1440	208.2	B. B. Musselman.
WCBD	Zion, Ill.	(WMBI) (Lim. time)	5000	1080	277.6	Wilbur G. Voliva.
WCBM	Baltimore, Md.	(C. P. 250)	100	1370	218.8	Balt. Brdcastg. Corp.
WCBS	Springfield, Ill.	(WTAX)	100	1210	247.8	Dewing & Messter.
WCCO	Minneapolis (Anoka), Minn.		7500	810	370.2	N. W. Brdcastg., Inc.
		(C. P. 15,000)				
WCDA	New York, N. Y. (Cliffside, N. J.)		250	1350	222.1	Italian Educat. Brdcast. Co.
		(WBNY-WKBQ-WMSG)				
WCFL	Chicago, Ill.		1500-1000	1260	238.0	Chicago Fed. of Lab.

Call Signal	Location	Other Data	Watts	Kycs.	Meters	Owner
WCGU	Coney Island, N. Y.	(WSGH-WSDA-WLTH-WBBC)	500	1400	214.2	U. S. Broadcast Corp.
WKCY	Covington (Crescent Springs), Ky.	(WSOA-WJAZ-WORD)	5000	1480	202.6	L. B. Wilson, Inc.
WCLO	Kenosha, Wis.		100	1200	249.9	C. E. Whitmore.
WCLS	Joliet, Ill.	(WEHS-WKBB-WKBI-WHFC)	100	1310	228.9	WCLS, Inc.
WCMA	Culver, Ind.	(WBAA-WKBF)	500	1400	214.2	Culver Mil. Academy.
WCOA	Pensacola, Fla.		500	1340	223.7	City of Pensacola.
WCOE	Meridian, Miss.		1000-500	880	346.7	Crystal Oil Co.
WCOD	Harrisburg, Pa.	(WKJC)	100	1200	249.9	N. R. Hoffman.
WCOH	Yonkers (Greenville), N. Y.		100	1210	247.8	Westchester Brdct. Corp.
		(WJBI-WGBB-WINK)				
WCRW	Chicago, Ill.	(WSBC-WEDC)	100	1210	247.8	Clinton R. White.
WCSH	Portland (Cumberland), Me.		500	940	219.0	Congress Sq. Hotel Co.
WCSO	Springfield, Ohio	(WFJC)	500	1450	206.8	Wittenberg College.
WDAF	Kansas City, Mo.		1000	610	491.5	Kansas City Star.
WDAG	Amarillo, Tex.	(KGRS)	250	1410	212.6	Nat'l Rad. & Brdctg. Corp.
WDAH	El Paso, Tex.	(KTSM)	100	1310	228.9	Trintly M. E. Ch.
WDAY	Fargo (W. Fargo), N. D.		1000	940	319.0	WDAY, Inc.
WDBJ	Roanoke, Va.		500-250	930	322.4	Rich'dson-Way'nd El. Co.
WDBO	Orlando, Fla.		1000-500	1120	267.7	Rollins College.
WDEL	Wilmington, Del.	(L.T)	350-250	1120	267.7	WDEL, Inc.
WDGY	Minneapolis, Minn.	(WHDI)	1000	1180	254.1	Dr. Geo. W. Young.
WDOO	Chattanooga, Tenn.		2500-1000	1280	234.2	Chatt. Radio Co.
WDRG	New Haven, Conn.		500	1330	225.4	Doolittle Rad. Corp.
WDSU	New Orleans, La.		1000	1250	239.9	Uhalt Radio Co.
WDWF	WLSI—Providence (Cranston), R. I.		100	1210	247.8	D. Flint—Lincoln Studios.
		(WPAW)				
WDZ	Tuscola, Ill.	(Daylight)	100	1070	280.2	James L. Bush.
WEAF	New York (Bellmore), N. Y.		50000	660	454.3	Nat'l Brdctg. Co., Inc.
WEAI	Ithaca, N. Y.	(Daylight)	500	1270	236.1	Cornell University.
WEAN	Providence, R. I.		500-250	780	334.4	Shepard Co.
WEAO	Columbus, Ohio	(WKBN)	750	570	526.0	State University.
WEAR	Cleveland, Ohio	(WTAM)	1000	1070	280.2	WTAM and WEAR, Inc.
WEBC	Duluth, Minn. (Superior, Wis.)		1000	1290	232.4	H'd of Lakes Brdct. Co.
WEBE	Cambridge, Ohio		100	1210	247.8	R. W. Waller.
WEBQ	Harrisburg, Ill.	(KFVS)	100	1210	247.8	First Tr't & Sav. Bank.
WEBR	Buffalo, N. Y.		200-100	1310	228.9	H. H. Howell.
WEBW	Beloit, Wis.	(Daylight)	350	560	535.4	Beloit College.
WEDC	Chicago, Ill.	(WCRW-WSBC)	100	1210	247.8	Emil Denemark, Inc.
WEDH	Erie, Pa.		30	1420	211.1	Dispatch-Herald.
WEEI	Boston, (Weymouth), Mass.		1000	590	508.2	Edison Elect. Illum. Co.
WEHC	Emory, Va.		100	1370	218.8	Emory & Henry College.
WEHS	Chicago (Evanston), Ill.		100	1500	199.9	Victor C. Carlson.
		(WHFC-WKBI-WSOA-WJAZ-WORD)				
WELK	Philadelphia, Pa.		100	1370	218.8	H. Miller.
WEMC	Berrien Springs, Mich.	(Daylight)	1000	590	508.2	Emman'l Miss'nary Col'ge.
WENR	WBCN—Chicago, Ill.	(WLS) (L. P.)	50000	870	244.6	Gr't Lakes Brdct. Co.
WEVD	New York (Forest Hills), N. Y.		500	1300	280.6	Debs Memorial Fund.
		(WBBR-WHAP-WHAZ)				
WFV	St. Louis, Mo.	(Daylight)	1000	760	394.5	St. Louis University.
WFAA	Dallas, Tex.	(WBAP) (C. P. 50000)	10000	800	374.8	News & Journal.
WFAN	Philadelphia, Pa.	(WIP)	500	610	491.5	Keystone Brdct. Co.
WFBC	Knoxville, Tenn.		50	1200	249.9	First Baptist Church.
WFBG	Altoona, Pa.	(WJAC)	100	1310	228.9	Wm. F. Gable Co.
WFBJ	Collegeville, Minn.		100	1370	218.8	St. John's University.
WFBL	Syracuse, N. Y.	(WMAK)	750	900	333.1	Onandaga Hotel Co.
WFBM	Indianapolis, Ind.	(WSBT)	1000	1230	243.8	Indnap. Pow. & Lt. Co.
WFBT	Baltimore, Md.		250	1270	236.1	Balt. Rad. Show, Inc.
WFDF	Flint, Mich.		100	1310	228.9	Frank D. Fallain.
WFI	Philadelphia, Pa.	(WLIT)	500	560	535.4	Strawbridge & Clothier
WFIW	Hopkinsville, Ky.		1000	940	319.0	The Acme Mills, Inc.
WFJC	Akron, Ohio	(WCSO)	500	1450	206.8	Jones Brdctg., Inc.
WFKD	Philadelphia (Wissinoming), Pa.		50	1310	228.9	Foulkrod Rad. Eng. Co.
		(WNAT-WABY)				

Call Signal	Location	Other Data	Watts	Kycs.	Meters	Owner
WFLA-WSUN	S. Petersburg (Clrwtr), Fla.	2500-1000	620	483.6		Chambers of Commerce
WGAL	Lancaster, Pa.	(WRAW)	15	1310	228.9	El. Sup. & Con. Co.
WGBB	Freeport, N. Y.	(WJBI-WCOH)	100	1210	247.8	Harry H. Carman.
WGBC	Memphis, Tenn.	(WNBR)	500	1430	209.7	First Baptist Church.
WGBF	Evansville, Ind.	(WOS-KFRU)	500	630	475.9	Ev'ng. on the Air, Inc.
WGBI	Scranton, Pa.	(WQAN)	250	880	340.7	Scranton Brdcastrs., Inc.
WGBS	New York, (Astoria, L. I.) N. Y. (L.T.)		500	1180	254.1	Gen'l. Brdcastg. System.
WGCM	Gulfport, Miss.		100	1210	247.8	Grt. South'n Land Co.
WGCP	Newark, N. J.	(WODA-WAAM)	250	1250	239.9	May Brdcast. Corp.
WGES	Chicago, Ill.	(WJKS)	500	1360	220.4	Oak L'ves Brdcast. Corp
WGH	Newport News, Va.		100	1310	228.9	Virginia Brdcastg. Co.
WGHP	Detroit (Fraser), Mich.	(C. P. 1000)	750	1240	241.8	Amer. Brdcastg. Corp.
WGL	Fort Wayne, Ind.		100	1370	218.8	Fred C. Zieg.
WGMS-WLB	See WLB-WGMS.					
WGN-WLIB	Chicago (Elgin), Ill.		25000	720	416.4	Tribune Co.
WGR	Buffalo (Amherst), N. Y.		1000	550	545.1	Rad. Station WGR, Inc.
WGST	Atlanta, Ga.	(WMAZ)	250	890	335.9	Ga. Schl. Technology.
WGY	S. Schenectady, N. Y.		50000	790	379.5	General Electric Co.
WHA	Madison, Wis.	(Daylight)	750	940	319.0	University of Wis.
WHAD	Millwaukee, Wis.	(WISN)	250	1120	247.7	Marquette University.
WHAM	Rochester (Victor Twp.), N. Y.		5000	1150	260.7	Stromberg-Carlson Co.
WHAP	New York, N. Y. (Carlstadt, N. J.)		1000	1300	230.6	Defndrs. of Truth Soc.
	(WBBR-WEVD-WHAZ)					
WHAS	Louisville (Jeffersontown), Ky.		10000	820	365.6	Cour.-Jour. & Times.
WHAZ	Troy, N. Y. (WBBR-WHAP-WEVD)		500	1300	230.6	Rennselaer Polytec. Inst.
WHB	Kansas City, Mo.	(KMBC)	500	950	315.6	Sweeney Auto School.
WHBD	Bellefontaine (Mt. Orab), Ohio		100	1370	218.8	F. P. Moler.
WHBF	Rock Island, Ill.		100	1210	247.8	Beardsley Specialty Co.
WHBL	Sheloygan, Wis.	(KFLV)	500	1410	212.6	Press Pub. Co.
WHBQ	Memphis, Tenn.		100	1370	218.8	Brdcast. Sta. WHBQ, Inc.
WHBU	Anderson, Ind.		100	1210	247.8	Citizens' Bank.
WHBY	Green Bay (West DePere), Wis.		100	1200	249.9	St. Norbert's College.
	(L. T.)					
WHDF	Calumet, Mich.		100	1370	218.8	Up. Mich. Brdcastg. Co.
WHDH	Gloucester, Mass.	(Daylight)	1000	830	361.2	Matheson Rad. Co.
WHDI	Minneapolis, Minn.	(L.T.) (WDGY)	500	1180	254.1	Dunwoody Indust. Inst.
WHEC	WABO—Rochester, N. Y.	(WOKO)	500	1440	208.2	Hickson Elec. Co.
WHFC	Chicago (Cicero), Ill.		100	1500	199.9	Triangle Broadcasters.
	(WVSOA-WJAZ-WORD-WKBI-WEHS)					
WHIS	Bluefield, W. Va.		100	1420	211.1	Daily Telegraph Co.
WHK	Cleveland, (Independence), Ohio		1000	1390	215.7	Rad. Air Serv. Corp.
WHN	New York, N. Y.		250	1010	206.9	Loew Booking Co.
	(WVNY-WQAO-WPAP)					
WHO	Des Moines, Iowa	(WOC)	5000	1000	299.8	Bankers Life Co.
WHP	Harrisburg (Lemoyne), Pa.		500	1430	209.7	Penn. Brdcastg. Co.
	(WBAK-WCAH)					
WIAS	Ottumwa, Iowa		100	1420	211.1	Poling Electric Co.
WIBA	Madison, Wis.		100	1210	247.8	Capital Times Co.
WIBG	Elkins Park, Pa.	(Daylight)	50	930	322.4	St. Paul's Episcopal Ch.
WIBM	Jackson, Mich.	(WJBK)	100	1370	218.8	C. L. Carrell.
WIBO	Chicago (Desplaines), Ill.	1500-1000	500	560	535.4	Nelson Bros.
	(WNAX-WPCC)					
WIBS	Jersey City, N. J.		250	1450	206.8	N. J. Brdcastg. Corp.
	(WBMS-WNJ-WKBO)					
WIRU	Poynette, Wis.		100	1310	228.9	Wm. Forest.
WIBW	Topeka, Kans.	(KSAC)	1000-500	580	516.9	Topeka Brdcastg. Asso.
WIBX	Utica, N. Y.		300-100	1200	249.9	WIBX, Inc.
WICC	Bridgeport (Easton), Conn.	(D.)	500	1190	252.0	Bridgeport Brdcastg., Inc.
WIL	St. Louis, Mo.	(KFWF-WMAY)	250-100	1200	249.9	Mo. Brdcastg. Corp.
WILL	Urbana, Ill.	(KFNF-KUSD)	500-250	890	336.9	Univers. of Ill.
WILM	Wilmington, Del.		100	1420	211.1	Del. Brdcastg. Co.
WIOD	WMBF—Miami Beach, Fla.		1000	1120	267.7	I. of Drms Brdcastg. Co
WIP	Philadelphia, Pa.	(WFAN)	500	610	491.5	Gimbel Brothers.
WISN	Millwaukee, Wis.	(WHAD)	250	1120	267.7	Evening Wis. Co.

Call Signal	Location	Other Data	Watts	Kycs.	Meters	Owner
WJAC	Johnstown, Pa.	(WFBG)	100	1310	228.9	Johnstown Auto Co.
WJAD	Waco, Tex.	(KTAT)	1000	1240	241.8	F. P. Jackson.
WJAG	Norfolk, Neb.	(Lim. time)	1000	1060	282.8	Norfolk Daily News.
WJAK	Marion, Ind.	(WLBC)	50	1310	228.9	Marion Brdcstg. Co.
WJAS	Providence, R. I.	400-250	890	890	336.9	The Outlet Co.
WJAS	Pittsburgh (N. Fayette Twp.), Pa.	1000	1290	1290	232.4	Pitts. Rad. Sup. House.
WJAX	Jacksonville, Fla.	1000	900	900	333.1	City of Jacksonville.
WJAY	Cleveland, Ohio	(Daylight)	500	620	483.6	Clevel. Rad. Brdcst. Corp.
WJAZ	Chicago (Mt. Prospect), Ill.	5000	1480	1480	202.6	Zenith Radio Corp.
(WEHS-WKBI-WHFC-WCKY-WSOA-WORD)						
WJBC	LaSalle, Ill.	(WJBL)	100	1200	249.9	Hummer Furniture Co.
WJBI	Red Bank, N. J.	(WGBB-WCOH)	100	1210	217.8	Robt. S. Johnson.
WJBK	Ypsilanti, Mich.	(WIBM)	50	1370	218.8	Jas. F. Hopkins.
WJBL	Decatur, Ill.	(WJBC)	100	1200	249.9	Gushard D. G. Co.
WJBO	New Orleans, La.	100	1370	1370	218.8	Valdemar Jensen.
WJBT-WBBM—See WBBM-WJBT.						
WJBU	Lewisburg, Pa.	(WBAX)	100	1210	247.8	Bucknell University.
WJBW	New Orleans, La.	(WABZ)	30	1200	249.9	C. Carlson, Jr.
WJBY	Gadsden, Ala.	50	1210	1210	247.8	Chas. J. Black.
WJDX	Jackson (Hinds), Miss. (C.P. only)	1000-500	1270	1270	286.1	Lamar Life Ins. Co.
WJDZ	Winston-Salem, N. C. (C. P. only)	100	1310	1310	228.9	Winston-Salem Journal.
WJJD	Chicago (Mooseheart), Ill. (Lim. time)	20000	1130	1130	265.3	Supreme Lodge, Moose.
WJKS	Gary, Ind.	(WGES)	1250-500	1360	220.4	Johnson-Kennedy Rad. Corp.
WJR	Detroit (Sylvan Lake), Mich.	5000	750	750	399.8	WJR, Goodwill Sta., Inc.
WJSV	Wash., D. C. (Mt. Vernon Hills, Va.)	10000	1460	1460	205.4	Independ. Pub. Co.
WJW	Mansfield, Ohio	100	1210	1210	247.8	Mansfield Brdcstg. Assn.
WJZ	New York; N. Y. (Bound Br'k, N. J.)	30000	760	760	394.5	Rad. Corp. of Amer.
WKAQ	San Juan, P. R.	500	890	890	336.9	Rad. Corp. of Porto Rico.
WKAR	E. Lansing, Mich.	(Daylight)	1000	1040	288.3	Mich. State College.
WKAU	Laconia, N. H.	100	1310	1310	228.9	Laconia Radio Club.
WKBB	Joliet, Ill.	100	1310	1310	228.9	Sanders Bros.
(WEHS-WCLS-WKBI-WHFC)						
WKBC	Birmingham, Ala.	100	1310	1310	228.9	Broyles Furn. Co.
WKBF	Indianapolis, Ind.	(WBAA-WCMA)	500	1400	214.2	Indianap. Brdcstg., Inc.
WKBH	La Crosse, Wis.	(KSO)	1000	1380	217.3	Joseph Callaway.
WKBI	Chicago, Ill.	50	1500	1500	199.9	Fred L. Schoenwolf.
(WSOA-WJAZ-WORD-WHFC-WEHS)						
WKBN	Youngstown, Ohio	(WEAO)	500	570	526.0	W. P. Williamson, Jr.
WKBO	Jersey City, N. J.	250	1450	1450	206.8	Camith Corporation.
(WBMS-WNJ-WIBS)						
WKBP	Battle Creek, Mich.	50	1420	1420	211.1	Enquirer News Co.
WKBQ	New York, N. Y.	250	1350	1350	222.1	Standard Cahill Co.
(WBNY-WMSG-WCDA)						
WKBS	Galesburg, Ill.	100	1310	1310	228.9	Permil N. Nelson.
WKBV	Connersville, Ind.	150-100	1500	1500	199.9	Knox Battery & Elec. Co.
WKBW	Buffalo (Amherst), N. Y.	5000	1470	1470	204.0	Churchill Evang. Assn.
WKBZ	Ludington, Mich.	50	1500	1500	199.9	Karl L. Ashbacker.
WKEN	Buffalo (Grand Island), N. Y. (L. T.)	1000	1040	1040	288.3	WKEN, Inc.
WKJC	Lancaster, Pa.	(WCOD)	100	1200	249.9	Kirk Johnson & Co.
WKRC	Cincinnati, Ohio	500	550	550	545.1	J. S. Boyd.
WKY	Oklahoma City, Okla.	1000	900	900	333.1	WKY Radiophone Co.
WLAC	Nashville, Tenn.	5000	1490	1490	201.6	Life & Casualty Co.
WLAP	Louisville (Okalona), Ky.	30	1200	1200	249.9	Am. Brdcstg. Corp.
WLB-WGMS	Minneapolis, Minn.	500	1250	1250	239.9	University of Minn.
(WCAL-KFMX-WRHM)						
WLBC	Muncie, Ind.	(WJAK)	50	1310	228.9	D. A. Burton.
WLBF	Kansas City, Kans.	100	1420	1420	211.1	Everett L. Dillard.
WLBG	Petersburg (Ettrick), Va.	250-100	1200	1200	249.9	R. A. Gamble.
WLBL	Stevens Point, Wis. (D'tt) (C.P.3000)	2000	900	900	333.1	Wis. Dep. of Markets.
WLBW	Oil City, Pa.	500	1260	1260	238.0	Rad.-Wired Prog. Corp.
WLBX	Long Island City, N. Y.	100	1500	1500	199.9	John N. Brahy.
(WCLB-WWRL-WMBQ)						
WLBZ	Bangor, Me.	500	620	620	483.6	Me. Brdcstg. Co.

Call Signal	Location	Other Data	Watts	Kycs.	Meters	Owner
WLCI	Ithaca, N. Y.		50	1210	247.8	Luth. Assn., Ithaca.
WLFX	Boston (Lex'ton), Mass.	(WMAF)	500	1360	220.4	Lexington Air Stations.
WLEY	Boston (Lex'ton), Mass.	(WSSH)	250-100	1420	211.1	Lexington Air Stations.
WLIB-WGN	See WGN-WLIB.					
WLIT	Philadelphia, Pa.	(WFI)	500	560	535.4	Lit Brothers.
WLOE	Boston (Chelsea), Mass.	(WMES)	250-100	1500	199.9	Boston Brdcastg. Co.
WLS	Chicago (Crete), Ill.	(WENR-WBCN)	5000	870	344.6	Agricul. Brdcastg. Co. (C. P. 50000)
WLSI-WDWF	See WDWF-WLSI.					
WLTH	Brooklyn, N. Y.		500	1400	214.2	Voice of Brooklyn, Inc.
	(WCGU-WSGH-WSDA-WBBC)					
WLW	Cincinnati (Mason), Ohio		50000	700	423.3	Crosley Radio Corp.
WLWL	New York, N. Y.	(Kearney, N. J.)	5000	1100	272.6	Society St. Paul.
	(WPG) (Lim. time)					
WMAC	Cazenovia, N. Y.	(WSYR)	250	570	526.0	Clive B. Meredith.
WMAK	Buffalo (Martinsv.), N. Y.	(WFBL)	750	900	333.1	WMAK Brdcastg. Syst.
WMAL	Washington, D. C.		500-250	630	475.9	M. A. Leese Co.
WMAN	Columbus, Ohio		50	1210	247.8	Heskett Rad. Sta.
WMAQ	Chicago (Addison), Ill.		5000	670	447.5	Daily News.
WMAY	St. Louis, Mo.	(WIL-KFWF)	250-100	1200	249.9	Presby. Church.
WMAZ	Macon, Ga.	(WGST)	500-250	890	336.9	Jr. Chamb. of Com.
WMBA	Newport, R. I.		100	1500	199.9	Leroy J. Beebe.
WMBC	Detroit, Mich.		250-100	1420	211.1	Mich. Brdcastg. Co.
WMBD	Peoria Heights, Ill.	(WTAD)	1000-500	1440	208.2	Peoria Hts. Radio Lab.
WMBF-WIOD	See WIOD-WMBF.					
WMBG	Richmond, Va.		100	1210	247.8	Havens & Martin, Inc.
WMBH	Joplin, Mo. (Near)		250-100	1420	211.1	E. D. Aber.
WMBI	Chicago (Addison), Ill.		5000	1080	277.6	Moody Bible Inst.
	(WCBD) (L.T.)					
WMBO	Auburn, N. Y.		100	1370	218.8	Rad. Serv. Laboratories.
WMBQ	Brooklyn, N. Y.		100	1500	199.9	P. J. Gollhofer.
	(WCLB-WWRL-WLBX)					
WMBR	Tampa, Fla.		100	1370	218.8	F. J. Reynolds.
WMC	Memphis (Bartlett), Tenn.		1000-500	780	384.4	Commercial Appeal.
WMCA	New York, N. Y.	(Hoboken, N. J.)	500	570	526.0	Knick'b'k'r Brdcastg. Co.
	(WNYC)					
WMES	Boston, Mass.	(WLOE)	50	1500	199.9	Mass. Educational Soc.
WMMN	Fairmont, W. Va.		500-250	890	336.9	Holt Rowe Nov. Co.
WMPC	Lapeer, Mich.		100	1500	199.9	First M. E. Church.
WMRJ	Jamaica, N. Y.	(WPOE-WHPP)	10	1420	211.1	Peter J. Prinz.
WMSG	New York, N. Y.		250	1350	222.1	Mad. Sq. Gar. Brdcast. Corp.
	(WBNY-WCDA-WKBQ)					
WMT	Waterloo, Iowa	(WSUI)	500	600	499.7	Waterloo Brdcastg. Co.
WNAC-WBIS	Boston (Quincy), Mass.		1000	1230	243.8	Shepard Stores.
WNAD	Norman, Okla.	(KGGF)	500	1010	296.9	University of Oklahoma.
WNAT	Philadelphia, Pa.	(WFKD-WABY)	100	1310	228.9	Albert A. Walker.
WNAX	Yankton, S. D.		1000	570	526.0	Dak. Rad.-Gurney Seed.
	(WIBO-WPCC)					
WNBH	Binghamton, N. Y.		50	1500	199.9	Howitt-Wood Radio Co.
WNBH	New Bedford, Mass.		100	1310	228.9	New Bedford Brdcastg. Co.
WNBK	Knoxville, Tenn.		50	1310	228.9	Lonsdale Baptist Church.
WNBO	Washington, Pa.	(Sundays)	100	1200	249.9	John B. Spriggs.
WNBW	Memphis, Tenn.	(WGBC)	500	1430	209.7	John Ulrich.
WNBW	Carbondale, Pa.		10	1200	249.9	Home Cut Glass Co.
WNBX	Springfield, Vt.	(WCAX)	10	1200	249.9	First Cong. Church.
WNBZ	Saranac Lake, N. Y.	(Daylight)	50	1290	232.4	Smith & Mace.
WNJ	Newark, N. J.	(WBMS-WIBS-WKBO)	250	1450	206.8	Radio Investment Co.
WNOX	Knoxville, Tenn.		2000-1000	560	535.4	Sterchl Bros.
WNRC	Greensboro, N. C.		250	1440	208.2	W. M. Nelson.
WNYC	New York, N. Y.	(WMCA)	500	570	526.0	City of New York.
WOAI	San Antonio, Tex.	(C. P. 50,000)	5000	1190	252.0	Southern Equipment Co.
WOAN	Lawrenceburg, Tenn.	(WREC)	500	600	499.7	Jas. D. Vaughan.
WOAX	Trenton, N. J.	(WCAM-WCAP)	500	1280	234.2	F. J. Wolff.
WOBT	Union City, Tenn.		250-100	1310	228.9	Tittswth. Rad. & Mus. Shop.
WOBV	Charleston, W. Va.	(WSAZ)	250	580	516.9	Charleston Rad. Brdcastg. Co.

Call Signal	Location	Other Data	Watts	Kycs.	Meters	Owner
WOC	Davenport, Iowa	(WHO)	5000	1000	299.8	Palmer Sch. Chiropractic.
WOCL	Jamestown, N. Y.		25	1210	247.8	A. E. Newton.
WODA	Paterson, N. J.	(WGCP-WAAM)	1000	1250	239.9	R. E. O'Dea.
WODX	Mobile (Springhill), Ala.	(C. P. only) (WSFA)	500	1410	212.6	Mobile Brdcstg. Corp.
WOI	Ames, Iowa	(KFEQ) (Daylight)	5000	640	468.5	Iowa State College.
WOKO	Poughkeepsie (Mt. Beacon), N. Y.	(WHEC-WABO)	500	1440	208.2	Smith & Curtis.
WOL	Washington, D. C.		100	1310	228.9	Amer. Brdcstg. Co.
WOMT	Manitowoc, Wis.		100	1210	247.8	F. M. Kadow.
WOOD	Grand Rapids (Furnwood), Mich.	(WASH)	500	1270	236.1	Walter B. Stiles, Inc.
WOPI	Bristol, Tenn.		100	1500	199.9	Radiophone Serv. Co.
WOQ	Kansas City, Mo.	(KFH)	1000	1300	230.6	Unlty Sch. Christianity.
WOR	Newark (Kearny), N. J.		5000	710	422.3	L. Bamberger & Co.
WORC	Worcester (Auburn), Mass.	(WEPS)	100	1200	249.9	A. F. Kleindienst.
WORD	Chicago (Batavia), Ill.		5000	1480	202.6	People's Pulpit Assn.
		(WJAZ-WSOA-WEHS-WKBI-WHFC-WORD-WCKY)				
WOS	Jefferson City, Mo.	(WGBF-KFRU)	1000-500	630	475.9	State Mktg. Bureau.
WOV	N. Y., N. Y. (Secaucus, N. J.)	(D'tt)	1000	1130	265.3	Internat. Brdcstg. Corp.
WOW	Omaha, Neb.	(WCAJ)	1000	590	508.2	Woodmen of the World.
WOWO	Fort Wayne, Ind.	(WWVA)	10000	1160	258.5	Main Auto Sup. Co.
WPAP	WQAO—See WQAO-WPAP.					
WPAW	Pawtucket, R. I.	(WDWF-WLSI)	100	1210	247.8	Shartenberg & Robinson
WPCC	Chicago, Ill.	(WNAX-WIBO)	500	560	535.4	North Shore Cong. Church.
WPCH	New York, N. Y. (Hoboken, N. J.)	(Daylight)	500	810	370.2	Eastern Brdcsters, Inc.
WPEN	Philadelphia, Pa.		250-100	1500	199.9	Wm. Penn Brdcstg. Co.
WPG	Atlantic City, N. J.	(WLWL)	5000	1100	272.6	Atlantic City Govt.
WPOE	Patchogue, N. Y.	(WHPP-WMRJ)	100-30	1420	211.1	Nassau Brdcstg. Corp.
WPOR	WTAR—See WTAR-WPOR.					
WPSC	State College, Pa.	(Daytime)	500	1230	243.8	Pa. State College.
WPTF	Raleigh, N. C.	(Ltd. time)	1000	680	440.9	Durham Life Ins. Co.
WQAM	Miami, Fla.		1000	560	535.4	Miami Brdcstg. Co.
WQAN	Scranton, Pa.	(WGBI)	250	880	340.7	Scranton Times.
WQAO-WPAP	New York (Cl'side, N.J.), N.Y.	(WHN-WRNY)	250	1010	296.9	Calvary Baptist Church
WQBC	Utica, Miss.		300	1360	220.4	Chamber of Commerce
WQBZ	Weirton, W. Va.		60	1420	211.1	J. H. Thompson.
WRAF	Laporte, Ind.	(WWAE)	100	1200	249.9	Radio Club, Inc.
WRAK	Erie, Pa.		50	1370	218.8	C. R. Cummins.
WRAW	Reading, Pa.	(WGAL)	100	1310	228.9	Ave. Rad & Elect. Shop.
WRAX	Philadelphia, Pa.	(Daylight)	250	1020	293.9	Berachah Church, Inc
WRBI	Tifton, Ga.		20	1310	228.9	Kent's Mus. & Furn. Store.
WRBJ	Hattiesburg, Miss.		10	1500	199.9	Woodruff Furniture Co.
WRBL	Columbus, Ga.		50	1200	249.9	David Parmer.
WRBQ	Greenville, Miss.		100	1210	247.8	J. P. Scully.
WRBT	Wilmington, N. C.		100	1370	218.8	Wilmington Rad Assn.
WRBU	Gastonla, N. C.		100	1210	247.8	Kirby Music Co.
WRC	Washington, D. C.		500	950	315.6	Radio Corp. of Am.
WREC	Memphis (Whiteh'v'n), Tenn.	(WOAN)	1000-500	600	499.7	WREC, Inc.
WREN	Lawrence, Kan.	(KFKU)	1000	1220	245.8	Jenny Wren Co.
WRHM	Minneapolis (Fridley), Minn.	(WCAL-KFMX-WLB)	1000	1250	239.9	Rosedale Hospital, Inc.
WRJN	Racine, Wis.		100	1370	218.8	Racine Brdcstg. Corp.
WRNY	New York, N. Y. (Coytesville, N. J.)	(WQAO-WPAP-WHN)	250	1010	296.9	Aviation Rad. Sta.
WRR	Dallas, Tex.		500	1280	234.2	City of Dallas.
WRUF	Gainesville, Fla.		5000	830	361.2	University of Florida.
WRVA	Richmond (Mechanicsville), Va.		5000	1110	270.1	Larus & Bro. Co.
WSAI	Cincinnati (Mason), Ohio		500	1330	225.4	Crosley Rad. Corp.
WSAJ	Grove City, Pa.		100	1310	228.9	Grove City College.
WSAN	Allentown, Pa.	(WCBA)	250	1440	208.2	Call Pub. Co.

Call Signal	Location	Other Data	Watts	Kycs.	Meters	Owner
WSAR	Fall River, Mass.		250	1450	206.8	Doughty & Welch Elec. Co.
WSAZ	Huntington, W. Va.	(WOBW)	250	580	516.9	WSAZ, Inc.
WSB	Atlanta, Ga.	(C. P. 10,000)	5000	740	405.2	Atlanta Journal.
WSBC	Chicago, Ill.	(WEDC-WCRW)	100	1210	247.8	World Battery Co.
WSBT	South Bend, Ind.	(WFBM)	500	1230	243.8	South Bend Tribune.
WSDA	WSGH—See WSGH-WSDA.					
WSFA	Montgomery, Ala.	(C.P. only) (WODX)	500	1410	212.6	Montgomery Brdcastg. Co.
WSGH	WSDA—Brooklyn, N. Y.	(WCGU-WLTH-WBBC)	500	1400	214.2	Amateur Rad. Specialty Co.
WSIX	Springfield, Tenn.		100	1210	247.8	638 Tire & Vul. Co.
WSJS	Winston-Salem, N. C.	(C. P. only)	100	1310	228.9	W.-S. Journal Co.
WSM	Nashville, Tenn.		5000	650	461.3	Natl. Life & Acct. Ins. Co.
WSMB	New Orleans, La.		500	1320	227.1	Saenger Theat. & M. B. Co
WSMK	Dayton, Ohio	(KQV)	200	1380	217.3	S. M. Krohn, Jr.
WSOA	Chicago (Deerfield), Ill.	(WEHS-WKBI-WHFC- WJAZ-WORD-WCKY)	5000	1480	262.6	Radphne. Brdcastg. Corp.
WSPD	Toledo, Ohio		1000-500	1340	223.7	Toledo Brdcastg. Co.
WSSH	Boston, Mass.	(WLEY)	250-100	1420	211.1	Tremont Temple Bap. Ch.
WSUI	Iowa City, Iowa	(WMT)	500	600	459.7	State University.
WSUN	WFLA—See WFLA-WSUN.					
WSVS	Buffalo, N. Y.		50	1370	218.8	Seneca Vocational School.
WSYR	Syracuse, N. Y.	(WMAC)	250	570	526.0	Clive B. Meredith.
WTAD	Quincy, Ill.	(WMBD)	500	1440	208.2	Ill. Stock Med. Brdcast. Corp.
WTAG	Worcester, Mass.		250	580	516.9	Telegram Pub. Co.
WTAM	Cleveland (Brecksville), Ohio	50000-25000 (WEAR)	1070	280.2		WTAM & WEAR, Inc.
WTAQ	Eau Claire, Wis.	(KSCJ)	1000	1330	225.4	Gillette Rub. Co.
WTAR	WPOR—Norfolk, Va.		500	780	384.4	WTAR Radio Corp.
WTAW	College Station, Tex.	(KUT)	500	1120	267.7	Agri. & Mech. College.
WTAX	Streator, Ill.	(WCBS)	50	1210	247.8	Williams Hardware Co.
WTBO	Cumberland, Md.		50	1420	211.1	Assoc'n Brdcastg. Corp.
WTFI	Toccoa, Ga.		250	1450	206.8	Toccoa Falls Institute.
WTIC	Hartford (Avon), Conn.		50000	1060	282.8	Travelers Brdcastg. Corp.
WTMJ	Milwaukee (Brookfield), Wis.		2500-1000	620	483.6	Milwaukee Journal.
WTNT	Nashville, Tenn.	(WLAC)	5000	1490	261.6	Tenn. Pub. Co.
WTOC	Savannah, Ga.		500	1260	228.0	Chamber of Com.
WWAE	Chicago, Ill. (Hammond, Ind.)		100	1200	249.9	Ham'd-Calumet Brdcastg. Co.
WWJ	Detroit, Mich.	(WRAJ)	1000	920	325.9	Detroit News.
WWL	New Orleans, La.	(KWKH)	5000	850	352.7	Loyola University.
WWNC	Asheville, N. C.		1000	570	526.0	Citizens Brdcastg. Co.
WWRL	Woodside, N. Y.	(WMBQ-WLBX-WCLB)	100	1500	199.9	L. I. Brdcastg. Corp.
WWVA	Wheeling, W. Va.	(WOWO)	5000	1160	258.5	W. Va. Brdcastg. Corp.

AGENTS MAKE MONEY

Selling Subscriptions for KELLER'S RADIO CALL BOOK and LOG. Any one can do it. Why not try?

* * * *

Enclose stamps for particulars and order blanks. You can earn good money in your spare time.

Broadcasting Stations of Canada And New-foundland

Alphabetical List by Call Signals

Call Signal	Location	Watts	Kycs.	Meters	Owner
CFAC	—Calgary, Alberta	500	690	434.8	The Calgary Herald.
CFBO	—St. John, N. B.	50	890	337.1	C. A. Munro, Ltd.
CFCA	—Toronto, Ontario	500	840	357.1	Star Pub. & Printing Co.
CFCF	—Montreal, Quebec	1650	1030	291.8	Canadian Marconi Co.
CFCH	—Iroquois Falls, Ont.	250	600	500.0	Abitibi Pow. & Pap. Co., Ltd.
CFCN	—Calgary, Alberta	500	690	434.8	Western Brdcasting Co.
CFCO	—Chatham, Ont.	50	1210	247.9	Better Radio Club.
CFCR	—Regina, Sask.	500	960	312.5	Sydney Robinson.
CFCT	—Victoria, B. C.	500	630	476.2	Vict. Broadcasting Assn.
CFCY	—Charlottetown, P. E. I.	250	960	312.5	Island Radio Co.
CFJC	—Kamloops, B. C.	15	1120	267.9	Dalgleish & Sons, Ltd.
CFLC	—Prescott, Ont.	50	1010	297.0	Radio Assn. of Prescott.
CFNB	—Fredericton, N. B.	50	1210	247.9	Jas. S. Neill & Sons, Ltd.
CFQC	—Saskatoon, Sask.	500	910	329.7	The Electric Shop, Ltd.
CFRB	—Toronto (King Twp.), Ont.	4000	960	312.5	Standard Radio Mfg. Corp.
CFRC	—Kingston, Ontario	500	1120	267.9	Queen's University.
CHCA	—Calgary, Alberta	500	690	434.8	The Western Farmer.
CHCK	—Charlottetown, P. E. I.	30	960	312.5	W. E. Burke.
CHCS	—Hamilton, Ont.	10	880	340.9	The Hamilton Spectator.
CHCT	—Red Deer, Alberta	1000	840	357.1	G. F. Tull & Arden, Ltd.
CHGS	—Summerside, P. E. I.	25	1120	267.9	R. T. Holman, Ltd.
CHLS	—Vancouver, B. C.	50	730	411.0	W. G. Hassell.
CHMA	—Edmonton, Alberta	250	580	517.2	Christian & Miss'n'y. All'n'ce.
CHML	—Monnt Hamilton, Ont.	50	880	340.9	Maple Leaf Radio Co., Ltd.
CHNS	—Halifax, N. S.	500	930	322.6	Halifax Herald, Ltd.
CHRC	—Quebec, Que.	100	880	340.9	E. Fontaine.
CHWC	—Regina (Pilot Butte), Sask.	500	960	312.5	R. H. Williams & Sons, Ltd.
CHWK	—Chilliwack, B. C.	5	1210	247.9	Chilliwack Brdcast. Co., Ltd.
CHYC	—Montreal, Quebec	500	730	411.0	Northern Electric Co., Ltd.
CJBC	—Toronto, Ont.	500	580	517.2	Jarvis St. Bap. Church.
		1000	840	357.1	
		5000	960	312.5	
CJBR	—Regina, Sask.	500	960	312.5	Sask. Co-op. Wheat Prod'rs.
CJCA	—Edmonton, Alberta	500	580	517.2	Edmonton Journal, Ltd.
CJCB	—Sydney, N. S.	50	880	340.9	N. Nathanson.
CJCB	—Calgary, Alberta	500	690	434.8	Albertan Pub. Co., Ltd.
CJGC	—London, Ontario	500	910	329.7	Free Press & Ptg. Co.
CJGX	—Yorkton, Sask.	500	630	476.2	Winnipeg Grain Exchange.
CJHS	—Saskatoon, Sask.	250	910	329.7	Radio Service, Ltd.
CJOC	—Lethbridge, Alta.	50	1120	267.9	H. R. Carson.
CJOR	—Sea Island, B. C.	50	1030	291.3	G. C. Chandler.
CJRM	—Moose Jaw, Sask.	500	600	500.0	Jas. Richardson & Sons, Ltd.
CJRW	—Fleming, Sask.	500	600	500.0	Jas. Richardson & Sons, Ltd.
CJSC	—Toronto, Ontario	500	580	517.2	Evening Telegram.
CKAC	—Montreal, Quebec	5000	730	411.0	La Presse Pub. Co., Ltd.
CKCD	—Vancouver, B. C.	50	730	411.0	Vancouver Daily Province.
CKCI	—Quebec, Quebec	22½	880	340.9	La "Soleil," Ltd.
CKCK	—Regina, Sask.	500	960	312.5	Leader Pub. Co., Ltd.
CKCL	—Toronto, Ontario	500	580	517.2	Dominion Battery Co., Ltd.
CKCO	—Ottawa, Ontario	100	890	337.0	Dr. Geldert—Ott. Rad. Assn.
CKCR	—Waterloo, Ont.	50	1010	297.0	John Patterson.
CKCV	—Quebec, Quebec	50	880	340.9	G. A. Vandry.
CKFC	—Vancouver, B. C.	50	730	411.0	United Church of Canada.
CKGW	—Bowmanville, Ont.	5000	690	434.8	Gooderham & Worts.
CKIC	—Wolfville, N. S.	50	930	322.6	Acadia University.
CKLC	—Red Deer, Alberta	1000	840	357.1	Alberta Pacific Grn. Co., Ltd.
CKMC	—Cobalt, Ont.	15	1210	247.9	R. L. McAdam.
CKMO	—Vancouver, B. C.	50	730	411.0	Sprott-Shaw Radio.
CKNC	—Toronto, Ont.	500	580	517.2	Can. Nat'l Carbon Co., Ltd.
CKOC	—Hamilton, Ontario	50	880	340.9	W'tw'h Rad. & Aut. Sup. Co.
CKOW	—Toronto, Ont.	500	840	357.1	Nestle's Food Co. of Canada.
CKPC	—Preston, Ont.	50	1210	247.9	Wallace Russ.
CKPR	—Midland, Ontario	50	1120	267.9	Midland Brdcastg. Corp.
CKSH	—St. Hyacinthe, Quebec	50	1010	297.0	City of St. Hyacinthe.
CKUA	—Edmonton, Alberta	500	580	517.2	University of Alberta.
CKWX	—Vancouver, B. C.	100	730	411.0	Holstead & Hanlon.
CKX	—Brandon, Man.	500	540	555.6	Manitoba Telephone System.
CKY	—Winnipeg, Man.	5000	780	334.6	Manitoba Telephone System.
CNRA	—Moncton, N. B.	500	630	476.2	Canadian National Railways.
CNRC	—Calgary, Alberta	500	690	434.8	Canadian National Railways.
CNRE	—Edmonton, Alberta	500	580	517.2	Canadian National Railways.
CNRL	—London, Ontario	500	910	329.7	Canadian National Railways.
CNRM	—Montreal, Quebec	5000	730	411.0	Canadian National Railways.
CNRO	—Ottawa, Ontario	500	600	500.0	Canadian National Railways.
CNRQ	—Quebec, Quebec	50	880	340.9	Canadian National Railways.
CNRR	—Regina, Sask.	500	960	312.5	Canadian National Railways.
CNRS	—Saskatoon, Sask.	500	910	329.7	Canadian National Railways.
CNRT	—Toronto, Ontario	500	840	357.1	Canadian National Railways.
CNRV	—Vancouver, B. C.	500	1030	291.3	Canadian National Railways.
CNRW	—Winnipeg, Man.	5000	780	334.6	Canadian National Railways.

Newfoundland Broadcasting Station

3WMC—St. John's _____ 500 750 339.8 Wesley United Church.

United States Broadcasting Stations

Arranged by Wave Lengths.

550 Kcys.—545.1 Meters

[]
 WGR—Buffalo, N. Y. ⁹⁹
 (Amherst)
 WKRC—Cincinnati, O.
 KFYR—Bismarek, N. D.
 KFYO—
 St. Louis (Clayton), Mo.
 KSD—St. Louis, Mo.
 KFDY—Brookings, S. D.
 KOAC—Corvallis, Ore.

560 Kcys.—535.4 Meters

[]
 WEBW—Beloit, Wis.
 WLIT—Philadelphia, Pa.
 WFI—Philadelphia, Pa.
 KFDM—Beaumont, Tex.
 WNOX—Knoxville, Tenn.
 WPCC—Chicago, Ill.
 WQAM—Miami, Fla.
 KTAB—Oakland, Cal.
 KLZ—Denver, Colo.
 WIBO—Chicago, Ill.
 (Desplaines)

570 Kcys.—526.0 Meters

[]
 WEO—Columbus, O.
 WNAX—Yankton, S. D.
 WNYC—New York, N. Y.
 WMAC—Cazenovia, N. Y.
 WMCA—New York, N. Y.
 (Hoboken, N. J.)
 WSYR—Syracuse, N. Y.
 WSMK—Dayton, O.
 WKBN—Youngstown, O.
 WWNC—Asheville, N. C.
 KGKO—Wichita Falls, Tex.
 KMTR—Los Angeles, Cal.
 (Hollywood)
 KXA—Seattle, Wash.

580 Kcys.—516.9 Meters

[]
 WIBW—Topeka, Kans.
 WTAG—Worcester, Mass.
 WOBU—Charleston, W. Va.
 WSAZ—Huntington, W. Va.
 KGFX—Pierre, S. D.
 KSAC—Manhattan, Kan.

590 Kcys.—508.2 Meters

[86]
 WEEL—Boston, Mass. ✓
 (Weymouth)
 WEMC—Berrien Spgs., Mich.
 WCAJ—Lincoln, Neb.
 WOW—Omaha, Neb.
 KHQ—Spokane, Wash.
 Chicago (Addison), Ill.

600 Kcys.—499.7 Meters

[]
 WCAC—Storrs, Conn.
 WCAO—Baltimore, Md.
 WMT—Waterloo, Ia.
 WREC—Memphis, Tenn.
 (Whitehaven)
 WSUI—Iowa City, Ia.
 WOAN—
 Lawrenceburg, Tenn.
 KFSD—San Diego, Cal.

610 Kcys.—491.5 Meters

[]
 WFAN—Philadelphia, Pa.
 WIP—Philadelphia, Pa.
 WDAF—Kansas City, Mo.
 KFRC—San Francisco, Cal.

620 Kcys.—483.6 Meters

[80]
 WFLA-WSUN—
 St. Petersburg, Fla.
 (Clearwater)
 WLBZ—Bangor, Me.
 WIP—Cleveland, O.
 WTMJ—Brookfield, Wis. ✓
 KGW—Portland, Ore.
 KREP—Phoenix, Ariz.

630 Kcys.—475.9 Meters

[]
 WMAL—Washington, D. C.
 WOS—Jefferson City, Mo.
 KPFL—Denver, Colo.
 KPXF—Denver, Colo.
 KFRU—Columbia, Mo.
 WGBF—Evansville, Ind.

640 Kcys.—468.5 Meters

[]
 WATU—Columbus, O.
 WOI—Ames, Ia.
 KFI—Los Angeles, Cal.

650 Kcys.—461.3 Meters

[76]
 WSM—Nashville, Tenn.

660 Kcys.—454.3 Meters

[73]
 WEAJ—New York, N. Y.
 (Bellmore)
 WAAW—Omaha, Neb.

670 Kcys.—447.5 Meters

[72]
 WMAQ—

680 Kcys.—440.9 Meters

[]
 WPTF—Raleigh, N. C.
 KFEQ—St. Joseph, Mo.
 KPO—San Francisco, Cal.

690 Kcys.—434.5 Meters

[]
 NAA—Washington, D. C.
 (Arlington, Va.)

700 Kcys.—428.3 Meters

[64]
 WLW—Cincinnati, O.
 (Mason)

710 Kcys.—422.3 Meters

[64]
 WOR—Newark, N. J. ✓
 (Kearny)
 KEJK—Los Angeles, Cal.
 (Bev. Hills)

720 Kcys.—416.4 Meters

[62]
 WGN-WLIB—
 Chicago (Elgin), Ill.

726 Kcys.—413.0 Meters

[]
 KZRK—Manila, P. I.

740 Kcys.—405.2 Meters

[]
 WSB—Atlanta, Ga.
 KMMJ—Clay Center, Neb.

750 Kcys.—399.8 Meters

[]
 WJH—Detroit, Mich.
 (Sylvan Lake)

760 Kcys.—394.5 Meters

[56]
 WJZ—New York, N. Y.
 (Boundbrook, N. J.)
 WEW—St. Louis, Mo.
 KVI—Tacoma, Wash.
 (Des Moines)

770 Kcys.—389.4 Meters

[]
 KFAB—Lincoln, Neb.
 WBBM-WJBT—
 Chicago (Glenview), Ill.

780 Kcys.—384.4 Meters

[]
 WEAN—Providence, R. I.
 WTVR-WPOR—
 Norfolk, Va.
 WMC—Memphis, Tenn.
 (Bartlett, Tenn.)
 KELW—Burbank, Cal.
 KTM—Los Angeles, Cal.
 (Santa Monica)

790 Kcys.—379.5 Meters

51

WGY—Schenectady, N. Y.
KGO—Oakland, Cal.

800 Kcys.—374.8 Meters

WFAA—Dallas, Tex.
WBAP—Ft. Worth, Tex.

810 Kcys.—370.2 Meters

WPCH—New York, N. Y.
(Hoboken)
WCCO—Minneapolis, Minn.
(Anoka)

820 Kcys.—365.6 Meters

WHAS—Louisville, Ky.
(Jeffersonstown)

830 Kcys.—361.2 Meters

47

KOA—Denver, Colo.
WHDH—Gloucester, Mass.
WRUF—Gainesville, Fla.

850 Kcys.—352.7 Meters

KWKH—Shreveport, La.
(Kennonwood)
WWL—New Orleans, La.

860 Kcys.—348.6 Meters

41

KFGZ—Los Angeles, Cal.
(Hollywood)
WABC—WBOQ—
New York, N. Y. ✓
(Queen's Co.)

870 Kcys.—344.6 Meters

40

WLS—Chicago (Crete), Ill.
WENR—WBCN—
Chicago, Ill.

880 Kcys.—340.7 Meters

WQAN—Scranton, Pa.
WGBI—Scranton, Pa. —
WCOG—Meridian, Miss.
KLX—Oakland, Cal.
KPOF—Denver, Colo.
KPKA—Greeley, Colo.

890 Kcys.—336.9 Meters

WJAR—Providence, R. I.
WKAQ—San Juan, P. R.
WMMN—Fairmont, W. Va.
WMAZ—Macon, Ga.
WGST—Atlanta, Ga.
KGJF—Little Rock, Ark.
KUSD—Vermillion, S. D.
KFNF—Shenandoah, Ia.
WILL—Urbana, Ill.

900 Kcys.—333.1 Meters

8

WFBL—Syracuse, N. Y.
WJAX—Jacksonville, Fla.
WMAK—Buffalo, N. Y.
(Martinsville)WKY—
Oklahoma City, Okla.
WLBL—Stevens Point, Wis.
KHLJ—Los Angeles, Cal.
KSEI—Pocatello, Ida.
KGBU—Ketchikan, Alaska.

920 Kcys.—325.9 Meters

WBSO—Babson Park, Mass.
(Wellesley)
WWJ—Detroit, Mich.
KPRC—Houston, Tex.
(Sugarland)
WAAF—Chicago, Ill.
KOMO—Seattle, Wash.

930 Kcys.—322.4 Meters

WIBG—Elkins Park, Pa.
WDBJ—Roanoke, Va.
WBRC—Birmingham, Ala.
KGBZ—York, Neb.
KMA—Shenandoah, Ia.
KFWI—San Francisco, Cal.
KFWM—Oakland, Cal.
(Richmond, Cal.)

940 Kcys.—319.0 Meters

32

WCSH—Portland, Me.
(Cumberland)
WDAY—Fargo, N. D.
WFIV—Hopkinsville, Ky.
WHA—Madison, Wis.
KOIN—Portland, Ore.
(Sylvan)
KGU—Honolulu, T. H.

950 Kcys.—315.6 Meters

WRC—Washington, D. C.
KMBC—Kansas City, Mo.
(Independence)
KFWB—Los Angeles, Cal.
(Hollywood)
KGHL—Billings, Mont.
WHB—Kansas City, Mo.

970 Kcys.—309.1 Meters

KJR—Seattle, Wash.

980 Kcys.—305.9 Meters

KDKA—Pittsburgh, Pa.
(Saxonburg)

990 Kcys.—302.8 Meters

WBZ—
Springfield, Mass.
(E. Springfield)
WBZA—Boston, Mass.

1000 Kcys.—299.9 Meters

WHO—Des Moines, Ia.
WOC—Davenport, Ia.
KFVD—Culver City, Cal.

1010 Kcys.—296.9 Meters

WQAO—WPAP—
New York, N. Y.
(Cliffside, N. J.)
WHN—New York, N. Y.
WRNY—New York, N. Y.
(Coytesville, N. J.)
KGGF—Picher, Okla.
WNAD—Norman, Okla.
KQW—San Jose, Cal.

1020 Kcys.—293.9 Meters

KYW—KFKX—Chicago, Ill.
KYWA—Chicago, Ill.
WRAX—Philadelphia, Pa.

1040 Kcys.—288.3 Meters

WKEN—Buffalo, N. Y.
(Grand Island)
WKAR—E. Lansing, Mich.
KRLD—Dallas, Tex.
KTHS—Hot Springs, Ark.

1050 Kcys.—285.5 Meters

KNX—Los Angeles, Cal.
(Hollywood)
KFKB—Milford, Kans.

1060 Kcys.—282.8 Meters

WBAL—Baltimore, Md.
(Glen Morris)
WJAG—Norfolk, Neb.
WTIC—Hartford, Conn.
(Avon)
KWJJ—Portland, Ore.

1070 Kcys.—280.2 Meters

WAAT—Jersey City, N. J. ✓
WTAM—Cleveland, O. ✓
WEAR—Cleveland, O.
WCAZ—Carthage, Ill.
WDZ—Tuscola, Ill.
KJBS—San Francisco, Cal.

1080 Kcys.—277.6 Meters

WBT—Charlotte, N. C.
WCBQ—Zion, Ill.
WMBI—Chicago, Ill.
(Addison)

1090 Kcys.—275.1 Meters

KMOX-KFQA—
St. Louis (Kirkwood), Mo.

1100 Kcys.—272.6 Meters

WPG—Atlantic City, N. J.
WLWL—New York, N. Y.
(Kearny, N. J.)
KGD—Stockton, Cal.

1110 Kcys.—270.1 Meters

WRVA—Richmond, Va.
(Mechanicsville)
KSOO—Sloux Falls, S. D.

1120 Kcys.—267.7 Meters

WDBO—Orlando, Fla.
WDEL—Wilmington, Del.
WHAD—Milwaukee, Wis.
WIOD—WMBF—
Miami Beach, Fla.
WTAW—College Sta., Tex.
KUT—Austin, Tex.
WISN—Milwaukee, Wis.
KFSG—Los Angeles, Cal.
KMIC—Inglewood, Cal.
KRSC—Seattle, Wash.

1130 Kcys.—265.3 Meters

WOV—New York, N. Y.
(Secaucus, N. J.)
KSL—S. Lake City, Utah.
WJJD—Chicago, Ill.
(Mooseheart)

1140 Kcys.—263.0 Meters

WAPI—Birmingham, Ala.
KVOO—Tulsa, Okla.

1150 Kcys.—260.7 Meters

WHAM—Rochester, N. Y.

1160 Kcys.—258.5 Meters

WWVA—Wheeling, W. Va.
WOWO—Ft. Wayne, Ind. ✓

1170 Kcys.—256.3 Meters

WCAU—Philadelphia, Pa.
(Byberry)
KTNT—Muscatine, Ia.

1180 Kcys.—254.1 Meters

WGBS—New York, N. Y.
(Astoria, L. I.)
KEX—Portland, Ore.
KOB—State College, N. M.
WDGY—Minneapolis, Minn.
WHDI—Minneapolis, Minn.

1190 Kcys.—252.0 Meters

WOAI—San Antonio, Tex.
WICC—Bridgeport, Conn.

1200 Kcys.—249.9 Meters

WABI—Bangor, Me.
WCAX—Burlington, Vt.
KGFJ—Los Angeles, Cal.
KGIH—Little Rock, Ark.
WIBX—Utica, N. Y.
WORC—Worcester, Mass.
(Auburn)

WNBX—Springfield, Vt.
WLAP—Louisville, Ky.
(Okalona)

WLBG—Petersburg, Va.
(Ettrick)

WNBO—Washington, Pa.
WNBW—Carbondale, Pa.
WCOB—Harrisburg, Pa.
WKJC—Lancaster, Pa.
WABZ—New Orleans, La.
WCAX—Burlington, Vt.

WJBW—New Orleans, La.
WBBZ—Ponca City, Okla.
WFCB—Knoxville, Tenn.
WRBL—Columbus, Ga.
WJBC—LaSalle, Ill.
WJBL—Decatur, Ill.

WWAE—Hammond, Ind.
WRAF—La Porte, Ind.

KFJB—Marshalltown, Ia.
WCAT—Rapid City, S. D.
KGDY—Oldham, S. D.
WMAY—St. Louis, Mo.

KFWF—St. Louis, Mo.
KGDE—Fergus Falls, Minn.

KGFK—Hallock, Minn.
WLO—Kenosha, Wis.

WHBY—Green Bay, Wis.
(West DePere)

KFXM—Pomona, Cal.
(San Bernardino, Cal.)

KPPC—Pasadena, Cal.
KXO—El Centro, Cal.

KSMR—Santa Maria, Cal.
KWG—Stockton, Cal.
KGEK—Yuma, Colo.

KGEW—Ft. Morgan, Colo.
KFHA—Gunnison, Colo.

KVOS—Bellingham, Wash.
KCY—Lacey, Wash.
WIL—St. Louis, Mo.

1210 Kcys.—247.8 Meters

WJBI—Redbank, N. J.
WGBB—Freeport, N. Y.
WCOH—Yonkers, N. Y.
(Greenville)

WOCL—Jamestown, N. Y.
WLCI—Ithaca, N. Y.

WPAW—Pawtucket, R. I.
WDWF—WLSI—
Providence, R. I.
(Cranston)

WMAN—Columbus, O.
WJW—Mansfield, O.

WEBE—Cambridge, O.
WBAX—Wilkes Barre, Pa.

WJBU—Lewishurg, Pa.
WMBG—Richmond, Va.

WSIX—Springfield, Tenn.
WRBU—Gastonia, N. C.

WJBY—Gadsden, Ala.
WRBG—Greenville, Miss.

WGCM—Gulfport, Miss.
KDFN—Casper, Wyo.
KWEA—Shreveport, La.

KMJ—Fresno, Cal.

1210 Kcys.—247.8 Me.—Cont.

KDLR—Devils Lake, N. D.
KGCR—Watertown, S. D.

KFOR—Lincoln, Neb.
WHBU—Anderson, Ind.

KFVS—
Cape Girardeau, Mo.

WEBQ—Harrisburg, Ill.
WSBC—Chicago, Ill.

WCRW—Chicago, Ill.
WEDC—Chicago, Ill.

WCBS—Springfield, Ill.
WTAX—Streator, Ill.

WHBF—Rock Island, Ill.
WIBA—Madison, Wis.

WOMT—Manitowoc, Wis.
KPQ—Seattle, Wash.
KPCB—Seattle, Wash.

1220 Kcys.—245.8 Meters

WCAD—Canton, N. Y.
WCAE—Pittsburg, Pa.

WREN—Lawrence, Kan.
KFKU—Lawrence, Kan.

1230 Kcys.—243.8 Meters

WFBM—Indianapolis, Ind.
WNAC—WBJS—
Boston (Quincy), Mass. ✓

WPSC—State College, Pa.
WSBT—South Bend, Ind.

KFTO—Spokane, Wash.
KGGM—
Albuquerque, N. Mex.

KFQD—Anchorage, Alaska

1240 Kcys.—241.8 Meters

WGHP—Detroit, Mich.
(Fraser)

KSAT—Ft. Worth, Tex.
(Birdville)

WJAD—Waco, Tex.
WQAM—Miami, Fla.
WRBC—Valparaiso, Ind.

1250 Kcys.—239.9 Meters

WAAM—Newark, N. J.
WDSU—New Orleans, La.

WGCP—Newark, N. J.
WODA—Paterson, N. J.

WLR—WGMS—
Minneapolis, Minn.

WRHM—Minneapolis, Minn.
(Fridley)

WTOC—Savannah, Ga.
KFMX—Northfield, Minn.

KFOJ—Northfield, Minn.
KFOX—Long Beach, Cal.
KIDO—Boise, Ida.

1260 Kcys.—238.0 Meters

WCFL—Chicago, Ill.
WLRW—Oil City, Pa.

KWWG—Brownsville, Tex.
KOIL—Council Bluffs, Ia.

KRGV—Hartlingen, Tex.
KVOA—Tucson, Ariz.

1270 Kcs.—236.1 Meters

WEAI—Ithaca, N. Y.
 WASH—Gr'd Rapids, Mich.
 WFBR—Baltimore, Md.
 WOOD—Gr'd Rapids, Mich.
 (Furnwood)
 KWLC—Decorah, Ia.
 KGCA—Decorah, Ia.
 KTW—Seattle, Wash.
 KOL—Seattle, Wash.
 KFUM—
 Colorado Springs, Colo.
 WJDX—Jackson, Miss.

1280 Kcs.—234.2 Meters

WCAM—Camden, N. J.
 WCAP—Asbury Park, N. J.
 WOAX—Trenton, N. J.
 WOOD—
 Chattanooga, Tenn.
 WRR—Dallas, Tex.

1290 Kcs.—232.4 Meters

WEBC—Duluth, Minn.
 (Superior, Wis.)
 WNBZ—
 Saranac Lake, N. Y.
 WJAS—Pittsburgh, Pa.
 KTSA—San Antonio, Tex.
 KFUL—Galveston, Tex.
 KLCN—Blytheville, Ark.
 KDYL—
 Salt Lake City, Utah.

1300 Kcs.—230.6 Meters

WBBR—Rossville, N. Y.
 WHAP—New York, N. Y.
 (Carlstadt, N. J.)
 WEVD—New York, N. Y.
 (Forest Hills)
 WHAZ—Troy, N. Y. ✓
 WOQ—Kansas City, Mo.
 KFH—Wichita, Kan.
 KGEF—Los Angeles, Cal.
 KTBI—Los Angeles, Cal.
 KFJR—Portland, Ore.
 KTBR—Portland, Ore.

1310 Kcs.—228.9 Meters

WKAV—Laconia, N. H.
 WEBR—Buffalo, N. Y.
 WNBH—
 New Bedford, Mass.
 WGH—Newport News, Va.
 WAGM—Royal Oak, Mich.
 WFDF—Flint, Mich.
 WNAT—Philadelphia, Pa.
 WFKD—Philadelphia, Pa.
 (Wissinoming)
 WJAC—Johnstown, Pa.
 WFBG—Altoona, Pa.
 WRAW—Reading, Pa.
 WGAL—Lancaster, Pa.
 WSAJ—Grove City, Pa.
 WSJS—Winston-Salem, N. C.
 WRRE—Wilkes-Barre, Pa.
 WKRC—Birmingham, Ala.
 WRRI—Tifton, Ga.
 KGFV—Ravenna, Neb.
 KTSM—El Paso, Tex.

1310 Kcs.—228.9 Me.—Cont.
 WOBT—Union City, Tenn.
 WOL—Washington, D. C.
 WNBK—Knoxville, Tenn.
 KRMD—Shreveport, La.
 KTSL—Shreveport, La.
 (Cedar Grove)

KFPM—Greenville, Tex.
 WDAH—El Paso, Tex.
 KFPL—Dublin, Tex.
 KFXR—
 Oklahoma City, Okla.
 KMED—Medford, Ore.
 WKBS—Galesburg, Ill.
 WCLS—Joliet, Ill.
 WKBB—Joliet, Ill.
 KWCR—Cedar Rapids, Ia.
 KJY—Ft. Dodge, Ia.
 KFGQ—Boone, Ia.
 WBOW—Terre Haute, Ind.
 WJAK—Marion, Ind.
 WLCU—Muncie, Ind.
 WBU—Poynette, Wis.
 KPBC—Sacramento, Cal.
 KGXC—Vida, Mont.
 (Wolf Point)
 KGEZ—Kallispell, Mont.
 KFXJ—Denver, Colo.
 (Edgewater)
 KFUP—Denver, Colo.
 KXRO—Aberdeen, Wash.

1320 Kcs.—227.1 Meters

WADC—Akron, O.
 WSMB—New Orleans, La.
 KID—Idaho Falls, Ida.
 KGIQ—Twin Falls, Ida.
 KGHF—Pueblo, Colo.

1330 Kcs.—225.4 Meters

WDRG—New Haven, Conn.
 WTAQ—Eau Claire, Wis.
 KGB—San Diego, Cal.
 KSCJ—Sioux City, Ia.
 WSAI—Cincinnati, O.
 (Mason)

1340 Kcs.—223.7 Meters

WCOA—Pensacola, Fla.
 WSPD—Toledo, O.
 KFPW—Carterville, Mo.
 KFPY—Spokane, Wash.
 KMO—Tacoma, Wash.

1350 Kcs.—222.1 Meters

WBNY—New York, N. Y.
 WMSG—New York, N. Y.
 WCDA—New York, N. Y.
 (Cliffside, N. J.)
 WKBQ—New York, N. Y.
 KWK—St. Louis, Mo.

1360 Kcs.—220.4 Meters

WLEX—Boston, Mass.
 (Lexington)
 WQBC—Utica, Miss.
 WJKS—Gary, Ind.

1360 Kcs.—220.4 Me.—Cont.
 WGES—Chicago, Ill.
 KFBB—Great Falls, Mont.
 KGER—Long Beach, Cal.
 KGR—Butte, Mont.
 KPSN—Pasadena, Cal.

1370 Kcs.—218.8 Meters

WELK—Philadelphia, Pa.
 WGL—Ft. Wayne, Ind.
 WHBD—Bellefontaine, O.
 (Mt. Orab)
 WRJN—Racine, Wis.
 WHDF—Calumet, Mich.
 WMBO—Auburn, N. Y.
 WMBR—Tampa, Fla.
 WSVS—Buffalo, N. Y.
 WCBM—Baltimore, Md.
 WBBL—Richmond, Va.
 WJBK—Ypsilanti, Mich.
 WIBM—Jackson, Mich.
 WRAC—Erie, Pa.
 WJBO—New Orleans, La.
 WEHC—Emory, Va.
 WHBQ—Memphis, Tenn.
 WRBT—Wilmington, N. C.
 KGFG—
 Oklahoma City, Okla.
 KCRC—Enid, Okla.
 KGCY—San Antonio, Tex.
 KGRC—San Antonio, Tex.
 KFBL—Everett, Wash.
 KFJM—Grand Forks, N. D.
 KFJZ—Ft. Worth, Tex.
 KGKL—San Angelo, Tex.
 KFLX—Galveston, Tex.
 WFBJ—Collegeville, Minn.
 KGDA—Dell Rapids, S. D.
 KWKC—Kansas City, Mo.
 KGBX—St. Joseph, Mo.
 KGAR—Tucson, Ariz.
 KOH—Reno, Nev.
 KOOS—Marshfield, Ore.
 KRE—Berkeley, Cal.
 KFBL—Everett, Wash.
 KIT—Yakima, Wash.
 KVL—Seattle, Wash.
 KPJI—Astoria, Ore.
 KGFL—Raton, N. M.
 KLO—Ogden, Utah.

1380 Kcs.—217.3 Meters

WCOS—Springfield, O.
 KQV—Pittsburgh, Pa.
 KSO—Clarinda, Ia.
 WKBH—La Crosse, Wis.

1390 Kcs.—215.7 Meters

WHK—Cleveland, O. ✓
 KLRA—Little Rock, Ark.
 KUOA—Fayetteville, Ark.
 KOY—Phoenix, Ariz.
 KWSC—Pullman, Wash.

1400 Kcs.—213.2 Meters

WBAA—W. Lafayette, Ind.
 WCGU—Coney Island, N.Y.
 WSGH—WSDA—
 Brooklyn, N. Y.
 WLTH—Brooklyn, N. Y.
 WBBC—Brooklyn, N. Y.
 WCMA—Culver, Ind.
 WKRF—Indianapolis, Ind.
 KOCW—Chickasha, Okla.

1410 Kcys.—212.6 Meters

WBCM—Bay City, Mich.
(Hampton Twp.)
KGRS—Amarillo, Tex.
WDAG—Amarillo, Tex.
WSEA—Montgomery, Ala.
KFLV—Rockford, Ill.
WHRI—Sheboygan, Wis.
WODX—Mobile, Ala.

1420 Kcys.—211.1 Meters

KFXV—Flagstaff, Ariz.
KLPAM—Minot, N. D.
KFQU—Holy City, Cal.
KGGC—San Francisco, Cal.
KFXD—Jerome, Ida.
KFIF—Portland, Ore.
KORE—Eugene, Ore.
KFQW—Seattle, Wash.
KXRO—Aberdeen, Wash.
WILM—Wilmington, Del.
WLEY—Boston, Mass.
(Lexington)
WHIS—Bluefield, W. Va.
WMRJ—Jamaica, N. Y.
WTBO—Cumberland, Md.
WSSH—Boston, Mass. ✓
WEDH—Erie, Pa.
WMBE—Detroit, Mich.
WKBF—Battle Crk, Mich.
WPOE—Pachogue, N. Y.
WQBZ—Weirton, W. Va.
KGF—Alva, Okla.
KTAP—San Antonio, Tex.
KTUE—Houston, Tex.
KFYO—Abilene, Tex.
KGIW—Trinidad, Colo.
KICK—Red Oak, Ia.
WIAS—Ottumwa, Ia.
KGKX—Sandpoint, Ida.
WLBK—Kansas City, Kan.
WMBH—Joplin, Mo.
KFIZ—Fond du Lac, Wis.
KGIX—Las Vegas, Nev.
KXL—Portland, Ore.

1430 Kcys.—209.7 Meters

KECA—Los Angeles, Cal.
WBAK—Harrisburg, Pa.
WBRL—Tilton, N. H.
WCAH—Columbus, O.
WGBC—Memphis, Tenn.
WNBR—Memphis, Tenn.
WHP—Harrisburg, Pa.
(Lemoynce)

1440 Kcys.—208.2 Meters

WCBA—Allentown, Pa.
WHEC-WABO—
Rochester, N. Y.
WOKO—Poughkeepsie, N.Y.
(Mt. Beacon)
WSAN—Allentown, Pa.
WNRD—Greensboro, N. C.
WTAD—Quincy, Ill.
WMBD—Peoria Hts., Ill.
KIS—Oakland, Cal.

1450 Kcys.—206.8 Meters

WBMS—New York, N. Y.
(Fort Lee, N. J.)
WNJ—Newark, N. J.
WIBS—Jersey City, N. J.
WKBO—Jersey City, N. J.
WSAR—Fall River, Mass.
WFJC—Akron, O.
KTBS—Shreveport, La.
WTFI—Toccoa, Ga.

1460 Kcys.—205.4 Meters

WJSV—Washington, D. C.
(Mt. Vernon Hills, Va.)
KSTP—St. Paul, Minn.
(Westcott)

1470 Kcys.—204.0 Meters

WKBW—Buffalo, N. Y.
(Amherst)
KFJF—
Oklahoma City, Okla.

1470 Kcys.—204.0 Me.—Cont.
KGA—Spokane, Wash.

1480 Kcys.—202.6 Meters

WCKY—Covington, Ky.
(Crescent Springs, Ky.)
WJAZ—Chicago, Ill.
(Mt. Prospect)
WSOA—Chicago, Ill.
(Deerfield)
WORD—Chicago, Ill.
(Batavia)

1490 Kcys.—201.2 Meters

KPWF—Westminster, Cal.
WTNT—Nashville, Tenn.
WLAC—Nashville, Tenn.

1500 Kcys.—199.9 Meters

WEHS—Chicago, Ill.
(Evanston)
WHFC—Chicago, Ill.
(Cicero)
WKBI—Chicago, Ill.
WMBB—Newport, R. I.
WLOE—Boston, Mass.
(Chelsea)
WMES—Boston, Mass.
WNBK—Binghamton, N. Y.
WMBQ—Brooklyn, N. Y.
WLBX—
Long Island City, N. Y.
WCLB—Long Beach, N. Y.
WRBJ—Hattiesburg, Miss.
WWRL—Woodside, N. Y.
WKBZ—Ludington, Mich.
WMPG—Lapeer, Mich.
WPEN—Philadelphia, Pa.
KGKB—Brownwood, Tex.
KGF—Corpus Christie, T.
KGHX—Richmond, Tex.
WKBV—Connersville, Ind.
KPJM—Prescott, Ariz.
KVEP—Portland, Ore.
KDB—
Santa Barbara, Cal.
KUJ—Longview, Wash.
WOPI—Bristol, Tenn.

Broadcasting Stations of Canada And Newfoundland
Arranged by Wave Lengths

540 Kcys.—555.6 Meters

CKX—Brandon, Man.

580 Kcys.—517.2 Meters

CHMA—Edmonton, Alta.
CJBC—Toronto, Ont.
CJCA—Edmonton, Alta.
CJSC—Toronto, Ont.
CKCL—Toronto, Ont.
CKNC—Toronto, Ont.
CKUA—Edmonton, Alta.
CNRE—Edmonton, Alta.

600 Kcys.—500.0 Meters

CFCH—Iroquois Falls, Ont.

CJRM—Moose Jaw, Sask.
CJRW—Fleming, Sask.
CNRO—Ottawa, Ont.

630 Kcys.—476.2 Meters

CFCT—Victoria, B. C.
CJGX—Yorkton, Sask.
CNRA—Moneton, N. B.

690 Kcys.—434.8 Meters

CFAC—Calgary, Alta.
CFCN—Calgary, Alta.
CHCA—Calgary, Alta.
CJCI—Calgary, Alta.
CKGW—Bowmanville, Ont.
CNRC—Calgary, Alta.

730 Kcys.—411.0 Meters

CHLS—Vancouver, B. C.
CHYC—Montreal, Que.
CKAC—Montreal, Que. ✓
CKCD—Vancouver, B. C.
CKFC—Vancouver, B. C.
CKMO—Vancouver, B. C.
CKWX—Vancouver, B. C.
CNRM—Montreal, Que.

750 Kcys.—399.8 Meters

8WMC—St. John's, Nfld.

780 Kcys.—384.6 Meters

CKY—Winnipeg, Man.
CNRW—Winnipeg, Man.

840 Keys.—357.1 Meters

CFCA—Toronto, Ont.
 CHCT—Red Deer, Alta.
 CJBC—Toronto, Ont.
 CKLC—Red Deer, Alta.
 CKOW—Toronto, Ont.
 CNRT—Toronto, Ont.

880 Keys.—340.9 Meters

CHCS—Hamilton, Ont.
 CHML—Mt. Hamilton, Ont.
 CHRC—Quebec, Que.
 CJCB—Sydney, N. S.
 CKCI—Quebec, Que.
 CKCV—Quebec, Que.
 CKOC—Hamilton, Ont.
 CNRQ—Quebec, Que.

890 Keys.—337.0 Meters

CFBO—St. John, N. B.
 CKCO—Ottawa, Ont.

910 Keys.—329.7 Meters

CFQC—Saskatoon, Sask.
 CJGC—London, Ont.

CJHS—Saskatoon, Sask.
 CNRL—London, Ont.
 CNRS—Saskatoon, Sask.

930 Keys.—322.6 Meters

CHNS—Halifax, N. S.
 CKIC—Wolfville, N. S.

960 Keys.—312.5 Meters

36 - 34

CFCR—Regina, Sask.
 CFCY—Charlottetown, P. E. I.
 CFRB—King Twp., X ✓
 York Co., Ont.
 CHCK—Charlottetown, P. E. I.
 CHWC—Regina, Sask.
 (Pilot Butte)

CIBC—Toronto, Ont.
 CJBK—Regina, Sask.
 CKCK—Regina, Sask.
 CNRR—Regina, Sask.

1010 Keys.—297.0 Meters

CFLC—Prescott, Ont.
 CKCR—Waterloo, Ont.
 CKSH—St. Hyacinthe, Que.

1030 Keys.—291.3 Meters

CFCF—Montreal, Que.
 CHJR—Sea Island, B. C.
 CNRV—Vancouver, B. C.

1120 Keys.—267.9 Meters

CFJC—Kamloops, B. C.
 CFRK—Kingston, Ont.
 CHGS—Summerside, P. E. I.
 CJOC—Lethbridge, Alta.
 CKPR—Midland, Ont.

1210 Keys.—247.9 Meters

CFCO—Chatham, Ont.
 CFNB—Frederickton, N. B.
 CHWK—Chilliwack, B. C.
 CKMC—Cobalt, Ont.
 CKPC—Preston, Ont.

United States Broadcasting Stations Alphabetically
by Cities

Aberdeen, Wash. —KXRO
 Abilene, Tex. —KFYO
 Addison, Ill. —WMAQ
 Addison, Ill. —WMBI
 Akron, Ohio —WADC
 Akron, Ohio —WFJC
 Albuquerque, N.M. —KGGM
 Allentown, Pa. —WCBA
 Allentown, Pa. —WSAN
 Altoona, Pa. —WFBG
 Alva, Okla. —GGFF
 Amarillo, Tex. —KGRS
 Amarillo, Tex. —WDAG
 Ames, Ia. —WOI
 Amherst, N. Y. —WGR
 Amherst, N. Y. —WKBW
 Anchorage, Alaska —KFQD
 Anderson, Ind. —WBBU
 Anoka, Minn. —WCCO
 Arlington, Va. —NAA
 Asbury Pk, N. J. —WCAP
 Asheville, N. C. —WWNC
 Astoria, N. Y. —WGBS
 Astoria, Ore. —KFJI
 Atlanta, Ga. —WGST
 Atlanta, Ga. —WSB
 Atlantic City, N.J. —WPG
 Auburn, Mass. —WORC
 Auburn, N. Y. —WMBO
 Austin, Tex. —KUT
 Avon, Conn. —WTIC
 Babson Park, Mass. —WBSO
 Baltimore, Md. —WBAL
 Baltimore, Md. —WCAO
 Baltimore, Md. —WCBM
 Baltimore, Md. —WFRB
 Bangor, Me. —WABI
 Bangor, Me. —WLRZ
 Bartlett, Tenn. —WMC
 Batavia, Ill. —WORD
 Battle Creek, Mich. —WKRP
 Bay City, Mich. —WRCM
 Beaumont, Tex. —KFDM
 Bellefontaine, Ohio —WHRD
 Bellingham, Wash. —KVOS
 Bellmore, N. Y. —WEAF

Beloit, Wis. —WEBW
 Berkeley, Cal. —KRE
 Berrien Springs, Mich. —WEMC
 Beverly Hills, Cal. —KEJK
 Billings, Mont. —KGHL
 Binghamton, N.Y. —WNBF
 Birdville, Tex. —KTAT
 Birmingham, Ala. —WAPI
 Birmingham, Ala. —WBRC
 Birmingham, Ala. —WKBC
 Bismarck, N. D. —KFYR
 Bluefield, W. Va. —WHIS
 Blytheville, Ark. —KLCN
 Boise, Idaho —KIDO
 Boone, Iowa —KFGQ
 Boston, Mass. —WBIS-WNAC
 Boston, Mass. —WBZA
 Boston, Mass. —WLOE
 Boston, Mass. —WEEI
 Boston, Mass. —WLEX
 Boston, Mass. —WLEY
 Boston, Mass. —WMES
 Boston, Mass. —WSSH
 Round Brook, N.J. —WJZ
 Brecksville, O. —WTAM
 Bridgeport, Conn. —WICC
 Bristol, Tenn. —WTOJ
 Brookfield, Wis. —WTMJ
 Brookings, S. D. —KFYD
 Brooklyn, N. Y. —WBBC
 Brooklyn, N. Y. —WCLB
 Brooklyn, N. Y. —WLTH
 Brooklyn, N. Y. —WMBQ
 Brooklyn, N. Y. —WSDA-WSGH
 Brownsville, Tex. —KWVG
 Brownwood, Tex. —KGKB
 Buffalo, N. Y. —WEBR
 Buffalo, N. Y. —WGR
 Buffalo, N. Y. —WKBW
 Buffalo, N. Y. —WKEN
 Buffalo, N. Y. —WMAK
 Buffalo, N. Y. —WSVS
 Burbank, Cal. —KELW

Burlington, Vt. —WCAIX
 Butte, Mont. —KGR
 Byberry, Pa. —WCAU
 Calumet, Mich. —WHDF
 Cambridge, Ohio —WEBE
 Camden, N. J. —WCAM
 Canton, N. Y. —WCAD
 Cape Girardeau, Mo. —KFVS
 Carbondale, Pa. —WNBW
 Carlstadt, N. J. —WHAP
 Carterville, Mo. —KFPW
 Carthage, Ill. —WCAZ
 Casper, Wyo. —KFDN
 Cazenovia, N. Y. —WMAC
 Cedar Grove, Ia. —KTSL
 Cedar Rap, Ia. —KWCR
 Charleston, W. Va. —WOBU
 Charlotte, N. C. —WBT
 Chattanooga, Tenn. —WDOD
 Chelsea, Mass. —WLOE
 Chicago, Ill. —KFKX-KYW
 Chicago, Ill. —KYWA
 Chicago, Ill. —WAAF
 Chicago, Ill. —WBBM-WJBT
 Chicago, Ill. —WBCN-WENR
 Chicago, Ill. —WCFL
 Chicago, Ill. —WCRW
 Chicago, Ill. —WEDC
 Chicago, Ill. —WEHS
 Chicago, Ill. —WGES
 Chicago, Ill. —WGN-WLIB
 Chicago, Ill. —WHFC
 Chicago, Ill. —WIBO
 Chicago, Ill. —WJAZ
 Chicago, Ill. —WJJD
 Chicago, Ill. —WKBI
 Chicago, Ill. —WLS
 Chicago, Ill. —WMAQ
 Chicago, Ill. —WMBI
 Chicago, Ill. —WORD
 Chicago, Ill. —WPCC
 Chicago, Ill. —WSBC
 Chicago, Ill. —WSOA
 Chickasha, Okla. —KOCW

Cicero, Ill. _____ WHFC
 Cincinnati, Ohio _____ WKRC
 Cincinnati, Ohio _____ WLW
 Cincinnati, Ohio _____ WSAI
 Clarinda, Iowa _____ KSO
 Clay Center, Neb. _____ KMMJ
 Clayton, Mo. _____ KFUO
 Clearwater, Fla. _____
 _____ WFLA-WSUN
 Cleveland, Ohio _____ WEAR
 Cleveland, Ohio _____ WHK
 Cleveland, Ohio _____ WJAY
 Cleveland, Ohio _____ WTAM
 Cliffside, N. J. _____ WCDA
 _____ WPAP-WQAO
 Colo. Springs, Colo. _____ KFUM
 Collegeville, Minn. _____ WFBJ
 College Sta., Tex. _____ WTAW
 Columbia, Mo. _____ KFRU
 Columbus, Ga. _____ WRBL
 Columbus, Ohio _____ WAUJ
 Columbus, Ohio _____ WCAH
 Columbus, Ohio _____ WEAO
 Columbus, Ohio _____ WMAN
 Coney Island, N.Y. _____ WCGU
 Connorsville, Ind. _____ WKBV
 Corpus Christie, T. _____ KGFI
 Corvallis, Ore. _____ KOAC
 Covington, Ky. _____ WKCY
 Coytesville, N. J. _____ WRNY
 Council Bluffs, Ia. _____ KOIL
 Cranston, R. I. _____
 _____ WDWf-WLSI
 Crescent Springs, Ky. _____
 _____ WCKY
 Crete, Ill. _____ WLS
 Culver, Ind. _____ WCMA
 Culver City, Cal. _____ KFVD
 Cumberland, Me. _____ WCHS
 Dallas, Tex. _____ KRLD
 Dallas, Tex. _____ WFAA
 Dallas, Tex. _____ WRR
 Davenport, Ia. _____ WOC
 Dayton, Ohio _____ WSMK
 Decatur, Ill. _____ WJBL
 Decorah, Ia. _____ KGCA
 Decorah, Ia. _____ KWLC
 Deerfield, Ill. _____ WSOA
 Dell Rapids, S. D. _____ KGDA
 Denver, Colo. _____ KFEL
 Denver, Colo. _____ KFUP
 Denver, Colo. _____ KFXF
 Denver, Colo. _____ KFJX
 Denver, Colo. _____ KLZ
 Denver, Colo. _____ KOA
 Denver, Colo. _____ KPOF
 Des Moines, Ia. _____ WHO
 Des Moines, Wash. _____ KVI
 Des Plaines, Ill. _____ WIBO
 Detroit, Mich. _____ WJR
 Detroit, Mich. _____ WGBG
 Detroit, Mich. _____ WMBC
 Detroit, Mich. _____ WWJ
 Devils Lake, N. D. _____ KDLR
 Dublin, Tex. _____ KFPL
 Duluth, Minn. _____ WEBC
 Dupont, Colo. _____ KLZ
 Easton, Conn. _____ WICC
 Eau Claire, Wis. _____ WTAQ
 Edgewater, Col. _____ KFXI
 El Centro, Cal. _____ KXO
 Elgin, Ill. _____ WGN-WLIB
 Elkins Park, Pa. _____ WTSM
 El Paso, Tex. _____ KTSM
 El Paso, Tex. _____ WDAH
 Emory, Va. _____ WFHC
 Enid, Okla. _____ KCRC
 Erie, Pa. _____ WEDH
 Erie, Pa. _____ WRAK
 Ettrick, Va. _____ WLRG
 Eugene, Ore. _____ KORE
 Evanston, Ill. _____ WEHS
 Evansville, Ind. _____ WGBF
 Everett, Wash. _____ KFBL

Fairmont, W. Va. _____ WMMN
 Fall River, Mass. _____ WSAH
 Fargo, N. D. _____ WDAY
 Fayetteville, Ark. _____ KUOA
 Ferguson Falls, Minn. _____ KGDE
 Flagstaff, Ariz. _____ KFXV
 Flint, Mich. _____ WFDF
 Fond du Lac, Wis. _____ KFIZ
 Forest Hills, N. Y. _____ WEVD
 Fort Dodge, Iowa _____ KFJY
 Fort Lee, N. J. _____ WBMS
 Fort Morgan, Colo. _____ KGEV
 Fort Wayne, Ind. _____ WGL
 Fort Wayne, Ind. _____ WWOV
 Fort Worth, Tex. _____ KFJZ
 Fort Worth, Tex. _____ KSAT
 Fort Worth, Tex. _____ WBAP
 Fraser, Mich. _____ WGHF
 Freeport, N. Y. _____ WGBB
 Fresno, Cal. _____ KMJ
 Fridley, Minn. _____ WRHM
 Furnwood, Mich. _____ WOOD
 Gadsden, Ala. _____ WJBY
 Gainesville, Fla. _____ WRUF
 Galesburg, Ill. _____ WKBS
 Galveston, Tex. _____ KFLX
 Galveston, Tex. _____ KFUL
 Gary, Ind. _____ WJKS
 Gastonia, N. C. _____ WRBU
 Glen Morris, Md. _____ WBAL
 Glenview, Ill. _____
 _____ WBBM-WJBT
 Gloucester, Mass. _____ WHDH
 Grand Forks, N.D. _____ KFJM
 Gr'd Island, N.Y. _____ WKEN
 Gr'd Rapids, Mich. _____ WASH
 Gr'd Rapids, Mich. _____ WOOD
 Greeley, Colo. _____ KFKA
 Green Bay, Wis. _____ WHBY
 Greensboro, N. C. _____ WNRC
 Greenville, N. Y. _____ WCOH
 Greenville, Miss. _____ WRBQ
 Greenville, Tex. _____ KFPM
 Grove City, Pa. _____ WSAJ
 Gulfport, Miss. _____ WGCM
 Gunnison, Colo. _____ KFHA
 Hallock, Minn. _____ KGFK
 Hammond, Ind. _____ WWAE
 Hampton Twp., Mich. _____ WBCM
 Harlingen, Tex. _____ KRGV
 Harrisburg, Ill. _____ WBEQ
 Harrisburg, Pa. _____ WBAK
 Harrisburg, Pa. _____ WHP
 Harrisburg, Pa. _____ WCOD
 Hartford, Conn. _____ WTIC
 Hattiesburg, Miss. _____ WRBJ
 Havre, Mont. _____ KFBB
 Hinds, Miss. _____ WJDX
 Hoboken, N. J. _____ WMCA
 Hoboken, N. J. _____ WPCH
 Hollywood, Cal. _____ KFQZ
 Hollywood, Cal. _____ KFWB
 Hollywood, Cal. _____ KMTR
 Hollywood, Cal. _____ KNX
 Holy City, Cal. _____ KFQU
 Honolulu, Hawaii _____ KGU
 Hopkinsville, Ky. _____ WFIW
 Hot Springs, Ark. _____ KTHS
 Houston, Tex. _____ KPRC
 Houston, Tex. _____ KTUE
 Huntington, W. Va. _____ WSAZ
 Idaho Falls, Ida. _____ KID
 Independence, Mo. _____ KMBC
 Independence, O. _____ WHK
 Indianapolis, Ind. _____ WFBM
 Indianapolis, Ind. _____ WBRF
 Inglewood, Cal. _____ KMIC
 Iowa City, Ia. _____ WSTU
 Ithaca, N. Y. _____ WLCT
 Ithaca, N. Y. _____ WEAI
 Jackson, Mich. _____ WIBM
 Jackson, Miss. _____ WJDX
 Jacksonville, Fla. _____ WJAX
 Jamaica, N. Y. _____ WMRJ

Jamestown, N. Y. _____ WOCL
 Jefferson City, Mo. _____ WOS
 Jeffersontown, Ky. _____ WHAS
 Jerome, Idaho _____ KFXD
 Jersey City, N. J. _____ WAAAT
 Jersey City, N. J. _____ WBS
 Jersey City, N. J. _____ WKBO
 Johnstown, Pa. _____ WJAC
 Joliet, Ill. _____ WCLS
 Joliet, Ill. _____ WKBB
 Joplin, Mo. _____ WMBH
 Kalispell, Mont. _____ KGEZ
 Kansas City, Kan. _____ WLBK
 Kansas City, Mo. _____ KMBC
 Kansas City, Mo. _____ WHB
 Kansas City, Mo. _____ KWKC
 Kansas City, Mo. _____ WDAF
 Kansas City, Mo. _____ WOQ
 Kearny, N. J. _____ WLWL
 Kearny, N. J. _____ WOR
 Kenilworth, N. J. _____ WBS
 Kennonw'd, La. _____ KWKH
 Kenosha, Wis. _____ WCLO
 Ketchikan, Alaska _____ KGBU
 Kirkwood, Mo. _____
 _____ KMOX-KFQA
 Knoxville, Tenn. _____ WFBC
 Knoxville, Tenn. _____ WNBX
 Knoxville, Tenn. _____ WNOX
 Lacey, Wash. _____ KGY
 Laconia, N. H. _____ WKAV
 La Crosse, Wis. _____ WKBH
 Lancaster, Pa. _____ WGal
 Lancaster, Pa. _____ WKJC
 Lansing, Mich. _____ WKAR
 Lapeer, Mich. _____ WMPC
 Laporte, Ind. _____ WRAF
 LaSalle, Ill. _____ WJBC
 Las Vegas, Nev. _____ KGIX
 Lawrence, Kans. _____ KFPU
 Lawrence, Kans. _____ WREN
 Lawr'nc'br'g, Tenn. _____ WOAN
 Lemoyno, Pa. _____ WHP
 Lewisburg, Pa. _____ WJBU
 Lexington, Mass. _____ WLEX
 Lexington, Mass. _____ WLEY
 Lincoln, Neb. _____ KFAB
 Lincoln, Neb. _____ KFOR
 Lincoln, Neb. _____ WCAJ
 Little Rock, Ark. _____ KLRA
 Little Rock, Ark. _____ KGHI
 Little Rock, Ark. _____ KGJF
 Long Beach, Cal. _____ KFOX
 Long Beach, Cal. _____ KGER
 Long Beach, N.Y. _____ WCLR
 Long Isl. C. _____ NYLBRX
 Longview, Wash. _____ KUJ
 Los Angeles, Cal. _____ KEJK
 Los Angeles, Cal. _____ KFI
 Los Angeles, Cal. _____ KFSG
 Los Angeles, Cal. _____ KFVB
 Los Angeles, Cal. _____ KECA
 Los Angeles, Cal. _____ KFQZ
 Los Angeles, Cal. _____ KGEF
 Los Angeles, Cal. _____ KGJF
 Los Angeles, Cal. _____ KHJ
 Los Angeles, Cal. _____ KMTR
 Los Angeles, Cal. _____ KNX
 Los Angeles, Cal. _____ KTBI
 Los Angeles, Cal. _____ KTM
 Louisville, Ky. _____ WHAS
 Louisville, Ky. _____ WLAP
 Ludington, Mich. _____ WKBZ
 Macon, Ga. _____ WMAZ
 Madison, Wis. _____ WHA
 Madison, Wis. _____ WIBA
 Manhattan, Kans. _____ KSAC
 Manila, P. I. _____ KZIB
 Manila, P. I. _____ KZRQ
 Manitowoc, Wis. _____ WQMT
 Mansfield, Ohio _____ WJW
 Marion, Ind. _____ WJAK
 Marshalltown, Ia. _____ KFBI
 Marshallfield, Ore. _____ KOOS
 Martinsville, N.Y. _____ WMAK
 Mason, O. _____ WSAI

- Mason, O. _____ WLW
 Mechanicsville, Va. _____ WRVA
 Medford, Ore. _____ KMED
 Memphis, Tenn. _____ WGBC
 Memphis, Tenn. _____ WHBQ
 Memphis, Tenn. _____ WMC
 Memphis, Tenn. _____ WNBK
 Memphis, Tenn. _____ WREC
 Meridian, Miss. _____ WCOC
 Miami, Fla. _____ WQAM
 Miami Beach, Fla. _____
 WIOD-WMBF
 Milford, Kans. _____ KFKB
 Milwaukee, Wis. _____ WHAD
 Milwaukee, Wis. _____ WISN
 Milwaukee, Wis. _____ WTMJ
 Minneapolis, Minn. _____ WCCO
 Minneapolis, Minn. _____ WDCY
 Minneapolis, Minn. _____
 WGMS-WLB
 Minneapolis, Minn. _____ WHDI
 Minneapolis, Minn. _____ WRHM
 Minot, N. D. _____ KLFM
 Mobile, Ala. _____ WODX
 Montgomery, Ala. _____ WSFA
 Mooseheart, Ill. _____ WJJD
 Mt. Orab, O. _____ WHBD
 Mt. Prospect, Ill. _____ WJAZ
 Mt. Vernon H'ls, Va. _____ WJSV
 Muncie, Ind. _____ WLBC
 Muscatine, Iowa _____ KTNT
 Nashville, Tenn. _____ WLAC
 Nashville, Tenn. _____ WSM
 Nashville, Tenn. _____ WTNT
 Newark, N. J. _____ WAAM
 Newark, N. J. _____ WGCP
 Newark, N. J. _____ WNJ
 Newark, N. J. _____ WOR
 New Bedford, _____
 Mass. _____ WNBH
 New Haven, Conn. _____ WDRG
 New Orleans, La. _____ WABZ
 New Orleans, La. _____ WDSU
 New Orleans, La. _____ WJBO
 New Orleans, La. _____ WJBW
 New Orleans, La. _____ WSMB
 New Orleans, La. _____ WWL
 Newport, R. I. _____ WMBA
 Newport, N's, Va. _____ WGH
 New York, N. Y. _____ WBMS
 New York, N. Y. _____ WBNY
 New York, N. Y. _____
 WABC-WBOQ
 New York, N. Y. _____ WCDA
 New York, N. Y. _____ WFAF
 New York, N. Y. _____ WEVD
 New York, N. Y. _____ WGBS
 New York, N. Y. _____ WHAP
 New York, N. Y. _____ WHN
 New York, N. Y. _____
 WPAP-WQAO
 New York, N. Y. _____ WJZ
 New York, N. Y. _____ WKBQ
 New York, N. Y. _____ WLWL
 New York, N. Y. _____ WMCA
 New York, N. Y. _____ WMSG
 New York, N. Y. _____ WNYC
 New York, N. Y. _____ WOV
 New York, N. Y. _____ WPCH
 New York, N. Y. _____ WRNY
 Norfolk, Neb. _____ WJAG
 Norfolk, Va. _____
 WPOR-WTAR
 Norman, Okla. _____ WNAD
 Northfield, Minn. _____ KFMX
 Northfield, Minn. _____ WCAL
 Oakland, Cal. _____ KFVM
 Oakland, Cal. _____ KGO
 Oakland, Cal. _____ KLS
 Oakland, Cal. _____ KLX
 Oakland, Cal. _____ KTAB
 Ogden, Utah _____ KLO
 Oil City, Pa. _____ WLBW
 Okalona, Ky. _____ WLAP
 Oklahoma, Okla. _____ KFJF
 Oklahoma, Okla. _____ KFXR
 Oklahoma, Okla. _____ KGFG
 Oklahoma, Okla. _____ WKY
 Oldham, S. D. _____ KGDY
 Omaha, Neb. _____ WAAW
 Omaha, Neb. _____ WOW
 Orlando, Fla. _____ WDBO
 Ottumwa, Ia. _____ WIAS
 Pasadena, Cal. _____ KPPC
 Pasadena, Cal. _____ KPSN
 Patchogue, N. Y. _____ WPOE
 Paterson, N. J. _____ WODA
 Pawtucket, R. I. _____ WPAW
 Pensacola, Fla. _____ WCOA
 Peoria Heights, Ill. _____ WMBD
 Petersburg, Va. _____ WLBG
 Philadelphia, Pa. _____ WCAU
 Philadelphia, Pa. _____ WFAN
 Philadelphia, Pa. _____ WELK
 Philadelphia, Pa. _____ WFI
 Philadelphia, Pa. _____ WFKD
 Philadelphia, Pa. _____ WIP
 Philadelphia, Pa. _____ WPEN
 Philadelphia, Pa. _____ WLIT
 Philadelphia, Pa. _____ WNAT
 Philadelphia, Pa. _____ WRAX
 Phoenix, Ariz. _____ KREP
 Phoenix, Ariz. _____ KOY
 Picher, Okla. _____ KGGF
 Pierre, S. D. _____ KGFX
 Pittsburgh, Pa. _____ KDKA
 Pittsburgh, Pa. _____ KQV
 Pittsburgh, Pa. _____ WCAE
 Pittsburgh, Pa. _____ WJAS
 Pocatello, Wash. _____ KSEI
 Pomona, Cal. _____ KFWC
 Ponca City, Okla. _____ WRBZ
 Portland, Me. _____ WCSH
 Portland, Ore. _____ KEX
 Portland, Ore. _____ KFIF
 Portland, Ore. _____ KFJR
 Portland, Ore. _____ KWJJ
 Portland, Ore. _____ KGW
 Portland, Ore. _____ KOIN
 Portland, Ore. _____ KTRB
 Portland, Ore. _____ KVEP
 Portland, Ore. _____ KXL
 Poughkeepsie, _____
 N. Y. _____ WOKO
 Poynette, Wis. _____ WRBU
 Prescott, Ariz. _____ KPJM
 Providence, R. I. _____
 WDWF-WLSI
 Providence, R. I. _____ WEAN
 Providence, R. I. _____ WJAR
 Pueblo, Colo. _____ KGHF
 Pullman, Wash. _____ KWSC
 Queen's Co., N. Y. _____
 WABC-WROQ
 Quincy, Ill. _____ WTAD
 Quincy, Mass. _____
 WNAC-WRIS
 Racine, Wis. _____ WRJN
 Raleigh, N. C. _____ WPTF
 Rapid City, S. D. _____ WCAT
 Raton, N. Mex. _____ KGFL
 Ravenna, Neb. _____ KGFV
 Reading, Pa. _____ WRAW
 Red Bank, N. J. _____ WJRI
 Red Oak, Ia. _____ KICK
 Reno, Nev. _____ KOH
 Richmond, Cal. _____ KFWM
 Richmond, Tex. _____ KGHX
 Richmond, Va. _____ WBBL
 Richmond, Va. _____ WMBG
 Richmond, Va. _____ WRVA
 Roanoke, Va. _____ WDBJ
 Rochester, N. Y. _____
 WABO-WHEC
 Rochester, N. Y. _____ WHAM
 Rockford, Ill. _____ KFLV
 Rock Island, Ill. _____ WHBF
 Rossville, N. Y. _____ WBBR
 Royal Oak, Mich. _____ WAGM
 St. Joseph, Mo. _____ KFEQ
 St. Joseph, Mo. _____ KGBX
 St. Louis, Mo. _____ KFUO
 St. Louis, Mo. _____ KWK
 St. Louis, Mo. _____ KFWF
 St. Louis, Mo. _____
 KMOX-KFQA
 St. Louis, Mo. _____ KSD
 St. Louis, Mo. _____ WEW
 St. Louis, Mo. _____ WIL
 St. Louis, Mo. _____ WMAV
 St. Paul, Minn. _____ KSTP
 St. Petersburg, Fla. _____
 WFLA-WSUN
 Sacramento, Cal. _____ KFBK
 Salt L. City, Utah _____ KDYL
 Salt L. City, Utah _____ KSL
 San Angelo, Tex. _____ KGKL
 San Antonio, Tex. _____ KTSA
 San Antonio, Tex. _____ KGCI
 San Antonio, Tex. _____ KGRC
 San Antonio, Tex. _____ KTAP
 San Antonio, Tex. _____ WQAI
 San Bernardino, Cal. _____
 KFXM
 San Diego, Cal. _____ KGB
 San Diego, Cal. _____ KFSD
 Sandpoint, Idaho _____ KGKX
 San Francisco, Cal. _____ KFRC
 San Francisco, Cal. _____ KFBI
 San Francisco, Cal. _____ KGGC
 San Francisco, Cal. _____ KJBS
 San Francisco, Cal. _____ KPO
 San Jose, Cal. _____ KQW
 San Juan, P. R. _____ WKAQ
 Santa Barbara, Cal. _____ KDB
 Santa Maria, Cal. _____ KSMR
 Santa Monica, Cal. _____ KTM
 Saranac Lake, _____
 N. Y. _____ WNBZ
 Savannah, Ga. _____ WTOC
 Saxonburg, Pa. _____ KDKA
 Schenectady, N. Y. _____ WGY
 Scranton, Pa. _____ WGBI
 Scranton, Pa. _____ WQAN
 Seattle, Wash. _____ KFQW
 Seattle, Wash. _____ KPQ
 Seattle, Wash. _____ KJR
 Seattle, Wash. _____ KOL
 Seattle, Wash. _____ KOM
 Seattle, Wash. _____ KPCB
 Seattle, Wash. _____ KRCC
 Seattle, Wash. _____ KTW
 Seattle, Wash. _____ KVL
 Seattle, Wash. _____ KKA
 Secaucus, N. J. _____ WOV
 Sheboygan, Wis. _____ WHBL
 Shenandoah, Ia. _____ KFNF
 Shenandoah, Ia. _____ KMA
 Shreveport, La. _____ KRMD
 Shreveport, La. _____ KTBS
 Shreveport, La. _____ KTSL
 Shreveport, La. _____ KWEA
 Shreveport, La. _____ KWKH
 Sioux City, Iowa _____ KSCJ
 Sioux Falls, S. D. _____ KSCB
 South Bend, Ind. _____ WSBT
 Spokane, Wash. _____ KFIO
 Spokane, Wash. _____ KFPY
 Spokane, Wash. _____ KGA
 Spokane, Wash. _____ KHQ
 Springfield, Ill. _____ WCBS
 Springfield, Mass. _____ WRZ
 Springfield, Ohio _____ WCSO

Springfield, Tenn. _____WSIX	Tucson, Ariz. _____KGAR	Westminster, Cal. _____KPWF
Springfield, Vt. _____WNBX	Tucson, Ariz. _____KVOA	Weymouth, Mass. _____WEEI
Springhill, Ala. _____WODX	Tulsa, Okla. _____KVOO	Wheeling, W. Va. _____WVVA
State College, Pa. _____WPSC	Tuscola, Ill. _____W LZ	Whitehaven, Tenn. _____WREC
State Col., N. Mex. _____KOB	Twin Falls, Ida. _____KGIQ	Wichita, Kans. _____KFH
Stevens P'nt, Wis. _____WLBL	Union City, Tenn. _____WOBT	Wichita Falls, Tex. _____KGKO
Stockton, Cal. _____KGDM	Urbana, Ill. _____WILL	Wilkes-Barre, Pa. _____WBAX
Stockton, Cal. _____KWG	Utica, Miss. _____WQBC	Wilkes-Barre, Pa. _____WBRE
Storrs, Conn. _____WCAC	Utica, N. Y. _____WIBX	Wilmington, Del. _____WDEL
Streator, Ill. _____WTAX	Vermilion, S. D. _____KUSD	Wilmington, Del. _____WILM
Sugarland, Tex. _____KPRC	Vida, Mont. _____KGCX	Wilmington, N. C. _____WRBT
Superior, Wis. _____WEBC	Waco, Tex. _____WJAD	Winston-Salem, N. C. _____WSJS
Sylvan, Ore. _____KOIN	Washington, D. C. _____WMAL	Wissinoming, Pa. _____WOL
Sylvan Lake, Mich. _____WJR	Washington, D. C. _____WOL	Wolf Point, Mont. _____KGCX
Syracuse, N. Y. _____WFBF	Washington, D. C. _____WRC	Woodside, N. Y. _____WVRL
Syracuse, N. Y. _____WSTYR	Washington, D. C. _____WJSV	Worcester, Mass. _____WORC
Tacoma, Wash. _____KVI	Washington, D. C. _____NAA	Worcester, Mass. _____WTAG
Tacoma, Wash. _____KMO	Washington, Pa. _____WNBW	Yakima, Wash. _____KIT
Tampa, Fla. _____WMBR	Waterloo, Ia. _____WMT	Yankton, S. D. _____WNAX
Terre Haute, Ind. _____WBOW	Watertown, S. D. _____KGCR	Yonkers, N. Y. _____WCOH
Tifton, Ga. _____WRBI	Weirton, W. Va. _____WQBZ	York, Neb. _____KGBZ
Tilton, N. H. _____WBRL	Wellesley, Mass. _____WBSO	Youngstown, O. _____WKBN
Toccoa, Ga. _____WTFI	Westcott, Minn. _____KSTP	Ypsilanti, Mich. _____WJBK
Toledo, O. _____WSPD	West DePere, Wis. _____WHBY	Yuma, Colo. _____KGEK
Topeka, Kans. _____WIBW	West Fargo, N. D. _____WDAY	Zion, Ill. _____WCB D
Trenton, N. J. _____WOAX	W. Lafayette, Ind. _____WBAA	
Trinidad, Colo. _____KGIW		
Troy, N. Y. _____WHAZ		

Broadcasting Stations of Canada and New-foundland

Alphabetically by Cities

Bowmanville, Ont. _____CKGW	London, Ont. _____CNRL	Sea Island, B. C. _____CJOR
Brandon, Man. _____CKX	Middlechurch, Man. _____CJRX	Summerside, P.E.I. _____CHGS
Calgary, Alta. _____CFAC	Midland, Ont. _____CKPR	Sydney, N. S. _____CJCB
Calgary, Alta. _____CFCN	Moncton, N. B. _____CNRA	Toronto, Ont. _____CFCA
Calgary, Alta. _____CHCA	Montreal, Quebec _____CFCF	Toronto, Ont. _____CJBC
Calgary, Alta. _____CJ CJ	Montreal, Quebec _____CKAC	Toronto, Ont. _____CJCL
Calgary, Alta. _____CNRC	Montreal, Quebec _____CHYC	Toronto, Ont. _____CKNC
Charlottetown, P. E. I. _____CFCY	Montreal, Quebec _____CNRM	Toronto, Ont. _____CKOW
Charlottetown, P. E. I. _____CHCK	Moose Jaw, Sask. _____CJRM	Toronto, Ont. _____CNRT
Chatham, Ont. _____CFCO	Mt. Hamilton, Ont. _____CHML	Vancouver, B. C. _____CHLS
Chilliwack, B. C. _____CHWK	Ottawa, Ont. _____CKCO	Vancouver, B. C. _____CKCD
Cobalt, Ont. _____CKMC	Ottawa, Ont. _____CNRO	Vancouver, B. C. _____CKFC
Edmonton, Alta. _____CHMA	Prescott, Ont. _____CFLC	Vancouver, B. C. _____CKM
Edmonton, Alta. _____CJCA	Preston, Ont. _____CKPC	Vancouver, B. C. _____CKWX
Edmonton, Alta. _____CKUA	Quebec, Quebec _____CHRC	Vancouver, B. C. _____CNRV
Edmonton, Alta. _____CNRE	Quebec, Quebec _____CKCI	Victoria, B. C. _____CFCT
Fleming, Sask. _____CJRW	Quebec, Quebec _____CKCV	Waterloo, Ont. _____CKCR
Frederickton, N. B. _____CFNB	Quebec, Quebec _____CNRQ	Winnipeg, Man. _____CNRW
Hallifax, N. S. _____CHNS	Red Deer, Alta. _____CHCT	Winnipeg, Man. _____CKY
Hamilton, Ont. _____CHCS	Red Deer, Alta. _____CKLC	Wolfville, N. S. _____CKIC
Hamilton, Ont. _____CKOK	Regina, Sask. _____CFCR	Yorkton, Sask. _____CJGX
Iroquois Falls, Ont. _____CFCH	Regina, Sask. _____CHWC	
Kamloops, B. C. _____CFJC	Regina, Sask. _____CJBR	
Kingston, Ont. _____CFRC	Regina, Sask. _____CKCK	
Kings Township, York Co., Ont. _____CFRB	Regina, Sask. _____CNRN	
Lethbridge, Alta. _____CJOC	St. Hyacinthe, P.Q. _____CKSH	
London, Ont. _____CJGC	St. John, N. B. _____CFRO	
	Saskatoon, Sask. _____CFQC	
	Saskatoon, Sask. _____CJHS	
	Saskatoon, Sask. _____CNRS	

Newfoundland

St. John's _____8WMC

See Special Offer for Subscriptions sent in now for KELLER'S RADIO CALL BOOK AND LOG on last page of this issue. The only Radio Magazine that informs you of all Broadcasting Station changes monthly.

Foreign Broadcasting Stations

City	Call Signal	Meters	Power Watts.	City	Call Signal	Meters	Power Watts
San Jose	COSTA RICA			Rio de Janeiro	BRAZIL—Continued		
	CUBA			Sao Paulo	SQAJ	260	500
Calbarien	6EV	250	50	Sao Paulo	SQBO	225.4	1000
Calbarien	6LO	325	250	Sao Paulo	SQAG	360	1000
Cienfuegos	6BY	260	200		CHILE		
Colon	5EV	360	100	Antofagasta	CMAO		
Habana	PWHH	376	500	Concepcion	CMAI	345	1500
Habana	CMC	347	500	Santiago	CMAD	320	1000
Habana	2HP	205	200	Santiago	CMAE	280	100
Habana	2OK	360	100	Taena	CMAT	550	200
Habana	2RK	326	50	Talcahuano			
Habana	2UF	228	100	Temuco	CMAK	245	100
Habana	2WX	261	150	Vulparaiso		400	50
Habana	2XA	230	200		PARAGUAY		
Marlano	2MA	277	50	Asuncion			12
Santiago	8HS	200	30		PERU		
Santiago	8BY	150	30	Lima	OAX	360	1500
Tuinucu	6KW	368	100		URUGUAY		
	GUATEMALA			Montevideo	CWOA	428.4	1000
Guatemala		310	1000	Montevideo	CWOF	300	100
	HAITI			Montevideo	CWOL	272	100
Port au Prince	HHK	361.2	1000	Montevideo	CWON	256.5	200
	MEXICO			Montevideo	CWOR	350	500
Chihuahua	CZF	310	250	Montevideo	CWOS	380	500
Mazatlan	CYR	475	250	Montevideo	CWOW		500
Merida	CYY	548	100	Salta	CWOI	272	50
Mexico City	CYA	300	500		VENEZUELA		
Mexico City	CYB	275	500	Caracas	AYRE	375	1000
Mexico City	CYH	375	100		AUSTRIA		
Mexico City	CYJ	400	2000	Graz		365.8	500
Mexico City	CYL	400	500	Innsbruck		294.1	500
Mexico City	CYO	425	100	Klagenfurt		272.7	500
Mexico City	CYX	325	500	Linz			500
Mexico City	CZE	350	500	Vienna	ORV	517.2	14000
Monterey		311	250	Vienna	EATH	37	
Monterey	CYH			Vienna	OHK2	70	
Oaxaca	CYF	265	100		BELGIUM		
Pueblo	CYU	312	100	Antwerp		265.5	100
Tampico	CYQ	322	100	Brussels	BAV	508.5	1500
Tampico	CYZ		20	Brussels		230	
Torreon	CYM	225	1500	Ghent		275	
Vera Cruz	CYC	337	50	Liege		205	100
Vera Cruz	CYD			Liege		294.1	100
	SALVADOR				CZECHOSLOVAKIA		
Salvador	AQM	482	500	Bratislav	OKR	300	500
	ARGENTINA			Brunn	OKB	441.2	2400
Buenos Aires	B2	275	100	Kosice	OKK	263	2000
Buenos Aires	D3	253.3	100	Prague	OKP	384.9	5000
Buenos Aires	LOJ	270	1000		DANZIG		
Buenos Aires	LOL	236	2000	Danzig		272.7	
Buenos Aires	LON	210	5000		DENMARK		
Buenos Aires	LOO	252	1000	Copenhagen	DTRL	42.12-84.25	
Buenos Aires	LOQ	261.8	3000	Copenhagen	DTMK	32.05	
Buenos Aires	LOR	344.8	1000	Copenhagen		337	500
Buenos Aires	LOS	291.2	5000	Kalundborg		1535	7500
Buenos Aires	LOT	400	1000	Soro		1153.8	1500
Buenos Aires	LOV	361.5	1000		ESTHONIA		
Buenos Aires	LOW	303	1000	Tallinn		408	700
Buenos Aires	LOX	380	1000	Tallinn		408	700
Buenos Aires	LOY	215.2	1000		FINLAND		
Buenos Aires	LOZ	330	1000	Bjorneborg		254.2	100
Cordoba	H5	275	100	(Por)			
La Plata	LOP	425	1000	Helsingfors		500	1000
Mendoza	LOU	350	500	Helsingfors		240	2060
Rosario	F2	270	100	Jakobstad		275	200
	BOLIVIA			(Pletersanki)			
La Paz		175	50	Jyvaskyla		297	200
La Paz		300	50	Lahtis		1525	40000
La Paz				Lahtis		318	180
	BRAZIL			Tammerfors		400	250
Bahia	SKV	600	50	(Tampere)			
Juiz de Fora	SQUAY	380	200		FRANCE		
Pernambuco		310	300	Agen	2BD	297-30.7	500
Porto Alegre				Bamboul			
Rio de Janeiro	SQAA	400	2000	Beziers		180	
Rio de Janeiro	SQAB	310	500	Birritz		198	
				Bordeaux		419	1500

City	Call Signal	Meters	Power Watts
FRANCE—Continued			
Chateau Thierry	_____	_____	_____
Fecamp	_____	200	_____
Lille	_____	267.3	_____
Limoges	_____	295	_____
Lyon	YN	480	_____
Lyon	YR	290-40.2	5000
Marseille	_____	300	1000
Mont de Marsan	_____	390	300
Montpellier	_____	238	200
Nancy	_____	15.5	_____
Nice	_____	246	_____
Nimes	_____	240	_____
Nogent sur Seine	F8AV	80	_____
Paris	FL	2650	20000
Paris	FPTT	458	1000
Paris	F8GC	350-61	500
Paris	_____	340.9	500
Paris	_____	1750	3000
Paris	_____	308-37	250
Rennes	_____	294	1500
Strasbourg	_____	222.2	_____
Toulouse	MRD	260	1000
Toulouse	_____	389.6	2000
GERMANY			
Augsburg	_____	566	700
Berlin	_____	488.9	800
Berlin	AFT	2900	8000
Berlin	_____	566	2000
Berlin	_____	2525	_____
Bremen	_____	252.1	700
Breslau	_____	322.6	4000
Doberitz	AFK	37.6-67.6	_____
Dirtmund	_____	283	700
Dresden	_____	275.3	700
Elberfeld	_____	468.8	750
Frankfort-on-the-Main	_____	428.6	4000
Freiburg	_____	577	750
Gleiwitz	_____	250	700
Hamburg	_____	394.7	4000
Hanover	_____	297	700
Kaiserlautern	_____	204.1	4000
Kassel	_____	272.7	700
Kiel	_____	254.2	700
Konigsberg	_____	329.7	4000
Langenberg	_____	468.8	8000
Leipzig	_____	365.8	4000
Muenster	_____	241.9	1500
Munich	_____	555.7	4000
Nauen	AGC	17.2	_____
Nauen	AGJ	56.7	_____
Nuremberg	_____	303	750
Schaerbeck	_____	230	_____
Stettin	_____	236.2	700
Stuttgart	_____	379.7	4000
HUNGARY			
Budapest	MT1	555.6	2000
Budapest	MT2	1050	400
Budapest	MT3	_____	1200
ICELAND			
Akureyri	G2SH	192	_____
Reykjavik	_____	333.3	500
IRISH FREE STATE			
Cork	6CK	400	1000
Dublin	2RN	319.1	1500
ITALY			
Geona	_____	_____	6000
Milan	IMI	315.8	7000
Naples	INA	333.8	1500
Rome	IRO	449	3000
Rome	IAX	45	_____
LATVIA			
Riga	KCX	526.3	2000
LITHUANIA			
Kovno	_____	2000	2000
LUXEMBERG			
Luxemburg	LOAA	217.4	250

City	Call Signal	Meters	Power Watts
NETHERLANDS			
De Bilt	PCFF	1100	_____
Hilversum	HDO	1060	1000
Hilversum	PCJJ	30.2-31.4	_____
Hulzen	_____	1840-340.9	_____
Kootwijk	_____	184	25000
Scheveningen	_____	1875	_____
NORWAY			
Bergen	_____	370.4	1500
Bergen	LGN	30	_____
Halesund	_____	_____	_____
Oslo	_____	370.4	1500
Porsgrund	_____	405	1000
Stavanger	_____	277.6	1500
Tromsø	_____	_____	_____
Trondhjem	_____	243.9	1000
POLAND			
Katowice	_____	422	2000
Krakow	_____	422	1300
Poznan	_____	270.3	1500
Warsaw	_____	1111.1	8000
Wilna	_____	_____	_____
PORTUGAL			
Lisbon	PIAA	305	500
Lisbon	_____	_____	_____
RUMANIA			
Rumania has no broadcasting station. There have been persistent statements made that such a station is in operation, but investigation reveals that no basis exists for this belief. A broadcasting company has been promulgated by royal decree, and a station in Bucharest is projected, together with nine other stations, construction on none of these has started.			
SPAIN			
Almeria	_____	320	1000
Barcelona	EAJ1	344.8	1000
Barcelona	EAJ13	462	1000
Bilbao	EAJ9	434.8	1000
Cadiz	EAJ3	400	1000
Cartagena	EAJ16	330	1000
Madrid	EAJ2	420	600
Madrid	EAJ7	375	1200
Madrid	EAM	30.7	_____
Malaga	EAJ25	100	100
Oviedo	EAJ19	280.4	200
Salamanca	EAJ27	500	500
San Sebastian	EAJ8	297	3000
Seville	EAJ17	434.8	600
SWEDEN			
Boden	SASE	1190	600
Bores	SMYB	230.8	150
Eskilstuna	SMUC	250	200
Falun	SMZK	335.3	500
Gavle	SMXF	204.1	200
Goteborg	SASB	416.1	600
Halmstad	SMSB	215.8	200
Halsingborg	SMYE	229	200
Hudiksvall	SMSL	272.7	150
Jonkopings	SMZD	201.3	250
Kalmar	SMSV	254.2	200
Karlsborg	SAS	52.5	_____
Karlskrona	SMSM	196	200
Karlstad	SMXG	220.6	250
Kirona	SMTG	238.1	400
Kristinehamn	SMTI	202.7	250
Malmherget	SMXO	400	250
Malmo	SASC	260.9	600
Motala	SASG	1880	30000
Norrkoping	SMVV	275.2	250
Orebro	SMTI	236.2	200
Ormskoldsvik	SMZA	222.2	200
Ostersund	SASF	720	600
Saffle	SMTS	252.1	400
Stockholm	SASA	454.5	1000
Sundsvall	SASD	545.6	600
Trollhattan	SMXQ	278.8	400
Uddevalla	SMZP	294.1	500
Umea	SMSM	229	200
Uppsala	SMRM	500	150
Varberg	SMSO	297	300

City	Call Signal	Meters	Power Watts	City	Call Signal	Meters	Power Watts
SWITZERLAND							
Basel	HB3	1000	300	Harbin	COHB	445	—
Berne	—	411-32	1500	Mukden	COMK	425	2000
Geneva	HB1	760	500	Shanghai	—	342	250
Lausanne	HP2	850	600	Shanghai	—	342	250
Zurich	H9XD	86-32	1500	Shanghai	—	342	250
Zurich	—	500	1500	Tientsin	XOL	480	500
UNITED KINGDOM							
Aberdeen	2BD	500	1500	Seoul	JODK	357	1000
Belfast	2BE	306.1	1500	DUTCH EAST INDIES			
Birmingham	5IT	326.1	1500	Batavia	JFC	220.7	40
Bournemouth	6BM	491.8	1500	Malabar	ANH	—	—
Cardiff	5WA	353	1500	Surabaya	—	140	500
Caterham	2NM	32.5	—	Surabaya	—	175	—
Daventry	5XX	1600	16000	HONG KONG			
Daventry	5SW	24	—	Victoria	GOW	300	1500
Dundee	2DE	294	200	INDIA			
Edinburgh	2EH	288.5	500	Bombay	2AX	320	50
Glasgow	5SC	405.4	1500	Bombay	2FV	387	100
Hull	6KH	294	200	Bombay	7BY	357.1	3000
Leeds, Bradford	2LS	277.8-252.1	500	Madras	2GR	400	200
Liverpool	6LV	297	200	Calcutta	7CA	370.4	3000
London	2LO	361.4	3000	JAPAN			
Manchester	2ZY	384.6	1500	Hiraslo	JHBB	37.5	—
Newcastle	5NO	312.5	1500	Hiroshima	JOFK	353	—
Nottingham	5NG	275.2	200	Kumamoto	JOJK	380	2000
Plymouth	5PY	400	200	Nagoya	JOCK	360	1000
Sheffield	6FL	272.7	200	Osaka	JOBK	385	1000
Stoke-on-Trent	6ST	294	200	Talpeh	JFAB	39.5	—
Swansea	5SX	294	200	Tokyo	JOAK	375	1000
				KWANGTUNG			
				Dalren	JQAK	395	5000
				STAITS SETTLEMENTS			
				Singapore	ISE	330	100
YUGOSLAVIA				AUSTRALIA			
Zagreb	—	275.2	100	Adelaide	5CL	392	1000
RUSSIA				Adelaide	5DN	313	100
Armavir	RA47	720	200	Bathurst	2MK	—	—
Artemorsk	RA56	790	1200	Brisbane	4CM	278	50
Astrakhan	RA26	700	1000	Brisbane	4MB	337	250
Baku	RA45	750	4000	Brisbane	4QG	385	1000
Bogorodsk	RA8	750	790	Hobart	7ZL	525	3000
Dnepropetrovsk	RA30	525	1000	Melbourne	3AR	484	320
Erlvan	RA49	1050	1200	Melbourne	3LO	371	1000
Gomel	RA39	925	1200	Northbridge	2UW	263	100
Irkutsk	RA57	1100	500	Perth	6WF	1250	1000
Kharkov	RA43	475-1700	4000	Rockhampton	4RN	323	100
Kiev	RA45	775	1200	Sydney	2RL	353	1000
Koursk	RA34	575	1000	Sydney	2FC	442	2000
Krasnodar	RA38	513	1000	Sydney	2GB	326	1500
Leningrad	RA42	1000	10000	Sydney	2KY	280	300
Leningrad	RA59	150	350	Sydney	2UE	297	50
Minsk	RA18	860	1200	Sydney	2WA	462	100
Moscow	RA1	1450	40000	NEW ZEALAND			
Moscow	RA2	450	500	Auckland	— IYA	420	500
Moscow	RA4	450	300	Christchurch	3AC	400	500
Natchik	RA67	1075	240	Dunedin	4YA	380	110
Nizhni-	—	—	—	Palmerston	22F	280	—
Novgorod	RA13	840	1800	Wellington	2YK	295	60
Novorossisk	RA32	1117	4000	ALGERIA			
Odessa	RA40	975	1200	Algiers	—	310	100
Orenburg	RA25	640	1000	Algiers	8DB	310	100
Petrozavodsk	RA46	765	2000	CANARY ISLANDS			
Rostov-on-Don	RA14	820	4000	Las Palmas	EAR5	250-350	200
Samara	RA22	900	1200	EGYPT			
Smolensk	RA72	150	800	Cairo	SRE	255	—
Stalino	RA77	780	1200	KENYA			
Stavropol	RA20	550	1200	Nairobi	7LO	400-35	—
Sverdlovsk	RA15	1050	500	MOROCCO			
Tashkent	RA27	715	2000	Casablanca	CNO	305	25
Tiflis	RA11	870	4000	Casablanca	AIN	51	—
Tver	RA44	690	1200	Rabat	—	416	—
Vel Ustjuk	RA16	650	1200	TUNISIA			
Vladivostok	RA17	480	1500	Carthage	TNU	1850	—
Vologda	RA41	875	1200	Constantine	8KR	42.8	—
				Tunis	TUA	45-1450	100
TURKEY				UNION OF SOUTH AFRICA			
Osmanleh	—	1200	6000	Cape Town	—	372	1200
CEYLON				Durban	—	398	1200
Colombo	—	800	1500	Johannesburg	JB	32-443.5	—
				Pretoria	—	323	—

Short Wave Broadcasting Stations

(Authorized Experimental Relay Broadcasting Stations.)

UNITED STATES

Call Signal	Location	Watts	Keys	Meters	Owner
W1XAZ	E. Springfield, Mass.	10000	9570	31.35	West. E. & M. Co.
W2XBR	New York, N. Y.	1000	6020	49.83	Baruchrome Corp.
W2XAL	Coytesville, N. J.	500	6040	49.67	Aviat'n Rad. Sta., Inc.
W2XCX	Kearney, N. J.	500	6080	49.34	L. Bamberger & Co.
W2XE	Richmond Hill, N. Y.	5000	6120	49.02	Atlantic Brdstg. Corp.
W2XAL	Coytesville, N. J.	500	11800	25.42	Aviat'n Rad. Sta., Inc.
W2XAL	Coytesville, N. J.	500	15250	19.67	Aviat'n Rad. Sta., Inc.
W2XAL	Coytesville, N. J.	500	21460	13.97	Aviat'n Rad. Sta., Inc.
W3XAU	Philadelphia, Pa.	500	6060	49.50	Univers. Brdstg. Co.
W3XAL	Bound Brook, N. J.	20000	6100	49.18	Radio Corp. of Am.
W3XAL	Bound Brook, N. J.	20000	9570	31.35	Radio Corp. of Am.
W3XAL	Bound Brook, N. J.	20000	11720	25.60	Radio Corp. of Am.
W3XAL	Bound Brook, N. J.	20000	15130	19.83	Radio Corp. of Am.
W3XAL	Bound Brook, N. J.	20000	17780	16.87	Radio Corp. of Am.
W3XAL	Bound Brook, N. J.	20000	21500	13.95	Radio Corp. of Am.
W3XAU	Philadelphia, Pa.	500	9590	31.30	Univers. Brdstg. Co.
W6XAL	Westminster, Cal.	15000	21500	13.95	Pac. W. Brdstg. Fed.
W6XAL	Westminster, Cal.	15000	6080	49.34	Pac. W. Brdstg. Fed.
W6XAL	Westminster, Cal.	15000	15250	19.67	Pac. W. Brdstg. Fed.
W8XAL	Harrison, Ohio	250	6060	49.50	Crosley Radio Corp.
W8XK	Pittsburgh, Pa.	20000	21540	13.93	West. E. & M. Co.
W8XK	Pittsburgh, Pa.	20000	6140	48.86	West. E. & M. Co.
W8XK	Pittsburgh, Pa.	20000	11880	25.25	West E. & M. Co.
W8XK	Pittsburgh, Pa.	20000	15210	19.72	West E. & M. Co.
W8XK	Pittsburgh, Pa.	20000	9570	31.35	West. E. & M. Co.
W9XAA	Chicago, Ill.	500	17780	16.87	Chi. Fed. of Lab.
W9XF	Downers Grove, Ill.	5000	21500	13.95	Gr. Lks. Brdstg. Co.
W9XF	Downers Grove, Ill.	5000	6020	49.83	Gr. Lks. Brdstg. Co.
W9XF	Downers Grove, Ill.	5000	11800	25.42	Gr. Lks. Brdstg. Co.
W9XU	Council Bluffs, Iowa	500	6060	49.50	Mona Motor Oil Co.
W9XAA	Chicago, Ill.	500	6080	49.34	Chi. Fed. of Lab.
W9XAA	Chicago, Ill.	500	11840	25.33	Chi. Fed. of Lab.
NAA	Arlington, Va.	—	—	—	U. S. Naval Sta.

See Foreign Short Wave Stations on Next Page.

MAIL THIS SUBSCRIPTION BLANK TODAY! (See Other Side)

"The Best Circuits"

Practical New Hand Book for every Radio "fan" who wants to know all about the latest custom-built Radio Receiving Sets, Power Packs, Electro-Dynamic Speakers, etc. Only the best known and most approved circuits are included, both A. C. and D. C. Tells how to adapt the new A. C. Tubes to ANY Receiving Set without any re-wiring, thus doing away with all batteries. Tells how to operate any D. C. tube set from an electric light socket without changing a wire.

Every Radio enthusiast should have this interesting and useful Hand Book.

SPECIAL (For a limited time)

Price,
postpaid **50c**

(No Postage Stamps Accepted)

"The Best Circuits" (latest issue) and
ONE YEAR'S SUBSCRIPTION to "Keller's
Radio Call Book and Log," issued
Monthly, excepting July and August, all
for

\$1.25

(5-8)

W. A. KELLER COMPANY, *Publishers*
ST. PAUL, MINN.

Short Wave Broadcasting Stations—Continued

FOREIGN

CANADA				DENMARK			
Call	Location	Watts	Meters	Signal	Location	Watts	Meters
CJRX	Winnipeg, Man. (Middle Church)	2000	25.6	D7RL	Copenhagen		42.1
					Copenhagen		49.3
				D7RI	Copenhagen		84.0
				D7MK	Copenhagen	750	31.5
				OXQ	Copenhagen		31.5
ENGLAND				AUSTRIA			
5SW	Chelmsford	3000	24.0	EATH	Vienna		37.0
2NM	Caterham		32.5	OHK2	Vienna		70.0
FRANCE				MOROCCO			
	Paris		6122 Kyscs.	A1N	Casablanca		51.0
F8GC	Paris	500	61.0				
	Paris	250	37.0	TUNISIA			
	Nancy		15.5	8KR	Constantine		42.8
F8AV	Nogent		80.0	TUA	Tunis	100	45.0
GERMANY				SOUTH AFRICA			
AFT	Berlin	10000	54.0	JB	Johannesburg	900	32.0
AFK	Doberitz		37.6	EGYPT			
AFK	Doberitz		67.6	7LO	Nairobi	2000	33.5
	Konigs Wusterhausen		31.4	KENYA			
	Konigs Wusterhausen		49.8	A1N	Casablanca		51.0
AGC	Nauen		17.2	BRAZIL			
AGJ	Nauen		56.7	SQBE	Bahia		24.0
					Para		34.0
HOLLAND				AUSTRALIA			
PBF5	Eindhoven		41.3	2BL	Sydney	1000	32.5
PCJJ	Hilversum	1000	30.2	2FC	Sydney	2000	28.5
PCJJ	Hilversum	1000	31.4	2ME	Sydney		28.5
PCLL	Kootwijk	25000	18.0	VK2ME	Sydney		31.3
PCLL	Kootwijk	25000	32.0	VK3ME	Sydney		31.6
ITALY				3LO	Melbourne	1000	32.0
IIAX	Rome		45.0	6AG	Perth		32.9
				HRB			49.9
NORWAY							48.9
LGN	Bergen		30.0				48.9
							48.2
SPAIN							45.6
EAM	Madrid		30.7				44.9
							43.1
SWITZERLAND				JAPAN			
H9XD	Zurich	1500	85.0	JHBB	Hirasio		37.5
H9XD	Zurich	1500	32.0	JFAB	Taipah		39.5
H9OC	Berne	1500	32.0	DUTCH EAST INDIES			
			48.9	ANH	Malabar		17.0
			31.3				31.5
RUSSIA							31.4
RFN	Moscow		29.0	MEXICO			
RFM	Khabarovsk		31.4	XFA	Mexico City	50	42.0
				XC51	Mexico City		44.0
SWEDEN							
SAS	Karlsborg		52.5				
SASH	Motala		49.5				

SUBSCRIPTION BLANK

KELLER'S RADIO CALL BOOK AND LOG

PUBLISHED MONTHLY (EXCEPTING JULY AND AUGUST)

Subscription Price: \$1.00 Per Year (Ten Issues). The issues of March, June, September and December, contain a complete List of all Broadcasting Stations of the world, revised to date of issue; the other issues contain all changes in Broadcasting Stations that have occurred during the previous month, besides much current information concerning Broadcasting Stations, etc., of interest to those who "listen in."

W. A. KELLER COMPANY,

West Third and Exchange Streets, St. Paul, Minn.

Gentlemen: Enclosed find Money Order or Bank Draft for \$_____ for which please enter my subscription for KELLER'S RADIO CALL BOOK to be mailed to me as issued, for One Year, beginning with the issue of _____ 19____

and

SPECIAL!

(FOR A LIMITED TIME)
 "The BEST CIRCUITS" (latest issue) and One Year's Subscription to Keller's Radio Call Book, including ten issues, **\$1.25**
 for _____

(See Other Side)

NOTE: See the preceding page for SPECIAL OFFER.

NAME _____

Street and No. or R. F. D. _____

P. O. _____ State _____

THE "TYPE 111" A. C. RECEIVER—Continued from page 4

with an excellent frequency characteristic, they seriously impaired the sensitivity of the receiver. The combination of the band-selector circuit and the special type of transformer coupling employed in the "111" results in an ideal co-ordination of sensitivity, selectivity and uniformity of frequency amplification. Freedom from attenuation of the higher audio frequencies allows a brilliance of reproduction otherwise not obtainable.

As has previously been said, the gang condenser is held in construction to an accuracy of $\frac{1}{4}$ of one per cent on a frequency basis. Balancing condensers are provided so that the various circuits can be accurately lined up. These are adjusted at the factory. Volume is controlled by means of a 100,000 ohm variable resistor which governs the voltage applied to the shield-grids of the radio frequency tubes.

The A. C. shield-grid power detector is of the grid-bias type. The principal advantage of the power detector is that it provides an output volume sufficiently high that the audio amplification necessary is lessened. A smaller degree of audio amplification means less noise and greater freedom from distortion. The grid-bias type of detector acts as a radio frequency amplifier, since rectification takes place in the plate circuit, while the grid-condenser, grid-leak detector acts as an audio frequency amplifier. The extra radio frequency amplification provided by the grid-bias detector reduces still further the amount of audio amplification necessary. The power detector provides linear detection with its freedom from harmonic distortion.

The power detector is resistance-coupled to the first audio tube. Resistance coupling provides the high external plate circuit load necessary for adequate voltage transformer from the shield-grid tube. It has, moreover, an essentially flat frequency characteristic over the full band of audio frequencies. The large detector output voltage makes the voltage step-up ratio which might be supplied by a transformer unnecessary.

Two '27 heater tubes are used in parallel in the first audio stage because of the improved frequency characteristic which they provide and because of their ability to handle more power than a single tube. The plate impedances of tubes in parallel are in parallel so that the effective tube plate impedance presented to the external circuit is equal to half the impedance of a single tube. It will be remembered that if most of the voltage developed by the tube is to appear across the external circuit as useful output, the impedance of the external circuit must be high as compared with the tube plate impedances. It will also be remembered that the impedance of the audio transformer primary is not constant and that it decreases with frequency. The relation between the audio transformer primary impedance and the tube plate impedance will therefore become increasingly favorable as the tube plate impedance becomes lower. This advantage is particularly noticeable for the lower audio frequencies.

The advantages of push-pull amplification are pretty generally recognized. Tubes in push-pull are capable of in the neighborhood of twice the undistorted power output of a single tube. Distortion due to even harmonics is eliminated as these harmonics balance out in the push-pull circuit. When the filaments of the audio tubes are operated from A. C. the hum is effectively eliminated in the push-pull arrangement.

The '45 tube has about the same maximum undistorted power output at 250 volts on the plate as the '40 type of tube with 425 volts on the plate. The '45 tube is intermediate between the '71A and '50 tubes. It is designed for operation from an A. C. filament supply source.

The great advantage offered by the '45 tube is that it provides a large undistorted power output with comparatively low plate voltage. The fact that the plate voltage required for the '45 tube is low for maximum output makes the '45 an economical tube to use since the ratings of the power supply components are lower and they can be constructed and sold at considerably lower cost. As the voltage ratings of the power supply components are raised, their cost goes up very rapidly.

A single '45 tube provides a maximum undistorted power output of 1,600 milliwatts at a plate voltage of 250. At the same plate voltage, two '40 tubes in push-pull will deliver a maximum undistorted power output of 3,200 milliwatts, which is equivalent to the output of a single '50 tube at a plate voltage of 400 volts.

The over-all audio frequency characteristic of the Type 111 Receiver is most excellent. There is a natural reproduction of the bass with consequent depth and roundness of tone and yet the higher musical register, in which lie the overtones which provide snap and brilliance and natural voice reproduction, has not been neglected. Reproduction is natural and true; besides, the volume obtainable without distortion is more than ample for the home or a small hall.

The Type 111 Receiver may be mounted in a cabinet of almost any kind but preferably in a console cabinet with a lower compartment in which the amplifier and power unit can be accommodated.

A speaker of any type may be used but a dynamic speaker of the 90-110 volt D. C. concert type may be used, as the field current for a speaker of this type is supplied by the power unit of the Type 111 Receiver. A Wright-DeCoster 90-110 volt A. C. Dynamic Concert Speaker is especially recommended as being the most satisfactory to use with this or any other receiving set. This speaker stands in the very front rank as a perfect reproducer. It can be modulated from a whisper to a volume that will fill a large hall and its cost is within the easy reach of every purchaser. It can be mounted by anyone in the cabinet with the receiving set, or can be obtained in a separate cabinet of its own. The Wright-DeCoster Speaker will handle any amount of volume without the slightest distortion and with a quality of reproduction that will at once astonish and delight every listener.

NOTE: The publishers of this magazine are not in the Radio business. This article is published for the information of its readers only, but if any further details are desired concerning this, or any other article in this issue, they will be given, cheerfully, if postage is enclosed for reply.—Editor.

We Are Prepared to Supply
**RADIO CALL
BOOKS**

(Without our name on them)

*in Attractive Special Editions
for Advertising Purposes*

to Banks, Manufacturers, Merchants, etc., at very low prices, according to the quantity ordered. Any title may be printed on the front cover, and any desired advertising on the other pages of cover. Our name does not appear anywhere on or in these books.

The most valuable advertising specialty obtainable, because everyone is interested in Radio Broadcasting. Always revised up to the date of printing and absolutely authentic.

We are selling these Special Radio Call Books all over the United States and have received many re-orders for them, besides many complimentary letters.

Send 10c in postage for sample copy and prices, stating the approximate number of copies required.

ADVERTISING SPECIALTY SALESMEN

make money selling these Special Edition Radio Call Books. Write for particulars, giving references and enclosing 10c for sample copy.

W. A. KELLER COMPANY, Publishers

West Third and Exchange Streets

ST. PAUL, MINN.