

Vote for Your Favorite Radio Announcer—**BALLOT IN THIS ISSUE**

N. S. E.

Radio

and

Entertainment

in and around
ST. LOUIS

RAE

Week
Ending
Sept. 10
1932



ROSE HOBART (KMOX)
In "Roses and Drums" Sunday

PRICE **5**¢
PUBLISHED
WEEKLY

Hour-by-Hour Program Listings for the Week

World Radio History

Radio and Entertainment

Published Weekly by the

Metropolitan Publishing Company

EARLE A. MEYER, Managing Editor NANCY FRAZER, Editor

Editorial and Business Offices—

311 SOUTH THIRD STREET

ST. LOUIS, MO.

Telephone, CHestnut 9148

Entered as second-class matter February 8, 1932, at the Post Office at St. Louis, Missouri, under the Act of March 3, 1879.

MICROPHONICS

Gene Tunney is to be a campaign speaker and King Kill Kare, NBC's humorist philosopher, predicts he will climb the political ladder round by round.

Now that a business revival has been detected, Ben Bernie, NBC's "old maestro," wants to know if the days of the minor profits aren't about over.

"Women is funny," says "Pic" Malone of NBC's Friendship Town. "Afore we was married, mah wife used to admire mah noble brow. Now all I hears is what a bonehead I is."

Staying out late at night in the Arctic is a serious matter, according to Ed Wynn, Texaco's Fire Chief. He says an Eskimo husband sometimes doesn't get home until half past February or the middle of March.

"A woman doesn't consider herself properly marcelled until she has gone to Reno and permanently waived her husband."—Frank McCravy, of the McCravy Brothers, NBC hearthside singers.

The return of the old custom of barter in lieu of cash is heartily approved by Jack Benny, NBC master of ceremonies. "Now when a bill collector calls," says Jack, "all a fellow has to do is to take him into the garden and fork over the vegetables."

Buddy Rogers knows a college boy so expert he can tell the owner of any lipstick in the country club by merely tasting it.

"It isn't the eyes, but the lower part of the face that betrays one's thoughts," declared a lecturer on the NBC air channels. "Especially when one opens the lower part of one's face," added Walter O'Keefe.

Harry Richman is investing in baby bonds again. For a long time he refrained because he said he lost too much sleep getting up in the night and walking the floor with them.

Johnny Hart, NBC's Big Timer, claims to have found in a Sixth Avenue cordial shop a wine brick so potent that it does its own plastering.

"Only a slave to art becomes its master," is a framed legend in the studio of Dave Rubinoff, NBC maestro.

In Ecuador the barbers are agitating against the importation of American safety razors. Ray Perkins, NBC Barbasoloist, says its because a safety razor is practically useless in a revolution.

With wheat advancing in the market, Andy Sannella, NBC conductor and instrumentalist, suggests it won't be long now before dough will again be a synonym for money.

"The battle against the depression has been won," declared a speaker on NBC. "Good," exclaimed Lanny Ross, NBC tenor, "now the employers can cease firing."

Liszt's stately "Second Polonaise" will contrast with "Alexander's Ragtime Band" during the concert by Cavallo and his Symphonic Band of 65 pieces, to be broadcast from Grant Park in Chicago Sunday, 6:15 to 7 p. m. over KWK.

Harry Sosnik and Bill Moss, billed as the "Magic Piano Twins," will inaugurate a new two-piano series over WABC and the Columbia network Friday from 9 to 9:15 a. m.

We Are Specialists in Finger
And Permanent Waving

Elvira Beauty Shop

3630 BATES STREET

You've Tried the Rest—
Now Try the Best.



A CALENDAR of THINGS HAPPENING and COMING

Movies

AMBASSADOR:
"The Crooner" with Ann Dvorak, David Manners and Ken Murray. Thurston and Company of 35 on the stage in a Jay Mills show.

FOX:
Will Rogers in "Down to Earth" with Irene Rich. Allan Jones, Munny Opera favorite on the stage in a Fanchon and Marco "Rookies" idea.

LOEW'S STATE:
Marion Davies in "Blondies of the Follies."

MISSOURI:
Maurice Chevalier and Jeanette MacDonald in "Love Me Tonight."

Circus

Ringling and Barnum and Bailey's Circus with 1000 new foreign features, September 3, 4, and 5.

Drama

The Dramatic League of St. Louis in production of "The Prophet."

Baseball

SPORTSMAN'S PARK:
Browns vs. Chicago, September 4.

Browns vs. Cleveland, September 5, 6.

Browns vs. Washington, September, 8, 9, 10.

Conventions

Missouri Elks' Assn., Fall 1932.
Steuben Society of America, Sept. 3-5—1932.

Alpha Delta Gamma Fraternity, Sept. 8-10—1932.

COMING AND GOING

By Fleet Smith

THURSTON AT POPULAR PRICES

Thurston, the greatest of all magicians, is at the Ambassador Theatre, for one week. He brings the same big company that has assisted him for years in the leading legitimate theatres of the country.

This will be the master necromancer's first appearance in St. Louis in over two years and the first time he has ever played here at popular prices.

NEW CHEVALIER FILM

"Love Me To-Night," the latest picture starring the inimitable Maurice Chevalier, is this week's feature attraction at the Missouri Theater in St. Louis. Jeanette MacDonald, who was co-starred with the popular French musical comedy idol in "The Love Parade," is again seen as his leading lady in this latest picture.

Other members of the all-star cast include Charlie Ruggles, Myrna Loy, Charles Butterworth, C. Aubrey Smith, Blanche Frederici, Bert Roach and Marion Byron. Naturally enough the story is set to music and both Chevalier and Miss MacDonald sing several new song hits during the course of the film.

ANOTHER SCOOP

The Fox Theater offers another theatrical scoop this week — a personal appearance of Allan Jones, the Munny Opera "find." Last week's show at the Fox was the best balanced bill we have ever seen in a movie-variety house and this week promises more. We have never witnessed such bargains in entertainment.

Norman Brokenshire, William Brenton, Don Ball, Andre Baruch and James S. Wallington are to be seen and heard in Paramount's film "The Big Broadcast," now in production.

ON THE COVER

Rose Hobart, stage and screen actress with the "dreamy eyes," will be heard in the leading role of "Roses and Drums" on KMOX at 4:30 p.m. Sunday. The program is sponsored by the Union Central Life Insurance Company.

Henry, Zeb and Otto, famous harmony and comedy team on the KMOX staff, have been signed for stage appearances. One of their first engagements will take them to the Ritz Theatre in Farmington, Missouri, on September 8.

New Programs on NBC's Schedule

National Broadcasting Company
Has Many New Features
For Its Networks

Radio programs which found favor with National Broadcasting Company listeners during the summer months will continue to reach their audiences during the new fall and winter season. A survey of NBC sponsored programs reveals that a small percentage of advertisers will discontinue broadcasting at the end of the summer, and that their places on the air will be filled immediately with new offerings.

Those programs which will continue to reach listeners over eastern and midwestern networks of the NBC include:

Armour program, The First Nighter, Barbasol program with Ray Perkins, Canada Dry program, The Old Singing Master, Carnation Contented program, American Album of Familiar Music, Rin Tin Tin Thrillers, Everyday Beauty, Friendship Town, Radio Household Institute, Cities Service Concerts, Thru the Looking Glass, Clicquot Club, Paul Whiteman's Orchestra, Clara, Lu 'n' Em, Maxwell House program, Jolly Bill and Jane, The Household program, Enna Jettick Melodies, Wayne King and His Lady Esther Orchestra, Thompkins Corners, Nestle's Chocolateers, The Singing Lady, Tower Health Exercises, Phillips Lord in The Country Doctor, Jack Frost's Melody Moments, Amos 'n' Andy, Pond's Dance program, El Toro Week End Revue, The Wheatworth program, Sinclair Minstrels, The Yeast Foamers, The Royal Vagabonds, The Goldbergs, Chase and Sanborn, Big Time, Rameses program, the Fleischmann program, Pat Barnes in Person, Soconyland Sketches, Ed Wynn and The Fire Chief Band, Lowell Thomas, Blackstone Plantation, the Stebbins Boys, the Mobiloil Concert, Wild-root Institute.

Programs which expired at the end of the summer, but whose sponsors have already indicated their intention of continuing the

broadcasts for the fall and winter without interruption follow:

The Steero program, Lucky Strike, Billie Jones and Ernie Hare, Betty Crocker, A. & P. Gypsies, Iodent program, Corn Cob Pipe Club of Virginia, Tangee Musical Dreams, Sheaffer Life-time Revue, Tastyest Jesters.

(Continued on Page 10)

THE ANNOUNCERS' DERBY

Showing a brilliant display of speed going into the home stretch of the announcers' popularity derby, Bob Holt, of KMOX gained several lengths on France Laux, also of KMOX, who was still in the lead. Holt ran 39 votes ahead of the leader during the week, with Holland E. Engle, of the same station, following closely. Franklyn MacCormack, WIL star, who has been running an indifferent race thus far, finally showed signs of getting into stride. He was fourth in the week's balloting, with his co-worker, Neil Norman in the fifth position.

Following is a result of the week's voting:

Bob Holt	56	Billy Lang	8
Holland E. Engle	46	Woody Klose	4
France Laux	34	Bob Enoch	2
Franklyn MacCormack	20	Harold Bolande	2
Neil Norman	13		

A special ballot good for ten votes will be found in this issue. Now is the time to help your favorite announcer pick up speed.

"MYRT 'N' MARGE" ADD FOUR NEW VOICES TO CAST

Four new voices, and faces, have joined the cast of "Myrt and Marge" for the resumption of its five-a-week schedule over the KMOX-Columbia network.

Cornelia Osgood is playing the part of Dixie Lane, who formerly entered into the script only through reference. Tom Post is supplying the German dialect for the characterization of Max Schwartz, the musical director. Carl Hackett is playing the part of Dave Andrews, dancing director, while Frank Seay takes the part of Smithson, production director.

TONY WONS BACK ON AIR MONDAY

The familiar "Are you listening?" again will be heard over KMOX when Tony Wons returns with his scrapbook philosophy on Monday, after a vacation of several months.

Tony's broadcasts will be resumed according to his former schedule—every morning except Sunday at 7:30 o'clock.

Wons spent his vacation at his cabin situated deep in the woods at Eagle River, Wis., far removed from microphones and radio sets.

LABOR DAY TO BE OBSERVED ON THE ETHER WAVES

The observance of Labor Day on the air will begin Sunday when Frank Morrison, secretary of the American Federation of Labor will be heard over the Columbia network in a talk on "The Closed and Open Shop." The talk is scheduled for 11 a. m., Sunday. It will mark the first of a series of talks on "Labor and the Nation."

Morrison will be heard again on Monday on the subject of "The Unemployment Situation and the Five-Day Week." This discussion is set for 11 a. m., over an NBC network.

WIL TO BOOST ILLINOIS TOWN

Southern Illinois will make its bow to the radio audience over WIL Tuesday, August 30, in a series of programs designed to call attention particularly to Edwardsville as a good place in which to trade or to live. The programs are sponsored by a group of merchants and professional men of Edwardsville.

March of Time Returns to Air

Radio Fans Anxiously Await
Return of Famous Program
Friday

The "March of Time" will resume its progress over the nationwide KMOX-Columbia network Friday from 6:30 to 7 p. m.

A cast of fifty players under the direction of Donald Stauffer will re-enact the chief news developments of each week and an orchestra under the guidance of Howard Barlow will furnish the suitable musical background for each of the news dramatizations, as well as serving as a "curtain" between the various news scenes. The scripts will be prepared by Thomas Everitt, who has been spending the summer travelling through various parts of the country in order to familiarize himself with local conditions.

Of primary interest in American affairs will be the Presidential Campaign and election. Outstanding developments in this quadrennial struggle will be reflected during the course of the "March of Time." President Hoover will be played by Ted di Corsia, who filled the role in the last series. Franklin D. Roosevelt's "ghost" will be William Adams. The latter is a particularly happy bit of casting for Adams was trained in the Democratic tradition; his father, the late Perry Adams of Ohio, was speaker pro-tem of the State Senate at Columbus at the time of his death.

"Each week," Stauffer, youthful director of the series, said in a recent interview, "we will re-enact from six to eight of the chief current events."

The dramatizations are 'spot' scripts, most of which are re-enactments of actual events.

TEN VOTES

RADIO and ENTERTAINMENT
ST. LOUIS RADIO ANNOUNCER
POPULARITY CONTEST

(Announcer)

NBC's Music Appreciation Course Had 6,000,000 Auditors Last Year

Copies of Walter Damrosch's 1932-33 Music Appreciation Course manual, as well as the students note book, are ready for mailing and soon will reach public school teachers, music instructors and club leaders.

It is anticipated that more than 75,000 copies of the manual will be supplied this year before the beginning of the Music Appreciation Hour, to be conducted by Dr. Damrosch for the fifth consecutive season over National Broadcasting Company networks.

Several thousand additional copies of the manual are expected to be mailed out after the opening of the weekly series, on Friday, October 14, over a combined coast-to-coast NBC network.

The manuals, are supplied to public School teachers, music teachers, and clubs without cost.

The students' notebooks will be supplied to students and teachers on a non-profit basis. They were prepared by Dr. Charles H. Farnsworth, former professor of music education, Teachers College, Columbia University.

Early indications are that Damrosch's classes will be even larger during the 1932-33 series than last year when an estimate by public school superintendents and music teachers, indicated more than 6,000,000 public school children alone were following Damrosch's instructions.

STOOPNAGLE AND BUDD GO ON NEW SCHEDULE MONDAY

Colonel Lemuel Q. Stoopnagle and Budd will begin a new series of sustaining broadcasts over a nationwide Columbia network commencing Labor Day.

The new schedule will present the Colonel and Budd every Monday and Friday from 8:15 to 8:30 p. m., over a nationwide network of more than sixty Columbia stations.

They will be heard over KMOX on Fridays only.

Shortly after the start of their new series of broadcasts, they will begin an extended tour of the Middlewest which will take them to theaters in St. Louis, Chicago, Milwaukee, Cincinnati, Detroit and other cities in which their program is heard.

We're Telling You

By Fleet Smith

... We can't really believe that the last names of Myrt and Marge are Spear and Minter... but the "Spearminster" press agent has christened them thus... George McElhiney, Jr. back from New York, predicts commercials will be off the networks in two years and that the latter will be used only for "piping" entertainment... commercials then will be localized... Thus far this year radio advertising in the United States is reported to be about \$3,000,000 above last year... WIL is planning a series of community broadcasts... Lucille Dorman, KMOX's new find is now known to the radio audience as "The Brown-Eyed Blues Singer"... "Hank" Richards spends his "Restful Hour" in a radio-equipped motor boat on the Forest Park lagoons... he checks other stations' programs in this restful manner... "Billy" Lang, WIL's "Old Night Watchman" is again on his rounds following a vacation... Ruth Betz's Uncle is press agent for Ringling Brothers Circus... Closing of the opera season was followed by a home-coming at WIL, with Allan Clark and Eddie Wacker returning to the studio... Nelson Darragh has another radio station... having bought the Stephens College plant at Columbia... this station covers the "dead spot" section of Missouri for some unknown reason unreached by the networks and metropolitan stations... Funny thing about radio... Rav Schmidt carries a black umbrella... any significance?... Harlan Eugene Read, the Katy News Commentator has the distinction of being the only local broadcaster in "Who's Who in America"... He is listed as writer and editor... Woody Klose is vacationing... KMOX now has a remote control line running direct to the editorial rooms of the Star-Times... for hot news flashes... "Abe" Hendry WIL salesman, reports "bull market" in commercial broadcasting... with an increasing number of new contracts... P. A. Watson, formerly with this "Mag" is now with WIL... Bill West, KMOX operations manager, is a high frequency fisherman... On a recent trip to the Ozarks he landed 18 black bass measuring about 100 watts apiece... Russ Colombo who landed in New York from the Pacific Coast with \$50 and two suits, is now reported to be getting \$7500 a week... A radio fan, who heard Nancy Frazer's interview with Al Lyons on KMOX recently, opines in a letter that Al has the finest speaking voice ever heard on the air... Nancy Frazer, by the way, is in New York interviewing some "big time" stars... Following question is asked by "one of them"... "The local swains are wondering who's the striking brunette seen about town with Hank Richards." —F. S.

COUNTY FAIR HAS LARGE ATTENDANCE

Although the KMOX County Fair has been only the last three consecutive Saturday nights, it has attracted a vast following. The various "attractions," featuring staff artists in addition to receiving stacks of mail, attracted 800 spectators to the studio auditorium in the Mart building for the show last Saturday night.

They came early — for the "little" Fair at 9 p. m., and stayed right through for the "big" show, which began at 10:15 and was run continuously until midnight.

They were unable to decide which team won the honors and they were divided upon who should win in the fiddlers' contest. Throughout the performances they could be observed laughing hilariously at Henry, Zeb and Otto, and Dr. CuCu; beaming approvingly upon the Holman Sisters in a two piano act; and humming snatches of appealing songs offered by the groups of vocalists.

GRAIN OUTLOOK TO BE DISCUSSED

... chairman of
... of Agricul-
... ee, will
... s Out-
... Farm
... 1:30
... er

Something to Scan



Y Thomas sings over the Columbia network to the ac-
... iment of Gus Arnheim and his orchestra. Dorothy is a
... Texas, girl and came to radio via Hollywood where
... vered her.

WIL Whatnots

By Catherine Snodgrass

We are happy to welcome back to the staff of WIL, Henrietta Jordan who returns to this station after scoring numerous successes in many other parts of the country.

Miss Jordan is an unusually talented musician, having studied under several outstanding teachers in the East. In addition to her radio work, Miss Jordan was featured organist in Balaban & Katz Theaters in Chicago and toured the east and middle-west appearing in RKO Vaudeville houses.

Henrietta Jordan will present popular and semi-classical selections on the Wicks Radio Organ every morning and afternoon. We are sure the friends of WIL join this station in extending Miss Jordan a hearty welcome and best wishes for a long and pleasant stay at WIL.

The Norge Norsemen, a musical program in which songs of the Northland will be featured, will be heard regularly over Radio Station WIL each Monday, Wednesday and Friday at 5:30 p. m. Otto Reinert, musical director of the station, has prepared a distinctive theme opening and signature and has arranged a series of programs which will be decidedly unique.

The program will be sponsored by the North Grand Norge Company, 2334 North Grand boulevard.

Yanner Alexander, woman's page editor of Radio and Entertainment, will "pinch hit" for Nancy Mary, "The Modern Girl Philosopher," during the latter's absence on a trip to New York. Miss Alexander, a talented young newspaper woman, will conduct a program entitled "For the Feminine Ear" and will be heard on Wednesday and Friday at 3:15 p. m.

A new program known as "The Inquiring Reporter" has been inaugurated by WIL and will continue as a regular feature of this station every evening at six o'clock except Sunday.

Each day "The Inquiring Reporter," equipped with a question pertaining to a current topic or condition, visits many different parts of St. Louis and vicinity to perform his task of gathering expressions of opinion regarding the question selected for that particular day from the men and women whom he casually meets out the street.

The answers to the questions are reported by "The Inquiring Reporter" on the following evening. These accumulated replies give a cross-section of what our friends and neighbors are thinking about pertinent questions, surely a matter of interest to all of us.

So be on the "Lookout" for WIL's "Inquiring Reporter" because you are apt to meet him any place and at any hour.

In \$6000 Radio Mystery



NBC'S \$6,000 radio mystery drama, "The Phantom of Crestwood," is on the air with Eunice Howard in the leading role. Installments of the mystery thriller are heard over KSD every Friday night at 8:30 o'clock. At the end of the sixth episode prizes totaling \$6000 will be distributed to listeners offering the best solutions.

Back-of-the-Headlines Drama To Have KMOX Premiere Sunday

Unusual phases and vital facts of the story back-of-the-headlines, of a Broadway "torch" singer involved in the mysterious death of her wealthy young husband, will provide the theme for the opening drama of the new series entitled, "Eyes of the World," over KMOX Sunday, at 1:30 p. m.

The scripts for this series to be broadcast over this station at this time every Sunday are being written, directed and acted in by Don Hunt, who is also known for his ability as a writer of music and lyrics as well as for his editorial and histrionic talents. Whenever special music is required according to the script demands, Hunt sits down at the piano and works out the melody and pencils out the instrumental arrangements.

Lucille Dorman, KMOX blues singer is admirably cast as the Broadway singer, playing opposite Hunt in this first program.

The next sketch of the series, to be broadcast Sunday, September 11, will have its setting in the coal mining region of Illinois and will reveal some of the cumulative results of the strike.

The A. S. Aloe Company of St. Louis sponsor the series.

Dramatist



DON Hunt, KMOX dramatist and composer, who will direct and act in a new series of broadcasts dramatizing current events.

KMOX ADDS NEW ORCHESTRA FOR RADIO DANCERS

Charlie Booth and his popular Castle Ball Room orchestra have been added to the KMOX orchestra line-up. Beginning Saturday, September 10, their famous syn-copations will be heard every Tuesday, Thursday and Saturday in broadcasts at 12:15 to 12:30 a. m., and every Sunday from 10:10 to 10:30 p. m. In addition to these periods, they will also be presented during the Sunday afternoon matinee.

This new dance maestro plays string bass and tuba and directs eight men equally as versatile.

Among the other bands furnishing KMOX with late evening rhythmic programs are those of Ted Weems; Al Lyons; WBBM orchestras featured in "Around the Town in Chicagoland," heard here each night from 11 p. m. to 12; Guy Lombardo; Gus Arnheim; Ozzie Nelson and Harold Stern.

PATRI'S TALKS TO BE RESUMED

Talks on "Your Child" by Angelo Patri, authority on child training, will be resumed over the KMOX-Columbia network on Wednesday, September 7, for a period of 39 weeks.

They will be presented every Wednesday and Sunday at 5:15 p. m., with a rebroadcast at 9:15 p. m., for far Western listeners. The talks are sponsored by the Cream of Wheat Corporation of Minneapolis.

Patri, who has devoted his career to child study, is a New York public school authority. He was born in Italy of a distinguished family and came to America at the age of six. His sympathetic and sound advices are known to millions of parents through his many writings on child psychology and education, and his "Your Child" talks which were broadcast over the KMOX-Columbia network from September, 1931, to May, 1932.

WRIGLEY'S TRIBE RETURNS TO AIR

The "Lone Wolf Tribe", the three-a-week juvenile series broadcast last winter and spring over KMOX and the Columbia network, will return to the air on its old schedule Monday. The episodes again will be broadcast each Monday, Wednesday and Friday, from 2:45 to 3 p. m.

During the former run of this series, sponsored by the William Wrigley Jr. Company, more than 350,000 juvenile listeners were "initiated" into the tribe.

Harlan Eugene Read, Engineer of "Katy News Express" Is

Man of Letters

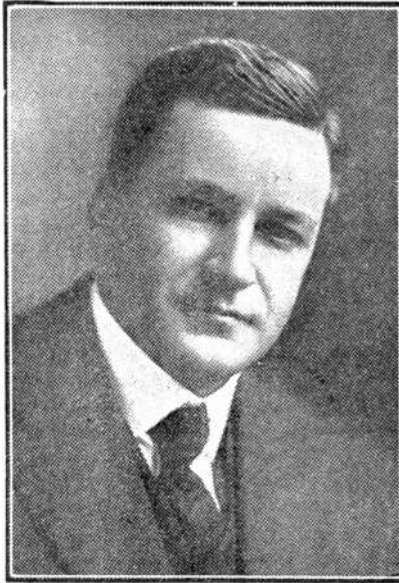
By Nancy Frazer

Giving a complete picture of the news events of the world as it rotates and wabbles upon its axis to move uncertainly on each day is the objective of Harlan Eugene Read, news commentator, heard on KMOX nightly at 9:45 p.m. Ambitious objective it is but done in fifteen minutes, it is an incomparable achievement.

Not content with merely telling the events that transpire each day, Mr. Read sums them up with happenings that have gone before and relates the world wide developments as to their effect upon this country and upon each other.

Mr. Read (and we can't help but wonder if there is any significance in the name Read and reading) is well equipped to analyze the news and present it as he is a lecturer of note, a novelist, teacher and has long been connected with newspaper work. He knows news and he knows the significance of happenings in both this country and in Europe because of his widely traveled experience and his background.

It is not a mere fifteen minute program of newspaper reading which it would seem to be as his voice comes easily over the air each night, but one that involves eight hours daily of concentration and study. He reads the newspapers throughout the country and gleans from them all of the information which he deems of an instructive and interesting nature to his listeners. He essays to present a balanced account of the news so that it will be interesting, helpful and entertaining.



Although Mr. Read, who was once the author and participant in a comic skit on KMOX known as Mike and Mary gossipers with Democratic leaning, is a Democrat himself (an out and out one he says) he presents his news without any partisan leaning. He says that the only complaints that he has had have come from three Democrats who claimed that he was Republican in his news giving, so he has attained his aim.

It is difficult to maintain a balance throughout this period of political high tension but Mr. Read leaves out his own leanings on the subject and gives the news merely as he sees it whether it be of one party or the other.

Radio is not a new field for this commentator for he was the first person to attempt to broadcast lessons over the air from a station in Peoria, Illinois some ten years ago. He was at that time owner of business colleges throughout this section and he presented lessons in typing, spelling and bookkeeping in a light comprehensive way over the air. He was a pointer in that usage of radio.

His comments upon radio and the future as one who has his finger so constantly upon the trend of events and developments are most enthusiastic for he foresees radio as the paramount means of communication of education and entertainment in the years that are to come.

"You can present any form of material in an interesting talking program", says Mr. Read. "It but needs to have a lightness of touch, interjected with plenty of humor to make it comprehensive and entertaining. I try to make all of my programs within the understanding and interest of every person."

"Since I am dealing with the two types of persons; those who read the news avidly and look to me for interpretation, and those who are too busy to read the papers and expect me to give the trend of events in a nut shell, I try to make it lightly interesting."

Mr. Read, who is a graduate of Oxford University in England came to St. Louis from Illinois some twenty years ago and has carried on his literary work from here. He is the author of the novel "Thurman Lucas" and numerous books of a business nature.

RADIO MATINEE IS LIKE POPULAR VAUDEVILLE SHOW

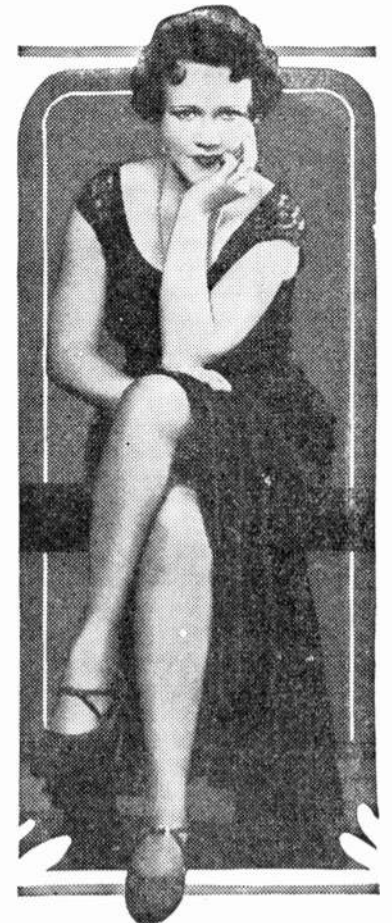
Sunday afternoon at KMOX has become a period of something for everyone. Finding the preferred entertainment for every mood is merely a matter of setting the dial at 1090 kilocycles and keeping it there. Try some of these highspots of the broadcast:

Matinee curtain at 1:45 p. m.—Headliners—the Banjo Kings; Vess Ossman and Sunny Joe Wolverton, billed in all of the big vaudeville houses throughout the United States and Europe; The Holman Sisters, youthful piano duo; Henry, Zeb and Otto, comedy and harmony team; Ernest Hares, organist; the Royal Hawaiians.

Vocal artists: Emerson Brown, classic baritone; Wayne Fletcher, featured as the Levee Man singing his songs to guitar accompaniment; Lucille Dorman, the "brown-eyed blues singer;" Ted Straeter's Three Best Girls;" and the Mississippians, a popular male trio.

Curtain and close at 4 p. m.

Oh! Miss Mizznick



DOROTHY Harrington, blonde young stage and radio actress who fills the role of Beatrice Mizznick, daughter of "Meyer the Buyer," in Harry Hershfield's comedy series of that name over KMOX.

Pat Barnes, One-Man-Show Has Played 30 Roles

"Patrick Henry" must have been an inspired title, for how were the elder Mr. and Mrs. Barnes to know, when Pat made his "world debut" in Sharon, Pa., that their son was to become famous for his utterances?

Yet that fame has been his for more than a decade, since he wrote and presented "A Buck On Leave" at about the time the World War began to subside in France.

Pat came to radio as an announcer for WHT, Chicago, when "announcer" meant announcing, pinch hitting in programs, sweep-



Pat Barnes (right) and Larry Larson, Who Plays His Organ Accompaniments.

ing out and well nigh everything.

The real advent, however, for this man of many voices, occurred a little more than seven years ago, when his one-man programs made a hit. Veteran listeners will recall those musical weather reports, the sessions with the "Old Timer" and "Your Honor"—all Pat's own.

His present series of "Jimmy and Grandad" skits, in which he has impersonated more than thirty characters, is heard over KWK each day except Sunday at 10:15 a. m.

Allister Wylie, Radio's "Piano Stylist" Is An Inspired Musician

BY PRIN BROWN

A dreamily, poetic expression in his grey eyes is that which identifies Allister Wylie as a musician. One glance at them and you know immediately that he is one who is expressing himself in a literary or musical fashion or else he should be for the soul of artistic genius is to be found in them.

For the rest, he is an athletic, forceful, handsome looking young man, plus a deep cleft in a very determined looking chin, who seems to represent almost any type of young business man who is thoroughly American.

Peering in through the studio's windows at WIL at almost any hour of the day or night, though, he is to be found at the piano, with his collar open and his trusty pipe deeply concentrating upon some piano arrangement. He seems to be lost in his music just as he loses other people in it when his gifted, commanding programs are sent over the air.

He is the staff pianist at the station who plays accompaniments for singers, who takes his place in the studio orchestra and who has programs of his own billed as the "Piano Stylist." All of the arrangements are different and all need his concentrated effort to in-

roduce into them novelty which will make them outstanding. He must be equipped to play everything from the most difficult orchestral numbers to transposing music to fit whatever key the singers wish.

Of all types of broadcast music, the popular music ranks first, he says, as well as for solo work for the piano. Difficult classical solos take time and work and for the purpose of injecting his own peculiar personality into them, he must constantly be at work in order to make them novel and different. Light piano novelties are just as difficult to play as classical numbers in order to make them appealing and outstanding.

His own programs are inspired and he plays just what suits his particular mood although he does try to balance the fifteen minutes by playing his own arrangements of two popular numbers, two novelty features and one classical selection. His own theme number is "Meditation" by Lee Sims with an original beginning and ending of his own composition.

Wylie has been identified with the musical life of St. Louis for the past ten years, playing with dance and theatre orchestras, directing his own orchestra and has been with WIL for the past two



years where he has commanded a following second to none in the city.

He is quiet of demeanor and even when he is a part of the assemblies at the station which meet to talk over the day's undertakings, he seems to be a trifle far

away as if he were mentally interposing an archipegio or a tricky trill into his next composition. It is the dreamy far-away look in his eyes which makes one know that he is a musician because he loves it and because it gives him pleasure to thus express himself.

Stebbins Boys Are Authentic "Way Down Easters"

The spirit of northern New England as it can be portrayed only by Down Easters, is the reason for the authenticity of rural Maine life in the Stebbins Boys sketches over National Broadcasting Company networks.

The Stebbins Boys—Esley (Arthur Allen) and John (Parker Fennelly) — do not broadcast rustic life as it is often heard on the stage. Their sketches must ring true.

The Stebbins Boys are heard each evening except Saturday and Sunday over KWK at 5:30 p. m., under the sponsorship of Swift & Co. Their locale is in the general store at Bucksport Point, Maine, and the adventures enacted over

the air contain the bits of philosophy, intrigue, politics, quarrels and general atmosphere of a small Down East community.

John and Esley are bachelors. Neither has ever roamed far from the little Maine village, in contrast to the third brother, Captain Bill, the skipper of an old-fashioned four-masted schooner. The boys are probably in their late fifties and, as most bachelors, somewhat fastidious and temperamental.

John is quiet, level headed and patient. Esley is quarrelsome, sharp tongued and hasty. However, the boys always pull together in emergencies.

Arthur Allen who plays John

Stebbins, is a veteran character actor of stage and radio. He was born and spent his boyhood in Gowanda, New York, and turned to amateur theatricals at an early age. He attended Oberlin College, studied music and then joined a dramatic stock company. Allen jumped to Broadway, playing character roles on the legitimate stage, and then transferred his activities from the footlights to the microphone.

Parker Fennelly who plays John Stebbins, is truly a Down Easter. Fennelly was born on Mount Desert Island in Northeast Harbor, just off the coast of Maine near Bar Harbor. Now a summer resort, the island was for many gen-

erations a fishing center, populated by typical New Englanders. Fennelly grew up there, seeing little of the outside world until he reached manhood, he moved to Boston and attended a dramatic school.

Fennelly began his professional career with a Shakespearean company and for several years played Hamlet, Othello and King Lear from coast to coast. For fifteen years he tramped with stock companies, Broadway and experimental theaters. He appeared in plays with Nance O'Neil, Arthur Byron, Walter Huston, Roland Young and others whose names today are as well known on stage and screen as his on the air.

FOR THE FEMININE EAR

Whisperings From The Ether

BY YANNER ALEXANDER



DRESSING FICTION HEROINES

* * *

THE NEW HAIRCUTS

* * *

BLACK IS CHIC

* * *

CHILLED FRESH SHRIMPS

HOWARD Rokey, author whose heroines are said to be the best dressed women in fiction, confesses that it is his wife, a New York fashion designer, who conceives and describes their costumes.

Speaking on Ida Bailey Allen's program over KMOX the other day, Rokey said that an adequate word picture of a girl's apparel is even more important as a guide to her personality than a description of her physical appearance . . . and you can thank his wife for that piece of wisdom. Women themselves have always known that their personalities and clothes are spiritual twins.

MODERATELY short haircuts have more in their favor than mere suitability with tiny hats and the high furred collars of the new fall and winter coats. They're youthful and charming. Here's an unusual hairdressing just through the customs:

Parting in a line starting nearly at the center of the forehead and going back diagonally toward the right, the hair at the left is brushed back to expose the left side of the forehead. The right side of the hair is brushed down from the part and arranged in a feathered windblown effect partially covering the right side of the forehead.

NOW that Mme. Sylvia has been joined by N. E. Meadows in the great crusade to make gals beautiful via the radio, I wonder what the poor deserted Hollywood stars will do . . . grow fat and ugly, or tune in? Meadows, who used to be consulting beauty expert for the major movie studios, still treats some of the stage and screen actresses as part of his broadcasts. But, even the most publicity loving star wouldn't like to have those hearty slaps of Sylvia's connect with her anatomy for sound effects.

WHAT with all the uproar about the dark reds, the growing popularity of green, especially as a trimming, the new shades of brown pass almost unnoticed. A few of the more discriminating stylists consider them the best bets for late fall and winter because of their steadier, although less spectacular, rise. While very dark green is rarely seen, bright hues are favorites. The browns have a reddish cast instead of last season's yellow. It's no news that black is chic, it's a tradition.

BUYING presents for your house during its semi-annual beauty treatment, do notice the new range of decorative metals. Bronze, pewter, even silver, must move over to make room for aluminum and chromium. Copper and brass are being handled in unorthodox ways and aluminum may soon appear in color.

ATEA is just about the nicest and withal the simplest form of entertaining about now. While bridge may be included, the food you serve is the main attraction next to your own charming self. Here are some tea tricks to add to your collection:

Eggs that will fool your friends—just good clean fun—are split open just enough to have the yolk removed, mashed and seasoned and returned to the whites. For rolled watercress sandwiches use the freshest bread in the thinnest slices to wrap around the cress and let little sprigs stick out at each end. Keep these in the refrigerator, wrapped in a damp cloth until serving time.

Chilled fresh shrimps to be dipped in a bowl of Russian dressing are lusciously different. Men like these: Sausages blanketed in pie-crust, served hot and eaten with your fingers, and mixed cream and Roquefort cheese, with dressing and finely chopped chives to spread on the potato chips. And so does this girl.

Keeping a Husband Is More Important Than Winning One—Here's Nancy Mary's Formula

Winning a husband is important these days but keeping him is an item of vastly greater importance and one which is more likely to be based upon cleverness upon your part.

Being a wife, as has so often been said truly before, is a real life-time job and one that requires patience and effort. But the reward is immeasurable because it brings usually that intangible priceless thing known as happiness. You can't use subtle means of attracting a man then expect because you have married the object of your undertakings that you will be happy by just letting things slide and expecting happiness to be handed to both of you on the proverbial silver platter.

There are things that you have got to be clever about, there are things that you must give up and there are things that you must work at in order to make the success of marriage that it can be. Of course the same goes for men but then, long before these problems troubled either you or me, men were conceded to keep their loves rather strangers to the rest of their lives. So it is up to the woman to keep on making herself alluringly necessary.

Here are some dos and don'ts on the subject of the great business of keeping your husband once you have him:

Don't give yourself, your thoughts and interests entirely over to his keeping. It is well to establish the union of thoughts and tastes but have other interests too which will enable you to keep your mind and time occupied interestingly. Your husband has them no matter how close you two are and so must you.

Don't parade his pet foibles out for others to laugh at and know about. They are sweet possessions of your life together and should be kept under your own roof. They make "good copy" as they say in the newspaper game, and make good subjects of conversation but find something else to talk about for it is just possible that he may be a trifle touchy about his failings and whatnot.

Don't meet him at the door with all of the trying duties of the day. Let him have a few minutes peace away from the rigors of the office and of seeing people.

Seek to make him comfortable when he is at home but remember that it is his home too and let him have as much say-so as he likes and do the things there that he likes.

Respect him, especially when the children are around. Don't

talk to them about his faults—they want to think that he is wonderful and he wants them to.

Don't make plans for his time without consulting him. His total self doesn't belong to you, you know. Don't be possessive of him in public. A man hates to think that his freedom is limited. Of his own free will and because of convention and custom of hundreds of years, you will come first with him so long as you don't make him see what he owes you.

Primarily, keep yourself as lovely, as graceful, as well-dressed, as dainty and as interesting as you possibly can. A woman is a great mystery to a man in thought and action and you keep that illusion for him by not being abject and being square-shooting, sincere and virtuous.

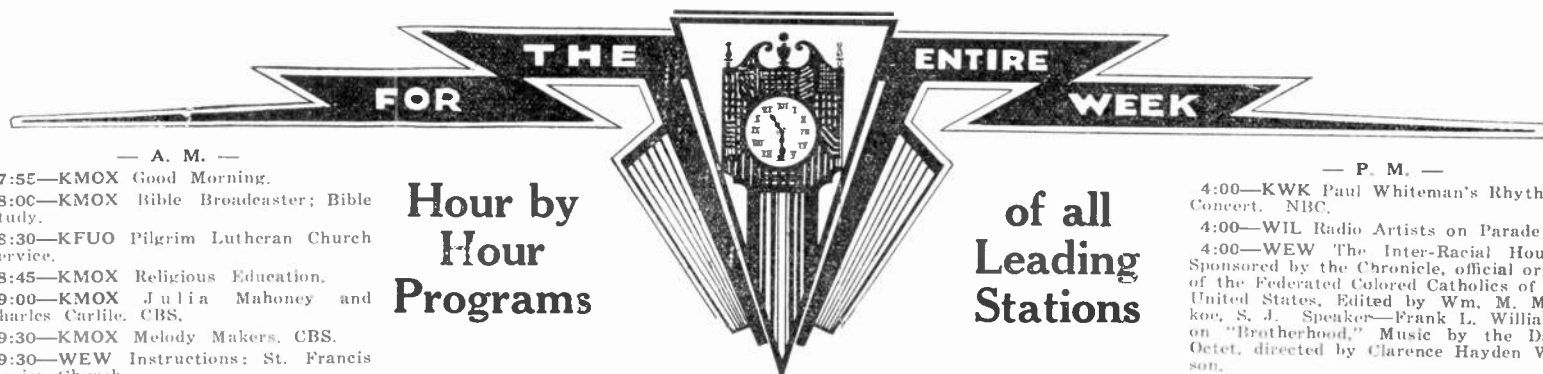
On Women's Hour



COYITA Bunch, 7355 Lindell Avenue whose deep-toned voice is now heard as a staff artist in the KMOX Women's Hour at 10 o'clock a. m. sings the popular melodies of the day in a manner of her own.

Miss Bunch has sung recently with the orchestra of Joe Reichman in his broadcast programs from the Chase roof. She is a daughter of Burton Bunch, former manager of auditions for the Atwater Kent Foundation, who recently returned to St. Louis from Washington, D. C.

RADIO PROGRAM TIME-TABLES



— A. M. —

7:55—KMOX Good Morning.
8:00—KMOX Bible Broadcaster; Bible Study.
8:30—KFUO Pilgrim Lutheran Church Service.
8:45—KMOX Religious Education.
9:00—KMOX Julia Mahoney and Charles Carlile, CBS.
9:30—KMOX Melody Makers, CBS.
9:30—WEW Instructions; St. Francis Xavier Church.
10:00—KMOX Salt Lake City Tabernacle Choir and Organ, CBS.
10:00—KFUO Bible Study; Pilgrim Lutheran Church.
10:30—KMOX Reis and Dunn, CBS.
10:45—KMOX Watch Tower Program.
10:45—KFUO Pilgrim Lutheran Church Service.
10:55—WEW Music and Sermon of High Mass.
11:00—KMOX Fourth Church of Christ Scientist.
11:00—WIL Third Baptist Church Service—Dr. Oscar C. Johnson.
12:00—KMOX Thirty Minute Men, CBS
12:00—WIL Noontday Musicale — Dick Malloy; Vocalist.
12:00—KFUO Organ Recital.

— P. M. —

12:30—KMOX Ann Leaf at the Organ.
12:30—KSD Moonshine and Honeysuckle
12:30—KWK Charlie Agnew's Orchestra with Irene Taylor, Contralto, NBC.
12:30—WIL Sunday Organ Melodies.
1:00—KMOX Symphonic Hour; Howard Barlow, Conductor, CBS.
1:00—KSD Gus Arnheim's Orchestra.
1:00—KWK "Our American Music."
1:00—WIL Songs that Never Grow Old—Studio Orchestra, Bigalze Electric Co.
1:00—WEW Midwest Hour.
1:15—WIL Afro-American Minstrel.
1:30—KMOX "Eyes of the World"—New Drama Series.
1:30—KSD Stars of Tomorrow.
1:30—KWK Forty Eighth Highlanders Military Band, NBC.
1:30—WIL Deutscher Ruckfunk.
1:30—WEW Gourley Variety Duo.
1:45—KMOX KMOX Sunday Matinee; Featuring Henry, Zeb and Otto; The Holman Sisters; The Banjo Kings; Ernest Hares; The Royal Hawaiians; The Mississippians, Male Trio; Ted Straeter's Three Best Girls; Lucille Dorman; Emerson Brown and Wayne Pletcher.
1:45—WEW Records.
2:00—KSD Jane Froman and Orchestra
2:00—KWK Temple of Song; Chicago A Capella Choir, NBC.
2:00—WIL Spotlight Players.
2:00—WEW "Links of Love" Program
2:15—KSD Elizabeth May and Vee Lawnhurst.
2:15—WIL Piano Silhouettes.
2:30—KSD Trio Charmante.
2:30—KWK Highlights of the Bible.
2:30—WIL George L. Weber's Sparklers—Studio Orchestra.
2:30—WEW Schira School of Music.
2:45—KSD Songsters.
3:00—KWK Sabbath Reveries, NBC.
3:00—WIL Jimmy Greer's Orch. (T)
3:00—KFUO German Gospel Hour.
3:00—WEW Havard-Waples College Club Orchestra.
3:15—WIL Afro-American Minstrel.
3:30—KWK Road to Romany, NBC.
Echo from "Don" River, Jerome.
Tant Que Le Jour
Soprano, solo, Genia Fonariova,
Selections from "Madame Sherry,"
A Gipsy's Jig.
Troika.
Soprano solo, Genia Fonariova,
An Eich.
Hungarian Dance No. 2.
3:30—WIL Musical Memories and Allen Wills.
3:30—KFUO Shut in hour.
3:30—WEW Musical Program — Mrs. Ferrell Buchanan Bentley.
3:45—WEW Anita Martin.
4:00—KMOX St. Louis Community Forum; Speakers and Music.

Hour by
Hour
Programs

of all
Leading
Stations

Features For Sunday

Beginning a new series of broadcasts of the Salt Lake City Tabernacle Choir at 10 a. m. over KMOX.

* * *

"Eyes of the World" new drama series arranged by Don Hunt, at 1:30 p. m. on KMOX.

* * * * *

Musical Memories program at 3:30 p. m. on WIL with Allen Wills, soloist.

* * * * *

Genia Fonariova will sing "Tant Que Le Jour" during the Road to Romany Gypsy



program heard over KWK at 4 p. m. today.

* * *

David Lawrence, news commentator, at 7 p. m. on KSD.

* * *

Spanish singers and players on KSD at 7:45 p. m.

7:45 p. m.

* * * * *

Al Roth and his Gloom Chasers are heard over WIL at 8 p. m.

* * * * *

Three Keys, new negro novelty group heard at 8:45 on KWK.

We Recommend These

Departing from his recent practice of offering a medley of musical pieces as overture, Rubinoff places a special orchestration of the Russian folk-song, "Dark Eyes," in the lead-off position of the Chase and Sanborn hour Sunday, at 6 p. m. over KMOX.

Harry Richman, when not conducting his radio school on the program, will have four songs—"If You Were Only Mine," "It Was So Beautiful," "Hold Up Your Hands" and "It Took Just a Moment to Fall in Love."

FROM "HORSEFEATHERS"

"Everyone Says I Love You." from the Marx Brothers' new photoplay, "Horsefeathers," figures prominently on Leo Reisman's schedule of tunes for the Pond's program at 7:30 p. m. Friday over KSD.

"Get Cannibal" will be played in Leo's warmest vein, and in contrasting mood. "We Were Only Walking in the Moonlight," a waltz. "Songs For Sale" Leo describes as the sad cry of the music publishers.

As on recent Reisman broadcasts, several vocalists will assist in the choruses of such songs as "Soy de Ebro," a paso doble.

"ROLY, BOLY EYES"

Eddie Leonard, famous old-time minstrel, singing his equally fa-

mous "Roly, Boly Eyes," will be the subject of Georgie Price's impersonation on the Chase and Sanborn tea program Tuesday at 5:45 p. m. over KMOX. Bennie Krueger and his orchestra provide the instrumental part of the broadcast.

CHAMLEE'S PROGRAM

Mario Chamlee, one of the greatest singers ever developed in America, comes to the microphone for a series of guest appearances on the Nestle "Chocolateers" program, with Leonard Joy and his orchestra, beginning with the broadcast of Friday, September 9, at 6 p. m. over KWK.

Chamlee will sing a group of three songs on his broadcasts. On the first he will offer "Only a Rose" from "The Vagabond King," "Without a Song" and "When Irish Eyes Are Smiling."

RUTH ETTING

Ruth Etting on her Wednesday program will sing: "If I were Only Sure of You," "The Voice in the Old Village Choir" and a surprise selection from her album of glorified songs. Nat Shilkret will conduct special orchestrations of "Birth of the Blues" and "So Ashamed." The program is heard at 7 p. m. on KMOX.

— P. M. —

4:00—KWK Paul Whiteman's Rhythmic Concert, NBC.

4:00—WIL Radio Artists on Parade (R)
4:00—WEW The Inter-Racial Hour—Sponsored by the Chronicle, official organ of the Federated Colored Catholics of the United States, Edited by Wm. M. Markoe, S. J. Speaker—Frank L. Williams, on "Brotherhood," Music by the Dana Octet, directed by Clarence Hayden Wilson.

4:15—WIL Song of the Strings; Studio orchestra.

4:30—KMOX "Roses and Drums"—Dramatic Sketch—Rose Hobart, Star of Stage and Screen in Leading Role, CBS.

4:30—KSD "Sweetheart Days."

4:30—WIL Hot Timers.

4:30—WEW Trio School of Music.

4:45—WIL Twilight Sketches.

5:00—KMOX The Four Eton Boys.

5:00—KSD Baseball Scores.

5:00—KWK Pickens Sisters, NBC.

5:00—WIL Lights and Shadows.

5:00—WEW Musicale directed by John Boland.

5:05—KSD Tenor with Orchestra.

5:15—KMOX Bas-ball Scores.

5:15—KWK Interview with Elwood Vines, Tennis Champion.

5:15—WEW Records.

5:20—KMOX Organ Hour.

5:30—KSD Orchestral Gems.

5:30—KWK The Commodores, NBC.

5:30—WIL Vesper Hour.

5:30—WEW Van Koenig and His Counts (Dance Music.)

5:45—KMOX Theo. Karle, Tenor with Howard Barlow's Orchestra, CBS.

6:00—KMOX Columbia Dramatic Laboratory, CBS.

6:00—KSD Rubinoff's Orchestra.

6:00—KWK McCrary Brothers, NBC.

6:15—KWK New York Orchestra, NBC.

6:30—KMOX Wm. Vincent Hall, Baritone and Do Re Mi, Girl Trio.

7:00—KMOX Roxy Theatre Symphony.

7:00—KSD David Lawrence.

7:00—KWK Ralph Kirley, Baritone.

7:15—KSD Album of Familiar Music.

7:30—KMOX Harry Sosnik, Pianist and His Band with Male Quartet in Parade of Melodies; Featuring Harriet Cruise, Soloist, CBS.

7:45—KSD Spanish Singers and Players.

8:00—KMOX The Gauchos; Featuring Tito Guizar, CBS.

8:00—KSD Musings.

8:00—WIL Al Roth and Gloom Chasers Ambassador Theatre.

8:15—KSD L'Heure Exquise.

8:15—KWK The Old Singing Master.

8:30—KMOX Ernest Hutchenon, Pianist with Concert Orchestra, CBS.

8:30—WIL Afro-American Minstrel.

8:45—KSD Sunday at Seth Parkers'

8:45—KWK "Three Keys," NBC.

8:45—WIL Allen Wills; Songs As You Like Them.

9:00—KMOX Ann Leaf and Ben Alley, Tenor, CBS.

9:00—KWK Malik Mystery Drama.

9:00—WIL Jackson-Marable Harlem Syncopators, Sauter's Park.

9:15—KSD Official Weather Forecast.

9:15—KFUO Devotional Hour.

9:30—KMOX The Holman Sisters — Piano Duo.

9:30—KWK Rhyme and Rhythm, NBC

9:30—WIL Master's Music Room, (T)

9:45—KMOX "Today's Highlights" — Harlan Eugene Read

9:45—WIL Dream Boat — Franklyn MacCormack.

10:00—KMOX Baseball Scores.

10:00—WIL Anson Weeks Orchestra (T)

10:05—KMOX Musical Weather Report.

10:10—KMOX Gus Arnheim's Orchestra, CBS.

10:15—WIL Ray DeVinney's Orchestra, Diane's Club.

10:30—KMOX California Melodies; Guest Stars and Raymond Paige's Orch, CBS.

10:45—KWK William Stoess Orch, NBC

11:00—KMOX Around the Town, Featuring Famous Orchestras, CBS.

Radio Programs For Monday, September 5

— A. M. —

6:30—KMOX Farm Folks Hour; Featuring Texas Tacky, and Farm Information.
 6:30—KWK Sunbirds. NBC.
 6:30—KFUO Morning Family Worship.
 6:45—KWK John Fogarty. NBC.
 7:00—KMOX The Early Morning Time Signals from the Band Wagon.
 7:00—KSD Gene and Glenn.
 7:00—KWK Waltzes. NBC.
 7:00—WIL Breakfast Club Express—Popular Program.
 7:00—WEW Records.
 7:15—KSD Top of the Morning.
 7:15—KWK Lady Bugs. NBC.
 7:30—KSD Flying Fingers.
 7:30—KWK Vic and Sade. NBC.
 7:30—WEW The Day's Dedication.
 7:50—KSD Pieplant Pete.
 8:00—KMOX Public Interest Period.
 8:00—KSD "Jack and Jill."
 8:00—WIL Birthday Bells; Children's Program.
 8:00—WEW Records.
 8:15—KMOX Catherine MacKenzie — Entertains.
 8:15—KSD Breen and De Rose.
 8:15—KWK Clara. Lu 'n' Em. NBC.
 8:30—KMOX Madison Singers. CBS.
 8:30—KSD Sonata.
 8:30—KWK Our Daily Food. NBC.
 8:30—WIL Cecil and Sally. (T)
 8:45—KMOX Morning Moods; Orchestra. CBS.
 8:45—WIL Bill and Bud; Guitarists.
 9:00—KMOX Fred Berrens and His Orchestra. CBS.
 9:00—KSD Melody Three.
 9:00—WIL Sunshine Serenaders; Studio Orchestra.
 9:00—WEW Opening Markets.
 9:10—WEW Aunt Sammy's Housekeepers' Chat.
 9:15—KSD Household Institute.
 9:15—KWK Organ Melodies. NBC.
 9:15—WIL Morning Organ Melodies with Allen Clarke, Baritone.
 9:30—KSD U. S. Navy Band.
 9:30—KWK "Singing Strings."
 9:20—WEW Records.
 9:45—KMOX Ben Alley, Tenor. CBS.
 9:45—WIL Uncle Ben's Lone Star Rangers.
 10:00—KMOX Women's Radio Hour—Featuring Lucille Dorman; Sunny Joe; Henry, Zeb and Otto; and Margo.
 10:00—KSD Johnny Marvin, Tenor.
 10:00—KWK Men of Song. NBC.
 10:00—WEW Weather Report; Opening Grain Market.
 10:10—WEW Public School Playground News.
 10:15—KSD On Wings of Song.
 10:15—WIL Song of the Strings — Studio Orchestra.
 10:15—WEW Parent's Forum.
 10:30—KMOX Nugent's Musical News; Sally Walker and Grace McGowan.
 10:30—KWK Words and Music. NBC.
 10:30—WIL Carlos Molina's Orch. (T)
 10:30—WEW Records.
 10:45—KMOX News Flashes from The St. Louis Star & Times.
 10:45—WIL Paul Whiteman's Orch. (T)
 10:55—KMOX Organ Interlude.
 11:00—KMOX Missouri Women's Federation Program.
 11:00—KSD Vacation Wanderings.
 11:00—KWK Harold Stokes Orch. NBC.
 11:15—KMOX Mart Building Program.
 11:15—WIL Master's Music Room. (T)
 11:30—KMOX Madison String Ensemble. CBS.
 11:30—KWK National Farm and Home Hour. NBC.
 11:30—WIL Red Nichols and His Five Pennies. (R)
 11:45—KSD Snyder's Orchestra.
 11:45—WIL Organ Melodies; Organist.
 12:00—KMOX Farm Service Hour — Henry, Zeb and Otto and Organ Melodies; Sunny Joe.
 12:00—KSD Health Talk.
 12:00—WIL Noonday Musical — Dick Malloy, Vocalist.
 12:00—WEW Farm Reporter's Program —Live Stock Exchange.

— P. M. —

12:15—KFUO Noonday Religious Address.
 12:30—WIL Ray and Bob; Guitarists.
 12:45—WIL Hot Timers.
 1:00—KMOX News Flashes from The St. Louis Star & Times.
 1:00—KSD "The Revolving Stage."
 1:00—WIL Melody Revue — Reinert's Orchestra.
 1:00—WEW To be announced.
 1:10—KMOX Home Radio Hour; Featuring Lullaby Lady.
 1:30—KMOX The Captivators. CBS.
 1:30—KSD "Woman's Review."

— P. M. —

1:30—KWK Rhythmic Serenade. NBC.
 1:30—WIL Stars of Songland. (T)
 1:45—KMOX The Four Eton Boys.
 1:45—WIL Voice of the Vibraphone—Schuyler Alward and Jerry Cammack.
 2:00—KMOX Frank Westphal's Dance Orchestra. CBS.
 2:00—KSD Pop Concert.
 2:00—WIL Police Releases.
 2:15—KWK Orchestra. NBC.
 2:15—WIL Eddie Lake; Banjo Melodies
 2:30—KMOX Columbia Artists Recital.
 2:30—KSD Soloist.
 2:30—WIL Afternoon Frolics.
 2:30—WEW Popular Piano Numbers; Joe "Buddy" duddy.
 2:45—KMOX Summary of Men's Singles in National Tennis Tournament.
 2:45—KSD "Lady Next Door."
 3:00—KMOX Romance. CBS.
 3:00—KSD Soloist.
 3:00—WIL Musical Gems; Organist.
 3:00—WEW Closing Markets.
 3:15—KSD Paul Whiteman's Orch.
 3:30—KMOX Ernest Hares' Organ Recital.
 3:30—KSD Piano Duo.
 3:30—WIL Afro-American Minstrel.
 3:45—KMOX The Levee Man—Songs of the Southland.

Selections For Today

Johnny Marvin, NBC tenor, heard at 10 a. m. over KSD.

The Levee Man in songs of the Southland, new program over KMOX at 3:45 p. m.

Donald Novis of the golden voice on KSD at 4:45 p. m.

Hope Barham's Piano Capers are heard on WIL at 5:15 p. m.

Billy Jones and Ernie Hare and their foolishness at 5:45 p. m. on KWK.

3:45—KSD Circle Program.
 3:45—WIL Indra Lemoyne, Soprano.
 4:00—KMOX Happy Time with Irene Beasley. CBS.
 4:00—KSD Dinner Music.
 4:00—WIL Lights and Shadows; Studio Orchestra.
 4:15—KMOX Reis and Dunn. CBS.
 4:15—WIL Radio Band-Its.
 4:30—KMOX The Holman Sisters.
 4:30—KSD "Drifting and Dreaming."
 4:30—WIL Venetian Trio.
 4:45—KMOX Lone Wolf Tribe. CBS.
 4:45—KSD Donald Novis.
 4:45—KWK Baseball Scores.
 4:45—WIL Pirates Club — Children's Program.
 5:00—KMOX News Flashes from The St. Louis Star & Times.
 5:00—KSD Baseball Scores.
 5:00—KWK The Singing Lady. NBC.
 5:00—WIL Harlem Rhythm. (T)
 5:05—KSD Harriet Lee's Orchestra.
 5:10—KMOX Sports Reporter.
 5:15—KMOX Miniature Revue with Lucille Dorman, the Brown-Eyed Blues Singer; Margo, Piano; and Sunny Joe, Banjo.
 5:15—KSD Talk.
 5:15—WIL Wurlitzer. Piano Capers — Hope Barham.
 5:30—KMOX "Skippy." (T)
 5:30—KSD Concert Ensemble.
 5:30—KWK The Stebbins Boys. NBC.
 5:30—WIL Bobby Stubbs and His Music.
 5:45—KMOX Tito Guizar, Tenor. CBS.
 5:45—KSD The Goldbergs.
 5:45—KWK Billy Jones and Ernie Hare
 5:45—WIL Jimmy Greer's Orch. (T)
 6:00—KMOX Henry, Zeb and Otto.
 6:00—KSD String Quartet.
 6:00—KWK Gene King, Narrator with Harold Stokes Orchestra. NBC.
 6:00—WIL "Inquiring Reporter."
 6:05—WIL Organ Melodies.
 6:15—KMOX Singin' Sam. CBS.
 6:15—WIL Dinner Dance Music — Bigalite Electric Co.
 6:30—KMOX Kate Smith and Her Swane Music. CBS.
 6:30—KSD The Revelers.
 6:30—KWK Labor Day Concert. NBC.
 6:30—WIL George L. Weber's Sparkler's Orchestra. Studio Orchestra.
 6:45—KMOX Jay C. Flippencies. CBS
 6:45—WIL Civic Service Period; Mr. Fixit.

— P. M. —

7:00—KSD Gypsies' Orchestra.
 7:00—KWK Weiner Minstrels. NBC.
 7:00—WIL Radio's Six Stars. Biederman Furniture Co.
 7:15—KMOX The Mills Brothers. CBS
 7:15—WIL Afro-American Minstrel.
 7:30—KMOX Musical Album of Popular Classics. CBS.
 7:30—KSD The Parade of the States.
 7:30—KWK Jack Benny; George Olsens' Music with Ethel Shutta, Soloist. NBC.
 7:30—WIL Alma Rotter; Songs.
 7:45—WIL Jack Dunn's Orch. (T)
 8:00—KMOX The Boswell Sisters and Shilkret's Orchestra. CBS.
 8:00—KSD National Radio Forum.
 8:00—KWK The Country Doctor; Featuring Phillips H. Lord. NBC.
 8:00—WIL Barn Dance Music — Uncle Ben's Lone Star Rangers.
 8:15—KMOX "Unsung Heroes" — Dramatic Series. CBS.
 8:15—KWK Whispering Jack Smith and the Humming Birds. NBC.
 8:30—KMOX Guy Lombardo and His Royal Canadians. CBS.
 8:30—KSD Dance Miniature.
 8:35—WIL Sport Review; Neil Norman
 8:45—KMOX Myrt and Marge. CBS.

NEW PROGRAMS ON NBC'S SCHEDULE

(Continued from Page 3)

New programs scheduled for the early fall months include the following premiers:

The Quaker Early Birds—Gene and Glen—old favorites have returned to the air under their former sponsors, the Quaker Oats Company. Songs and patter. Daily except Sunday, at 6 a. m.

Wheatenaville—a new five-a-week dramatic program featuring Raymond Knight as the editor of a small town newspaper, every day except Friday and Saturday at 5:15 p. m.

Ben Bernie, the Old Maestro, who will bring his orchestra to the network each Tuesday night at 7 p. m. under the sponsorship of the Premier Malt Sales Company.

The Sweetheart program, bringing songs and beauty talks each Wednesday, beginning September 14, at 9:45 a. m. This program, once a morning favorite has not been heard for a long time.

The Big Ben Dramas, sponsored by the Western Clock Company, will be back on the air each Sunday afternoon at 3:30.

Dromedary Caravan, a series of dramatic programs, dealing with desert life and sponsored by the Hill Brothers Company, will be presented each Monday, Wednesday and Friday at 4:15 p. m.

Wayne King and his Lady Esther Orchestra, already heard in the series of Sunday programs will inaugurate a second series for the same sponsor, the Lady Esther Company, over a similar network on Tuesday nights. This series will start Tuesday, October 4, at 7:30 p. m.

The Three Bakers, purveyors of song and comedy, will again be heard each Sunday evening at 6:30 p. m., beginning Sunday, October 2, under the sponsorship of Standard Brands, Inc.

Seketary Hawkins is the title of a new dramatic script which the Ralston Purina Company will present for the first time on Tuesday, October 4, at 4:45 p. m. These programs will be heard each Tuesday, Thursday and Saturday.

Another old favorite, The Mystery Chef, will broadcast his food talks once more for the R. B. Davis & Company, beginning Tuesday, October 4, He will be heard each Tuesday and Thursday at 9 a. m.

Captain Diamond, a dramatic script, will be offered by General Foods, in behalf of Diamond Crystal Salt, Wednesday evening at 7 p. m., starting October 5.

Pacific Coast Borax Company will return its famous Death Valley Days sketches each Thursday evening at 8 p. m., on Thursday, October 6.

WATCH WEW

Starting September 1st, WEW will go on the air much more often during the day. They have planned quite a few new features that are sure to meet with the approval of the most exacting listener. Watch Radio and Entertainment for items of interest from WEW which will appear from time to time.

Radio Programs For Tuesday, September 6

— A. M. —

- 6:30—KMOX Farm Folks Hour; Farm Information; Texas Tackly.
- 6:30—KWK Sunbirds, NBC.
- 6:30—KFUO Morning Family Worship
- 6:45—KWK John Fogarty, NBC.
- 7:00—KMOX Early Morning Time Signals from the Band Wagon.
- 7:00—KSD Gene and Glenn.
- 7:00—WIL Breakfast Club Express—Popular Program.
- 7:00—WEW Records.
- 7:15—KSD Top of the Morning.
- 7:15—KWK Lady Bugs, NBC.
- 7:30—KSD Jack and Jill.
- 7:30—WEW The Day's Dedication.
- 7:45—KMOX Brad and Al, CBS.
- 7:50—KSD Pieplant Pete.
- 8:00—KMOX Public Interest Period.
- 8:00—WIL Birthday Bells; Children's Program.
- 8:00—WEW Records.
- 8:15—KMOX Morning Moods, CBS.
- 8:15—KSD Souvenirs of Melody.
- 8:15—KWK Clara, Lu 'n' Em, NBC.
- 8:30—KMOX Helen Board, Soprano.
- 8:30—KSD "Three Orphans."
- 8:30—KWK Our Daily Food, NBC.
- 8:30—WIL Cecil and Sally, (T)
- 8:45—KMOX U. S. Navy Band Concert, CBS.
- 8:45—KSD Breen and De Rose.
- 8:45—KWK Irma Glenn, NBC.
- 8:45—WIL Bill and Bud; Guitarists.
- 9:00—KSD "Your Child."
- 9:00—WIL Sunshine Serenaders; Studio Orchestra.
- 9:00—WEW Opening Markets.
- 9:10—WEW Aunt Sammy's Housekeepers' Chat.
- 9:15—KMOX Today's Pioneers — Mme Schumann-Heink; Ida Bailey Allen, CBS
- 9:15—KSD Household Institute.
- 9:15—KWK Soloists, NBC.
- 9:15—WIL Morning Organ Melodies with Allen Clarke, Baritone.
- 9:30—KMOX The Round Towners Quartet, CBS.
- 9:30—KSD Army Band Concert.
- 9:30—KWK Through the Looking Glass, NBC.
- 9:45—KMOX Vincent Sorey, CBS.
- 9:45—KWK Rhythm Ramblers, NBC.
- 10:00—KMOX Women's Radio Hour — Featuring Staff Artists.
- 10:00—KSD Johnny Marvin, Tenor.
- 10:00—KWK Men of Song, NBC.
- 10:00—WEW Weather Report; Opening Grain Market.
- 10:10—WEW Public School Playground News.
- 10:15—KSD On Wings of Song.
- 10:15—KWK Pat Barnes, NBC.
- 10:15—WEW Song Recital; Miss Agnes Vogler.
- 10:30—KMOX Nugent's Musical News — Henry, Zeb and Otto.
- 10:30—KWK Words and Music, NBC.
- 10:30—WEW Records.
- 10:45—KMOX News Flashes from The St. Louis Star & Times.
- 10:55—KMOX Organ Interlude.
- 11:00—KMOX St. Louis Medical Society
- 11:00—KSD Classic Varieties.
- 11:00—KWK Harold Stokes Orch, NBC.
- 11:00—WEW Al Haley and His Orch.
- 11:15—KMOX Geo. Hall's Orch, CBS.
- 11:15—KWK "Happy" Jack Turner in Songs, NBC.
- 11:15—WIL Tune in period.
- 11:30—KMOX Atlantic City Musicale.
- 11:30—KSD Luncheon Music.
- 11:30—KWK National Farm and Home Hour, NBC.
- 11:30—WIL Neighborhood Hour Announcements.
- 11:45—WIL Organ Melodies; Organist.
- 12:00—KMOX Farm Service Hour — Henry, Zeb and Otto.
- 12:00—KSD The Merry Madcaps.
- 12:00—WIL Noonday Musical — Dick Malloy, Vocalist.
- 12:00—WEW Report of St. Louis Live Stock Exchange.

— P. M. —

- 12:15—KMOX "Sweethearts of the Air" —Helen Nugent and Ben Alley, CBS.
- 12:15—KFUO Noonday Religious Address.
- 12:30—KMOX (Continued) Farm Service Hour.
- 12:30—WIL Ray and Bob; Guitarists.
- 12:45—WIL Hot Timers.
- 1:00—KMOX News Flashes from The St. Louis Star & Times.
- 1:00—KSD Vocal Art Quartet.
- 1:00—WIL Melody Revue — Reinert's Orchestra.
- 1:10—KMOX Home Radio Hour; The Levee Man and Two Guitars.
- 1:15—KWK Radio Troubadors, NBC.
- 1:30—KMOX Aeolian Piano Recital.

— P. M. —

- 1:30—KSD Women's Review.
- 1:30—KWK Blaufuss Ensemble, NBC.
- 1:30—WIL Organalities; Piano and Organ.
- 1:45—KMOX Snapshots, CBS.
- 1:45—KWK Mormon Tabernacle Choir, NBC.
- 1:45—WIL Bert Sexton; Dixie Melody Man.
- 2:00—KMOX Boston Popular Revue.
- 2:00—KSD "Slow River."
- 2:00—WIL Police Releases.
- 2:15—WIL Carlos Molina's Orchestra.
- 2:30—KMOX Down Melody Lane — Ernest Hares, Organist.
- 2:30—KSD Tea Dansante.
- 2:30—WIL Afternoon Frolic.
- 2:45—KSD The Lady Next Door.
- 2:55—KMOX Baseball — Cleveland vs. St. Louis Browns at St. Louis.
- 3:00—KSD Garden Melodies.
- 3:00—WIL Musical Gems; Organist.
- 3:00—WEW Closing Markets.
- 3:15—WIL Beulah Ambach; Radio Blue Belle.
- 3:15—WEW Violin Solos; Mr. John Boland.
- 3:30—WIL Afro-American Minstrel.
- 3:45—KSD Circle Program.

— P. M. —

- 7:00—KSD National Civic Artists.
- 7:00—KWK Alice Mock, Soprano and Male Trio, NBC.
- 7:00—WIL Radio's Six Stars, Hederman Furniture Co.
- 7:15—KMOX Threads of Happiness—New, CBS.
- 7:15—WIL Afro-American Minstrel.
- 7:30—KMOX Crime Club — Mystery Dramatization; Opening Episode of "The Green Toad," CBS.
- 7:30—KSD Ed Wynn and Don Vorhees' Band.
- 7:30—KWK Friendship Town, NBC.
- 7:30—WIL Allister Wylie; Piano Styl-ist.
- 7:45—WIL Southlanders.
- 8:00—KMOX Manhattan Serenaders.
- 8:00—KSD Dance Orchestra and Drama
- 8:00—KWK The Country Doctor with Phillips H. Lord, NBC.
- 8:00—WIL Al Roth and Gloom Chasers —Ambassador Theatre.
- 8:30—KMOX Isham Jones Orch, CBS.
- 8:30—KWK Red Adams' Sketch of Modern Youth, NBC.

The Listener's Voice

GLAD YOU LIKE IT

Dear Editor:
Enclosed find coupon for the "Tiny-Mike." I would not miss a copy of your book.
Mrs. R. J. McCarthy

ABOUT GARNETT MARKS

Dear Editor:
I would like to know what Garnett Marks is doing. I do not hear him on WIL anymore.
Radio Fan.

Garnett Marks is heard only on the "Katy News Express" program on KMOX. — Ed.

WILL LET YOU KNOW

Editor RAE:
Please let me know if the "Dutchmasters" are soon to be on the air? We are very much pleased with your magazine and would not be without it.
Gertrude Schmidt.

No announcement has been made, but we'll let you know. Ed.

THANK YOU MR. BEEBE

Gentlemen:
I am sending in six votes for Holland Engle in the announcer's popularity contest and I hope he wins.

Your magazine is a dandy and anything you want to know about radio is usually to be found in your magazine. How about stealing a picture of Don Hunt (KMOX) for the magazine sometime soon?

Very truly,
H. L. Beebe.

Don Hunt's picture appears in this issue. —Ed.

WE'RE SORRY TOO

Dear Editor:
I am very sorry that KWK's announcers are not entered in the popular announcer's contest as Del King is our favorite. However, since we cannot vote for him we are changing our votes to Holland E. Engle of KMOX.
Sincerely,
Miss Eleanor Marsden.

AND THEY'RE HAPPY, TOO

To the Answer Man—
How long have Frank Crumit and Julia Sanderson been married?
W. Jerrald.

Eighteen years. —Ed.

THANK YOU TOO

Editor: My son wants one of the Tiny Mikes so please send him one. I am paid up till March 31st, 1933 so extend it for 10 more issues cause we feel like we just couldn't do without it.

—Ruth Take,
Edwardsville Ill.

Selections For Today

Mme. Schuman-Heink will be the subject of Ida Bailey Allen's "Today's Pioneers" program at 9:15 a. m. on KMOX.

"The Inquiring Reporter," organ melodies, at 6 p. m. on WIL.

John Boland will be heard in Violin solos over WEW at 3:15 p. m.

Ed Wynn fire chiefing on KSD at 7:30 p. m.

Ray Perkins, the Barbasolist, at 5:30 p. m. on KSD.

Red Adams, drama of modern youth, at 8:30 p. m. on KWK.

Fray and Braggiotti, Franco-Italian piano team at 6:15 on KMOX.

Franklyn MacCormack's Dream Boat program at 9:45 p. m. on WIL.

- 3:45—WEW Records.
- 4:00—KSD Dinner Music.
- 4:00—WIL Lights and Shadows — Studio Orchestra.
- 4:15—WIL Radio Band-Its.
- 4:30—KSD The Songsters.
- 4:30—WIL Venetian Trio.
- 4:30—WEW Mystic Serenader.
- 4:40—KMOX Baseball Scores.
- 4:45—KMOX News Flashes from the St. Louis Star & Times.
- 4:45—KSD Back of the News in Washington.
- 4:45—WIL Pirates Club — Children's Program.
- 4:45—WEW Buchanan-Bentley Musicale
- 4:55—KMOX Organ Interlude.
- 5:00—KMOX Uncle Billy.
- 5:00—KSD Baseball Scores.
- 5:00—KWK The Singing Lady, NBC.
- 5:00—WIL Harlem Rhythm.
- 5:05—KSD Mid-Week Hymn Sing.
- 5:15—KMOX Miniature Revue.
- 5:15—KSD The Rollickers.
- 5:15—KWK Frankie Masters Orchestra, NBC.
- 5:15—WIL Wurlizer Piano Capers — Hope Barham.
- 5:30—KMOX "Skipper."
- 5:30—KSD Ray Perkins.
- 5:30—KWK The Stebbins Boys, NBC.
- 5:30—WIL Bobby Stubbs and His Music.
- 5:45—KMOX Georgie Price and Benny Kreuger's Orchestra, CBS.
- 5:45—KSD The Goldbergs.
- 5:45—KWK Specialty.
- 5:45—WIL Jimmy Greer's Orchestra.
- 6:00—KMOX Song of the Islands — Royal Hawaiians.
- 6:00—KSD Vocal Soloists and Orchestra.
- 6:00—WIL "Inquiring Reporter."
- 6:05—WIL Organ Melodies.
- 6:15—KMOX Fray and Braggiotti — Franco-Italian Piano Team, CBS.
- 6:15—WIL Dinner Hour Concert.
- 6:30—KMOX Kate Smith and Her Swanee Music.
- 6:30—KSD Walter Smith and His Band
- 6:30—KWK Ramezes, NBC.
- 6:30—WIL George L. Weber's Sparklers.
- 6:45—KMOX Musical Fast Freight.
- 6:45—WIL Civic Service Period; Mr. Fixit.
- 7:00—KMOX "Music that Satisfies"—The Street Singer, CBS.
- 8:35—WIL Sport Review; Neil Norman.
- 8:45—KMOX Myrt and Marge, CBS.
- 8:45—KWK Jane Froman, NBC.
- 8:45—WIL Allen Wills; Songs As You Like Them.
- 9:00—KMOX Howard Barlow and Columbia Symphony Orchestra, CBS.
- 9:00—KSD Official Weather Forecast.
- 9:00—KWK Amos 'n' Andy, NBC.
- 9:00—WIL Jackson-Marable Harlem Syncopators, Sauter's Park.
- 9:05—KSD Dave Dalton and His Orchestra.
- 9:30—KMOX Little Jack Little, CBS.
- 9:30—KSD Jack Denny Orchestra.
- 9:30—WIL Afro-American Minstrel.
- 9:45—KMOX "Today's Highlights" — Harlan Eugene Read.
- 9:45—WIL Dream Boat — Franklyn MacCormack.
- 10:00—KMOX Baseball Scores.
- 10:00—KSD Dream Singer.
- 10:00—WIL Bill Bailey's Orchestra.
- 10:05—KMOX Musical Weather Report —Official Weather Forecast and State Music.
- 10:05—KSD Whiteman's Orchestra.
- 10:10—KMOX Public Incorporated.
- 10:15—KMOX Rudy Baie; Popular Bal-ladeur.
- 10:15—WIL Ray DeVinney's Orchestra, Diane's Club.
- 10:30—KMOX Al Lyons and His Meadowbrook Club Orchestra.
- 10:30—KSD Dance Music.
- 10:30—KWK Charlie Agnew's Orchestra, NBC.
- 10:45—KMOX Sport Squibs by France Laux.
- 11:00—KMOX "Around Chicago Town" —with Famous Orchestras, CBS.
- 11:00—WIL Studio Feature.
- 11:00—KFUO Truth Hour.
- 11:15—WIL Dance Orchestra.
- 11:30—WIL Jackson-Marable Harlem Syncopators, Sauter's Park.
- 11:30—KFUO Man's Questions and God's Answers.
- 11:45—KWK Terrace Gardens Orchestra, NBC.
- 12:00—KMOX Al Lyons and His Meadowbrook Club Orchestra.
- 12:15—KMOX Voice at Midnight.

Radio Programs For Wednesday, September 7

— A. M. —

6:30—KMOX Farm Folks Hour; Farm Information and Texas Tacky.
6:30—KWK Sunbirds, NBC.
6:30—KFUO Morning Family Worship.
6:45—KWK John Fogarty, NBC.
7:00—KMOX Early Morning Band Wagon and Time Signals.
7:00—KSD Gene and Glenn.
7:00—KWK Waltzes, NBC.
7:00—WIL Breakfast Club Express— Popular Program.
7:00—WEW Records.
7:15—KSD Top of the Morning.
7:15—KWK Lady Bugs, NBC.
7:30—KSD Flying Fingers.
7:30—WEW The Day's Dedication.
7:50—KSD Picplant Pete.
8:00—KMOX Public Interest Period— with Time Signals.
8:00—KSD "The Happy Family."
8:00—KWK Nothing But the Truth.
8:00—WIL Birthday Bells; Children's Program.
8:00—WEW Records.
8:15—KMOX Catherine MacKenzie Entertains, CBS.
8:15—KSD Food Talk.
8:15—KWK Clara, Lu 'n' Em, NBC.
8:30—KMOX Melody Parade; Vincent Sorey's Orchestra, CBS.
8:30—KSD Soloist.
8:30—KWK Our Daily Food, NBC.
8:30—WIL Cecil and Sally, (T)
8:45—KMOX Four Clubmen — Male Quartet, CBS.
8:45—KSD Betty Crocker.
8:45—KWK Irma Glenn, NBC.
8:45—WIL Bill and Bud; Guitarists.
9:00—KMOX Morning Moods, CBS.
9:00—KSD Breen and DeRose.
9:00—WIL Sunshine Serenader's Orchestra—Popular Tunes.
9:00—WEW Opening Markets.
9:10—WEW Aunt Sammy's Housekeepers' Chat.
9:15—KSD Household Institute.
9:15—KWK Singing Strings, NBC.
9:15—WIL Morning Organ Melodies, with Allen Clarke, Baritone.
9:20—WEW Records.
9:30—KMOX Rhythm Kings, CBS.
9:30—KSD Army Band Concert.
9:30—KWK Rhythm Ramblers, NBC.
9:45—KMOX Ben Alley, Tenor, CBS.
9:45—WIL Uncle Ben's Lone Star Rangers.
10:00—KMOX Women's Radio Hour — Featuring Lucille Dorman; Sunny Joe; Margo; and Henry, Zeb and Otto.
10:00—KSD Johnny Marvin, Tenor.
10:00—KWK Food Talk, NBC.
10:00—WEW Weather Report; Opening Grain Market.
10:10—WEW Public School Playground News.
10:15—KSD On Wings of Song.
10:15—KWK Pat Barnes.
10:15—WIL Studio Orchestra; Song of the Strings.
10:15—WEW Movie Bulletin.
10:30—KMOX Nugent's Musical News; Featuring Grace McGowan, Soprano.
10:30—WIL Carlos Molina's Orch. (T)
10:45—KMOX News Flashes from The St. Louis Star & Times.
10:45—WIL Leo Reisman's Orch. (R)
10:50—KWK Words and Music, NBC.
10:55—KMOX Organ Interlude.
11:00—KMOX St. Louis Dental Society.
11:00—KSD Vacation Wanderings.
11:00—KWK Harold Stokes Orch. NBC.
11:15—KMOX Mart Building Program.
11:15—WIL Bing Crosby, (R)
11:30—KMOX Madison String Ensemble, CBS.
11:30—KSD Prince's Orchestra.
11:30—KWK National Farm and Home Hour, NBC.
11:30—WIL Master's Music Room. (T)
11:45—KSD Child Study.
11:45—WIL Organist; Organ Melodies.
12:00—KMOX Farm Service Hour — Henry, Zeb and Otto; and Sunny Joe.
12:00—WIL Noonday Musical — Dick Malloy, Vocalist.
12:00—WEW Report of St. Louis Live Stock Exchange.

— P. M. —

12:15—KFUO Noonday Religious Address.
12:30—WIL Ray and Bob; Guitarists.
12:45—WIL Hot Timers.
1:00—KMOX News Flashes from the St. Louis Star & Times.
1:00—KSD Salon Concert Ensemble.
1:00—KWK Radio Troubadors, NBC.
1:00—WIL Melody Revue.
1:10—KMOX Home Radio Hour; Featuring Lullaby Lady.
1:20—KMOX Down Melody Lane.
1:30—KMOX Baseball; St. Louis Cardinals and Philadelphia (ticker game.)
1:30—KSD Women's Review.

— P. M. —

1:30—KWK Rhythmic Serenade, NBC.
1:30—WIL Prof. Healthy's Class.
1:45—WIL Voice of the Vibraphone— Jerry Cammack and Schuyler Alward.
2:00—KSD Song Souvenirs.
2:00—WIL Police Releases.
2:15—KWK Midweek Musicals, NBC.
2:15—WIL Eddie Lake; Banjo Melodies
2:30—KSD Tea Dansante.
2:30—WIL Afternoon Frolic.
2:45—KSD Lady Next Door.
3:00—KSD Young Artists Trio.
3:00—WIL Musical Gems, Organist.
3:00—WEW Closing Markets.
3:10—WEW Bud Waples.
3:15—KSD Swanee Serenaders.

3:15—WIL Yanner Alexander — "For the Feminine Ear."

3:30—KSD Beau Balladeer.
3:30—WIL Afro-American Minstrel.
3:40—KMOX Baseball Scores.
3:30—WEW Records.
3:45—KMOX News Flashes from the St. Louis Star & Times.
3:45—KSD Circle Program.
3:45—WIL Indra Lemoyne, Soprano.
3:45—WEW Records.
3:55—KMOX Organ Interlude.

Selections For Today
Allen Clarke is heard with the Morning Organ Melodies program at 9:15 a. m. on WIL.
The Jack Frost quartet will sing "The Old Refrain" with orchestra at 6:30 p. m. on KWK.
Ethel Schutta is heard with Jack Benny and George Olsen at 7:30 p.m. on KWK.
From 6:15 to 8:15 p. m. KMOX programs will include Singing Sam; Kate Smith; Guy Lombardo and Ruth Etting.
Ray Devinney's orchestra from Diane's at 10:15 p. m. when the Old Nightwatchman makes his rounds from WIL.

— P. M. —

Oliver Smith, tenor; Violin Obligato, Michel Rosenker
I Might Be Your Once In A While - Herbert
Piano solo, William Roza
Three's a Crowd - - - - - Warren
Orchestra
Waltz (Count of Luxembourg) - Lehar
Kathryn Palmer, Vernon Jacobsen
Selections—Apple Blossom - - - Kreisler
Quartet and Orchestra
6:30—WIL George L. Weber's Sparklers.
6:45—KMOX Musical Fast Freight.
6:45—WIL Civic Service Period, Mr. Fixit.
7:00—KMOX Guy Lombardo and His Royal Canadians, CBS.
7:00—KSD Orchestra with Guest Artist
7:00—KWK Island Boat Club, NBC.
7:00—WIL Radio's Six Stars, Biederman Furniture Co.
7:15—WIL Afro-American Minstrel.
7:30—KMOX Crime Club — Mystery Dramatization; Conclusion "The Green Toad, CBS.
7:30—KSD The Choristers and Orchestra.
7:30—KWK Jack Benny; George Olsen's Music with Ethel Shutta, NBC.

The Answer Man

Q—What color hair has Ford Bond and what is his height?

A—Brown, 6 ft. 2 inches tall.

Q—Who are the Hearthiside Singers?

A—Frank and Jim McCravy.

Q—What is the theme song of Buddy Rogers and his California Cavaliers?

A—"Something in the Night."

Q—Where was Russ Columbo born?

A—San Francisco.

Q—Are all the members of the Revelers Quartet married?

A—Yes.

Q—Has Eunice Howard ever appeared on the legitimate stage?

A—Yes, she played in Christopher Morley's "After Dark."

Q—Who is Jingle Joe?

A—Joseph Parsons.

Q—Who are the names of the directors of the Marine and Navy Bands?

A—Captain William J. Stannard and Lt. Charles Benter.

Q—What is the theme song of the Nothing But the Truth program?

A—Martha's Love Song by Blaufuss.

Q—How old is Johnny Marvin and where was he born?

A—He is 34 and was born in Butler, Oklahoma.

Q—What is the name of the theme song on the Mobiloil Concert?

A—"Road to Romance."

Q—Who is the Old Singing Master?

A—Harry Frankel.

Q—When and where was Rosario Bourdon born and what is his nationality?

A—1885 in Montreal, Canada, of French-Canadian parentage.

Q—On what program do Olsen and Johnson, comedians, appear?

A—Fleischmann Hour on Thursday evenings from 8:00 to 9:00 c'clock.

Q—Where was Virginia Rea born?

A—Louisville, Kentucky.

Q—Is Guy Lombardo married?

A—Yes.

Q—How much are announcers paid?

A—From nothing to \$750 a week.



Eunice Howard



Rosario Bourdon

Radio Programs For Thursday, September 8

— A. M. —

6:30—KMOX Farm Talks Hour; Farm Information and Texas Tacky.
 6:30—KWK Sunbird's, NBC.
 6:30—KFUO Morning Family Worship.
 6:45—KWK John Fogarty, NBC.
 7:00—KMOX Early Morning Band Wagon with Time Signals.
 7:00—KSD Gene and Glenn.
 7:00—KWK Waltzes, NBC.
 7:00—WIL Breakfast Club Express; Popular Program.
 7:00—WEW Records.
 7:15—KSD Top of the Morning.
 7:15—KWK Lady Bugs, NBC.
 7:30—KSD The Upstaters.
 7:30—KWK Vic and Sade, NBC.
 7:30—WEW The Day's Dedication.
 7:45—KMOX Brad and Al, Comedy and Songs.
 7:45—KWK Nothing But the Truth.
 7:50—KSD Pieplant Pete.
 8:00—KMOX Public Interest Period and Time Signals.
 8:00—KSD "The Happy Family."
 8:00—WIL Birthday Bells; Children's Program.
 8:00—WEW Records.
 8:15—KMOX Visiting with Ida Bailey Allen, CBS.
 8:15—KSD "Souvenirs of Melody."
 8:15—KWK Clara, Lu 'n' Em, NBC.
 8:30—KMOX Four Clubmen, CBS.
 8:30—KSD "Three Orphans."
 8:30—KWK Our Daily Food, NBC.
 8:30—WIL Cecil and Sally, (T)
 8:45—KMOX Sunny Joe and Margo.
 8:45—KSD Breen and De Rose.
 8:45—KWK Irma Glen, Organist, NBC
 8:45—WIL Bill and Bud; Guitarists.
 9:00—KMOX U. S. Navy Band Concert, CBS.
 9:00—KSD Soloist.
 9:00—WIL Sunshine Serenader's Orchestra, Studio Orchestra.
 9:00—WEW Opening Markets.
 9:10—WEW Aunt Sammy's Housekeepers' Chat.
 9:15—KSD Household Institute.
 9:15—KWK Singing Strings, NBC.
 9:15—WIL Morning Organ Melodies with Allen Clarke, Baritone.
 9:20—WEW Records.
 9:30—KMOX The Ambassadors; Male Trio, CBS.
 9:30—KWK Rhythm Ramblers, NBC.
 9:30—KSD Marionette.
 9:45—KMOX V. E. Meadows Beauty School of the Air, CBS.
 9:45—KWK Musical Dreams, NBC.
 9:45—WIL Uncle Ben's Lone Star Rangers.
 10:00—KMOX Women's Radio Hour — Featuring Popular Artists.
 10:00—KSD Johnny Marvin, Tenor.
 10:00—KWK Men of Song, NBC.
 10:00—WEW Weather Report; Opening Grain Market.
 10:10—WEW Public School Playground News.
 10:15—KSD On Wings of Song.
 10:15—WIL C. F. Lindsley, Reader, (T)
 10:15—WEW Records.
 10:30—KMOX Nugent's Musical News; Sally Walker with Holman Sisters.
 10:30—KWK Words and Music, NBC.
 10:30—WIL Guy Lombardo's Royal Canadians, (T)
 10:45—KMOX News Flashes from The St. Louis Star & Times.
 10:45—WIL Melody Master's Orchestra.
 10:55—KMOX Organ Interlude.
 11:00—KMOX George Hall's Hotel Taft Orchestra, CBS.
 11:00—KSD Popular Varieties.
 11:00—KWK Harold Stokes Orch. NBC.
 11:00—WEW Records.
 11:30—KMOX Atlantic City Musicale.
 11:30—KWK National Farm and Home Hour, NBC.
 11:45—KSD Luncheon Music.
 12:00—KMOX Farm Service Hour with Organ; Sunny Joe; and Holman Sisters.
 12:00—KSD Salon Singers.
 12:00—WEW Report of St. Louis Live Stock Exchange.

— P. M. —

12:15—KFUO Noonday Religious Address.
 12:30—KWK Synopators, NBC.
 12:30—WIL Neighborhood Announcements.
 12:45—WIL Hot Timers.
 1:00—KMOX News Flashes from The St. Louis Star & Times.
 1:00—KSD Three Mustachios.

— P. M. —

1:00—WIL Melody Revue — Reinert's Orchestra.
 1:00—WEW To be announced.
 1:10—KMCX Home Radio Hour with the Lovee Man.
 1:15—KSD "Famous Loves."
 1:15—KWK Radio Troubadors, NBC.
 1:30—KMOX Frank Westphal's Orchestra, CBS.
 1:30—KSD Women's Review.
 1:30—KWK Blaufuss Ensemble, NBC.
 1:30—WIL Organalities; Piano and Organ.
 1:45—KWK Rhythmic Ensemble, NBC.
 1:45—WIL Stars of Songland.
 2:00—KMOX U. S. Army Band Concert, CBS.
 2:00—KSD Musical Comedy Hits.
 2:00—WIL Police Releases.
 2:15—KWK U. S. Navy Band, NBC.
 2:15—WIL Carlos Molina's Orch. (T)
 2:30—KMOX Down Melody Lane.
 2:30—KSD Tea Dansante.
 2:30—WIL Afternoon Frolic.
 2:45—KSD Lady Next Door.
 2:45—WEW Song Recital.
 2:55—KMOX Baseball Game; Washington Senators vs. St. Louis Browns at St. Louis.

— P. M. —

6:00—KSD Rudy Vallee and Guest Star.
 6:00—WIL "Inquiring Reporter."
 6:05—WIL Organ Melodies.
 6:15—KMOX The Captivators, CBS.
 6:15—KWK The Song Sleuth, NBC.
 6:15—WIL Diner Hour Concert.
 6:30—KMOX "Meyer the Buyer" Comic Sketch, CBS.
 6:30—KWK Rin Tin Tin Thriller, NBC
 6:30—WIL George L. Weber's Sparklers.
 6:45—KMOX Modern Male Chorus, CBS
 6:45—KWK Orchestra, NBC.
 6:45—WIL Civic Service Period, Mr. Fixit.
 7:00—KMOX The Boswell Sisters, CBS
 7:00—KSD Drama "The Orange Lantern."
 7:00—WIL Radio's Six Stars, Biederman Furniture Co.
 7:15—KMOX Mills Bros. Quartet, CBS.
 7:15—WIL Afro-American Minstrel.
 7:30—KMOX Romantic Dramatization; Love Story Hour, CBS.

— P. M. —

8:00—KMOX The Columbians, CBS.
 8:00—KSD Dance Orchestra.
 8:00—KWK The Country Doctor with Phillips H. Lord, NBC.
 8:15—KWK Whispering Jack Smith with The Humming Birds, NBC.
 8:30—KMOX Isham Jones Orch. CBS.
 8:45—KMOX Myrt and Marge, CBS.
 9:00—KMOX Howard Barlow and Orchestra, CBS.
 9:00—KSD Official Weather Forecasts.
 9:00—KWK Amos 'n' Andy, NBC.
 9:01—KSD Paul Whiteman and His Orchestra.
 9:30—KMOX Clay Ballew's Musical Program.
 9:45—KMOX Highlights of the Day—Harlan Eugene Read.
 10:00—KMOX Baseball Scores.
 10:00—KSD Dance Orchestra.
 10:00—WIL Ray DeVinney's Orchestra, Diane's Club.
 10:05—KMOX Musical Weather Reports.
 10:10—KMOX Public Incorporated.
 10:15—KMOX Rudy Baie; Popular Songs
 10:30—KMOX Al Lyons and His Meadowbrook Club Orchestra.
 10:30—KWK Pacific Serenaders, NBC.
 10:30—WIL Peter Van Steeden's Orchestra, (T)
 10:45—KMOX Sportsquibs by France Laux; Dramatization of World Famous Baseball Players.
 11:00—KMOX Around Chicago Town with Famous Orchestra, CBS.
 11:00—KWK Irving Rose's Hotel Statler Orchestra, NBC.
 11:00—WIL Phil Spitalny and His Music, (T)
 11:00—KFUO Near-to-Midnight Gospel Hour.
 11:15—KWK Terrace Gardens Orchestra, NBC.
 11:30—WIL Jackson-Marable Harlem Synopators.
 11:30—KFUO Stories from the Old Testament.
 12:00—KMOX Al Lyons' Meadowbrook Club Orchestra.
 12:15—KMOX The Voice at Midnight.

Selections For Today

Famous Loves are dramatized by Ulita Torgeson, Swedish actress, at 1:15 p. m. on KSD.

Pirates Club, children's feature, offers an unusual program at 4:45 p. m. (WIL.)

Ukulele Ike is heard with Nat Brusiloff's orchestra at 5:15 p. m. on KMOX.

Rudy Vallee with a guest star is heard at 6 p. m. on KSD.

A Rin Tin Tin thriller at 6:30 p. m. on KWK.

Radio's Six Stars including Jackie Archer, Five Vaughn Brothers and Allister Wylie at 7 p. m. on WIL.

Whispering Jack Smith at 8:15 p. m. (KWK.)

Pat Kelly is heard with Al Lyons' Meadowbrook orchestra at 10:30 p. m. and again at midnight over KMOX.

3:00—KSD Ivy Scott.
 3:00—WIL Musical Gems, Organist.
 3:00—WEW Closing Markets.
 3:15—KSD Paul Whiteman's Orch.
 3:15—WIL Beulah Ambach, Radio Blue Belle.
 3:15—WEW Records.
 3:30—WIL Afro-American Minstrel.
 3:45—KSD Circle Program.
 4:00—KSD Diner Music.
 4:00—WIL Lights and Shadows; Studio Orchestra.
 4:00—WEW Eddie Krite and His Orch.
 4:15—WIL Radio Band-its.
 4:30—KSD Parisian Entertainers.
 4:30—WIL Venetian Trio.
 4:40—KMOX Baseball Scores.
 4:45—KMCX News Flashes from the St. Louis Star & Times.
 4:45—KSD The Rollickers.
 4:45—WIL Pirates Club; Children's Program.
 4:55—KMOX Orran Inte-lude.
 5:00—KMCX Uncle Billy.
 5:00—KSD Baseball Scores.
 5:00—KWK The Singing Lady, NBC.
 5:00—WIL Harlem Rhythm.
 5:05—KSD Saxophone Octet.
 5:15—KMOX Cliff Edwards; Ukulele Ike, with Nat Brusiloff's Orchestra, CBS
 5:15—KWK The Vagabonds with Ward Wilson, NBC.
 5:15—WIL Wurlitzer Piano Capers — Hope Barham.
 5:30—KMOX "Skipper."
 5:30—KSD Ray Perkins.
 5:30—KWK The Stebbins Boys, NBC.
 5:30—WIL Bobby Stubbs and His Music.
 5:45—KMOX Georgie Price and Benny Kreuger's Orchestra.
 5:45—KSD The Goldbergs.
 5:45—KWK Specialty Singers.
 5:45—WIL Jimmy Greer's Orch. (T)
 6:00—KMOX Songs of the Islands — Royal Hawaiians.
 6:00—KWK Regimentalists, NBC.

7:30—KSD "America in Revue."
 7:30—KWK Thompkins Corners, NBC.
 7:30—WIL Allister Wylie; Piano Stylist.

Rudy Vallee, Olsen and Johnson Combine on Popular Broadcast



When the Fleischmann program comes on the air Thursday evenings, Rudy Vallee is joined by Olsen (left) and Chic Johnson, masters of nonsense known everywhere to vaudeville and moving picture audiences.

Radio Programs For Friday, September 9

— A. M. —

6:30—KMOX Farm Folks Hour; Farm Information and Texas Tackety.
 6:30—KWK Sunbirds. NBC.
 6:30—KFUO Morning Family Worship.
 6:45—KWK John Fogarty. NBC.
 7:00—KMOX Early Morning Time Signals from the Band Wagon. (R)
 7:00—KSD Gene and Glen.
 7:00—KWK Waltzes. NBC.
 7:00—WIL Breakfast Club Express—Popular Program.
 7:00—WEW Records.
 7:15—KSD Top of the Morning.
 7:15—KWK Lady Bugs. NBC.
 7:30—KSD "Jack and Jill."
 7:30—KWK Vic and Sade. NBC.
 7:30—WEW The Day's Dedication.
 7:50—KSD Pieplant Pete.
 8:00—KMOX Public Interest Period.
 8:00—KSD Three Orphans.
 8:00—KWK Musical Melange. NBC.
 8:00—WIL Birthday Bells; Children's Program.
 8:00—WEW Records.
 8:15—KMOX Frank Crumit and Julia Sanderson. CBS.
 8:15—KSD Breen and De Rose.
 8:15—KWK Clara, Lu 'n' Em. NBC.
 8:30—KSD "Strolling Fiddler."
 8:30—WIL Cecil and Sally. (T)
 8:45—KMOX Melody Parade. CBS.
 8:45—KSD Betty Crocker.
 8:45—KWK Johnny Marvin. NBC.
 8:45—WIL Bill and Bud; Guitarists.
 9:00—KMOX Mazie Piano Twins. CBS.
 9:00—KSD U. S. Marine Band.
 9:00—WIL Sunshine Serenader's Orch.
 9:00—WEW Opening Markets.
 9:10—WEW Aunt Sammy's Housekeepers' Chat.
 9:15—KMOX The Captivators, Orchestra. CBS.
 9:15—KWK Piano Novelties. NBC.
 9:15—WIL Morning Organ Melodies with Allen Clarke, Baritone.
 9:30—KMOX KMOX Song Writer.
 9:30—KWK Singing Strings. NBC.
 9:30—WEW Records.
 9:45—KMOX Ben Alley. CBS.
 10:00—KMOX Women's Radio Hour.
 10:00—KSD Johnny Marvin, Tenor.
 10:00—KWK Men of Song. NBC.
 10:00—WEW Weather Report; Opening Grain Market.
 10:10—WEW Public School Playground News.
 10:15—KSD On Wings of Song.
 10:15—WEW Mary Hendrix.
 10:30—KMOX Nugent's Musical News; Featuring Coyita Bunch, Contralto.
 10:30—KWK Words and Music. NBC.
 10:45—KMOX News Flashes from The St. Louis Star & Times.
 10:55—KMOX Organ Interlude.
 11:00—KMOX George Hall's Hotel Taft Orchestra. CBS.
 11:00—KSD Tom Gerun's Orchestra.
 11:00—KWK Harold Stokes Orch. NBC.
 11:00—WEW Al Haley and His Orch.
 11:15—KMOX Mart Building Program.
 11:15—WIL Announcements.
 11:30—KMOX Atlantic City Musicale.
 11:30—KSD Luncheon Music.
 11:30—KWK National Farm and Home Hour. NBC.
 11:30—WIL Song of the Strings; String Trio.
 11:45—WIL Organ Melodies.
 12:00—KMOX Farm Service Hour — Talk—Organ and Henry, Zeb and Otto; and Sunny Joe.
 12:00—KSD Pianist.
 12:00—WIL Noonday Musical — Dick Mulloy, Vocalist.
 12:00—WEW Report of St. Louis Live Stock Exchange.

— P. M. —

12:15—KFUO Noonday Religious Address.
 12:30—KWK Syncopators. NBC.
 12:30—WIL Ray and Bob, Guitarists.
 12:45—WIL Hot Timers.
 1:00—KMOX News Flashes from The St. Louis Star & Times.
 1:00—KSD Three Shades of Blue.
 1:00—KWK Radio Troubadors. NBC.
 1:00—WIL Melody Revue.
 1:00—WEW To be announced.
 1:10—KMOX Home Radio Hour; Lullaby Lady; Organ and Sunny Joe.
 1:15—KSD "Hobby Riding."
 1:30—KMOX The Grab Bag. CBS.
 1:30—KSD Women's Review.
 1:30—KWK Celebrated Sayings. NBC.
 1:30—WIL Bert Sexton — Piano and Songs.
 1:45—KMOX Columbia Educational Feature. CBS.
 1:45—KWK Rhythmic Serenade. NBC.
 1:45—WIL Voice of the Vibraphone—Schuyler Alward and Perry Cammack.

— P. M. —

2:00—KMOX Columbia Salon Orchestra. CBS.
 2:00—KSD Hill Billies.
 2:00—WIL Police Releases.
 2:15—WIL Adventures of Lord Algy; Drama.
 2:15—KSD Instrumental Soloists.
 2:30—KMOX Down Melody Lane with Henry, Zeb and Otto.

— P. M. —

7:30—KWK Roy Shield's Orchestra with Edna Kellogg. NBC.
 7:30—WIL Alma Rotter — Songs.
 7:45—WIL Jack Dunn's Orchestra.
 8:00—KMOX Street Singer and Orchestra in "Music That Satisfies." CBS.
 8:00—KSD Paul Whiteman's Orch.
 8:00—KWK The Country Doctor with Phillips H. Lord. NBC.

— P. M. —

8:45—KSD Vocal and Instrumental Soloists. As You Like Them.
 9:00—KMOX Columbia Symphony Orchestra. CBS.
 9:00—KSD Official Weather Forecast.
 9:00—KWK Amos 'n' Andy. NBC.
 9:00—WIL Jackson-Marable Harlem Syncopators.
 9:01—KSD Tom Gerun's Orchestra.
 9:15—KSD Tenor with Orchestra.
 9:30—KMOX Piano Recital. Aeolian Hr.
 9:30—WIL Afro-American Minstrel
 9:30—KFUO Bible Study.
 9:45—KMOX Highlights of the Day—Harlan Eugene Read.
 9:45—WIL Dream Boat — Franklyn MacCormack.
 10:00—KMOX Baseball Scores.
 10:00—WIL Guy Lombardo's Royal Canadians. (R)
 10:00—KFUO Radio Calendar.
 10:05—KMOX Musical Weather Report — Official Forecasts.
 10:10—KMOX Public Incorporated.
 10:15—KMOX Holman Sisters.
 10:15—WIL Ray DeVinney's Orchestra. Diane's Club.
 10:30—KMOX Al Lyons' and His Meadowbrook Club Orchestra.
 10:30—KSD Ted Black's Orchestra.
 10:30—WIL Dance Orchestra.
 10:45—KMOX Sport Squibs by France Laux.
 11:00—KMOX Around Chicago Town — Featuring Famous Orchestras. CBS.
 11:00—WIL Red Nichols Orch. (T)
 11:15—WIL Ted Lewis Orchestra. (T)
 11:45—KWK Terrace Gardens Orchestra. NBC.
 11:45—WIL Ray DeVinney's Orchestra. Diane's Club.
 12:00—KMOX Al Lyons' Meadowbrook Club Orchestra.
 12:15—KMOX The Voice at Midnight.

Selections For Today

"Voice of the Vibraphone" with Alma Rotter in Songs over WIL at 7:30 p. m. Schuyler Alward and Jerry Cammack at 1:45 p. m. on WIL.

Henry, Zeb and Otto are featured with the Down Melody Lane program over KMOX at 2:30 p. m. The Country Doctor with Phillips H. Lord at 8 p. m. on KWK.

Countess Albani and her cavaliers mystery drama, on KSD at 8:30 p. m. at 6 p. m. on KSD.

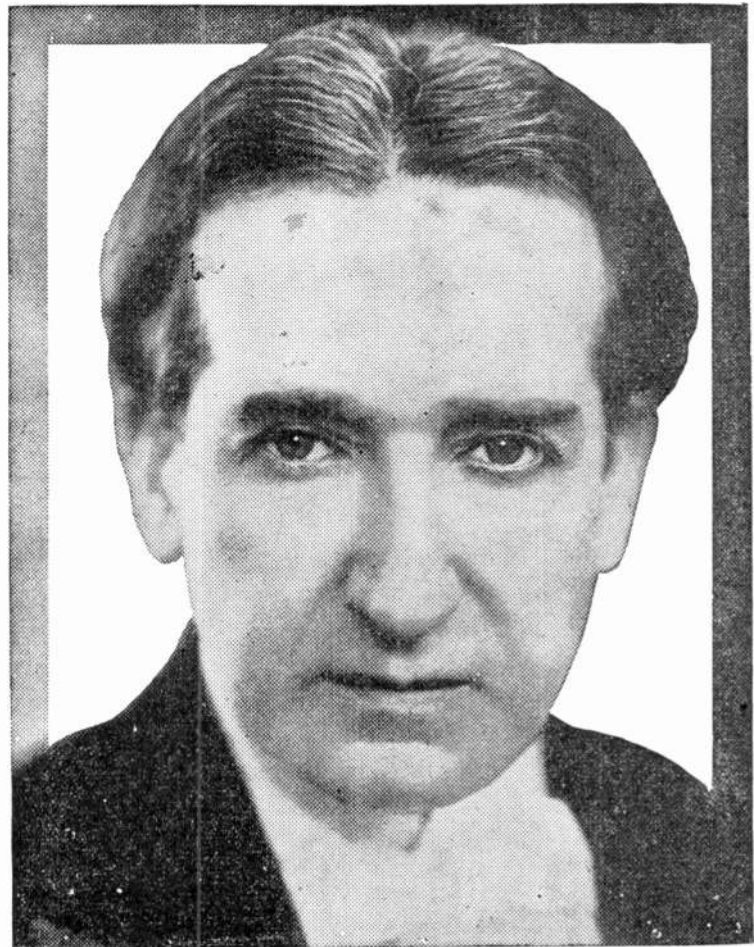
Roy Shields and his orchestra with Edna Kellog at 6:30 p. m. on KWK. Around the Town, featuring Chicago orchestra at 11 p. m. on KMOX.

2:30—KSD Tea Dansante.
 2:30—WIL Afternoon Frolic.
 2:45—KSD Lady Next Door.
 2:55—KMOX Baseball Game; Washington Senators vs. St. Louis Browns at St. Louis.
 3:00—KSD Rice String Quartet.
 3:00—WIL Musical Gems; Organist.
 3:00—WEW Closing Markets.
 3:10—WEW Ko Ha La Conservatory.

3:15—WIL Yanner Alexander — "For the Feminine Ear."

3:30—KSD Echoes of Erin.
 3:30—WIL Afro-American Minstrel.
 3:30—WEW Margaret Schoen.
 3:45—KSD Circle Program.
 3:45—WIL Indra LeMoyné; Soprano.
 3:45—WEW Records.
 4:00—KSD Dinner Music.
 4:00—WIL Lights and Shadows; Studio Orchestra.
 4:15—WIL Radio Band-Its.
 4:30—KSD To be announced.
 4:30—WIL Venetian Trio.
 4:30—WEW Baritone Ballads; Richard Ralls.
 4:40—KMOX Baseball Scores.
 4:45—KMOX Lone Wolf Tribe. CBS.
 4:45—WIL Pirates Club.
 4:45—WEW F. Buchanan—Bentley.
 5:00—KMOX News Flashes from The St. Louis Star & Times.
 5:00—KSD Baseball Scores.
 5:00—KWK The Singing Lady. NBC.
 5:00—WIL Harlem Rhythm.
 5:05—KSD Organ Reverie.
 5:10—KMOX Organ Interlude.
 5:15—KMOX Vaughn de Leath. CBS.
 5:15—KWK The Vagabonds with Ward Wilson. NCC.
 5:15—WIL Wurlitzer Piano Capers—Hope Barham.
 5:30—KMOX "Skippy."
 5:30—KSD Concert Orchestra.
 5:30—KWK The Stebbins Boys. NBC.
 5:30—WIL Bobby Stubbs and His Music.
 5:45—KMOX Connie Boswell. CBS.
 5:45—KSD The Goldbergs.
 5:45—KWK Billy Jones and Ernie Hare
 5:45—WIL Jimmy Greer's Orch. (T)
 6:00—KMOX Henry, Zeb and Otto.
 6:00—KSD Countess Albani and Cavaliers.
 6:00—KWK Leonard Joy's Orchestra with Guest Artist. NBC.
 6:00—WIL "Inquiring Reporter."
 6:05—WIL Organ Melodies.
 6:15—KMOX Singin' Sam. CBS.
 6:15—WIL Dinner Dance Music — Bigalite Electric Co.
 6:30—KMOX March of Time; Dramatized News Events. CBS.
 6:30—KWK Candle Lightin' Time NBC
 6:30—WIL George L. Weber's Sparklers.
 6:45—WIL Civic Service Period — Mr. Fixit.
 7:00—KMOX Week-end Hour. CBS.
 7:00—KSD Arctic Night Club.
 7:00—KWK First Nighter. NBC.
 7:00—WIL Radio's Six Stars. Biederman Furniture Co.
 7:15—WIL Afro-American Minstrel.
 7:30—KMOX To the Ladies. CBS.
 7:30—KSD Leo Reisman's Orchestra.

Rabbits Jumb out of Hats



THURSTON, the magician, is appearing at the Ambassador theater this week. This is his first appearance in St. Louis at Popular Prices.

Radio Programs For Saturday, September 10

— A. M. —

6:30—KMOX Farm Folks Hour; Farm Information and Texas Tacky.
 6:30—KWK Sunbirds. NBC.
 6:30—KFUO Morning Family Worship.
 6:45—KWK John Fogarty. NBC.
 7:00—KMOX Early Morning Time Signals from the Band Wagon.
 7:00—KSD Gene and Glenn.
 7:00—KWK Waltzes. NBC.
 7:00—WIL Breakfast Club Express—Popular Program.
 7:00—WEW Records.
 7:15—KSD Top of the Morning.
 7:15—KWK Lady Bugs. NBC.
 7:30—KSD Flying Fingers.
 7:30—WEW The Day's Dedication.
 7:45—KWK Nothing But the Truth. NBC.
 7:50—KSD Pieplant Pete.
 8:00—KMOX Public Interest Period.
 8:00—KSD "The Happy Family."
 8:00—WIL Birthday Bells; Children's Program.
 8:00—WEW Records.
 8:15—KMOX Catherine MacKenzie Entertains. CBS.
 8:15—KSD "Souvenirs of Melody."
 8:15—KWK Dance Masters. NBC.
 8:30—KMOX New World Salon Orchestra. CBS.
 8:30—KSD Soloists.
 8:30—KWK Our Daily Food. NBC.
 8:30—WIL Cecil and Sally. (T)
 8:45—KSD Breen and De Rose.
 8:45—KWK Irma Glenn, Organist. NBC.
 8:45—WIL Bill and Bud; Guitarists.
 9:00—KMOX Adventures of Helen and Mary. CBS.
 9:00—KSD Cello Recital.
 9:00—WIL Sunshine Serenader's Orch.
 9:00—WEW Opening Markets.
 9:10—WEW Garvin Martini, Tenor.
 9:15—KSD Household Institute.
 9:15—KWK Rhythm Ramblers. NBC.
 9:15—WIL Morning Organ Melodies with Allen Clarke, Baritone.
 9:30—KMOX Columbia Revue, Orchestra. CBS.
 9:30—KSD Swensen's Orchestra.
 9:45—KWK Spanish Idylis. NBC.
 9:45—WIL Uncle Ben's Lone Star Rangers.
 10:00—KMOX Women's Radio Hour—Featuring Staff Artists.
 10:00—KSD Johnny Marvin, Tenor.
 10:00—KWK Men of Song. NBC.
 10:00—WEW Weather Report; Opening Grain Market.
 10:10—WEW Public School Playground News.
 10:15—KSD On Wings of Song.
 10:15—KWK Pat Barnes.
 10:15—WIL Song of the Strings.
 10:20—WEW Records.
 10:30—KMOX Nucleus's Musical News—Holman Sisters; Guest Artists.
 10:30—KWK Words and Music. NBC.
 10:30—WIL Charles F. Lindsley, Reader.
 10:45—KMOX News Flashes from The St. Louis Star & Times.
 10:45—WIL Ben Bernie and the Lads. (R)
 10:55—KMOX Piano Interlude.
 11:00—KMOX George Hall's Orch. CBS.
 11:00—KSD The Week-Enders.
 11:00—KWK Harold Stoke. Orch. NBC.
 11:00—WEW Chat with the Wilds Man.
 11:15—WIL Master's Music Room. (T)
 11:30—KMOX Madison String Ensemble. CBS.
 11:30—KSD Tom Gerun's Orchestra.
 11:30—KWK National Farm and Home
 11:30—WIL Jack Hyltun's London Novelty Orchestra. (T)
 Hour. NBC.
 11:45—WIL Organ Melodies.
 12:00—KMOX Farm Service Hour — Sunshine Sally.
 12:00—KSD Vacation Wanderings.
 12:00—WIL Noonday Musical — Dick Malloy, Vocalist.

— P. M. —

12:15—KFUO Music.
 12:30—KWK National Farm Forum. NBC
 12:30—WIL Ray and Bob; Guitarists.
 12:45—WIL Hot Timers.
 1:00—KMOX News Flashes from The St. Louis Star & Times.
 1:00—WIL Melody Revue — Reinert's Orchestra.
 1:10—KMOX Home Radio Hour — Henry, Zeb and Otto.
 1:15—KWK Radio Troubadors. NBC.
 1:30—KMOX The Holman Sisters — Piano Duo.
 1:30—KWK Singing Strings. NBC.
 1:30—WIL Organalities; Piano and Organ.
 1:45—KMOX The Banjo Kings.
 1:45—WIL Stars of Songland. (T)
 2:00—KMOX Elmer McDonald, "The Old Timer."

— P. M. —

2:00—WIL Police Releases.
 2:15—KMOX Associated Craft Players
 2:15—KWK Rhythmic Serenade. NBC.
 2:15—WIL Tea Dance. (T)
 2:30—KMOX Down Melody Lane with Leon Marion, Baritone.
 2:30—WIL Afternoon Frolic.
 2:55—KMOX Baseball Game; Washington Senators vs. St. Louis Browns at St. Louis.
 3:00—WIL Musical Gems, Organist.
 3:30—WIL Afro-American Minstrel.
 4:00—KSD Dinner Music.
 4:00—WIL Lights and Shadows; Studio Orchestra.
 4:15—WIL Radio Band-Its.
 4:30—KSD "Opry House."
 4:30—WIL Venician Trio.
 4:40—KMOX Baseball Scores.
 4:45—KMOX News Flashes from the St. Louis Star & Times.
 4:45—KSD Donald Novis.
 4:45—WIL Pirates Club — Children's Program.
 4:55—KMOX Organ Interlude.
 5:00—KMOX The Political Situation in Washington Tonight. CBS.
 5:00—KSD Baseball Scores.
 5:00—WIL Harlem Rhythm.
 5:05—KSD Dance Music.

Selections For Today

Dick Malloy is heard at noon in a mid-day musical on WIL.

Neil Norman's studio frolic will produce some surprises at 2:30 p. m. (WIL.)

Political Situation in Washington tonight will be discussed over KMOX at 5 p. m.

A K-7 dramatic Sketch on KSD at 6:30 p. m.

Week-End Revue with Gus Van and the Pickens Sisters at 7 p. m. on KWK.

The NBC Dream Singer is heard at 9 p. m. on KSD.

Charlie Agnew's orchestra at 10:30 p. m. on KWK.

KMOX County Fair at 10:15 p.m. featuring Texas Tacky; The Mississippians; The Holman Sisters; Henry, Zeb and Otto; and other KMOX stars.

5:15—KMOX Wm. Vincent Hall, Baritone and Orchestra. CBS.
 5:15—WIL Wurlitzer Piano Capers—Hope Barham.
 5:30—KMOX "Skippy."
 5:30—KSD The Rollickers.
 5:30—WIL Bobby Stubbs and His Music.
 5:30—KWK The Cuckoos. NBC.
 5:45—KMOX St. Louis Civic Band—Pevely's Concert and Military Band.
 5:45—KSD The Goldbergs.
 5:45—WIL Jimmy Gree's Orch. (T)
 6:00—KSD Harlem Fantasy.
 6:00—KWK The Play's the Thing NBC
 6:00—WIL "Inquiring Reporter."
 6:05—WIL Organ Melodies.
 6:15—KMOX Vaughn de Leath. CBS.
 6:15—WIL Dinner Hour Concert.
 6:30—KMOX Isham Jones Orch. CBS.
 6:30—KSD K-7 a Dramatic Sketch.
 6:30—KWK Dancing with Countess Dorsay. NBC.
 6:30—WIL George L. Weber's Sparkler's Orchestra.
 7:00—KMOX Ruth Etting and Orchestra. CBS.
 7:00—KSD National Light Operas.
 7:00—KWK Week-End Revue with Gus Van and the Pickens Sisters. NBC.
 7:00—WIL Radio's Six Stars. Biederman Furniture Co.
 7:15—KMOX The Mississippians Male Trio.
 7:15—WIL Afro-American Minstrel.
 7:30—KMOX Ruth Hulse Nelson at the Organ.
 7:30—KWK Orchestra. NBC.
 7:30—WIL Allister Wylie; Piano Styl-ist.
 7:45—KMOX Syracuse Variety Hour.
 7:45—WIL Jack Dunn's Orch. (T)
 8:00—KSD Dance Program.

— P. M. —

8:00—WIL Al Roth and Gloom Chasers —Ambassador Theatre.
 8:15—KMOX Columbia Public Affairs; Charles A. Miller, president of Reconstruction Finance Corporation.
 8:35—WIL Sport Review; Neil Norman
 8:45—KMOX Coral Islanders. CBS.
 8:45—WIL Allen Wills; Songs As You Like Them.
 9:00—KMOX KMOX County Fair.
 9:00—KSD Official Weather Forecast.
 9:00—KWK Amos 'n' Andy. NBC.
 9:00—WIL Jackson-Marable Harlem Syncopators. Sauter's Park.
 9:01—KSD Dream Singer.
 9:15—KSD Merle Thorne.
 9:30—KSD Paul Whiteman's Orch.
 9:30—WIL Afro-American Minstrel.
 9:45—KMOX "Today's Highlights"—Harlan Eugene Read.
 9:45—WIL Dream Boat — Franklyn MacCormack.
 10:00—KMOX Baseball Scores.
 10:00—KSD Buddy Roger's Orchestra.
 10:00—WIL Boswell Sisters. (T)
 10:05—KMOX Musical Weather Report —Official Forecasts.
 10:10—KMOX Public Incorporated.
 10:15—KMOX (Continued.) KMOX County Fair — Featuring Emerson Brown; Henry, Zeb and Otto; Uncle Feezel and His Mountaineers; The Mississippians; Harmonica Harry; Texas Tacky; The Banjo Kings; Holman Sisters; Three Best Girls and The Royal Hawaiians.
 10:15—WIL Ray DeVinney's Orchestra. Diane's Club.
 10:30—KSD Tom Gerun's Orchestra.
 10:30—KWK Charles Agnew's Orchestra. NBC.

— P.M. —

10:45—KMOX Sport Squibs by France Laux.
 11:00—KMOX (Continued) The Fair.
 11:00—KSD Larry Revel's Orchestra.
 11:30—KSD Dance Program from Cleveland.
 12:00—KMOX Al Lyons' Meadowbrook Club Orchestra.
 12:15—KMOX The Royal Hawaiians.
 12:30—KMOX Al Lyons Meadowbrook Club Orchestra.
 12:45—KMOX The Voice at Midnight.

CONTEST FOR FANS STARTS ON KMOX

Listeners looking for radio contests on which to try their hand and luck will do well to give attention to the contest being conducted throughout the month of September over KMOX by the Drug Center, Incorporated.

If they will listen in to the programs, presented each Monday, Wednesday and Friday at 11:15 a. m., and each Wednesday night at 9 p. m., they will hear the details of the contest and be entertained by a variety of artists as well.

CIRCUS QUEEN



TAMARA, the golden haired darling of the European circuses and variety theaters, has at last left her beloved Paris, her adorable Vienna and adoring Berliners to come to America. She is appearing in St. Louis with the World's largest circus—Ringling Brothers and Barnum & Bailey, playing a three-day engagement at Grand and Laclede avenues.

Now In Preparation-

The first complete handbook of radio entertainment

Pictures and Personality Sketches of Local and National Stars.
Complete Log of All Radio Stations on the North American Continent.
Forecast of Millions of Dollars Worth of Radio Entertainment.

*To be published in a special souvenir edition of
Radio and Entertainment for distribution as the
official program of the Eighth Annual South-
west National Radio Show to be held at the
St. Louis Coliseum the week of October 17th.*

This Special Edition will be sent to All Regular Subscribers of Radio
and Entertainment at no extra cost. It will be sold on more than
2000 newstands in Missouri and Illinois at a slight ad-
vance in price.

Subscribe for Radio and Entertainment now
and receive the Special Souvenir Edition free.
SPECIAL PRICE—21 weeks for \$1

(A "Tiny-Mike" will be mailed to you free
upon receipt of your subscription.)

Simply mail \$1 to "Radio and Entertainment"
311 South Third Street—St. Louis, Mo.

Advertisers—

This Special Edition will reach more
than 100,000 selected readers in Greater
St. Louis.

Your message will be read if it appears
in this First Annual Souvenir Hand-Book
of radio entertainment.

Rates on application.