

THE NEW WORLD OF RADIO ENTERTAINMENT

In This Issue

**HOW TO GET
OVERSEAS STATIONS**



**30 MOST POPULAR
FOREIGN STATIONS**



**INTERESTING FACTS
ABOUT WORLD-WIDE
STATIONS**

Simplified
**WORLD-WIDE
RADIO LOG**

5¢

How these eminent people keep in touch with the NEW WORLD of EVENTS, POLITICS and MUSIC

●

"The new Stewart-Warner Magic Dial Radio brings me, from every corner of the earth, not only the cultural advantages of good music and intelligent entertainment — but vitally important information on the trend of international politics and world events. With the new Stewart-Warner All-Wave Radio, you can actually have a 'ringside seat' at any one of the greatest battles in world history — for a price that any modern home can and should afford."

Says

**WALTER
B. PITKIN**

*Noted Professor
and Author of
"Life Begins at
Forty" and
Other Books*



M. GEORGES BUROSSE

*Commandant of the Great French Lines
(On board his flagship, "Ile de France")*

"As master of a great ocean liner, I have a wide range of interests. I must be up-to-date on current events. So it is natural that I am intensely enthusiastic about the new Stewart-Warner Radio with the Magic Dial. At a simple touch of the hand, my Stewart-Warner brings me the best programs. With it I keep in intimate touch with the world at both ends of my voyage — Europe and America."



●

ERNO RAPEE

*Director of Music
Radio City Music Hall — New York*

"I have made it an essential part of my daily program to tune in Paris, London, Rome, Madrid, Prague, Vienna and the South American capitals of culture. I listen as often as I can to broadcasts from abroad in order to keep our productions at the Music Hall up-to-the-minute in modernity and authentic in color. A turn of the Magic Dial on the new Stewart-Warner All-Wave Radio, and the music of the world floods my study — affording me priceless entertainment and fresh ideas for my work."

The Fascinating NEW WORLD of RADIO ENTERTAINMENT

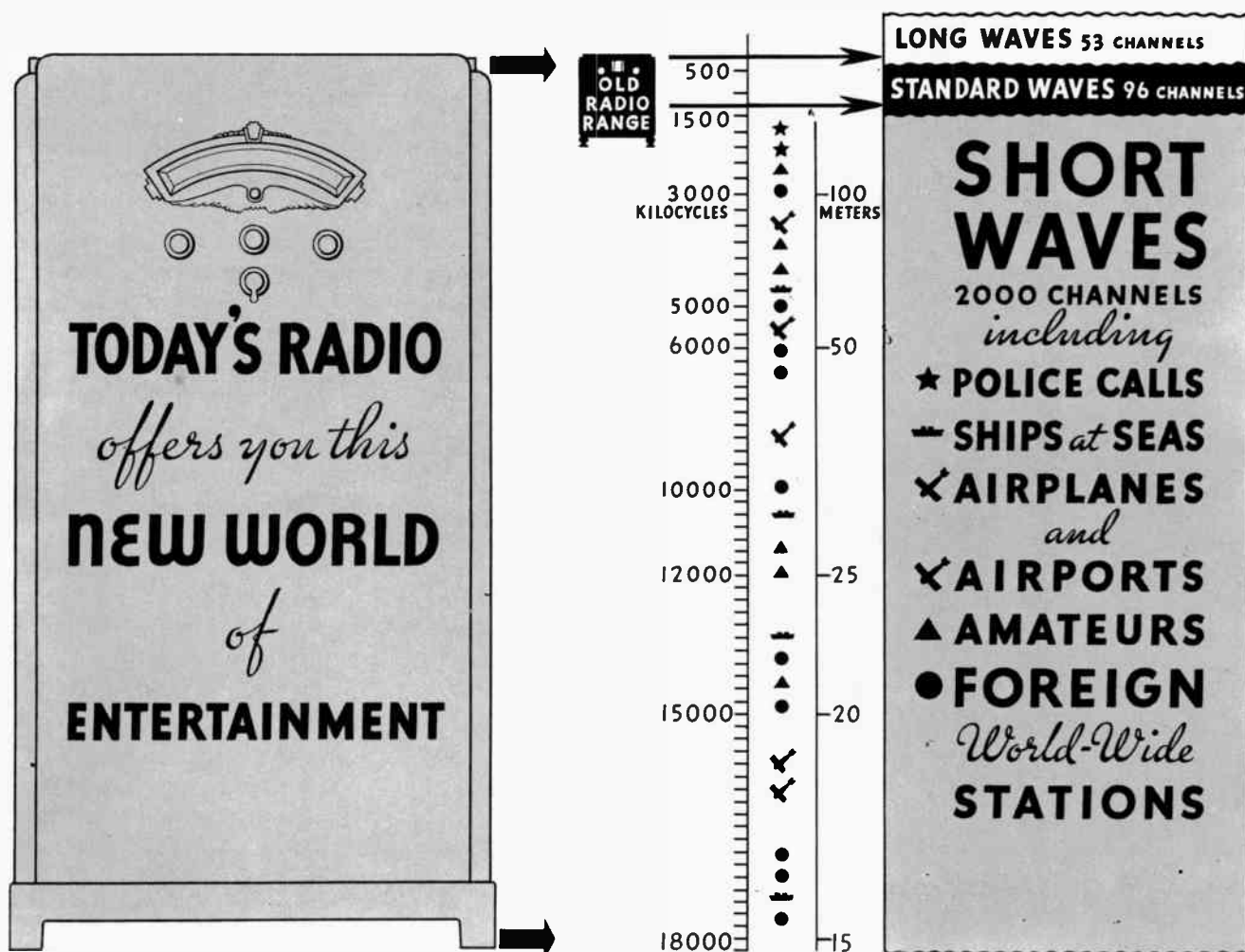
● *Mystery, Romance, Adventure and Thrills Aplenty to Be Found in New Greater Field Opened Up by Short Wave Radio*

Today, radio broadcasting is done over three types of waves, commonly referred to as Long Waves, Standard Waves, and Short Waves. The relative breadth of these wave bands is clearly illustrated in the chart below. The so-called Long Wave Band is restricted to governmental and commercial transmission — almost entirely in code — and is of no interest to the average listener. The Standard Wave Band makes available the broadcasts with which everyone is familiar. Until now, the reception of the average radio set was *confined* to this band.

But, now, radio developments have opened up a new and greater field of entertainment — the Short Wave Band, heretofore *below* the range of an

ordinary radio set. This band — twenty times larger than the Standard Wave Band — makes available radio's latest, greatest thrill. Short Waves bring you Police Calls from cities throughout the country, conversations between Airplanes and Airports, programs from ships at sea, and the supreme thrill of direct broadcasts from over 200 Foreign Stations located throughout the world.

The radio of yesterday made available broadcasts in the Standard Wave Band only. The radio of today brings you this marvelous entertainment, from far greater distances and with far better tone, PLUS the fascinating NEW WORLD of RADIO ENTERTAINMENT to be found in the Short Wave Band.



HOW TO GET OVERSEAS STATIONS

● *Ever Hear a Broadcast Direct from Europe? Here's What It Takes . . . and Why It Is Possible*

Today, hearing direct broadcasts from Foreign Stations throughout the world is no longer a myth. It's an everyday occurrence — made possible by two things:

First, the perfection of simplified world-wide radio sets making it possible for the average listener to tune-in on the short waves over which Foreign Stations broadcast their programs.

Second, the development of better overseas stations, far more powerful and with new directional aerials especially designed to broadcast entertaining programs to the United States and Canada, and to far flung colonial possessions.

Today, the whole world is at your command for merely the price of a good All-Wave radio set, which receives short wave as well as standard wave broadcasts. Now, practically all leading radio manufacturers offer such sets, so you have plenty to choose from. But, select your Round-the-World Radio carefully. Favor the manufacturer with the most experience. Then, have installed in your home a good short wave aerial, one especially suited to your individual location.

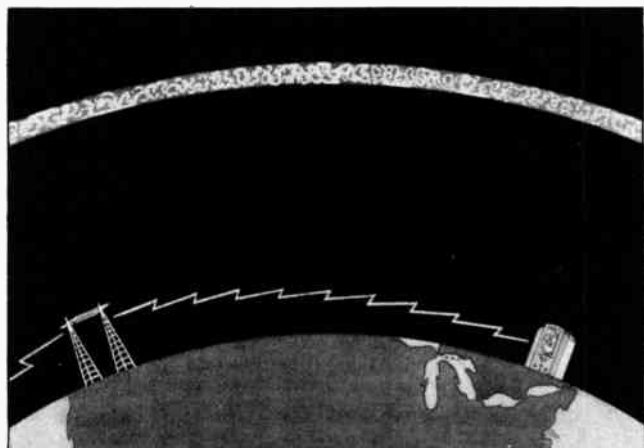
In this magazine you will find a listing of the most frequently heard overseas stations, and the hours each is on the air. Supplement this information with that to be found in the leading short wave radio magazines, because changes in Foreign Sta-

tion broadcasts may occur frequently. Especially recommended is the magazine published monthly by the International Short Wave Club, of East Liverpool, Ohio. Subscription only \$1.00 per year. Keeping constantly posted on short wave broadcasts will lead to a greater enjoyment of your Round-the-World Radio.

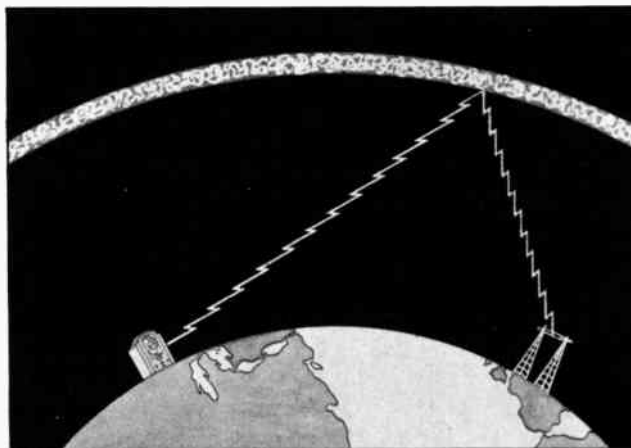


WHY YOU CAN HEAR FOREIGN STATIONS

● Programs from overseas stations are broadcast on short waves, because short waves travel such great distances. The reason for this is clearly shown in the following charts, illustrating the difference between the travel of standard wave broadcasts with which you are familiar, as compared to broadcasts sent out over short waves. ●



Standard wave broadcasts follow the curvature of the earth and travel direct from the sending station to the radio in your home. The earth continuously absorbs these waves until, after they have reached a certain point, their strength is entirely dissipated.



Short wave broadcasts sweep upward until they strike an atmospheric layer, about 150 miles high, and are then deflected toward the earth. Thus avoiding the earth's weakening influences, short waves retain their initial strength and travel great distances.

GSD LONDON ENGLAND

11.75 Megacycles - - 25.53 Meters
HEARD THE WORLD OVER

Programs from this popular station, broadcast to the far flung units of Britain's mighty empire, emanate from the studios of the British Broadcasting Corporation, London. The type of music and the variety of program are comparable to that you might hear over an American chain station.

Eight transmitters are used — GSA, GSB, GSC, GSD, GSE, GSF, GSG and GSH — two of them being employed simultaneously on each broadcast to insure the best possible reception. If you cannot receive the program so well on one of the wave lengths, you can generally tune it in on the other.

Broadcasts from this chain of stations are directed daily to the five Empire zones — Australian, Indian, African, West African and Canadian. Listening to these broadcasts, one can capture much of the very atmosphere of London such as, for instance, hearing the striking of Big Ben and the Westminster Chimes as clearly as though he were walking down the Strand or crossing the famous Waterloo Bridge.

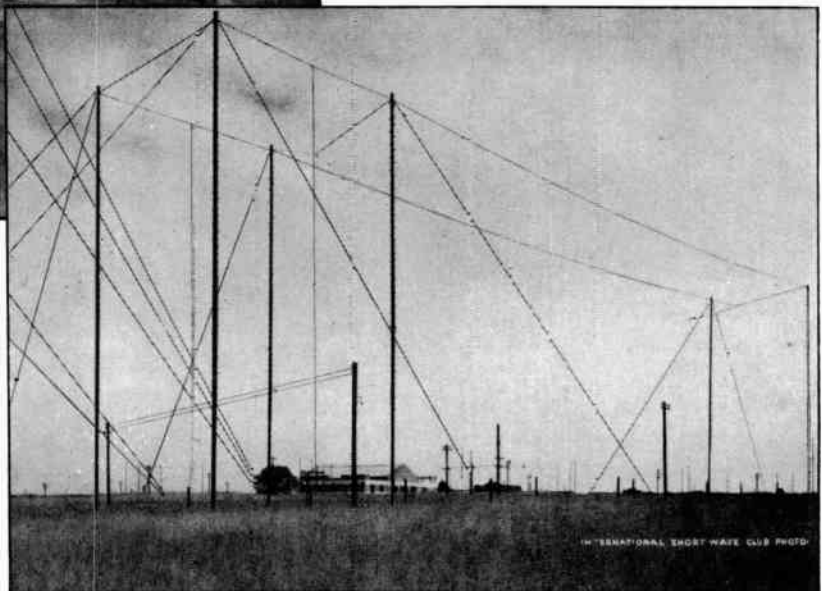


Big Ben, the chimes from which close the programs broadcast from England, is one of the historical landmarks of London. Built in 1858, it is still reputed to be the most powerful striking clock in the world. The bell weighs 13½ tons, the hammer 400 pounds. Its hour hand measures 9 feet long, and its minute hand 14 feet.



Above: The Control Room of the stations at Daventry, England, operated by the British Broadcasting Corporation.

At Right: Studios are in London, but the transmitting plant of these stations is located in Daventry. Here, eighteen immense aerials, including five groups of directional aerials, direct the London broadcasts to the vast British Empire.



PARIS and FRANCE

will probably be among the first objectives of your world tours via radio. Here is pictured the Arc de Triomphe in Paris, the city famed for its festivity and entertainment.



FYA PARIS **FRANCE**
15.24 Megacycles - - 19.68 Meters

"Hallo, hallo, ici c'est Radio Coloniale," says the announcer and you know you are listening to FYA, the most familiar French station, located in Pontoise. Its daily broadcasts offer a variety of entertaining music, interspersed with news announcements generally given in English.

I2RO ROME **ITALY**
11.81 Megacycles - - 25.40 Meters

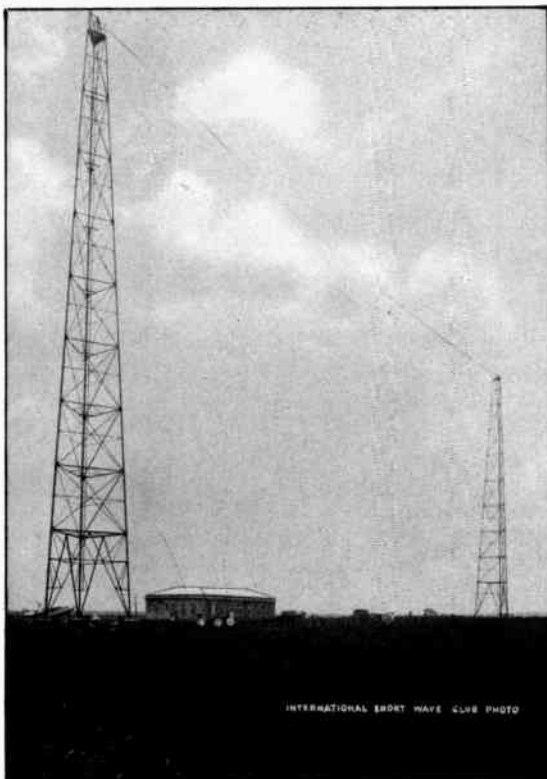
A popular, mellow-voiced signora announces this station as "Radio Roma-Napoli." Most of the programs emanate from the studios in Rome, but some are also picked up from Naples and other cities throughout Italy.

HVJ VATICAN CITY
15.11 Megacycles - - 19.84 Meters

When touring Italy via radio you can also tune in the special programs broadcast daily from Station HVJ, located in Vatican City.

Left: The transmitting station and immense aerials for Station I2RO are located just outside Rome.

Below: With uniforms and equipment of centuries past, the Swiss Guard presents an interesting spectacle, as it passes beneath one of the ancient portals on the Vatican grounds.

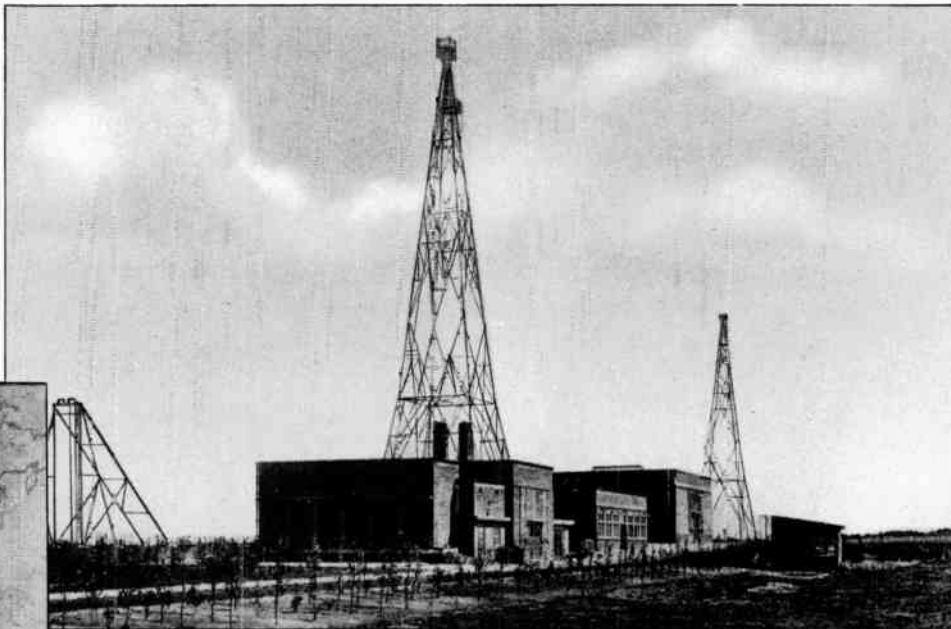
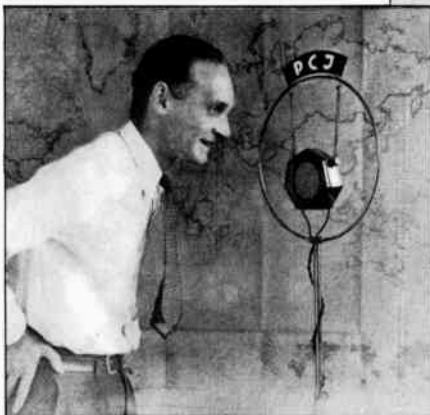


INTERNATIONAL SHORT WAVE CLUB PHOTO



INTERNATIONAL SHORT WAVE CLUB PHOTO

Below: Edward Startz, the famous and accomplished announcer, identifies Station PHI for local and world listeners. To make certain his call letters are clearly understood, this silver-tongued linguist repeats announcements in seven different languages — Dutch, Malay, English, French, German and Portuguese.



Programs from Station PHI are broadcast to the world from this transmitting plant, located in Huizen, Holland. Studios are maintained in Hilversum. This station is on the air Monday, Thursday and Friday from 7:30 to 9:30 A.M. and on Saturdays and Sundays from 7:30 to 11:00 A.M. (E.S.T.).

DJB BERLIN GERMANY

15.20 Megacycles - - 19.73 Meters

"GERMAN ROUND THE WORLD SENDER"

is the name given to this station by its operators the German Broadcasting Company. Opened with a cheery "Hello, America, we hope you have good reception tonight," programs from this station bring to U. S. radio listeners gems of classical music and song. Broadcasting is done from early morning until late at night, two transmitters being used on each program to insure best possible reception. Announcements are made in three languages—first German, then English, then Spanish. Call letters used are DJA, DJB, DJC, DJD. Studios are in Berlin, the transmitting plant being located in Zeesen, Germany.

EAQ MADRID SPAIN

9.86 Megacycles - - 30.40 Meters

The daily broadcasts from this station are colorful and entertaining, and your enjoyment of them will be further increased by the fact that announcements are made in English as well as Spanish.

The programs, broadcast from approximately 5 to 7 P.M. (E.S.T.), offer music, literature and news. The Saturday broadcasts, noon to 2 P.M., are intended primarily for Europe, Canary Islands and other Spanish possessions. On stated evenings each week, one hour of the broadcast is devoted to the International Broadcast Club of London, an organization established for creating good will and a closer relationship among the radio listeners of the world.

PHI HUIZEN HOLLAND

11.73 Megacycles - - 25.57 Meters

The land of dikes and windmills and famous old cities is an interesting one to visit via radio. PHI is not only an outstanding station in Holland, but the world over. Through this station, Holland keeps in touch with her colonial possessions in Dutch East and West Indies. During the summer months, PHI leaves its regular wave band of 11.73 megacycles and broadcasts over 17.77 megacycles.



Station J1AA, Kemikawa-Cho, Kiba-Chen, Japan

sends listeners a program verification card on the front of which is a picture of the station. Broadcasts from Japan are received daily in the U. S. from approximately 5:00 to 7:00 A.M. (E.S.T.).

Below: The front of the card which YV3BC sends to listeners, upon request, to verify receipt of programs. When writing this station, address YV3BC, Radiodifusora Venezuela, Caracas.



Above: This orchestra is typical of those which play the tantalizing tangos and rhumbas broadcast from South American Stations and heard so regularly in the United States.

YV3BC Caracas VENEZUELA

6.15 Megacycles - - 48.78 Meters

This station, located in the capital of the Republic of Venezuela — the most northerly country in South America — is heard consistently by Round-the-World radio listeners in the United States. Its entertaining programs offer a variety of typically South American tangos, rhumbas, songs, etc.

YV3BC broadcasts daily from 10:30 A.M. to 1:00 P.M., and from 4:30 to 9:30 P.M. (E.S.T.). Like several of the other South American stations, announcements are not made in English, but this station can be readily identified by a distinctive chimes signal.

"LA VOZ DE BARRANQUILLA"

P O Box 719
BARRANQUILLA -- COLOMBIA -- S A

WE VERIFY YOUR RECEPTION OF OUR STATION ON

HJ-1-ABB POWER 150

(FORMELY H K D)

| | |
|---|---|
| <p>ON THE AIR DAILY 8 TO 10 PM E S T THURSDAY SPECIAL 13 WC PROGRAM 10 TO 10 30 PM</p> <p>Daily: 11 1/2 hrs - 1 pm. and 5 to 10pm</p> | <p>PLEASE REPORT AGAIN THANKS</p> <p>E. J. PELLET OWNER & OPERATOR</p> <p style="text-align: right;">L. O. P. BARRANQUILLA</p> |
|---|---|

"Ha-Ya-Une-Ah-Bay-Bay," says the station announcer in his best South American English, and you know you are listening to HJ1ABB, Barranquilla, Colombia. And, if you want your reception verified, this station upon request will mail you one of the above verification cards.

VK2ME SYDNEY AUSTRALIA

9.59 Megacycles - - 31.28 Meters

"The Voice of Australia" is a welcome visitor each Sunday in many U. S. homes, with its diversified program of music, including an interesting and instructive talk on some section of Australia. The time of day is also broadcast, together with the chimes from the clock located on the Sydney Post Office.

Each program is opened and closed with the famous laughing call of the Kookabura bird. VK2ME broadcasts Sundays only, from 1:00 to 3:00, 5:00 to 9:00 A.M., and from 11:30 A.M. to 1:30 P.M. (E.S.T.).

HBL Geneva SWITZERLAND

9.59 Megacycles - - 31.27 Meters

This station, together with HBP, is maintained by the League of Nations for a dual purpose. First: to broadcast discussions of the various problems placed before this tribunal and, second, to create good will and a better understanding among the nations of the world.

The program is Saturday — 5:30 to 6:15 P.M. (E.S.T.) — consists of three fifteen minute talks — given first in English, then French, then Spanish. Listeners who wish to communicate with this station will receive prompt, courteous acknowledgment of their letters. Answers to any questions will be cheerfully given. Address: Information Section, League of Nations, Geneva, Switzerland.

TIME TABLE and LOG of the MOST FREQUENTLY HEARD FOREIGN STATIONS

Since there are over 200 Foreign Stations on the air — regularly or irregularly — the Round-the-World radio listener has plenty of opportunity for exploring among the short waves. Presented here is a carefully selected list of Overseas Stations, chosen on the basis of quality of program broadcast, consistency of reception and volume. These stations offer the greatest entertainment and are the ones most frequently heard. Their broadcasts provide an enjoyable variety of concert and symphony orchestras, typical native songs and music, and a goodly fund of information on current daily topics. See next page for additional Short Wave stations.

| Megacycles | Meters | Call | Location | Time of Broadcasts (Eastern Standard Time) |
|---|---|---|--------------------------------------|---|
| 21.47 17.78 15.14 11.86 11.75 9.58 6.05 | 13.97 16.86 19.82 25.28 25.53 31.30 49.59 | GSH GSG GSF GSE GSD GSC GSA | London, ENGLAND | 6 A.M. to 8:30 A.M., daily 6 A.M. to 8:30 A.M. 8:40 A.M. to 12:45 Noon 8:45 A.M. to 12:45 Noon 11:30 P.M. to 1:30 A.M., 1:00-8:00 P.M. 6 P.M. to 8 P.M., daily 12:30 to 1:30 A.M. |
| 15.24 11.88 11.70 | 19.68 25.20 25.63 | FYA FYA FYA | Paris, FRANCE | 7 to 10 A.M., Daily 10 A.M. to 5 P.M., Daily 2 to 11 P.M., Daily |
| 15.20 11.76 9.56 6.02 | 19.73 25.51 31.38 49.83 | DJB DJD DJA DJC | Berlin, GERMANY | 1 to 2 A.M. — 6:30 to 10 A.M., Daily 1 to 4:30 P.M. — 7 to 11 P.M., Daily 6:30 to 10 A.M. — 5 to 8 P.M., Daily 1 to 4:30 P.M. — 9 to 11 P.M., Daily |
| 11.81 | 25.40 | I2RO | Rome, ITALY | 11:30 to 12:30 A.M. — 1.15 to 6 P.M., Daily |
| 15.11 5.96 | 19.84 50.26 | HVJ HVJ | Vatican City, ITALY | 5:00 to 5:30 A.M., Daily 5 to 6 A.M. Sunday — 2:00 to 2:15 P.M., Daily |
| 17.77 11.73 | 16.88 25.57 | PHI PHI | Huizen, HOLLAND | 7:30 to 11:00 A.M., Daily 7:30 to 10:00 A.M., Irreg. |
| 9.86 | 30.40 | EAQ | Madrid, SPAIN | 5 to 7 P.M., Daily |
| 9.60 | 31.25 | CT1AA | Lisbon, PORTUGAL | Tues., Fri., 5 to 7 P.M. |
| 9.59 7.79 | 31.27 38.47 | HBL HBP | Geneva, SWITZERLAND | 5:30 to 6:15 P.M., Saturday 5:30 to 6:15 P.M., Saturday |
| 9.59 | 31.28 | VK2ME | Sydney, AUSTRALIA | Sunday 1 to 3 A.M. — 5 to 9 A.M. 11:30 A.M. to 1:30 P.M. |
| 9.58 9.51 | 31.31 31.55 | VK3LR VK3ME | Melbourne, AUSTRALIA | 3 to 7:30 A.M., Daily 5 to 7 A.M. Wed., Sat. |
| 7.88 | 38.07 | J1AA | Kemikawa — Cho Kiba-Chen — JAPAN | 5 to 7 A.M., Daily |
| 6.66 | 45.00 | HC2RL | Guayaquil, ECUADOR | 6 to 8 P.M., Sunday |
| 6.62 | 45.31 | PRADO | Rio Bomba, ECUADOR | 9 to 11 P.M., Thursday |
| 6.44 | 46.50 | HJ1ABB | Barranquilla, COLOMBIA | 7 to 10 P.M., Daily |
| 6.25 | 48.00 | HJ3ABF | Bogota, COLOMBIA | 7 to 11 P.M., Daily |
| 6.15 6.11 | 48.78 49.08 | YV3BC YV1BC | Caracas, VENEZUELA | 10:30 A.M. to 1 P.M. — 4:30 to 9:30 P.M., Week days 5 to 10 P.M., Daily |
| 6.06 | 49.50 | HIX | Santo Domingo, DOMINICAN REPUBLIC | 9 to 11 A.M. — 3 to 5 P.M. — 9 to 10 P.M., Irreg. |
| 6.02 | 49.80 | XEBT | Mexico City, MEXICO | 6 to 12 P.M., Irreg. |
| 6.00 | 50.00 | COC | Havana, CUBA | 4 to 6 P.M., Daily |
| 6.00 | 50.00 | RV59 | Moscow, U.S.S.R. | 2 to 6 P.M., Daily |
| 5.93 | 50.59 | HJ4ABE | Medellin, COLOMBIA | 6 to 11 P.M., Daily |
| 4.27 | 70.20 | RV15 | Khabarovsh, SIBERIA | 3 to 9 A.M., Daily |
| 4.11 | 73.00 | HCJB | Quito, ECUADOR | 7 to 10 P.M., Daily |

A Partial LOG OF OTHER FOREIGN STATIONS

| Megacycles | Meters | Call | LOCATION | Megacycles | Meters | Call | LOCATION |
|------------|--------|--------|---|------------|--------|----------------|---|
| 21.08 | 14.23 | PSA | Rio de Janerio, Brazil Calls WKK, WLK daytime | 6.13 | 48.92 | LCL | Jeloy, Norway Relays Oslo 11 A.M. to 6 P.M. |
| 21.03 | 14.27 | LSN | Buenos Aires, Argentine 8 A.M. to 4 P.M. WKK and WLK | 6.12 | 49.00 | | Johannesburg, Africa 4 to 6 A.M., 8 to 10:30 A.M., 11 A.M. to 3:40 P.M. |
| 20.02 | 14.99 | DHO | Nauen, Germany Calls PPU and LSM mornings | 6.12 | 49.00 | PK1WK | Bandoeng, Java, 5 to 6:30 A.M. |
| 19.35 | 15.50 | FTM | St. Assise, France Calls LSG 10:00 A.M.—2:00 P.M. | 6.11 | 49.08 | VE9HX | Halifax, N. S. 8:30 to 11:30 A.M., 5 to 10 P.M. |
| 18.04 | 16.63 | GAA | Rugby, England Calls Argentine 10:00 A.M. to 2:00 P.M. | 6.11 | 49.08 | VUC | Calcutta, India, 9:30 A.M. to noon, Saturdays 11:45 P.M. to 3 A.M. |
| 17.75 | 16.92 | HSP | Bangkok, Siam Calls Germany 4:30 A.M. to 6:30 A.M. | 6.10 | 49.20 | HJ1ABD | Cartegena, Colombia 11:30 A.M. to 12:30 P.M., 7 to 9 P.M. |
| 16.04 | 18.71 | KKP | Kauhuku, Hawaii Calls KWU 1:00 to 7:00 P.M. | 6.09 | 49.29 | VE9GW | Bowmanville, Ontario Mon., Tues., Wed., 1 to 10 P.M. Thurs., 2 to 11 P.M. Fri., Sat., 6 A.M. to 11 P.M. Sun., 10 A.M. to 7 P.M. |
| 15.81 | 19.02 | LSL | Buenos Aires, Argentine Calls GAA 8 A.M. to 1 and FTM 1 to 2 P.M. | 6.09 | 49.22 | VE9BJ | St. John's, N.B., Canada Near 5 and 11 P.M. |
| 14.53 | 20.65 | LSN | Buenos Aires, Argentine Phones New York, daytimes | 6.07 | 49.39 | YV5BMO | Maracaibo, Venezuela Irregularly 5:30 to 11 P.M. |
| 14.46 | 20.75 | GBW | Rugby, England Phones MNC 6 A.M. to 6 P.M. | 6.07 | 49.39 | OXY | Shamelback, Denmark 2 to 6:30 P.M., irregular |
| 11.72 | 25.60 | CJRX | Winnipeg, Canada 6 to 10:30 P.M., Sun. 9 to 10 P.M. | 6.07 | 49.39 | VE9CS | Vancouver, B. C. Fri. 12:30 to 1:45 A.M. Sun. Noon to Midnight |
| 10.67 | 28.12 | CEC | Santiago, Chili Calls HJY, evenings, irregularly | 6.06 | 49.50 | HIX | Santo Domingo, R.D. Tues., Fri., 8:10 to 10:10 P.M. Sun., 8:40 to 10:40 A.M. and 2:40 to 4:40 P.M. |
| 10.35 | 28.98 | LSX | Buenos Aires, Argentine Thurs. and Fri. 8 P.M., Sat. 10 P.M. | 6.06 | 49.50 | VO7LO | Nairobi, Kenya Colony 11 A.M. to 2 P.M. daily |
| 9.60 | 31.25 | XETE | Mexico City 8 to 10 P.M., irregular | 6.05 | 49.60 | HJ3ABI | Bogota, Colombia 8 to 10 P.M., irregular |
| 9.37 | 32.02 | HJ5ABH | Palmira, Colombia 11 to 12 A.M. and 7:30 to 9:30 P.M. | 6.02 | 49.83 | CQN | Macao, China Mon., Fri., 7 to 9 A.M. |
| 9.28 | 32.33 | GCB | Rugby, England Calls CGA and SUV afternoons | 6.01 | 49.96 | VE9DN | Drummondville, Canada Sat., after 10:30 P.M. |
| 9.12 | 32.89 | CP5 | La Paz, Bolivia 7:30 to 10:30 P.M., irregularly | 6.01 | 49.96 | COC | Havana, Cuba, Daily 4 to 6 P.M., Also irregular 8 to 10 P.M. |
| 8.05 | 37.33 | CNR | Rabat, Morocco, Africa Sunday 2:30 to 5 P.M. | 5.99 | 50.08 | YV4BSG | Caracas, Venezuela 4:30 to 10:30 P.M. |
| 7.52 | 39.89 | KKH | Kauhuku, Hawaii Calls KWO California evenings | 5.97 | 50.25 | HJ2ABC | Cucuta, Colombia 11 A.M. to Noon, 6 to 9 P.M. |
| 7.40 | 40.55 | HJ3ABD | Bogota, Colombia 7:30 to 11 P.M. | 5.95 | 50.42 | HJ4ABE | Medellin, Colombia, Mon., 7 to 11 P.M. Tues., Thurs., Sat., 6:15 to 8 P.M. Wed., Fri., 7:30 to 10:30 P.M. |
| 7.22 | 41.55 | HKE | Bogota, Colombia Mon. 6 to 7 P.M. Tues., Fri., 8 to 9 P.M. | 5.95 | 50.42 | TGX | Guatemala City, Sun., 2 to 5 A.M. And also near Midnight |
| 7.00 | 42.86 | HJ1ABE | Cartagena, Colombia Mon. 10, Wed. 8 P.M. | 5.88 | 51.49 | HJ2ABA | Tunja, Colombia 1 to 2 and 7:30 to 10 P.M. |
| 6.67 | 44.96 | HC2RL | Guayaquil, Ecuador Sun. 5:45 to 8, Tues. 9:15 to 11:45 P.M. | 5.77 | 52.00 | XDA and XAM | Mexico, Evenings near 7 P.M. |
| 6.61 | 45.35 | REN | Moscow, U.S.S.R., 1 to 6 P.M. | 5.70 | 52.65 | HCK | Quito, Ecuador Generally 8 to 11 P.M. |
| 6.48 | 46.30 | HJ5ABD | Cali, Colombia, 7 to 10 P.M. | 5.60 | 53.57 | HJ3ABC | Cali, Colombia, 8 to 10 P.M. |
| 6.45 | 46.51 | HJ1ABB | Barranquilla, Colombia 7:30 to 10 P.M. daily | 4.32 | 69.44 | GDB- G6RX | Rugby, England Evenings 7 to 10 P.M. |
| 6.32 | 47.50 | HIZ | Santo Domingo, R.D. Daily 4:40 to 5:40; Sat. 11 to 12:40 P.M. | 4.25 | 70.65 | RV15 | Khabarovsk, U.S.S.R., 1 to 9 A.M. |
| 6.23 | 47.80 | HI1A | Dominican Republic 12:10 to 1:40 and 7:40 to 9:40 P.M. daily. Sun. 1:40 to 4:40 P.M. and 7:40 to 9:40 P.M. | | | | |
| 6.13 | 48.92 | ZGE | Kuala Lumpur, Malaya States Sun., Tues., Fri. 6:40 to 8:40 A.M. | | | | |

LEADING U.S. SHORT-WAVE RADIO STATIONS

| Megacycles | Meters | Call | LOCATION | Megacycles | Meters | Call | LOCATION |
|------------|--------|-------|--|------------|--------|-------|---|
| 21.54 | 13.92 | W8XX | Pittsburgh, Pa., 6 A.M. to 1 P.M., Relays for KDKA | 9.59 | 31.27 | W3XAU | Philadelphia, Pa. 11 A.M. to 5 P.M., irregular |
| 21.41 | 14.01 | WKK | Lawrenceville, N. J., 8 A.M. till 4 P.M. Phones PSA, Brazil | 9.57 | 31.36 | W1XAZ | Boston, Mass., 6 A.M. to Midnight |
| 17.78 | 16.87 | W3XAL | Bound Brook, N. J., 9 A.M. to 3 P.M. | 9.53 | 31.49 | W2XAF | Schenectady, N. Y. 6:45 P.M. to 10 P.M. |
| 15.35 | 19.54 | KWU | Dixon, Calif. 2 till 7 P.M. Phones to Hawaii | 9.49 | 31.60 | WEF | Rocky Point, N. Y. Heard in the evening |
| 15.34 | 19.56 | W2XAD | Schenectady, N. Y. Mon., Wed., Fri. 1:30 to 2:30 P.M. Sun. 1 to 3 P.M. | 6.43 | 46.69 | W3XAL | Bound Brook, N. J. Relays Chain Programs |
| 15.27 | 19.64 | W2XE | Wayne, N. J., 10 A.M. to 12 Noon Relays for WABC | 6.14 | 48.86 | W8XX | Pittsburgh, Pa., 3:30 P.M. to 1 A.M. Relays for KDKA |
| 15.21 | 19.72 | W8XX | Pittsburgh, Pa., 9 A.M. to 3:15 P.M. Relays for KDKA | 6.12 | 49.00 | W2XE | Wayne, N. J. 5 P.M. to 10 P.M. Relays for WABC |
| 13.90 | 21.58 | WQP | Rocky Point, N. Y. Calls RNE at intervals A.M. | 6.10 | 49.18 | W3XAL | Bound Brook, N. J., 4 P.M. to Midnight, Mon., Wed., Sat. |
| 11.97 | 25.11 | KKQ | Bolinas, Calif. Heard irregularly evenings | 6.10 | 49.18 | W9XF | Chicago, Ill. 3:30 to 7 P.M., 8:30 to 1 A.M. |
| 11.87 | 25.27 | W8XX | Pittsburgh, Pa. 3:30 to 9 P.M., Relays KDKA | 6.08 | 49.34 | W9XAA | Chicago, Ill. 1 P.M. to about 6 P.M. Sun. |
| 11.83 | 25.36 | W2XE | Wayne, N. J. Relays WABC 2 to 4 P.M. | 6.06 | 49.50 | W3XAU | Philadelphia, Pa., 7 P.M. to Midnight |
| 11.79 | 25.42 | W1XAL | Boston, Mass. Relays NBC Programs | 6.06 | 49.50 | W8XAL | Cincinnati, Ohio, 6:30 A.M. to 7 P.M., 10 P.M. to 2 A.M. |
| | | | | 6.04 | 49.67 | W1XAL | Boston, Mass. Daily 6 to 7 P.M. |

GET THE NEWS
BEFORE IT IS
PUBLISHED



POLICE CALLS

With a short wave radio, you can listen-in on the incessant alarms broadcast to cruising squad cars — you can thrill to the pulse quickening dramas of city life in which radio plays such an important part.

Police stations come on the air, broadcast their message, and immediately go off the air. When a Police Call is tuned in, you can listen to several others by simply keeping your dial at the same location, because there are a number of police stations on each wavelength.

120.48 Meters 2,490 Kilos
WPFJ Clarksburg, W. Va.
WPDZ Fort Wayne, Ind.
WPFJ Hammond, Ind.
WPGO Huntington, N. Y.
WPDT Kokomo, Ind.
KGZU Lincoln, Nebr.
KGHJ Long Beach, Calif.
WPGS Mineola, N. Y.
KGHX Santa Ana, Calif.
KGZD San Diego, Calif.
KGHD Seattle, Wash.
KGHE Snoqualmie, Wash.
WPGN South Bend, Ind.

121.26 Meters 2,474 Kilos
WFFO Knoxville, Tenn.
KGHG Las Vegas, Nev.
WPDF Philadelphia, Pa.
KGHM Reno, Nev.
WPFQ Swarthmore, Pa.
WRDQ Toledo, Ohio

121.65 Meters 2,466 Kilos
WPGA Bay City, Mich.
KGZO Cedar Rapids, Iowa
WPGK Cranston, R. I.
KGFN Davenport, Iowa
KGZG Des Moines, Iowa
WPDF Flint, Mich.
WPEC Memphis, Tenn.
KGPI Omaha, Nebr.
WPFV Pawtucket, R. I.
WPGB Port Huron, Mich.
KGPK Sioux City, Iowa
WPEM Woonsocket, R. I.

122.05 Meters 2,458 Kilos
WPDO Akron, Ohio
WPDV Charlotte, N. C.
WRBH Cleveland, Ohio
KGZV Lubbock, Texas

WPGD Rockford, Ill.
WPDG Youngstown, Ohio
KGZI Wichita Falls, Texas

122.40 Meters 2,450 Kilos
WPEF Bronx, N. Y.
WPBE Brooklyn, N. Y.
KGZF Chanute, Kans.
KGZP Coffeyville, Kans.
KGPO Honolulu, Hawaii
WPDK Milwaukee, Wis.
WPEG New York, N. Y.
KGPH Oklahoma City, Okla.
KGPO Tulsa, Okla.
KGZV Wichita, Kans.

122.85 Meters 2,442 Kilos
WPGI Binghamton, N. Y.
KGPX Denver, Colo.
WPEB Grand Rapids, Mich.
WMDZ Indianapolis, Ind.
WPFQ Jacksonville, Fla.
WFFT Lakeland, Fla.
WPDF Lansing, Mich.
WPDFE Louisville, Ky.
WPFZ Miami, Fla.

122.85 Meters 2,442 Kilos
WFFC Muskegon, Mich.
WPFK Palm Beach, Fla.
KGPV Portland, Ore.
WFFE Reading, Pa.
WPDFH Richmond, Ind.
WPES Saginaw, Mich.
KCZR Salem, Ore.

123.45 Meters 2,430 Kilos
WPDJ Columbus, Ohio
WPDFM Dayton, Ohio
WPFK Hackensack, N. J.
KGPB Minneapolis, Minn.
WPEK New Orleans, La.
KGZJ Phoenix, Ariz.

WPGI Portsmouth, Ohio
WPDS St. Paul, Minn.
WPGA Shreveport, La.

123.80 Meters 2,422 Kilos
WMJ Buffalo, N. Y.
KGPE Kansas City, Mo.
WPFU Portland, Maine
KGZC Topeka, Kans.
KGPV Vallejo, Calif.
WPDW Washington, D. C.

124.37 Meters 2,414 Kilos
KGZV Aberdeen, Wash.
WPGH Albany, N. Y.
KGZX Albuquerque, N. M.
WPDY Atlanta, Ga.
KGPS Bakersfield, Calif.
WPFH Baltimore, Md.
WFFI Columbus, Ga.
WCK WPDYX Detroit, Mich.
KGZM El Paso, Texas
KGZA Fresno, Calif.
WRDR Grosse Point, Mich.
WMO Highland Park, Mich.
WPGM Lagrange, Ga.
KGZO Santa Barbara, Calif.
KGPV Santa Fe, N. M.
KGPB Seattle, Wash.
KGPS Spokane, Wash.
KGZN Tacoma, Wash.
WPDV Tulare, Calif.
WPGJ Utica, N. Y.

124.68 Meters 2,406 Kilos
KGBZ Little Rock, Ark.
KGPW Salt Lake City, Utah

175.23 Meters 1,712 Kilos
WPEB Arlington, Mass.
KGPJ Beaumont, Texas
WPDW-C-D Chicago, Ill.

KVP Dallas, Texas
WPEI E. Providence, R. I.
KGPL Los Angeles, Calif.
WPFN New Bedford, Mass.
WPGA Newton, Mass.
KGJX Pasadena, Calif.
WPDU Pittsburgh, Pa.
WPGF Providence, R. I.
KGZY San Bernardino, Calif.
WPEH Somerville, Mass.
KGZQ Waco, Texas

175.85 Meters 1,706 Kilos
WKDU Cincinnati, Ohio
WPET Lexington, Ky.
KGPC St. Louis, Mo.

178.36 Meters 1,682 Kilos
KGHO Des Moines, Iowa
WPGG Findlay, Ohio

179.21 Meters 1,674 Kilos
KGHK Palo Alto, Calif.
KGPD San Francisco, Calif.
KGPB San Jose, Calif.
KGZT Santa Cruz, Calif.

180.07 Meters 1,666 Kilos
WRDS East Lansing, Mich.
WMP Framingham, Mass.
WPEW Northampton, Mass.
WPEL Bridgewater, Mass.

180.88 Meters 1,658 Kilos
KSW Berkeley, Calif.
WPGC S. Schenectady, N. Y.
KGZE San Antonio, Texas

184.05 Meters 1,630 Kilos
WEY Boston, Mass.
WKDT Detroit, Mich.
KGPB San Francisco, Calif.
KIDA Seattle, Wash.

Short Waves Carry the Conversations between AIRPLANES and AIRPORTS



Skilled pilots, winging their way across the continent in mail and passenger planes, keep in constant touch with their ground crews via short wave radio.

With a Round-the-World radio set, you can eavesdrop on these epics of the air — hear warnings sent aloft of blinding fogs and hazardous storms — then, on the same wave length, listen to the voices of the pilots themselves, punctuated by the steady drone of the mighty motors.

Today, there are 138 Airplane Stations in the United States. They are assigned to no specific wave length sector — are interspersed throughout the entire short wave band — but are most concentrated between 3000-3500 kilocycles, and 52-59 meters (5.0 - 5.5 megacycles).



Short Waves Also Bring Broadcasts from SHIPS at SEA . . .

These stations relay telephone conversations from shore to ships, and vice versa. Also, they are frequently rented to broadcast special programs direct from the big ocean liners at sea. Ship Stations broadcast on four bands:

- 16.85 — 18.27 Meters (17.80 — 16.42 Megacycles)
- 22.50 — 24.30 Meters (13.34 — 12.35 Megacycles)
- 33.93 — 36.58 Meters (8.84 — 8.20 Megacycles)
- 67.87 — 73.17 Meters (4.42 — 4.10 Megacycles)

Phone calls from shore to ships are most frequently broadcast from Station WOO, Ocean Gate, N. J., on 17.12 megacycles (17.52 meters), and 9.53 megacycles (35.02 meters). This station phones ships, England and South America.

Calls of Prominent Passenger Liners:

| | | | |
|------|-----------------------|------|-----------------------|
| GLRZ | Aquitania | DAAC | Europa |
| GMJQ | Belgeland | DXJC | Hamburg |
| GBZW | Berengeria | FNSM | Ile de France |
| DDAS | Bremen | GFVV | Majestic |
| GFJX | Caledonia | VQJM | Monarch of Bermuda |
| DOBX | Columbus | DHRL | New York |
| DDDT | Deutschland | GLSQ | Olympic |
| GMBJ | Empress of Britain | VQJP | Queen of Bermuda |

AMATEUR PHONE STATIONS

You can listen to the "Radio Engineers of Tomorrow" chat through thousands of miles of space with friends they never see. These stations are licensed by the Federal Radio Commission the same as any commercial broadcast station.* But, these so-called "Amateur" stations are not assigned to any definite wave lengths, they can broadcast anywhere within the "amateur bands" established by governmental regulations. You can listen to Amateur Phone conversations at approximately 21 meters (14 megacycles), 75 meters (4.0 megacycles), 135-160 meters (1750-2000 kilocycles). The amateur band between 40-42 meters is reserved for broadcasts in code.



UNITED STATES BROADCAST STATIONS

| Call | Kilocycles | Location | Call | Kilocycles | Location | Call | Kilocycles | Location | Call | Kilocycles | Location |
|------|------------|-----------------------|------|------------|----------------------|------|------------|---------------------------------|------|------------|-------------------------|
| KABC | 1420 | San Antonio, Tex. | KGCA | 1270 | Decorah, Iowa | KMO | 1330 | Tacoma, Wash. | KVOR | 1270 | Colorado Springs, Colo. |
| KALE | 1300 | Portland, Ore. | KGCR | 1210 | Watertown, S. D. | KMOX | 1090 | St. Louis, Mo. | KVOS | 1200 | Bellingham, Wash. |
| KARK | 890 | Little Rock, Ar. | KGCU | 1240 | Manda, N. D. | KMPC | 710 | Beverly Hills, Cal. | KWCR | 1430 | Cedar Rapids, Ia. |
| KASA | 1210 | Elk City, Okla. | KGDX | 1310 | Wolf Point, Mont. | KMTR | 570 | Hollywood, Cal. | KWEA | 1210 | Shreveport, La. |
| KBPS | 1420 | Portland, Ore. | KGDE | 1200 | Fergus Falls, Minn. | KNOW | 1500 | Austin, Tex. | KWFB | 1210 | Hilo, Hawaii |
| KBTM | 1200 | Jonesboro, Ark. | KGDM | 1100 | Stockton, Cal. | KNX | 1050 | Hollywood, Cal. | KWGG | 1200 | Stockton, Cal. |
| KCMC | 1420 | Texarkana, Ark. | KGDY | 1340 | Huron, S. D. | KOA | 830 | Denver, Colo. | KWJJ | 1040 | Portland, Ore. |
| KCRC | 1370 | Enid, Okla. | KGEG | 1200 | Yuma, Colo. | KOAC | 550 | Corvallis, Ore. | KWK | 1350 | St. Louis, Mo. |
| KCRJ | 1310 | Jerome, Ariz. | KGER | 1360 | Long Beach, Cal. | KOB | 1180 | Albuquerque, N. M. | KWKC | 1370 | Kansas City, Mo. |
| KDB | 1500 | Santa Barbara, Cal. | KGEZ | 1310 | Kalispell, Mont. | KOH | 1380 | Reno, Nev. | KWKH | 850 | Shreveport, La. |
| KDFN | 1440 | Casper, Wyo. | KGFF | 1420 | Shawnee, Okla. | KOIL | 1260 | Council Bluffs, Ia. | KWLC | 1270 | Decorah, Iowa |
| KDKA | 980 | Pittsburgh, Pa. | KGFG | 1370 | Oklahoma, Okla. | KOIN | 940 | Portland, Ore. | KWSC | 1220 | Pullman, Wash. |
| KDLR | 1210 | Devils Lake, N. D. | KGFI | 1500 | Corpus Christi, Tex. | KOL | 1270 | Seattle, Wash. | KWTO | 560 | Springfield, Mo. |
| KDYL | 1290 | Salt Lake City, U. | KGfJ | 1200 | Los Angeles, Cal. | KOMA | 1480 | Oklahoma City, Okla. | KWWG | 1260 | Brownsville, Tex. |
| KECA | 1430 | Los Angeles, Cal. | KGfK | 1500 | Moorehead, Minn. | KOMO | 920 | Seattle, Wash. | KWYO | 1370 | Sheridan, Wyo. |
| KELW | 780 | Burbank, Cal. | KGfL | 1370 | Rosewell, N. M. | KONO | 1370 | San Antonio, Tex. | KXA | 760 | Seattle, Wash. |
| KERN | 1370 | Bakersfield, Cal. | KGfW | 1310 | Kearney, Nebr. | KOOS | 1370 | Marshfield, Ore. | KXL | 1420 | Portland, Ore. |
| KEX | 1180 | Portland, Ore. | KGfX | 630 | Pierre, S. D. | KORE | 1420 | Eugene, Ore. | KXO | 1500 | El Centro, Cal. |
| KFAB | 770 | Lincoln, Nebr. | KGGM | 1420 | San Francisco, Cal. | KOTN | 1500 | Pine Bluff, Ark. | KXRO | 1310 | Aberdeen, Wash. |
| KFAC | 1300 | Los Angeles, Cal. | KGfG | 1010 | Coffeyville, Kan. | KOY | 1390 | Phoenix, Ariz. | KXYZ | 1440 | Houston, Tex. |
| KFBB | 1280 | Great Falls, Mont. | KGGM | 1230 | Albuquerque, N. M. | KPCB | 650 | Seattle, Wash. | KYA | 1230 | San Francisco, Cal. |
| KFBI | 1050 | Abilene, Kan. | KGfH | 1320 | Pueblo, Colo. | KPJM | 1500 | Prescott, Ariz. | KYW | 1020 | Chicago, Ill. |
| KFBK | 1310 | Sacramento, Cal. | KGHI | 1200 | Little Rock, Ark. | KPO | 680 | San Francisco, Cal. | WAAB | 1410 | Boston, Mass. |
| KFBL | 1370 | Everett, Wash. | KGHL | 950 | Billings, Mont. | KPOF | 880 | Denver, Colo. | WAAP | 920 | Chicago, Ill. |
| KFDM | 560 | Beaumont, Tex. | KGIR | 1340 | Butte, Mont. | KPPC | 1210 | Pasadena, Cal. | WAAT | 940 | Jersey City, N. J. |
| KFDY | 780 | Brookings, S. D. | KGIW | 1420 | Alamosa, Colo. | KPPQ | 1500 | Wenatchee, Wash. | WAAW | 660 | Omaha, Nebr. |
| KFEL | 920 | Denver, Colo. | KGIX | 1420 | Las Vegas, Nev. | KPRC | 920 | Houston, Tex. | WABC | 860 | New York, N. Y. |
| KFEQ | 680 | St. Joseph, Mo. | KGKB | 1500 | Tyler, Tex. | KQV | 1380 | Pittsburgh, Pa. | WABI | 1200 | Bangor, Me. |
| KFGQ | 1310 | Boone, Iowa | KGKL | 1370 | San Angelo, Tex. | KQW | 1010 | San Jose, Cal. | WACO | 1420 | Waco, Tex. |
| KFH | 1300 | Wichita, Kan. | KGKO | 570 | Wichita Falls, Tex. | KRE | 1370 | Berkeley, Cal. | WADC | 1320 | Akron, Ohio |
| KFI | 640 | Los Angeles, Cal. | KGKY | 1500 | Scottsbluff, Nebr. | KREG | 1500 | Santa Ana, Cal. | WAGM | 1420 | Presque Isle, Me. |
| KFIO | 1120 | Spokane, Wash. | KGMB | 1320 | Honolulu, Hawaii | KRGV | 1260 | Harlingen, Tex. | WAIU | 640 | Columbus, Ohio |
| KFIZ | 1420 | Fond du Lac, Wis. | KGNF | 1430 | North Platte, Nebr. | KRKD | 1120 | Los Angeles, Cal. | WALA | 1410 | Mobile, Ala. |
| KFJB | 1200 | Marshalltown, Iowa | KGNO | 1340 | Dodge City, Kan. | KRLD | 1040 | Dallas, Tex. | WALR | 1210 | Zanesville, Ohio |
| KFJI | 1210 | Klamath Falls, Ore. | KGO | 790 | San Francisco, Cal. | KRMD | 1310 | Shreveport, La. | WAMC | 1420 | Anniston, Ala. |
| KFJM | 1370 | Grand Forks, N. D. | KGRS | 1410 | Amarillo, Tex. | KROW | 930 | Oakland, Cal. | WAML | 1310 | Laurel, Miss. |
| KFJR | 1300 | Portland, Ore. | KGU | 750 | Honolulu, Hawaii | KRSC | 1120 | Seattle, Wash. | WAPI | 1140 | Birmingham, Ala. |
| KFJZ | 1370 | Fort Worth, Tex. | KGVO | 1200 | Missoula, Mont. | KSAC | 580 | Manhattan, Kan. | WARD | 1400 | Brooklyn, N. Y. |
| KFKA | 880 | Greeley, Colo. | KGW | 620 | Portland, Ore. | KSCJ | 1330 | Sioux City, Iowa | WASH | 1270 | Grand Rapids, Mich. |
| KFKU | 1220 | Lawrence, Kan. | KGY | 1210 | Olympia, Wash. | KSD | 550 | St. Louis, Mo. | WATR | 1190 | Waterbury, Conn. |
| KFNF | 890 | Shenandoah, Iowa | KHJ | 900 | Los Angeles, Cal. | KSEI | 890 | Pocatello, Idaho | WAVE | 940 | Louisville, Ky. |
| KFOX | 1210 | Lincoln, Nebr. | KHQ | 590 | Spokane, Wash. | KSL | 1130 | Salt Lake City, U. | WAWZ | 1350 | Zarephath, N. J. |
| KFOX | 1250 | Long Beach, Cal. | KICA | 1370 | Clovis, N. M. | KSO | 1320 | Des Moines, Iowa | WAZL | 1420 | Hazelton, Pa. |
| KFPL | 1310 | Dubuque, Tex. | KICK | 1420 | Carter Lake, Iowa | KSOO | 1110 | Sioux Falls, S. D. | WBAA | 1400 | Lafayette, Ind. |
| KFPM | 1310 | Greenville, Tex. | KID | 1320 | Idaho Falls, Idaho | KSTP | 1460 | St. Paul, Minn. | WBAL | 1060 | Baltimore, Md. |
| KFPW | 1210 | Fort Smith, Ark. | KIDW | 1350 | Boise, Idaho | KSUN | 1200 | Lowell, Ariz. | WBAP | 800 | Fort Worth, Tex. |
| KFPY | 890 | Spokane, Wash. | KIDW | 1420 | Lamar, Colo. | KTAB | 560 | San Francisco, Cal. | WBAX | 1210 | Wilkes-Barre, Pa. |
| KFQD | 600 | Anchorage, Alaska | KIEM | 1210 | Eureka, Cal. | KTAR | 620 | Phoenix, Ariz. | WBBC | 1400 | Brooklyn, N. Y. |
| KFRC | 610 | San Francisco, Cal. | KIEV | 850 | Glendale, Cal. | KTAT | 1240 | Fort Worth, Tex. | WBBL | 1210 | Richmond, Va. |
| KFRU | 630 | Columbia, Mo. | KIFH | 1310 | Juneau, Alaska | KTBS | 1450 | Shreveport, La. | WBBS | 770 | Chicago, Ill. |
| KFSG | 600 | San Diego, Cal. | KIFS | 1518 | Fort Klamath, Ore. | KTFI | 1240 | West Twin Falls, Ida. | WBBR | 1300 | Brooklyn, N. Y. |
| KFSG | 1120 | Los Angeles, Cal. | KIT | 1310 | Yakima, Wash. | KTHS | 1060 | Hot Springs National Park, Ark. | WBBZ | 1200 | Ponca City, Okla. |
| KFUO | 550 | St. Louis, Mo. | KJBS | 1070 | San Francisco, Cal. | KTM | 780 | Los Angeles, Cal. | WBCM | 1410 | Bay City, Mich. |
| KFVD | 1000 | Los Angeles, Cal. | KJR | 970 | Seattle, Wash. | KTRB | 740 | Modesto, Cal. | WBEN | 900 | Buffalo, N. Y. |
| KFVS | 1210 | Cape Girardeau, Mo. | KLCN | 1290 | Blytheville, Ark. | KTRH | 630 | Houston, Tex. | WBEO | 1310 | Marquette, Mich. |
| KFWB | 950 | Hollywood, Cal. | KLO | 1400 | Ogden, Utah | KTSA | 1290 | San Antonio, Tex. | WBHS | 1200 | Huntsville, Ala. |
| KFXD | 1200 | Nampa, Idaho | KLPM | 1240 | Minot, N. D. | KTSM | 1310 | El Paso, Tex. | WBIG | 1440 | Greensboro, N. C. |
| KFXF | 920 | Denver, Colo. | KLRA | 1390 | Little Rock, Ark. | KTUL | 1400 | Tulsa, Okla. | WBNO | 1200 | New Orleans, La. |
| KFXJ | 1200 | Grand Junction, Colo. | KLS | 1440 | Oakland, Cal. | KTW | 1220 | Seattle, Wash. | WBNS | 1430 | Columbus, Ohio |
| KFXM | 1210 | San Bernardino, Cal. | KLUF | 1370 | Galveston, Tex. | KUJ | 1370 | Walla Walla, Wash. | WBNX | 1350 | New York, N. Y. |
| KFXR | 1310 | Oklahoma, Okla. | KLX | 880 | Oakland, Cal. | KUMA | 1420 | Yuma, Ariz. | WBOQ | 860 | New York, N. Y. |
| KFYO | 1310 | Lubbock, Tex. | KLZ | 560 | Denver, Colo. | KUOA | 1260 | Fayetteville, Ark. | WBOW | 1310 | Terre Haute, Ind. |
| KFYR | 550 | Bismarck, N. D. | KMA | 930 | Shenandoah, Iowa | KUSD | 890 | Vermillion, S. D. | WBRC | 930 | Birmingham, Ala. |
| KGA | 1470 | Spokane, Wash. | KMAC | 1370 | San Antonio, Tex. | KVI | 570 | Tacoma, Wash. | WBRE | 1310 | Wilkes-Barre, Pa. |
| KGAR | 1370 | Tucson, Ariz. | KMBC | 950 | Kansas City, Mo. | KVL | 1370 | Seattle, Wash. | WBSO | 920 | Babson Park, Mass. |
| KGB | 1330 | San Diego, Cal. | KMED | 1310 | Medford, Ore. | KVOA | 1260 | Tucson, Ariz. | WBTM | 1080 | Charlotte, N. C. |
| KGBU | 900 | Ketchikan, Alaska | KMJ | 580 | Fresno, Cal. | KVOO | 1140 | Tulsa, Okla. | | | |
| KGBX | 1310 | Springfield, Mo. | KMLB | 1200 | Monroe, La. | | | | | | |
| KGBZ | 930 | York, Nebr. | KMMJ | 740 | Clay Center, Nebr. | | | | | | |

(Continued on next page)

UNITED STATES BROADCAST STATIONS

Call Kilocycles Location

(Continued from preceding page)

WBZ 990 Boston, Mass.
 WBZA 990 Springfield, Mass.
 WCAC 600 Storrs, Conn.
 WCAD 1220 Canton, N. Y.
 WCAE 1220 Pittsburgh, Pa.
 WCAL 1250 Northfield, Minn.
 WCAM 1280 Camden, N. J.
 WCAO 600 Baltimore, Md.
 WCAP 1280 Asbury Park, N. J.
 WCAT 1200 Rapid City, S. D.
 WCAU 1170 Philadelphia, Pa.
 WCAX 1200 Burlington, Vt.
 WCAZ 1070 Carthage, Ill.
 WCBA 1440 Allentown, Pa.
 WCBZ 1080 Zion, Ill.
 WCBM 1370 Baltimore, Md.
 WCBS 1210 Springfield, Ill.
 WCCO 810 Minneapolis, Minn.
 WCFL 970 Chicago, Ill.
 WCHS 580 Charleston, W. Va.
 WCKY 1490 Covington, Ky.
 WCLO 1200 Janesville, Wis.
 WCLS 1310 Joliet, Ill.
 WCNW 1500 Brooklyn, N. Y.
 WCOA 1340 Pensacola, Fla.
 WCOC 880 Meridan, Miss.
 WCRW 1210 Chicago, Ill.
 WCSC 1360 Charleston, S. C.
 WCSH 940 Portland, Me.
 WDAE 1220 Tampa, Fla.
 WDAF 610 Kansas City, Mo.
 WDAG 1410 Amarillo, Tex.
 WDAH 1310 El Paso, Tex.
 WDAS 1370 Philadelphia, Pa.
 WDAY 940 Fargo, N. D.
 WDBJ 930 Roanoke, Va.
 WDBO 580 Orlando, Fla.
 WDEL 1120 Wilmington, Del.
 WDEV 550 Waterbury, Vt.
 WDGY 1180 Minneapolis, Minn.
 WDNC 1500 Durham, N. C.
 WDOD 1280 Chattanooga, Tenn.
 WDRC 1330 Hartford, Conn.
 WDSU 1250 New Orleans, La.
 WDWZ 1070 Tuscola, Ill.
 WDAF 660 New York, N. Y.
 WEAN 780 Providence, R. I.
 WEBC 1290 Superior, Wis.
 WEBQ 1210 Harrisburg, Ill.
 WEBR 1310 Buffalo, N. Y.
 WEDC 1210 Chicago, Ill.
 WEED 1420 Greenville, N. C.
 WEEI 590 Boston, Mass.
 WEEU 830 Reading, Pa.
 WEHC 1350 Charlottesville, Va.
 WEHS 1420 Cicero, Ill.
 WELL 1420 Battle Creek, Mich.
 WENC 1420 Albany, Ga.
 WENR 870 Chicago, Ill.
 WESG 680 Elmira, N. Y.
 WEVD 1300 New York, N. Y.
 WEW 760 St. Louis, Mo.
 WEXL 1310 Royal Oak, Mich.
 WFAA 800 Dallas, Tex.
 WFAB 1300 New York, N. Y.
 WFAM 1200 South Bend, Ind.
 WFAS 1210 White Plains, N. Y.
 WFBC 1200 Greenville, S. C.

Call Kilocycles Location

WFBE 1200 Cincinnati, Ohio
 WFBG 1310 Altoona, Pa.
 WFBL 1360 Syracuse, N. Y.
 WFBM 1230 Indianapolis, Ind.
 WFBR 1270 Baltimore, Md.
 WFDF 1310 Flint, Mich.
 WFEA 1430 Manchester, N. H.
 WFI 560 Philadelphia, Pa.
 WFLA 620 Clearwater, Fla.
 WGAL 1500 Lancaster, Pa.
 WGAR 1450 Cleveland, Ohio
 WGBB 1210 Freeport, N. Y.
 WGBF 630 Evansville, Ind.
 WGBI 880 Scranton, Pa.
 WGCM 1210 Mississippi City, Miss.
 WGCP 1250 Newark, N. J.
 WGES 1360 Chicago, Ill.
 WGH 1310 Newport News, Va.
 WGL 1370 Fort Wayne, Ind.
 WGLC 1370 Hudson Falls, N. Y.
 WGN 720 Chicago, Ill.
 WGNV 1210 Chester Twp., N. Y.
 WGR 550 Buffalo, N. Y.
 WGST 890 Atlanta, Ga.
 WGY 790 Schenectady, N. Y.
 WHA 940 Madison, Wis.
 WHAD 1120 Milwaukee, Wis.
 WHAM 1150 Rochester, N. Y.
 WHAS 820 Louisville, Ky.
 WHAT 1310 Philadelphia, Pa.
 WHAZ 1300 Troy, N. Y.
 WHB 860 Kansas City, Mo.
 WHBC 1200 Canton, Ohio
 WHBD 1370 Mt. Orab, Ohio
 WHBF 1210 Rock Island, Ill.
 WHBL 1410 Sheboygan, Wis.
 WHBQ 1370 Memphis, Tenn.
 WHBU 1210 Anderson, Ind.
 WHBY 1200 Green Bay, Wis.
 WHDF 1370 Calumet, Mich.
 WHDH 830 Boston, Mass.
 WHDL 1420 Tupper Lake, N. Y.
 WHEB 740 Portsmouth, N. H.
 WHEC 1430 Rochester, N. Y.
 WHEF 1500 Koscusko, Miss.
 WHET 1370 Dothan, Ala.
 WHFC 1420 Cicero, Ill.
 WHIS 1410 Bluefield, W. Va.
 WHK 1390 Cleveland, Ohio
 WHN 1010 New York, N. Y.
 WHO 1000 Des Moines, Ia.
 WHOM 1450 Jersey City, N. J.
 WHP 1430 Harrisburg, Pa.
 WIBA 1280 Madison, Wis.
 WIBG 970 Glenside, Pa.
 WIBM 1370 Jackson, Mich.
 WIBU 1210 Poynette, Wis.
 WIBW 580 Topeka, Kan.
 WIBX 1200 Utica, N. Y.
 WICC 600 Bridgeport, Conn.
 WIL 1200 St. Louis, Mo.
 WILL 890 Urbana, Ill.
 WILM 1420 Wilmington, Del.
 WIND 560 Gary, Ind.
 WINS 1180 New York, N. Y.
 WIOD 1300 Miami, Fla.
 WIP 610 Philadelphia, Pa.
 WIS 1010 Columbia, S. C.

Call Kilocycles Location

WISN 1120 Milwaukee, Wis.
 WJAC 1310 Johnstown, Pa.
 WJAG 1060 Norfolk, Nebr.
 WJAR 890 Providence, R. I.
 WJAS 1290 Pittsburgh, Pa.
 WJAX 900 Jacksonville, Fla.
 WJAY 610 Cleveland, Ohio
 WJBC 1200 La Salle, Ill.
 WJBI 1210 Red Bank, N. J.
 WJBK 1500 Detroit, Mich.
 WJBL 1200 Decatur, Ill.
 WJBO 1420 Baton Rouge, La.
 WJBW 1200 New Orleans, La.
 WJBY 1210 Gadsden, Ala.
 WJDX 1270 Jackson, Miss.
 WJEX 1210 Hagerstown, Md.
 WJEM 990 Tupelo, Miss.
 WJIM 1210 Lansing, Mich.
 WJJD 1130 Chicago, Ill.
 WJMS 1420 Ironwood, Mich.
 WJR 750 Detroit, Mich.
 WJSV 1460 Washington, D. C.
 WJTL 1370 Atlanta, Ga.
 WJW 1210 Akron, Ohio
 WJZ 760 New York, N. Y.
 WKAQ 1240 San Juan, Puerto Rico
 WKAR 1040 East Lansing, Mich.
 WKBB 1500 East Dubuque, Ill.
 WKBF 1400 Indianapolis, Ind.
 WKBH 1380 La Crosse, Wis.
 WKBI 1420 Cicero, Ill.
 WKBN 570 Youngstown, Ohio
 WKBO 1200 Harrisburg, Pa.
 WKBV 1500 Richmond, Ind.
 WKBW 1480 Buffalo, N. Y.
 WKBZ 1500 Ludington, Mich.
 WKEU 1500 Lagrange, Ga.
 WKFI 1210 Greenwood, Miss.
 WKJC 1200 Lancaster, Pa.
 WKOK 1210 Sunbury, Pa.
 WKRC 550 Cincinnati, Ohio
 WKY 900 Oklahoma, Okla.
 WKZO 590 Kalamazoo, Mich.
 WLAC 1470 Nashville, Tenn.
 WLAP 1420 Lexington, Ky.
 WLB 1250 Minneapolis, Minn.
 WLBC 1310 Muncie, Ind.
 WLBF 1420 Kansas City, Kan.
 WLBL 900 Stevens Point, Wis.
 WLBW 1260 Erie, Pa.
 WLBZ 620 Bangor, Me.
 WLEU 1420 Erie, Pa.
 WLEY 1370 Lexington, Mass.
 WLIT 560 Philadelphia, Pa.
 WLNH 1310 Laconia, N. H.
 WLS 870 Chicago, Ill.
 WLTH 1400 Brooklyn, N. Y.
 WLVA 1370 Lynchburg, Va.
 WLW 700 Cincinnati, Ohio
 WLWL 1100 New York, N. Y.
 WMAL 630 Washington, D. C.
 WMAQ 670 Chicago, Ill.
 WMAZ 1420 Springfield, Mass.
 WMAZ 1180 Macon, Ga.
 WMBC 1420 Detroit, Mich.
 WMBD 1440 Peoria, Ill.
 WMBF 1300 Miami Beach, Fla.
 WMBG 1210 Richmond, Va.
 WMBH 1420 Joplin, Mo.

Call Kilocycles Location

WMBI 1080 Chicago, Ill.
 WMBO 1310 Auburn, N. Y.
 WMBQ 1500 Brooklyn, N. Y.
 WMBR 1370 Jacksonville, Fla.
 WMC 780 Memphis, Tenn.
 WMCA 570 New York, N. Y.
 WMEX 1500 Chelsea, Mass.
 WMMN 890 Fairmont, W. Va.
 WMPC 1200 Lapeer, Mich.
 WMT 600 Waterloo, Iowa
 WNAC 1230 Boston, Mass.
 WNAD 1010 Norman, Okla.
 WNAX 570 Yankton, S. D.
 WNBK 1500 Binghamton, N. Y.
 WNBH 1310 New Bedford, Mass.
 WNBO 1200 Silverhaven, Pa.
 WNBZ 1430 Memphis, Tenn.
 WNBW 1200 Carbondale, Pa.
 WNBX 1260 Springfield, Vt.
 WNBZ 1290 Saranac Lake, N. Y.
 WNEL 1290 San Juan, Puerto Rico
 WNEW 1250 Newark, N. J.
 WNOX 560 Knoxville, Tenn.
 WNRA 1420 Muscle Shoals City, Ala.
 WNYC 810 New York, N. Y.
 WOAI 1190 San Antonio, Tex.
 WOCL 1210 Jamestown, N. Y.
 WOI 640 Ames, Iowa
 WOKO 1430 Albany, N. Y.
 WOL 1310 Washington, D. C.
 WOMT 1210 Manitowoc, Wis.
 WOOD 1270 Grand Rapids, Mich.
 WOPI 1500 Bristol, Tenn.
 WOQ 1300 Kansas City, Mo.
 WOR 710 Newark, N. J.
 WORC 1280 Worcester, Mass.
 WORK 1000 York, Pa.
 WOS 630 Jefferson City, Mo.
 WOSU 570 Columbus, Ohio
 WOV 1130 New York, N. Y.
 WOW 590 Omaha, Nebr.
 WOWO 1160 Fort Wayne, Ind.
 WPAD 1420 Paducah, Ky.
 WPEN 1500 Philadelphia, Pa.
 WPFB 1370 Hattiesburg, Miss.
 WPG 1100 Atlantic City, N. J.
 WPHR 1200 Petersburg, Va.
 WPRO 1210 Providence, R. I.
 WPTF 680 Raleigh, N. C.
 WQAM 560 Miami, Fla.
 WQAN 880 Scranton, Pa.
 WQBC 1360 Vicksburg, Miss.
 WQDM 1370 St. Albans, Vt.
 WQDX 1210 Thomasville, Ga.
 WRAK 1370 Williamsport, Pa.
 WRAW 1310 Reading, Pa.
 WRAX 1020 Philadelphia, Pa.
 WRBL 1200 Columbus, Ga.
 WRBX 1410 Roanoke, Va.
 WRC 950 Washington, D. C.
 WRDO 1370 Augusta, Me.
 WRDW 1500 Augusta, Ga.
 WREC 600 Memphis, Tenn.
 WREN 1220 Lawrence, Kan.
 WRGA 1500 Rome, Ga.
 WRHM 1250 Minneapolis, Minn.
 WRJN 1370 Racine, Wis.

(Continued on next page)

UNITED STATES BROADCAST STATIONS

| Call | Kilocycles | Location | Call | Kilocycles | Location | Call | Kilocycles | Location | Call | Kilocycles | Location |
|--|------------|--------------------|------|------------|----------------------|------|------------|--------------------|------|------------|------------------|
| <i>(Continued from preceding page)</i> | | | | | | | | | | | |
| WROK | 1410 | Rockford, Ill. | WSEN | 1210 | Columbus, Ohio | WSYB | 1500 | Rutland, Vt. | WTJS | 1310 | Jackson, Tenn. |
| WROL | 1310 | Knoxville, Tenn. | WSFA | 1410 | Montgomery, Ala. | WSYR | 570 | Syracuse, N. Y. | WTMJ | 620 | Milwaukee, Wis. |
| WRR | 1280 | Dallas, Tex. | WSGN | 1310 | Birmingham, Ala. | WTAD | 1440 | Quincy, Ill. | WTNJ | 1280 | Trenton, N. J. |
| WRUF | 830 | Gainesville, Fla. | WSIX | 1210 | Springfield, Tenn. | WTAG | 580 | Worcester, Mass. | WTOC | 1260 | Savannah, Ga. |
| WRVA | 1110 | Richmond, Va. | WSJS | 1310 | Winston-Salem, N.C. | WTAM | 1070 | Cleveland, Ohio | WTRC | 1310 | Elkhart, Ind. |
| WSAI | 1330 | Cincinnati, Ohio | WSM | 650 | Nashville, Tenn. | WTAQ | 1330 | Eau Claire, Wis. | WVFW | 1400 | Brooklyn, N. Y. |
| WSAJ | 1310 | Grove City, Pa. | WSMB | 1320 | New Orleans, La. | WTAR | 780 | Norfolk, Va. | WWAE | 1200 | Hammond, Ind. |
| WSAN | 1440 | Allentown, Pa. | WSMK | 1380 | Dayton, Ohio | WTAW | 1120 | College St'n, Tex. | WWJ | 920 | Detroit, Mich. |
| WSAR | 1450 | Fall River, Mass. | WSOC | 1210 | Charlotte, N. C. | WTAX | 1210 | Springfield, Ill. | WWL | 850 | New Orleans, La. |
| WSAZ | 1190 | Huntington, W. Va. | WSPA | 1420 | Spartanburg, S. C. | WTBO | 1420 | Cumberland, Md. | WWNC | 570 | Asheville, N. C. |
| WSB | 740 | Atlanta, Ga. | WSPD | 1340 | Toledo, Ohio | WTEL | 1310 | Philadelphia, Pa. | WWRL | 1500 | Woodside, N. Y. |
| WSBC | 1210 | Chicago, Ill. | WSUI | 880 | Iowa City, Iowa | WTFI | 1450 | Athens, Ga. | WWSW | 1500 | Pittsburgh, Pa. |
| WSBT | 1230 | South Bend, Ind. | WSUN | 620 | St. Petersburg, Fla. | WTIC | 1040 | Hartford, Conn. | WWVA | 1160 | Wheeling, W. Va. |
| | | | WSVS | 1370 | Buffalo, N. Y. | | | | WXYZ | 1240 | Detroit, Mich. |

CANADIAN BROADCAST STATIONS

| Call | Kilocycles | Location | Call | Kilocycles | Location | Call | Kilocycles | Location | Call | Kilocycles | Location |
|------|------------|-------------------------|------|------------|-------------------------|------|------------|----------------------|------|------------|----------------------|
| CFAC | 930 | Calgary, Alta. | CHCK | 1310 | Charlottetown, P. E. I. | CJKL | 1310 | Kirkland Lk., Ont. | CKLW | 840 | Windsor, Ont. |
| CFBO | 1210 | St. John, N. B. | CHGS | 1120 | Summerside, P. E. I. | CJLS | 1310 | Yarmouth, N. S. | CKMC | 1210 | Cobalt, Ont. |
| CFCF | 600 | Montreal, Que. | CHLP | 1120 | Montreal, Que. | CJOC | 840 | Lethbridge, Alta. | CKMO | 1410 | Vancouver, B. C. |
| CFCH | 930 | North Bay, Ont. | CHML | 1010 | Hamilton, Ont. | CJOR | 600 | Vancouver, B. C. | CKNC | 1030 | Toronto, Ont. |
| CFCN | 1030 | Calgary, Alta. | CHNC | 1210 | New Carlisle, Que. | CJRC | 1390 | Winnipeg, Man. | CKOC | 1120 | Hamilton, Ont. |
| CFCO | 600 | Chatham, Ont. | CHNS | 1050 | Halifax, N. S. | CJRM | 540 | Moose Jaw, Sask. | CKOV | 1210 | Kelowna, B. C. |
| CFCT | 1450 | Victoria, B. C. | CHPR | 1370 | St. John, N. B. | CKAC | 730 | Montreal, Que. | CKPC | 930 | Preston, Ont. |
| CFCY | 630 | Charlottetown, P. E. I. | CHRC | 580 | Quebec, Que. | CKBI | 1210 | Prince Albert, Sask. | CKPR | 930 | Fort William, Ont. |
| CFJC | 1310 | Kamloops, B. C. | CHSJ | 1370 | St. John, N. B. | CKCD | 1010 | Vancouver, B. C. | CKTB | 1200 | St. Catherines, Ont. |
| CFLC | 930 | Prescott, Ont. | CHWC | 1010 | Regina, Sask. | CKCH | 1210 | Hull, Que. | CKUA | 580 | Edmonton, Alta. |
| CFNB | 1030 | Fredericton, N. B. | CHWK | 780 | Chilliwack, B. C. | CKCK | 1010 | Regina, Sask. | CKWX | 1010 | Vancouver, B. C. |
| CFPL | 730 | London, Ont. | CJAT | 1200 | Trail, B. C. | CKCL | 580 | Toronto, Ont. | CKXK | 1450 | Brandon, Man. |
| CFQC | 1230 | Saskatoon, Sask. | CJCA | 730 | Edmonton, Alta. | CKCO | 1010 | Ottawa, Ont. | CKY | 780 | Winnipeg, Man. |
| CFRB | 690 | Toronto, Ont. | CJCB | 880 | Sydney, N. S. | CKCR | 1510 | Waterloo, Ont. | CRCM | 910 | Montreal, Que. |
| CFRC | 1510 | Kingston, Ont. | CJCF | 690 | Calgary, Alta. | CKCV | 1310 | Quebec, Que. | CRCO | 880 | Ottawa, Ont. |
| CFTP | 1260 | Edmonton, Alta. | CJCS | 780 | Sudbury, Ont. | CKFC | 1410 | Vancouver, B. C. | CRCS | 1500 | Chicoutimi, Que. |
| CHAB | 1200 | Moose Jaw, Sask. | CJGX | 630 | Yorkton, Sask. | CKGB | 1420 | Timmins, Ont. | CRCT | 960 | Toronto, Ont. |
| | | | | | | CKIC | 1010 | Wolfville, N. S. | CRCV | 1100 | Vancouver, B. C. |

MEXICAN BROADCAST STATIONS

| Call | Kilocycles | Location | Call | Kilocycles | Location | Call | Kilocycles | Location | Call | Kilocycles | Location |
|------|------------|---------------------------|------|------------|--------------------|------|------------|-----------------------|------|------------|---------------------|
| XEA | 1200 | Guadalajara, Jal. | XEFA | 1180 | Mexico City, D. F. | XEMC | 750 | Merida, Yuc. | XETZ | 850 | Mexico City |
| XEAB | 1210 | Nuevo Laredo, Tams. | XEFB | 1420 | Monterrey, N. L. | XEMO | 860 | Tijuana, L. C. | XEU | 1200 | Vera Cruz, Ver. |
| XEAC | 1295 | San Luis Potosi, S. L. P. | XEFC | 1310 | Merida, Yuc. | XEMZ | 1210 | Tijuana, L. C. | XEW | 890 | Mexico City, D. F. |
| XEAE | 980 | Tijuana, L. C. | XEFE | 1370 | Laredo, Tams. | XEN | 710 | Mexico City, D. F. | XEWZ | 1200 | Mexico City, D. F. |
| XEAF | 1080 | Nogales, Son. | XEFG | 1040 | Mexico City, D. F. | XENT | 1340 | Nuevo Laredo, Tams. | XEX | 1310 | Mexico City, D. F. |
| XEAI | 1420 | Mexico City, D. F. | XEFI | 720 | Chihuahua, Chih. | XEOK | 920 | Tijuana, B. C. | XEY | 1200 | Merida, Yuc. |
| XEAL | 660 | Mexico City, D. F. | XEFJ | 1210 | Monterrey, N. L. | XEOX | 640 | Saltillo, Coah. | XEYZ | 780 | Mexico City, D. F. |
| XEAO | 660 | Mexicali, L. C. | XEFO | 940 | Mexico City, D. F. | XEP | 970 | Mexico City, D. F. | XEZ | 630 | Merida, Yuc. |
| XEAW | 950 | Reynosa, Tams. | XEFV | 1210 | Juarez, Chih. | XEPN | 590 | Piedras Negras, Coah. | XEZZ | 1370 | San Luis Potosi |
| XEAZ | 1420 | Leon, Guan. | XEFW | 1310 | Tampico, Tams. | | | | XFA | 1310 | Agua Caliente |
| XEB | 1010 | Mexico City, D. F. | XEFZ | 1370 | Mexico City, D. F. | XEPR | 740 | Mexico City, D. F. | XFB | 1290 | Jalapa, Ver. |
| XEBC | 1280 | Agua Caliente, L. C. | XEH | 1130 | Monterrey, N. L. | XES | 970 | Tampico, Tams. | XFC | 810 | Agua Caliente, Ags. |
| XEC | 1200 | Toluca, D. F. | XEI | 1310 | Morelia, Mch. | XET | 690 | Monterrey, N. L. | XFD | 1240 | Orizaba, Ver. |
| XECW | 1310 | Mexico City, D. F. | XEJ | 1020 | Juarez, Chih. | XETB | 1310 | Torreón, Coah. | XFG | 688.3 | Mexico City, D. F. |
| XED | 1160 | Guadalajara, Jal. | XEK | 1120 | Mexico City, D. F. | XETH | 1210 | Puebla, Pue. | XFO | 940 | Mexico City, D. F. |
| XEE | 1210 | Durango, Dgo. | XEL | 1370 | Saltillo, Coah. | XETU | 890 | Pachuca, Hdgo. | AFX | 610 | Mexico City, D. F. |
| | | | XEMA | 1200 | Tampico, Tams. | XETW | 820 | Mexico City, D. F. | | | |

Only

STEWART-WARNER RADIO



The Round-the-World Radio of Proved Performance

An exclusive Stewart-Warner feature, The "Magic Dial" really gives you 4 radios in one. By a simple adjustment you click into place the dial you want to use—one for standard American broadcasts; one for amateur, airplane and police calls; one for ships at sea and South America; one for all other foreign stations. "Geared tuning" makes short-wave selection as easy as local!

There is a Stewart-Warner Round-the-World Radio to fit any purse and to enhance the beauty of any decorative scheme—from smart, compact table models to consoles which are beautiful pieces of furniture as well as a source of endless entertainment, culture, useful information. Compare Stewart-Warner quality and prices with all others—and judge for yourself.



Gives You the Amazing



*Easiest to Tune World Wide Dial on
the Market. Really 4 Radios in One*

● Why gamble when buying a Round-the-World Radio? Stewart-Warner, the pioneers in simplified all-wave radio, offer you in today's "Magic Dial," these benefits of their extra years of experience: (1) Simplicity of clear, accurate tuning—even for the most distant foreign stations—never before possible at *any* price! (2) Remarkably low prices. Stewart-Warner has had time to bring all-wave radio to simplified, economical efficiency.

Foreign Reception Guaranteed

Why limit your pleasure to only American programs, when now you can have entertainment from all over the world—so easily and for so little? But don't expect "Magic Dial" results from anything but the new Stewart-Warner Radio. And don't let the new low prices prejudice you. The best foreign reception possible in your locality is positively guaranteed by Stewart-Warner.

