

darryl worley
"nothin' but a love thang" **Come to the Party May 15th!**



Morreale Goes National For Show Dog

Show Dog Southeast regional **Tony Morreale** has been promoted to National Promotion Director. Morreale will continue to report to VP/Promotion **Denise Roberts** in his new national role. Before joining the label last year, Morreale worked the Southeast region for BNA Records, where he started in 1997. Prior stops include Evelyn Shriver Public Relations and CBS Records. "Tony is a proven winner," Roberts says. "His professional skills and attitude make him a natural choice for this position."

Sony/Nashville Fades; Sony BMG Emerges

Last week's (4/19) news that Sony BMG would be combining its RCA Label Group and Sony Music Nashville labels was, perhaps, an inevitability set in motion by the 2003 merger of BMG and Sony. At the time, the notion that the two Nashville divisions would stand intact was a pleasant surprise, which perhaps contributed to the sense of abruptness in last week's announcement.

As reported in an **R&R** Breaking News Update, CEO **Rolf Schmidt-Holtz** issued a memo to Sony BMG employees that the company was "combining the resources of its two Nashville operations in order to create a single powerhouse entity, which will be known as Sony BMG Nashville."

The departure of Sony/Nashville President **John Grady** was soon confirmed, and as the days have passed a sense of the magnitude of the change for country

music and the industry has settled. Sony/Nashville, with imprints Columbia and Epic still thriving, traces its country roots back to the 1940s and a producer and Columbia executive named Don Law — now a member of the Country Music Hall of Fame.

Columbia purchased Owen Bradley's Quonset Hut Studio in 1962, eventually building its offices in the same location. Those were the days when country music meant Bradley's Decca, Chet Atkins' RCA, Ken Nelson's Capitol, and Law's Columbia. Just a very few of the artists connected to the Columbia legacy are Bob Wills, Little Jimmy Dickens, Lefty Frizzell, Ray Price, Johnny Cash, Tammy Wynette and George Jones. In some sense, last week's news closed a long and illustrious chapter in country music as a corporate culture and artistic lineage fade into the history books.

The world keeps turning, however, and newly appointed Sony BMG/Nashville Chairman Joe Galante now steers what is unquestionably the most dominant, catalog-rich label group in Nashville. Speculation about changes is rampant and likely premature at this point, but **R&R** has learned that Sony/Nashville VP/Finance **Jeff Allen** (jeff.allen@sonybm.com) will be leaving the company. He'll stay on for six-to-eight weeks to assist in the financial transition between the two companies. Allen joined Sony/Nashville in January 1995 after three years with Capitol, where he was also VP/Finance.

'Lonestar 1190' Pops The Top In The Big D

First Broadcasting's KFXR/Dallas has been playing 1,000 commercial-free songs in a row since an-

If you experienced transmission problems ... please call our Circulation Department at 310-788-1625.

© 2006 Radio & Records. All Rights Reserved. No part of this material may be reproduced in any form or incorporated in any information retrieval system without written permission of the Publisher.

"ANYWHERE BUT HERE"

The new single from

CHRIS CAGLE

Already spinning at:

KAJA	KRTY	KHKI
KIXZ	KZSN	WOKO
KSKS	WYPY	KRYS
WITL	WFBE	WKCN

Going for Immediate Airplay



WWW.CAPITOLNASHVILLE.COM WWW.CHRISCAGLE.COM



“SWING”

THE FIRST GRAND SLAM OF THE SEASON!!

TRACE ADKINS

ADD DATE: 5/15

The new single from Trace's upcoming album *Dangerous Man!*

On your desk *NOW* and available via Promo Only



www.capitolnashville.com
www.traceadkins.com



nouncing its relaunch in February. Now that the music sweep has come to an end, the new "Lonestar 1190" has emerged with a lineup of the syndicated **Moby in the Morning**, First Broadcasting Group PD **John Roberts** in middays and "Fast" **Eddie Coyle** in afternoons.

Four To Perform At CRS/LV

The Country Radio Broadcasters have set four artists to perform at the CRS/Las Vegas one-day seminar set for Monday, May 22 at the MGM Grand hotel.

Lyric Street's **Sarah Buxton**, Show Dog Nashville's **Scotty Emerick**, Mercury's **Gary Nichols** and Rust's **Shane Owens** will all perform during the event, which features two sessions: "That's Hot," a panel discussing Country's top 10 hot topics, and "CRS Storytellers," featuring some of the industry's finest recalling their challenges and triumphs. The registration fee for CRS/Las Vegas is \$125, until May 5, 2006. On-site registration to the event is \$150, and registration includes a ticket to the ACM New Artist show on Monday, May 22.

Carl P. Debuts on Sirius' Road Dog Trucking Radio

Nashville radio vet **Carl P. Mayfield** debuted yesterday as the PM driver on the satcaster's trucker-oriented channel (No. 147). During his inaugural show, Mayfield introduced legendary artist **Charlie Daniels** as the official "voice" of Road Dog Trucking, with his classic driving song "Road Dogs" also unveiled as the channel's theme song.

As part of the deal, Daniels will make personal appearances throughout the year at various trucking industry events. Joining Mayfield as producer/newsman is long-time broadcast partner **Mike "The Duke" Donegan**.

Also launching yesterday on Sirius Channel 147 was *Hammerdown Radio* with DJ **RigRocker**, the *nom de aire* of Road Dog Trucking PD **Jeremy Tepper**.

Road Dog Trucking is a 24-hour channel geared toward professional drivers and is devoted entirely to

trucking culture. It features news, information, entertainment, music, original talk shows, comedy and live call-ins from drivers nationwide.

Street Talk

Following a reported "blow-up" over TV show performers and performances at last week's Academy of Country Music Board of Directors meeting, a highly ranked Universal Music Group/Nashville executive has confirmed the company will boycott the event and send no promotion staffers to Las Vegas. There are also reports that some UMG artists will follow suit, although nothing has been confirmed at this point.

Radio News

Programming: KTST/Oklahoma City Asst. PD/MD/morning co-host **Anthony Allen** has resigned and is opening Anthony Allen Productions, with a focus on video production and graphics. His last day is Friday, after which you can reach him at 405-408-6964. Clear Channel/OKC Director/Programming **Tom Travis** will handle KTST's MD duties while also looking for a new partner to join morning co-host **Kathi Yeager**.

WXTU/Philadelphia Programming Coordinator **Roy Land** has been promoted to Asst. PD. Land has been with the station for six years. PD **Bob McKay** is handling MD duties previously held by Cadillac Jack, who left the station in February.

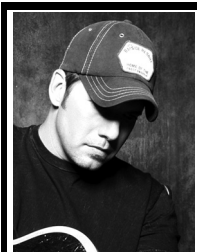
Music: KAGG/Bryan-College Station, TX PD/MD **Jennifer Allen** is going on maternity leave. Asst. PD **Chris Austin** will serve as MD in Allen's absence.

Personalities: **Kelly Montana** has joined WFBE (B95)/Flint, MI for on-air/production/promotions duties.

Fred Imus, brother of Don, will host a Saturday-morning air shift on Sirius Satellite Radio's Outlaw Country channel.

If you experienced transmission problems ... please call our Circulation Department at 310-788-1625.

© 2006 Radio & Records. All Rights Reserved. No part of this material may be reproduced in any form or incorporated in any information retrieval system without written permission of the Publisher.



Rodney Atkins "If You're Going Through Hell"

New adds:

**KZLA, KSSN, WKKT, WROO,
WCOS, WDXB, WSLC**

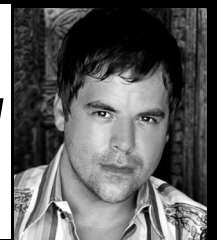
16 New Conversions this week!!!!

RR: **26** to **23** +224

BB: **26** to **23** 2.1 Mil. Aud

CURB
RADIO & RECORDS
curb.com

Steve Holy "Brand New Girlfriend"



Big Adds:

**WUSN, KSCS, WMIL, KWJJ,
WCTK, WESC, WKCN**

Huge Local Callout!!!

RR: **42** to **39**

BB: **43** to **41**

Artist News

Congrats to Lyric Street and **Rascal Flatts** on second-week sales of 345,000 copies for *Me and My Gang*, pushing the album over the 1 million sales mark. Congrats are also in order for **Toby Keith** and Show Dog Nashville on opening with 330,000 debut-week sales for *White Trash With Money*.

The RIAA has issued a gold certification for **Alan Jackson's** *Precious Memories*. The album is a collection of gospel standards Jackson originally recorded for his mother.

Tim McGraw and **Faith Hill** opened their Soul2Soul II Tour over the weekend with two sold-out shows in Columbus, OH. The tour has sold 875,000 tickets thus far.

Curb recording artists **Bomshel** have signed with the William Morris Agency for booking.

Industry-Honors Deadlines

Two top industry awards are in the process of accepting entries and/or nominations right now.

The CMA is accepting entries for the 2006 Station of the Year and Broadcast Personality of the Year awards through June 29. Details at www.broadcast.cmaawards.com.

Additionally, there is a new, simplified nomination process for the Country Music DJ and Country Radio Halls of Fame. Go to www.crb.org for more information. The 2007 induction ceremony is set for Feb. 27, the night prior to CRS 2007 kick-off.

Chart Chat

So, did ya' ever think you'd live to see the day that **Jon Bon Jovi** had the No. 1 song on the Country chart? Granted, he had more than a little help from **Sugarland's Jennifer Nettles**. But still — Bon Jovi? Congrats to UMG/Nashville Exec. VP/Promotion **Bill Catino**, Mercury VP **John Ettinger** and their merry band on this amazing feat.

This Week In R&R

More than any other employee on Music Row, the Artists & Repertoire staffer stands dead center in the dangerous intersection of art and commerce. As part of R&R's A&R Executive Spotlight, the Nashville bureau interviewed four top A&R decisionmakers about the issues, challenges and trends they navigate on a daily basis. Check out this week's Country column for an illuminating look at the work done by these music business traffic cops.


This is not the first time, however, that Catino was involved in taking a star from another format and delivering an unlikely No. 1 Country record. The first time he turned that trick was back in March 1977, when **Tom Jones** — yes, *that* Tom Jones — hit No. 1 with "Say You'll Stay Until Tomorrow." Catino contends he had Jones on the road visiting Country morning shows and cajoling PDs into "just giving it a shot" in mornings. I was on the air at WMAQ/Chicago back then, and remember it was a *huge* hit.

All that led me to wonder what other songs by pop/rock stars have topped or hit the top 10 in the Country charts through the years. Many of the hits were duets. International superstar **Julio Iglesias** joined Willie Nelson for "To All The Girls I've Loved Before" for an April 1984 two-week chart topper. **Lionel Richie** teamed with Alabama for the top 10 hit "Deep River Woman" in Dec. 1986.

As for solo efforts, **Bonnie Tyler** hit No. 7 with "It's A Heartache" in June 1978 and **Roy Orbison** notched a No. 7 smash with "You Got It" in April 1989. I also recall playing **Englebert Humperdink's** "After The Lovin'" in Chicago in 1976. And although it was before R&R's time,


If you experienced transmission problems ... please call our Circulation Department at 310-788-1625.

© 2006 Radio & Records. All Rights Reserved. No part of this material may be reproduced in any form or incorporated in any information retrieval system without written permission of the Publisher.



WATCH HER PERFORM "NEW STRINGS" ON THE ACM TELECAST
R&R Debut 43 / BB 53* - 45*
Triple Digit Spin Increases On Both Charts!

Among the most added for a 3rd week in a Row!
17 New Believers This Week: K102, KFRG, WMIL, KRYG, WSOC, WIVK, WROO, WGKX, KRST, KVOO, KDRK, KEGA, WYPY, WBAM, WDXB, WGNA, WPKX!



Miranda is ready to explode to the next level... Be a part of it THIS WEEK!

Sony Music NASHVILLE

June Pointer's recent passing reminded me that **The Pointer Sisters** had a top 15 hit in 1973 with "Fairytale," a song that went on to win a Country Grammy for the act. It also landed the sisters a spot on the Grand Ole Opry in 1976.

I now return you to the current charts.

Industry News

The press and publicists credential deadline for the 41st annual ACM Awards is Tuesday, May 2. Contact **Brooke Primero** at 310-854-4800 or via e-mail at bprimero@bncpr.com for details.

The Grand Ole Opry's next Signature Series show will feature **The Gaither Vocal Band, Jeff and Sheri Easter** and **The Crabb Family** on July 15. One hour of the *Grand Ole Gospel* show will air on GAC.

Former BMI VP/Writer-Publisher Relations **Paul Corbin** can be reached at corbmar@bellsouth.net. Corbin exited the organization last week.

Life Notes

Congrats to WRWD/Poughkeepsie, NY PD and afternoon host **Justin Tyler** and his wife, **Tricia**, on the April 18 birth of son **Brady Dillon**, the couple's second child.

Chronicle

Capricorn Records Founder **Phil Walden**, credited with launching the careers of **Otis Redding**, the **Allman Brothers Band** and, in Nashville, **Kenny Chesney**, died Sunday after an extended battle with cancer. He was 66. Walden founded the Macon, GA-based Capricorn Record Series as an imprint of Atlantic Records in 1969. Capricorn became its own label in 1971 and was at the forefront of the Southern rock sound before going out of business in 1982. Walden relaunched the label in Nashville as a joint venture with Warner Bros. in 1990, working with artists including 311, Cake and pre-BNA Chesney.

Rick Rockhill worked for Walden when Capricorn was relaunched in Nashville. "Phil Walden was truly an important man and powerful influence on a lot of people," Rockhill says. "He made a huge impact on the music industry. He touched a lot of lives in a lot of different ways. He was the most colorful man I've ever had the opportunity to work for and be around. I loved him a lot and I'm very sad to see him go. I wish I had gotten to see him one last time to tell him I loved him and how much he meant to me. I'm glad our paths crossed for a little while. God bless Phil Walden — he was a class act."

Condolences to country artist and *Nashville Star* winner **Buddy Jewell** on the April 20 passing of his father, Buddy Jewell Sr., after a long battle with diabetes. The family asks that in lieu of flowers, donations may be made to American Diabetes Association, P.O. Box 1131, Fairfax, VA 22038-1131.

The Week In Review

Below are some of the major stories that first appeared in the **R&R Country Daily**. Get it by sending your name, company or call letters, job title, address, phone and fax numbers to subscribe@radioandrecords.com. For more on these stories, visit the Country Format Room at www.radioandrecords.com.

R&R Country Daily, Friday, April 21: Steve Stephenson was named GM of Max Media's eight radio stations in the Paducah-Cape Girardeau-Harrisburg, MO market, including Country KEZS. A 20-year broadcast veteran, Stephenson most recently served as VP/Market Manager for Border Media Partners' six-station San Antonio cluster. He began his new duties yesterday, replacing the exiting **Carla Leible**.

If you experienced transmission problems ... please call our Circulation Department at 310-788-1625.

© 2006 Radio & Records. All Rights Reserved. No part of this material may be reproduced in any form or incorporated in any information retrieval system without written permission of the Publisher.

"ON AGAIN TONIGHT"

The New Columbia Hit From

TRENT WILLMON

R&R 31

BB 31*

+703,700 (15% Audience Increase!!!)

New Believers ON Today: WKIS, WYGY, WROO, WTNR, WRBT & WFRE!

BIG Spinners: WUSN 20; KTYS 97; KSCS 30; KPLX 25; KEEY 16; KBEQ 26; WGKX 24; WGGY 22; KXKT 17; KTOM 17; KBKO 19; WNKT 23; KJUG 17; KRYS 28; KFTX 25

Callout?

Trent tests 4th out of 30 songs at the Twister in Dallas!

Columbia Records Believes In This Cowboy!



Mark Hanson was named VP/GM of NextMedia's five Decatur, IL stations, including Country WZDQ. He began his new duties on April 18 and replaces **Joel Fletcher**, who exited in January. A 25-year broadcasting vet, Hanson most recently served as GM of Triad Broadcasting's Tallahassee, FL cluster.

Veteran Country programmer and personality **John Malone** is the new 6-11am ET personality for Jones Radio Networks' Classic Hit Country channel. He succeeds the retiring **Bill Western**, who has hosted the show since 1997. Malone lives in Huntsville, AL and will do the show from there. Malone programmed WSM-AM/Nashville from 1999 to 2002. He also worked at WSM-AM as a personality in the 1980s. Malone also spent a number of years in Huntsville radio as a programmer and personality at WAHR and WRSA.

RRCD, April 20: Renda/Ft. Myers Director/Sales **Walt Tiburski** has been promoted to Market Manager of the four-station cluster, which includes Country WWGR. He replaces **Kelley McGrath**, who is joining Genesis Communications as EVP and is relocating to Orlando. Tiburski spent many years in Cleveland radio as both an executive and owner. He joined Renda in late 2005.

RRCD, April 19: CMT's **Laurissa Ryan** has been promoted to Director/Music & Talent Development. Ryan started with CMT in 1999.

Reba McEntire and tour sponsor Whirlpool are partnering to build a block of Habitat for Humanity homes in Nashville from Nov. 4-11. Ten houses will be built with a \$1 million donation from Whirlpool, which is one of Habitat for Humanity's biggest corporate supporters.

RRCD, April 18: Citadel/Nashville OM and WKDF PD **Dave Kelly** has been promoted to Market Manager/OM for the company's pair of Music City stations, which also includes Sports/Talk WGFX (The Zone).

Citadel President/Southeast **John King** said of Kelly, "Over the years that I have had the pleasure of knowing and working with Dave, I have watched his rapid growth

Dates & Deadlines

May 5: Early-bird Registration Deadline, CRS-LV. Details at www.crb.org.

May 22: CRB Las Vegas. Details at www.crb.org.

May 23: 41st annual ACM Awards, Las Vegas. Details at www.acmcountry.com.

June 8-11: CMA Music Festival, Nashville. Details at www.cmafest.com.

Sept 20-22: R&R Convention, Dallas. Details at www.radioandrecords.com.

professionally. He has clearly demonstrated his radio management expertise and knowledge, and led by example with his desire and drive to win and get the job done."

Kelly was named WKDF PD in May 2001 and was upped to OM in June 2002. Before that he spent a year with R&R marketing Music Meeting. He's also enjoyed a five-year stint as PD of WSIX/Nashville.

Hank Williams Jr., Brooks & Dunn and **Lynyrd Skynyrd** will headline the June 8 Coliseum show opening this year's CMA Music Festival in Nashville. **Gary Allan, Sara Evans** and **Blake Shelton** are also on the bill.

DVD sales for the television series *Hee Haw* recently topped 1 million. Time Life markets and distributes the DVDs under license from Gaylord Entertainment, which owns the series.

Gary Allan will join the summer leg of **Rascal Flatts'** Me and My Gang Tour, which opens May 26 in Holmdel, NJ.

— **Lon Helton/Country Editor** (615) 244-8822
Email: lhelton@radioandrecords.com

— **Chuck Aly/R&R Asst. Country Editor** 615-244-8822
Email: caly@radioandrecords.com

If you experienced transmission problems ... please call our Circulation Department at 310-788-1625.

© 2006 Radio & Records. All Rights Reserved. No part of this material may be reproduced in any form or incorporated in any information retrieval system without written permission of the Publisher.



...Over 650M Impressions & Counting...

...Nominated For ACM Vocal Duo Of The Year...

...On The Redneck Revolution Tour With Gretchen Wilson...

Columbia Records Presents The New Single

"THINGS I MISS THE MOST"

WKHX, KEGA, KSOP, WGKX, KTOM,
KDRK, KBKO, KKCS, KFTX &
WKCN In & Spinning HARD.

"Already HUGE early test numbers!"

- Brian Driver, WNKT/Charleston, Spinning VZ POWER

AIRPLAY NOW. COLUMBIA RECORDS BELIEVES IN VAN ZANT.



MUSIC NOTES

◀ The GAC and *Country Weekly* fan-voted Country's All-Time Greats promotion has concluded. The winners are: Male Vocalist, **George Strait**; Female, **Reba McEntire**; Duo/Group, **Alabama**; Song, "He Stopped Loving Her Today" by **George Jones**; and Album, *A Lot About Livin' (And A Little 'Bout Love)* by **Alan Jackson**.

◀ Big Machine recording artist **Taylor Swift** will be the subject of a short-form documentary series on GAC, starting May 1. The network will profile the 16-year-old high school student and aspiring country performer in three one-minute vignettes that will air over the course of one hour. In all, the series will include 50 of these three-in-one episodes, for a total of 150 separate clips. Swift's first single goes to radio in June, and her debut album is scheduled for September.

VIDEO ADDS

CMT

BRAD PAISLEY The World
CRAIG MORGAN I Got You
JOSH GRACIN Favorite State Of Mind
JULIE ROBERTS Men & Mascara
SHOOTER JENNINGS Gone To Carolina

GREAT AMERICAN COUNTRY

BIG & RICH Nevermind Me
BRAD PAISLEY The World
DANIELLE PECK Findin' A Good Man
DARRYL WORLEY Nothin' But A Love Thang
DIAMOND RIO God Only Cries
JOE NICHOLS Size Matters
JOSH GRACIN Favorite State Of Mind
RONNIE MILSAP Local Girls
TIM MCGRAW When The Stars Go Blue

RANDOM FAX®

Tuesday, 4/25

BIRTHDAYS: Rob Crosby, April Rider (*arider@curb.com*), Suzette Tucker, Meredith Hupp (*mhupp@radioandrecords.com*), John King (*john.king@citcomm.com*)

On TV: USA: Trace Adkins, *Nashville Star*; Syndicated: Kenny Rogers, *Ellen*.

Wednesday, 4/26

BIRTHDAYS: Jay DeMarcus (Rascal Flatts), Duane Eddy, Monte Warden, Alan Brewer, Jeff Huskins

Thursday, 4/27

BIRTHDAYS: Herb Pederson, Michael McNamara

On TV: CBS: Emmylou Harris, *The Late Show With David Letterman*; FOX: Blake Shelton, *Fox & Friends*.

Saturday, 4/29

BIRTHDAYS: Duane Allen, Stephanie Bentley-Prouitt, James Bonamy, Beverlee Brannigan (*bbrannigan@kfdi.com*), Rosie Fitchpatrick, Lisa Kosty, Debby Turpin (*debby@ksopcountry.com*)

On TV: GAC: Vince Gill (host), Montgomery Gentry, Susan Haynes, The Crabb Family, *Grand Ole Opry Live!*

Sunday, 4/30

BIRTHDAYS: Willie Nelson, Robert Reynolds, Tyler Wilkinson, Steve Amari, Dana Burwell (*goasst2@wma.com*), Chuck Rhodes

On TV: CMT: Shania Twain, *CMT Greatest Moments: Shania Twain*.

Monday, 5/1

BIRTHDAYS: Helen Darling, Ilene Berns, Carrie Long, Louie Newman (*louie.newman@umusic.com*), Tanya Welch (*tanya.welch@sonybm.com*)

On TV: GAC: Phil Vassar, *Piano Man In A Guitar Town*.

If you experienced transmission problems ... please call our Circulation Department at 310-788-1625.

© 2006 Radio & Records. All Rights Reserved. No part of this material may be reproduced in any form or incorporated in any information retrieval system without written permission of the Publisher.

Rockie Lynne "Do We Still"

Impacting and Reacting with real country listeners on 5/1!

Album hits the stores May 2nd. Be a part of real life....



Here are the guys that are trying **Cross Canadian Ragweed!**

WBCT/Grand Rapids...WNKT/Charleston...WIRK/West Palm Beach...KSKS/Fresno...KHKI/Des Moines...WITL/Lansing...

KYGO/Denver...KBQI/Albuquerque...KIXZ/Spokane...KDRK/Spokane...KTOM/Monterey...KUBL/Salt Lake City...

KKBQ/Houston...KPLX/Dallas...KTYS/Dallas...WYPY/Baton Rouge...WIVK/Knoxville

Only you can prevent hit records!

LW	TW	ARTIST Title Label(s)	Total Points	+/- Points	Total Plays	+/- Plays	Tot. Aud. (00)	+/- Aud. (00)	Wks On	Total Station
2	1	BON JOVI W/J. NETTLES Who Says You Can't ... (Mercury/IDJMG)	13602	-19	4712	+45	402756	737	20	120/0
1	2	RASCAL FLATTS What Hurts The Most (Lyric Street)	13429	-339	4641	-167	398100	-11699	16	123/0
5	3	JASON ALDEAN Why (BBR)	11958	1270	4187	+455	341166	26130	21	123/0
7	4	JACK INGRAM Wherever You Are (Big Machine)	11096	958	3795	+384	315974	23622	23	123/0
8	5	FAITH HILL The Lucky One (Warner Bros.)	10771	851	3718	+301	304957	18257	11	123/0
10	6	DIERKS BENTLEY Settle For A Slowdown (Capitol)	10236	888	3535	+324	301311	31631	15	123/0
11	7	LEANN RIMES Something's Gotta Give (Asylum/Curb)	9989	676	3514	+293	288492	19289	17	123/0
6	8	BROOKS & DUNN Believe (Arista)	9848	-380	3549	-65	267897	-18484	25	122/0
12	9	TIM MCGRAW When The Stars Go Blue (Curb)	9105	608	3126	+250	258390	15062	8	121/1
3	10	TOBY KEITH Get Drunk And ... (Show Dog Nashville/Universal)	9011	-2993	2994	-1035	247626	-91514	17	122/0
15	11	PHIL VASSAR Last Day Of My Life (Arista)	8231	883	2725	+319	232927	34100	12	120/0
13	12	JOE NICHOLS Size Matters (Someday) (Universal South)	8083	248	2817	+87	221588	13316	14	121/0
14	13	GEORGE STRAIT Seashores Of Old Mexico (MCA)	8026	435	2765	+124	226202	18222	11	122/1
19	14	KENNY CHESNEY Summertime (BNA)	7183	1952	2398	+698	209319	47080	4	120/3
16	15	KEITH ANDERSON Every Time I Hear Your Name (Arista)	7161	349	2505	+140	190517	14249	16	121/1
17	16	BRAD PAISLEY The World (Arista)	6945	755	2386	+274	186238	17899	6	122/3
20	17	CARRIE UNDERWOOD Don't Forget To Remember Me (Arista)	6215	1362	2050	+484	175331	37235	7	119/1
18	18	CRAIG MORGAN I Got You (BBR)	6001	456	2277	+154	152818	6994	19	113/0
22	19	GARY ALLAN Life Ain't Always Beautiful (MCA)	4924	481	1801	+173	123335	17135	14	118/4
23	20	GRETCHEN WILSON Politically Uncorrect (Epic)	4505	190	1650	+108	105624	4878	11	112/1
24	21	LITTLE BIG TOWN Bring It On Home (Equity)	4307	179	1505	+47	113528	11509	12	105/4
25	22	KENNY ROGERS I Can't Unlove You (Capitol)	4131	286	1427	+129	99281	7543	16	100/2
26	23	RODNEY ATKINS If You're Going Through Hell ... (Curb)	4107	731	1507	+224	102593	21043	15	103/7
27	24	ERIC CHURCH How 'Bout You (Capitol)	3520	174	1189	+50	89832	6290	10	100/9
29	25	SUGARLAND Down In Mississippi (Up To No Good) (Mercury)	3098	385	1048	+80	82694	16414	7	85/4

© 2006 Radio & Records

BLAINE LARSEN

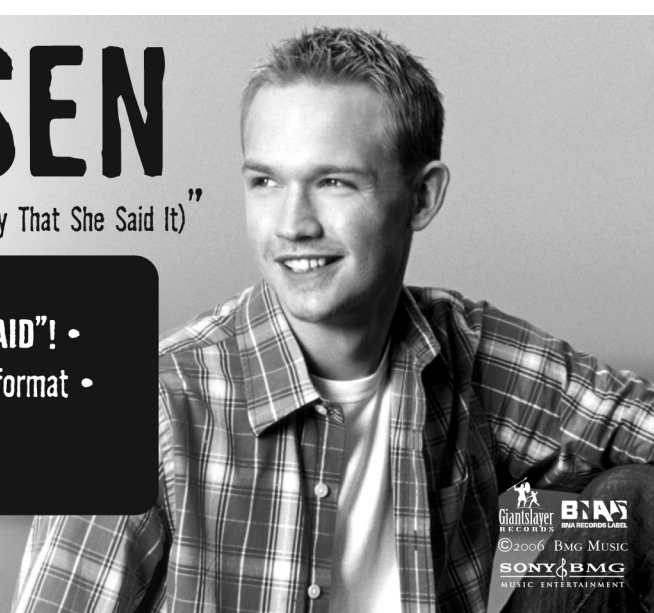
"I Don't Know What She Said (But I Sure Like The Way That She Said It)"

34• R&R 39• BB

- NOW OVER 70 STATIONS FIGURING OUT "WHAT SHE SAID"!
 - TOP 5 nationwide call-out at ABC Radio's "Real Country" format
- CONSISTENT CHART-GROWTH EVERY WEEK**

"blah, blah, blah..."

YOUR TURN TO ADD IT THIS WEEK!



©2006 BMG MUSIC

LW	TW	ARTIST	Title	Label(s)	Total Points	+/- Points	Total Plays	+/- Plays	Tot. Aud. (00)	+/- Aud. (00)	Wks On	Total Station
28	26	BILLY CURRINGTON	Why, Why, Why	(Mercury)	3081	144	1130	+46	76134	5964	8	100/2
Breaker	27	RASCAL FLATTS	Me And My Gang	(Lyric Street)	2788	2071	925	+706	85244	62991	2	100/33
30	28	JAKE OWEN	Yee Haw	(RCA)	2720	227	1030	+98	64018	6803	8	89/4
32	29	JOSH GRACIN	Favorite State Of Mind	(Lyric Street)	2561	217	908	+66	59669	7856	7	92/5
44	30	TOBY KEITH	A Little Too Late	(Show Dog Nashville/Universal)	2338	1352	794	+494	69022	49095	2	103/27
33	31	TRENT WILLMON	On Again Tonight	(Columbia)	2331	185	789	+86	60346	8358	10	69/5
34	32	BIG & RICH	Never Mind Me	(Warner Bros.)	1904	-78	617	-28	43875	-3216	12	67/0
39	33	WRECKERS	Leave The Pieces	(Maverick/Warner Bros.)	1735	494	607	+153	31915	6158	3	72/9
36	34	BLAINE LARSEN	I Don't Know What She Said	(Giantslayer/BNA)	1698	201	609	+54	40268	5005	8	64/4
35	35	MEGAN MULLINS	Ain't What It Used To Be	(BBR)	1627	117	603	+52	34201	128	7	73/3
37	36	NEAL MCCOY	The Last Of A Dying Breed	(903)	1584	153	518	+54	34229	2526	9	53/3
43	37	GARTH BROOKS	That Girl Is A Cowboy	(Pearl/Lyric Street)	1447	372	507	+134	38060	10053	3	52/9
38	38	DANIELLE PECK	Findin' A Good Man	(Big Machine)	1434	178	553	+65	29871	2933	5	69/9
42	39	STEVE HOLY	Brand New Girlfriend	(Curb)	1302	193	495	+47	32163	5734	11	47/5
40	40	HANK WILLIAMS, JR.	That's How They Do It In Dixie	(Curb/Asylum)	1206	1	519	0	24603	2575	8	57/2
41	41	DIXIE CHICKS	Not Ready To Make Nice	(Open Wide/Columbia)	1014	-141	282	-47	26876	-3888	6	22/0
45	42	ASHLEY MONROE	Satisfied	(Columbia)	838	-92	281	-36	18711	-1498	5	40/3
Debut	43	MIRANDA LAMBERT	New Strings	(Epic)	785	298	314	+102	15509	5452	1	52/15
Debut	44	SCOTTY EMERICK	What's Up With That	(Show Dog Nashville)	728	187	267	+53	9793	1292	1	30/0
47	45	BOMSHEL	It Was An Absolutely Finger Lickin', Grits And ...	(Curb)	651	-28	299	-1	11371	-1844	4	41/1
50	46	DIAMOND RIO	God Only Cries	(Arista)	645	33	270	+13	13743	478	2	50/9
49	47	JOHN CORBETT	Good To Go	(Fun Bone)	531	-96	158	-41	12867	-259	8	34/0
Debut	48	EMERSON DRIVE	A Good Man	(Midas)	499	42	231	+9	9024	395	1	33/2
Debut	49	RAY SCOTT	Gone Either Way	(Warner Bros.)	472	18	208	+16	7292	143	1	31/1
-	50	CROSS CANADIAN RAGWEED	This Time Around	(Universal South)	460	32	131	+24	11385	411	2	16/1

© 2006 Radio & Records

“An amazing story that keeps on surprising us! Phones are up. Stories are up. Requests are up... and SPINS are up to 31 times a week in only 3 weeks! This is one of my biggest records this year.”

Clayton Allen, KAJA



New Adds: WYCD, WIVK, WGNE, KTEX, WBCT, WGTY, WEZL, KXKC, KIZN, KQFC, KJUG

DIAMOND RIO
“Kill Me Now”



© 2006 Radio & Records

COUNTRY

MOST ADDED

ARTIST Title Label(s)	Adds
JOSH TURNER Would You Go With Me (MCA)	36
RASCAL FLATTS Me And My Gang (Lyric Street)	33
TOBY KEITH A Little Too Late (Show Dog Nashville/Universal)	27
GARY NICHOLS Unbroken Ground (Mercury)	19
SARA EVANS Coalmine (RCA)	18
MIRANDA LAMBERT New Strings (Epic)	15
RIO GRAND Kill Me Now (Curb/Asylum)	12

MOST INCREASED POINTS

ARTIST Title Label(s)	Total Pt. Increase
RASCAL FLATTS Me And My Gang (Lyric Street)	+2071
KENNY CHESNEY Summertime (BNA)	+1952
CARRIE UNDERWOOD Don't Forget To Remember Me (Arista)	+1362
TOBY KEITH A Little Too Late (Show Dog Nashville/Universal)	+1352
JASON ALDEAN Why (BBR)	+1270
JACK INGRAM Wherever You Are (Big Machine)	+958
DIERKS BENTLEY Settle For A Slowdown (Capitol)	+888
PHIL VASSAR Last Day Of My Life (Arista)	+883
FAITH HILL The Lucky One (Warner Bros.)	+851
BRAD PAISLEY The World (Arista)	+755

MOST INCREASED PLAYS

ARTIST Title Label(s)	Total Play Increase
RASCAL FLATTS Me And My Gang (Lyric Street)	+706
KENNY CHESNEY Summertime (BNA)	+698
TOBY KEITH A Little Too Late (Show Dog Nashville/Universal)	+494
CARRIE UNDERWOOD Don't Forget To Remember Me (Arista)	+484
JASON ALDEAN Why (BBR)	+455
JACK INGRAM Wherever You Are (Big Machine)	+384
DIERKS BENTLEY Settle For A Slowdown (Capitol)	+324
PHIL VASSAR Last Day Of My Life (Arista)	+319
FAITH HILL The Lucky One (Warner Bros.)	+301
LEANN RIMES Something's Gotta Give (Asylum/Curb)	+293

COUNTRY INDICATOR

MOST ADDED

ARTIST Title Label(s)	Adds
RASCAL FLATTS Me And My Gang (Lyric Street)	40
TOBY KEITH A Little Too Late (Show Dog Nashville/Universal)	31
GARTH BROOKS That Girl Is A Cowboy (Pearl/Lyric Street)	12
JOSH TURNER Would You Go With Me (MCA)	12
MIRANDA LAMBERT New Strings (Epic)	10
CHRIS CAGLE Anywhere But Here (Capitol)	8
GARY NICHOLS Unbroken Ground (Mercury)	8
WRECKERS Leave The Pieces (Maverick/Warner Bros.)	7
DANIELLE PECK Findin' A Good Man (Big Machine)	7
TRACE ADKINS Swing (Capitol)	7

MOST INCREASED POINTS

ARTIST Title Label(s)	Total Pt. Increase
RASCAL FLATTS Me And My Gang (Lyric Street)	+759
KENNY CHESNEY Summertime (BNA)	+662
TOBY KEITH A Little Too Late (Show Dog Nashville/Universal)	+587
CARRIE UNDERWOOD Don't Forget To Remember Me (Arista)	+419
JACK INGRAM Wherever You Are (Big Machine)	+316
BRAD PAISLEY The World (Arista)	+304
TIM MCGRAW When The Stars Go Blue (Curb)	+302
JASON ALDEAN Why (BBR)	+299
DIERKS BENTLEY Settle For A Slowdown (Capitol)	+294
FAITH HILL The Lucky One (Warner Bros.)	+254

MOST INCREASED PLAYS

ARTIST Title Label(s)	Total Play Increase
RASCAL FLATTS Me And My Gang (Lyric Street)	+601
KENNY CHESNEY Summertime (BNA)	+512
TOBY KEITH A Little Too Late (Show Dog Nashville/Universal)	+497
CARRIE UNDERWOOD Don't Forget To Remember Me (Arista)	+332
DIERKS BENTLEY Settle For A Slowdown (Capitol)	+265
BRAD PAISLEY The World (Arista)	+262
JACK INGRAM Wherever You Are (Big Machine)	+250
TIM MCGRAW When The Stars Go Blue (Curb)	+250
JASON ALDEAN Why (BBR)	+222
LITTLE BIG TOWN Bring It On Home (Equity)	+210

WATCH GRETCHEN PERFORM "POLITICALLY UNCORRECT" ON THE ACM TELECAST

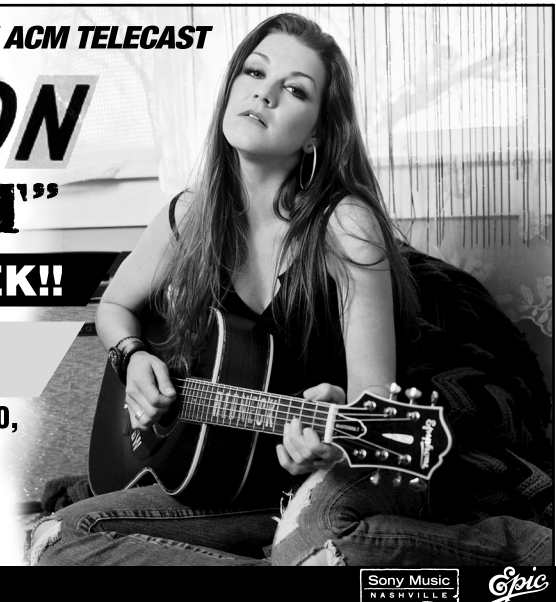
GRETCHEN WILSON
"POLITICALLY UNCORRECT"

KAJA BECOMES A BELIEVER THIS WEEK!!

R&R: 20 BB: 24*

20+ spinners: WBEE 23, WCAT 25, WCTK 22, WFRE 20, WIOV 22, WSLC 30, WWYZ 21, WESC 22, WIRK 21, WKIS 31, WNKT 21, WQYK 20, WSOC 20, WWGR 22, WXBW 22, KFTX 23, KKCS 25, KVOO 23, WUSJ 28, KATM 20, KIIM 22, KJUG 23, KRTY 21, KTOM 23, KUZZ 23, KBEQ 25, WGKX 28, WITL 24, WKDF 25, WMUS 23, WQHK 20, WTNR 24, WWQM 31, WYGY 25

Move It Up & Watch It Work For You!



Sony Music NASHVILLE



COUNTRY INDICATOR NEW & ACTIVE

DIAMOND RIO God Only Cries (*Arista*)
Total Points: 165, Total Stations: 15, Adds: 1
JOHN CORBETT Good To Go (*Fun Bone*)
Total Points: 159, Total Stations: 13, Adds: 0
EMERSON DRIVE A Good Man (*Midas*)
Total Points: 156, Total Stations: 14, Adds: 1
RIO GRAND Kill Me Now (*Curb/Asylum*)
Total Points: 120, Total Stations: 13, Adds: 6
CRAIG HAND Direct Connect (*Category 5*)
Total Points: 119, Total Stations: 12, Adds: 0
CHRIS CAGLE Anywhere But Here (*Capitol*)
Total Points: 116, Total Stations: 11, Adds: 8
RYAN SHUPE & THE RUBBERBAND Banjo Boy (*Capitol*)
Total Points: 116, Total Stations: 11, Adds: 0
SCOTTY EMERICK What's Up With That (*Show Dog Nashville*)
Total Points: 103, Total Stations: 7, Adds: 0

MARK WILLS Hank (*Equity*)
Total Points: 101, Total Stations: 9, Adds: 4
HOT APPLE PIE Easy Does It (*MCA*)
Total Points: 91, Total Stations: 9, Adds: 0

COUNTRY NEW & ACTIVE

RONNIE MILSAP Local Girls (*RCA/RLG*)
Total Points: 431, Total Stations: 22, Adds: 1
SARA EVANS Coalmine (*RCA*)
Total Points: 381, Total Stations: 33, Adds: 18
CAROLINA RAIN Get Outta My Way (*Equity*)
Total Points: 380, Total Stations: 26, Adds: 1
LOST TRAILERS Call Me Crazy (*BNA*)
Total Points: 368, Total Stations: 28, Adds: 4
MARK WILLS Hank (*Equity*)
Total Points: 346, Total Stations: 20, Adds: 6
JOSH TURNER Would You Go With Me (*MCA*)
Total Points: 315, Total Stations: 43, Adds: 36
RIO GRAND Kill Me Now (*Curb/Asylum*)
Total Points: 277, Total Stations: 27, Adds: 12
JULIE ROBERTS Men & Mascara (*Mercury*)
Total Points: 271, Total Stations: 18, Adds: 1
RYAN SHUPE & THE RUBBERBAND Banjo Boy (*Capitol*)
Total Points: 166, Total Stations: 12, Adds: 0
VAN ZANT Things I Miss The Most (*Columbia*)
Total Points: 161, Total Stations: 19, Adds: 6

R&R Going For Adds

5/1
KATE RUSSELL Powerful Stuff (*Urunga/Quarterback*)
ROCKIE LYNNE Do We Still (*Universal South*)
SAMMY KERSHAW Tennessee Girl (*Category 5*)

5/8
DOUG STONE Let The Light Shine On You (*Lofton Creek*)
JOE PATRICK I'll Know When I Get There (*CharTunes*)

5/15
CHEREE SILCOX In His Dreams (*MY*)
DARRYL WORLEY Nothin' But A Love Thang (*903*)
SHEDAISY In Terms Of Love (*Lyric Street*)
TRACE ADKINS Swing (*Capitol*)

MOST PLAYED RECURRENTS

ARTIST Title Label(s)	Total Points
KEITH URBAN Tonight I Wanna Cry (<i>Capitol</i>)	8303
JOSH TURNER Your Man (<i>MCA</i>)	8225
BLAKE SHELTON Nobody But Me (<i>Warner Bros.</i>)	7945
KENNY CHESNEY Living In Fast Forward (<i>BNA</i>)	6629
BRAD PAISLEY f/DOLLY PARTON When I Get Where I'm Going (<i>Arista</i>)	6559
MONTGOMERY GENTRY She Don't Tell Me To (<i>Columbia</i>)	6432
CARRIE UNDERWOOD Jesus, Take The Wheel (<i>Arista</i>)	6372
BILLY CURRINGTON Must Be Doin' Somethin' Right (<i>Mercury</i>)	5736
TRACE ADKINS Honky Tonk Badonkadonk (<i>Capitol</i>)	4254
MONTGOMERY GENTRY Something To Be Proud Of (<i>Columbia</i>)	3982

POWERED BY MEDIABASE 123 Country reporters. Songs ranked by total points for the airplay week of 4/16-4/22. Bullets appear on songs gaining points and/or plays or remaining flat from previous week. If two songs are tied in total points, the song with the larger increase in points is placed first. Songs below No. 1 and down in points and plays for three consecutive weeks are moved to recurrent. Most Added is the total number of new adds officially reported to R&R by each reporting station. Songs unreported as adds do not count toward overall total stations playing a song. Most Increased Points lists the songs with the greatest week-to-week increases in total points. Station Weight = AQH Persons + (Market rank X 10) divided by the highest AQH Persons of all Country reporters. As of fall 2005, WUSN/Chicago has the highest AQH, which is 42,500. Total Audience equals Average Quarter Hour Persons times number of plays (times 100). Each daypart on each station is assigned an AQH number. Average Quarter Hour Persons used herein with permission from Arbitron Inc. (© 2006, Arbitron Inc.) © 2006 Radio & Records.

#1 BOUND!

JASON "WHY" ALDEAN

Whatever you want... We have it all!

BIGGEST Point & Play Increase in R&R Top 10 for 2 weeks in a row!

BIG RESEARCH:

- #4 Adults All Ages (Rate the Music)
- #4 Adults All Ages (MediaBase)
- #4 Females All Ages (MediaBase)

BIG VISIBILITY:

CMT Awards, CMT Top 20 Countdown, ACM's, Late Late Show with Craig Ferguson... Jason gets his 2nd #1 VIDEO this week on CMT Top 20 Countdown!

The record that has continuously performed like a #1 record... Deserves MAXIMUM SPINS!!!!!!

She's ONE of Only TWO New Solo Female Acts in the Top 35!

Megan Mullins

"Ain't What It Used To Be"

4 MORE HUGE ADDS: WSIX, KEGA, WBBS, WKCQ

REAL Spin Increases... NO spin games here!

BBR

You Want TOP 10 Research? We GOT It!

CRAIG MORGAN

"I Got You"

TOP 10 RESEARCH EVERYWHERE:

- #1 Males All Ages (MediaBase)
- #4 Adults 25-34 (MediaBase)
- #5 Females 25-34 (MediaBase)
- #6 Adults All Ages (MediaBase)
- #9 Females All Ages (MediaBase)
- #9 Females All Ages (Rate the Music)

Great Rusty Walker & Callout America Trends too!! WATCH for Craig's Hot New VIDEO World Premiere On CMT this week!!

CONVERT CRAIG NOW!

April 25, 2006

LW	TW	ARTIST Title Label(s)	Total Points	+/- Points	Total Plays	+/- Plays	Tot. Aud. (00)	+/- Aud. (00)	Wks On	Total Station
2	1	BON JOVI W/J. NETTLES Who Says You Can't ... (Mercury/IDJMG)	4488	77	3521	+69	15785	756	19	91/1
3	2	JASON ALDEAN Why (BBR)	4380	299	3435	+222	12042	1395	21	97/0
5	3	JACK INGRAM Wherever You Are (Big Machine)	4078	316	3249	+250	10654	535	23	98/0
1	4	RASCAL FLATTS What Hurts The Most (Lyric Street)	4027	-607	3087	-520	14198	-1012	16	88/0
6	5	FAITH HILL The Lucky One (Warner Bros.)	3984	254	3118	+198	10960	854	11	98/0
8	6	DIERKS BENTLEY Settle For A Slowdown (Capitol)	3828	294	3075	+265	10214	518	15	96/0
9	7	LEANN RIMES Something's Gotta Give (Asylum/Curb)	3662	161	2884	+143	10110	751	17	95/0
12	8	TIM MCGRAW When The Stars Go Blue (Curb)	3463	302	2727	+250	9272	1051	8	97/0
13	9	JOE NICHOLS Size Matters (Someday) (Universal South)	3317	230	2634	+208	9665	1875	14	95/0
14	10	GEORGE STRAIT Seashores Of Old Mexico (MCA)	3168	155	2538	+129	8996	646	12	94/2
16	11	BRAD PAISLEY The World (Arista)	2946	304	2338	+262	7215	1012	6	96/0
15	12	PHIL VASSAR Last Day Of My Life (Arista)	2945	209	2343	+141	6285	509	13	92/2
17	13	CRAIG MORGAN I Got You (BBR)	2804	181	2192	+131	6374	57	20	92/0
18	14	KEITH ANDERSON Every Time I Hear Your Name (Arista)	2735	147	2153	+93	5912	236	16	90/1
4	15	TOBY KEITH Get Drunk And ... (Show Dog Nashville/Universal)	2674	-1232	2112	-957	8146	-2661	17	72/0
10	16	BLAKE SHELTON Nobody But Me (Warner Bros.)	2659	-604	2159	-478	7808	-2284	34	75/0
22	17	KENNY CHESNEY Summertime (BNA)	2623	662	2061	+512	5713	1679	5	97/4
23	18	CARRIE UNDERWOOD Don't Forget To Remember Me (Arista)	2322	419	1886	+332	4895	1085	5	96/1
20	19	GARY ALLAN Life Ain't Always Beautiful (MCA)	2278	121	1810	+101	5449	-4	15	86/0
21	20	GRETCHEN WILSON Politically Uncorrect (Epic)	2029	10	1655	+1	4565	210	11	88/1
25	21	LITTLE BIG TOWN Bring It On Home (Equity)	1794	247	1451	+210	3613	373	13	82/6
26	22	KENNY ROGERS I Can't Unlove You (Capitol)	1700	179	1364	+146	3568	186	17	74/1
27	23	RODNEY ATKINS If You're Going Through Hell ... (Curb)	1679	251	1337	+190	3615	1265	15	71/4
29	24	BILLY CURRINGTON Why, Why, Why (Mercury)	1494	199	1195	+161	3254	694	9	81/3
30	25	SUGARLAND Down In Mississippi (Up To No Good) (Mercury)	1472	234	1208	+191	2681	848	7	78/3

© 2006 Radio & Records

Emerson Drive
 "A Good Man"
R&R Debut 48
Airplay Now!

Already On: WQMX, KBQI, WGNE, WMIL, KSOP, KYGO, WFMS, KUBL, KEGA, KWNR, WYCD, KSD, KSON, WGKX, WGAR, WGGY, KJUG, KTOM, WWQM, KDRK, KATM, KQFC, KIZN, WWGR, KXKT, KNCL, KHKI, KSKS, WBEE, KIXZ, KZSN, WCOL, WQDR, WNCY, WKCO, WKCN & WOKQ!

MIDAS RECORDS
 NASHVILLE

April 25, 2006

LW	TW	ARTIST Title Label(s)	Total Points	+/- Points	Total Plays	+/- Plays	Tot. Aud. (00)	+/- Aud. (00)	Wks On	Total Station
28	26	ERIC CHURCH How 'Bout You (Capitol)	1376	40	1111	+41	2805	-208	9	69/1
39	27	TOBY KEITH A Little Too Late (Show Dog Nashville/Universal)	1118	587	889	+497	1748	709	2	72/31
31	28	JOSH GRACIN Favorite State Of Mind (Lyric Street)	1080	84	861	+76	2071	286	9	67/3
45	29	RASCAL FLATTS Me And My Gang (Lyric Street)	1052	759	822	+601	1533	1273	2	70/40
34	30	NEAL MCCOY The Last Of A Dying Breed (903)	983	69	779	+51	1405	164	15	59/1
32	31	BIG & RICH Never Mind Me (Warner Bros.)	892	-68	708	-44	1455	-65	13	53/1
37	32	WRECKERS Leave The Pieces (Maverick/Warner Bros.)	891	242	727	+193	1326	622	4	66/7
36	33	GARTH BROOKS That Girl Is A Cowboy (Pearl/Lyric Street)	850	146	720	+131	1406	599	3	62/12
35	34	JAKE OWEN Yee Haw (RCA)	824	104	663	+77	1575	326	8	49/3
24	35	SHEDAISY I'm Taking The Wheel (Lyric Street)	737	-884	539	-743	1901	-1170	22	41/0
38	36	HANK WILLIAMS, JR. That's How They Do It In Dixie (Curb/Asylum)	621	13	464	+13	1214	14	9	40/1
41	37	DANIELLE PECK Findin' A Good Man (Big Machine)	598	121	486	+97	826	121	8	45/7
33	38	JAMIE O'NEAL I Love My Life (Capitol)	572	-366	423	-322	1345	-667	20	37/0
40	39	TRENT WILLMON On Again Tonight (Columbia)	571	83	474	+74	677	-54	10	40/4
42	40	SARA EVANS Coalmine (RCA)	543	135	451	+107	862	328	3	39/5
44	41	MIRANDA LAMBERT New Strings (Epic)	459	165	358	+125	580	245	2	39/10
43	42	ASHLEY MONROE Satisfied (Columbia)	352	0	260	-3	956	13	5	28/2
Debut	43	JOSH TURNER Would You Go With Me (MCA)	347	191	266	+153	845	323	1	25/12
47	44	MEGAN MULLINS Ain't What It Used To Be (BBR)	320	52	263	+37	525	108	5	29/5
46	45	BLAINE LARSEN I Don't Know What She Said (Giantslayer/BNA)	286	13	247	+12	814	-49	9	24/2
48	46	BOMSHEL It Was An Absolutely Finger Lickin', Grits And ... (Curb)	274	12	239	+16	458	-55	6	23/1
Debut	47	VAN ZANT Things I Miss The Most (Columbia)	242	52	193	+47	449	-13	1	24/4
Debut	48	RAY SCOTT Gone Either Way (Warner Bros.)	217	41	176	+25	438	48	1	23/4
Debut	49	STEVE HOLY Brand New Girlfriend (Curb)	185	0	164	+1	359	57	1	18/1
Debut	50	JULIE ROBERTS Men & Mascara (Mercury)	183	14	153	+10	385	-1	1	16/1

© 2006 Radio & Records

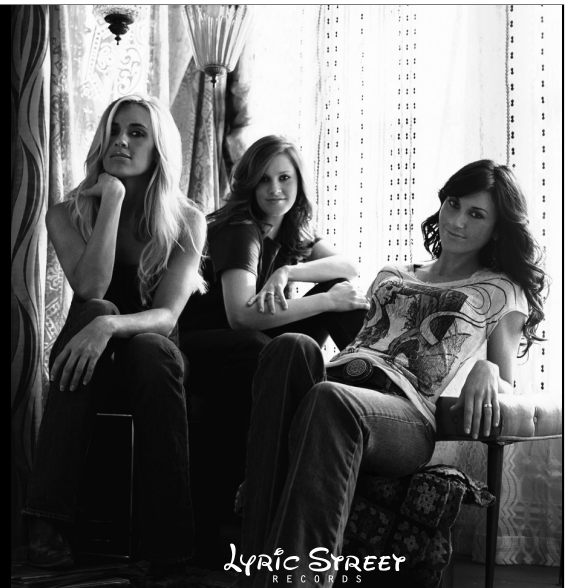


"In Terms OF Love"

NEW SINGLE ON YOUR DESK THIS WEEK...

DIGITAL DELIVERY TODAY @ 12NOON CENTRAL

Available for Immediate SPINS!





Artist Title (Label)	TW	LW	Fam.	Burn	P 25-54	W 25-54	M 25-54
RASCAL FLATTS What Hurts The Most (Lyric Street)	4.23	4.20	98%	23%	4.26	4.28	4.22
BLAKE SHELTON Nobody But Me (Warner Bros.)	4.20	4.22	95%	22%	4.18	4.25	4.09
DIERKS BENTLEY Settle For A Slowdown (Capitol)	4.15	4.11	90%	13%	4.12	4.18	4.04
JASON ALDEAN Why (BBR)	4.13	4.15	89%	12%	4.10	4.11	4.10
BRAD PAISLEY The World (Arista)	4.13	4.14	71%	6%	4.08	4.07	4.09
MONTGOMERY GENTRY She Don't Tell Me To (Columbia)	4.12	4.00	98%	26%	4.13	4.20	4.01
PHIL VASSAR Last Day Of My Life (Arista)	4.10	4.01	87%	11%	4.12	4.18	4.03
KEITH ANDERSON Every Time I Hear Your Name (Arista)	4.09	4.13	80%	9%	4.03	4.05	3.99
CRAIG MORGAN I Got You (BBR)	4.07	4.02	80%	13%	4.01	4.06	3.95
GARY ALLAN Life Ain't Always Beautiful (MCA)	4.06	4.09	83%	12%	4.06	4.11	3.97
BON JOVI W/JENNIFER NETTLES Who Says You Can't Go Home (Mercury/IDJMG)	4.05	3.95	98%	33%	4.07	4.07	4.07
KEITH URBAN Tonight I Wanna Cry (Capitol)	4.05	4.04	97%	31%	4.10	4.16	3.99
BROOKS & DUNN Believe (Arista)	4.03	4.03	98%	33%	4.08	4.15	3.98
KENNY CHESNEY Summertime (BNA)	4.03	-	72%	11%	4.05	4.10	3.98
CARRIE UNDERWOOD Don't Forget To Remember Me (Arista)	4.00	-	70%	11%	4.01	3.91	4.17
RODNEY ATKINS If You're Going Through Hell (Before The Devil Even Knows) (Curb)	3.99	3.99	51%	7%	3.96	3.96	3.97
LEANN RIMES Something's Gotta Give (Asylum/Curb)	3.97	3.97	92%	21%	3.93	3.92	3.94
TOBY KEITH Get Drunk And Be Somebody (Show Dog Nashville/Universal)	3.96	3.75	98%	26%	3.93	3.77	4.17
JOE NICHOLS Size Matters (Someday) (Universal South)	3.96	3.92	90%	14%	3.92	3.97	3.84
JACK INGRAM Wherever You Are (Big Machine)	3.93	3.92	92%	20%	3.94	3.97	3.90
GEORGE STRAIT Seashores Of Old Mexico (MCA)	3.92	3.92	89%	19%	3.98	3.88	4.12
KENNY ROGERS I Can't Unlove You (Capitol)	3.85	3.81	80%	13%	3.86	3.82	3.92
LITTLE BIG TOWN Bring It On Home (Equity)	3.85	3.91	62%	8%	3.79	3.70	3.92
TIM MCGRAW When The Stars Go Blue (Curb)	3.79	3.72	86%	18%	3.82	3.96	3.63
BILLY CURRINGTON Why, Why, Why (Mercury)	3.78	-	60%	9%	3.75	3.87	3.54
FAITH HILL The Lucky One (Warner Bros.)	3.77	3.68	89%	22%	3.80	3.75	3.88
JAMIE O'NEAL I Love My Life (Capitol)	3.76	3.72	52%	9%	3.74	3.74	3.74
ERIC CHURCH How 'Bout You (Capitol)	3.76	3.73	50%	8%	3.73	3.75	3.69
GRETCHEN WILSON Politically Uncorrect (Epic)	3.67	3.58	85%	22%	3.68	3.53	3.89

Total sample size is 332 respondents. Total average favorability estimates are based on a scale of 1-5. (1=dislike very much, 5 = like very much). Total familiarity represents the percentage of respondents who recognized the song. Total burn represents the number of respondents who said they are tired of hearing the song. Songs must have 40% familiarity to appear on survey. Sample composition is based on persons 12+. Persons are screened via the Internet. Once passed, they can take the music test based on the format/music preference. RateTheMusic.com results are not meant to replace callout research. The results are intended to show opinions of participants on the the Internet only. RateTheMusic is a registered trademark of RateTheMusic.com. The RTM system, is available for local radio stations by calling 818-377-5300. RateTheMusic.com data is provided by Mediabase Research, a division of Premiere Radio Networks.

If you experienced transmission problems ... please call our Circulation Department at 310-788-1625.

© 2006 Radio & Records. All Rights Reserved No part of this material may be reproduced in any form or incorporated in any information retrieval system without written permission of the Publisher.

FOLLOWING UP HIS 11 TOP 10 HITS, IT'S ANOTHER HIT FROM

Sammy Kershaw

"TENNESSEE GIRL"

ADDED IMMEDIATELY AT WYCD/DETROIT!

OFFICIAL ADD DATE (IF YOU CAN WAIT): MAY 1ST!

"A proven hit-maker is back on the radio with his distinctive Kershaw sound."

- Tim Roberts, PD, 99.5 WYCD/Detroit

