

Tequila is Highly Flammable...Joe Nichols is Blowin' Up!



CRB To Honor Dorsey, Yancy, Helton, Fricke, Salamon & Lameier

The Country Radio Broadcasters will induct **Terry Dorsey**, **Lon Helton** and **Arch Yancey** into the Country Music DJ Hall of Fame at its annual banquet, set for Feb. 14, 2006, on the eve of CRS-37. The same evening, **Jonathan Fricke** and **Ed Salamon** will be inducted into the Country Radio Hall of Fame, and record veteran **Jack Lameier** is set to receive the CRB's President's Award. Details at www.crb.org.

Dorsey has been a top morning air talent in Dallas since 1982, first with KPLX and then KSCS, after starting in Country radio at WONE/Dayton, OH in 1977. Before that, Dorsey spent 10 years on the pop side. He was named CMA Major Market Country Air Personality in 1986.

Helton has hosted Westwood One's *Country Countdown USA* since 1992, though his national broadcast career stretches back 10 years further. He got his start in Monmouth, IL in 1971, with stops in Galesburg, IL; Denver; Chicago; and eventually Los Angeles. He served three terms as CMA President and Chairman and was CMA's National Broadcast Personality of the Year in 2002 and 2004.

Yancey boasts a 30-year career on-air in Houston. He started in the business at WBIP/Booneville, MS, moving through several small localities, Memphis and Baton Rouge before arriving in Houston in 1957. His calls there included KNUZ (1958-1966), KIKK (1966-

1973), KNUZ (1973-1983) and KILT (1983-1989). He later became an owner of a station in Cordell, OK.

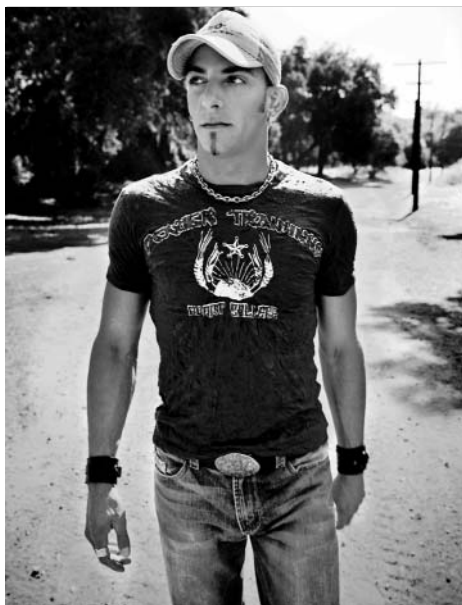
Fricke is known for flipping WMC/Memphis and WSAI/Cincinnati to Country. Other Country stops included KDJW/Amarillo, KBUY/Fort Worth and KOKE-AM & FM/Austin, TX; KFOX/Los Angeles; and KRAK/Sacramento. Fricke served on the CRS Agenda Committee for 12 years and is the founder of Radio Against Drugs In Our Society.

WHN/New York PD from 1975 to 1981, Salamon presided over the most-listened-to Country radio station of all time. Salamon's career began at WEEP-AM & FM/Pittsburgh in 1973. He co-founded United Stations Radio Networks with Dick Clark and Nick Verbitsky in 1981. USRN was consolidated into Westwood One, where Salamon served as President/Programming. He became CRB Exec. Director in 2002.

CRB's President bestows an award on an individual who has "made a significant contribution to the marketing, production, growth and development of the Country Radio Seminar and the multiple services that CRB provides to the Country radio and music communities." Lameier served on the CRB Board from 1989-1994, including a stint as its VP. He is the proprietor of Jack's Place Consulting, which he started after a 40-year career with Columbia/Sony, where he rose to Sr. VP/Promotion prior to his retirement.

If you experienced transmission problems ... please call our Circulation Department at 310-788-1625.

© 2005 Radio & Records. All Rights Reserved. No part of this material may be reproduced in any form or incorporated in any information retrieval system without written permission of the Publisher.



Trent Tomlinson

MOST ADDED!

"DRUNKER THAN ME" DEBUT 50

53 / 35

"It's a kick-butt, in your face tune that is rockin' country to the core." --Wes McShay, PD, WDAF/Kansas City

LYRIC STREEY
RECORDS



MONTGOMERY GENTRY

HAS SOMETHING TO BE PROUD OF

"SHE DON'T TELL ME TO"

PRODUCED BY RIVERS RUTHERFORD AND MARK WRIGHT

75 STATIONS ON - THE MOST
FIRST-WEEK ADDS OF THEIR CAREER

R&R/BB

44

THANKS
RADIO!

FROM THEIR UPCOMING COLUMBIA RELEASE

SOMETHING TO BE PROUD OF: THE BEST OF 1999-2005

IN STORES NOVEMBER 1

**THE FOLLOW UP TO THEIR PLATINUM
SELLING YOU DO YOUR THING**

**TO GET MONTGOMERY GENTRY'S SOMETHING TO BE PROUD OF RADIO SPECIAL
CONTACT BECKY ROBERTSON AT THE MARKETING GROUP 615-301-0001**



Sony Music
NASHVILLE

WWW.MONTGOMERYGENTRY.COM
WWW.SONYNASHVILLE.COM

Hansen Heads To Vegas

Journal Broadcast Group/Springfield, MO OM **Brad Hansen** has been named OM for Beasley/Las Vegas' trio of stations and PD of its recently-launched KYCE (104.3 The Coyote). He starts Nov. 7 and also oversees Classic Rock KKLZ and '80s formatted KSTJ. Hansen has spent the last five years with Journal/Springfield, MO. Prior to that he was PD of KLNC/Austin, and before that he was PD of both KASE & KVET/Austin. The Coyote is currently spinning 10,000 songs in a row, and Hansen and consultant **Joel Raab** (joelraab@aol.com) are looking for an airstaff.

Radio Withstands Wilma's Fury

Hurricane Wilma tore through Florida Monday, leaving six million people without power as it delivered 125 mph winds and dumped several inches of rain across the state.

Clear Channel/Ft. Myers VP/Market Manager Jim Keating told R&R's **Dana Hall** that the eye made landfall about 30 miles south of the cluster's headquarters. Staffers gathered at the station around midnight early Monday morning armed with supplies and sleeping bags. "We didn't need to set our alarm clocks," Keating said. "We knew exactly when the eye was coming through. Some of the wind bursts were amazing. We really felt it, but our building held up"

The group combined its stations, including Country WCKT, into one signal at 5am ET, running on backup power. "For the first hour we provided vital community information. After that, the staff took calls from listeners about local situations and neighborhood conditions. We went back to regular music programming with hourly updates at 10am," Keating said.

WKHX Trumpets Cornett For Mornings

Former KSD-FM (93.7 The Bull)/St. Louis morning personality **Craig Cornett** is the new wakeup personality

This Week At Callout America

Our weekly analysis of Country callout research is brought to you by Bullseye President John Hart. Here's a look at some of the biggest stories Hart looks at in next week's issue.

"In this week's sample, Montgomery Gentry's 'Something to Be Proud Of' continues as the No. 1 song overall and the No. 5 passion song for the week. Leann Rimes moves strong from No. 5 last week to No. 3 in this week's sample with 'Probably Wouldn't Be This Way.' The only new entry into the top 10 titles this week is Alan Jackson's 'USA Today,' which ranks No. 10. George Strait is comin' on strong, with 'She Let Herself Go' moving to No. 15 from last week's No. 18 and No. 24 two weeks ago. Big & Rich's 'Comin' to Your City' is out-of-the-box strong, ranking at No. 18 this week, up from No. 23."

at WKHX/Atlanta. He should be on the air in very early November and succeeds Bandy & Bailey, who left last Friday after failing to come to terms on a new contract. (Details below, under "Week In Review.") Cornett spent the last five years at KSD-FM. Prior to that he spent seven years at KYKY/St Louis and, before that, was at WMC-FM/Memphis. The Premiere Radio Networks-syndicated *Big D & Bubba* is KSD-FM's new morning show.

Roberts Returns To Motor City

Cumulus Media Midwest Regional OM **Tim Roberts** is returning to his hometown of Detroit to program Infinity Country WYCD. Roberts' programming background includes stints at KSAN & KNEW in San Francisco and WLVK/Charlotte. He programmed WWWW/Detroit from 1997-99 and became OM of Cumulus/Toledo in October 1999.

If you experienced transmission problems ... please call our Circulation Department at 310-788-1625.

© 2005 Radio & Records. All Rights Reserved. No part of this material may be reproduced in any form or incorporated in any information retrieval system without written permission of the Publisher.



What can "Brown" do for you???

Big Adds:

KNIX, WFMS, WTQR, WGKX, WWQM

Big Time Consistent Callout!

Sawyer Brown "They Don't Understand"

CURB
RECORDS
curb.com

He has been overseeing Cumulus' properties in Youngstown and Toledo, OH; Western Pennsylvania; and Southern Michigan. (Breaking News Alert to RRCD subscribers, Thursday 10/20.)

Bon Jovi, Paul Simon To CMAs

The latest round of performances at the 39th annual CMA Awards includes a one by **Bon Jovi** and Sugarland's **Jennifer Nettles** and one by **Willie Nelson** and **Paul Simon**, who will also present the Song of the Year award. **Alison Krauss & Union Station** will perform with **Jerry Douglas**, and Horizon nominees **Miranda Lambert** and **Julie Roberts** are also set to play. Actor **James Gandolfini** will present.

CMA Elects New Board; Sansone Chairman, Dungan President

Last week the Country Music Association elected a new Board of Directors and new leadership. ABC Radio Group/Atlanta President **Victor Sansone**, who has served as President of the Country Music Association for the last year, has been elected Chairman of the Board. Concurrently, Capitol/Nashville President/CEO **Mike Dungan** was elected President of the CMA. Artist manager **Clarence Spalding** is the new President-elect, while Equity Music Group's **Tim Wiperman** is the Secretary/Treasurer.

The new board includes Aristo Media's **Jeff Walker**, **Trace Adkins**, **Brad Paisley**, songwriter **Tim Nichols**, songwriter **Bob DiPiero**, **Asgard Promotions'** **Paul Fenn**, manager **Bruce Allen**, **Equity's Tim Wiperman**, Universal Publishing's **Pat Higdon**, manager **Clarence Spalding**, manager **Gary Borman**, consultant **Rusty Walker**, Clear Channel's **Alan Sledge**, Lyric Street's **Randy Goodman**, **Sony's John Grady**, Target's **Sue Peterson**, **BLA's Tony Conway**, Clear Channel Entertainment's **Brian O'Connell**, Eastern States Exposition's **John Juliano**, **Deaton**

Flanigen's Robert Deaton, **BMI's Paul Corbin**, **ASCAP's Connie Bradley**, **Anderson Merchandisers' Charlie Anderson**, **CC/Minneapolis' Mick Anselmo**, **Warner Bros.' Bill Bennett**, **KMPS/Seattle's Becky Brenner**, **Kix Brooks**, **Gaylord's Steve Buchanan**, **Universal South's Tim DuBois**, **Capitol's Mike Dungan**, **MBK's Kitty Moon Emery**, **Sara Evans**, manager **Larry Fitzgerald**, **Smith-Free Group's Jim Free**, **RCA Label Group's Joe Galante**, **The Gary Group's Dick Gary**, **Troy Gentry**, **Sirius' Scott Greenstein**, **GAC's Ed Hardy**, **R&R's Lon Helton**, manager **Clint Higham**, **CAA's John Huie**, producer **Dann Huff**, **Chevrolet's Kim Kosak**, manager **Ken Levitan**, **UMG's Luke Lewis**, **USA Today's Brian Mansfield**, **CC/San Antonio's Mark Mays**, **Moore Entertainment's Steve Moore**, **EMI Publishing's Gary Overton**, **CMT's Brian Philips**, **Allied Artist & Event Services' Rob Potts**, **Music Row's David Ross**, **WSM-FM/Nashville's John Sebastian**, **William Morris Agency's Rick Shipp**, **Billboard's Phyllis Stark**, **UMG's James Stroud**, publisher **Jody Williams**, and **Lifetime Directors J. William Denny**, **Ralph Peer II** and **Frances Preston**. The new term begins Nov. 16.

Radio News

Personalities: OK, how many bras does it take to span 20 blocks? We don't know either, because **WSIX**/afternoon drivers **Big D & Bubba** didn't tell us. We do know, however, that last Friday they presented **Bras Up Broadway**, their second annual event to benefit the **Susan G. Komen Foundation**. For those familiar with Music City, the lingerie was strung together the entire length of Broadway. It ran all the way through downtown Nashville from 1st Avenue, over the interstate and past the West End split. We'll announce the monies raised when the boys are done countin'. Could be sometime next year.

If you experienced transmission problems ... please call our Circulation Department at 310-788-1625.

© 2005 Radio & Records. All Rights Reserved. No part of this material may be reproduced in any form or incorporated in any information retrieval system without written permission of the Publisher.



GRETCHEN WILSON
"i don't feel like loving you today"
R&R: 45 - 37 BREAKER! +249 spins. +626 points!
BB: 41* - 36* +284 spins. +1.45 million impressions!
Most Added for the 3rd week in a row!

New this week: KMPS WSIX KEEY WKHX
 WKKT KSSN WBCT WSOC WXBQ WRBT
 WWYZ WGGY WGTY WIOV WQDR KTOM
 WQBE KTTS WOKO WXBW WOKQ WFRE

The phones are ringing for the next SMASH from Gretchen Wilson.

MOVE IT UP TODAY!

Sony Music NASHVILLE EPIC

Programming: KUPL/Portland, OR MD/afternoon driver **Rick "Bubba" Taylor** has been elevated to Asst. PD.

Imaging: **Scott Matthews** from WRVV/Harrisburg, PA and **Melody Sharp-Sykes** from Clear Channel/St. Louis are the new imaging voices for KPLX/Dallas. The join actor **Barry Corbin** in the Wolf's stable of voice talent.

Chart Chat

Congrats to new Arista/Nashville VP/Promotion **Skip Bishop**, National/Director **Teddi Bonadies** and their staff. They celebrated Skip's first day on the job by nabbing 73 adds on **Carrie Underwood's** single "Jesus, Take the Wheel," while also scoring a first-week Breaker. Not a bad way to start. While not technically her debut release — Underwood hit No. 49 with her post-*American Idol* single "Inside Your Heaven" — this is her first single worked totally by Arista/Nashville.

And belated kudos to Universal South VP/Promotion **Michael Powers** and his team on last week's most added effort on **Rockie Lynne**. His single "Lipstick" garnered 33 first-week adds, the most by a debut single since Gretchen Wilson's "Redneck Woman" back in March 2004.

Music News

Montgomery Gentry's *You Do Your Thing* has been certified platinum by the RIAA.

Trisha Yearwood's *Jasper County* has been certified gold.

Industry News

Marco Promotions is launching Marco Vision, a web-enhanced DVD service that compiles current video releases and other elements and services them to reporting and key secondary Country stations.

The 14th annual Tin Pan South Songwriters Festival is scheduled for March 27 to April 1, 2006 in Nashville.

Nashville's Awards Week

BMI hosted its annual Country Awards Oct. 18 at its headquarters in Nashville. "Live Like You Were Dying" was honored as Song of the Year, while Sony/ATV Music Publishing was named Publisher of the Year. **Harley Allen**, Big & Rich's **Big Kenny** and Lonestar's **Richie McDonald** shared the Songwriter of the Year award. **Charlie Daniels** received BMI's Icon honor and a musical tribute from **Travis Tritt** and **Montgomery Gentry**.

Performing rights organization SESAC honored its writers and publishers during an awards dinner Oct. 19 in Nashville. **Scotter Carusoe**, who wrote Kenny Chesney's "Anything But Mine," was named Songwriter of the Year; "Mississippi Girl" earned Song of the Year honors; and Carnival Music took Publisher honors.

Life Notes

Congrats to Sawyer Brown guitarist **Shayne Hill** on his marriage to Kristin Gartner on Oct. 8.

Best wishes to **Neal McCoy** and his wife, Melinda, who celebrated their 25th wedding anniversary yesterday. The couple met in an East Texas shoe store where Neal worked. Offering his secret for a successful show-biz marriage, McCoy said, "I got lucky enough to find somebody who can put up with me." Amen. Er, I mean, congrats!

Chronicle

Our most heartfelt condolences go out to XM Satellite Radio's **Jon Anthony**, whose sister, Melissa Horton, was killed in a car accident on Oct. 8 in Kentucky. She was 39. Later that day, Jon's father, David Horton, passed away after a long illness, at age 63. Both were buried in Anthony's hometown of Lebanon, KY on Oct. 11. Our thoughts and prayers are with Jon and his family.

If you experienced transmission problems ... please call our Circulation Department at 310-788-1625.

© 2005 Radio & Records. All Rights Reserved. No part of this material may be reproduced in any form or incorporated in any information retrieval system without written permission of the Publisher.

The Follow-Up To The Multi-Week Top Ten Single "Help Somebody"

Is A BREAKER!
Thanks Country Radio!

the new Columbia smash from
the CMA-nominated Duo Of The Year



"NOBODY GONNA TELL ME WHAT TO DO"

R&R BREAKER! 36

BB 41*

ONE OF TODAY'S MOST ADDED!

New airplay for the brothers today from

KZLA, KILT, KMLE, WOGI,
WGAR, WKKT, WQDR, WGNA,
WRBT, KBKO & WCAT!

From the Gold-bound Columbia CD & Dual Disc
GET RIGHT WITH THE MAN



Callout America: Top 20 35-49 Adults With Only 77% Familiarity!
Upcoming VZ-TV: Blue Collar TV / Hannity & Colmes / Fox & Friends!
Major Tour Announcement Coming Thursday, 11/10/05!



Sincerest condolences to BNA Dir./West Coast Promotion **Scot Michaels** on the Oct. 14 passing of his father, Tony Cuthill.

The Week In Review

Below are some of the stories that first appeared in the **R&R Country Daily** over the last seven .

R&R Country Daily, Monday, Oct. 24: Radio vet **Mary Befera** is named Assoc. Dir./Promotion for Midas/Nashville. Befera is a former co-owner of Virginia Broadcasting and Befera Broadcasting in Minnesota and most recently worked as GM for Clear Channel/Duluth, MN.

RBCD, Friday, Oct. 21: WKHX/Atlanta and morning team **Bandy & Bailey** — **Michael Bandy** and **Jason Bailey** — parted company after the two sides failed to reach an agreement on a contract renewal. The duo can be reached at bnbcomm@yahoo.com.

RBCD, Thursday, Oct. 20: **Stefan Carpenter** was named PD of Knight Broadcasting Country outlet KRAZ/Santa Maria-Santa Barbara, CA.

RBCD, Wednesday, Oct. 19: KIXQ/Joplin, MO OM **Jason Knight** is handling programming duties following the departure of PD/midday host “**Shotgun**” **Steve Kelly**. T&R’s for the PD post to Knight at 2702 East 32nd St., Joplin, MO 64804.

Toby Keith, Mariah Carey, Kelly Clarkson, 50 Cent, Green Day and **Gwen Stefani** are the nominees for the **2005 American Music Awards T-Mobile Text In Award**. The fan-voted winner will be recognized on the Nov. 22 ABC telecast.

RBCD, Tuesday, Oct. 18: CMA will donate an archive of all CMA Awards broadcasts, dating from 1968, to the Museum of Television & Radio on Nov. 9 in New York. The donation represents the largest single collection of country footage ever made available to the museum.

Diamond Rio’s third annual Arby’s Charity Tour Nashville raised more than \$135,000 for Big Brothers Big Sisters of Middle Tennessee and the Arby’s Foundation.

Dates & Deadlines

Nov. 15: 39th annual CMA Awards. Madison Square Garden, New York. Details at www.cmaworld.com.

Nov. 18: CRS-37 early-bird registration deadline. Details at www.crb.org.

Feb. 14: Country Radio & DJ Hall of Fame Dinner. Details at www.crb.org.

Feb. 15-17: CRS-37. Nashville Convention Center. Details at www.crb.org.

CD GALLERY

Here are the releases new in stores today:

Merle Haggard *Chicago Wind* (Capitol)



After nearly 20 years away, Haggard returned to Capitol last year for the standards album *Unforgettable*. For his second act in this new run at the label, Haggard lured storied label exec Jimmy

Bowen out of retirement to produce. Toby Keith duets on “Some of Us Fly,” while songwriters on the set include Willie Nelson, Roger Miller and, of course, Haggard himself.

Joe Nichols *III* (Universal South)



Breaking into the top 10 with first single “Tequila Makes Her Clothes Fall Off” isn’t a bad way to kick off release week for Nichol’s third U.S. release. Producer Brent Rowan, who drove the desk for the first two, is back, but Nichols also brought in Buddy Cannon and Byron Gallimore for some tracks. Cuts include “Freedom Feels Like Lonely” and “I’ll Wait for You.”

If you experienced transmission problems ... please call our Circulation Department at 310-788-1625.

© 2005 Radio & Records. All Rights Reserved. No part of this material may be reproduced in any form or incorporated in any information retrieval system without written permission of the Publisher.

Columbia Records is proud to present our latest star

BRICE LONG and his new single

Produced by Keith Stegall & Mark Wright

Written by Wendell Mobley and D. Vincent Williams

“ANYWHERE BUT HERE”

MAJOR spins in Dallas (23x at the Wolf just this week!) + airplay in Philadelphia, Cleveland, Corpus Christi, Boise, Des Moines, Dover & more!

“A touching and incredible song from a very talented newcomer!” - *Cadillac Jack, WXTU/Philadelphia*

“What happens when a fresh new voice finds a hit song? Instant phones!” - *Andy Elliott, KJJY & KHKI/Des Moines*

New airplay today from KATM, KDRK & KUBL!

Airplay Date 11/21/05 - test it on-air now and watch the phones light up!

Look for Brice & your Columbia regional coming to your station SOON!



MUSICNOTES

↪ **Shooter Jennings, Jessi Colter, Kid Rock, Alison Krauss, Kris Kristofferson, Martina McBride, Brad Paisley, Montgomery Gentry and Dwight Yoakam** join Sheryl Crow, Foo Fighters, Norah Jones and U2 for CBS's *I Walk the Line: A Night for Johnny Cash*. The show, to be taped in Hollywood, will air Nov. 16. Joaquin Phoenix, Reese Witherspoon and Dennis Quaid will introduce performances.

↪ **Trace Adkins** recently traveled to Washington, DC to participate in the Food Allergy & Anaphylaxis Network's effort to lobby lawmakers to promote food-allergy education in public schools. Adkins spoke about his 4-year-old daughter's struggle with multiple severe food allergies. Adkins is selling PAL (Protect A Life) Bears on his website, proceeds from which go toward food-allergy research.

↪ **Lonestar** will perform at Storm Aid: A Relief for Katrina on Nov. 6 in Baton Rouge, with proceeds benefiting the American Red Cross of Louisiana. The show, organized by WYNK/Baton Rouge and WNOE/New Orleans, was originally scheduled for September.

| VIDEO ADDS | |
|------------------------|-----------------------------------|
| CMT | |
| SHANNON BROWN | Corn Fed |
| LEE ANN WOMACK | Twenty Years And Two Husbands Ago |
| GREAT AMERICAN COUNTRY | |
| SHANNON BROWN | Corn Fed |
| AMBER DOTSON | I Ain't Your Mama |

RANDOM FAX®

Tuesday, 10/25

BIRTHDAYS: Chely Wright, Mark Miller, Enzo DeVincenzo, Jennifer Thorpe

On TV: CNN: Joe Nichols, *Showbiz Tonight*.

Wednesday, 10/26

BIRTHDAYS: Keith Urban, Doug Montgomery

On TV: ABC: Joe Nichols, *The View*; GAC: Collin Raye, *GAC Classic*.

Thursday, 10/27

BIRTHDAYS: Wayne Carlyle, Amy Hendon, John Mosech

On TV: CMT: Faith Hill, Joe Nichols, *Top Twenty Countdown*.

Friday, 10/28

BIRTHDAYS: Charlie Daniels, Brad Paisley

On TV: NBC: Craig Morgan, *Three Wishes*; WE: Buddy Jewell, Trent Willmon, *Three Men and a Chick Flick*.

Saturday, 10/29

BIRTHDAYS: none

On TV: GAC: Jeannie Seely, Wynonna, Brad Paisley, Cherryholmes, *Grand Ole Opry Live*. Shop At Home: Steve Wariner, *Grand Ole Opry Showcase*.

Sunday, 10/30

BIRTHDAYS: Cassidy Osborn (SheDaisy), Emma Grandillo, Ron Howie, Mike Owens

On TV: GAC: Jeannie Kendall, *GAC Classic*

Monday, 10/31

BIRTHDAYS: the late Dale Evans, Kinky Friedman, Darryl Worley, Lisa Berg, Mark Brown, Jane Messmore, Mike Strange, Amy Willis

*premiere airing

If you experienced transmission problems ... please call our Circulation Department at 310-788-1625.

© 2005 Radio & Records. All Rights Reserved. No part of this material may be reproduced in any form or incorporated in any information retrieval system without written permission of the Publisher.

Miranda Lambert Album sales up over 20% in 2 weeks.

R&R: 42-38
BB: 43* - 42*
 Up over 850,000 impressions!

“Kerosene”

New this week: KSON KRST WPOR!

Double Digit spins this week at: KPLX KTYS KZLA KBEQ WDAF KWJJ WKIS KUSS WCTO
 WGTY WCTQ WGNE WKSJ WPCV KCCY KKCS WYPY KIZN
 KSKS KSOP KTOM KHKI WNCY WWQM

Phones are hot. Sales are even HOTTER! Add “Kerosene” today!

Sony Music NASHVILLE EPIC

KBEQ Blasts 12-1; Country Nos. 1, 2 In Portland, OR

KBEQ (Q104)/Kansas City blew the doors off the summer Arbitron, leaping 3.9-6.1, from 12th to first. PD **Mike Kennedy** reports this is the first time KBEQ has been No. 1 12+ since he got there, in 1991, which makes this the first time Q104 has ever led KC's ratings as a Country outlet — it debuted Country in February 1992.

New KUPL/Portland, OR PD **John Paul**, who arrived in June, celebrates his first book in Portland at No. 1. Meanwhile, KWJJ (The Wolf) is nipping at his heels, just 0.4 behind.

Each week's **R&R** Country Hotfax Update will feature Country stations' ratings. For daily, full-market updates, go to www.radioandrecords.com and click on "Ratings" — it's free! A "+" indicates a Classic Country outlet, a "^" designates Country stations in the same market owned by a single operator, and an "*" indicates a tie.

| Station/City | 12+ Share Sp '05 | 12+ Share Su '05 | 12+ Rank Sp '05 | 12+ Rank Su '05 | Station/City | 12+ Share Sp '05 | 12+ Share Su '05 | 12+ Rank Sp '05 | 12+ Rank Su '05 |
|-----------------------|---------------------|---------------------|--------------------|--------------------|--|---------------------|---------------------|--------------------|--------------------|
| WKHX/Atlanta^ | 5.6 | 5.8 | 3 | 3 | WMIL/Milwaukee | 6.1 | 7.5 | 4 | 2 |
| WYAY/Atlanta^ | 2.9 | 2.6 | 15* | 13* | WTKM-AM & FM/Milwaukee+ | 1.1 | 1.0 | 19* | 19 |
| WPOC/Baltimore | 8.2 | 9.5 | 2 | 1 | WEXT/Milwaukee | 1.1 | 2.0 | 20 | 16* |
| WKLB/Boston | 3.2 | 3.8 | 12* | 8 | (Flipped to Regional Mexican Sept. 16) | | | | |
| WYRK/Buffalo | 10.8 | 11.7 | 1 | 1 | KEEY/Minneapolis | 7.3 | 8.0 | 3 | 3 |
| WUSN/Chicago | 3.8 | 3.5 | 5* | 8 | WXTU/Philadelphia | 4.0 | 4.3 | 6 | 6 |
| WUBE/Cincinnati | 5.9 | 6.4 | 3 | 2 | KNIX/Phoenix | 4.3 | 4.3 | 7 | 8 |
| WYGY/Cincinnati | 3.6 | 3.0 | 12* | 13 | KMLE/Phoenix | 5.1 | 3.2 | 4 | 13 |
| WPFB/Dayton | .8 | 1.3 | 22* | 16* | WDSY/Pittsburgh | 7.3 | 7.8 | 3 | 3 |
| (Cincinnati Arbitron) | | | | | WOGG & WOGI/Pittsburgh^ | 4.2 | 4.2 | 9* | 8 |
| WGAR/Cleveland | 8.2 | 7.1 | 1* | 3 | WOGF & WOGH/Pittsburgh^ | 1.7 | 1.8 | 16 | 11 |
| WCOL/Columbus, OH | 7.3 | 7.8 | 4 | 2 | KUPL/Portland, OR | 5.4 | 5.7 | 2 | 1 |
| WHOK/Columbus, OH | 3.8 | 3.6 | 9 | 10 | KWJJ/Portland, OR | 5.3 | 5.3 | 3 | 2 |
| WCLT/Columbus, OH | 2.5 | 2.2 | 13 | 15* | WCTK/Providence | 5.9 | 5.7 | 4 | 2 |
| KSCS/Dallas^ | 3.8 | 4.0 | 7 | 4 | KFRG/Riverside | 5.4 | 5.7 | 3 | 3 |
| KPLX/Dallas | 4.6 | 3.8 | 3 | 6* | KTDD-AM/Riverside+ | 1.1 | 1.2 | 27* | 24* |
| KTYS/Dallas^ | 1.3 | 1.3 | 27* | 27* | KZLA/Los Angeles | 0.8 | 1.2 | 33* | 24* |
| KYGO/Denver | 7.0 | 6.9 | 1 | 1 | (Riverside-San Bernardino Arbitron) | | | | |
| WYCD/Detroit | 4.7 | 4.4 | 7* | 7 | KSON & KSOQ/San Diego | 3.4 | 4.1 | 7* | 2 |
| WWYZ/Hartford | 7.1 | 7.2 | 3 | 3 | KUSS/San Diego | 2.5 | 3.6 | 15* | 6* |
| KILT/Houston | 3.8 | 3.6 | 6 | 8* | KMPS/Seattle | 7.4 | 6.1 | 1 | 1 |
| KTHT/Houston+^ | 2.7 | 3.2 | 15* | 10* | KNBQ/Seattle | 0.4 | 1.8 | 31 | 25 |
| KKBQ/Houston^ | 3.3 | 3.0 | 10 | 14 | KAYO/Seattle | 1.0 | — | 26 | — |
| WFMS/Indianapolis | 10.3 | 10.1 | 1 | 1 | (Flipped to Regional Mexican in June) | | | | |
| WLHK/Indianapolis | 5.1 | 5.3 | 7 | 6 | WIL/St. Louis | 5.1 | 5.7 | 5 | 4 |
| KBEQ/Kansas City^ | 3.9 | 6.1 | 12 | 1 | KSD/St. Louis | 3.4 | 3.9 | 12* | 9 |
| WDAF-FM/Kansas City | 6.1 | 5.6 | 2 | 5 | WQYK/Tampa^ | 5.8 | 5.9 | 3 | 2 |
| KFKF/Kansas City^ | 4.6 | 4.6 | 8 | 8 | WFUS/Tampa | 3.0 | 3.7 | 13* | 10 |
| KZLA/Los Angeles | 1.8 | 1.9 | 23 | 22 | WYUU/Tampa^ | 1.6 | 1.6 | 19* | 17 |
| WAMZ/Louisville | 12.7 | 11.8 | 1 | 1 | (Flipped to Tropical Aug. 8) | | | | |
| WPTI/Louisville | 2.7 | 2.7 | 12 | 11* | WMZQ/Washington | 4.0 | 3.5 | 6* | 8 |
| WKIS/Miami | 3.1 | 3.0 | 14* | 14 | | | | | |

Reba McEntire

"You're Gonna Be"

Heatin' Up... **38** to **33** R&R 20+ Adds in the last 3 Weeks!

"Reba is 'Gonna Be' always played by me...another solid Reba tune that sounds better with every spin...One of the Top Requests at KZLA."
-RJ Curtis, PD, KZLA/Los Angeles

MCA
NASHVILLE

If you experienced transmission problems ... please call our Circulation Department at 310-788-1625.

© 2005 Radio & Records. All Rights Reserved No part of this material may be reproduced in any form or incorporated in any information retrieval system without written permission of the Publisher.

| LW | TW | ARTIST Title Label(s) | Total Points | +/- Points | Total Plays | +/- Plays | Tot. Aud. (00) | +/- Aud. (00) | Wks On | Total Station |
|----|----|--|--------------|------------|-------------|-----------|----------------|---------------|--------|---------------|
| 1 | 1 | KEITH URBAN Better Life (Capitol) | 12917 | 378 | 4455 | +214 | 397524 | 10004 | 13 | 119/0 |
| 6 | 2 | LEANN RIMES Probably Wouldn't Be This Way (Asylum/Curb) | 11062 | 597 | 3952 | +212 | 330793 | 18164 | 30 | 120/0 |
| 7 | 3 | RASCAL FLATTS Skin (Sarabeth) (Lyric Street) | 10990 | 1172 | 3862 | +422 | 327246 | 22159 | 25 | 120/0 |
| 2 | 4 | CRAIG MORGAN Redneck Yacht Club (BBR) | 10855 | -1129 | 3805 | -467 | 326973 | -35183 | 23 | 118/0 |
| 3 | 5 | JAMIE O'NEAL Somebody's Hero (Capitol) | 10605 | -682 | 3592 | -313 | 323277 | -23051 | 30 | 117/0 |
| 8 | 6 | KENNY CHESNEY Who You'd Be Today (BNA) | 10041 | 604 | 3421 | +199 | 305828 | 20516 | 6 | 120/0 |
| 4 | 7 | JOSH GRACIN Stay With Me (Brass Bed) (Lyric Street) | 9923 | -794 | 3422 | -363 | 284363 | -30482 | 26 | 118/0 |
| 12 | 8 | JOE NICHOLS Tequila Makes Her Clothes Fall Off (Universal South) | 9066 | 1139 | 3156 | +410 | 267897 | 38364 | 12 | 120/1 |
| 11 | 9 | DIERKS BENTLEY Come A Little Closer (Capitol) | 8768 | 838 | 3079 | +293 | 261092 | 26408 | 14 | 119/1 |
| 9 | 10 | LONESTAR You're Like Comin' Home (BNA) | 8707 | 319 | 3032 | +109 | 262008 | 9258 | 21 | 118/0 |
| 15 | 11 | GARTH BROOKS Good Ride Cowboy (Lyric Street/Pearl) | 8521 | 989 | 2895 | +316 | 264038 | 24381 | 3 | 119/1 |
| 13 | 12 | NEAL MCCOY Billy's Got His Beer Goggles On (903) | 8182 | 576 | 2869 | +206 | 244073 | 25500 | 25 | 114/0 |
| 14 | 13 | TOBY KEITH Big Blue Note (Show Dog/DreamWorks) | 8034 | 454 | 2794 | +180 | 237063 | 13919 | 7 | 120/0 |
| 16 | 14 | GARY ALLAN Best I Ever Had (MCA) | 7867 | 400 | 2730 | +119 | 233203 | 11698 | 21 | 119/1 |
| 10 | 15 | JASON ALDEAN Hicktown (BBR) | 7004 | -1249 | 2477 | -494 | 191775 | -40950 | 27 | 120/0 |
| 17 | 16 | FAITH HILL Like We Never Loved At All (Warner Bros./Curb) | 6775 | 694 | 2334 | +280 | 189030 | 19971 | 8 | 119/0 |
| 18 | 17 | GEORGE STRAIT She Let Herself Go (MCA) | 6457 | 641 | 2359 | +280 | 186791 | 24390 | 8 | 117/1 |
| 21 | 18 | ALAN JACKSON USA Today (Arista) | 5778 | 608 | 2112 | +197 | 159169 | 16597 | 11 | 114/0 |
| 19 | 19 | LITTLE BIG TOWN Boondocks (Equity) | 5709 | 383 | 2036 | +127 | 158562 | 12692 | 22 | 109/2 |
| 22 | 20 | BILLY CURRINGTON Must Be Doin' Somethin' Right (Mercury) | 5160 | 662 | 2004 | +259 | 152957 | 21924 | 21 | 113/5 |
| 26 | 21 | MARTINA MCBRIDE Rose Garden (RCA) | 4643 | 507 | 1500 | +150 | 126697 | 16209 | 11 | 104/3 |
| 23 | 22 | CHRIS CAGLE Miss Me Baby (Capitol) | 4615 | 263 | 1785 | +97 | 132046 | 12207 | 13 | 109/8 |
| 27 | 23 | TRACE ADKINS Honky Tonk Badonkadonk (Capitol) | 4414 | 1019 | 1652 | +378 | 128151 | 37174 | 5 | 101/11 |
| 29 | 24 | TIM MCGRAW My Old Friend (Curb) | 4274 | 1097 | 1572 | +400 | 116888 | 31067 | 4 | 112/10 |
| 30 | 25 | SUGARLAND Just Might (Make Me Believe) (Mercury) | 3662 | 556 | 1302 | +189 | 103760 | 13700 | 7 | 106/6 |

© 2005 Radio & Records



Sara Evans

"CHEATIN'"

The follow-up smash to her multi-week #1
 From her **Real Fine Place** CD...
ALREADY GOLD in **ONLY 2 weeks**

Don't CHEAT your listeners... give them what they want...**MORE SARA!**
TOP 5 MOST ADDED...OFFICIAL IMPACT DATE 10/31...ADD IT NOW!



 SONY BMG
 MUSIC ENTERTAINMENT
 ©2005 BMG MUSIC

| LW | TW | ARTIST Title Label(s) | Total Points | +/- Points | Total Plays | +/- Plays | Tot. Aud. (00) | +/- Aud. (00) | Wks On | Total Station |
|----------------|-----------|--|--------------|------------|-------------|-----------|----------------|---------------|--------|---------------|
| 28 | 26 | KEITH ANDERSON XXL (Arista) | 3627 | 377 | 1332 | +126 | 94644 | 9809 | 13 | 102/1 |
| 33 | 27 | BRAD PAISLEY f/D. PARTON When I Get Where I'm Going (Arista) | 3329 | 733 | 1219 | +255 | 92800 | 15994 | 5 | 101/7 |
| 32 | 28 | BIG & RICH Comin' To Your City (Warner Bros.) | 3027 | 200 | 1040 | +67 | 82499 | 9794 | 8 | 85/2 |
| 31 | 29 | SHANIA TWAIN Shoes (Lyric Street) | 3008 | -19 | 1075 | +25 | 74284 | -935 | 8 | 93/0 |
| 24 | 30 | PHIL VASSAR Good Ole Days (Arista) | 2726 | -1551 | 872 | -579 | 71744 | -47180 | 18 | 104/0 |
| Breaker | 31 | JOSH TURNER Your Man (MCA) | 2402 | 433 | 921 | +138 | 61313 | 11984 | 14 | 72/4 |
| 35 | 32 | TERRI CLARK She Didn't Have Time (Mercury) | 2340 | 59 | 884 | +26 | 57645 | -2629 | 14 | 77/2 |
| 38 | 33 | REBA MCENTIRE You're Gonna Be (MCA) | 2267 | 535 | 806 | +167 | 55190 | 12331 | 8 | 79/4 |
| Breaker | 34 | BLAKE SHELTON Nobody But Me (Warner Bros.) | 1934 | 338 | 773 | +121 | 44253 | 9250 | 9 | 76/8 |
| Breaker | 35 | JAMEY JOHNSON The Dollar (BNA) | 1734 | 218 | 658 | +116 | 38558 | 2204 | 8 | 74/5 |
| Breaker | 36 | VAN ZANT Nobody Gonna Tell Me What To Do (Columbia) | 1522 | 174 | 636 | +39 | 35696 | 1916 | 5 | 77/9 |
| Breaker | 37 | GRETCHEN WILSON I Don't Feel Like Loving You Today (Epic) | 1406 | 626 | 569 | +249 | 40944 | 17458 | 2 | 74/16 |
| 42 | 38 | MIRANDA LAMBERT Kerosene (Epic) | 1371 | 201 | 539 | +70 | 33295 | 8895 | 4 | 60/2 |
| Breaker | 39 | CARRIE UNDERWOOD Jesus, Take The Wheel (Arista) | 1159 | 1147 | 377 | +375 | 43558 | 42903 | 1 | 73/73 |
| Debut | 40 | BROOKS & DUNN Believe (Arista) | 1117 | 675 | 413 | +243 | 32335 | 20749 | 1 | 61/9 |
| 44 | 41 | DANIELLE PECK I Don't (Big Machine/Show Dog) | 1041 | 146 | 408 | +61 | 22414 | 2991 | 3 | 63/7 |
| 43 | 42 | GEORGE STRAIT Texas (MCA) | 1011 | -100 | 237 | -13 | 35009 | -2761 | 18 | 5/0 |
| 47 | 43 | RAY SCOTT My Kind Of Music (Warner Bros.) | 896 | 147 | 435 | +70 | 16839 | 2806 | 8 | 38/2 |
| Debut | 44 | MONTGOMERY GENTRY She Don't Tell Me To (Columbia) | 859 | 344 | 330 | +157 | 24650 | 8836 | 1 | 61/36 |
| 46 | 45 | TRICK PONY Ain't Wastin' Good Whiskey On You (Asylum/Curb) | 848 | 82 | 433 | +53 | 16293 | 3570 | 5 | 55/1 |
| Debut | 46 | ROCKIE LYNNE Lipstick (Universal South) | 794 | 600 | 274 | +235 | 15461 | 10064 | 1 | 41/7 |
| 49 | 47 | CROSS CANADIAN RAGWEED Fightin' For (Universal South) | 688 | 18 | 206 | +17 | 21039 | 229 | 4 | 10/1 |
| 48 | 48 | SAWYER BROWN They Don't Understand (Curb) | 676 | 1 | 313 | +17 | 16838 | -1444 | 8 | 34/4 |
| 50 | 49 | SHANNON BROWN Corn Fed (Warner Bros.) | 605 | 9 | 289 | +30 | 10189 | 1824 | 2 | 33/2 |
| Debut | 50 | TRENT TOMLINSON Drunker Than Me (Lyric Street) | 572 | 21 | 244 | +28 | 12762 | 3326 | 1 | 53/35 |

© 2005 Radio & Records

Heavy Spins, Great Sales & Top 5 Research!

"BILLY'S GOT HIS BEER GOGGLES ON"

NEAL MCCOY

R&R: **12** Up +206 spins, +576 pts

BB: 13*, Audience up 2 Million This Week!



MEDIABASE CALLOUT:

#2 ADULTS, #3 MEN, #5 WOMEN!



© 2005 Radio & Records

COUNTRY

MOST ADDED

| ARTIST Title Label(s) | Adds |
|---|------|
| CARRIE UNDERWOOD Jesus, Take The Wheel (Arista) | 73 |
| MONTGOMERY GENTRY She Don't Tell Me To (Columbia) | 36 |
| TRENT TOMLINSON Drunker Than Me (Lyric Street) | 35 |
| GRETCHEN WILSON I Don't Feel Like Loving You Today (Epic) | 16 |
| TRACE ADKINS Honky Tonk Badonkadonk (Capitol) | 11 |
| TIM MCGRAW My Old Friend (Curb) | 10 |
| SARA EVANS Cheatin' (RCA) | 10 |
| VAN ZANT Nobody Gonna Tell Me What To Do (Columbia) | 9 |
| BROOKS & DUNN Believe (Arista) | 9 |

MOST INCREASED POINTS

| ARTIST Title Label(s) | Total Pt. Increase |
|--|--------------------|
| RASCAL FLATTS Skin (Sarabeth) (Lyric Street) | +1172 |
| CARRIE UNDERWOOD Jesus, Take The Wheel (Arista) | +1147 |
| JOE NICHOLS Tequila Makes Her Clothes Fall Off (Universal South) | +1139 |
| TIM MCGRAW My Old Friend (Curb) | +1097 |
| TRACE ADKINS Honky Tonk Badonkadonk (Capitol) | +1019 |
| GARTH BROOKS Good Ride Cowboy (Lyric Street/Pearl) | +989 |
| DIERKS BENTLEY Come A Little Closer (Capitol) | +838 |
| BRAD PAISLEY f/D. PARTON When I Get Where I'm Going (Arista) | +733 |
| FAITH HILL Like We Never Loved At All (Warner Bros./Curb) | +694 |
| BROOKS & DUNN Believe (Arista) | +675 |

MOST INCREASED PLAYS

| ARTIST Title Label(s) | Total Play Increase |
|--|---------------------|
| RASCAL FLATTS Skin (Sarabeth) (Lyric Street) | +422 |
| JOE NICHOLS Tequila Makes Her Clothes Fall Off (Universal South) | +410 |
| TIM MCGRAW My Old Friend (Curb) | +400 |
| TRACE ADKINS Honky Tonk Badonkadonk (Capitol) | +378 |
| CARRIE UNDERWOOD Jesus, Take The Wheel (Arista) | +375 |
| GARTH BROOKS Good Ride Cowboy (Lyric Street/Pearl) | +316 |
| DIERKS BENTLEY Come A Little Closer (Capitol) | +293 |
| GEORGE STRAIT She Let Herself Go (MCA) | +280 |
| FAITH HILL Like We Never Loved At All (Warner Bros./Curb) | +280 |
| BILLY CURRINGTON Must Be Doin' Somethin' Right (Mercury) | +259 |

COUNTRY INDICATOR

MOST ADDED

| ARTIST Title Label(s) | Adds |
|---|------|
| MONTGOMERY GENTRY She Don't Tell Me To (Columbia) | 21 |
| CARRIE UNDERWOOD Jesus, Take The Wheel (Arista) | 21 |
| TRENT TOMLINSON Drunker Than Me (Lyric Street) | 20 |
| ROCKIE LYNNE Lipstick (Universal South) | 20 |
| SARA EVANS Cheatin' (RCA) | 19 |
| GRETCHEN WILSON I Don't Feel Like Loving You Today (Epic) | 16 |
| BROOKS & DUNN Believe (Arista) | 14 |
| BRAD PAISLEY f/DOLLY PARTON When I Get Where I'm Going (Arista) | 12 |
| REBA MCENTIRE You're Gonna Be (MCA) | 9 |

MOST INCREASED POINTS

| ARTIST Title Label(s) | Total Pt. Increase |
|--|--------------------|
| GARTH BROOKS Good Ride Cowboy (Lyric Street/Pearl) | +535 |
| GEORGE STRAIT She Let Herself Go (MCA) | +434 |
| TIM MCGRAW My Old Friend (Curb) | +412 |
| RASCAL FLATTS Skin (Sarabeth) (Lyric Street) | +379 |
| JOE NICHOLS Tequila Makes Her Clothes Fall Off (Universal South) | +373 |
| TRACE ADKINS Honky Tonk Badonkadonk (Capitol) | +370 |
| KENNY CHESNEY Who You'd Be Today (BNA) | +362 |
| BRAD PAISLEY f/D. PARTON When I Get Where I'm Going (Arista) | +360 |
| BILLY CURRINGTON Must Be Doin' Somethin' Right (Mercury) | +349 |
| MONTGOMERY GENTRY She Don't Tell Me To (Columbia) | +349 |

MOST INCREASED PLAYS

| ARTIST Title Label(s) | Total Play Increase |
|--|---------------------|
| GARTH BROOKS Good Ride Cowboy (Lyric Street/Pearl) | +443 |
| TIM MCGRAW My Old Friend (Curb) | +384 |
| GEORGE STRAIT She Let Herself Go (MCA) | +342 |
| BRAD PAISLEY f/D. PARTON When I Get Where I'm Going (Arista) | +329 |
| JOE NICHOLS Tequila Makes Her Clothes Fall Off (Universal South) | +327 |
| KENNY CHESNEY Who You'd Be Today (BNA) | +312 |
| TRACE ADKINS Honky Tonk Badonkadonk (Capitol) | +301 |
| BILLY CURRINGTON Must Be Doin' Somethin' Right (Mercury) | +297 |
| MONTGOMERY GENTRY She Don't Tell Me To (Columbia) | +289 |
| RASCAL FLATTS Skin (Sarabeth) (Lyric Street) | +281 |

Wynonna "Attitude"

Top 10 Most added.....Again!

**Stations giving some Attitude:
WUSN, WXTU, KNCI, KUPL, WXBQ
KSKS, WWQM, WBEE, WGGY, WRNS,
KJUG, WPKX, KZSN, WITL**



Trick Pony "Ain't Wastin' Good Whiskey On You"

RR (45) BB (53)

**Already added:
WKHX, WAMZ, WYCD, KBEQ, KTYS, KKBQ,
KIIM, WGAR, WYGY, KSSN, KRTY, WGKX, WSOC,
WKKT, WIVK, WWGR, KRST, KBQI
"Pony" up to the Add Bar
and get ya a drink!**

COUNTRY INDICATOR NEW & ACTIVE

CARRIE UNDERWOOD Jesus, Take The Wheel (*Arista*)

Total Points: 135, Total Stations: 21, Adds: 21

ZONA JONES I'll Give It To You (*D/Quarterback*)

Total Points: 109, Total Stations: 16, Adds: 3

BRITTANY WELLS Too Long (*Spindletop*)

Total Points: 90, Total Stations: 13, Adds: 0

COUNTRY NEW & ACTIVE

LUKE STRICKLIN American By God's Amazing Grace (*Pacific*)

Total Points: 526, Total Stations: 17, Adds: 0

HOT APPLE PIE We're Makin' Up (*DreamWorks*)

Total Points: 466, Total Stations: 38, Adds: 5

SARA EVANS Cheatin' (*RCA*)

Total Points: 336, Total Stations: 15, Adds: 10

WYNONNA Attitude (*Asylum/Curb*)

Total Points: 318, Total Stations: 24, Adds: 8

LILA MCCANN f/JIM BRICKMAN I'm Amazed (*BBR*)

Total Points: 275, Total Stations: 18, Adds: 0

AMBER DOTSON I Ain't Your Mama (*Capitol*)

Total Points: 156, Total Stations: 13, Adds: 0

CAROLINA RAIN Let's Get It On (*Equity*)

Total Points: 110, Total Stations: 14, Adds: 4



10/31

CHELY WRIGHT C'est La Vie (*Dualtone/Painted Red*)

DANIEL SMITH Right Side Of Love (*Parlor*)

JACE EVERETT Bad Things (*Epic*)

JACK INGRAM Wherever You Are (*Big Machine/Show Dog*)

RYAN SHUPE & THE RUBBERBAND Banjo Boy (*Capitol*)

SARA EVANS Cheatin' (*RCA*)

11/7

CLINT BLACK Drinkin' Songs & Other Logic (*Equity*)

DOLLY PARTON Imagine (*Sugar Hill*)

11/14

No Adds for this Week

MOST PLAYED RECURRENTS

| ARTIST Title Label(s) | Total Points |
|---|--------------|
| MONTGOMERY GENTRY Something To Be Proud Of (<i>Columbia</i>) | 10119 |
| SARA EVANS A Real Fine Place To Start (<i>RCA</i>) | 7522 |
| TOBY KEITH As Good As I Once Was (<i>DreamWorks</i>) | 6924 |
| SUGARLAND Something More (<i>Mercury</i>) | 6396 |
| RASCAL FLATTS Fast Cars And Freedom (<i>Lyric Street</i>) | 5340 |
| FAITH HILL Mississippi Girl (<i>Warner Bros.</i>) | 4747 |
| KEITH URBAN Making Memories Of Us (<i>Capitol</i>) | 3782 |
| BROOKS & DUNN Play Something Country (<i>Arista</i>) | 3731 |
| SUGARLAND Baby Girl (<i>Mercury</i>) | 3688 |
| JOSH GRACIN Nothin' To Lose (<i>Lyric Street</i>) | 3564 |



120 Country reporters. Songs ranked by total points for the airplay week of 10/16-10/22. Bullets appear on songs gaining points and/or plays or remaining flat from previous week. If two songs are tied in total points, the song with the larger increase in points is placed first. Songs below No. 1 and down in points and plays for three consecutive weeks are moved to recurrent. Most Added is the total number of new adds officially reported to R&R by each reporting station. Songs unreported as adds do not count toward overall total stations playing a song. Most Increased Points lists the songs with the greatest week-to-week increases in total points. Station Weight = AQH Persons + (Market rank X 10) divided by 4180. Total Audience equals Average Quarter Hour Persons times number of plays (times 100). Each daypart on each station is assigned an AQH number. Average Quarter Hour Persons used herein with permission from Arbitron Inc. (© 2005, Arbitron Inc.) © 2005 Radio & Records.

Joe Nichols

hits the top ten like a freight train!

"Tequila" is flying everywhere!

Look at the Top Blasters this week!

KTYS-97, KPLX-54, KHKI-51, KTOM-47, KSKS-45, KUZZ-43, WGNE-43, KSCS-42, WDSY-42...

Ah but who cares...these guys are one lime short of a Bushel anyway!

ROCKIE LYNNE

34% of radio has got "LIPSTICK" on!

41 stations including KKCS, WBCT, WCOL, KIIM,

KIZN, KQFC and KSON all new this week plus

20 New Indicator Adds...2nd most added!

Yep, Lots of your Peers have "LIPSTICK" on.

Maybe you should add it, or we will tell everyone about the panties...



October 25, 2005

| LW | TW | ARTIST Title Label(s) | Total Points | +/- Points | Total Plays | +/- Plays | Tot. Aud. (00) | +/- Aud. (00) | Wks On | Total Station |
|----|----|--|--------------|------------|-------------|-----------|----------------|---------------|--------|---------------|
| 1 | ① | KEITH URBAN Better Life (Capitol) | 4636 | 35 | 3865 | +38 | 107584 | 983 | 13 | 102/1 |
| 6 | ② | RASCAL FLATTS Skin (Sarabeth) (Lyric Street) | 4306 | 379 | 3621 | +281 | 99502 | 8057 | 12 | 100/1 |
| 4 | ③ | LEANN RIMES Probably Wouldn't Be This Way (Asylum/Curb) | 4030 | 51 | 3383 | +44 | 90277 | -93 | 32 | 95/1 |
| 7 | ④ | DIERKS BENTLEY Come A Little Closer (Capitol) | 3697 | 243 | 3042 | +218 | 88106 | 5714 | 16 | 101/1 |
| 8 | ⑤ | LONESTAR You're Like Comin' Home (BNA) | 3652 | 229 | 3023 | +190 | 84408 | 4505 | 21 | 101/0 |
| 5 | 6 | JOSH GRACIN Stay With Me (Brass Bed) (Lyric Street) | 3480 | -479 | 2881 | -435 | 78015 | -11484 | 29 | 90/0 |
| 10 | ⑦ | KENNY CHESNEY Who You'd Be Today (BNA) | 3476 | 362 | 2945 | +312 | 82054 | 9918 | 6 | 102/2 |
| 9 | ⑧ | GARY ALLAN Best I Ever Had (MCA) | 3380 | 93 | 2823 | +70 | 78995 | 2661 | 22 | 101/0 |
| 3 | 9 | CRAIG MORGAN Redneck Yacht Club (BBR) | 3309 | -911 | 2576 | -885 | 79407 | -20608 | 23 | 84/0 |
| 13 | ⑩ | JOE NICHOLS Tequila Makes Her Clothes Fall Off (Universal South) | 3228 | 373 | 2726 | +327 | 73237 | 8924 | 12 | 97/3 |
| 2 | 11 | JAMIE O'NEAL Somebody's Hero (Capitol) | 3188 | -1145 | 2552 | -1002 | 74942 | -24985 | 30 | 89/0 |
| 11 | ⑫ | NEAL MCCOY Billy's Got His Beer Goggles On (903) | 3186 | 195 | 2549 | +129 | 74557 | 5235 | 29 | 96/1 |
| 14 | ⑬ | TOBY KEITH Big Blue Note (Show Dog/DreamWorks) | 3038 | 260 | 2559 | +223 | 69787 | 5787 | 8 | 103/1 |
| 15 | ⑭ | GEORGE STRAIT She Let Herself Go (MCA) | 2889 | 434 | 2475 | +342 | 66345 | 11323 | 8 | 100/2 |
| 18 | ⑮ | GARTH BROOKS Good Ride Cowboy (Lyric Street/Pearl) | 2844 | 535 | 2414 | +443 | 65354 | 12298 | 3 | 102/4 |
| 17 | ⑯ | FAITH HILL Like We Never Loved At All (Warner Bros./Curb) | 2535 | 221 | 2181 | +200 | 56591 | 5227 | 9 | 103/2 |
| 16 | ⑰ | ALAN JACKSON USA Today (Arista) | 2531 | 174 | 2175 | +124 | 57109 | 4156 | 11 | 101/2 |
| 19 | ⑱ | BILLY CURRINGTON Must Be Doin' Somethin' Right (Mercury) | 2369 | 349 | 1995 | +297 | 56469 | 8644 | 21 | 94/4 |
| 20 | ⑲ | CHRIS CAGLE Miss Me Baby (Capitol) | 2091 | 218 | 1753 | +198 | 49357 | 5093 | 13 | 85/3 |
| 21 | ⑳ | LITTLE BIG TOWN Boondocks (Equity) | 2020 | 318 | 1673 | +277 | 45136 | 7806 | 23 | 84/4 |
| 22 | ㉑ | TIM MCGRAW My Old Friend (Curb) | 1978 | 412 | 1703 | +384 | 43568 | 8327 | 6 | 89/6 |
| 25 | ㉒ | TRACE ADKINS Honky Tonk Badonkadonk (Capitol) | 1762 | 370 | 1465 | +301 | 39624 | 9467 | 5 | 84/4 |
| 23 | ㉓ | MARTINA MCBRIDE Rose Garden (RCA) | 1676 | 125 | 1414 | +120 | 37271 | 2466 | 11 | 76/3 |
| 24 | ㉔ | SUGARLAND Just Might (Make Me Believe) (Mercury) | 1660 | 164 | 1420 | +119 | 36843 | 4401 | 7 | 82/3 |
| 30 | ㉕ | BRAD PAISLEY f/D. PARTON When I Get Where I'm Going (Arista) | 1511 | 360 | 1292 | +329 | 34082 | 7516 | 5 | 90/12 |

© 2005 Radio & Records

Give your listeners a **TREAT** this Halloween.... **"Bad Things"**

The fun, sexy and slightly naughty new single from... **JACE EVERETT**

"The first time I heard it, I was hooked. This will be a hit!" -Carolyn Drosey, MD, WGGY

"Bad Things" is getting rave reviews at dance clubs across the country. Listeners LOVE IT!

Official add date is this Monday.

Couldn't wait: WNCY and WQXK

"Bad Things" is a GOOD thing. ADD IT MONDAY!





October 25, 2005

| LW | TW | ARTIST Title Label(s) | Total Points | +/- Points | Total Plays | +/- Plays | Tot. Aud. (00) | +/- Aud. (00) | Wks On | Total Station |
|--------------|-----------|---|--------------|------------|-------------|-----------|----------------|---------------|--------|---------------|
| 28 | 26 | KEITH ANDERSON <i>XXL (Arista)</i> | 1312 | 110 | 1104 | +92 | 28309 | 2688 | 13 | 68/1 |
| 29 | 27 | TERRI CLARK <i>She Didn't Have Time (Mercury)</i> | 1148 | -5 | 978 | +4 | 25622 | 285 | 14 | 66/3 |
| 33 | 28 | GRETCHEN WILSON <i>I Don't Feel Like Loving You Today (Epic)</i> | 1146 | 324 | 1020 | +260 | 25135 | 7622 | 3 | 69/16 |
| 32 | 29 | BIG & RICH <i>Comin' To Your City (Warner Bros.)</i> | 978 | 70 | 858 | +74 | 20974 | 1489 | 7 | 66/6 |
| 36 | 30 | BROOKS & DUNN <i>Believe (Arista)</i> | 960 | 254 | 857 | +230 | 20744 | 5653 | 4 | 65/14 |
| 31 | 31 | SHANIA TWAIN <i>Shoes (Lyric Street)</i> | 949 | 27 | 790 | +22 | 20284 | 218 | 8 | 58/0 |
| 34 | 32 | JOSH TURNER <i>Your Man (MCA)</i> | 863 | 94 | 749 | +83 | 19254 | 2064 | 14 | 51/5 |
| 35 | 33 | BLAKE SHELTON <i>Nobody But Me (Warner Bros.)</i> | 830 | 77 | 703 | +54 | 17817 | 1069 | 10 | 53/2 |
| 39 | 34 | REBA MCENTIRE <i>You're Gonna Be (MCA)</i> | 658 | 173 | 561 | +142 | 13779 | 3874 | 8 | 44/9 |
| 37 | 35 | VAN ZANT <i>Nobody Gonna Tell Me What To Do (Columbia)</i> | 653 | 90 | 529 | +75 | 14393 | 2652 | 6 | 47/3 |
| 43 | 36 | MONTGOMERY GENTRY <i>She Don't Tell Me To (Columbia)</i> | 609 | 349 | 516 | +289 | 13530 | 7330 | 2 | 50/21 |
| 38 | 37 | JAMEY JOHNSON <i>The Dollar (BNA)</i> | 606 | 96 | 503 | +78 | 13352 | 1880 | 7 | 41/6 |
| 41 | 38 | RAY SCOTT <i>My Kind Of Music (Warner Bros.)</i> | 385 | 43 | 335 | +35 | 7995 | 1108 | 9 | 31/3 |
| 40 | 39 | SAWYER BROWN <i>They Don't Understand (Curb)</i> | 366 | -26 | 262 | -23 | 8773 | -368 | 10 | 21/0 |
| 42 | 40 | TRICK PONY <i>Ain't Wastin' Good Whiskey On You (Asylum/Curb)</i> | 337 | 25 | 309 | +23 | 6886 | 788 | 6 | 31/3 |
| Debut | 41 | SARA EVANS <i>Cheatin' (RCA)</i> | 332 | 254 | 299 | +225 | 7263 | 5664 | 1 | 34/19 |
| 44 | 42 | MIRANDA LAMBERT <i>Kerosene (Epic)</i> | 281 | 38 | 237 | +35 | 5557 | 767 | 3 | 25/4 |
| Debut | 43 | ROCKIE LYNNE <i>Lipstick (Universal South)</i> | 246 | 179 | 211 | +147 | 4632 | 3306 | 1 | 28/20 |
| Debut | 44 | TRENT TOMLINSON <i>Drunker Than Me (Lyric Street)</i> | 242 | 134 | 202 | +114 | 4858 | 3045 | 1 | 29/20 |
| 47 | 45 | DANIELLE PECK <i>I Don't (Big Machine/Show Dog)</i> | 233 | 83 | 187 | +54 | 4657 | 1394 | 2 | 24/6 |
| 46 | 46 | KEVIN SHARP <i>I Think I'll Stay (Capit)</i> | 213 | 1 | 213 | +1 | 4615 | -42 | 7 | 15/0 |
| 45 | 47 | LUKE STRICKLIN <i>American By God's Amazing Grace (Pacific)</i> | 206 | -20 | 193 | -20 | 4553 | -280 | 9 | 20/0 |
| 48 | 48 | SHANNON BROWN <i>Corn Fed (Warner Bros.)</i> | 164 | 18 | 161 | +30 | 3264 | 927 | 2 | 19/6 |
| 49 | 49 | HOT APPLE PIE <i>We're Makin' Up (DreamWorks)</i> | 143 | 7 | 108 | +7 | 2415 | 90 | 2 | 12/2 |
| Debut | 50 | WYNONNA <i>Attitude (Asylum/Curb)</i> | 142 | 33 | 127 | +38 | 3192 | 1065 | 1 | 15/5 |

© 2005 Radio & Records

Trade In Your Old Barter.

Let us help you turn your time into money.

Visit apradio.com to learn more.





| Artist Title (Label) | TW | LW | Fam. | Burn | P 25-54 | W 25-54 | M 25-54 |
|--|------|------|------|------|---------|---------|---------|
| BILLY CURRINGTON Must Be Doin' Somethin' Right (Mercury) | 4.19 | 4.05 | 86% | 11% | 4.16 | 4.50 | 3.82 |
| CRAIG MORGAN Redneck Yacht Club (BBR) | 4.16 | 4.07 | 97% | 26% | 4.13 | 4.12 | 4.15 |
| MONTGOMERY GENTRY Something To Be Proud Of (Columbia) | 4.14 | 4.22 | 97% | 28% | 4.17 | 4.30 | 4.02 |
| GEORGE STRAIT She Let Herself Go (MCA) | 4.13 | 4.17 | 80% | 12% | 4.18 | 4.28 | 4.10 |
| JOE NICHOLS Tequila Makes Her Clothes Fall Off (Universal South) | 4.12 | 4.12 | 91% | 14% | 4.20 | 4.19 | 4.20 |
| DIERKS BENTLEY Come A Little Closer (Capitol) | 4.09 | 4.12 | 90% | 12% | 4.10 | 4.37 | 3.85 |
| RASCAL FLATTS Skin (Sarabeth) (Lyric Street) | 4.07 | 4.11 | 93% | 24% | 4.07 | 4.17 | 3.96 |
| KEITH URBAN Better Life (Capitol) | 4.06 | 4.19 | 93% | 19% | 4.10 | 4.30 | 3.90 |
| CHRIS CAGLE Miss Me Baby (Capitol) | 4.03 | 4.12 | 82% | 12% | 4.03 | 4.23 | 3.80 |
| JAMIE O'NEAL Somebody's Hero (Capitol) | 3.96 | 3.95 | 93% | 28% | 3.99 | 4.04 | 3.94 |
| KENNY CHESNEY Who You'd Be Today (BNA) | 3.96 | 4.04 | 84% | 15% | 3.96 | 4.15 | 3.77 |
| GARTH BROOKS Good Ride Cowboy (Lyric Street/Pearl) | 3.96 | — | 67% | 11% | 3.93 | 3.87 | 3.98 |
| LONESTAR You're Like Comin' Home (BNA) | 3.95 | 4.01 | 94% | 19% | 3.98 | 4.16 | 3.79 |
| GARY ALLAN Best I Ever Had (MCA) | 3.94 | 4.03 | 94% | 20% | 3.92 | 4.03 | 3.81 |
| JOSH GRACIN Stay With Me (Brass Bed) (Lyric Street) | 3.91 | 4.02 | 95% | 26% | 3.84 | 4.09 | 3.59 |
| NEAL MCCOY Billy's Got His Beer Goggles On (903) | 3.88 | 3.90 | 94% | 28% | 3.90 | 4.00 | 3.81 |
| LEANN RIMES Probably Wouldn't Be This Way (Asylum/Curb) | 3.85 | 4.01 | 95% | 28% | 3.92 | 4.01 | 3.83 |
| FAITH HILL Like We Never Loved At All (Warner Bros./Curb) | 3.85 | 3.94 | 86% | 19% | 3.86 | 4.04 | 3.70 |
| TOBY KEITH Big Blue Note (Show Dog/DreamWorks) | 3.85 | 3.67 | 81% | 17% | 3.91 | 3.83 | 3.99 |
| ALAN JACKSON USA Today (Arista) | 3.84 | 3.82 | 79% | 12% | 3.92 | 3.86 | 3.97 |
| MARTINA MCBRIDE Rose Garden (RCA) | 3.78 | 3.90 | 91% | 21% | 3.79 | 3.85 | 3.73 |
| LITTLE BIG TOWN Boondocks (Equity) | 3.76 | 3.77 | 78% | 19% | 3.68 | 3.79 | 3.58 |
| JASON ALDEAN Hicktown (BBR) | 3.75 | 3.83 | 93% | 28% | 3.69 | 3.70 | 3.69 |
| PHIL VASSAR Good Ole Days (Arista) | 3.75 | 3.83 | 86% | 21% | 3.77 | 3.91 | 3.64 |
| RYAN SHUPE & THE RUBBERBAND Dream Big (Capitol) | 3.73 | 3.69 | 73% | 17% | 3.84 | 3.86 | 3.82 |
| JO DEE MESSINA Delicious Surprise (I Believe It) (Curb) | 3.65 | 3.64 | 84% | 23% | 3.67 | 3.72 | 3.63 |
| SHOOTER JENNINGS 4th Of July (Universal South) | 3.59 | 3.87 | 84% | 28% | 3.60 | 3.65 | 3.56 |
| KEITH ANDERSON XXL (Arista) | 3.45 | — | 77% | 23% | 3.46 | 3.51 | 3.41 |
| GRETCHEN WILSON All Jacked Up (Epic) | 3.44 | 3.52 | 99% | 40% | 3.43 | 3.32 | 3.55 |

Total sample size is 335 respondents. Total average favorability estimates are based on a scale of 1-5. (1=dislike very much, 5 = like very much). Total familiarity represents the percentage of respondents who recognized the song. Total burn represents the number of respondents who said they are tired of hearing the song. Songs must have 40% familiarity to appear on survey. Sample composition is based on persons 12+. Persons are screened via the Internet. Once passed, they can take the music test based on the format/music preference. RateTheMusic.com results are not meant to replace callout research. The results are intended to show opinions of participants on the the Internet only. RateTheMusic is a registered trademark of RateTheMusic.com. The RTM system, is available for local radio stations by calling 818-377-5300. RateTheMusic.com data is provided by Mediabase Research, a division of Premiere Radio Networks.

If you experienced transmission problems ... please call our Circulation Department at 310-788-1625.

© 2005 Radio & Records. All Rights Reserved No part of this material may be reproduced in any form or incorporated in any information retrieval system without written permission of the Publisher.



JACK INGRAM

"Wherever You Are"

Already on at:

THE WOLF/Dallas **KASE/Austin**
KAJA/San Antonio **KYGO/Denver**

NO TRICKS, ONLY TREATS...
ADDS ON HALLOWEEN—MONDAY 10/31!

www.jackingram.net • www.showdognashville.com

