

TOP 40 AIRPLAY Monitor

• We Listen To Radio •

October 31, 1997 \$4.95 Volume 5 • No. 44

TOP 40 HIGHLIGHTS

MAINSTREAM

#1

SUGAR RAY

Fly (LAVA/ATLANTIC)

*** AIRPOWER ***

FIONA APPLE • *Criminal (CLEAN SLATE/WORK)*

GOING FOR AIRPLAY

AQUA • *Lollipop (Candyman) (MCA)*

GENESIS • *Not About Us (ATLANTIC)*

LED ZEPPELIN • *The Girl I Love (ATLANTIC)*

JOHN MELLENCAMP • *Without Expression (MERCURY)*

LISA STANSFIELD • *Never Gonna Fall (ARISTA)*

BARRY WHITE WITH CHRIS ROCK • *Basketball Jones (BIG BEAT/ATLANTIC)*

RHYTHMIC TOP 40

#1

USHER

You Make Me Wanna . . . (LAFACE/ARISTA)

*** AIRPOWER ***

JANET • *Together Again (VIRGIN)*

CROSSOVER

#1

USHER

You Make Me Wanna (LAFACE/ARISTA)

*** AIRPOWER ***

DRU HILL • *We're Not Making Love No More (LAFACE/ARISTA)*

GOING FOR AIRPLAY

2PAC • *I Wonder If Heaven Got A Ghetto (AMARU/INTERSCOPE/JIVE)*

AQUA • *Lollipop (Candyman) (MCA)*

EPMD • *Richter Scale (DEF JAM/MERCURY)*

FUNKDOOBIEST • *Papi Chulo (BUZZTONE/RCA)*

TIMBALAND & MAGOO • *Luv 2 Luv U (BLACKGROUND/ATLANTIC)*

UNCLE SAM • *I Don't Ever Want To See You Again (STONECREEK/EPIC)*

BARRY WHITE WITH CHRIS ROCK • *Basketball Jones (BIG BEAT/ATLANTIC)*

ADULT TOP 40

#1

PAULA COLE

I Don't Want To Wait (IMAGO/WARNER BROS.)

*** AIRPOWER ***

ELTON JOHN • *Something About The Way You Look Tonight (ROCKET/A&M)*

ADULT CONTEMPORARY

#1

LEANN RIMES

How Do I Live (CURB)

*** AIRPOWER ***

MICHAEL BOLTON • *The Best Of Love (COLUMBIA)*

GOING FOR AIRPLAY

GENESIS • *Not About Us (ATLANTIC)*

KENNY LOGGINS • *Now That I Know Love (COLUMBIA)*

JOHN MELLENCAMP • *Without Expression (MERCURY)*

MEXICO 70 • *Hate For You (BIG POPIRED ANT)*

LISA STANSFIELD • *Never Gonna Fall (ARISTA)*

Labels Rush To Acknowledge Growing Modern Adult Format, But How?

by Kevin Carter

Ever get the impression that some labels just don't know how to act in the presence of those rapidly evolving modern adult stations?

During the modern adult panel at the recent Billboard/Airplay Monitor Radio Seminar, promotion execs took the unprecedented step of actually asking PDs which label department they wanted to be worked by and when they wanted to be serviced with product. After triple-A? Before modern rock? Same time as mainstream top 40?

The overwhelming consensus

was that modern adult PDs wanted service at the same time as modern rock and triple-A. But independent promoter Jerry Lembo, who had raised the question of *who* should work modern AC, never got a straight answer. And as they try to figure it out for themselves, many labels are still developing strategies to deal exclusively with this emerging splinter format.

Many labels have opted to use their adult top 40 person to promote the new format, but Columbia has opted for VP of adult alter-

Continued on page 6

jai

I BELIEVE

A new artist
you can believe in.

Ask these stations...

Q102/Cincinnati
KALC/Denver
KMXV/Kansas City
WQAL/Cleveland
KZHT/Salt Lake City
KLLC/San Francisco
WNKS/Charlotte
WVRV/St. Louis
and *many* more

in at presstime:
"Just got our first week of
research on 'I Believe' and it was
great! Everyone should be taking
advantage of this great texture
record!"

-Julie Stoeckel,
KLLC/San Francisco

1
VH
MUSIC FIRST

medium
rotation

"GORGEOUS GUITAR TRILLS AND THE DESOLATE VOICE OF A FALLEN ANGEL." -MELODY MAKER, APRIL 1997

Chantal Kreviazuk

BDS MODERN ADULT CHART
DEBUT (30)

BDS ADULT TOP 40 CHART
(38)

**IT'S ALL
AROUND YOU!!**

RESEARCH
KZZO, SACRAMENTO:
Top 15 research in
first week of testing.

REQUESTS
KLLC, SAN FRANCISCO:
Top 5 requests after
only two weeks of airplay.

KZZP, PHOENIX:
Top 10 requests
every time it's played.

SALES
DETROIT: Sales tripled
last week; doubled again
this week. Market
CLOSED with airplay on
Q95, WPLT, 89X, CIDR.

MAJOR SPINS:

KAMX	41x	KPEK	25x
KZZP	27x	WXLE	25x
KZZO	37x	CIDR	23x
KMXB	37x	89X	33x
KLLC	20x	WVRV	26x

S U R R O U N D E D

THE NEW SINGLE FROM THE ALBUM "UNDER THESE ROCKS AND STONES"
"...ONE OF THE MOST COMPELLING DEBUTS OF THE YEAR." - BILLBOARD

O N T O U R W I T H R O N S E X S M I T H .

PRODUCED BY PETER ASHER / WALT WALLACE MANAGEMENT, CHRISTINA GERR & IRA KOSLOW FOR PHO ARTIST MANAGEMENT, INC. AND CHRIS MORRIS-KATFREY & DANNY SCHUB FOR THE SCHUBBURKE GROUP
<http://www.music.com/music/artists/ChantalKreviazuk/index.html> "COLUMBIA" REG. U.S. PAT. & TM. OFF. MARCA REGISTRADA. © 1997 SONY MUSIC ENTERTAINMENT INC.

COLUMBIA

Jacor Buys Nationwide For \$620 Mil

Jacor Communications has announced the \$620 million purchase of Nationwide Communications' 17 radio stations in eight markets. Those stations were put on the block several weeks ago. The move would bring Jacor to 189 stations, including NCI top 40 WNCI Columbus, Ohio, and ACs KDMX Dallas, KHMV Houston, and KZZP Phoenix. Jacor says it will be forced to divest stations in San Diego and perhaps Columbus.

In other sales news, Sinclair has signed an LMA to buy AC/oldies combo WLTS/WTKL New Orleans from Ed Munoz's Phase II for \$29 million. That will give Sinclair six New Orleans FMs, including adult top 40 WEZB (B97) and AC rival WLMG (Magic 102), until it divests some, at the Justice Department's behest.

Triathlon Broadcasting has retained investment banker Goldman Sachs to look into a possible sale or merger of the company. In other sales news this week, Regent Communications merges with Flint, Mich., station owner Faircom Inc.

SLEEPING WITH THE ENEMY, PT. 14

Just in case you still thought consolidation was going to be easy: WXYV Baltimore reports that a bit from a recent morning-show contest ran afoul of soon-to-be-co-owned WWMX (Mix 106.5). WXYV was running a contest in which a listener's winning voice-mail about WXYV contained drops and

promos from other stations, including Mix 106.5, followed by the winner's attack on those stations. Not surprisingly, WWMX didn't like the bit very much; following WWMX's complaints, it's now been recut with the attacks on Mix removed. Meanwhile, local talent agent Rachel Muni is now doing entertainment updates on WXYV's morning show.

PROGRAMMING: MARINO TO PLANET

Modern adult KMXB (Mix 94.1) Las Vegas PD Mike Marino is named PD of SFX Broadcasting's similarly formatted KKPN (the Planet) Houston, replacing John Cook. KMXB APD/MD Kevin "Kozman" Koske is interim PD.

In Little Rock, Ark., Clear Channel flips country KDDK's old frequency to top 40 KQLR (Q100), which will lean modern AC, but play all the hits. John Roberts, PD of Clear Channel's Austin, Texas, stations, is consulting. Michael P. from sister KMJX will oversee programming.

Mark Adams, PD of rhythmic top 40 KBOS (B95) and sports KCBL (the Ball) Fresno, Calif., segues to Milwaukee as PD of modern adult WXPT (the Point), replacing Chris Kerr.

Jerry Clifton's New Planet Radio finally unveils its new top 40, KXME (Xtreme Radio @104.3) Honolulu. Market vet Jamie Hyatt (ex-KQM, KIKI) is aboard as MD/middays, following the morning team of Kid Leo and Jimmy Da Geek, formerly of cross-island KCCN. Afternoons is K.C. from KOKU (Hitradio 100) Guam, nights is handled by Big Mama from KYLZ (Wild 106) Albuquerque, N.M., and overnights is Samson from crosstown KIKI (194).

Meanwhile, over at KQM, PD Kimo Akane has indeed begun to filter in more mainstream titles while retaining a rhythmic edge. The station also welcomes new MD Kathy Nakagawa from crosstown Japanese outlet KORL (FM99.5). MC Eric "Kool E." Bunda picks up overnights. Sam the Man joins for nights from crosstown KIKI,

replacing Kutmaster Spaz, who exits.

KZFM Corpus Christi, Texas, APD/MD Tony Manero lands his first PD gig, taking the reins of rhythmic top 40 KKSS Albuquerque, N.M., replacing Randy Savage. Manero will also pick up an air shift to be determined. No replacement for Manero yet; packages to consultant Bob Mitchell.

Lots more change in Albuquerque this week, as modern adult KPEK (the Peak) PD Nick Malloy announces his plans to leave radio. He'll stay with the station through Dec. 1. Also, crosstown adult top 40 KKOB-FM PD Brad Barrett exits.

Programming veteran Cary Pall, last PD of ABC's now-defunct modern adult format MR-35, is the new PD for Alan Goodman's Goodstar Broadcasting, based at its Colby, Kan., stations.

KSLY-FM (Sly 96) San Luis Obispo, Calif., which had segued to modern rock over the past two years, is evolving back to mainstream top 40, according to PD Dave Christopher. Powers still include Sugar Ray, Smash mouth, Jewel, Sarah McLachlan, and Chumbawamba. Those are now joined by Robyn, Spice Girls, and Hanson. KSLY has also dropped its previous imager, "the

new music alternative," in favor of "Sly 96, the 50-minute music station."

Nassau Broadcasting's WSBG Stroudsburg, Pa., is in the process of refocusing from mainstream to adult top 40, says senior VP of programming Michelle Stevens. P.m. driver Sunny Joe Stevens exits.

WZPL Indianapolis switches consultants to Zapoleon Media Strategies.

PEOPLE: HE'S RICH

Barring any last-minute snags at press time, says PD Rob Morris, expect AC WYXR (Star 104.5) Philadelphia APD/MD Rich Davis to return to top 40 as APD/MD at KDWB Minneapolis.

KKBT (the Beat) Los Angeles APD Maurice Devoe is named MD at WPGC-FM Washington, D.C. Meanwhile, on the heels of Darren Davis' recent promotion to PD of Chancellor AC WASH, middayer Scott Brady adds APD stripes.

Mike Opelka, formerly of WHTZ (Z100) New York and most recently the local Fox-TV affiliate, is named executive producer for mornings on WKTU New York, replacing Joey B. Meanwhile, The New York Daily News reports that WKTU is mulling the future of its morning show when host RuPaul's contract expires at year's end. WKTU PD Frankie Blue tells the paper, "We love Ru and Ru loves 'KTU; the only issue is Ru's time."

At top 40 KDRE (Z101) Little Rock, Ark., GM Neal Ardman comes off mornings. He's replaced by veteran voice-over guy Bob Brown and Vince Bailey, previously with R&B rival KIPR.

After a few weeks in test rotation, WMBX (Mix 102.3) West Palm Beach, Fla., officially moves former p.m. driver Taylor Morgan to morning co-host, with interim co-host John Taylor. Scott Davidson moves from nights to afternoons, while Ed Elder is upped from P/T to overnights.

WBHT (Hot 97) Wilkes-Barre, Pa., midday jock Mark McCarthy is upped to MD/afternoons, replacing Danny Ocean.

Rhythmic top 40 KISV (Kiss 94.1) Bakersfield, Calif. PD Mark Feather hires Phil Marks from P/T at KBOS for middays/production... WFLY Albany, N.Y., newswoman Carolin Brown crosses to triple-A WXLE for the same.

School Buses Now Only Run At Night



For years, WBZZ (B94) Pittsburgh has zealously guarded the radio faces of the John/Dave/Bubba/Shelley morning show. For reasons still unclear to us at press time, somebody, somehow, greenlighted this billboard campaign. To soften the blow to unaware commuters, wads of cash are, of course, included. Shown, from left, are John Cline, Dave Cook, Bubba, and Shelley Duffy.

TOP 40 TOPICS

BY SEAN ROSS

212-536-5264 • sross@billboard.com

Rhythmics Pick A Format, Any Format

Last week, XHTZ (Z90) San Diego was the latest in an ongoing stream of rhythmic top 40s to drop most of their dance product and concentrate on young-end R&B with a heavy dose of hip-hop. In doing so, Z90 was following the lead of KKFR (Power 92) Phoenix; KCAQ (Q104.7) Oxnard, Calif.; KPWR (Power 106) Los Angeles; and even crosstown KHST (Channel 93-3), which has reduced its dance content sharply over the last year.

Break down the rhythmic top 40 panel now and you'll find three types of stations: those that have decided to own the R&B franchise in their market; those that play mostly R&B but make an exception when a "Barbie Girl" or "2 Become 1" comes along; and a decreasing number of variety-based top 40s that just happen to be in Hispanic-dominated markets and play R&B, dance, and even an occasional rock record. The latter stations will play "Fly" by Sugar Ray when it reaches critical mass. The middle clump of stations are thinking about it. The first are unlikely to even discuss it.

Throughout its history, which goes back to the disco stations of the late '70s, rhythmic top 40 has tried to be a separate animal unto itself, but the stations that program it have usually drifted toward either R&B or top 40. In the late '80s, when freestyle and dance/pop were at a peak, many of them found that balance for a while. By the early '90s, most of the churban stations in heavily black markets realized that they could no longer compete with mainstream R&B stations without becoming one. Stations in Hispanic markets—where nobody was likely to launch a full-fledged mainstream R&B station—had the luxury of commanding several franchises—R&B, dance, and top 40—for a little longer, especially if there was no competition on any of those flanks.

Some of those stations, Z90 and Power 92 in particular, did get competition and finally decided to focus on R&B to blast through the resulting wars of attrition. Power 106, however, seems to have launched itself into a war of attrition with an R&B rival, KKBT (the Beat), on the apparent belief that there was no future in being the Artie the One Man Party station. Was it a good move? Well, KPWR was ahead of KKBT again in the summer Arbitron sur-

vey. Then again, both stations were off from a year ago, when they had distinct franchises—the Beat as an R&B/hip-hop station and Power as a variety station for 18-24 Hispanics.

So is the opportunity to play rhythmic top 40 in its purest form—a variety station that plays everything but rock—gone? In many places, yes. At least for now. There aren't a lot of Hispanic markets where straight-ahead, hip-hop-driven R&B radio won't work, and a lot of stations are apparently realizing that they have to superserve that franchise or lose it. There's also a product issue. At this particular moment, there aren't many pop/dance hits, and there are a lot of modern rock crossovers, meaning that even a rhythmic station that wants to cast a broader net is confronted with the prospect of playing 27 R&B records and Smash mouth or Chumbawamba. That being the option, it's easier for most PDs to focus on R&B.

The second-easiest choice is true top 40—playing the rhythmic records early, but all the hits eventually. PDs once figured that they could interrupt the dance and R&B records with the most neutral pop crossovers—a Bryan Adams or Celine Dion, for instance. Then they tried Alanis Morissette. Now, those stations that haven't decided to get out of the pop business altogether have broadened the scope to Sugar Ray and lived. All of which suggests that the listeners who choose a variety station, rather than a pure R&B station, want to hear all the hits, not just those that fit a specific sound. So why not play Smash mouth or Chumbawamba, too, once they're big enough?

Because they've been through so many changes in recent years, PDs are now, one suspects, smart enough to realize that what we're seeing on the charts doesn't represent a wholesale change in listener tastes; it's just the available product this week. Even as you read this, there are rhythmic records developing that will likely be in mainstream top 40's powers six to eight weeks from now. By then, some of the rhythmic top 40s that are on the cusp of R&B this week will again be casting a longing eye at those songs and wondering if they can play them. Many will do what rhythmic top 40 has done for the last 15 years, fluctuate again based on the available product. But the number of stations likely to have that option indefinitely is shrinking.

ON THE AIR

Effective this week, WNSR New York (acting PD Jim Ryan, 212-704-1051) is removed from the modern adult panel. The station continues to report to the adult top 40 panel. There are now 40 modern adult and 65 adult top 40 reporters.



WHAT'S NEWS

by Theda Sandiford-Waller

212-536-5053 • theda@billboard.com

Napoliello Joins A&M; Work Ups Reese

MUSICAL CHAIRS: Former EMI senior VP of promotion **Peter Napoliello** joins A&M in the same capacity . . . Work has formally announced **Dennis Reese's** ascension to the VP of promotion post . . . Atlantic ups 15-year label veteran **Lisa Velasquez** to senior VP of crossover promotion . . . Columbia New York local **Pete Cosenza** gets national promotion duties.

Sean Renet joins Revolution from Nation Music Marketing to head the alternative promotion department . . . **Doug La Gambina** joins Red Ant as national director of alternative promotion . . . **Matt Smith**, formerly of London, heads to DreamWorks to helm the alternative promotion department . . . Arista bumps **Cathy O'Brien** up to VP of international . . . Sony Music announces the promotion of **Ann Petrone** to director of promotional purchasing . . . At Zomba Music Publishing, **Paula Krause** is upped to associate director of business affairs; she'll oversee the new film and TV publishing department.

Lisa Cortes, former president of Loose Cannon, has been busy at film school. Her first short, "Tootsie Rollin'," was screened in New York Oct. 21.

INK: On Nov. 25, Jive will release "R U Still Down (Remember Me)" a double album of **2Pac's** previously unreleased masters that Death Row recently turned over to Shakur's estate. The first single, "I Wonder If Heaven Got A Ghetto," goes to radio Nov. 3.

ARTIST MONITOR: Not surprisingly, **Spice Girls** will have their own dolls out just in time for the holiday season . . . If your memory serves you well, you'll remember that **Taja Sevelle** was once a Paisley Park artist, charting with "Love Is Contagious" in 1987 . . . According to British newspaper The Sunday Telegraph, **Elton John** is planning to collaborate with **Ingrid Sischy** of Interview magazine to write his memoirs . . . Did you know that **matchbox 20** front man **Rob Thomas** was homeless for three years? He eventually formed the group with a few of his other unemployed friends . . . After an exclusive theatrical release in three markets, Island Jamaica Films releases its first film, "Dancehall Queen," to video Oct. 28 . . . **Cyndi Lauper** is in talks with NBC about developing a sitcom. She won an Emmy for her portrayal of Ira's ex-wife on "Mad About You." Look for Rolling Stone's "Women Of Rock" issue, with **Madonna**, **Tina Turner**, and **Courtney Love** gracing the cover, on newsstands this week.

Birdie In Both Hands Worth Two More Acts



Chancellor Media recently held a gala record label reception in New York in order to procure acts for upcoming Christmas shows at both **WHTZ (Z100)** New York and **WXKS-FM (Kiss 108)** Boston. Pictured, from left, are **Z100 PD Tom Poleman**, **WKTU/WHTZ New York GM John Fullam**, Chancellor senior VP of regional operations **John Madison**, **Kiss 108 PD John Ivey**, and Chancellor VP of marketing **Bev Tilden**. (Photo: Theda Sandiford-Waller)

EDITOR IN CHIEF: HESTON HOSTEN
 EDITOR: SEAN ROSS
 MANAGING EDITOR: KEVIN CARTER
 DIRECTOR OF CHARTS: THEDA SANDIFORD-WALLER
 ASSOCIATE DIRECTOR OF CHARTS: STEVEN GRAYBOW
 WRITER/REPORTER: DANA HALL
 CHART PRODUCTION MANAGER: MICHAEL CUSSON
 ASST. CHART PRODUCTION MANAGER: ALEX VITOULOS
 EDITORIAL PRODUCTION MANAGERS: BARRY BISHIN, MARCIA REPINSKI
 EDITORIAL PRODUCTION: SUSAN CHICOLA, MARC GIAGUINTO
 SARAH JOHNSON, MARIA MANLICIC
 COPY EDITOR: CARL ROSEN
 ADVERTISING PRODUCTION MANAGER: LYDIA MIKULKO
 ASSOC. ADVERTISING PRODUCTION MANAGER: CINDEE WEISS
 ADVERTISING ART DIRECTOR: RAY CARLSON
 ADVERTISING PRODUCTION ARTIST: SHIRA HALFON

GENERAL MANAGER: JON GUYNN
 ACCOUNT MANAGER: JEFF SOMERSTEIN
 ADVERTISING SERVICES MANAGER: ALYSE ZIGMAN
 SALES ASSISTANTS: EVELYN ASZODI, ERICA BENGTON,
 TODD MAYCHER

EDITORIAL ADVISER: TIMOTHY WHITE
 PRODUCTION DIRECTOR: MARIE GOMBERT
 DIRECTOR OF MARKETING: ELISSA TOMASETTI
 CIRCULATION DIRECTOR: JEANNE JAMIN



PRESIDENT: HOWARD LANDER
 SENIOR VP/GENERAL COUNSEL: GEORGINA CHALLIS
 VICE PRESIDENTS: KAREN OERTLEY, ADAM WHITE
 DIRECTOR OF STRATEGIC DEVELOPMENT: KEN SCHLAGER
 BUSINESS MANAGER: JOELLEN SOMMER

©1997 BPI Communications
 1515 Broadway, New York, NY 10036 212-764-7300
 5055 Wilshire Blvd., 7th floor, Los Angeles, CA 90036 213-525-2300
 For subscriptions call: 800-722-2346

Airplay Monitor reporting panels are based solely on a station's musical content.

RADIO CONCERT MONITOR

DATE	CALL LETTERS	EVENT	SCHEDULED TO APPEAR
Oct. 31	WZPL Indianapolis	Boo Bash	Blessid Union
Oct. 31	KIIS Los Angeles	Halloween Scream	Meredith Brooks
Oct. 31	KIIS	West Hollywood Bash	Salt 'N Pepa
Nov. 1	WJJS Roanoke, Va.	Monster Jam 3	Brownstone, Destiny's Child, K-Ci & JoJo, Billy Lawrence, Next, Uncle Sam
Nov. 1	WKTU New York	Saturday Night Fever 20th Anniversary	Bee Gees, KC & the Sunshine Band, Yvonne Elliman, Kool & the Gang, Tavares, Trampms, more
Nov. 1	WNVZ Norfolk, Va.	Z104 Night	K7
Nov. 6	WNVZ	Z104 Night	Lil' Suzy
Nov. 13	WNVZ	Z104 Night	Nu Flavor
Nov. 15	WHYI (Y100) Miami		Hanson, more
Nov. 17	WWMX Baltimore	JoJo & Kenny's B-day	Duncan Sheik, Sister Hazel, Toad The Wet Sprocket
Nov. 22	WNVZ	Z104 Night	Planet Soul
Nov. 29	WNVZ	Z104 Night	Corona
Dec. 4	WPXY Rochester, N.Y.	X-Mas Show	Shawn Colvin, Lisa Loeb, more
Dec. 9	WHTZ (Z100) New York	Jingle Ball	Fiona Apple, Chumbawamba, Sarah McLachlan, Wallflowers, more
Dec. 10	WXKS (Kiss 108) Boston	Acoustic Kiss-mas	TBA
Dec. 12	WNVZ	Z104 Night	Wild Orchid
Dec. 17	KIIS	Rick Dees' Kiss-mas	TBA
Dec. 18	WFLY Albany, N.Y.	Jingle Bell Rock	She Moves, Third Party, more

Let us monitor your event! Kevin Carter: 213-525-2303 or E-mail KCarter@billboard.com

Hall And Oates Get The 'PLJ Push



Daryl Hall and John Oates tour the spacious hallways of **WPLJ** New York. Pictured, from left, are **Push Records' VP of promotion David Morrell**, independent promoter **Jerry Lembo**, morning co-host **Todd Pettengill**, **Push Records** president **Brian Doyle**, **Hall**, **PD Scott Shannon**, news director **Naomi DiClemente**, and **Oates**.

House Music Stronghold Becomes House Of Usher



WBBM-FM (B96) Chicago welcomes **LaFace/Arista** recording artist **Usher**. Pictured, from left, are **B96 MD Erik Bradley**, **Usher**, and **Arista Midwest** promo legend **Denise Lutz**.

WE'RE HONORED!

Rick Dees

**Weekly
Top
40**



Billboard & Monitor AIRPLAY #1
Double RADIO AWARD WINNER

RICK DEES

*LOCAL
AIR PERSONALITY
OF THE YEAR*

TOP 40 - MAJOR

*NETWORK/SYNDICATED
PROGRAM OF THE YEAR*

ADULT

Thank You!

For more information, call Tom Shogan or Ramona Rileott at Radio Today (212) 581-3962



Distributed by



World Radio History

Labels Rush To Acknowledge Growing Modern Adult Format, But How?

Continued from page 1

native Kid Leo. And modern adult radio may now be approached shortly after triple-A starts a title as part of a strategy that targets several formats at once (or overlooks format distinction) or by itself, depending on the song.

A look at three recent RCA projects shows the gamut of approaches to modern adult radio. New artist Jai was worked first to modern adult only. Behan Johnson was worked first to triple-A but warmed up with modern adult PDs (some of whom are dual reporters to triple-A); now that the song has charted at triple-A, RCA has set a modern adult impact date of Oct. 27. And Olive's "You're Not Alone" was part of a strategy that targeted specific stations, not formats, within the top 30 markets.

"I'm still learning as I go," admits RCA Records VP of national promotion and operations Geary Tanner, who recently added modern adult and adult top 40 promotion stripes. "When [senior VP] Ron Geslin started here, he decided that we needed somebody who would be dedicated to those formats. We feel that modern adult is a format, but, regardless of whether or not anybody else thinks it's a format, we know that there are radio stations out there who are playing this type of music, some more aggressively than others, and we felt these stations deserved more attention than they were getting from this company.

"Although I feel the modern adult format is still fairly conservative, the potential is always there for someone to break a record if they wanted to," Tanner adds. Sure, he admits, servicing modern adult stations concurrently with triple-A may be too early for some more conservative PDs, "but if one modern adult programmer likes it and responds positively, the early service was worth it."

Columbia's Leo has a longstanding interest in the success of modern adult. "I always felt that a hit-based version of triple-A could become a viable entity," he says. "Although the format is somewhat disjointed right now, there are certain records that will strike a chord with every station on the panel. Recent history has shown that an artist can break out of this format, which, like triple-A, is able to step out and foster new music and new talent." To that end, Columbia took Chantal Kreviazuk's "Surrounded" to modern adult first. Its initial success there will now power the label's mainstream marketing efforts.

At Warner Bros., the development of modern adult radio led to the mainstream AC and adult top 40 jobs—traditionally handled together—being split up some time ago. While Valerie Moses works AC, Warner Bros. recently named Marcia Welch national director of adult top 40 promotion, which includes the modern adult world.

In an attempt to superserve modern adult outlets, Welch has gone as far as isolating those specific stations from of the label's regular adult top 40 mailing list. "We formed our own in-house list in order to ship 'the cool stuff,' like Cornershop and Jen Trynin," she says. And with dual reporters to the triple-A and modern rock panels, Welch notices the cross-pollination. "Most of the modern adult stations I talk to tell me that they like to at least keep an eye on what the triple-A and the modern rock outlets are up to."

Despite the interest in watching triple-A and modern rock, Welch says, "I'm also seeing instances where just because a heritage artist does well at triple-A, some people assume that artist will now automatically fly at modern adult. . . . Triple-A has traditionally been viewed as a male-based format, whereas modern adult is a female-based format. I'm still seeing people trying to make modern adult a clear-cut format, which it's not, at least at this stage."

YOU OUGHTA KNOW

Because Airplay Monitor's modern adult panel at this moment encompasses stations that dual-report to the mainstream top 40, adult top 40, triple-A, and modern rock panels, most label strategies for modern AC require communication throughout several departments.

So while Art Phillips heads up RCA triple-A promotion and Ron Poore oversees modern rock, Tanner reminds us that, while the total picture is ultimately funneled through him, most of the panel is still composed of adult top 40 reporters who are being worked by the same pop promo reps as always. It's the same story at Warner Bros., says Welch. With the exception of the few triple-A and modern rock stations on the panel, Welch says, the lion's share of that panel remains under her adult top 40 jurisdiction, although she adds that it's an accepted in-house practice for her to be able to make a backup call to certain modern rock reporters, all with the blessing of Tom Biery, VP of modern rock.

Through it all, some basic rules of intramural protocol remain: "No matter what my priorities happen to be at modern adult, when dealing with any musical overlap into the triple-A and modern rock departments, I'll always defer to their own priorities first," says Tanner.

"Never assume we're in the radio business; we're in the record business," Atlantic Records senior VP of promotion Danny Buch likes to tell his staff. "Every day we're seeing more splinter formats, and in order for labels to mirror those changes and create separate departments to parallel those formats is difficult, because those formats are always changing," says Buch.

For example, Buch says, triple-A honcho Bonnie Slifkin "is not head of triple-A 'radio'; her job is to find outlets to expose the music pertinent to that particular genre. By the same token, [modern rock VP] Gary Spivack's job is to find the proper places to expose our alternative-leaning product."

Columbia's Leo says, "A smart company will forget about who's dealing with what stations and reply upon existing relationships. It would be absurd not to utilize those strengths." But, he adds, "we're still defining this whole thing for ourselves as this format becomes more defined."

LOCAL HEROES

As for the man who raised this question publicly, veteran promoter and industry observer Lembo suggests a strategy in which format designation is secondary. "Don't market to a format—instead, create a marketing plan that's specific to the marketplace," says Lembo, who foresees the roles of both the label's local promotion manager and the local radio market manager becoming more important than ever.

"The local promotion manager is able to take the pulse of the market and better orchestrate appropriate delivery dates," he says. "They've always been the most sensitive to the infrastructure of the individual marketplace."

Add deregulation to this mix, and, Lembo says, in markets with three or four formats under one programmer, promotion will have to be done differently than ever before: "Instead of a label deciding when certain stations can best use a record, we'll approach the local market manager and let them decide the best time for each of their stations to receive it. Whether it's today or eight weeks from now, we'll be able to take advantage of that extra lead time. What's the worst thing that can happen? That somebody might play your record early?"

MONITOR PROFILE

Y101's Dick O'Neil Infects Hit-Starved Jackson, Miss., With Top 40 Fever

After a five-year top 40 drought in Jackson, Miss., Dick O'Neil is smiling broadly. As the multiple-hat-wearing OM/PD and now GM of top 40 WYOY (Y101), O'Neil presides over a station that's basically gone from zero to 60 in less than a year. Just-released summer Arbitron ratings show Y101 leaping 4.4-7.2 12-plus, lodging third in the market, behind R&B powerhouse WJMI (14.9) and Capstar country outlet WMSI (10.5). In the all-important 18-34 arena, Y101 moves 7.0-10.7, good enough for No. 2.

O'Neil blew into town Oct. 15, 1996, after a decade of programming the late WTNY-FM Watertown, N.Y., a heritage top 40 that, after debuting in '86 to a 30 share, was No. 1 until new owners blew it up last year.

So, why top 40? Why now? "Because [consultant] Jan Jeffries and Eddie Holladay saw a massive, gaping hole," says O'Neil. Holladay is a principal of New South Radio, owner of some 20 stations primarily in Louisiana, Mississippi, Alabama, and Florida.

Using five years of hindsight, they soon figured out why the last top 40 in the market

more broad-based and more gold-intensive when it signed on," says O'Neil, who says he purged a bunch of titles, including AC-leaning product, on arrival.

Y101's music mix now leans to the modern adult side, with a couple of mass-appeal rhythmic gold cuts. Here's a recent 4 p.m. hour: Sarah McLachlan, "Building A Mystery"; Sugar Ray, "Fly"; TLC, "Waterfalls"; Blues Traveler, "Run Around"; Savage Garden, "Truly, Madly, Deeply"; matchbox 20, "Push"; Jewel, "You Were Meant For Me"; Chumbawamba, "Tubthumping"; Natalie Merchant, "Carnival"; Human League, "Don't You Want Me"; Third Eye Blind, "Semi-Charmed Life"; Paula Cole, "I Don't Want To Wait"; and dog's eye view, "Everything Falls Apart."

O'Neil was named OM of Y101, AC sister WJKK (Luv 98), and AM oldies WIIN in October '96. In February '97, Holladay took him to lunch and upped him to GM. "Eddie's like a 16-year-old kid when it comes to his enthusiasm for this business," says O'Neil, who credits WTNY GM Don Alexander as his role model for his new job. As expected, O'Neil is learning firsthand that GM duties come complete with 12-hour days and nonstop meetings, leaving him less free time to deal with stuff like, say, programming. "I've learned to delegate, and believe it or not, I still make time to listen to music," he says. "Besides, at the risk of sounding cliché, anyone on this air staff could be the PD tomorrow."

That staff includes original equipment John O'Leary, whom O'Neil brought with him from WTNY, in afternoons. Kevin Kasey, former PD of WNSL Hattiesburg, Miss., is MD/nights; middayer Mandy Morgan also hails from WNSL. The Y101 morning show is anchored by Mike Montana, last seen at KGGI Riverside, Calif.

So despite being owned by a small, privately held company, WYOY was still able to pull out all the stops in its recent promo campaign, doing all the top 40 tricks: cash, cars, billboards, TV, direct mail, and bumper stickers. All this while parked across the street from a heavily armed Capstar, which owns, among others, country outlets WMSI and WKTF and Y101's most direct competitor, adult-targeted WJDX, which dropped 4.9-4.3 in the recent book. "Over the past eight months, they moved from hot AC to mainstream AC, but over the past few weeks, they've moved back to hot AC, maybe even a little hotter than they were originally," O'Neil observes. "Right now, they're in a tough spot, with Y101 dominating their young end, while our AC is attacking their upper end. It's a dilemma, because whichever way they end up moving, one of our stations benefits. I have the greatest respect for what Capstar does, but we were able to fill a void that was sitting right here in this market."

OK, so in less than a calendar year your station has gone from a vacant lot to third place. Does O'Neil, flushed with success, believe that Y101 has a realistic shot at that elusive No. 1? "Absolutely," he says. "I see no reason why a top 40 station shouldn't be No. 1 in a market like this. Top 40 is one of the higher-cuming formats just by its nature, and as long as we're superserving our core, there's no reason for us to have low expectations." Although, he adds, "maintaining a 7 share is going to be much harder than getting there in the first place. But I've been doing top 40 long enough and have been in some heritage situations. . . . We're just settling in here for a good long battle."

KEVIN CARTER



Dick O'Neil
GM/OM/PD
WYOY Jackson, Miss.

'We just put a top 40 station on the air and let them come to that conclusion themselves'

(WKQB, now second Capstar country outlet WKTF) evaporated. "Simply put, they had become too urban," says O'Neil. "Too many people told us the same story. At the time, B95's percentage of urban and dance product was much too high. Just because the ethnic composition of this market is almost 50%, it doesn't mean they're listening," he adds. "The available ethnic audience already has WJMI—they weren't tuning in, and the rest of the market preferred a rock and alternative-based approach. Thankfully, we were able to discover that and make the necessary adjustments."

Since there hadn't been a top 40 in the market for five years, O'Neil admits that many listeners didn't know how to perceive his station. Some male listeners heard Y101 playing what now passes for modern adult acts and figured they were listening to a new modern rock station. A wake-up call soon followed. "We had to let them know that top 40 was a female-oriented format," says O'Neil. "When these guys heard us playing Hanson and Spice Girls, they weren't sure what was going on."

In order to position the new Y101, O'Neil decided on a comparatively generic marketing approach: "While we played music clips and listener comments on the air, we never once used the terms 'hit radio' or 'top 40,'" he says. "We just put a top 40 station on the air and let them come to that conclusion themselves."

Consultant Jan Jeffries of Burkhart/Douglas supervised the flip to automated top 40 in August '96. By December, the station was live from 6 a.m. to 7 p.m. It wasn't until February that Y101 was fully staffed. "The station was

"GIVE UP THE GHOST"

"TAMIKA"

"I'M NOT A FOOL"

"EXTRA EXTRA"

(W/KEITH SWEAT)

"24/7"

(W/MARC GORDON OF LEVERT)

"CAN'T YOU SEE"

(PRODUCED BY RODNEY JERKINS)

"OOH WEE BABY"

(W/ DAZ FROM THA DOGG POUND)

KPWR

KBXX

KYLD

WWKX

WHHH

KDGS

WJJS

KBOS

WBHT

KCAQ

WJBT

WKXJ

WBTT

KHTN

KWIN

KWNZ

WOCQ

i mmature

THE JOURNEY

Record Turnout Sparks The 1997 Billboard/Airplay Monitor Radio Seminar & Awards

More than 950 radio programmers, personalities, and record label executives attended the Billboard/Airplay Monitor Radio Seminar and Awards Oct. 16-18 in Orlando, Fla., setting a new attendance record for the event. Some of the Top 40 highlights were captured in these photos.



The Top 40 Panel: Pictured, from left, are Airplay Monitor editor/moderator Sean Ross; KKRZ (Z100) Portland, Ore., PD Ken Benson; WXXL (XL106.7) Orlando PD Adam Cook; WKTU New York PD Frankie Blue; WHTZ (Z100) New York PD Tom Poleman; consultant Bill Richards; KIIS Los Angeles PD Dan Kieley; WWZZ (Z104) Washington, D.C., PD Dale O'Brian; and Top 40 Airplay Monitor managing editor Kevin Carter.



Back To School Panel: Shown in the back row, from left, are Top 40 Airplay Monitor managing editor/moderator Kevin Carter, American Management Assn.'s Joanne Capritti, and Billboard radio editor Chuck Taylor. In the front row, from left, are consultant Guy Zapoleon; MCA Records senior VP Nancy Levin; SFX Raleigh, N.C., OM Brian Burns; consultant Dave Shakes; and Pyramid Resources' Jaye Myrick.



Top 40 Airplay Monitor managing editor Kevin Carter is the filling in a love sandwich between award-winning WPLJ New York PD Scott Shannon, left, and his former WHTZ (Z100) protégé Frankie Blue, named PD of the year for his work at WKTU New York.

Billboard & Monitor AIRPLAY Radio Seminar & Awards



Keynote speaker Andy Schuon, executive VP of programming, MTV Networks.



Sleeping With The Enemy: Shown, from left, are Top 40 Airplay Monitor managing editor Kevin Carter; KMEL San Francisco PD Michelle Santosuosso; Chancellor pen-pal Michael Martin, PD of crosstown KYLD (Wild 94.9); and Airplay Monitor editor Sean Ross. In the front row, wearing each other's call letters, from left, are newfound Jacorpals WFLZ Tampa, Fla., PD Jeff Kapugi and WAKS Tampa PD/morning guy Mason Dixon.



Modern Times For AC: Pictured in the back row, from left, are Top 40 Airplay Monitor managing editor Kevin Carter, promotion honcho Jerry Lembo, consultant Randy Lane, WPLT Detroit PD Garrett Michaels, and Billboard AC/modern adult chart manager and moderator Steve Graybow. In front, from left, are WWMX (Mix 106.5) Baltimore PD Adam Goodman; KYSR (Star 98.7) Los Angeles PD Angela Perelli; WALC (Alice @104.1) St. Louis PD Bob Davis; Jacobs Media consultant Dave Beasing; and Billboard radio editor Chuck Taylor. (Not pictured, KZZO Sacramento, Calif., PD Carmy Ferreri)

SUMMER '97 ARBITRONS

12-plus overall average quarter hour shares (#) indicates Arbitron market rank. Copyright 1997, Arbitron Ratings Co. May not be quoted or reproduced without the prior written permission of Arbitron.

Table for SAN ANTONIO, TEXAS (34) with columns for Call, Format, Su '96, Fa '96, W '97, Sp '97, Su '97. Includes stations like KTFM, KZEP-FM, KTSB, etc.

Table for ORLANDO, FLA. (38) with columns for Call, Format, Su '96, Fa '96, W '97, Sp '97, Su '97. Includes stations like WWKA, WJHM, WMOG, etc.

Table for GREENSBORO, N.C. (41) with columns for Call, Format, Su '96, Fa '96, W '97, Sp '97, Su '97. Includes stations like WTQR, WJMH, WQMG-FM, etc.

Table for RALEIGH, N.C. (48) with columns for Call, Format, Su '96, Fa '96, W '97, Sp '97, Su '97. Includes stations like WDCG, WQOK, WFXC/WFXK, etc.

Table for WEST PALM BEACH, FLA. (49) with columns for Call, Format, Su '96, Fa '96, W '97, Sp '97, Su '97. Includes stations like WEAT-FM, WIRK, WJRW, etc.

Table for AUSTIN, TEXAS (51) with columns for Call, Format, Su '96, Fa '96, W '97, Sp '97, Su '97. Includes stations like KASE, KHFI, KLBJ-FM, etc.

Table for JACKSONVILLE, FLA. (53) with columns for Call, Format, Su '96, Fa '96, W '97, Sp '97, Su '97. Includes stations like KICE, KELG, KYET-AM, etc.

Table for GREENVILLE, S.C. (59) with columns for Call, Format, Su '96, Fa '96, W '97, Sp '97, Su '97. Includes stations like WSSL, WJMJ, WESC-FM, etc.

Table for SCRANTON, PA. (62) with columns for Call, Format, Su '96, Fa '96, W '97, Sp '97, Su '97. Includes stations like WKRF/WKRF, WGGY, WNGS, etc.

Table for McALLEN, TEXAS (63) with columns for Call, Format, Su '96, Fa '96, W '97, Sp '97, Su '97. Includes stations like KGBT-AM-FM, KBFM, KJWW, etc.

Table for FRESNO, CALIF. (64) with columns for Call, Format, Su '96, Fa '96, W '97, Sp '97, Su '97. Includes stations like KMI, KBO5, KSKS, etc.

Table for GRAND RAPIDS, MICH. (66) with columns for Call, Format, Su '96, Fa '96, W '97, Sp '97, Su '97. Includes stations like WLAY, WBCT, WGRD, etc.

Table for EL PASO, TEXAS (69) with columns for Call, Format, Su '96, Fa '96, W '97, Sp '97, Su '97. Includes stations like KLAQ, KPRR, KBNA-AM-FM, etc.

Table for ALBUQUERQUE, N.M. (71) with columns for Call, Format, Su '96, Fa '96, W '97, Sp '97, Su '97. Includes stations like KRST, KROB-AM, KZSS/KZRR, etc.

Table for HARRISBURG, PA. (73) with columns for Call, Format, Su '96, Fa '96, W '97, Sp '97, Su '97. Includes stations like WNNK-FM, WHP, WRRV, etc.

Table for COASTAL N.C. (80) with columns for Call, Format, Su '96, Fa '96, W '97, Sp '97, Su '97. Includes stations like WRNS-AM-FM, WIKS, WSFL, etc.

Table for BATON ROUGE, LA. (81) with columns for Call, Format, Su '96, Fa '96, W '97, Sp '97, Su '97. Includes stations like WYWK-FM, WEMX, WYOK, etc.

Table for LITTLE ROCK, ARK. (82) with columns for Call, Format, Su '96, Fa '96, W '97, Sp '97, Su '97. Includes stations like KJSN, KPR, KMJX, etc.

Table for MOBILE, ALA. (84) with columns for Call, Format, Su '96, Fa '96, W '97, Sp '97, Su '97. Includes stations like WKSJ-AM-FM, WYOK, WBLX-FM, etc.

Table for BAKERSFIELD, CALIF. (86) with columns for Call, Format, Su '96, Fa '96, W '97, Sp '97, Su '97. Includes stations like KUZZ-AM-FM, KKKX-FM, KRAB, etc.

Table for SPOKANE, WASH. (87) with columns for Call, Format, Su '96, Fa '96, W '97, Sp '97, Su '97. Includes stations like KDRK, KRZX, KZUZ, etc.

Table for DES MOINES, IOWA (89) with columns for Call, Format, Su '96, Fa '96, W '97, Sp '97, Su '97. Includes stations like WHO, KSTZ, KJYJ, etc.

Table for WICHITA, KAN. (90) with columns for Call, Format, Su '96, Fa '96, W '97, Sp '97, Su '97. Includes stations like KZSN-FM, KFBI-FM, KRRD, etc.

Table for CHARLESTON, S.C. (91) with columns for Call, Format, Su '96, Fa '96, W '97, Sp '97, Su '97. Includes stations like WVVZ, WEZL, WAVF, etc.

Table for COLORADO SPRINGS (95) with columns for Call, Format, Su '96, Fa '96, W '97, Sp '97, Su '97. Includes stations like KKMG, KKFV, KKCS-AM-FM, etc.

Strongest Increase In Airplay This Week

MAINSTREAM

**INCREASE
IN PLAYS**

CHUMBAWAMBA • Tubthumping (REPUBLIC/UNIVERSAL)	+758
<small>KHTT +33, WKSE +30, KQKQ +27, KESR +24, WDJX +24, WQZQ +22, WLAN +22, WWZZ +21, WHYI +21, WPST +20</small>	
BACKSTREET BOYS • As Long As You Love Me (JIVE)	+560
<small>WXYV +21, KKMKG +20, WNTQ +20, WFLY +19, KHTT +19, KQKQ +18, KKRZ +18, KSMB +17, WXKB +17, WLSS +16</small>	
USHER • You Make Me Wanna... (LAFACE/ARISTA)	+420
<small>WKSZ +44, WNTQ +17, WPRO +17, WZJM +16, WYCR +15, WWCK +14, KSMB +13, WHYI +13, WFBC +13, WLSS +13</small>	
LISA LOEB • I Do (Geffen)	+409
<small>WKSZ +20, WLXK +20, KBKS +18, WJBQ +17, WLSS +15, WSTW +14, WNOK +14, WFLZ +14, WAEB +13, WFBC +13</small>	
SMASH MOUTH • Walkin' On The Sun (INTERSCOPE)	+403
<small>WFLY +21, WAPE +21, WWHT +20, WPRO +18, WZJM +16, WLXK +15, WSSX +15, WDJX +15, WXXX +13, WLAN +13</small>	
MARIAH CAREY • Butterfly (COLUMBIA)	+343
<small>WWHT +22, WRVQ +19, WZPL +19, WAPE +17, WLAN +15, WYCR +15, KIIS +15, WCIL +14, WIXX +13, KKLO +13</small>	
SAVAGE GARDEN • Truly Madly Deeply (COLUMBIA)	+323
<small>WYOY +21, WKRQ +17, WPRO +16, KHOM +15, KZHT +15, KBKS +14, WIXX +14, WSSX +14, KHTO +13, WWSR +12</small>	
SHE MOVES • Breaking All The Rules (Geffen)	+266
<small>KBFM +22, WZNY +16, WWHT +14, KKRZ +13, WKSZ +12, KRUF +12, WKSS +12, WWZZ +11, WPST +11, WABB +11</small>	
ALLURE FEATURING 112 • All Cried Out (TRACK MASTERS/CRAVE)	+258
<small>WPRO +24, WZJM +17, WWCK +16, WKSS +15, KQZQ +14, KHTT +13, WXXL +13, WXIS +11, KQKQ +11, KJYO +11</small>	
JANET • Together Again (VIRGIN)	+255
<small>KZUU +33, WDJX +27, KHOM +25, KRUF +19, WSNX +17, WFLY +17, KHTT +17, WVKX +12, WIXX +12, WRVQ +11</small>	

RHYTHMIC TOP 40

**INCREASE
IN PLAYS**

SOMETHIN' FOR THE PEOPLE FEAT. TRINA & TAMARA • My Love Is The Shhh! (WARNER BROS.)	+127
<small>WWKX +27, WBBM +24, KQMQ +22, WDRQ +20, KBOS +12, KKSS +11, KQKS +11, WPOW +11, KLUC +10, KSFM +10</small>	
JANET • Together Again (VIRGIN)	+101
<small>KUBE +32, KIOX +28, KQMQ +18, KKSS +16, KGGI +14, WFHN +11, WNVZ +11, WHHH +10, KOHT +7, WBBM +6</small>	
BACKSTREET BOYS • As Long As You Love Me (JIVE)	+94
<small>KTFM +21, KIKI +16, KLUC +15, WBBM +15, WFHN +11, WPOW +10, KZFM +5, WKXJ +4, WIOQ +4, KBOS +3</small>	
ALLURE FEATURING 112 • All Cried Out (TRACK MASTERS/CRAVE)	+89
<small>KTFM +25, WWKX +19, KIOX +15, WNVZ +13, KDGS +11, KGGI +9, WPOW +9, WKTU +7, KYLZ +6, XHTZ +6</small>	
LL COOL J • Phenomenon (DEF JAM/MERCURY)	+84
<small>KYLZ +26, WWKX +22, WBBM +11, KYLD +10, KDGS +8, WKXJ +8, KCAQ +6, KOHT +5, KIKI +3, KZFM +3</small>	
LSG • My Body (EASTWEST/EEG)	+83
<small>KYLZ +34, WKXJ +32, KLUC +29, WWKX +16, WJJS +4, KDGS +3, KZFM +3, KPRR +3, KKFR +3, WPOW +2</small>	
SPICE GIRLS • Spice Up Your Life (VIRGIN)	+65
<small>WBBM +21, WPOW +13, WFHN +9, KPRR +7, KKSS +7, KIBB +5, KTFM +5, KOHT +3, WJJS +2, WKXJ +2</small>	
BILLY LAWRENCE • Up & Down (EASTWEST/EEG)	+60
<small>WWKX +16, KKSS +14, KZFM +9, WHHH +6, KOHT +5, KYLD +5, WJJS +4, KPRR +4, KDGS +2</small>	
TONY TONI TONE • Boys And Girls (LAFACE/ARISTA)	+55
<small>WHHH +17, KDGS +15, XHTZ +8, KGGI +7, KCAQ +3, WFHN +3, KYLZ +1, KSFM +1</small>	
MISSY "MISDEMEANOR" ELLIOTT FEAT. DA BRAT • Sock It 2 Me (EASTWEST/EEG)	+53
<small>WKXJ +15, KYLZ +14, WHHH +13, WFHN +6, KIKI +4, WJJS +4, KZFM +3, KKFR +3, KQMQ +1, KDGS +1</small>	

CROSSOVER

**INCREASE
IN PLAYS**

ERYKAH BADU • Tyrone (KEDAR/UNIVERSAL)	+323
<small>WQUE +45, KMEL +26, WQOK +25, WBTT +24, WWWZ +23, WBHJ +21, WJLB +21, WWKX +15, WJMH +14, WPEG +13</small>	
LSG • My Body (EASTWEST/EEG)	+171
<small>KYLZ +34, WKXJ +32, KLUC +29, WWKX +16, KRRQ +12, WBTT +10, WCKX +9, WIZF +9, WJLB +8, WGZB +7</small>	
DRU HILL • We're Not Making Love No More (LAFACE/ARISTA)	+169
<small>WERQ +17, KBXX +17, WHHH +16, KYLZ +13, WIZF +13, WJHM +13, WUSL +13, WFXA +12, WCKX +10, WKKV +10</small>	
MISSY "MISDEMEANOR" ELLIOTT FEAT. DA BRAT • Sock It 2 Me (EASTWEST/EEG)	+166
<small>WJMI +19, WKXJ +15, KYLZ +14, WBHJ +13, WKKV +13, WHHH +13, WGZB +13, KMEL +13, KRRQ +12, KKDA +9</small>	
JON B. • Are U Still Down (YAB YUM/550 MUSIC/EPIC)	+147
<small>KKDA +27, WGZB +18, WCKX +15, KKFR +13, WHTA +12, WQUE +12, WJMI +9, WJJS +8, KBXX +8, KRRQ +7</small>	

MODERN ADULT

**INCREASE
IN PLAYS**

LISA LOEB • I Do (Geffen)	+223
<small>WPLL +24, WBAM +23, WVRV +22, WVIC +22, WTMX +19, KYSR +19, KPEK +17, KZZO +14, KZON +11, WMBX +11</small>	
MATCHBOX 20 • 3 AM (LAVA/ATLANTIC)	+173
<small>KMXB +32, KZZP +30, KPEK +20, KAMX +17, WKZL +17, KYYS +16, KTNP +11, KYSR +9, WWCD +7, WVIC +7</small>	
CHUMBAWAMBA • Tubthumping (REPUBLIC/UNIVERSAL)	+157
<small>KZZO +19, WBAM +16, WKZL +16, KFMB +13, KAMX +12, KYSR +12, WLNK +12, KZZP +11, WVIC +10, WPLL +10</small>	
SARAH MCLACHLAN • Sweet Surrender (NETTWERK/ARISTA)	+132
<small>KAMX +23, KMXB +18, WXLE +15, KTNP +13, WWCD +13, WHPT +11, WKZL +11, WPLT +11, KLLC +7, KZON +5</small>	
THIRD EYE BLIND • How's It Going To Be (ELEKTRA/EEG)	+110
<small>WJBJ +17, KZZO +17, KBBT +17, KZON +16, WLIR +9, WPLL +9, WMTX +6, WBMX +5, WDCG +4, WPTE +3</small>	

ADULT TOP 40

**INCREASE
IN PLAYS**

CHUMBAWAMBA • Tubthumping (REPUBLIC/UNIVERSAL)	+265
<small>KZZO +19, WBAM +16, KVVU +16, WKZL +16, KISN +16, WAKS +13, KFMB +13, KAMX +12, KYSR +12, WLNK +12</small>	
LISA LOEB • I Do (Geffen)	+205
<small>WPLL +24, WBAM +23, WVIC +22, WTMX +19, WAEV +19, KYSR +19, KPEK +17, KZZO +14, WEZB +11, WMBX +11</small>	
MATCHBOX 20 • 3 AM (LAVA/ATLANTIC)	+170
<small>KMXB +32, KZZP +30, KPEK +20, KAMX +17, WKZL +17, KYYS +16, KTNP +11, KYSR +9, KHMV +7, WVIC +7</small>	
LEANN RIMES • How Do I Live (CURB)	+108
<small>WNSR +32, KHMV +23, WMYX +16, WAEV +15, WLNK +8, WRAL +6, KBEE +6, KDMX +6, KKOB +5, WAKS +5</small>	
THE SUNDAYS • Summertime (DGC/GEFFEN)	+102
<small>KYYS +28, KVVU +14, WMBX +14, WBMX +14, WSHE +13, KYSR +10, KZZO +9, KFMB +9, KMXB +8, KHMV +8</small>	

ADULT CONTEMPORARY

**INCREASE
IN PLAYS**

MICHAEL BOLTON • The Best Of Love (COLUMBIA)	+164
<small>WMJQ +25, WSLQ +15, KESZ +10, WMAG +10, KEZK +10, KMGA +9, WARM +7, WLIF +6, WLAC +6, WSHH +6</small>	
BARBRA STREISAND - CELINE DION • Tell Him (550 MUSIC/EPIC/COLUMBIA)	+164
<small>WMIY +27, WJDX +24, WINK +22, KIMN +14, KIOI +13, WLIF +11, WYJB +8, WTFM +7, KISC +6, WDOK +6</small>	
GARY BARLOW • So Help Me Girl (ARISTA)	+93
<small>KIOI +32, KEZK +10, WMGS +9, KESZ +9, WYJB +6, KTDY +6, WTCB +5, WLIT +5, WLHT +5, KLYF +5</small>	
TONI BRAXTON WITH KENNY G • How Could An Angel Break My Heart (LAFACE/ARISTA)	+80
<small>KTDY +11, KKCW +10, KESZ +9, WLIT +7, WRCH +6, WRRM +6, WLTS +5, WSHH +5, KISC +4, KOSI +3</small>	
DONNA LEWIS & RICHARD MARX • At The Beginning (ATLANTIC)	+77
<small>KLYF +14, KTHT +13, WRCH +8, WALK +7, WINK +6, WTFM +6, WDOK +6, WLTS +6, WLHT +4, KLSY +3</small>	



alana davis 32 flavors

the premiere single and video from her debut album **blame it on me**

Monitor Convention Madness!

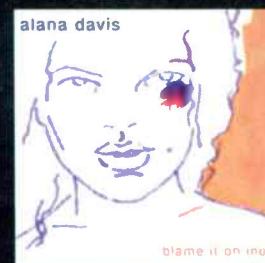
WXKS	Boston	New!
WBMX	Boston	New!
WDCG	Raleigh	12x
KLLC	San Francisco	New!
WMTX	Tampa	New!
WPST	Trenton	23x
WKSS	Hartford	New!
WSNX	Grand Rapids	17x
WPTE	Norfolk	25x
KMXB	Las Vegas	36x
WBAM	Montgomery	23x
WMXB	Richmond	17x
KFMB	San Diego	20x
WPLL	Miami	New!

On Tour with the 10,000 Maniacs

"the 21-year-old soul-folk singer's gently rocking **blame it on me** is one of this season's stellar debuts."
- time magazine

produced by ed lutan
co-produced by alana davis
management: jeffrey evan kwatinetz

on elektra 550/epic and warrner. zsa/zettas.
www.elektra.com © 1997 elektra entertainment
group, a division of warrner communications inc.
a time warner company.



POWER PLAYLISTS

For Week Ending October 26, 1997



Table for station WHTZ (New York) with columns for rank, song title, artist, and chart position. Includes songs like 'Smash Mouth, Walkin' On The Sun' and 'Rolling Stones, Anybody Seen My Baby'.

Table for station Z100 (New York) with columns for rank, song title, artist, and chart position. Includes songs like 'LeAnn Rimes, How Do I Live' and 'The Notorious B.I.G., Mo Money Mo Problems'.

Table for station KIIS (Los Angeles) with columns for rank, song title, artist, and chart position. Includes songs like 'Allure, All Cried Out' and 'Chumbawamba, Tubthumping'.

Table for station KIIS (Los Angeles) with columns for rank, song title, artist, and chart position. Includes songs like 'LeAnn Rimes, How Do I Live' and 'The Notorious B.I.G., Mo Money Mo Problems'.

Table for station KISS 108 (Boston) with columns for rank, song title, artist, and chart position. Includes songs like 'Chumbawamba, Tubthumping' and 'Sugar Ray, Fly'.

Table for station KRBE (Houston) with columns for rank, song title, artist, and chart position. Includes songs like 'Backstreet Boys, Quit Playing Games' and 'Robyn, Do You Know What It Takes'.

Table for station KISS 106.1 (Dallas) with columns for rank, song title, artist, and chart position. Includes songs like 'Sugar Ray, Fly' and 'Boyz II Men, 4 Seasons Of Loneliness'.

Table for station Z104 (Washington, DC) with columns for rank, song title, artist, and chart position. Includes songs like 'Allure, All Cried Out' and 'Third Eye Blind, Semi-Charmed Life'.

Table for station STAR 94 (Atlanta) with columns for rank, song title, artist, and chart position. Includes songs like 'Sugar Ray, Fly' and 'Sister Hazel, All For You'.

Table for station WFLZ (Tampa) with columns for rank, song title, artist, and chart position. Includes songs like 'Sugar Ray, Fly' and 'Chumbawamba, Tubthumping'.

Table for station KDWB (Minneapolis) with columns for rank, song title, artist, and chart position. Includes songs like 'Sugar Ray, Fly' and 'Jewel, Foolish Games'.

Table for station B94 (Pittsburgh) with columns for rank, song title, artist, and chart position. Includes songs like 'Sugar Ray, Fly' and 'Jewel, Foolish Games'.

Table for station Y100 (Miami) with columns for rank, song title, artist, and chart position. Includes songs like 'LeAnn Rimes, How Do I Live' and 'Boyz II Men, 4 Seasons Of Loneliness'.

Table for station KISS 95.7 (Hartford) with columns for rank, song title, artist, and chart position. Includes songs like 'Sugar Ray, Fly' and 'LeAnn Rimes, How Do I Live'.

Table for station WPST (Trenton) with columns for rank, song title, artist, and chart position. Includes songs like 'Sugar Ray, Fly' and 'LeAnn Rimes, How Do I Live'.

Table for station WNCI (Columbus) with columns for rank, song title, artist, and chart position. Includes songs like 'Third Eye Blind, Semi-Charmed Life' and 'Sugar Ray, Fly'.

Table for station Q102 (Cincinnati) with columns for rank, song title, artist, and chart position. Includes songs like 'Sugar Ray, Fly' and 'Jewel, Foolish Games'.

Table for station Z100 (Portland) with columns for rank, song title, artist, and chart position. Includes songs like 'Mariah Carey, Honey' and 'LeAnn Rimes, How Do I Live'.

POWER PLAYLISTS

For Week Ending October 26, 1997

AAA Broadcast Data Systems
Playlists supplied by Broadcast Data Systems Radio Track service...



MIX 93.3 KMXV Kansas City PD: Jon Zellner MD: Dylan. Top 40 list including Sugar Ray, Fly, Third Eye Blind, Semi-Charmed Life, Will Smith, Men In Black, etc.

JAMMIN' 92 WJVM Cleveland PD: Dave Eubanks MD: Action Jackson. Top 40 list including Allure, All Cried Out, God's Property, Stomp, etc.

XL106.7 WXXL Orlando OM/MD: Adam Cook APD/MD: Pete deGraaf. Top 40 list including Jewel, Foolish Games, Sugar Ray, Fly, etc.

ALICE 106 KALC Denver PD: Gregg Cassidy MD: Maria Chavez. Top 40 list including Fleetwood Mac, Silver Springs, Sugar Ray, Fly, etc.

PRO-FM WPRO Providence MD: Davey Morris. Top 40 list including Chumbawamba, Tubthumping, Sugar Ray, Fly, etc.

G105 WDCG Raleigh OM: Brian Burns PD: Kp Taylor. Top 40 list including Smash Mouth, Walkin On The Sun, Sugar Ray, Fly, etc.

KISS 95.1 WNKS Charlotte PD: Brian Bridgman MD: Danny Wright. Top 40 list including Jewel, Foolish Games, Sugar Ray, Fly, etc.

WZPL Indianapolis PD: Tom Gjerdrum MD: Dave Decker. Top 40 list including Matchbox 20, Push, Sugar Ray, Fly, etc.

MIX 104.1 KHOM New Orleans OM: Dave Stewart PD: Kandy Klutch MD: Tom Naylor. Top 40 list including Sugar Ray, Fly, Jewel, Foolish Games, etc.

KISS 106 KBKS Seattle PD: Mike Preston APD/MD: Chet Buchanan. Top 40 list including Matchbox 20, Push, Sugar Ray, Fly, etc.

WBLI Long Island PD: Ken Medek MD: Al Levine. Top 40 list including Diana King, I Say A Little Prayer, Sugar Ray, Fly, etc.

KJ103 KJYO Oklahoma City PD: Mike McCoy MD: Joe Friday. Top 40 list including Tonic, If You Could Only See, LaAnn Rimes, How Do I Live, etc.

THE RIVER WRWV Nashville PD: Charlie Quinn MD: Scooter. Top 40 list including Third Eye Blind, Semi-Charmed Life, Sugar Ray, Fly, etc.

WXYV Baltimore PD: Dave Ferguson APD: Throb MD: Albie Dee. Top 40 list including Chumbawamba, Tubthumping, LaAnn Rimes, How Do I Live, etc.

WIXX Green Bay PD: Dan Stone MD: David Burns. Top 40 list including Chumbawamba, Tubthumping, Matchbox 20, Push, etc.

KISS 98.5 WKSE Buffalo PD: Sue O'Neil APD/MD: Dave Universal. Top 40 list including Will Smith, Men In Black, The Notorious B.I.G., etc.

KHFI Austin PD: John Roberts APD/MD: Krash Kelly. Top 40 list including Puff Daddy & Faith Evans, I'll Be, LaAnn Rimes, How Do I Live, etc.

WKRZ Wilkes-Barre PD: Tony Banks APD/MD: Jerry Padden. Top 40 list including LaAnn Rimes, How Do I Live, Backstreet Boys, etc.

SEMI-CHARMED LIFE HIT #1 EVERYWHERE. THEN GRADUATE WENT TOP TEN. SO HOW'S IT GOING TO BE THIS TIME?



THIRDEYEBLIND



HOW'S IT GOING TO BE

The new single and video from their platinum self-titled debut album. Headlining clubs now.

ON TOUR with **U2** 10/26 - 11/23 and with **THE ROLLING STONES** 11/7 & 11/25 - 12/9.

Produced by Stephan Jenkins. Eric Valentine and Ren Klyce Management: Eric Godland for Eric Godland Management Inc.

#1 Most Added at Top 40!

WHTZ	New York City
WPRO	Providence
WZJM	Cleveland
WXKS	Boston
WKRZ	Wilkes-Barre
WSTW	Wilmington
WDCG	Raleigh
WPST	Trenton
KHTQ	Spokane
WFLY	Albany

and over 45 more!

#1 Most Added at Hot AC!

KLLC	San Francisco
WMTX	Tampa
KBBT	Portland
KZZO	Sacramento
KKMY	Beaumont
WPLL	Miami
WMXB	Richmond

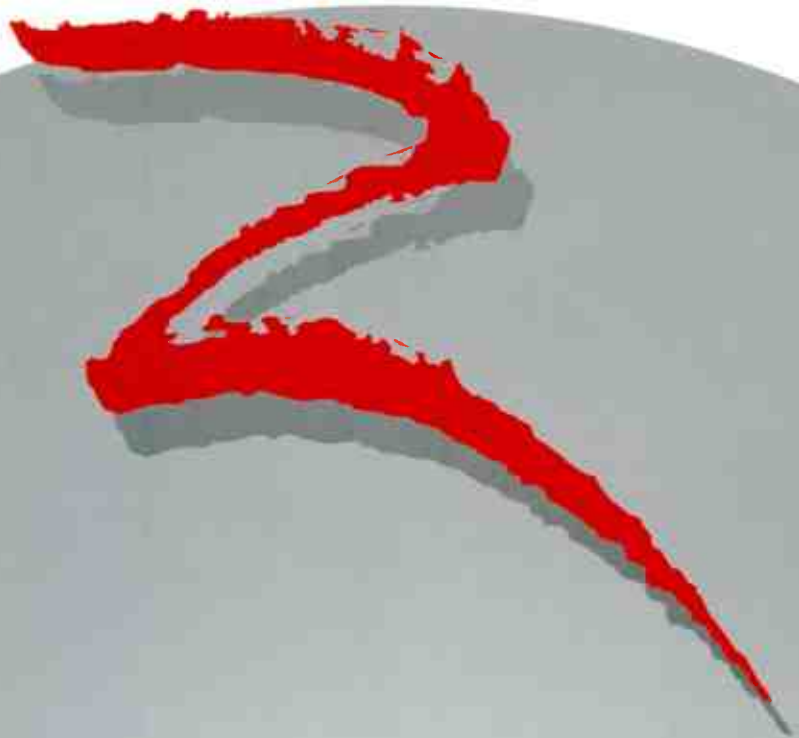
and a dozen more!

#1 Most Added at Modern Rock!

WHFS	Balt/DC
KROQ	Los Angeles
Live 105	San Francisco
Q101	Chicago
WPLT	Detroit
WPLY	Philadelphia
KNDD	Seattle
89X	Detroit
KWOD	Sacramento
KOME	San Jose

and another 45 more!





3 IN A ROW!

Consultant of the Year
Top 40 & A/C
1995 1996 1997

STRATEGIES FOR A NEW MILLENNIUM

John Clay *Steve Wyrstok* *Pat Paxton*
Steve Davis *Mark St. John* *Guy Zapoleon*

Z A P O L E O N
M E D I A S T R A T E G I E S

281.980.3665 www.zapoleon.com



AIRPOWER stars (Minimum 1500 detections for the first time)
Total Plays/Gain
FIONA APPLE 1551/116
Criminal (Clean Slate/WORK)
Total Stations: 87/Chart Move: 28-25

AIRPOWER BOUND
Total Plays/Gain
USHER 1480/420
You Make Me Wanna... (LaFace/Arista)
Total Stations: 79/Chart Move: 35-26

HANSON 1470/193
I Will Come To You (Mercury)
Total Stations: 88/Chart Move: 31-27

THE NOTORIOUS B.I.G. (FEAT. PUFF DADDY & MASE) 1420/128
Mo Money Mo Problems (Bad Boy/Arista)
Total Stations: 81/Chart Move: 30-28

AMY GRANT 1313/65
Takes A Little Time (A&M)
Total Stations: 79/Chart Move: 32-30

DURAN DURAN 1301/109
Electric Barbarella (Capitol)
Total Stations: 88/Chart Move: 33-31

SHE MOVES 1248/266
Breaking All The Rules (Geffen)
Total Stations: 77/Chart Move: 36-32

Medium (20-39): 27 KESR, KHFI, KHOM, KHTT, KKRZ, KQKQ, KRUF, KZQZ, WABB, WAEB, WBLL, WCIL, WDDJ, WFLZ, WKRZ, WKSZ, WLKT, WNKK, WPRO, WQSL, WQWZ, WRVQ, WWSR, WXXL, WXXX, WYCR, WZNY

BACKSTREET BOYS 1213/560
As Long As You Love Me (Jive)
Total Stations: 75/Chart Move: Debut 33

INOJ 1205/204
Love You Down (So So Def/Columbia)
Total Stations: 79/Chart Move: 34-34

LISA LOEB 978/409
I Do (Geffen)
Total Stations: 63/Chart Move: Debut 38

SAVAGE GARDEN 868/323
Truly Madly Deeply (Columbia)
Total Stations: 47/Chart Move: Debut 39

ELTON JOHN 808/94
Something About The Way You Look Tonight (Rock/A&M)
Total Stations: 78

MOST NEW STATIONS No. Of Stations
BACKSTREET BOYS 22
As Long As You Love Me (Jive)
LISA LOEB 22
I Do (Geffen)
SAVAGE GARDEN 15
Truly Madly Deeply (Columbia)
THIRD EYE BLIND 12
How's It Going To Be (Elektra/EEG)
USHER 11
You Make Me Wanna... (LaFace/Arista)

OASIS 784/68
Don't Go Away (Epic)
Total Stations: 57

SPICE GIRLS 660/119
Spice Up Your Life (Virgin)
Total Stations: 61

SHAWN COLVIN 641/74
You And The Mona Lisa (Columbia)
Total Stations: 77

THE WALLFLOWERS 626/80
Three Marlenas (Interscope)
Total Stations: 57

MEREDITH BROOKS 589/135
What Would Happen (Capitol)
Total Stations: 49

JANET 554/255
Together Again (Virgin)
Total Stations: 48

TEXAS 526/21
Say What You Want (Mercury)
Total Stations: 41

3RD PARTY 513/51
Love Is Alive (DVB/A&M)
Total Stations: 38

Medium (20-39): 10 KBFM, KHKS, KIIS, KRUF, WBLL, WNKK, WQZQ, WWSR, WXYV, WZJM

GARY BARLOW 440/72
So Help Me Girl (Arista)
Total Stations: 47

SALT-N-PEPA 431/31
R U Ready (Red Ant/Island)
Total Stations: 45

AALIYAH 394/59
The One I Gave My Heart To (Background/Arista)
Total Stations: 31

NU FLAVOR 346/49
Heaven (Reprise)
Total Stations: 38

SOMETHIN' FOR THE PEOPLE FEAT. TRINA & TAMARA 294/144
My Love Is The Shhh! (Warner Bros.)
Total Stations: 30

OLIVE 287/92
You're Not Alone (RCA)
Total Stations: 32

MARY J. BLIGE 265/27
Everything (MCA)
Total Stations: 30

DJ COMPANYY 233/52
Forever Young (Crave)
Total Stations: 25

BLESSID UNION 212/71
Light In Your Eyes (Capitol)
Total Stations: 36

NO MERCY 210/69
Kiss You All Over (Arista)
Total Stations: 15

THIRD EYE BLIND 205/164
How's It Going To Be (Elektra/EEG)
Total Stations: 34

MICHAEL BOLTON 191/133
The Best Of Love (Columbia)
Total Stations: 24

BARBRA STREISAND - CELINE DION 160/14
Tell Him (550 Music/Epic/Columbia)
Total Stations: 24

LL COOL J 158/48
Phenomenon (Def Jam/Mercury)
Total Stations: 29

TAJJA SEVELLE 153/8
I & I (550 Music)
Total Stations: 22

SAVE FERRIS 148/31
Come On Eileen (Starpool/Epic)
Total Stations: 12

DIANA KING 128/52
L-L-Lies (WORK)
Total Stations: 21

NO AUTHORITY 120/3
Don't Stop (MJJ/WORK)
Total Stations: 11

JAI 118/91
I Believe (RCA)
Total Stations: 16

Airpower awarded to those records which attain 1500 detections for the first time. New airplay lists those stations registering six or more detections per week on a record for the first time.

Table with multiple columns listing station names, call letters, and detection counts for various records.

Monitor AIRPLAY SONG ACTIVITY REPORTS



RHYTHMIC TOP 40

Monitor AIRPLAY POWER PLAYLISTS

For Week Ending October 26, 1997

Playlists supplied by Broadcast Data Systems' Radio Track service. Songs ranked by number of plays in monitored week. Playlists are listed in order of TSA weekly count, beginning with the highest counting station. Counts are updated twice yearly following the release of the Spring and Fall Arbitron surveys. The number of stations shown each week varies depending upon space.

WKTU PD: Frankie Blue APD/MD: Andy Shane. List of 40 songs with TW and LW columns.

B96 PD: Todd Cavanah MD: Erik Bradley. List of 40 songs with TW and LW columns.

B100 PD: Tony Coles MC: Leigh Ann Adam. List of 40 songs with TW and LW columns.

Q102 PD: Glenn Kalina MD: Jay Towers. List of 40 songs with TW and LW columns.

JAM'N 94.5 PD: Cadillac Jack APD/MD: Cat Collins. List of 40 songs with TW and LW columns.

WILD 94.9 PD: Michael Martin MD: "Jazzy" Jim Archer. List of 40 songs with TW and LW columns.

POWER 96 PD: Kid Curry MD: Phil Jones. List of 40 songs with TW and LW columns.

WDRQ PD: Lisa Rodman MD: Jimi Jamm. List of 40 songs with TW and LW columns.

KUBE PD: Mike Tierney MD: Bobby O. List of 40 songs with TW and LW columns.

KGGI PD: Diana Laird APD: Jesse Duran MC: Ricky Fuentes. List of 40 songs with TW and LW columns.

FM102 PD: Bob West APD/MD: Trejo. List of 40 songs with TW and LW columns.

KTFM PD: Cliff Tredway MD: Steve Chavez. List of 40 songs with TW and LW columns.

POWER 92 PD: Don Parker MD: Mikey Freeman. List of 40 songs with TW and LW columns.

Z90 OM/PD: Lisa Vazquez MD: Dale Soliven. List of 40 songs with TW and LW columns.

KS107.5 PD: Rick Stacy MD: Cagle. List of 40 songs with TW and LW columns.

B95 MD: Marcus D. List of 40 songs with TW and LW columns.

POWER 102 PD: John Candelaria. List of 40 songs with TW and LW columns.

Z104 PD: Don London APD/MD: Jay West. List of 40 songs with TW and LW columns.

T R I C K . . .



. . . O R

TOP 40 / MAINSTREAM

COMPETITION TWENTY-FOUR

FIRST PLACE

J.R.
AMMONS

STAR 94

ATLANTA, GA



"To say that this year has been full of incredible highs and lows for me would be an amazing understatement. This, thankfully, is one of the highs. First, let me say thanks to Alan Smith and all the friendly people at AIR for providing radio with an invaluable information source. The AIR Competition gives music junkies, like me, a forum for expressing our opinions on records regardless of station parameters... I think that's good for radio. Also, I'd like to thank Clarke Brown, Mark Kanov, Don Benson and Dan Bowen. I feel very fortunate to work in an industry I love, with a first class organization, and at the same time learn from guys for whom I have a tremendous amount of respect. Thanks again AIR. P.S. My wife looks good driving this car!"

GRAND PRIZE
BMW Z3 ROADSTER



ACTIVE INDUSTRY RESEARCH

World Radio History

SECOND PLACE \$10,000



ROB WAGMAN

WFBC / GREENVILLE, SC

"Evander had one good ear and won!! Apparently, so must I. Like Evander, I give thanks to my Lord and Savior, Jesus Christ! Andy Arnold: soon enough the world will know the many depths of your talent. Thank you AIR."



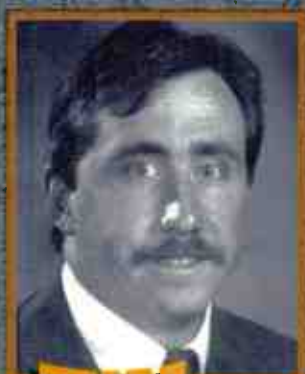
TRACY AUSTIN

KIIS/LOS ANGELES, CA
\$ 5,000



JOHN IVEY

WXKS/ BOSTON, MA
\$ 3,000



TIM MOORE

WJBQ/PORTLAND, ME
\$ 2,250



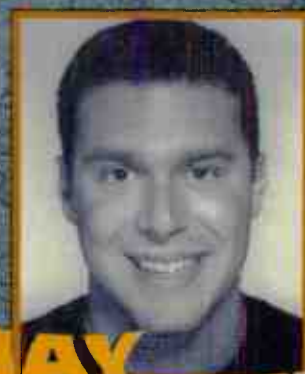
FERNANDO VENTURA

KZQZ/SAN FRANCISCO, CA
\$ 2,250



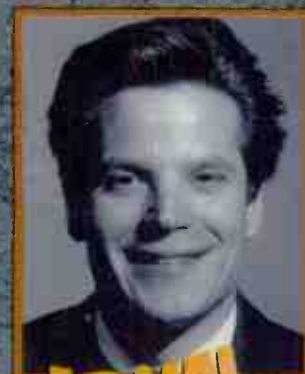
ROB MORRIS

KDWB/MINNEAPOLIS, MN
\$ 1,750



JAY MICHAELS

KRBE/HOUSTON, TX
\$ 1,500



JOHN PEAKE

KRBE/HOUSTON, TX
\$ 1,250



JOEY G.

FORMERLY AT
B97/NEW ORLEANS, LA
\$1,000

TOP 40/MAINSTREAM COMPETITION 25

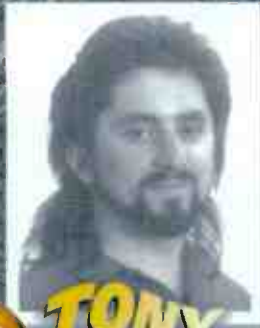
IS CURRENTLY UNDERWAY.
WINNERS WILL BE ANNOUNCED JUNE 1998.

World Radio History

GRAND PRIZE
Mercedes-Benz SLK



Congratulations to all Top 40/Mainstream Competition Winners



11 TONY MANN

WAPE/JACKSONVILLE, FL



12 DALE BAIRD

KQXY/BEAUMONT, TX



13 MIKE KASPER

KZMG/BOISE, ID



14 J.J. RICE

98PX/ROCHESTER, NY



15 DAVE UNIVERSAL

WKSE/BUFFALO, NY



16 TIM RICHARDS

KRQQ/TUCSON, AZ



17 KRASH KELLY

KHFI/AUSTIN, TX



18 DAVY CROCKETT

WYCR/YORK, PA



19 RICK MCCAUSLIN

WYCR/YORK, PA



20 DANA LUNDON

JET-FM/ERIE, PA



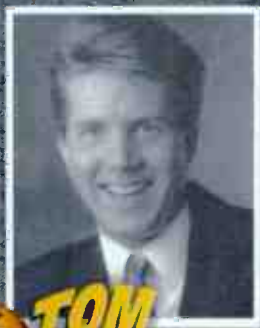
20 KEN BENSON

KKRZ/PORTLAND, OR



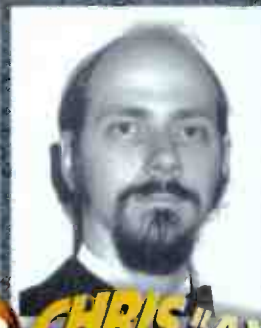
22 DAVE DECKER

WZPL/INDIANAPOLIS, IN



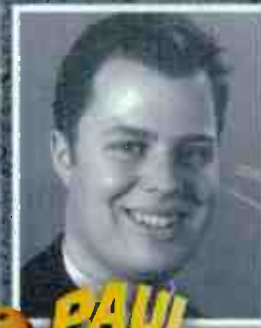
23 TOM GJERDRUM

WZPL/INDIANAPOLIS, IN



23 CHRIS "AXL" NEMETZ

Z100/NEW YORK, NY



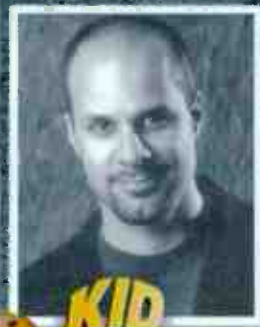
25 PAUL BRYANT

Z100/NEW YORK, NY



26 TOM POLEMAN

Z100/NEW YORK, NY



27 KID DAVID

WXKS/BOSTON, MA



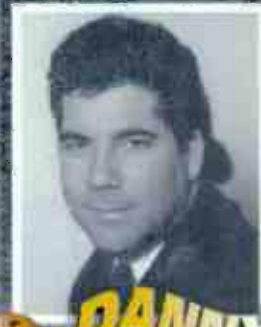
28 STACEY BRADY

B97/NEW ORLEANS, LA



29 JON ZELLNER

KMXV/KANSAS CITY, MO



30 DANNY OCEAN

KZQZ/SAN FRANCISCO, CA

WINNERS 11 THRU 30 SHARE A \$10,000 CASH POOL

SECOND HALF WINNERS



KRASH KELLY

KHFI
Austin, TX
\$2,500



ROB WAGMAN

WFBC
Greenville, SC
\$1,500



DAVE DECKER

WZPL
Indianapolis, IN
\$1,000

POWER PLAYLISTS™
AIRPLAY Monitor For Week Ending October 26, 1997

KLUC Las Vegas PD: Cat Thomas MD: Melissa Stefas
1 Usher, You Make Me Wanna 71 72
2 Sugar Ray, Fly 66 68
3 Puff Daddy & Faith Evans, I'll Be L.S.G., My Body 60 41

I94 Honolulu PD: Alan Oda MD: Richie Aqiu
1 Somethin' For The People, My Love Is The Milestone, I Care 'bout You 60 56
2 Usher, You Make Me Wanna 60 55
3 Boyz II Men, 4 Seasons Of Loneliness 59 56

HOOSIER 96.3 Indianapolis PD: Scott Wheeler MD: Carl Frye
1 Usher, You Make Me Wanna 62 61
2 Somethin' For The People, My Love Is The Milestone, I Care 'bout You 52 52
3 Allura, All Cried Out 51 46

KIX 106 Providence PD: Joe Dawson MD: Sandy B.
1 Usher, You Make Me Wanna 97 95
2 Aaliyah, The One I Gave My Heart To 88 89
3 En Vogue, Too Good, Too Long 87 87

KQMQ Honolulu PD: Kim Akane MC: Eric "Kool E." Bunda
1 Damage, Wonderful Tonight 63 58
2 Nu Flavor, Heaven 61 55
3 Milestone, I Care 'bout You 61 59

KKSS Albuquerque PD: Tony Manero APD: Mikey Fuentes MD: Jackie James
1 Usher, You Make Me Wanna 72 53
2 Somethin' For The People, My Love Is The Milestone, I Care 'bout You 61 50

KKXX Bakersfield PD: Chris Squires MD: Tony Manes
1 The Notorious B.I.G., No Money No Problems 83 80
2 Mariah Carey, Honey 81 85
3 Puff Daddy & Faith Evans, I'll Be L.S.G., My Body 78 81

Z95 Corpus Christi PD: Ed Ocanas MD: Tony Manero
1 LaAnn Rimes, How Do I Live 66 66
2 Usher, You Make Me Wanna 66 67
3 Somethin' For The People, My Love Is The Milestone, I Care 'bout You 62 57

KDON Monterey PD: Scooter Stevens MD: Picasso
1 Nu Flavor, Heaven 61 59
2 Inoj, Love You Down 61 63
3 Sugar Ray, Fly 61 64



"Whatever U Want" (catering Dwayne Wiggins of Tony! Toni! Toné!)
ADDs: KKFR 56x, XHTZ 35x, KKSS 11x, KSFM 12x, KYLZ 13x, KSJM 30x, KHTN 20x
MORE ACTION: KPRR, KCAQ, KQKS, WWKX
THUMP RECORDS, INC. P.O. Box 445 Walnut, CA 91788

TOP 40 AIRPLAY MONITOR OCTOBER 31, 1997

SPICE GIRLS 367/65 Spice Up Your Life (Virgin)
Total Stations: 22 Chart Move: 38-31
New York: BET 11 9 - 22, KTFM 19 25 21 17, WKTU 5 5 7 21, WJZZ 1 1 - 1

SUGAR RAY 735/22 Fly (Lava/Atlantic)
Total Stations: 25 Chart Move: 13-12
New York: BET 2 4 5 394, WKTU 10 - - 10, WJZZ 1 1 - 1

SWV FEAT. REDMAN 190/31 Lose My Cool (RCA)
Total Stations: 15 Chart Move: 2-1
New York: BET 10 - - - 10, WKTU 16 11 9 36, WJZZ 1 1 - 1

TOTAL 334/42 What About Us (LaFace/Arista)
Total Stations: 15 Chart Move: Debut 35
New York: BET 9 12 12 67, WKTU 2 1 2 8, WJZZ 1 1 - 1

USHER 1935/22 You Make Me Wanna... (LaFace/Arista)
Total Stations: 33 Chart Move: 1-1
New York: BET 16 16 14 172, WKTU 20 19 11 75, WJZZ 1 1 - 1

AIRPLAY
Monitor

BDS IMPACT™ **DETECTIONS**



*** **AIRPOWER** ***
(Minimum 500 detections for the first time)

MOST NEW STATIONS

No. Of Stations

Medium (20-39): 1 KDGS
Light (Under 20): 6
New Airplay This Week: 1 KBOS

H.TOWN

75/4

AIRPLAY
Monitor

CROSSOVER AIRPLAY



DETECTIONS

BDS IMPACT

*** **AIRPOWER** ***
(Minimum 700 detections for the first time)

Total Plays/Gain

DRU HILL 786/169

We're Not Making Love No More (LaFace/Arista)

Total Stations: 36/Chart Move: 29-20

Heavy (30+ plays): 10 KKDA, KYZL, WBHJ, WJHM, WJMH, WKYS, WPGC, WQUE, WUSL, WYOK

Medium (15-29): 16 KBXX, WCKX, WERQ, WFXA, WGCI, WGZB, WHHH, WIZF, WJBT, WJLB, WJMI, WKKV, WPEG, WPHI, WQHT, WQOK

Light (Under 15): 10
New Airplay This Week: 3 KRRQ, WERQ, WHHH

MOST NEW STATIONS

No. Of Stations

ERYKAH BADU 14

Tyrone (Kedar/Universal)

JAY-Z FEAT. BABYFACE AND FOXY BROWN 9

Sunshine (Roc-A-Fella/Def Jam/Mercury)

DRU HILL 8

5 Steps (Island)

IMMATURE 8

Give Up The Ghost (MCA)

JON B. 6

Are U Still Down (Yab Yum/550 Music/Epic)

AIRPOWER BOUND

Total Plays/Gain

MASTER P FEAT. PIMP C AND THE SHOCKER 693/84
I Miss My Homies (No Limit/Priority)

Total Stations: 34/Chart Move: 30-21

Heavy (30+ plays): 8 KBXX, KKDA, KUBE, KYZL, WBHJ, WFXA, WJBT, WJMI

Medium (15-29): 11 KDGS, KRRQ, WHHH, WJMH, WKKV, WKXJ, WPEG, WPOW, WROU, WWWZ, WYOK

Light (Under 15): 15
New Airplay This Week: 3 WCKX, WIZF, WJMH

PUFF DADDY & THE FAMILY (FEAT. THE NOTORIOUS B.I.G. & MASE) 690/-4
Been Around The World (Bad Boy/Arista)

Total Stations: 48/Chart Move: 24-23

Heavy (30+): 8 KIKI, KPWR, KQKS, WJMI, WPHI, WQHT, WUSL, XHTZ

Medium (15-29): 12 KDGS, KRRQ, KYZL, WCKX, WFXA, WHHH, WHTA, WJBT, WPEG, WQUE, WROU, WYOK

Light (Under 15): 28
New Airplay This Week: 3 WGCI, WGZB, WKKV

MACK 10 654/19
Backyard Boogie (Priority)

Total Stations: 31/Chart Move: 28-26

Heavy (30+): 8 KKBT, KFR, KPWR, KYLD, KYZL, WJMI, WKXJ, XHTZ

Medium (15-29): 7 KCAQ, KDGS, WBTT, WCKX, WHHH, WROU, WWWZ

Light (Under 15): 16

MILESTONE 626/38
I Care 'Bout You (LaFace/Arista)

Total Stations: 27/Chart Move: 32-28

Heavy (30+): 9 KIKI, KMEL, KQMQ, KRRQ, WFXA, WGCI, WKXJ, WQUE, WWWZ

Medium (15-29): 9 WQZB, WIZF, WJMI, WJMZ, WKKV, WPEG, WQOK, WROU, WWWZ

Light (Under 15): 9

MARIAH CAREY 595/6
Butterfly (Columbia)

Total Stations: 36/Chart Move: 31-30

Heavy (30+): 7 KDON, KLUC, KQMQ, KUBE, WJHM, WWWZ, XHTZ

Medium (15-29): 11 KBOS, KDGS, KIKI, KQKS, WCKX, WERQ, WFXA, WGCI, WHHH, WJJS, WQUE

Light (Under 15): 18
New Airplay This Week: 2 WJMI, WWWZ

NU FLAVOR 544/-22
Heaven (Reprise/Warner Bros.)

Total Stations: 16/Chart Move: 33-32

Heavy (30+): 9 KBOS, KDON, KIKI, KLUC, KQKS, KQMQ, KYZL, WHHH, WPOW

Medium (15-29): 3 KDGS, KYLD, WJJS

Light (Under 15): 4

JON B. 541/147
Are U Still Down (Yab Yum/550 Music/Epic)

Total Stations: 26/Chart Move: Debut 33

Heavy (30+): 7 KBXX, KKDA, KUBE, KYZL, WBHJ, WHTA, WQUE

Medium (15-29): 7 KBOS, KCAQ, KDGS, WCKX, WGZB, WJJS, WJMI

Light (Under 15): 12
New Airplay This Week: 6 KFR, KMEL, KRRQ, WCKX, WGZB, WPOW

SWV (FEAT. REDMAN) 502/66
Love My Cool (RCA)

Total Stations: 40/Chart Move: Debut 36

Heavy (30+): 2 WPHI, WUSL

Medium (15-29): 14 KDGS, KKFR, WFXA, WGCI, WHHH, WHTA, WJJS, WJLB, WKKV, WPEG, WQOK, WQUE, WROU, WWWZ

CHART BOUND

Total Plays/Gain

BOBBY BROWN 439/7

Feelin' Inside (MCA)

Total Stations: 34

Heavy (30+): 2 KDON, WJMZ

Medium (15-29): 15 KBOS, KBXX, KDGS, KRRQ, WFXA, WIZF, WJJS, WKKV, WPEG, WQOK, WQUE, WROU, WWWZ, WYOK, XHTZ

Light (Under 15): 17
New Airplay This Week: 2 WIZF, WKKV

MARIAH CAREY 428/20
Breakdown (Columbia)

Total Stations: 19

Heavy (30+): 5 KBXX, KKFR, KUBE, WBHJ, WPHI

Medium (15-29): 7 KBOS, KKBT, KYZL, WCKX, WKYS, WPGC, WUSL

Light (Under 15): 7
New Airplay This Week: 3 KDGS, KLUC, WCKX

ERYKAH BADU 423/323
Tyrone (Kedar/Universal)

Total Stations: 27

Heavy (30+): 3 KMEL, WBHJ, WQUE

Medium (15-29): 9 KRRQ, WHHH, WJLB, WJMH, WPEG, WQOK, WWWZ, WWWZ

Light (Under 15): 15
New Airplay This Week: 14 KDGS, KRRQ, WBTT, WHTA, WJLB, WJMH, WJMZ, WKYS, WQOK, WQUE, WROU, WUSL, WWWZ, WWWZ

THE NOTORIOUS B.I.G. (FEAT. R. KELLY) 413/-19
Lovin' You Tonight (Bad Boy/Arista)

Total Stations: 24

Heavy (30+): 5 KKBT, KPWR, WERQ, WJMH, WKYS

Medium (15-29): 4 WCKX, WJLB, WPEG, WPGC

Light (Under 15): 15

K-CI & JOJO 407/50
Last Night's Letter (MCA)

Total Stations: 23

Heavy (30+): 3 WPEG, WQUE, WYOK

Medium (15-29): 13 KDGS, KRRQ, WFXA, WGCI, WGZB, WIZF, WJHM, WJLB, WJMI, WKYS, WQOK, WROU, WWWZ

Light (Under 15): 7

H-TOWN 372/54
They Like It Slow (Relativity)

Total Stations: 27

Heavy (30+): 2 KBXX, KKDA

Medium (15-29): 9 KRRQ, WHHH, WIZF, WJLB, WJMI, WJMZ, WPEG, WWWZ, XHTZ

Light (Under 15): 16
New Airplay This Week: 2 WQOK, WUSL

JAY-Z FEAT. BABYFACE AND FOXY BROWN 365/74
Sunshine (Roc-A-Fella/Def Jam/Mercury)

Total Stations: 41

Heavy (30+): 0

Medium (15-29): 9 KCAQ, KKFR, KMEL, KPWR, KYZL, WHTA, WJHM, WPHI, XHTZ

Light (Under 15): 32
New Airplay This Week: 9 KCAQ, KUBE, WBHJ, WCKX, WERQ, WHHH, WJMN, WKKV, XHTZ

IMMATURE 346/92
Give Up The Ghost (MCA)

Total Stations: 28

Heavy (30+): 2 KBXX, WQUE

Medium (15-29): 7 KBOS, KKDA, KPWR, WBHJ, WBTT, WJMI, WYOK

Light (Under 15): 19
New Airplay This Week: 8 KCAQ, KPWR, KRRQ, KYZL, WHHH, WJBT, WJLB, WKKV

LIL' KIM (FEAT. ANDREA MARTIN) 345/29
Money Talks (Arista)

Total Stations: 19

Heavy (30+): 5 KBXX, WHTA, WJMH, WPHI, WUSL

Medium (15-29): 4 WBHJ, WKYS, WPEG, WPGC

Light (Under 15): 10
New Airplay This Week: 1 WBHJ

MARY J. BLIGE 343/60
A Dream (Arista)

Total Stations: 11

Heavy (30+): 7 WBHJ, WJLB, WJMH, WKYS, WPEG, WPGC, WUSL

Medium (15-29): 2 WPHI, WQOK

Light (Under 15): 2
New Airplay This Week: 1 WPHI

DRU HILL 327/135
5 Steps (Island)

Total Stations: 29

Heavy (30+): 1 WERQ

Medium (15-29): 7 KKDA, WBHJ, WGCI, WJBT, WJMI, WQHT, WQOK

Light (Under 15): 21
New Airplay This Week: 8 KKDA, WBHJ, WBTT, WJHM, WKXJ, WQHT, WQUE, WYOK

JANET 289/45
Together Again (Virgin)

Total Stations: 17

Heavy (30+): 3 KDON, KQKS, KUBE

Medium (15-29): 7 KBOS, KDGS, KQMQ, WHHH, WJJS, WJMN, WKKV

Light (Under 15): 7
New Airplay This Week: 2 KQMQ, WCKX

THE NOTORIOUS B.I.G. (FEAT. 112) 287/3
Sky's The Limit (Bad Boy/Arista)

Total Stations: 26

Heavy (30+): 1 WHTA

Medium (15-29): 6 KDGS, WERQ, WJBT, WJMI, WKYS, WPGC, WQHT, WKKV

Light (Under 15): 17
New Airplay This Week: 3 WERQ, WKKV, WROU

PUFF DADDY & THE FAMILY 276/12
Senorita (Bad Boy/Arista)

Total Stations: 17

Heavy (30+): 4 KKFR, KPWR, KYLD, WBTT

Medium (15-29): 4 KDON, KYZL, WJHM, WPOW

Light (Under 15): 9
New Airplay This Week: 2 WCKX, WQHT

★ TONY TONI TONE 239/95
Boys And Girls (LaFace/Arista/Mercury)

Total Stations: 21

Heavy (30+): 1 WQUE

Medium (15-29): 6 KDGS, WHHH, WJMZ, WKKV, WROU, WWWZ

Light (Under 15): 14
New Airplay This Week: 4 KRRQ, WIZF, WPGC, XHTZ

ROBYN 226/2
Show Me Love (RCA)

Total Stations: 11

Heavy (30+): 5 KDGS, KDON, KQMQ, WHHH, WJJS

Medium (15-29): 1 WKKV

Light (Under 15): 5

THIS WEEK	LAST WEEK	WEEKS ON	TITLE/LABEL/PROMOTION LABEL	ARTIST	TW	LW
			*** No. 1 ***			
1	1	14	YOU MAKE ME WANNA... LAFACE/ARISTA 8 weeks at No. 1	USHER	2690	2728
(2)	2	10	MY LOVE IS THE SHIH! WARNER BROS. SOMETHIN' FOR THE PEOPLE FEAT. TRINA & TAMARA		2419	2378
(3)	3	10	PUT YOUR HANDS WHERE MY EYES COULD SEE ELEKTRA/EEG BUSTA RHYMES		1890	1768
4	4	10	4 SEASONS OF LONELINESS MOTOWN BOYZ II MEN		1634	1749
5	5	16	EVERYTHING MCA MARY J. BLIGE		1540	1647
(6)	6	12	WHAT ABOUT US LAFACE/ARISTA TOTAL		1512	1491
(7)	7	10	ALL CRIED OUT TRACK MASTERS/CRAVE ALLURE FEAT. 112		1493	1399
(8)	9	6	PHENOMENON DEF JAM/MERCURY LL COOL J		1324	1239
(9)	13	5	SOCK IT 2 ME EASTWEST/EEG MISSY "MISDEMEANOR" ELLIOTT FEAT. DA BRAT		1208	1042
10	8	9	GOT 'TIL IT'S GONE VIRGIN JANET (FEAT. Q-TIP AND JONI MITCHELL)		1157	1324
(11)	11	9	FEEL SO GOOD BAD BOY/ARISTA MASE		1125	1107
(12)	16	5	BUTTA LOVE ARISTA NEXT		1063	949
13	10	25	NO MONEY NO PROBLEMS BAD BOY/ARISTA THE NOTORIOUS B.I.G. (FEAT. PUFF DADDY & MASE)		1037	1116
(14)	15	9	YOU SHOULD BE MINE (DON'T WASTE YOUR TIME) MERCURY BRIAN MCKNIGHT FEAT. MASE		999	997
(15)	17	7	THE ONE I GAVE MY HEART TO BLACKGROUND/ATLANTIC AALIYAH		996	934
16	12	13	HONEY COLUMBIA MARIAH CAREY		957	1089
17	14	16	NEVER MAKE A PROMISE ISLAND DRU HILL		945	1039
(18)	23	4	MY BODY EASTWEST/EEG LSG		895	724
(19)	18	5	R U READY RED ANT/LONDON/ISLAND SALT-N-PEPA		836	794
			*** AIRPOWER ***			
(20)	29	2	WE'RE NOT MAKING LOVE NO MORE LAFACE/ARISTA DRU HILL		786	617
(21)	30	6	I MISS MY HOMIES NO LIMIT/PRIORITY MASTER P FEAT. PIMP C AND THE SHOCKER		693	609
22	22	5	IF I COULD TEACH THE WORLD RUTHLESS/RELATIVITY BONE THUGS-N-HARMONY		693	745
23	24	3	BEEN AROUND THE WORLD BAD BOY/ARISTA PUFF DADDY & THE FAMILY (FEAT. THE NOTORIOUS B.I.G. & MASE)		690	694
24	19	15	THE LOVE SCENE JIVE JOE		670	773
25	21	16	BIG BAD MAMMA VIOLATOR/DEF JAM/MERCURY FOXY BROWN FEAT. DRU HILL		659	747
(26)	28	4	BACKYARD BOOGIE PRIORITY MACK 10		654	635
27	20	18	NOT TONIGHT UNDERSTAMP/BOYATLANTIC LIL' KIM FEAT. DA BRAT, LEFT EYE, MISSY ELLIOTT & ANGIE MARTINEZ		645	771
(28)	32	4	I CARE 'BOUT YOU LAFACE/ARISTA MILESTONE		626	588
29	25	16	IT'S ALL ABOUT THE BENJAMINS BAD BOY/ARISTA PUFF DADDY & THE FAMILY (FEAT. THE NOTORIOUS B.I.G., LIL' KIM & THE LOQ)		625	657
(30)	31	2	BUTTERFLY COLUMBIA MARIAH CAREY		595	589
31	27	21	MEN IN BLACK COLUMBIA WILL SMITH		577	635
32	33	9	HEAVEN REPRISE/WARNER BROS. NU FLAVOR		544	566
(33)						

2PAC

“I
Wonder
If
Heaven
Got A
Ghetto”

FROM THE DOUBLE ALBUM OF ALL NEW MUSIC

R U still down? [remember me]

IMPACTING RHYTHM CROSSOVER RADIO NOVEMBER 3RD

EXECUTIVE PRODUCER: AFENI SHAKUR

ALBUM IN STORES
NOVEMBER 25

AMARU
RECORDS





POWER PLAYLISTS

For Week Ending October 26, 1997

Playlists supplied by Broadcast Data Systems Radio Track service. Songs ranked by number of plays in monitored week. Playlists are listed in order of TBA weekly count, beginning with the highest-counting station. Counts are updated twice weekly following the release of the Spring and Fall Arbitron surveys. The number of stations shown each week varies depending upon space.

Grid of 48 radio station playlists including WPLJ, STAR 104.5, Q95.5, MIX 107.3, MIX 96.5, KS95, MIX 106.5, Q104, STAR 101.5, KYKY, MIX 105.1, 94WKTI, MIX 101.5, KISN 97, MIX 99.1, VARIETY 96, STAR 95.7, WENS, KISS FM, MAGIC 105, FM100, WSNE, B98.7. Each station listing includes song titles and their corresponding rank for that week.

BDS IMPACT

AIRPOWER

(Minimum 700 detections for the first time)

Total Plays/Gain

ELTON JOHN 717/84

Something About The Way You Look Tonight (Rocket/A&M)

Total Stations: 37/Chart Move: 25-24

Heavy (30+ plays): 7 KHM, KISN, KSSK, KYKY, WAEV, WKTI, WQAL

Medium (15-29): 16 KSII, KSMG, KSTZ, KURB, WENS, WEZB, WKDD, WMC, WMXL, WMYX, WNSR, WPLJ, WSNE, WVA, WVAF, WWDE, WYXR

Light (Under 15): 14

New Airplay This Week: 1 WNSR

AIRPOWER BOUND

Total Plays/Gain

IMANI COPPOLA 640/37

Legend Of A Cowgirl (Columbia)

Total Stations: 35/Chart Move: 26-26

Heavy (30+ plays): 11 KFMB, KMXB, KYSR, WALC, WBAM, WKZL, WPLL, WPTE, WQLH, WSHE, WTMX

Medium (15-29): 6 KLLC, KPLZ, KVUU, KZZP, WKQI, WMBX

Light (Under 15): 18

New Airplay This Week: 1 WMTX

THE SUNDAYS 576/102

Summertime (DGC/Geffen)

Total Stations: 27/Chart Move: 31-27

Heavy (30+): 6 KAMX, KFMB, KLLC, KZZO, WMTX, WPTE

Medium (15-29): 10 KBBT, KMXB, KPEK, KYSR, KVUU, KYYS, KZZP, WALC, WBMX, WPLL

Light (Under 15): 11

New Airplay This Week: 4 KHM, KYYS, WMBX, WSHE

TEXAS 566/62

Say What You Want (Mercury)

Total Stations: 29/Chart Move: 28-28

Heavy (30+): 4 KTNP, KZZO, WMBX, WPTE

Medium (15-29): 14 KBBT, KHM, KLLC, KPLZ, KURB, KZZP, WAEV, WEZB, WLNK, WMC, WPLL, WQLH, WSHE, WTMX

Light (Under 15): 11

New Airplay This Week: 6 KBBT, KMXB, KSMG, WMXL, WQAL, WWDE

OASIS 565/42

Don't Go Away (Epic)

Total Stations: 31/Chart Move: 27-29

Heavy (30+): 5 KBBT, WKZL, WMBX, WPLL, WPTE

Medium (15-29): 14 KAMX, KDMX, KLLC, KPEK, KTNP, KYSR, KYYS, WALC, WBAM, WBMX, WKDD, WMTX, WSHE, WTC

Light (Under 15): 12

New Airplay This Week: 5 KAMX, WEZB, WKQI, WMXL, WTC

LISA LOEB 480/205

I Do (Geffen)

Total Stations: 27/Chart Move: Debut 31

Heavy (30+): 3 KBBT, KFMB, WTC

Medium (15-29): 16 KDMX, KHM, KPEK, KPLZ, KTNP, KYSR, KZZO, WAEV, WALC, WBAM, WBMX, WLNK, WPLL, WPTE, WQLH, WTMX

Light (Under 15): 8

New Airplay This Week: 10 KPEK, KYSR, KZZO, WAEV, WBAM, WEZB, WMBX, WPLL, WQAL, WTMX

MARIAH CAREY 344/36

Butterfly (Columbia)

Total Stations: 26/Chart Move: 38-36

Heavy (30+): 0

Medium (15-29): 12 KSII, KSMG, KURB, KYKY, WAEV, WEZB, WMXL, WMYX, WPLJ, WQLH, WRQX, WVA

Light (Under 15): 14

THE WALLFLOWERS 324/3

Three Marlenas (Interscope)

Total Stations: 18/Chart Move: 37-37

Heavy (30+): 2 KMXB, KYSR

Medium (15-29): 12 KBBT, KTNP, KYSR, KYYS, KZZO, KZZP, WBMX, WIOG, WKZL, WLNK, WPLL, WQLH

Light (Under 15): 4

New Airplay This Week: 2 WMTX, WPLL

CHANTAL KREVIUZUK 315/18

Surrounded (Columbia)

Total Stations: 15/Chart Move: 39-38

Heavy (30+): 3 KAMX, KMXB, KZZO

Medium (15-29): 8 KLLC, KPEK, KYSR, KZZP, WBAM, WMTX, WMBX, WQAL

Light (Under 15): 4

MATCHBOX 20 314/170

3 AM (Lava/Atlantic)

Total Stations: 15/Chart Move: Debut 39

Heavy (30+): 4 KFMB, KMXB, KZZP, WTMX

Medium (15-29): 6 KAMX, KPEK, KYSR, KYYS, WKZL, WSHE

Light (Under 15): 5

New Airplay This Week: 9 KAMX, KHM, KMXB, KPEK, KTNP, KYYS, KZZP, WKZL, WTC

CHART BOUND

Total Plays/Gain

BILLIE MYERS 291/60

Kiss The Rain (Universal)

Total Stations: 19

Heavy (30+): 1 KAMX

Medium (15-29): 9 KLLC, KSTZ, WBAM, WKQI, WMMX, WMBX, WPLL, WPTE, WMMX

Light (Under 15): 9

New Airplay This Week: 3 KDMX, WPLL, WTMX

BLESSID UNION OF SOULS 271/5

I Wanna Be There (EMI/Capitol)

Total Stations: 17

Heavy (30+): 3 KDMX, WKQI, WQAL

Medium (15-29): 5 KVUU, WENS, WMTX, WMXL, WTC

Light (Under 15): 9

THE ROLLING STONES 223/41

Anybody Seen My Baby? (Virgin)

Total Stations: 18

Heavy (30+): 2 KPEK, WTMX

Medium (15-29): 4 KYYS, WKDD, WLNK, WQAL

Light (Under 15): 12

New Airplay This Week: 3 KYYS, WBMX, WTC

SAVAGE GARDEN 200/89

Truly Madly Deeply (Columbia)

Total Stations: 10

Heavy (30+): 3 KYSR, KZZP, WKQI

Medium (15-29): 4 KHM, KVUU, WAKS, WQLH

Light (Under 15): 3

New Airplay This Week: 2 WKDD, WMXL

ROBYN 192/11

Show Me Love (RCA)

Total Stations: 20

Heavy (30+): 2 WAKS, WQLH

Medium (15-29): 4 KSII, WALC, WEZB, WKTI

Light (Under 15): 14

JAI 177/7

I Believe (RCA)

Total Stations: 13

Heavy (30+): 0

Medium (15-29): 6 KLLC, WBAM, WMBX, WPTE, WQAL, WSHE

Light (Under 15): 7

ALANA DAVIS 165/49

32 Flavors (Elektra/EEG)

Total Stations: 15

Heavy (30+): 1 KMXB

Medium (15-29): 4 KFMB, WBAM, WMBX, WPTE

Light (Under 15): 10

New Airplay This Week: 4 KFMB, KLLC, KTNP, WBMX

MOST NEW STATIONS

No. Of Stations

LISA LOEB 10

I Do (Geffen)

MATCHBOX 20 9

3 AM (Lava/Atlantic)

TEXAS 6

Say What You Want (Mercury)

HANSON 155/17

I Will Come To You (Mercury)

Total Stations: 15

Heavy (30+): 1 WQLH

Medium (15-29): 5 WAKS, WEZB, WKDD, WKQI, WPLJ

Light (Under 15): 9

BOYZ II MEN 142/23

4 Seasons Of Loneliness (Motown)

Total Stations: 16

Heavy (30+): 1 WQLH

Medium (15-29): 3 KSII, WEZB, WMXL

Light (Under 15): 12

THIRD EYE BLIND 139/75

How's It Going To Be (Elektra/EEG)

Total Stations: 15

Heavy (30+): 1 KZZO

Medium (15-29): 2 KBBT, WBAM

Light (Under 15): 12

New Airplay This Week: 5 KBBT, WKDD, WMTX, WPLL, WQLH

BARBRA STREISAND - CELINE DION 122/5

Tell Him (550 Music/Epic/Columbia)

Total Stations: 10

Heavy (30+): 0

Medium (15-29): 4 KSMG, WKDD, WVA, WVTY

Light (Under 15): 6

New Airplay This Week: 1 KSII

SARAH MCLACHLAN 117/73

Sweet Surrender (Netwerk/Arista)

Total Stations: 7

Heavy (30+): 1 WBMX

Medium (15-29): 3 KAMX, KMXB, KTNP

Light (Under 15): 3

New Airplay This Week: 5 KAMX, KLLC, KMXB, KTNP, WKZL

ALLURE FEAT. 112 116/21

All Cried Out (Track Masters/Crave)

Total Stations: 13

Heavy (30+): 2 KSII, WQLH

Medium (15-29): 1 WMXL

Light (Under 15): 10

BARENAKED LADIES 94/2

The Old Apartment (Reprise)

Total Stations: 6

Heavy (30+): 1 WBMX

Medium (15-29): 1 KTNP

Light (Under 15): 4

KAMI LYLE 92/8

Polka Dots (MCA)

Total Stations: 7

Heavy (30+): 2 KFMB, KLLC

Medium (15-29): 0

Light (Under 15): 5

New Airplay This Week: 3 KKP, WMTX, WQAL

BIG HEAD TODD & THE MONSTERS 83/8

Please Don't Tell Her (Revolution)

Total Stations: 4

Heavy (30+): 1 WKZL

Medium (15-29): 2 WMBX, WPTE

Light (Under 15): 1

DONNA LEWIS & RICHARD MARX 77/13

At The Beginning (Atlantic)

Total Stations: 11

Heavy (30+): 0

Medium (15-29): 4 KPLZ, WAKS, WKTI, WVA

Light (Under 15): 7

GARY BARLOW 77/18

So Help Me Girl (Arista)

Total Stations: 4

Heavy (30+): 0

Medium (15-29): 3 KSSK, WKTI, WVA

Light (Under 15): 1

THIS WEEK	LAST WEEK	WEEKS ON	TITLE/LABEL/PROMOTION LABEL	ARTIST	TW	LW	DETECTIONS
			*** No. 1 ***				
1	3	16	I DON'T WANT TO WAIT IMAGO/WARNER BROS. 1 week at No. 1	PAULA COLE	2398	2369	
2	2	28	ALL FOR YOU UNIVERSAL	SISTER HAZEL	2370	2392	
3	1	17	FOOLISH GAMES ATLANTIC	JEWEL	2312	2464	
4	4	12	FLY LAVA/ATLANTIC	SUGAR RAY	1986	1962	
5	5	27	SEMI-CHARMED LIFE ELEKTRA/EEG	THIRD EYE BLIND	1934	1942	
6	6	18	BUILDING A MYSTERY NETWERK/ARISTA	SARAH MCLACHLAN	1801	1922	
7	7	18	PUSH LAVA/ATLANTIC	MATCHBOX 20	1760	1825	
8	8	19	IF YOU COULD ONLY SEE POLYDOR/A&M	TONIC	1622	1627	
9	10	9	WALKIN' ON THE SUN INTERSCOPE	SMASH MOUTH	1501	1484	
10	11	10	HOW DO I LIVE CURB	LEANN RIMES	1487	1379	
11	9	26	HOW BIZARRE HUH/MERCURY	OMC	1473	1552	
12	14	5	TUBTHUMPING REPUBLIC/UNIVERSAL	CHUMBAWAMBA	1463	1198	
13	12	54	BARELY BREATHING ATLANTIC	DUNCAN SHEIK	1379	1329	
14	13	37	SUNNY CAME HOME COLUMBIA	SHAWN COLVIN	1215	1268	
15	15	38	ONE HEADLIGHT INTERSCOPE	THE WALLFLOWERS	1157	1187	
16	18	11	TAKES A LITTLE TIME A&M	AMY GRANT	997	928	
17	16	28	THE FRESHMEN RCA	THE VERVE PIPE	934	987	
18	19	11	CRIMINAL CLEAN SLATE/WORK	FIONA APPLE	903	901	
19	21	16	QUIT PLAYING GAMES (WITH MY HEART) JIVE	BACKSTREET BOYS	884	839	
20	17	37	CRASH INTO ME RCA	DAVE MATTHEWS BAND	872	955	
21	20	15	THE IMPRESSION THAT I GET BIG RIG/MERCURY	THE MIGHTY MIGHTY BOSSTONES	788	839	
22	24	25	A CHANGE WOULD DO YOU GOOD A&M	SHERYL CROW	756	765	
23	23	17	THE DIFFERENCE INTERSCOPE	THE WALLFLOWERS	745	773	
24	25	7	*** AIRPOWER *** SOMETHING ABOUT THE WAY YOU LOOK TONIGHT ROCKET/A&M	ELTON JOHN	717	633	
25	22	9	SILVER SPRINGS REPRISE	FLEETWOOD MAC	686	775	
26	26	7	LEGEND OF A COWGIRL COLUMBIA	IMANI COPPOLA	640	603	
27	31	4	SUMMERTIME DGC/GEFFEN	THE SUNDAYS	576	474	
28	28	5	SAY WHAT YOU WANT MERCURY	TEXAS	566	504	
29	27	5	DON'T GO AWAY EPIC	OASIS	565	523	
30	29	24	SHAME ON YOU EPIC	INDIGO GIRLS	508	492	
31	NEW		I DO GEFFEN	LISA LOEB	480	275	
32	32	5	YOU AND THE MONA LISA COLUMBIA	SHAWN COLVIN	414	434	
33	30	9	ON MY OWN MUTE/EPIC	PEACH UNION	403	486	
34	33	7	MOST PRECARIOUS A&M	BLUES TRAVELER	360	412	
35	34	13	2 BECOME 1 VIRGIN	SPICE GIRLS	358	410	
36	38	2	BUTTERFLY COLUMBIA	MARIAH CAREY	344	308	
37	37	3	THREE MARLENAS INTERSCO				

SONG ACTIVITY REPORTS

For Week Ending October 26, 1997

ADULT TOP 40 ADULT CONTEMPORARY

FIONA APPLE 903/2				
Criminal (Clean Slate/WOR)				
Total Stations: 43 Chart Move: 19-18				
Chart Move: 19-18				
Total Stations: 43				
Chart Move: 19-18				
New York	VH1	16	15	18
LA	WNSR	1	13	28
Chicago	WLSW	27	26	24
San Fran.	WYXR	23	20	13
Phila.	WYXR	23	20	13
Detroit	WQXI	39	41	30
Wash., DC	WROX	21	17	21
Houston	KHMX	25	9	3
Boston	WBXX	25	9	3
Miami	WPLD	37	25	28
Seattle	KPLZ	22	24	25
San Diego	KFMB	50	49	39
Min.	KSTP	49	52	47
St. Louis	KYKY	42	45	37
Balt.	WYTY	37	32	33
Phoen.	KZZP	23	31	35
Tampa	WAKS	32	38	39
Cleveland	WOAL	32	28	20
Port, OR	KBBT	39	43	37
Cincinnati	WYXX	22	24	25
Kan City	WKTI	1	1	1
Milwaukee	WYMY	48	45	44
Sacram.	KZZO	48	45	44
Provid.	WSNE	37	37	36
Norfolk	WDDE	37	37	36

BACKSTREET BOYS 884/45				
Quit Playing Games (With My Heart) (Jive)				
Total Stations: 42 Chart Move: 21-19				
Chart Move: 21-19				
Total Stations: 42				
Chart Move: 21-19				
New York	VH1	29	1	4
LA	WNSR	1	1	1
Chicago	WLSW	11	33	31
San Fran.	WYXR	32	28	27
Phila.	WYXR	32	28	27
Detroit	WQXI	33	37	36
Wash., DC	KHMX	33	37	36
Houston	KHMX	33	37	36
Boston	WBXX	1	1	1
Miami	WPLD	29	28	24
Seattle	KPLZ	29	28	24
San Diego	KFMB	1	1	1
Min.	KSTP	25	28	34
St. Louis	KYKY	25	28	34
Balt.	WYTY	25	28	34
Phoen.	KZZP	25	28	34
Tampa	WAKS	30	34	37
Cleveland	WOAL	26	25	19
Port, OR	KBBT	26	25	19
Cincinnati	WYXX	34	30	16
Kan City	WKTI	28	20	12
Milwaukee	WYMY	24	20	12
Sacram.	KZZO	40	46	61
Provid.	WSNE	18	19	20
Norfolk	WDDE	26	23	25

CHUMBAWAMBA 1463/265				
Tubthumping (Republ/Universal)				
Total Stations: 57 Chart Move: 14-12				
Chart Move: 14-12				
Total Stations: 57				
Chart Move: 14-12				
New York	VH1	13	32	90
LA	WNSR	1	1	1
Chicago	WLSW	36	35	31
San Fran.	WYXR	60	56	48
Phila.	WYXR	60	56	48
Detroit	WQXI	25	21	15
Wash., DC	WROX	32	26	4
Houston	KHMX	29	19	4
Boston	WBXX	20	15	20
Miami	WPLD	62	52	42
Seattle	KPLZ	29	27	11
San Diego	KFMB	76	50	34
Min.	KSTP	1	1	1
St. Louis	KYKY	35	36	31
Balt.	WYTY	23	29	14
Phoen.	KZZP	45	34	35
Tampa	WAKS	30	34	37
Cleveland	WOAL	26	25	19
Port, OR	KBBT	26	25	19
Cincinnati	WYXX	34	30	16
Kan City	WKTI	28	20	12
Milwaukee	WYMY	24	20	12
Sacram.	KZZO	40	46	61
Provid.	WSNE	18	19	20
Norfolk	WDDE	26	23	25

GARY BARLOW 795/93				
So Help Me Girl (Arista)				
Total Stations: 51 Chart Move: 10-7				
Chart Move: 10-7				
Total Stations: 51				
Chart Move: 10-7				
New York	VH1	9	11	9
LA	WNSR	20	20	20
Chicago	WLSW	16	14	10
San Fran.	WYXR	32	31	27
Phila.	WYXR	32	31	27
Detroit	WQXI	32	31	27
Wash., DC	WROX	32	31	27
Houston	KHMX	32	31	27
Boston	WBXX	20	15	20
Miami	WPLD	62	52	42
Seattle	KPLZ	29	27	11
San Diego	KFMB	76	50	34
Min.	KSTP	1	1	1
St. Louis	KYKY	35	36	31
Balt.	WYTY	23	29	14
Phoen.	KZZP	45	34	35
Tampa	WAKS	30	34	37
Cleveland	WOAL	26	25	19
Port, OR	KBBT	26	25	19
Cincinnati	WYXX	34	30	16
Kan City	WKTI	28	20	12
Milwaukee	WYMY	24	20	12
Sacram.	KZZO	40	46	61
Provid.	WSNE	18	19	20
Norfolk	WDDE	26	23	25

MICHAEL BOLTON 427/164				
The Best Of Love (Columbia)				
Total Stations: 43 Chart Move: 26-17				
Chart Move: 26-17				
Total Stations: 43				
Chart Move: 26-17				
New York	VH1	1	1	1
LA	WNSR	1	1	1
Chicago	WLSW	8	9	18
San Fran.	WYXR	1	1	1
Phila.	WYXR	1	1	1
Detroit	WQXI	4	1	1
Wash., DC	WROX	4	1	1
Houston	KHMX	4	1	1
Boston	WBXX	1	1	1
Miami	WPLD	13	7	1
Seattle	KPLZ	13	7	1
San Diego	KFMB	13	7	1
Min.	KSTP	13	7	1
St. Louis	KYKY	13	7	1
Balt.	WYTY	13	7	1
Phoen.	KZZP	13	7	1
Tampa	WAKS	13	7	1
Cleveland	WOAL	13	7	1
Port, OR	KBBT	13	7	1
Cincinnati	WYXX	13	7	1
Kan City	WKTI	13	7	1
Milwaukee	WYMY	13	7	1
Sacram.	KZZO	13	7	1
Provid.	WSNE	13	7	1
Norfolk	WDDE	13	7	1

PAULA COLE 2398/29				
I Don't Want To Wait (Imago/Warner Bros.)				
Total Stations: 64 Chart Move: 3-1				
Chart Move: 3-1				
Total Stations: 64				
Chart Move: 3-1				
New York	VH1	28	30	37
LA	WNSR	29	27	41
Chicago	WLSW	40	41	40
San Fran.	WYXR	49	51	49
Phila.	WYXR	49	51	49
Detroit	WQXI	34	36	35
Wash., DC	WROX	34	36	35
Houston	KHMX	42	42	46
Boston	WBXX	42	42	46
Miami	WPLD	51	49	51
Seattle	KPLZ	40	39	45
San Diego	KFMB	50	49	39
Min.	KSTP	49	52	47
St. Louis	KYKY	51	49	39
Balt.	WYTY	34	33	30
Phoen.	KZZP	51	49	39
Tampa	WAKS	29	29	24
Cleveland	WOAL	42	48	48
Port, OR	KBBT	42	48	48
Cincinnati	WYXX	29	31	41
Kan City	WKTI	6	2	2
Milwaukee	WYMY	25	26	7
Sacram.	KZZO	27	29	30
Provid.	WSNE	27	29	30
Norfolk	WDDE	32	27	21

IMANI COPPOLA 640/37				
Legend Of A Cowgirl (Columbia)				
Total Stations: 35 Chart Move: 26-26				
Chart Move: 26-26				
Total Stations: 35				
Chart Move: 26-26				
New York	VH1	10	9	4
LA	WNSR	1	1	1
Chicago	WLSW	6	22	36
San Fran.	WYXR	24	23	28
Phila.	WYXR	24	23	28
Detroit	WQXI	17	14	15
Wash., DC	WROX	17	14	15
Houston	KHMX	35	32	27
Boston	WBXX	35	32	27
Miami	WPLD	35	32	27
Seattle	KPLZ	20	22	9
San Diego	KFMB	48	36	36
Min.	KSTP	48	36	36
St. Louis	KYKY	48	36	36
Balt.	WYTY	44	45	43
Phoen.	KZZP	29	33	26
Tampa	WAKS	29	33	26
Cleveland	WOAL	9	5	14
Port, OR	KBBT	9	5	14
Cincinnati	WYXX	35	41	23
Kan City	WKTI	6	2	2
Milwaukee	WYMY	6	2	2
Sacram.	KZZO	27	29	30
Provid.	WSNE	27	29	30
Norfolk	WDDE	37	34	26

AMY GRANT 997/69				
Takes A Little Time (A&M)				
Total Stations: 42 Chart Move: 18-16				
Chart Move: 18-16				
Total Stations: 42				
Chart Move: 18-16				
New York	VH1	9	8	7
LA	WNSR	1	1	1
Chicago	WLSW	27	21	15
San Fran.	WYXR	23	21	23
Phila.	WYXR	23	21	23
Detroit	WQXI	11	12	10
Wash., DC	WROX	11	12	10
Houston	KHMX	35	32	27
Boston	WBXX	35	32	27
Miami	WPLD	35	32	27
Seattle	KPLZ	27	31	31
San Diego	KFMB	4	11	30
Min.	KSTP	4	11	30
St. Louis	KYKY	36	37	33
Balt.	WYTY	22	21	15
Phoen.	KZZP	36	37	33
Tampa	WAKS	27	31	26
Cleveland	WOAL	27	31	26
Port, OR	KBBT	27	31	26
Cincinnati	WYXX	35	41	23
Kan City	WKTI	6	2	2
Milwaukee	WYMY	6	2	2
Sacram.	KZZO	27	29	30
Provid.	WSNE	27	29	30
Norfolk	WDDE	25	30	34

JIM BRICKMAN FEAT. COLLIN RAY & SUSAN ASHTON 482/49				
The Gift (Windham Hill)				
Total Stations: 45 Chart Move: 17-14				
Chart Move: 17-14				
Total Stations: 45				
Chart Move: 17-14				
New York	VH1	1	1	1
LA	WNSR	1	1	1
Chicago	WLSW	25	25	13
San Fran.	WYXR	4	4	4
Phila.	WYXR	4	4	4
Detroit	WQXI	8	2	1
Wash., DC	WROX	8	2	1
Houston	KHMX	1	1	1
Boston	WBXX	1	1	1
Miami	WPLD	1	1	1
Seattle	KPLZ	1	1	1
San Diego	KFMB	1	1	1
Min.	KSTP	1	1	1
St. Louis	KYKY	1	1	1
Balt.	WYTY	1	1	1
Phoen.	KZZP	1	1	1
Tampa	WAKS	1	1	1
Cleveland	WOAL	1	1	1
Port, OR	KBBT	1	1	1
Cincinnati	WYXX	1	1	1
Kan City	WKTI	1	1	1
Milwaukee	WYMY	1	1	1
Sacram.	KZZO	1	1	1
Provid.	WSNE	1	1	1
Norfolk	WDDE	1	1	1

MARIAH CAREY 602/57				
Butterfly (Columbia)				
Total Stations: 48 Chart Move: 12-11				
Chart Move: 12-11				
Total Stations: 48				
Chart Move: 12-11				
New York	VH1	16	14	7
LA	WNSR	5	8	10
Chicago	WLSW	17	18	15
San Fran.	WYXR	20	18	38
Phila.	WYXR	20	18	38
Detroit	WQXI	16	15	8
Wash., DC	WROX	16	15	8
Houston	KHMX	16	15	8
Boston	WBXX	16	15	8
Miami	WPLD	16	15	8
Seattle	KPLZ	16	15	8
San Diego	KFMB	16	15	8
Min.	KSTP	16	15	8
St. Louis	KYKY	16	15	8
Balt.	WYTY	16	15	8
Phoen.	KZZP	16	15	8
Tampa	WAKS	16	15	8
Cleveland	WOAL	16	15	8
Port, OR	KBBT	16	15	8
Cincinnati	WYXX	16	15	8
Kan City	WKTI	16	15	8
Milwaukee	WYMY	16	15	8
Sacram.	KZZO	16	15	8
Provid.	WSNE	16	15	8
Norfolk	WDDE	16	15	8

ELTON JOHN 717/84				
Something About The Way You Look Tonight (Rocket/A&M)				
Total Stations: 37 Chart Move: 25-24				
Chart Move: 25-24				
Total Stations: 37				
Chart Move: 25-24				
New York	VH1	15	15	12
LA	WNSR	23	23	23
Chicago	WLSW	24	14	9
San Fran.	WYXR	45	43	31
Phila.	WYXR	45	43	31
Detroit	WQXI	26	34	31
Wash., DC	WROX	26	34	31
Houston	KHMX	48	45	30
Boston	WBXX	48	45	30
Miami	WPLD	11	15	12
Seattle	KPLZ	11	15	12
San Diego	KFMB	11	15	12
Min.	KSTP	11	15	12
St. Louis	KYKY	11	15	12
Balt.	WYTY	11	15	12
Phoen.	KZZP	11	15	12
Tampa	WAKS	11	15	12
Cleveland	WOAL	11	15	12
Port, OR	KBBT	11	15	12
Cincinnati	WYXX	11	15	12

BDS IMPACT

AIRPOWER (Minimum 400 detections for the first time)

MICHAEL BOLTON 427/164

The Best Of Love (Columbia)
Total Stations: 43/Chart Move: 26-17
Heavy (21+ plays): 3 KGBY, KMZQ, WMJQ
Medium (14-20): 9 KTDY, KTHT, WBBQ, WEZF, WGSY, WINK, WLTS, WMXS, WSLQ
Light (Under 14): 31
New Airplay This Week: 11 KESZ, KEZK, KMGA, WARM, WLHT, WMAG, WMJQ, WRVF, WSHH, WSLQ, WTCB

MOST NEW STATIONS

MICHAEL BOLTON 11
The Best Of Love (Columbia)

BILLY JOEL 8
Hey Girl (Columbia)

TONI BRAXTON WITH KENNY G 6
How Could An Angel Break My Heart (LaFace/Arista)

Medium (14-20): 1 WMXS
Light (Under 14): 10
New Airplay This Week: 2 KISC, WMXS

★ PAUL CARRACK 81/5
Eyes Of Blue (Ark 21)

Total Stations: 9
Heavy (21+): 0
Medium (14-20): 3 KTDY, WLAC, WMXS
Light (Under 14): 6

★ JOHN TESH 69/11
Avalon (GTSP)

Total Stations: 17
Heavy (21+): 0
Medium (14-20): 1 WSHH
Light (Under 14): 16

★ OMC 61/13
How Bizarre (Huh!/Mercury)

Total Stations: 5
Heavy (21+): 1 WJDX
Medium (14-20): 2 KLYF, WRMF
Light (Under 14): 2
New Airplay This Week: 1 KLYF

★ SUGAR RAY 55/12
Fly (Lava/Atlantic)

Total Stations: 5
Heavy (21+): 1 WJDX
Medium (14-20): 1 KEZR
Light (Under 14): 3

★ JACKSON BROWNE 46/14
The Next Voice You Hear (Elektra/EEG)

Total Stations: 7
Heavy (21+): 0
Medium (14-20): 0
Light (Under 14): 7
New Airplay This Week: 1 KMGA

Medium (14-20): 4 KEZR, KLYF, WLAC, WRMF
Light (Under 14): 4

★ TONI BRAXTON WITH KENNY G 120/80
How Could An Angel Break My Heart (LaFace/Arista)

Total Stations: 24
Heavy (21+): 0
Medium (14-20): 2 KTDY, WLTS
Light (Under 14): 22
New Airplay This Week: 6 KESZ, KKCW, KTDY, WLIT, WRCH, WRRM

BEE GEES 102/-5
Still Waters (Run Deep) (Polydor/A&M)

Total Stations: 13
Heavy (21+): 0
Medium (14-20): 2 WLIT, WMXS
Light (Under 14): 11
New Airplay This Week: 1 KIOI

THIRD EYE BLIND 100/16
Semi-Charmed Life (Elektra/EEG)

Total Stations: 6
Heavy (21+): 2 KEZR, WJDX
Medium (14-20): 0
Light (Under 14): 4

AARON NEVILLE 99/1
Say What's In My Heart (A&M)

Total Stations: 16
Heavy (21+): 1 KTDY
Medium (14-20): 0
Light (Under 14): 15
New Airplay This Week: 1 WMXS

PETER CETERA FEAT. AZ YET 88/6
You're The Inspiration (River North)

Total Stations: 12
Heavy (21+): 1 WINK

AIRPOWER BOUND

SARAH MCLACHLAN 162/-4
Building A Mystery (Nettwerk/Arista)

Total Stations: 11/Chart Move: Re-Entry 28
Heavy (21+): 3 KEZR, WJDX, WMJQ
Medium (14-20): 2 WINK, WTFM
Light (Under 14): 6
New Airplay This Week: 1 KTDY

BILLY JOEL 150/69
Hey Girl (Columbia)

Total Stations: 19/Chart Move: Debut 29
Heavy (21+): 0
Medium (14-20): 2 KKCW, KUDL
Light (Under 14): 17
New Airplay This Week: 8 KMGA, WARM, WDKO, WGSY, WLIF, WLIT, WLTW, WRCH

BOYZ II MEN 141/11
4 Seasons Of Loneliness (Motown)

Total Stations: 17/Chart Move: Debut 30
Heavy (21+): 2 KGBY, WRMF
Medium (14-20): 0
Light (Under 14): 15
New Airplay This Week: 1 WRVF

CHART BOUND

SAVAGE GARDEN 125/7
I Want You (Columbia)

Total Stations: 9
Heavy (21+): 1 WFLC

Table with columns: THIS WEEK, LAST WEEK, WEEKS ON, TITLE/LABEL/PROMOTION LABEL, ARTIST, TW, LW. Includes records like HOW DO I LIVE, SOMETHING ABOUT THE WAY YOU LOOK TONIGHT, QUIT PLAYING GAMES, TAKES A LITTLE TIME, TELL HIM, PROMISE AIN'T ENOUGH, SO HELP ME GIRL, FOOLISH GAMES, SILVER SPRINGS, 2 BECOME 1, BUTTERFLY, SUNNY CAME HOME, AT THE BEGINNING, THE GIFT, YOU WERE MEANT FOR ME, I DON'T WANT TO WAIT, THE BEST OF LOVE, THE ONLY ONE, CANDLE IN THE WIND 1997, CHANGE THE WORLD, ALL FOR YOU, FOR ONCE IN OUR LIVES, GO THE DISTANCE, DO YOU LOVE ME THAT MUCH, A SMILE LIKE YOURS, LITTLE MORE TIME WITH YOU, I JUST CAN'T LET GO, BUILDING A MYSTERY, HEY GIRL, 4 SEASONS OF LONELINESS.

Records showing an increase in detections over the previous week, regardless of chart movement. A record which has been on the chart for more than 20 weeks will not receive a bullet, even if it registers an increase in detections. Airpower awarded to those records which attain 400 detections for the first time. If two records are tied in number of plays, the record being played on more stations is placed first. Records below the top 20 are removed from the chart after 26 weeks.

ADULT CONTEMPORARY POWER PLAYLISTS

106.7 LITE FM PD/MD: Jim Ryan
1 LeAnn Rimes, How Do I Live 15 16
2 Barbra Streisand & Celine Dion, Tell Him 14 17
3 Monica, For You I Will 13 13
4 Kenny Loggins, For The First Time 13 12
5 Bryan Adams, I'll Always Be Right There 12 12
6 Spice Girls, 2 Become 1 12 9
7 Toni Braxton, Un-Break My Heart 12 12
8 Billy Joel, Hey Girl 12 5
9 Donna Lewis & Richard Marx, At The Beginning 12 11
10 Backstreet Boys, Quit Playing Games 12 12
11 Elton John, Something About The Way You 12 13
12 Paul Carrack, For Once In Our Lives 11 12
13 Amy Grant, Takes A Little Time 10 9
14 Gary Barlow, So Help Me Girl 9 10
15 4 Seasons, December 1963 8 6
16 Celine Dion, Because You Loved Me 8 7
17 Gloria Estefan, I-2-3 7 5
18 Elton John, Candle In The Wind 7 7
19 Lionel Richie, All Night Long 7 6
20 Bonnie Raitt, Something To Talk About 7 5

KOST PD: Jhani Kaye MD: Johnny Chiang
1 Backstreet Boys, Quit Playing Games 19 18
2 LeAnn Rimes, How Do I Live 18 18
3 Elton John, Something About The Way You 18 19
4 Mariah Carey, Butterfly 17 18
5 Monica, For You I Will 17 17
6 Babyface, Every Time I Close My Eyes 15 17
7 Selena, Dreaming Of You 14 12
8 Shawn Colvin, Sunny Came Home 13 12
9 Jim Brickman, Valentine 13 13
10 Michael Bolton, Go The Distance 12 13
11 Spice Girls, 2 Become 1 12 15
12 Donna Lewis, I Love You Always Forever 12 11
13 Toni Braxton, Un-Break My Heart 11 13
14 The Tony Rich Project, Nobody Knows 11 10
15 Whitney Houston, I Believe In You And Me 11 8
16 R. Kelly, I Believe I Can Fly 10 7
17 Journey, When You Love A Woman 10 8
18 Seal, Fly Like An Eagle 10 9
19 Eric Clapton, Change The World 10 9
20 Celine Dion, It's All Coming Back To Me 10 11

KBIG PD: Steve Strait MD: Dave Verdery
1 LeAnn Rimes, How Do I Live 32 33
2 Bryan Adams, I'll Always Be Right There 32 29
3 Barbra Streisand & Celine Dion, Tell Him 31 32
4 Spice Girls, 2 Become 1 30 32
5 Backstreet Boys, Quit Playing Games 29 29
6 Jewel, Foolish Games 28 30
7 Toni Braxton, Un-Break My Heart 28 27
8 Elton John, Something About The Way You 27 27
9 Jewel, You Were Meant For Me 26 26
10 Gary Barlow, So Help Me Girl 20 22
11 Kenny Loggins, For The First Time 19 31
12 R. Kelly, I Believe I Can Fly 18 16
13 Shawn Colvin, Sunny Came Home 18 16
14 Peter Cetera, Do You Love Me That Much 16 18
15 Jim Brickman, Valentine 16 13
16 Bob Carlisle, Butterfly Kisses 15 14
17 Eric Clapton, Change The World 15 14
18 Rod Stewart, So Far Away 15 11
19 Take That, Back For Good 14 21
20 Michael Bolton, Go The Distance 14 15

93.9 LITE FM PD/MD: Mark Edwards
1 Daryl Hall & John Oates, Promise Ain't E 19 15
2 LeAnn Rimes, How Do I Live 18 16
3 Bee Gees, Still Waters Run Deep 18 18
4 Barbra Streisand & Celine Dion, Tell Him 18 18
5 Amy Grant, Takes A Little Time 17 18
6 Elton John, Something About The Way You 17 18
7 Mariah Carey, Butterfly 16 18
8 Gary Barlow, So Help Me Girl 16 11
9 Fleetwood Mac, Silver Springs 16 17
10 Spice Girls, 2 Become 1 15 17
11 Mike & The Mechanics, The Living Years 10 6
12 Chris De Burgh, The Lady In Red 10 7
13 Paul Carrack, For Once In Our Lives 10 6
14 Jon Cooker & Jennifer Warnes, Up Where We 9 8
15 Police, Every Breath You Take 9 8
16 Monica, For You I Will 9 5
17 Commodores, Three Times A Lady 9 5
18 Donna Lewis & Richard Marx, At The Beginning 9 10
19 Chicago, The Only One 9 8
20 Billy Joel, The Longest Time 8 10

B101 PD: Chris Conley
1 Monica, For You I Will 27 27
2 Spice Girls, 2 Become 1 27 27
3 LeAnn Rimes, How Do I Live 27 26
4 Daryl Hall & John Oates, Promise Ain't E 26 27
5 Michael Bolton, Go The Distance 25 26
6 Elton John, Something About The Way You 24 25
7 Journey, When You Love A Woman 12 11
8 Natalie Cole, A Smile Like Yours 12 10
9 Tina Turner, Missing You 12 11
10 Kenny Loggins, For The First Time 12 8
11 Bonnie Raitt, Something To Talk About 11 9
12 Mariah Carey, Hero 11 6
13 R. Kelly, I Believe I Can Fly 11 9
14 Rod Stewart, If We Fall In Love Tonight 11 10
15 Eric Carmen, Hungry Eyes 11 12
16 Eric Clapton, Change The World 11 9
17 Jon Secada, Do You Believe In Us 11 10
18 Bill Medley & Jennifer Warnes, I've Had 11 9
19 Paul Young, What Becomes Of The Broken 11 11
20 James Taylor, Your Smiling Face 11 9

WINDY 100 PD: Mark Hamlin
1 Backstreet Boys, Quit Playing Games 39 37
2 LeAnn Rimes, How Do I Live 35 36
3 Elton John, Candle In The Wind 35 31
4 Amy Grant, Takes A Little Time 34 37
5 Elton John, Something About The Way You 34 36
6 Gary Barlow, So Help Me Girl 34 35
7 Fleetwood Mac, Silver Springs 33 30
8 Natalie Cole, A Smile Like Yours 29 23
9 Spice Girls, 2 Become 1 25 25
10 Jim Brickman Feat. Collin Raye, The Gift 25 22
11 Shawn Colvin, Sunny Came Home 24 24
12 Kenny Loggins, For The First Time 24 21
13 Chicago, The Only One 22 23
14 Daryl Hall & John Oates, Promise Ain't E 21 24
15 Mariah Carey, Butterfly 21 18
16 Sophie B. Hawkins, As I Lay Me Down 16 11
17 Eric Clapton, Change The World 16 14
18 Bob Carlisle, Butterfly Kisses 16 16
19 Donna Lewis, I Love You Always Forever 15 16
20 Celine Dion, It's All Coming Back To Me 14 16

K101 PD: Bob Hamilton
1 Kenny Loggins, For The First Time 42 39
2 LeAnn Rimes, How Do I Live 40 40
3 Jewel, Foolish Games 39 31
4 Elton John, Something About The Way You 39 31
5 Gary Barlow, So Help Me Girl 38 15
6 Barbra Streisand & Celine Dion, Tell Him 28 15
7 Shawn Colvin, Sunny Came Home 28 27
8 Amy Grant, Takes A Little Time 28 23
9 Backstreet Boys, Quit Playing Games 26 21
10 R. Kelly, I Believe I Can Fly 21 25
11 Eric Clapton, Change The World 17 11
12 Jewel, You Were Meant For Me 16 17
13 Take That, Back For Good 14 13
14 No Doubt, Don't Speak 13 20
15 Bryan Adams, I'll Always Be Right There 13 6
16 Selena, I Could Fall In Love 13 15
17 Toni Braxton, Un-Break My Heart 13 12
18 Annie Lennox, Walking On Broken Glass 12 13
19 Whitney Houston, I Believe In You And Me 12 13
20 Seal, Kiss From A Rose 12 10

KVIL PD: Bill Curtis MD: Alex O'Neal
1 LeAnn Rimes, How Do I Live 25 23
2 Michael Bolton, Go The Distance 25 24
3 Toni Braxton, Un-Break My Heart 24 23
4 Jim Brickman, Valentine 24 21
5 Celine Dion, It's All Coming Back To Me 23 20
6 Barbra Streisand & Bryan Adams, I Found 21 22
7 Jewel, I Believe I Can Fly 20 9
8 Bryan Adams, Let's Make A Night To Remember 19 18
9 Backstreet Boys, Quit Playing Games 17 17
10 Barbra Streisand & Celine Dion, Tell Him 10 8
11 Bryan Adams, (Everything I Do) I Do It For 9 3
12 Natalie Cole, A Smile Like Yours 9 5
13 Gary Barlow, So Help Me Girl 9 7
14 Jim Brickman Feat. Collin Raye, The Gift 8 2
15 Mariah Carey & Boyz II Men, One Sweet Day 7 4
16 Elton John, Something About The Way You 7 6
17 Amy Grant, Takes A Little Time 7 7
18 Rod Stewart, Reason To Believe 6 3
19 Elton John, Can You Feel The Love Tonight 6 5
20 Bette Midler, From A Distance 6 6

SOFT ROCK 97.1 PD: Darren Davis MD: Randi Martin
1 LeAnn Rimes, How Do I Live 39 37
2 Jewel, Foolish Games 37 34
3 Elton John, Something About The Way You 37 35
4 Barbra Streisand & Celine Dion, Tell Him 33 30
5 Gary Barlow, So Help Me Girl 33 36
6 Donna Lewis & Richard Marx, At The Beginning 29 31
7 Kenny Loggins, For The First Time 29 23
8 Backstreet Boys, Quit Playing Games 28 22
9 Peter Cetera, Do You Love Me That Much 27 30
10 Shawn Colvin, Sunny Came Home 27 27
11 Jim Brickman, Valentine 16 17
12 Elton John, Candle In The Wind 14 18
13 Sophie B. Hawkins, As I Lay Me Down 14 9
14 Whitney Houston, I Will Always Love You 13 13
15 Celine Dion, Because You Loved Me 12 11
16 John Fogerty, Centerfield 17 13
17 Toni Braxton, Un-Break My Heart 17 12
18 Chicago, Hard To Say I'm Sorry 12 6
19 Eric Clapton, Layla 12 7
20 All-4-One, I Can Love You Like That 12 12

WDOK PD: Sue Wilson MD: Scott Miller
1 Barbra Streisand & Celine Dion, Tell Him 19 13
2 Amy Grant, Takes A Little Time 14 11
3 Elton John, Something About The Way You 14 12
4 Gary Barlow, So Help Me Girl 13 13
5 Michael Bolton, The Best Of Love 13 10
6 Jim Brickman Feat. Collin Raye, The Gift 12 11
7 Chicago, The Only One 12 9
8 Donna Lewis & Richard Marx, At The Beginning 11 5
9 Daryl Hall & John Oates, Promise Ain't E 11 10
10 Fleetwood Mac, Silver Springs 11 15
11 Barry Manilow, I Go Crazy 10 9
12 Elton John, Candle In The Wind 10 11
13 Jewel, Foolish Games 9 6
14 Chris De Burgh, The Lady In Red 9 14
15 Monica, For You I Will 8 8
16 John Fogerty, Centerfield 8 8
17 Berlin, Take My Breath Away 8 11
18 Mariah Carey, Butterfly 8 11
19 LeAnn Rimes, How Do I Live 8 6
20 Paul Carrack, Eyes Of Blue 8 12

WLTE PD/MD: Gary Nolan
1 Sarah Brightman & Andrea Bocelli, Time To 17 12
2 Peter Cetera, Do You Love Me That Much 16 14
3 Barbra Streisand & Celine Dion, Tell Him 16 14
4 Whitney Houston, I Believe In You And Me 16 11
5 LeAnn Rimes, How Do I Live 15 16
6 Spice Girls, 2 Become 1 14 15
7 Elton John, Something About The Way You 14 14
8 Kenny Loggins, For The First Time 14 13
9 Toni Braxton, Un-Break My Heart 14 11
10 Linda Eder, Something To Believe In 14 15
11 Donna Lewis, I Love You Always Forever 14 12
12 Jim Brickman, Valentine 14 11
13 Shawn Colvin, Sunny Came Home 13 14
14 Natalie Cole, A Smile Like Yours 13 13
15 Fleetwood Mac, Silver Springs 13 15
16 Journey, When You Love A Woman 13 15
17 Babyface, How Come, How Long 13 10
18 Toni Braxton, I Don't Want To 13 12
19 Mariah Carey, Butterfly 13 14
20 Celine Dion, Because You Loved Me 12 14

COAST 97.3 PD: Tip Landay MD: Sarah Shanley
1 Savage Garden, I Want You 27 23
2 Jewel, You Were Meant For Me 27 24
3 Jon Secada, Too Late To Save 26 26
4 Ouncan Sheik, Barely Breathing 26 26
5 Paul Young, Where Have All The Convoys G 26 26
6 Rod Stewart, I've Fall In Love Tonight 26 26
7 Shawn Colvin, Sunny Came Home 26 26
8 The Cardigans, Loveletter 26 26
9 Elton John, Something About The Way You 24 22
10 Toni Braxton, I Don't Want To 24 22
11 Simple Minds, Don't Speak 11 6
12 No Doubt, Don't Speak 10 13
13 Sheryl Crow, If It Makes You Happy 10 10
14 Celine Dion, It's All Coming Back To Me 10 7
15 Steve Winwood, Roll With It 10 9
16 Pat Benatar, Love Is A Battlefield 10 6
17 John Cougar, Jack & Diane 9 10
18 No Mercy, Where Do You Go 9 6
19 Daryl Hall & John Oates, Maneater 9 8
20 Hanson, Mmmmbop 9 8

Airpower awarded to those records which attain 400 detections for the first time. New airplay lists those stations registering six or more detections per week on a record for the first time. ★ Initial impact: records appearing on this page for the first time.

AIRPLAY **Monitor** MODERN ADULT AIRPLAY

For Week Ending October 26, 1997



POWER PLAYLISTS™

STAR 98.7			MIX 101.9			MIX 98.5		
KYSR Los Angeles PD: Angela Perelli APD/MD: Chris Ebbott			WTMX Chicago VP/Pgmng: Barry James APD/MD: Jaime Kartak			WBMX Boston PD: Greg Strassel MD: Michelle Buczynski		
TW	LW		TW	LW		TW	LW	
1	61	Sugar Ray, Fly	1	46	Rolling Stones, Anybody Seen My Baby	1	49	Paula Cole, I Don't Want To Wait
2	56	Matchbox 20, Push	2	45	Sugar Ray, Fly	2	50	Sister Hazel, All For You
3	56	Chumbawamba, Tubthumping	3	44	Imani Coppola, Legend Of A Cowgirl	3	48	Sugar Ray, Fly
4	52	Jewel, Foolish Games	4	45	Smash Mouth, Walkin On The Sun	4	50	Jewel, Foolish Games
5	52	Tonic, If You Could Only See	5	44	Matchbox 20, 3 Am	5	46	Matchbox 20, Push
6	59	OMC, How Bizarre	6	44	Paula Cole, I Don't Want To Wait	6	46	Third Eye Blind, Semi-Charmed Life
7	49	Sarah McLachlan, Building A Mystery	7	44	Peach Union, On My Own	7	48	Matchbox 20, Push
8	48	The Verve Pipe, The Freshmen	8	40	Chumbawamba, Tubthumping	8	48	Barenaked Ladies, The Old Apartment
9	43	Smash Mouth, Walkin On The Sun	9	31	Blues Traveler, Most Precarious	9	42	Smash Mouth, Walkin On The Sun
10	42	Mighty Mighty Bosstones, The Impression	10	29	Jewel, Foolish Games	10	48	The Wallflowers, The Difference
11	37	Savage Garden, Truly Madly Deeply	11	29	OMC, How Bizarre	11	37	Sarah McLachlan, Sweet Surrender
12	39	Paula Cole, I Don't Want To Wait	12	19	OMC, How Bizarre	12	38	Blues Traveler, Most Precarious
13	35	The Wallflowers, Three Marlenas	13	19	Lisa Loeb, I Do	13	28	Sarah McLachlan, Building A Mystery
14	37	Sister Hazel, All For You	14	15	The Verve Pipe, The Freshmen	14	28	Barenaked Ladies, Brian Wilson
15	26	Fiona Apple, Criminal	15	15	10,000 Maniacs, More Than This	15	26	Lisa Loeb, I Do
16	26	Matchbox 20, 3 Am	16	14	The Smashing Pumpkins, -1979-	16	20	Dave Matthews Band, Crash Into Me
17	21	Ouran Ouran, Electric Barbarella	17	21	Third Eye Blind, Semi-Charmed Life	17	15	Chumbawamba, Tubthumping
18	20	Duncan Sheik, Barely Breathing	18	18	Del Amitri, Roll To Me	18	18	Duncan Sheik, Barely Breathing
19	22	No Doubt, Don't Speak	19	22	The Wallflowers, Son Avenue Heartache	19	18	The Wallflowers, Son Avenue Heartache
20	16	Shawn Colvin, Sunny Came Home	20	16	John Mellencamp, Just Another Day	20	19	Shawn Colvin, Sunny Came Home
21	14	Paula Cole, Where Have All The Cowboys G	21	14	The Wallflowers, The Difference	21	17	Tracy Chapman, Give Me One Reason
22	19	Lisa Loeb, I Do	22	14	Sister Hazel, All For You	22	19	Dave Matthews Band, Ants Marching
23	18	Third Eye Blind, Semi-Charmed Life	23	14	Sundays, Summertime	23	19	Indigo Girls, Shame On You
24	18	The Wallflowers, One Headlight	24	13	Duncan Sheik, Barely Breathing	24	17	Modern English, I Melt With You
25	16	Dave Matthews Band, Crash Into Me	25	13	Blues Traveler, Any Way	25	17	The Cure, Friday's In Love
26	12	Dishwalla, Counting Blue Cars	26	12	The Wallflowers, One Headlight	26	17	The Cure, Just Like Heaven
27	12	Joan Osborne, One Of Us	27	12	Counting Crows, A Long December	27	17	Peter Dinklage, In Your Eyes
28	12	Simple Minds, Don't You	28	11	Gin Blossoms, Allison Road	28	17	Oasis, Don't Go Away
29	9	Seal, Prayer For The Dying	29	11	Tonic, If You Could Only See	29	17	Soft Cell, Tainted Love
30	12	Jewel, You Were Meant For Me	30	12	Sarah McLachlan, Building A Mystery	30	16	The Wallflowers, Three Marlenas

ALICE 97.3			MIX 102.9			PLANET 96.3		
KLLC San Francisco PD: Louis Kaplan MD: Julie Stoeckel			KDMX Dallas PD: Jimmy Steal MD: Lisa Thomas			WPLT Detroit PD: Garrett Michaels MD: Alex Tear		
TW	LW		TW	LW		TW	LW	
1	46	Chumbawamba, Tubthumping	1	60	Third Eye Blind, Semi-Charmed Life	1	50	Sister Hazel, All For You
2	41	Duncan Sheik, She Runs Away	2	61	Third Eye Blind, Semi-Charmed Life	2	50	Barenaked Ladies, Brian Wilson
3	48	Sugar Ray, Fly	3	60	LeAnn Rimes, How Do I Live	3	46	Paula Cole, I Don't Want To Wait
4	40	Tonic, If You Could Only See	4	57	Sugar Ray, Fly	4	44	Sugar Ray, Fly
5	39	Smash Mouth, Walkin On The Sun	5	56	Jewel, Foolish Games	5	44	Smash Mouth, Walkin On The Sun
6	39	Sister Hazel, All For You	6	35	OMC, How Bizarre	6	42	Third Eye Blind, Semi-Charmed Life
7	37	Leah Anderson, Mother Tongue	7	34	The Wallflowers, One Headlight	7	38	Jewel, Foolish Games
8	34	Sundays, Summertime	8	33	Kami Lyte, Poka Poka	8	34	Head To Toe & The Monsters, Please Don't
9	33	Kami Lyte, Poka Poka	9	33	Meredith Brooks, Bitch	9	31	Tonic, If You Could Only See
10	28	Texas, Say What You Want	10	32	Chumbawamba, Tubthumping	10	29	Toad The Wet Sprocket, Crazy Life
11	28	Imani Coppola, Legend Of A Cowgirl	11	31	Tonic, If You Could Only See	11	26	Mighty Mighty Bosstones, The Rascal King
12	28	Oasis, Don't Go Away	12	28	Paula Cole, I Don't Want To Wait	12	29	Sundays, Summertime
13	28	Blues Traveler, Most Precarious	13	28	Amy Grant, Takes A Little Time	13	29	Fiona Apple, Criminal
14	25	Third Eye Blind, Semi-Charmed Life	14	31	Sister Hazel, All For You	14	28	Jan Trnyn, Getaway
15	25	Billie Myers, Kiss The Rain	15	25	Mighty Mighty Bosstones, The Impression	15	28	Chumbawamba, Tubthumping
16	23	Forest For The Trees, Dream	16	28	Blues Traveler, Most Precarious	16	27	Mighty Mighty Bosstones, The Impression
17	23	Mighty Mighty Bosstones, The Impression	17	30	Blessed Union Of Souls, I Wanna Be There	17	26	Sarah McLachlan, Building A Mystery
18	23	Matchbox 20, Push	18	29	Matchbox 20, Push	18	24	Blues Traveler, Most Precarious
19	22	Sarah McLachlan, Building A Mystery	19	28	The Verve Pipe, The Freshmen	19	23	Matchbox 20, Push
20	22	Ouran Ouran, Electric Barbarella	20	29	Sarah McLachlan, Building A Mystery	20	23	Oasis, Don't Go Away
21	22	Paula Cole, I Don't Want To Wait	21	28	Smash Mouth, Walkin On The Sun	21	25	Live, Turn My Head
22	22	Jewel, Foolish Games	22	27	Shawn Colvin, Sunny Came Home	22	28	Shawn Colvin, Sunny Came Home
23	22	Fiona Apple, Criminal	23	26	Counting Crows, A Long December	23	21	The Cure, Wrong Number
24	22	Live, Turn My Head	24	22	Paula Cole, Where Have All The Cowboys G	24	20	The Cure, Wrong Number
25	22	Amy Grant, Takes A Little Time	25	23	Oasis, Don't Go Away	25	20	Dave Matthews Band, Crash Into Me
26	22	Sneaker Pimps, 6 Underground	26	23	The Cardigans, Loveloo	26	20	Indigo Girls, Shame On You
27	20	Indigo Girls, Shame On You	27	23	Better Than Ezra, Normal Town	27	18	Sarah McLachlan, Sweet Surrender
28	19	Luscious Jackson, Naked Eye	28	21	Fiona Apple, Criminal	28	17	OMC, How Bizarre
29	18	Chantal Kreviazuk, Surrounded	29	20	Toad The Wet Sprocket, Crazy Life	29	16	Texas, Say What You Want
30	17	Jai, I Believe	30	17	Jewel, You Were Meant For Me	30	16	Texas, Say What You Want

WBOS			ALICE 104			THE PLANET		
Boston PD: Jim Herron MD: Cliff Nash			WALC St. Louis PD: Bob Davis APD/MD: Tommy Mattern			KKPN Houston PD: Mike Marino MD: Donna McCoy		
TW	LW		TW	LW		TW	LW	
1	46	Paula Cole, I Don't Want To Wait	1	79	Third Eye Blind, Semi-Charmed Life	1	42	Sugar Ray, Fly
2	43	Sister Hazel, All For You	2	67	Sister Hazel, All For You	2	42	Third Eye Blind, Semi-Charmed Life
3	44	Third Eye Blind, Semi-Charmed Life	3	62	Tonic, If You Could Only See	3	42	Sheryl Crow, A Change Would Do You Good
4	43	Sarah McLachlan, Building A Mystery	4	62	Paula Cole, I Don't Want To Wait	4	42	Paula Cole, I Don't Want To Wait
5	43	Blues Traveler, Most Precarious	5	66	Matchbox 20, Push	5	32	The Verve Pipe, The Freshmen
6	42	Tonic, If You Could Only See	6	64	Paula Cole, I Don't Want To Wait	6	32	Sister Hazel, All For You
7	40	Rolling Stones, Anybody Seen My Baby	7	79	Jewel, Foolish Games	7	32	Matchbox 20, Push
8	26	Jan Trnyn, Getaway	8	56	The Verve Pipe, The Freshmen	8	31	The Wallflowers, The Difference
9	25	Texas, Say What You Want	9	48	Smash Mouth, Walkin On The Sun	9	26	Sarah McLachlan, Building A Mystery
10	23	Sundays, Summertime	10	46	Chumbawamba, Tubthumping	10	30	The Wallflowers, The Difference
11	23	Collective Soul, Blames	11	47	Imani Coppola, Legend Of A Cowgirl	11	31	Duncan Sheik, Barely Breathing
12	22	Freddy Jones Band, Wonder	12	43	Mighty Mighty Bosstones, The Impression	12	31	OMC, How Bizarre
13	22	The Verve Pipe, The Freshmen	13	42	The Wallflowers, One Headlight	13	30	Jewel, Foolish Games
14	22	The Wallflowers, Three Marlenas	14	42	Fiona Apple, Criminal	14	31	Tonic, If You Could Only See
15	19	Counting Crows, A Long December	15	41	OMC, How Bizarre	15	28	Counting Crows, Daylight Fading
16	18	Hootie & The Blowfish, Only Wanna Be Wit	16	36	Better Than Ezra, Desperately Wanting	16	9	Fiona Apple, Criminal
17	17	Hootie & The Blowfish, Time	17	35	Dishwalla, Counting Blue Cars	17	28	Dave Matthews Band, Crash Into Me
18	17	The Wallflowers, One Headlight	18	34	Imani Coppola, Legend Of A Cowgirl	18	25	Amanda Marshall, Fall From Grace
19	17	No Doubt, Don't Speak	19	32	Savage Garden, I Want You	19	24	10,000 Maniacs, More Than This
20	16	Sneaker Pimps, 6 Underground	20	31	The Cardigans, Loveloo	20	24	INXS, Elegantly Wasted
21	16	Bruce Springsteen, Secret Garden	21	31	Forest For The Trees, Dream	21	24	Shawn Colvin, Sunny Came Home
22	16	Dave Matthews Band, Crash Into Me	22	30	Sarah McLachlan, Building A Mystery	22	23	Smash Mouth, Walkin On The Sun
23	16	Alanis Morissette, Ironic	23	28	Sheryl Crow, A Change Would Do You Good	23	16	Meredith Brooks, Bitch
24	15	Shawn Colvin, You And The Mona Lisa	24	28	Jewel, You Were Meant For Me	24	16	Savage Garden, I Want You
25	15	Matthew Ryan, Gully	25	26	Shawn Colvin, Sunny Came Home	25	16	Joan Osborne, One Of Us
26	15	Alanis Morissette, You Learn	26	25	Imani Coppola, Legend Of A Cowgirl	26	14	Sarah McLachlan, Possession
27	13	Alanis Morissette, You Oughta Know	27	23	Paula Cole, Where Have All The Cowboys G	27	14	Eric Clapton, Change The World
28	13	Sheryl Crow, Home	28	21	Lisa Loeb, I Do	28	14	Jann Arden, Inesistive
29	13	Oasis, Don't Go Away	29	19	311, All Mazed Up	29	14	Jewel, You Were Meant For Me
30	13	Behan Johnson, World Keeps Spinning	30	19	Oasis, Don't Go Away	30	13	Better Than Ezra, Good

STAR 100.7			96.5 TIC			THE ZONE		
KFMB San Diego OM/MD: Tracy Johnson MD: Greg Simms			WTIC Hartford OM: Steve Salhany MD: David Simpson			KZZO Sacramento PD: Carmy Ferreri MD: Dave Daniels		
TW	LW		TW	LW		TW	LW	
1	79	Smash Mouth, Walkin On The Sun	1	47	Paula Cole, I Don't Want To Wait	1	54	Sugar Ray, Fly
2	76	Sugar Ray, Fly	2	47	Sugar Ray, Fly	2	57	Sister Hazel, All For You
3	65	Chumbawamba, Tubthumping	3	46	LeAnn Rimes, How Do I Live	3	58	Smash Mouth, Walkin On The Sun
4	62	Sarah McLachlan, Building A Mystery	4	41	OMC, How Bizarre	4	53	Paula Cole, I Don't Want To Wait
5	50	Paula Cole, I Don't Want To Wait	5	49	Duncan Sheik, Barely Breathing	5	54	Matchbox 20, Push
6	49	Matchbox 20, 3 Am	6	48	Sister Hazel, All For You	6	52	Jewel, Foolish Games
7	48	Imani Coppola, Legend Of A Cowgirl	7	40	Third Eye Blind, Semi-Charmed Life	7	49	Third Eye Blind, Semi-Charmed Life
8	47	Matchbox 20, Push	8	35	Jewel, Foolish Games	8	48	Fiona Apple, Criminal
9	47	Third Eye Blind, Semi-Charmed Life	9	35	Matchbox 20, Push	9	47	Shawn Colvin, Sunny Came Home
10	38	Jewel, Foolish Games	10	35	Tonic, If You Could Only See	10	47	Blues Traveler, Most Precarious
11	37	Mighty Mighty Bosstones, The Impression	11	34	Sarah McLachlan, Building A Mystery	11	46	The Verve Pipe, The Freshmen
12	36	Dave Matthews Band, Crash Into Me	12	32	Lisa Loeb, I Do	12	45	OMC, How Bizarre
13	35	Sister Hazel, All For You	13	32	Amy Grant, Takes A Little Time	13	44	Tonic, If You Could Only See
14	35	Sundays, Summertime	14	31	Smash Mouth, Walkin On The Sun	14	39	Chumbawamba, Tubthumping
15	34	Lisa Loeb, I Do	15	29	Chumbawamba, Tubthumping	15	36	Chantal Kreviazuk, Surrounded
16	33	Forest For The Trees, Dream	16	28	Matchbox 20, Push	16	36	Chantal Kreviazuk, Surrounded
17	32	Kami Lyte, Poka Poka	17	28	Shawn Colvin, You And The Mona Lisa	17	35	Texas, Say What You Want
18	32	Space Monkeys, Sugar Cane	18	25	Tori Amos, Silent All These Years	18	33	Jewel, You Were Meant For Me
19	31	Toad The Wet Sprocket, Crazy Life	19	24	Mighty Mighty Bosstones, The Impression	19	32	Third Eye Blind, How's It Going To Be
20	31	Alana Davis, 32 Flavours	20	24	Blessed Union Of Souls, I Wanna Be There	20	31	Meredith Brooks, Bitch
21	31	Rolling Stones, Anybody Seen My Baby	21	24	The Wallflowers, One Headlight	21	29	Holly Mcnairland, Numb
22	31	The Wallflowers, The Difference	22	24	Shawn Colvin, Sunny Came Home	22	29	Lisa Loeb, I Do
23	12	Billie Myers, Kiss The Rain	23	21	Blues Traveler, Hook	23	18	OMC, How Bizarre
24	12	OMC, How Bizarre	24	19	Hootie & The Blowfish, Tucker's Town	24	18	Fiona Apple, Criminal
25	10	No Doubt, Spiderwebs	25	18	Everything But The Girl, Missing	25	17	Sundays, Summertime
26	10	The Wallflowers, One Headlight	26	16	Jewel, Who Will Save Your Soul	26	18	Duncan Sheik, Barely Breathing
27	9	Savage Garden, I Want You	27	15	John Mellencamp, Key West Intermezzo	27	18	Shawn Colvin, Sunny Came Home
28	9	Meredith Brooks, Bitch	28	15	Live, Turn My Head	28	18	Pistoleros, My Guardian Angel
29	9	Sublime, What I Got	29	15	Oasis, Don't Go Away	29	18	Duran Duran, Electric Barbarella
30	8	Naked Eyes, Always Something There To Re	30	15	No Doubt, Don't Speak	30	17	Sublime, Santena

THIS WEEK	LAST WEEK	WKS. ON CHART	TITLE/LABEL/PROMOTION LABEL	ARTIST	TW	LW	DETECTIONS
1	1	14	FLY LAVA/ATLANTIC	SUGAR RAY	1670	1675	4 weeks at No. 1
2	2	10	WALKIN' ON THE SUN INTERSCOPE	SMASH MOUTH	1520	1536	
3	3	15	I DON'T WANT TO WAIT IMAGO/WARNER BROS.	PAULA COLE	1475	1498	
4	4	22	IF YOU COULD ONLY SEE POLYDOR/A&M	TONIC	1408	1402	
5	10	7	TUBTHUMPING REPUBLIC/UNIVERSAL	CHUMBAWAMBA	1374	1217	
6	5	28	ALL FOR YOU UNIVERSAL	SISTER HAZEL	1354	1376	
7	6	18	BUILDING A MYSTERY NETTWERK/ARISTA	SARAH MCLACHLAN	1223	1283	
8	8	27	SEMI-CHARMED LIFE ELEKTRA/EEG	THIRD EYE BLIND	1216	1216	
9	9	22	PUSH LAVA/ATLANTIC	MATCHBOX 20	1166	1208	
10	7	16	FOOLISH GAMES ATLANTIC	JEWEL	1141	1241	
11	11	13	CRIMINAL CLEAN SLATE/WORK	FIONA APPLE	1001	1024	
12	12	26	HOW BIZARRE HUH/MERCURY	OMC	870	948	
13	15	7	SUMMERTIME DGC/GEFFEN	THE SUNDAYS	836	751	
14	13	18	THE IMPRESSION THAT I GET BIG RIG/MERCURY	THE MIGHTY MIGHTY BOSSTONES	835	854	
15	14	6	DON'T GO AWAY EPIC	OASIS	796	756	
16	17	54	BARELY BREATHING ATLANTIC	DUNCAN SHEIK	696	684	
17</							

POWER PLAYLISTS™

WXRK New York PD: Steve Kingston MD: Mike Peer

Table with 3 columns: Rank, Title/Label/Promotion Label, Artist. Top entry: 1 Foo Fighters, Everlong.

KROQ Los Angeles VP Prgm.: Kevin Weatherly APD: Gene Sandblom

Table with 3 columns: Rank, Title/Label/Promotion Label, Artist. Top entry: 1 Chumbawamba, Tubthumping.

WKQX Chicago PD: Alex Luke MD: Mary Shuminas

Table with 3 columns: Rank, Title/Label/Promotion Label, Artist. Top entry: 1 Everclear, Everything To Everyone.

The chart and Power Playlists, reprinted from Rock Airplay Monitor, are based on a national sample of data compiled by Broadcast Data Systems' Radio Track service.

Main chart table with 10 columns: This Week, Last Week, Wks. On Chart, Title/Label/Promotion Label, Artist, TW, LW. Top entry: 1 Tubthumping, Chumbawamba.

Records showing an increase in detections over the previous week, regardless of chart movement. A record which has been on the chart for more than 20 weeks will not receive a bullet, even if it registers an increase in detections.

WBCN Boston VP/Prgm: Oedipus MD: Carter Alan

Table with 3 columns: Rank, Title/Label/Promotion Label, Artist. Top entry: 1 Smash Mouth, Walkin On The Sun.

WPLY Philadelphia PD: Jim McGuinn APD: Doug Kubinski

Table with 3 columns: Rank, Title/Label/Promotion Label, Artist. Top entry: 1 Chumbawamba, Tubthumping.

KLYY Los Angeles VP Prgm: Steve Blatter APD: Sandy Horowitz

Table with 3 columns: Rank, Title/Label/Promotion Label, Artist. Top entry: 1 Sundays, Summertime.

WHFS Washington, DC PD: Robert Benjamin APD: Bob Waugh

Table with 3 columns: Rank, Title/Label/Promotion Label, Artist. Top entry: 1 Chumbawamba, Tubthumping.

WNNX Atlanta OM: Brian Phillips PD: Leslie Fiam

Table with 3 columns: Rank, Title/Label/Promotion Label, Artist. Top entry: 1 Ben Folds Five, Britt.

KDGE Dallas PD: Joel Folger MD: Mike Peer

Table with 3 columns: Rank, Title/Label/Promotion Label, Artist. Top entry: 1 Prodigy, Breathe.

KITS San Francisco VP/Prgm.: Richard Sands APD: Roland West

Table with 3 columns: Rank, Title/Label/Promotion Label, Artist. Top entry: 1 Verve, Bitter Sweet Symphony.

KEGE Minneapolis PD: Wade Linder APD/MD: Bill Jones

Table with 3 columns: Rank, Title/Label/Promotion Label, Artist. Top entry: 1 Days Of The New, Touch, Peel And Stand.

KNDD Seattle PD: Phil Manning MD: Kim Monroe

Table with 3 columns: Rank, Title/Label/Promotion Label, Artist. Top entry: 1 Chumbawamba, Tubthumping.

KOME San Jose PD: Jay Taylor

Table with 3 columns: Rank, Title/Label/Promotion Label, Artist. Top entry: 1 Foo Fighters, Everlong.

KTBS Houston PD: Jim Trapp MD: David Sadoff

Table with 3 columns: Rank, Title/Label/Promotion Label, Artist. Top entry: 1 Oasis, Don't Go Away.

CIMX Detroit Prgm. Mngt.: Murray Brookshaw PD/MD: Vince Cannova

Table with 3 columns: Rank, Title/Label/Promotion Label, Artist. Top entry: 1 Chumbawamba, Tubthumping.

KPNT St. Louis PD: Allan Fee MD: Adam Potts

Table with 3 columns: Rank, Title/Label/Promotion Label, Artist. Top entry: 1 Our Lady Peace, Superman's Dead.

WXDX Pittsburgh PD: Ali Castellini MD: Lenny Diana

Table with 3 columns: Rank, Title/Label/Promotion Label, Artist. Top entry: 1 Chumbawamba, Tubthumping.

KEDJ Phoenix PD: Shellie Hart APD/MD: Chris Patyk

Table with 3 columns: Rank, Title/Label/Promotion Label, Artist. Top entry: 1 Everclear, Everything To Everyone.

COMBINED TOP 40 AUDIENCE										AIRPLAY BY FORMAT															
TW	LW	WKS	TITLE (LABEL/PROMOTION LABEL)	ARTIST	THIS WEEK			LAST WEEK			MAINSTREAM		RHYTHMIC TOP 40		ADULT TOP 40		AC		MODERN						
					Audience (millions)	Detections No.	Rank	Audience (millions)	Detections No.	Rank	Audience (millions)	Detections No.	Rank	Audience (millions)	Detections No.	Rank	Audience (millions)	Detections No.	Rank	Audience (millions)	Detections No.	Rank			
1	1	15	FLY (LAVA/ATLANTIC)	SUGAR RAY	90.8306	9674	1	91.2476	9731	1	46.9426	5119	1	8.8391	735	12	22.3748	1986	4	0.1172	55	—	12.5569	1779	8
2	2	14	FOOLISH GAMES (ATLANTIC)	JEWEL	76.7692	7777	3	80.3282	8251	2	39.8301	4195	2	4.9891	371	30	24.9727	2312	3	5.9884	757	8	0.9889	142	—
3	4	6	TUBTHUMPING (REPUBLIC/UNIVERSAL)	CHUMBAWAMBA	72.2891	8569	2	62.8239	7456	3	36.3352	4189	3	0.6303	48	—	15.1451	1463	12	0.0181	5	—	20.1604	2864	1
4	3	11	HOW DO I LIVE (CURB)	LEANN RIMES	70.0407	6943	5	68.6304	6746	5	36.6522	3867	5	2.2633	266	—	16.6467	1487	10	14.4784	1322	1	0.0001	1	—
5	6	27	SEMI-CHARMED LIFE (ELEKTRA/JEG)	THIRD EYE BLIND	59.3174	6247	7	60.1937	6388	7	30.5224	3239	7	0.5819	41	—	20.7735	1934	5	0.5084	100	—	6.9312	933	—
6	5	19	PUSH (LAVA/ATLANTIC)	MATCHBOX 20	58.7869	6727	6	60.6581	6971	4	33.0829	4015	4	0.0309	4	—	18.8641	1760	7	0.0433	19	—	6.7657	929	—
7	7	23	QUIT PLAYING GAMES (WITH MY HEART) (JIVE)	BACKSTREET BOYS	53.7802	5435	10	53.6846	5716	10	24.1765	2887	8	8.4245	504	21	9.1312	884	19	12.0480	1160	3	—	—	—
8	9	11	WALKIN' ON THE SUN (INTERSCOPE)	SMASH MOUTH	52.6852	6982	4	48.5980	6634	6	19.1001	2776	10	0.0337	7	—	14.7319	1501	9	0.0484	20	—	18.7711	2678	2
9	8	24	ALL FOR YOU (UNIVERSAL)	SISTER HAZEL	49.3630	5638	9	50.2759	5788	9	19.2203	2408	13	0.0546	8	—	25.3228	2370	2	1.9998	413	21	2.7655	439	—
10	10	12	I DON'T WANT TO WAIT (IMAGO/WARNER BROS.)	PAULA COLE	48.5925	5777	8	48.1307	5789	8	19.7019	2636	11	0.0873	19	—	24.9470	2398	1	2.3298	442	16	1.5265	282	—
11	13	20	IF YOU COULD ONLY SEE (POLYDOR/A&M)	TONIC	42.1879	5089	12	41.4063	4985	12	19.5218	2486	12	0.0244	4	—	15.9742	1622	8	0.0727	33	—	6.5948	944	—
12	14	8	4 SEASONS OF LONELINESS (MOTOWN)	BOYZ II MEN	41.1928	4284	13	39.9726	4217	13	25.0520	2836	9	14.7423	1162	4	0.5943	142	—	0.7806	141	30	0.0236	3	—
13	11	16	BUILDING A MYSTERY (NETWERK/ARISTA)	SARAH MCLACHLAN	41.1861	5138	11	44.9505	5430	11	15.1051	2143	15	0.4858	61	—	18.3314	1801	6	0.7372	162	28	6.5266	971	22
14	16	7	ALL CRIED OUT (TRACK MASTERS/CRAVE)	ALLURE FEATURING 112	39.9971	3667	18	36.7603	3300	19	21.2176	2283	14	18.0042	1239	3	0.4292	116	—	0.3147	26	—	0.0314	3	—
15	15	25	HOW BIZARRE (HUH/MERCURY)	OMC	36.5574	4046	15	38.4943	4177	15	15.8675	1951	18	3.4401	337	34	15.4470	1473	11	0.1712	61	—	1.6316	224	—
16	12	16	2 BECOME 1 (VIRGIN)	SPICE GIRLS	36.3683	3437	20	42.2840	4042	16	17.0677	1789	20	7.5099	565	17	2.9576	358	35	8.8331	725	10	—	—	—
17	20	4	YOU MAKE ME WANNA... (LAFACE/ARISTA)	USHER	35.2136	3433	21	31.9845	2980	25	10.7644	1480	26	24.3923	1935	1	0.0074	14	—	—	—	—	0.0495	4	—
18	18	32	SUNNY CAME HOME (COLUMBIA)	SHAWN COLVIN	34.0002	3112	24	33.9447	3195	23	12.5081	1165	—	0.2221	6	—	12.8463	1215	14	7.3286	571	12	1.0951	155	—
19	19	17	NO MONEY NO PROBLEMS (BAD BOY/ARISTA)	THE NOTORIOUS B.I.G. (FEAT. PUFF DADDY & MASE)	32.3324	2440	33	32.1912	2325	36	16.3153	1420	28	16.0073	1019	5	—	—	—	—	—	—	0.0098	1	—
20	17	22	I'LL BE MISSING YOU (BAD BOY/ARISTA)	PUFF DADDY & FAITH EVANS (FEAT. 112)	31.7187	2521	30	34.3012	2640	29	17.6980	1776	22	14.0195	744	11	0.0012	1	—	—	—	—	—	—	—
21	23	4	BUTTERFLY (COLUMBIA)	MARIAH CAREY	31.5982	3685	17	28.8824	3199	22	14.9530	2020	17	8.1104	719	13	2.9225	344	36	5.6123	602	11	—	—	—
22	22	5	SHOW ME LOVE (RCA)	ROBYN	31.0898	3995	16	29.6597	3783	17	25.2473	3279	6	4.6834	513	20	1.1187	192	—	0.0403	10	—	0.0001	1	—
23	24	9	CRIMINAL (CLEAN SLATE/WORK)	FIONA APPLE	28.3053	4271	14	27.6558	4201	14	9.7998	1551	25	0.0267	5	—	7.1550	903	18	0.0443	2	—	11.2795	1810	7
24	27	7	TAKES A LITTLE TIME (A&M)	AMY GRANT	28.0148	3323	23	27.1458	3170	24	9.0436	1313	30	0.0224	4	—	9.5023	997	16	9.4465	1009	4	—	—	—
25	21	19	MEN IN BLACK (COLUMBIA)	WILL SMITH	27.9174	2891	25	31.9599	3270	20	16.3209	2028	16	11.4422	810	8	0.1532	52	—	0.0011	1	—	—	—	—
26	28	41	BARELY BREATHING (ATLANTIC)	DUNCAN SHEIK	26.7327	2743	28	26.9729	2745	28	8.3907	916	—	—	—	—	15.3613	1379	13	19794	288	—	1.0013	160	—
27	29	4	SOMETHING ABOUT THE WAY YOU LOOK TONIGHT (ROCKET/A&M)	ELTON JOHN	26.2685	2819	27	24.3382	2594	32	4.7179	808	—	0.0258	6	—	7.5799	717	24	13.9449	1288	2	—	—	—
28	26	39	ONE HEADLIGHT (INTERSCOPE)	THE WALLFLOWERS	26.2368	2865	26	27.1988	2977	26	9.3573	1147	—	—	—	—	12.8366	1157	15	0.7094	126	—	3.3335	435	—
29	25	23	THE IMPRESSION THAT I GET (BIG RIG/MERCURY)	THE MIGHTY MIGHTY BOSSTONES	24.5074	3364	22	27.4462	3716	18	10.3316	1634	23	0.0479	8	—	6.7507	788	21	0.0008	1	—	7.3764	933	—
30	32	8	LOVE YOU DOWN (SO SO DEF/COLUMBIA)	INOJ	23.4165	2011	45	23.4078	2020	45	11.9568	1205	34	11.4496	801	9	0.0036	2	—	0.0065	3	—	—	—	—
31	31	32	THE FRESHMEN (RCA)	THE VERVE PIPE	22.2795	2373	35	24.0753	2635	30	7.6785	932	—	—	—	—	11.8072	934	17	0.0423	12	—	2.7515	495	—
32	30	14	INVISIBLE MAN (MOTOWN)	98 DEGREES	22.0563	2483	31	24.1996	2832	27	17.8885	1850	19	2.9893	341	33	0.5227	153	—	0.6558	139	—	—	—	—
33	37	46	YOU WERE MEANT FOR ME (ATLANTIC)	JEWEL	21.1754	2054	41	19.8688	1967	47	6.1666	606	—	0.4465	57	—	8.6171	804	—	5.3266	466	15	0.6186	121	—
34	36	4	DON'T GO AWAY (EPIC)	OASIS	20.8153	3474	19	19.9653	3237	21	3.0093	784	—	—	—	—	3.4452	565	29	—	—	—	14.3608	2125	5
35	33	33	CRASH INTO ME (RCA)	DAVE MATTHEWS BAND	20.7897	2236	37	22.0071	2414	35	8.1263	826	40	—	—	—	8.6750	872	20	0.0293	15	—	3.9591	523	—
36	35	25	DO YOU KNOW (WHAT IT TAKES) (RCA)	ROBYN	20.7525	2050	42	21.6454	2163	41	15.9189	1598	24	3.6921	300	39	1.1076	141	—	0.0339	11	—	—	—	—
37	34	13	HONEY (COLUMBIA)	MARIAH CAREY	19.8074	2189	38	21.7629	2471	33	10.2528	1118	36	9.1816	977	6	0.3404	86	—	0.0120	6	—	0.0206	2	—
38	40	53	DON'T SPEAK (TRAUMA/INTERSCOPE)	NO DOUBT	18.8539	1936	47	18.9797	2004	46	6.5061	759	—	0.6873	84	—	8.7309	758	—	8.7309	758	—	0.6466	130	—
39	NEW		EVERLONG (ROSWELL/CAPITOL)	FOO FIGHTERS	17.8762	2443	32	17.6243	2421	34	0.0214	5	—	—	—	—	—	—	—	—	—	—	17.8548	2438	3
40	39	2	LEGEND OF A COWGIRL (COLUMBIA)	IMANI COPPOLA	17.8418	2611	29	19.2475	2605	31	11.5230	1783	21	0.3408	18	—	5.4617	640	26	0.0064	4	—	0.5099	166	—

Records showing an increase in audience over the previous week, regardless of chart movement. Rankings by format (on right side of this page) correspond to 40-position charts printed in this week's Monitor (30 positions for adult contemporary); therefore rankings do not exist for recurrences and records below No. 40 (No. 30 for adult contemporary). Audience computed by cross-referencing exact times of airplay with Arbitron listener data. ©1997, Billboard/BPI Communications.



KAMI LYLE

"Polka Dots"

From Her Debut Album Blue Cinderella

Produced by Hugh Padgham

"I've seen Kami perform live on stage and live on the air. I've seen the requests for 'Polka Dots.' I've seen enough...I'm convinced that Kami Lyle is an artist with a future. If you don't believe MCA, call me!!"

-Tracy Johnson-Star 100, San Diego

- STAR 100 38x
- KLLC 33x
- WQSM 20x
- KALC 14x
- KKPN 14x
- WMTX 15x
- WQAL 12x
- KMXG 10x
- WWWM 14x
- KKMY 15x
- KLLY 15x
- KOSO 20x
- WAKS ADD



"THIS IS THE BEST ROLLING STONES RECORD SINCE 'START ME UP' AND 'MISS YOU'. THEY ARE ON THEIR WAY TO SUCCESSFULLY REMARKETING THEMSELVES TO BE HIP AND CONTEMPORARY WITH A GREAT NEW SONG."

-TRACY JOHNSON, PD KFMB SAN DIEGO

KIIS ADD
 KDWB ADD
 KLLS ADD

— THE —
 ROLLING
 STONES

ANYBODY · SEEN · MY · BABY

"THE MORE I LISTEN THE BETTER IT GETS.
 PERSONALLY I THINK THIS SOUNDS VERY POP."
 -KEN BENSON, PD KKRZ PORTLAND

"THE MORE WE PLAY IT, THE MORE PEOPLE LIKE IT.
 THIS IS MORE POP THAN A LOT OF PEOPLE BELIEVE."
 -NEIL SHARPE, APD/MD WNCI COLUMBUS

DEBUT SOUNDSCAN #3
 160,000 COPIES SOLD IN 1ST WEEK!
 #1 AT ROCK RADIO

AIRPLAY HIGHLIGHTS:

WBMX	WABB	WKDD
KKRZ	WQAL	KWTX
KYKY	KKRD	WYCR
WTMX	WDJX	KHTQ
WXKS	Z104	KJ103
WNCI	WRHT	WTIC
WRVW	WNNK	WKSS
KFMB	WSTW	WKRZ
WZOK	WNTQ	WVRV
KBFM	WERZ	

PLAYING THE ROLLING STONES IS AN EVENT.

The new single from the album
 Bridges To Babylon

Produced by Don Was, The Dust Brothers and The Glimmer Twins

Executive Producers: Don Was and The Glimmer Twins

©1997 Parlophone B.V. (a division of) and its affiliate Virgin Records America, Inc.
 Rolling Stones and Tongue and Lip Design are trademarks of Mercury B.V. www.the-rolling-stones.com

1
 VH
 MUSIC FIRST
 LARGE!
 36 SPINS

M
 TV
 MUSIC TELEVISION
 HEAVY
 26 SPINS

THIS WEEK	LAST WEEK	WKS. ON CHART	MAINSTREAM		DETECTIONS		
			TITLE/LABEL/PROMOTION LABEL	ARTIST	TW	LW	
			★★★★ NO. 1 ★★★★★				
1	1	11	FLY LAVA/ATLANTIC	SUGAR RAY	5119	5067	
	2	15	FOOLISH GAMES ATLANTIC	JEWEL	4195	4436	
3	5	5	TUBTHUMPING REPUBLIC/UNIVERSAL	CHUMBAWAMBA	4189	3431	
4	3	17	PUSH LAVA/ATLANTIC	MATCHBOX 20	4015	4098	
5	4	13	HOW DO I LIVE CURB	LEANN RIMES	3867	3749	
6	8	7	SHOW ME LOVE RCA	ROBYN	3279	3080	
7	6	25	SEMI-CHARMED LIFE ELEKTRA/VEEG	THIRD EYE BLIND	3239	3397	
8	7	23	QUIT PLAYING GAMES (WITH MY HEART) JIVE	BACKSTREET BOYS	2887	3190	
9	9	9	4 SEASONS OF LONELINESS MOTOWN	BOYZ II MEN	2836	2739	
10	12	6	WALKIN' ON THE SUN INTERSCOPE	SMASH MOUTH	2776	2373	
11	10	14	I DON'T WANT TO WAIT IMAGO/WARNER BROS.	PAULA COLE	2636	2695	
12	13	15	IF YOU COULD ONLY SEE POLYDOR/A&M	TONIC	2486	2372	
13	11	27	ALL FOR YOU UNIVERSAL	SISTER HAZEL	2408	2512	
14	18	10	ALL CRIED OUT TRACK MASTERS/CRAVE	ALLURE FEATURING 112	2283	2025	
15	15	12	BUILDING A MYSTERY NETTWERK/ARISTA	SARAH MCLACHLAN	2143	2172	
16	14	20	MEN IN BLACK COLUMBIA	WILL SMITH	2028	2266	
17	24	4	BUTTERFLY COLUMBIA	MARIAH CAREY	2020	1677	
18	19	31	HOW BIZARRE HUH!/MERCURY	OMC	1951	1998	
19	17	16	INVISIBLE MAN MOTOWN	98 DEGREES	1850	2090	
20	16	18	2 BECOME 1 VIRGIN	SPICE GIRLS	1789	2163	
21	21	8	LEGEND OF A COWGIRL COLUMBIA	IMANI COPPOLA	1783	1823	
22	22	19	I'LL BE MISSING YOU BAD BOY/ARISTA	PUFF DADDY & FAITH EVANS (FEATURING 112)	1776	1805	
23	20	13	THE IMPRESSION THAT I GET BIG RIG/MERCURY	THE MIGHTY MIGHTY BOSSTONES	1634	1960	
24	23	26	DO YOU KNOW (WHAT IT TAKES) RCA	ROBYN	1598	1742	
			★★★★ AIRPOWER ★★★★★				
25	28	4	CRIMINAL CLEAN SLATE/WORK	FIONA APPLE	1551	1435	
26	35	3	YOU MAKE ME WANNA... LAFACE/ARISTA	USHER	1480	1060	
27	31	4	I WILL COME TO YOU MERCURY	HANSON	1470	1277	
28	30	6	MO MONEY MO PROBLEMS BAD BOY/ARISTA	THE NOTORIOUS B.I.G. (FEAT. PUFF DADDY & MASE)	1420	1292	
29	27	26	BITCH CAPITOL	MEREDITH BROOKS	1346	1441	
30	32	10	TAKES A LITTLE TIME A&M	AMY GRANT	1313	1248	
31	33	4	ELECTRIC BARBARELLA CAPITOL	DURAN DURAN	1301	1192	
32	36	3	BREAKING ALL THE RULES GEFLEN	SHE MOVES	1248	982	
33	NEW		AS LONG AS YOU LOVE ME JIVE	BACKSTREET BOYS	1213	653	
34	34	5	LOVE YOU DOWN SO SO DEF/COLUMBIA	INOJ	1205	1185	
35	25	10	ON MY OWN MUTE/EPIC	PEACH UNION	1179	1520	
36	29	13	HONEY COLUMBIA	MARIAH CAREY	1118	1321	
37	26	9	TOO GONE, TOO LONG EASTWEST/VEEG	EN VOGUE	1111	1446	
38	NEW		I DO GEFLEN	LISA LOEB	978	569	
39	NEW		TRULY MADLY DEEPLY COLUMBIA	SAVAGE GARDEN	868	545	
40	37	20	CRASH INTO ME RCA	DAVE MATTHEWS BAND	826	918	

THIS WEEK	LAST WEEK	WKS. ON CHART	RHYTHMIC TOP 40		DETECTIONS		
			TITLE/LABEL/PROMOTION LABEL	ARTIST	TW	LW	
			★★★★ NO. 1 ★★★★★				
1	1	10	YOU MAKE ME WANNA... LAFACE/ARISTA	USHER	1935	1913	
2	2	7	MY LOVE IS THE SHHH! WARNER BROS.	SOMETHIN' FOR THE PEOPLE FEATURING TRINA & TAMARA	1442	1315	
3	4	11	ALL CRIED OUT TRACK MASTERS/CRAVE	ALLURE FEATURING 112	1239	1150	
4	3	10	4 SEASONS OF LONELINESS MOTOWN	BOYZ II MEN	1162	1225	
5	6	25	MO MONEY MO PROBLEMS BAD BOY/ARISTA	THE NOTORIOUS B.I.G. (FEAT. PUFF DADDY & MASE)	1019	1032	
6	5	13	HONEY COLUMBIA	MARIAH CAREY	977	1058	
7	7	13	HEAVEN REPRISE	NU FLAVOR	919	955	
8	8	21	MEN IN BLACK COLUMBIA	WILL SMITH	810	938	
9	10	16	LOVE YOU DOWN SO SO DEF/COLUMBIA	INOJ	801	829	
10	11	8	THE ONE I GAVE MY HEART TO BLACKGROUND/ATLANTIC	AALIYAH	795	770	
11	9	24	I'LL BE MISSING YOU BAD BOY/ARISTA	PUFF DADDY & FAITH EVANS (FEATURING 112)	744	834	
12	13	6	FLY LAVA/ATLANTIC	SUGAR RAY	735	713	
13	15	6	BUTTERFLY COLUMBIA	MARIAH CAREY	719	669	
14	12	14	EVERYTHING MCA	MARY J. BLIGE	717	746	
15	17	5	PHENOMENON OEF JAM/MERCURY	LL COOL J	663	579	
16	18	6	PUT YOUR HANDS WHERE MY EYES COULD SEE ELEKTRA/VEEG	BUSTA RHYMES	623	575	
17	14	16	2 BECOME 1 VIRGIN	SPICE GIRLS	565	704	
			★★★★ AIRPOWER ★★★★★				
18	22	3	TOGETHER AGAIN VIRGIN	JANET	556	455	
19	16	9	GOT 'TIL IT'S GONE VIRGIN	JANET (FEATURING Q-TIP AND JONI MITCHELL)	534	635	
20	20	7	SHOW ME LOVE RCA	ROBYN	513	511	
21	19	23	QUIT PLAYING GAMES (WITH MY HEART) JIVE	BACKSTREET BOYS	504	514	
22	21	5	R U READY RED ANT/LONDON/ISLAND	SALT-N-PEPA	464	480	
23	23	7	FEEL SO GOOD BAD BOY/ARISTA	MASE	443	441	
24	26	3	BACKYARD BOOGIE PRIORITY	MACK 10	437	414	
25	33	2	MY BODY EASTWEST/VEEG	LSG	432	349	
26	27	4	IF I COULD TEACH THE WORLD RUTHLESS/RELATIVITY	BONE THUGS-N-HARMONY	431	390	
27	24	24	G.H.E.T.T.O.U.T. BIG BEAT/ATLANTIC	CHANGING FACES	413	430	
28	36	2	SOCK IT 2 ME EASTWEST/VEEG	MISSY "MISDEMEANOR" ELLIOTT FEATURING DA BRAT	388	335	
29	32	4	NO TENGO DINERO FLEX/EMI/VIRGIN	LOS UMBRELLOS	382	352	
30	34	4	FOOLISH GAMES ATLANTIC	JEWEL	371	347	
31	38	2	SPICE UP YOUR LIFE VIRGIN	SPICE GIRLS	367	302	
32	30	18	NOT TONIGHT UNDEASATLANTIC/TOMMY BOY	LIL' KIM FEAT. DA BRAT, LEFT EYE, MISSY ELLIOTT & ANGIE MARTINEZ	346	359	
33	25	18	INVISIBLE MAN MOTOWN	98 DEGREES	341	427	
34	29	12	HOW BIZARRE HUH!/MERCURY	OMC	337	367	
35	NEW		WHAT ABOUT US ARISTA	TOTAL	334	292	
36	28	11	BARBIE GIRL MCA	AQUA	319	374	
37	NEW		AS LONG AS YOU LOVE ME JIVE	BACKSTREET BOYS	318	224	
38	37	15	BIG BAD MAMMA VIOLATOR/OEF JAM/MERCURY	FOXY BROWN FEATURING DRU HILL	309	326	
39	RE-ENTRY		DO YOU KNOW (WHAT IT TAKES) RCA	ROBYN	300	264	
40	NEW		BUTTA LOVE ARISTA	NEXT	300	254	

Records showing an increase in detections over the previous week, regardless of chart movement. A record which has been on either chart for more than 20 weeks will not receive a bullet, even if it registers an increase in detections. Airpower awarded to those records which attain 1500 detections (mainstream) or 500 detections (rhythm) for the first time. If two records are tied in number of plays, the record being played on more stations is placed first. Records below the top 20 are removed from the chart after 26 weeks.

"I WANNA BE A WITCH"

the bewitching first single
from the debut album MOON HUT

starring

KIM FOX

fall under the spell

SPINNING AT:
KLIC/SAN FRANCISCO
WMTX/TAMPA
WFLZ/TAMPA
WGTZ/DAYTON
AND MORE



produced by paul mcdormon management: brad gelfond, rebecca management ©1997 sig music llc www.dreamworldrecords.com

22 - **18** RHYTHMIC TOP 40 MONITOR AUDIENCE REACH 9 MILLION

102 - **66** BDS TOP 40 MAINSTREAM AUDIENCE REACH 5 MILLION

**ALREADY OVER
1500 SPINS**

- WKTU
- Y100
- KIIS
- POWER 96
- B96
- WWKX
- B100
- WDRQ
- WJMN
- KHKS
- WHHH
- KUBE
- KHYS
- WFHN
- WXYV
- WNVZ
- WFLZ
- KRBE
- KHOM
- KS107
- KGGI
- FM102
- KKRZ



JANET "TOGETHER AGAIN"



#2 SOUNDCAN ALBUM IN AMERICA!

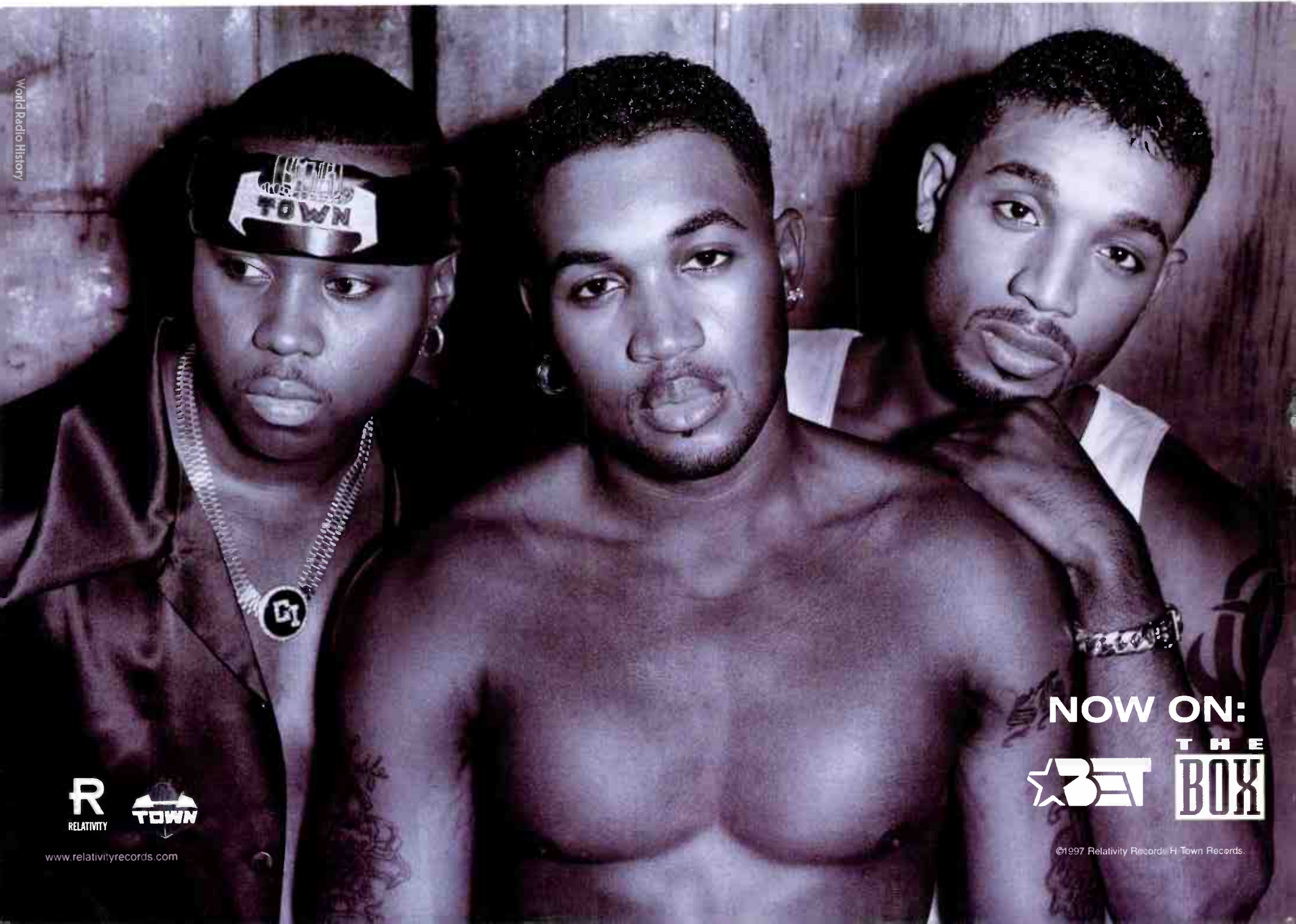
the next smash from the new album **The Velvet Rope** Executive Producers: Janet Jackson and René Elizondo, Jr. Produced by Jimmy Jam & Terry Lewis and Janet Jackson. RD Worldwide Management, B.V. <http://www.janet-jackson.com> © 1997 Black Doll, Inc.





H-TOWN

They Like It Slow



World Radio History



www.relativityrecords.com



©1997 Relativity Records. H-Town Records.