

TOP 40 ■ AIRPLAY Monitor

• We Listen To Radio •

July 12, 1996 \$ 4.95 Volume 4 • No. 29

TOP 40 HIGHLIGHTS

MAINSTREAM

#1

ALANIS MORISSETTE

You Learn (MAVERICK/REPRISE)

★★★ AIRPOWER ★★★

MARIAH CAREY • *Forever* (COLUMBIA)

DONNA LEWIS • *I Love You Always Forever* (ATLANTIC)

NEW RELEASES

THE CORRS • *Forgiven Not Forgotten* (143/LAVA/ATLANTIC)

MELISSA ETHERIDGE • *Nowhere To Go* (ISLAND)

TOM PETTY & THE HEARTBREAKERS • *Walls* (WARNER BROS.)

POE • *Angry Johnny* (MODERN/ATLANTIC)

RHYTHM CROSSOVER

#1

BONE THUGS N HARMONY

Tha Crossroads (RUTHLESS/RELATIVITY)

★★★ AIRPOWER ★★★

NO RECORDS QUALIFIED FOR AIRPOWER THIS WEEK

NEW RELEASES

3T FEATURING MICHAEL JACKSON • *Why* (MJJ/550 MUSIC)

BAYSIDE BOYS • *Caliente* (ATLANTIC)

THE BRAXTONS • *So Many Ways* (ATLANTIC)

RAPPIN' 4-TAY • *A Lil' Some 'Em Some 'Em* (CHRYSALIS/EMI)

T-BOZ • *I Touch Myself* (ROWDY/ARISTA)

ADULT TOP 40

#1

TRACY CHAPMAN

Give Me One Reason (ELEKTRA/ECG)

★★★ AIRPOWER ★★★

JEWEL • *Who Will Save Your Soul* (ATLANTIC)

ADULT CONTEMPORARY

#1

CELINE DION

Because You Loved Me (550 MUSIC)

★★★ AIRPOWER ★★★

NO RECORDS QUALIFIED FOR AIRPOWER THIS WEEK

NEW RELEASES

MELISSA ETHERIDGE • *Nowhere To Go* (ISLAND)

TOM PETTY & THE HEARTBREAKERS • *Walls* (WARNER BROS.)

What Would A Modern/AC Chart Look Like? Monitor Finds Out

by Sean Ross

Modern/adult: It's definitely the flavor of the fortnight. But is it a format?

A lot of industryites have asked that question. Airplay Monitor wondered, too. So we commissioned a special 40-position sample chart from Broadcast Data Systems this week, made up of the 14 monitored stations that best fit that description. (The first chart can be found on page 5; in subsequent weeks, it will be available exclusively to on-line BDS subscribers. The stations used in the sample chart will continue to report to their current formats.) And we found that, even with the presentational and philosophical differences among stations, there is a surprising amount of consensus.

• Even as the modern/adult format defines its ground rules, there are already a lot more records that its relatively small universe of stations can agree on than there are records that mainstream top 40 or top 40 adult stations can agree on.

• Modern/adult stations are distinguished from top 40/adult and traditional modern stations more in terms

of what they won't play than what they do play. While there are only one or two titles at most that can really be said to be indigenous to the modern/adult format—most have already developed a story at top 40, AC, modern, or all of the above—there are recent No. 1 records from the top 40/adult and modern rock side in which the new format shows little or no interest.

• In terms of the artists it plays, modern/adult stations usually look for artists who have credibility in the modern rock format, although there are one or two notable exceptions. But in most other matters—especially the issue of when they play songs—modern/adult stations tend to resemble top 40/adult stations more than their modern counterparts, with a higher correspondence to the former chart than the latter.

• Although the modern/adult format is, in many ways, the '90s equivalent of the '70s soft rock format, it is not based as heavily on singer/songwriters as one might think. Female singer/songwriters who would have been comfortable on a '70s soft rock station, from Jewel to Jann Arden to Tracy Chapman to Na-

Continued on page 5

ALREADY 3
TOP 40/RHYTHM-CROSSOVER
MONITOR!!!!



Keith Sweat twisted

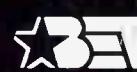
The premiere single and video from his self-titled new album

WOW!!!!
IMMEDIATE SALES BLOWOUT,
OVER 630,000 CD'S SOLD
152,948 IN JUST 10 DAYS!!!!

PRODUCED BY KEITH SWEAT AND ERIC MCCAINE
Management: Marvelous Enterprises

THESE STATIONS COULDN'T WAIT!:

KMXX	WERQ	WWKX
KQKS	KZII	KTFM
WJJS	KWIN	KKSS
KLUC	Z90	KHTN
KCAQ	KGGI	KDON
WJMH	WFLZ	KYLD
KMEL		KZHT



DEBUTS AT MAINSTREAM RADIO THIS WEEK!

On Elektra compact discs and cassettes. <http://www.elektra.com>

© 1996 Elektra Entertainment Group, a division of Warner Communications Inc. A Time Warner Company.



TOM PETTY AND THE **HEARTBREAKERS**

From their new album: *Songs and Music From The Motion Picture She's The One*



Produced by Rick Rubin, Tom Petty and Mike Campbell.

Management: Tony Dimitradis for East End Management. www.wbr.com/radio ©1996 Warner Bros. Records Inc.



TOP 40 TOPICS BY SEAN ROSS

Where The Holes Are, Part Deux

For hardcore radio junkies—those of us who use our vacations and weekend getaways as an excuse to listen to radio, not to escape it—there are always one or two heavily played songs by which you remember any trip. For several years, one sign of top 40's decline was that the song you remembered from button punching wasn't likely to be a top 40 hit anymore. It was more likely to be country. Or an oldie. Or classic rock. (Or, for the rest of you who matured normally, a story from "All Things Considered," perhaps.)

I still make trips like those on occasion. With no mainstream top 40 in Baltimore or Washington, D.C., the records by which I'll remember the last Bobby Poe convention are "Blue" by LeAnn Rimes and "If I Ruled The World" by Nas. But things are getting better. I drove a New York-Wilkes-Barre, Pa.-Binghamton, N.Y.-Elmira, N.Y.-Rochester, N.Y.-Syracuse, N.Y.-Albany, N.Y.-New York circle this weekend, and I'm proud to report that even if I did hear "Anyway You Want It" by Journey more than once, it was no longer the most-played song of the trip. (Honors on that score go to "You Learn," which, since that's the No. 1 mainstream record, is how it should be, with runners-up including "Macarena," "Champagne Supernova," "Killing Me Softly," and "Counting Blue Cars.")

This is one more indicator that the top 40 holes are being filled in. Unlike the New York-D.C. trip, there wasn't one market on this route without a top 40. But there are still cities where top 40 is MIA. So here's part two of this column's analysis on where the holes are (or are not) in descending order of market size.

Sacramento, Calif. (market No. 29)—Even before "Ironic" and "Because You Loved Me" became rhythm-crossover mainstays, **KSFM** was one of those top 40s that would at least spike the biggest pop records, once those songs reached critical mass, "One Of Us" being the most recent example. It may surprise everybody to read this here, but as long as the crossover outlets are willing to cover their bases on some pop titles, it would be hard to do mainstream top 40 here or in Fresno, Calif., Monterey, Calif., San Jose, Calif., Albuquerque, N.M., or San Bernardino, Calif. Seeing it work again in San Francisco would be the acid test—although that particular term does have a different meaning in San Francisco.

Salt Lake City (No. 35)—**KUTQ** (Q99) is starting to act more like a top 40 station than a modern rocker. So any opportunity that exists here again depends on where new PD **Ken Carr** and company end up. Even with Q99, top 40/adult **KBEE** (B98.7), **KQMB**, top 40/rhythm **KZHT** (Hot 94.9), several moderns, and three countries fragmenting the young-adult audience, I say there's room here for a larger-than-life, mass-appeal top 40 along the lines of the old **KCPX** until one of the borderline players commits. And this being America's most over-radioed market, the minute somebody did that, three other stations would join 'em.

Memphis (No. 43)—Through the '80s, a few folks took a run at adult-leaning **WMC-FM** (FM100) with hot-rocking, flame-throwing top 40 and didn't understand why they couldn't dent FM100 when that station was still playing **Alabama** oldies. At the time, FM100 was sufficiently well-entrenched and just close enough to top 40 to own that image. And those top 40 partisans that weren't controlled by FM100 were listening to the R&B stations, **WHRK** (K97) and **KJMS** (Majic 101), both of which could throw in a **Bryan Adams** or **Gloria Estefan** record when they felt like it. But that was 10 years ago. Today's 22-year-old doesn't have the same perception of K97 or FM100 as a top 40

station. And some of the stations that should be getting the top 40 audience by default—specifically, the young-end rocker, the modern rocker, and the young-end country—are not, at the moment, pulling boxcar numbers, suggesting an opportunity for *somebody*. With nearby Little Rock, Ark., now out of the picture, the cradle of rock'n'roll may be the biggest top 40 hole in the country right now.

Worcester, Mass. (No. 106)—Because of its proximity to a half-dozen other Southern New England markets, this is one city that has *never* had its own top 40 on FM, at least in recent memory. Instead, it has two mainstream ACs, an album rocker that now targets Boston, and a suburban hot AC. Top 40 isn't the only hole in this market. There's not a major country outlet. There's not a mainstream R&B FM anywhere in Southern New England. But there's at least room for one more big player to own the hometown station and entertainment station positions—so why not do top 40?

Jackson, Miss. (No. 118)—The last top 40 in this market went through several call-letter changes and permutations of the format before going young country; it didn't leave much of a legacy, which may say something about why nobody seemed eager to replace it. Right now, the market is divided between **WJMI**—one of the best R&B stations anywhere—two well-programmed country outlets, and hot AC **WJDX**, which owns the heritage top 40 calls in the market and which has evolved from mainstream to hot AC lately but seems to have no plans to go further. **WJDX** is, in addition, the duopoly partner of the two country stations, which means that it might be hard for any new player to make a dent saleswise. But from a programming standpoint, the hole is there.

Portland, Maine (No. 162)—It's not that you can't hear top 40 in this market. **WMME** Augusta, Maine, comes in fine here. So does suburban **WRED** (R96). So does New Hampshire's top 40/adult **WZPK** (Peak FM). The latter two stations made a quick pass at being Portland stations when the market's previous top 40s went away, without much success. And, again, this is a market in which both stations left on bad terms, after a particularly ugly late-'80s battle. For top 40 to work here, it would have to be local. It would have to be well-financed. And it would have to ingratiate its way into the community very quickly.

Where else? Savannah, Ga., is almost identical to Jackson in terms of the existing players, and it's been without top 40 for a longer time, so there might not be as much baggage to overcome. Topeka, Kan., Shreveport, La., Fayetteville, N.C., and Columbus, Ga., have also been without top 40 for a while. Montgomery, Ala., just lost its last top 40 this year. At the moment, market observers are eyeing both the third country station and the hot AC warily to see who wants to be first.

The problem in most of the aforementioned markets is that nobody wants to be first. The problem in the remaining markets is that nobody minds being second. Meaning that we could see too many players swarm into the format in some markets, keep one station from developing a legitimate success story, and discourage anybody from filling some of the remaining holes that exist. We're already starting to hear on-air sniping between competing top 40s again, one of the things that probably hurt the format last time.

So far, we've gotten relatively lucky in the past few months—people have wanted to fill some top 40 holes without waiting to see a lot of success stories. Ultimately, however, it's going to take actual successes to rebuild the format. And it's going to take success stories that can withstand top 40's tendency to self-destruct.

Mike Reeves: Just Glad To See You



New WMTX (Mix 96) Tampa, Fla., PD/afternoon jock Mike "the Human Compass" Reeves welcomes you and your family to sunny Florida with open, er, arms. Please drive carefully, and keep both eyes on the road.

Fulmer Returns To Airplay Monitor

Jack's back. Jack Fulmer, most recently an MCA regional alternative marketing/promotion manager, returns to Airplay Monitor as an account manager for Top 40 and Rock Airplay Monitors. Fulmer,



FULMER

who replaces Andrea Thompson, begins July 16.

Fulmer was Airplay Monitor's West Coast representative in 1994-95 before leaving for MCA. He has been an account executive with **KROQ** Los Angeles as well as rival **KFI/KOST**. Fulmer will be based in New York and cover accounts east of the Mississippi.



RADI ACTIVE BY KEVIN CARTER

Wyatt Returns To Crossover Radio

Veteran Los Angeles radio figure **Jeff Wyatt** (**KHIS**, **KPWR**) has been named GM of L.A.'s new top 40/dance outlet, **KACD/KBCD** (Groove Radio.) No air staff has been named yet, but **Joe "Boomer" Servantes** and **China Smith** have been retained from the station's AC format, and word is that **Jim "Poorman" Trenton** will sign on. Groove Radio also hires **Peter Nichols** from rival **KROQ** as graphic designer.

KBZR (103.1) Phoenix, which had been running R&B oldies since its sign-on, kicked off 24-hour-a-day live mixers July 3. No jocks yet.

WBBM-FM (B96) Chicago expands its weekend "Private Lives" sex talk show to morning drive. The show, hosted by **Kelly Johnson** and **Karen Hand**, is now heard 8-10 a.m. and will still play six songs an hour, according to MD **Erik Bradley**. Morning team **George McFly** and **Frankie "Hollywood" Rodriguez** now broadcast 5-8 a.m. The Chicago Sun-Times reports that **SJS Entertainment** is picking up the Sunday night version of "Private Lives" for national syndication. The Sun-Times also reports that Evergreen is in the process of buying top 40/adult **WPNT** (FM100).

WPST Trenton, N.J., APD/MD **Dave McKay** is upped to PD, as VP of programming **Michelle Stevens** drops the daily reins to oversee programming for Nassau Broadcasting's 12 stations, including recently acquired AC **WOBM AM-FM** Ocean County, N.J.

KWMX (Mix 107.5) Denver's morning team of **Eric Ferguson** and newperson **Robbyn Hart** have exited in preparation for the arrival of **Rick Stacy**. **KWMX** production director **Dirk Steele** and morning producer **Larry Ulibarri** are currently filling in on mornings.

Simulcast top 40 AM **KCBQ** San Diego flips to N/T... Former **WCOD** Cape Cod, Mass., GM **Bill Files** is named GM at hot AC **WFKS** (Kiss 99.9) Daytona Beach, Fla., replacing **Mike Loures**. Look for Kiss to move to a hotter top

40/adult approach.

Top 40/adult **WAEV** (Mix 97.3) Savannah, Ga., and gospel/R&B adult sister combo, **WSOK/WLVH**, have been sold to Patterson Broadcasting, owner of AC/country **WYKZ/WCHY**.

Top 40/adult **WEZB** (B97) New Orleans raids rival **KHOM** (Mix 104.1) night jock **Skid Marxx** for afternoons. He'll be known as **David Marxx**. B97 taps **Kim Carson**, last heard in mornings at country rival **WNOE**, for middays.

Billy Burke exits afternoons at **KSFM** Sacramento, Calif. Will he resurface shortly in some capacity at **KHIS** Los Angeles? Meanwhile, **KSFM** taps **Randi** from **WPGC-FM** Washington, D.C., for nights, replacing **Naughty Boy**... **KJMZ** (Mix 94.5) Las Vegas, which recently flipped to top 40/adult, gets new calls **KMXB**.

WHTZ (Z100) New York overnighter **Jeremy the Phone Guy** segues to crosstown **WXRK** (K-Rock) for swing... Top 40/rhythm **CIDC** Toronto morning man **Jesse Dylan** returns to crosstown rocker **CILQ** (Q107), where he's reunited with **Gene Vilitis**.

AC **WMAS** Springfield, Mass., promotion director **Karen Ann McCarthy** crosses to rival **WHYN-FM**, replacing **Kevin Matthews**, now with **WFHN** (Fun 107) New Bedford, Mass.

WMXS (Mix 103) Montgomery, Ala. GM/PD/market legend **Larry Stevens** steps down to focus on his morning show. Colonial Broadcasting senior VP of programming **Carson James**, who oversees sister country **WLWI**, picks up day-to-day operations of both stations, with creative director **Al Mason's** assistance.

KLYV Dubuque, Iowa, overnight jock **Jason Hillery** nabs MD stripes.

WBZZ (B94) Pittsburgh overnighter **Troy Garrett**, who was recently moved to that slot from nights, now exits altogether.

Remember **KKYK** Little Rock, Ark., veteran **Mark McCain**? He resurfaces in that market doing afternoons at country **KDDK** (the Duck).

Chex Party Mix With Popeye's Better Half



KHMX (Mix 96.5) Houston threw a private listening party with Columbia recording artist Sophie B. Hawkins. Pictured post-gig, from left, are Columbia's Shawna Miller, MD Rich Anhorn, Hawkins, PD Pat Paxton, APD Barry McKay, and Columbia's Elaine Locatelli.

RADIO CONCERT MONITOR

DATE	CALL LETTERS	EVENT	SCHEDULED TO APPEAR
July 13	KWIN Stockton, Calif.	Summer Splash 2	Afro-Rican, Rob Base, Deborah Cox, Delinquent Habits, Digital Underground, Jocelyn Enriquez, Doug E. Fresh, Monifah, MC Shy D., CeCe Peniston, Quad City DJ's, Rhythmicentric, Run-D.M.C., Lina Santiago, Sugarhill Gang, Young MC, Johnny Zee
July 14	KYLD San Francisco	Wild 107/MTV Beach Party	Afro-Rican, Buffy, Delinquent Habits, El Presidente, Frost, Quad City DJ's, Total, Johnny Zee, more
July 15	WMGI Terre Haute, Ind.	Summer Jam 2	Stevie B., J'Son, MTS, Willi One Blood, Outta Control, Rochelle, Tia, Tine
July 19	KZFM Corpus Christi, Texas	Summer Jam	Louie Cordero, Immature, Quad City DJ's, Tony Rich, Young MC, more
July 19	WZJM Cleveland	Bicentennial	Jann Arden, Patti Griffith, Billy Mann
July 20	KTFM San Antonio, Texas	Summer Jam	Angelina, Artie The One-Man Party, Color Me Badd, Delinquent Habits, Immature, DJ Laz, Li'l Suzy, Quad City DJ's, Tony Rich Project, Rhythmicentric, 3T
July 20	WZJM	Bicentennial	Blessid Union Of Souls, Donna Lewis
July 21	WZJM	Bicentennial	3T, Jordan Hill
Aug. 2	WBZZ (B94) Pittsburgh	Three Rivers Regatta	Lisa Loeb, Tony Rich
Aug. 3	KMEL San Francisco	Summer Jam 10	TBA
Aug. 3	WKRQ Cincinnati	One Earth Party 2	Goo Goo Dolls, Lisa Loeb, Jars Of Clay, more
Aug. 24	WNCI Columbus, Ohio	35th Birthday Party	TBA
Aug. 25	WBZZ	15th Birthday	TBA
Sept. 1	KKRZ Portland, Ore.	Last Chance Summer Dance	TBA
Sept. 6	WZJM Cleveland	Summer Extension Jam	TBA
Sept. 14	WKRQ	One Earth Party 3	TBA
Sept. 14	WERQ Baltimore	Harbor Jam	TBA

Let us monitor your event! Kevin Carter: 213-525-2303 or E-mail KCarter@billboardgroup.com

Dance Revival, Modern AC Panels On Tap

The dance boom and the growth of the modern/adult format are among the hot topics to be discussed at the upcoming Billboard/Airplay Monitor Radio Seminar and Awards, scheduled for Sept. 5-7 at the New York Sheraton.

Top 40-specific sessions include "The Dance Revival: Does It Feel Mighty Real?" With the meteoric rise of WKTU New York

you meet them at your next staff meeting.

Another session, "Four Stations, One PD, And A Telecom Bill: So Who's Listening To The Music?" will attempt to answer the question of what happens in this post-Telecom Act era of consolidation, in which one PD makes music decisions for multiple stations. Programmers in all formats who oversee more than one station will discuss the challenges.

DAB, hard-drive automation, digital downloading of music, and the Internet will be among the subjects tackled at the session "Technology Isn't Just For Techno-Geeks Anymore." Find out how these high-profile technical issues will affect radio and its relationship with labels.

Another new session this year will be "The All-Format Market Leaders Panel," during which PDs of the leading stations in major markets will talk about the issues they have in common that transcend format boundaries.

Returning this year will be the "Air Personality Supergroup" session, in which top jocks from all formats compare war stories and discuss what it takes to be a successful entertainer today. Also returning is the popular "Music Trivia Contest And Game Show"—hosted by Airplay Monitor editor Sean Ross, "Radio's Rainman"—as trivia geeks gather under one roof to show off their heads full of obscure facts and compete for semi-valuable prizes.

Other related seminar activities include opening night festivities Sept. 5, breakfast at the Hard Rock Cafe the next morning, and a cocktail party Friday evening. The seminar culminates with the annual Radio Awards dinner and ceremony Sept. 7.

KEVIN CARTER

1996 Billboard & Airplay Monitor Radio Seminar & Awards

and the comeback of dance music, the effect of dance on today's top 40 radio, and where the product will come from, will be discussed.

Other format panels will delve into modern rock, AC, triple-A, and the emergence of the modern AC format, pioneered by KYSR (Star 98.7) Los Angeles and KFMB-FM (Star 100.7) San Diego. (See story, page 1.)

As a follow-up to last year's popular group-heads panel, "By Next Year One Of These Men Will Own Your Station," this year's seminar will present "Group Heads: One Of These Men Owns Your Station." Last year's panel featured Evergreen's Scott Ginsburg, Group W/CBS' Dan Mason and ARS' David Pearlman. Hear from radio execs who are aggressively buying stations across the country before

Editor Has Trouble Spelling 'Fillasufer'



Columbia recording act Philosopher Kings played at WNVZ (Z104) Norfolk, Va.'s recent summer show. Shown, from left, are PD Don London, Columbia's Lee Leipsner, Philosopher King Jason Levine, Columbia's Lisa Ellis, and fellow Kings Gerald Eaton and Jon Levine.

PUBLISHER: MICHAEL ELLIS
 EDITOR: SEAN ROSS
 MANAGING EDITOR: KEVIN CARTER
 DIRECTOR OF CHARTS: THEDA SANDIFORD-WALLER
 ADULT CHART MANAGER: STEVEN GRAYBOW
 REPORTER: MARC SCHIFFMAN
 CHART PRODUCTION MANAGER: MICHAEL CUSSON
 ASST. CHART PRODUCTION MANAGER: PAUL PAGE
 EDITORIAL PRODUCTION MANAGER: BARRY BISHIN
 ASSOC. EDITORIAL PRODUCTION MANAGER: MARCIA REPINSKI
 EDITORIAL PRODUCTION: MARTIN BROOMFIELD, SUSAN CHICOLA
 MARC GIAQUINTO, MARIA MANLICIC
 COPY EDITOR: CARL ROSEN
 ADVERTISING PRODUCTION MANAGER: LYDIA MIKULKO
 ADVERTISING PRODUCTION ASST.: CINDEE WEISS
 ADVERTISING ART DIRECTOR: RAY CARLSON

NATIONAL ADVERTISING MANAGER: JON GUYN
 ADVERTISING SALES: GARY NUEL
 CLASSIFIED ADVERTISING: LAURA RIVCHUN
 ADVERTISING SERVICES MGR.: MICHELE JACANGELO
 SALES ASSISTANTS: EVELYN ASZODI, ERICA BENGTON,
 ALEX VITOLUIS, ALYSE ZIGMAN

EDITORIAL ADVISOR: TIMOTHY WHITE
 PRODUCTION DIRECTOR: MARIE GOMBERT
 DIRECTOR OF MARKETING: ELISSA TOMASETTI
 CIRCULATION MANAGER: JEANNE JAMIN

©1996 BPI Communications
 1515 Broadway, New York, NY 10036 212-764-7300
 5055 Wilshire Blvd., 7th floor, Los Angeles, CA 90036 213-525-2300
 For subscriptions call: 800-722-2346



PRESIDENT: HOWARD LANDER

Modern/AC: We Found Out

Continued from page 1

talie Merchant, are a major part of the format. But so are bands who broke through a more conventional modern rock route: Smashing Pumpkins, Foo Fighters, Oasis, etc.

At press time, there were 18 large- and medium-market stations that could reasonably be said to be modern/adult outlets. Those included stations that were taking a more top 40 or AC approach to the format, most notably the much-copied KYSR (Star 98.7) Los Angeles and KFMB-FM (Star 100.7) San Diego, and those that operate as part of the modern rock community, specifically such "rock alternative" outlets as KXPK Denver and KAEF Spokane, Wash. What we felt all those stations had in common—even before looking at a chart—is that they chose primarily from modern's musical universe, that their target was older than a conventional modern station, and that they played much of the gold that had been exiled to special programming at most moderns.

Of the 18 stations now closest to the adult modern format, 14 were available through BDS. For the purposes of our custom chart only, we took five modern rock stations—KAEF, KXPK, WLJR Long Island, N.Y.; KZON Phoenix; and WWCD Columbus, Ohio—and four stations from the top 40/adult panel: KFMB, KYSR, WSHE Miami and WTMX Chicago. We also included KQPT Sacramento, Calif. (currently a triple-A reporter), WDIZ Orlando, Fla., and KRRK Omaha, Neb. (two stations that just switched from mainstream and modern rock, respectively), and two mainstream top 40 reporters, WTIC-FM Hartford, Conn., and KALC (Alice 106) Denver. BDS is currently working to monitor three of the format's remaining outlets—WPTF Norfolk, Va., KZZP Phoenix, and KRQR (Alice 97.3) San Francisco; the remaining one, KKNB Lincoln, Neb., is in a nonmonitored market.

Many of those stations might think of themselves as having little in common. But we found a surprising amount of consensus. Within the top 30 most-played titles, 10 songs—or one-third—are on all 14 stations. Another five songs are on 13 of the 14 stations.

By comparison, only four songs ("You Learn," "Give Me One Reason," "Ironic," and "Who Will Save Your Soul") were on all 82 mainstream top 40 stations for a comparable period. Only "Give Me One Reason" is on all 47 top 40/adult reporters.

What don't modern/adult stations play? They differ from the top 40/adult panelists by not play-

ing that chart's current hits by Celine Dion, Tony Rich, the Fugees, George Michael, Robert Miles, or Los Del Rio, some of which made it on to one or two of the stations on our custom panel, but none of which were in modern/adult's 40 most-played songs. They differ considerably from conventional modern rock. On the June 28 modern chart, at least six of the top 10 were records that didn't make the modern/adult chart, songs from the Butthole Surfers, Stone Temple Pilots, No Doubt, Soundgarden, Tracy Bonham, Garbage, and Porno For Pyros that are either too hard or too new for many modern/adult outlets. By having sat out, in most cases, "Because You Loved Me" and, thus far, "Pepper," modern/adult stations have passed on records that were No. 1 in the top 40/adult and modern formats.

Despite this, modern/adult stations will occasionally make exceptions for nonmodern-image artists that modern rock stations cannot. Eric Clapton's "Change The World" is a top 10 modern/adult record with airplay on about 60% of our custom panel. Jann Arden's "Insensitive" is top 15. Donna Lewis' "I Love You Always Forever" cracks the top 40 this week.

Modern/adult stations tend not to play records that haven't already been broken by other formats. The closest thing to an indigenous modern/adult record is Radiohead's "High And Dry," which received airplay at top 40 and modern but never became a "Run-Around" or "1979" in either format. Another possible exception is Why Store's "Lack Of Water," which charts here largely, although not exclusively, on the strength of airplay at the panel's modern and triple-A reporters.

The chart you see below covers the period from June 25 to July 1, a time frame roughly comparable with the charts in last week's Airplay Monitors. If you want to see what the chart will look like this week, it's available to BDS subscribers who call up the "charts" menu, then select the "adult modern" chart. (If you don't subscribe to BDS, call 800-688-4634 for more info.)

At the present, we're merely making this chart available in this issue and through BDS as a service to the industry. With the jury still out on whether modern/adult is an enduring format, we won't make this a regular Airplay Monitor chart, yet. Feel free to call either Monitor's Sean Ross at 212-536-5264 or BDS' Heston Hosten at 212-789-1261 with comments and suggestions.

The Modern/Adult Top 40

TW	LW	Title	Artist	Stations	Spins TW	Spins LW
1	1	Give Me One Reason	Tracy Chapman	13	407	401
2	3	Who Will Save Your Soul	Jewel	14	381	378
3	2	You Learn	Alanis Morissette	14	375	394
4	4	Counting Blue Cars	Dishwalla	14	357	325
5	5	Standing Outside . . .	Primitive Radio Gods	10	296	271
6	8	Follow You Down	Gin Blossoms	14	283	242
7	10	Change The World	Eric Clapton	9	277	240
8	15	Jealousy	Natalie Merchant	14	251	198
9	17	Everything Falls Apart	dog's eye view	12	251	193
10	11	Ironic	Alanis Morissette	14	238	191
11	6	You Still Touch Me	Sting	10	238	250
12	9	The World I Know	Collective Soul	14	232	241
13	11	Closer To Free	BoDeans	12	232	240
14	12	Flood	Jars Of Clay	11	205	236
15	19	Insensitive	Jann Arden	9	202	182
16	13	Wonder	Natalie Merchant	13	197	215
17	14	Name	Goo Goo Dolls	14	186	202
18	7	Old Man & Me	Hootie & the Blowfish	14	178	214
19	16	1979	Smashing Pumpkins	13	172	196
20	23	High And Dry	Radiohead	8	170	157
21	21	Big Me	Foo Fighters	10	168	166
22	22	Tonight, Tonight	Smashing Pumpkins	8	160	165
23	NEW	Tucker's Town	Hootie & the Blowfish	9	151	25
24	29	Run-Around	Blues Traveler	14	141	128
25	27	Lack Of Water	Why Store	6	136	135
26	33	Roll To Me	Del Amitri	12	133	120
27	36	Hook	Blues Traveler	13	132	111
28	30	Mint Car	Cure	8	132	128
29	20	Champagne Supernova	Oasis	10	131	179
30	34	Breakfast At Tiffany's	Deep Blue Something	13	130	117
31	25	December	Collective Soul	13	129	147
32	32	Missing	Everything But The Girl	9	129	121
33	24	Too Much	Dave Matthews Band	7	124	151
34	26	Don't Cry	Seal	9	122	147
35	40	Good Intentions	Toad The Wet Sprocket	13	121	105
36	RE	Carnival	Natalie Merchant	12	120	74
37	RE	Mr. Jones	Counting Crows	13	118	103
38	31	Just A Girl	No Doubt	9	118	122
39	38	Til I Hear It From You	Gin Blossoms	13	115	108
40	NEW	I Love You Always Forever	Donna Lewis	5	115	77

MONITOR PROFILE

PD Background Gives Gehron A Unique Perspective In Today's Marketplace

John Gehron doesn't fit the profile of your typical corporate bean-counter. As co-COO (with David Pearlman) of Boston-based American Radio Systems, he is one of the growing number of broadcasting execs who broke out of the programming ranks, most notably at WLS Chicago.

"The industry has never experienced what we're going through today," Gehron says, in a massive understatement. "This is how we now define the future."

In a post-Telecom Act world, where corporations swap stations like so many trading cards, ARS continues to seek active growth opportunities. And unlike other broadcast giants, it isn't limiting acquisitions to the top 10 or even top 20 markets. "We prefer to concentrate on growth markets," Gehron says. "Markets that aren't over-radioed, where we can become one of the key players, or *the* key player. That's our goal—to control the radio dollars and dollars from other media." That's why ARS is operating in markets where it has the ability to direct the business, says Gehron, such as Las Vegas, San Jose, Calif., Austin, Texas, West Palm

Beach, Fla., Portland, Ore.—"the markets of tomorrow," he says.

stand-alones will be able to rise with the tide," he says. "I'm not convinced that an owner who's left with a single station can't be successful, as long as they're running that station well and providing a product the listener wants."

"Radio won't grow by taking money from small operators," Gehron continues. "As big as ARS might get, we can never own enough stations in a market to cover every niche format possible. The beauty of radio is you can change it overnight simply by bringing in a stack of new records, and if you play them in a better order than the other guys, you'll win."

"Look how quickly a single station can become successful. In the country's largest, most competitive market, WKIU went from nothing to No. 1 in less than 90 days. Anybody could have done that if they were smart. A stand-alone went against the big guys and beat everybody . . . The listener doesn't care who owns the radio station, whether it's Evergreen, ARS, or Joe and Mary Smith."

Having a former DJ end up co-COO of ARS is akin to the PD beating out the sales manager for the GM's job. Ten years ago that was a rarity. Today, more programmers are successfully making the transition to the corporate suite. Gehron recently moderated a panel for the Broadcast Ad Club, and among the owners and managers in attendance were Tribune's Wayne Vriesman, who started as a news writer; Viacom's Bill Figenshu, who started as a DJ; and CBS honcho Dan Mason, another former PD.

"The job description of today's PD has changed," Gehron says. "They used to be concerned only with playing records, but today, because of deregulation, a PD has become much more well-rounded, more business-oriented, more capable."

Gehron programmed the legendary WLS before being promoted to GM in 1983. He later ran WODS Boston for CBS, until Pyramid brought him back to Chicago as GM of jazz/AC WNUA. He returned to Boston with ARS in '94, six months after Steve Dodge formed the company, which, at the time, consisted of the former Atlantic Radio, Stoner, and Pearlman's Multi-Market properties.

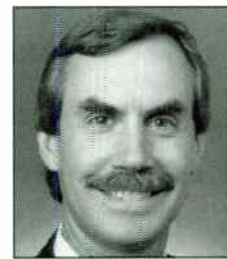
Gehron sees another advantage to owning more than one property per market: One-stop shopping for labels. Recording artist Meat Loaf recently visited WBMX Boston and ended up visiting four ARS stations, including all-sports WEEI and N/T WRKO. "Labels can now work with groups of stations in a market instead of worrying about two top 40s fighting each other," he says. "It takes the pressure off the labels over playing favorites. Now, the owner can decide where the artist will appear, not the label."

"My primary job is to act as a resource. I can offer my expertise in marketing and programming and can make our stations aware of trends in other markets. Hopefully, I have more time for strategic thinking because I'm not on the firing line every day."

For the future, look for ARS to slow down its expansion into new markets, says Gehron, in favor of beefing up its rosters in existing markets. ARS recently upped its critical mass in Rochester, N.Y., Buffalo, N.Y., Dayton, Ohio, Hartford, Conn., and Boston.

"ARS is a people-oriented company whose goal is to grow people faster than assets," he says. Gehron and Pearlman each oversee seven markets: Pearlman covers the East Coast; Gehron, the West Coast.

"It's our goal to keep that human element alive," says Gehron. CEO Steve Dodge "sets the tone, along with [CFO] Joe Winn. One of the reasons I went to work for ARS in the first place is our values are similar." **KEVIN CARTER**



John Gehron
Co-COO
American Radio Systems

'Anybody could have done [WKTU] if they were smart'

SERVICES

SHOW PREP

Don't go on the AIR without your BROADCAST PARTNER

Bizarre bits, Friday horrible headlines, stupid quotes, topical news, trivia, plus fresh monthly airdrops. Plus much more. Reasonable rates! Call now, your PREP is done!!!

BROADCAST PARTNER
(605) 439-3201

VOICEOVERS

When Excellence Matters

KISS-FM, Los Angeles
B-96, Chicago
WKIS, Miami
KISS-FM, Dallas
K-Hits, Phoenix
Virgin Radio, London

Sean Caldwell
PRODUCTIONS
Country CHR Rock Hot AC
voice-over and imaging
(813) 926-1250

BILL A. QUINN ...

voice of The Montel Williams Show, Showtime At The Apollo, ABC Radio Networks ... Introduces The 'Q' Factor - Dry Voice Imaging for your radio station!!

Your format + The 'Q' Factor = The Winning Combination
'For over 15 years I've depended on this voice to give my radio stations, personality, warmth, humor, and most of importantly distinction.'
Quincy McCoy, Urban Editor Gavin Magazine (former P.D. Majic 108 St. Louis; WBSL New York)

To request your demo call toll free:
1-888-92-VOICE or e-mail
ComVoice@AOL.com

CHOOSE THE VOICE FOR TODAY AND TOMORROW CHOOSE

JJ McKay Productions, Inc.
(214) 539-2620
COUNTRY-KEYE, KRAK
CHR WMTX, WSTW
NEWSTALK-KSDO, WFBC

FINALLY!

AFFORDABLE, SAME DAY/NEXT DAY DELIVERED, DIGITALLY MASTERED VOICE TALENT FOR RADIO/TELEVISION AND PRODUCTION HOUSES.
NO OVERTNIGHT SHIPPING.
NO GENERATION LOSS

• Receive work the same day you request it • Digitally mastered CD quality recording • Modem or fax script send • Unique, voice talent.

THE DISTINCTIVE VOICE OF CHET SISK IS NOW AVAILABLE TO YOUR RADIO AND TELEVISION STATION FOR: SWEEPERS • LINERS • IMAGE PROMOS • NEWS BRIEFS • TOPICAL FEATURES.
FOR MORE INFORMATION AND A DEMONSTRATION TAPE, CALL
303-620-5619

CVO
WORLDWIDE PRODUCTIONS

HELP WANTED

"AMERICAN RADIO SYSTEMS' NEW MIX 94.1 LAS VEGAS HAS PRIME 'SLOTS'. CREATIVE POSITIONS FOR CREATIVE TALENT WHO CAN ENTERTAIN AND RELATE TO THE NEW HOT AC LIFESTYLE. FULL AND PART-TIME INCLUDING MORNINGS AND AFTERNOONS, PLUS PRODUCTION AND PROMOTIONS. MINIMUM 2 YEARS EXPERIENCE AND KNOWLEDGE OF BASICS REQUIRED. SEND T&R: MIX 94.1-PROGRAM DIRECTOR 6655 W. SAHARA C-216 LAS VEGAS, NEVADA 89102 NO CALLS. A.R.S. IS AN EQUAL OPPORTUNITY EMPLOYER."

MIX 96

Great market, great station, great facility! WMTX, one of the nation's most successful ACs has immediate opening for the following ... Morning show announcer ... the best in the business. T&R to:

Mike Reeves, c/o WMTX
18167 U.S. Hwy. 19 N, #500
Clearwater, FL 34624
CLEAR CHANNEL COMMUNICATIONS IS AN EOE/MF.

CHR KLYV-FM

seeks morning show/or sidekick.
T & R's to Jeff Andrews
5490 Saratoga Rd.
Dubuque, IA 52002.

WCLG

AOR PM drive. '90s Rock attitude. Creative, edgy digital production. Develop your talent and personality in the Big East. Females and minorities encouraged. Possible APD.
T&R's to: Jeff Miller, WCLG,
P.O.Box 885, Morgantown, WV 26505

NEW COUNTRY K102

ANNOUNCER/MUSIC DIRECTOR

Chancellor Broadcasting's K102, Minnesota's leading Country station for 13 years, has rare openings for an announcer and an announcer/music director. Great station, great people, snow only six months a year. Great phone work, appearances a MUST. Country experience not essential. CHR and Hot AC jocks who want to perform, send a tape. T&R to:

GREGG SWEDBERG, PD, KEYE
7900 XERXES AVE. SO.,
BLOOMINGTON, MN 55431.
TEAM PLAYERS ONLY.
NO PHONE CALLS. EOE/EO

94.5 THE EDGE

THE NEW ROCK ALTERNATIVE

94.5/KDGE THE EDGE DALLAS seeks Music Director and part time On-Air Talent. Minimum three years in New Rock Alternative Format required. Please call for application.

Mary Young
Director/Human Resources,
KDGE Radio
214/770-7777
AN EQUAL OPPORTUNITY EMPLOYER.

50KW MARKET-LEADING COUNTRY STATION SEEKING 7 PM-MID. TALENT. GOOD PHONES. RATED MARKET EXPERIENCE. T&R TO:

TRAVIS JONES, WKKW
1251 EARL CORE ROAD,
MORGANTOWN, WV 26505
EOE

99.1 KGGI

Do you want to crack the mic on a station that covers Riverside, San Bernardino, North San Diego, Orange County and Los Angeles? Work for America's #1 Radio Only Broadcasting Company - Chancellor Broadcasting. 99-1 KGGI is looking for a more-than solid overnight jock to keep Southern California jammin' all night long. Weekend & Parttime air talent needed as well.
Rush your T&R to: Bob Lewis—PD
KGGI Radio - 2001 Iowa Ave. #200
Riverside, CA 92507
CHANCELLOR BROADCASTING IS AN E.O.E.

RCS

TELEPHONE SUPPORT SPECIALIST

Radio Computing Services is expanding. We have immediate, fulltime openings at our World Headquarters. Some travel is required.

If you are skilled in SELECTOR or other RCS products, and would enjoy working in a creative and casual setting, this is a job for you. Qualifications: bright radio pro, strong people skills and a great phone presence. Knowledge of computers, hardware, networks, or radio engineering expertise are big pluses.

RCS is an equal opportunity employer and we strongly encourage women and minorities to apply.

Send fax or e-mail your resume immediately. No phone calls, please.

KENNY LEE, CLIENT SERVICES
MANAGER
RADIO COMPUTING SERVICES INC.
TWO OVERHILL ROAD, SUITE 100
SCARSDALE, NEW YORK 10583
Fax: (914) 723-6651
email:
KENNYLEE@RCSWORKS.COM

HELP WANTED

KYQQ COUNTRY 106.5

KYQQ-FM, WICHITA SEEKS HOT COUNTRY MORNINGS, PHONES A MUST. SEND T&R TO:

DANE DANIEL, KYQQ
1632 S. MAIZE RD
WICHITA, KS 67212
EOE

WANTED: AMERICA'S BEST PD SUCCESSFUL CHR STATION SEEKS EXPERIENCED PROGRAM DIRECTOR / MORNING PERSONALITY. 2 YEARS+ STABLE TRACK RECORD PREFERRED. MUSIC KNOWLEDGE A MUST. PEOPLE SKILLS, COMPUTER LITERACY A PRIORITY. EOE. REFERENCES REQUIRED. CONFIDENTIALITY ASSURED. TAPE AND RESUME TO ME MERRIGAN, KKSS, 5301 CENTRAL NE, #1200, ALBUQUERQUE, NM 87108.

DIRECTOR - A&R

Fast growing International distributor of entertainment software requires qualified person to handle A&R selection and product development of compilation and reissue music packages in the following genres: country, MOR, oldies, rock n' roll, gospel, etc. Must have a creative approach to product concepts and must have extensive programming or sales knowledge of 1960 to current music with emphasis on 30+ age demographics.

Please send resume and salary history to:
SIMITAR ENTERTAINMENT, INC.
3850 ANNAPOLIS LANE, #140M
MINNEAPOLIS, MN 55447-5443
FAX 612-559-0210

WIN 98.5

KALAMAZOO, BATTLE CREEK'S COUNTRY
WIN 98.5 SEEKS AIR TALENT WITH STRONG PHONES AND PRODUCTION TO HEAT UP EVENINGS. RUSH TAPE AND RESUME TO:

PAMELA LACEY,
WIN 98.5
6021 S. WESTNEDGE
KALAMAZOO, MI 49002
WOMEN AND MINORITIES ENCOURAGED.
EOE

98Q

#1 Hot AC seeks regional talent for rare PM drive opening ... good phones, production, and remotes. No card readers. T&R: Bill Trotta, Program Director, 98Q
198 Main Street
Danbury, CT 06810
No phone calls please
EOE

PROMOTION DIRECTOR

GRAND RAPIDS' TOP RATED ADULT ROCK STATION, WLAV-FM HAS TWO OPENINGS. PROMOTIONS DIRECTOR AND AN ON AIR MUSIC DIRECTOR, BOTH SHOULD POSSESS BASIC COMPUTER KNOWLEDGE AND HAVE TREMENDOUS ORGANIZATIONAL SKILLS AND ALSO BE CREATIVE THINKERS. RUSH YOUR RESUME W/TAPE TO:
TONY GATES PD
c/o WLAV-FM
60 MONROE CENTER, N.W.
GRAND RAPIDS, MI 49503
NO PHONE CALLS PLEASE.
WLAV IS AN EQUAL EMPLOYMENT OPPORTUNITY EMPLOYER.

CLASSIFIED ADVERTISING RATES

HELP WANTED:

1 WEEK \$75.00 per inch
2 WEEKS \$65.00 per inch

POSITION WANTED AND BULLETIN BOARD:
\$45.00 per inch

BOX NUMBER: Add \$20.00

SERVICES:

1 WEEK \$75.00 per inch
6 WEEKS \$65.00 per inch
13 WEEKS \$60.00 per inch
26 WEEKS \$55.00 per inch
51 WEEKS \$50.00 per inch

DEADLINE (ALL CLASSIFIED):

Each Wednesday 3pm EST, 9 day leadtime.

• Classified ads are non-commissionable •

SUBMIT ALL AD COPY TO:

Laura Rivchun
Airplay Monitor Classified
1515 Broadway
New York, NY 10036

Phone: 212-536-5058
Fax: 212-536-5055

AIRPLAY Monitor® GREATEST GAINERS™

Broadcast Data Systems

Strongest Increase In Airplay This Week

MAINSTREAM

INCREASE
IN PLAYS

DONNA LEWIS • I Love You Always Forever (ATLANTIC)	+429
WZPL +27, WFBC +21, KHTT +21, WAPE +18, KALC +18, WKRQ +17, KMXV +16, KKRD +16, WPRO +16, KHFI +16	
DISHWALLA • Counting Blue Cars (A&M)	+419
WABB +22, WXKB +20, WPRO +20, WNVZ +20, WIXX +16, WFLZ +16, WAPE +15, WBZZ +15, WNTQ +14, WSSX +14	
MARIAH CAREY • Forever (COLUMBIA)	+275
KHOM +32, WBHT +20, WXLK +20, WWCK +19, WZJM +17, KRQQ +15, WFLZ +15, WKXJ +12, KHTO +11, WZST +10	
JEWEL • Who Will Save Your Soul (ATLANTIC)	+236
WPRO +28, WVKS +25, WFBC +21, WTWR +19, KKRD +19, WBZZ +18, WABB +17, WFLZ +14, WZST +12, WNVZ +12	
BLUES TRAVELER • But Anyway (A&M)	+213
WABB +25, WFBC +19, WZPL +19, WSTR +16, KKRD +15, KMXV +14, WYCR +14, WNNK +14, WZST +11, WXXX +9	
MAXI PRIEST FEATURING SHAGGY • That Girl (VIRGIN)	+212
WVSR +28, WHYI +14, WBZZ +14, KRBE +14, WXIS +11, WZYP +11, WPRO +11, WNVZ +11, WXXX +10, WKXJ +8	
PRIMITIVE RADIO GODS • Standing Outside A Broken Phone Booth... (ERGO/COLUMBIA)	+209
WDCG +29, KHTT +22, WKRQ +15, KKDM +14, WZJM +13, KHTY +12, WXLK +12, WNTQ +10, KKRD +9, WFLZ +9	
DAVE MATTHEWS BAND • So Much To Say (RCA)	+198
WXLK +14, WWCK +13, WYCR +12, KKDM +11, WSSX +11, WFBC +11, WBHT +10, WZYP +10, WVSR +10, WHTZ +9	
HOOTIE & THE BLOWFISH • Tucker's Town (ATLANTIC)	+187
WKKS +12, WWCK +12, WDDJ +12, WDCG +12, KKDM +11, WTWR +11, WSTW +9, WXLK +9, WHYI +9, KRBE +9	
ERIC CLAPTON • Change The World (REPRISE)	+176
WPRO +23, KJYO +22, WNVZ +17, WVSR +16, WZST +14, WTWR +14, WXIS +13, WSSX +13, WWST +12, WBHT +10	

RHYTHM-CROSSOVER

INCREASE
IN PLAYS

GHOST TOWN DJ'S • My Boo (SO SO DEF/COLUMBIA)	+277
KZZU +47, KZHT +33, KKFR +23, KGGI +22, KDGS +19, KDON +18, KKSS +18, KCAQ +16, KBXX +16, KUBE +16	
NEW EDITION • Hit Me Off (MCA)	+212
KZZU +45, KUBE +41, WJMH +33, WJMN +17, WWKX +15, KCAQ +11, KKFR +11, WERQ +10, KLUC +8, KBXX +7	
THE TONY RICH PROJECT • Like A Woman (LAFACE/ARISTA)	+89
KZHT +27, KKXX +19, KZFM +15, KCAQ +11, WJJS +10, KTFM +9, KPRR +3, KQKS +3, KDGS +2, KZZU +2	
GROOVE THEORY • Baby Luv (EPIC)	+83
KDGS +22, KKSS +20, KGGI +19, KKFR +17, WJJS +10, KDON +9, KPRR +7, KZFM +5, WHHH +4, WERQ +3	
KEITH SWEAT • Twisted (ELEKTRA/EEG)	+73
KZHT +32, KZFM +19, KGGI +17, KKXX +13, KDON +11, WPOW +11, KSFM +9, KCAQ +8, KKSS +8, KKFR +8	
LOS DEL RIO • Macarena (Bayside Boys Mix) (RCA)	+64
KUBE +45, KZHT +20, KKSS +16, KDGS +9, WJJS +7, WJMN +7, KZFM +2, KLUC +2, WBBM +2, WHHH +1	
WHITNEY HOUSTON • Why Does It Hurt So Bad (ARISTA)	+58
KKSS +28, KCAQ +12, WWKX +6, KZFM +5, KDGS +4, XHTZ +2, WPGC +1	
DONNA LEWIS • I Love You Always Forever (ATLANTIC)	+56
KTFM +28, KKFR +13, KBOS +9, WPOW +7, KZZU +2, KDGS +1, KSFM +1	
TOTAL • Kissin' You (BAD BOY/ARISTA)	+53
KUBE +36, KZFM +22, KGGI +22, WJMH +20, KKSS +15, WPOW +10, KPRR +8, KSFM +8, KDON +7, KLUC +3	
SHADES • Tell Me (I'll Be Around) (MOTOWN)	+44
KDGS +16, KZHT +8, XHTZ +6, WWKX +5, KBXX +4, KCAQ +2, KGGI +2, WERQ +1, WPGC +1	

VIDEO PLAYLISTS



1
VH
MUSIC FIRST

	TW	LW		TW	LW
1 Tracy Chapman, Give Me One Reason	32	31	16 Beck, Where It's At	18	15
2 Alanis Morissette, You Learn	28	33	17 Coolio, It's All The Way Live (Now)	18	25
3 Jewel, Who Will Save Your Soul	27	34	18 Primitive Radio Gods, Standing Outside A...	17	13
4 Eric Clapton, Change The World	25	23	19 LL Cool J, Loungin	17	10
5 Hootie & The Blowfish, Tucker's Town	24	27	20 Green Day, Walking Contradiction	15	13
6 Celine Dion, Because You Loved Me	21	36	21 Maxi Priest Feat. Shaggy, That Girl	15	11
7 Natalie Merchant, Jealousy	19	17	22 Butthole Surfers, Pepper	14	15
8 Gin Blossoms, Follow You Down	19	23	23 Dave Matthews Band, So Much To Say	14	0
9 Toni Braxton, You're Makin' Me High	18	8	24 Ozzy Osbourne, I Just Want You	13	15
10 Fugees, Killing Me Softly	18	16	25 2Pac (Feat. KC & JoJo), How Do U Want It	13	8
11 Collective Soul, The World I Know	17	19	26 Superdrag, Sucked Out	12	14
12 Gloria Estefan, Reach	16	19	27 Dishwalla, Counting Blue Cars	11	13
13 Joan Osborne, St. Teresa	14	17	28 Mariah Carey, Forever	11	9
14 Mariah Carey, Forever	14	19	29 Monica, Why I Love You So Much	10	11
15 Wallflowers, 6th Avenue Heartache	12	14	30 Quad City DJ's, C'mon N' Ride It (The Train)	10	3
16 George Michael, Fastlove	11	26	31 Goo Goo Dolls, Long Way Down	9	9
17 Bryan Adams, The Only Thing That Looks Good...	10	14	32 Me'shell Ndegeocello, Leviticus: Faggot	9	1
18 Dog's Eye View, Everything Falls Apart	10	9	33 Alice In Chains, Again	9	9
19 Mariah Carey, Always Be My Baby	9	8	34 Refreshments, Banditos	9	6
20 Blues Traveler, Run Around	7	7	35 Los Del Rio, Macarena (Bayside Boys Mix)	9	7
21 Patti Rothberg, Inside	6	6	36 R. Kelly, I Can't Sleep Baby (If I)	9	7
22 Sting, You Still Touch Me	6	10	37 Hole, Gold Dust Woman	9	0
23 Gloria Estefan, Turn The Beat Around	6	3	38 Porno For Pyros, Tahitian Moon	8	9
24 Jann Arden, Insensitive	6	9	39 311, Down	8	8
25 Eagles, Hotel California	6	2	40 Stabbing Westward, Shame	6	5
26 Seal, Don't Cry	6	6	41 Jewel, Who Will Save Your Soul	6	7
27 Duran Duran, The Reflex	6	0	42 Smashing Pumpkins, 1979	5	1
28 Vanessa Williams, Where Do We Go From Here	5	8	43 Wallflowers, 6th Avenue Heartache	5	3
29 Adam Clayton & Larry Mullen, Mission: Impossible	5	5	44 Total, Kissin' You	5	3
30 B-52's, Love Shack	4	3	45 Sponge, Wax Ecstatic	5	2
31 Counting Crows, Mr. Jones	4	3	46 Busta Rhymes Feat. Zhane, It's A Party	5	3
32 John Mellencamp, Wild Night	4	4	47 Joan Osborne, St. Teresa	5	0
33 Seal, Kiss From A Rose	4	5	48 Patti Rothberg, Inside	4	6
34 TLC, Waterfalls	4	3	49 Bush, Come Down	4	2
35 Joan Osborne, One Of Us	4	6	50 Soundgarden, Black Hole Sun	4	2

ADULT CONTEMPORARY

INCREASE
IN PLAYS

VANESSA WILLIAMS • Where Do We Go From Here (MERCURY)	+140
KMZQ +22, KTHH +15, WEZF +14, WLTF +11, KESZ +10, WRVF +9, WSHH +9, WLIT +8, WDEF +7, KISC +7	
MARIAH CAREY • Forever (COLUMBIA)	+117
WAHR +14, WLHT +14, WMGS +13, KLYF +10, KEZR +9, WARM +9, WLIF +8, WDEF +6, WLTE +6, WTFM +5	
WHITNEY HOUSTON • Why Does It Hurt So Bad (ARISTA)	+74
WLEV +14, WTFM +14, WGSY +11, WLAC +6, WLTS +6, WLIT +5, WDEF +5, WMGS +4, WLIF +4, WSLO +4	
JIM BRICKMAN • Hero's Dream (WINDHAM HILL)	+72
WAHR +14, KKCW +14, KISC +8, WLIT +6, WARM +6, WLIF +6, WDEF +5, WLTE +5, WDKO +4, WLTF +3	
ALANIS MORISSETTE • Ironic (MAVERICK/REPRISE)	+50
KBIG +20, WJOG +20, WLAC +19	

ADULT TOP 40

INCREASE
IN PLAYS

HOOTIE & THE BLOWFISH • Tucker's Town (ATLANTIC)	+149
WKDD +23, WSHE +23, WKQI +20, KKLO +16, WQLH +14, WMXV +11, WCSO +10, WWSN +8, WTMX +6, WZPK +6	
DONNA LEWIS • I Love You Always Forever (ATLANTIC)	+131
KJMZ +16, WYXR +15, WQLH +15, WKDD +14, WWSN +11, KFMB +11, WWMX +9, WKQI +8, WMC +8, KPLZ +7	
THE CRANBERRIES • Free To Decide (ISLAND)	+97
KKLQ +25, KHMV +20, WQLH +17, WKDD +11, WMC +10, WZPK +7, WKTI +6, WUSA +1	
MARIAH CAREY • Forever (COLUMBIA)	+94
WQLH +20, WWDE +19, WKDD +19, KSII +13, WVAF +11, WQAL +9, WWMX +8, WYYY +6, WMTX +6, KKOB +5	
DISHWALLA • Counting Blue Cars (A&M)	+73
KKLQ +29, WMC +20, KSTZ +18, WUSA +10, WBMX +9, WWMX +5, WKTI +3, KDMX +1	

ON JULY 22nd PLAN TO GET
"SO HARD"!

THE NEXT HIT FROM VOICE OF THE BEEHIVE

CONTACT: JACK ASHTON & RENE MAGALLON/ DISCOVERY RECORDS 800-377-9620 EXT. 214

© 1996 DISCOVERY RECORDS



Playlists supplied by Broadcast Data Systems' Radio Track service. Stations selected from panel of leading broadcasters in 125 radio markets, electronically monitored 24 hours a day, 7 days a week. Songs ranked by number of plays in monitored week.

Z100 PD: Tom Poleman APD: Ryan Chase MD: Paul 'Cubby' Bryant. Table with 40 rows of song titles and ratings.

KIIS PD: John Cook APD/MD: Tracy Austin. Table with 40 rows of song titles and ratings.

Q102 OM: Dave Allan PD: Glenn Kalina MD: DeDe McGuire. Table with 40 rows of song titles and ratings.

KISS 108 PD: John Ivey MD: Tad Bonnie. Table with 40 rows of song titles and ratings.

KISS 106.1 APD/MD: Mr. Ed Lambert. Table with 40 rows of song titles and ratings.

KRBE PD: John Peake APD: Scott Sparks MD: Jay Michaels. Table with 40 rows of song titles and ratings.

KDWB PD: Dan Kiele APD/MD: Rob Morris. Table with 40 rows of song titles and ratings.

STAR 94 PD: Kevin Peterson MD: J.R. Ammons. Table with 40 rows of song titles and ratings.

B94 PD: Keith Clark APD: David Edgar MD: John Claine. Table with 40 rows of song titles and ratings.

WFLZ PD: B.J. Harris APD: Jeff Kapugi MD: Tom Steele. Table with 40 rows of song titles and ratings.

WPST VP/Prog.: Michelle Stevens PD: Dave McKay. Table with 40 rows of song titles and ratings.

Y100 PD: Rob Roberts MD: Al Chio. Table with 40 rows of song titles and ratings.

KISS 95.7 PD: Jay Beau Jones MD: Dave Vayda. Table with 40 rows of song titles and ratings.

WNCI PD: John Dimick. Table with 40 rows of song titles and ratings.

WTIC OM: Bill Stairs MD: David Simpson. Table with 40 rows of song titles and ratings.

Q102 PD: Jimmy Steal APD: Race Taylor MD: Brian Douglas. Table with 40 rows of song titles and ratings.

PRO-FM PD: Chris Shebel MD: Tony Mascaro. Table with 40 rows of song titles and ratings.

Q104 PD: Michael St. John MD: Tommy Mattern. Table with 40 rows of song titles and ratings.

nowhere to go



from the new album
your little secret



produced by Hugh Padgham and Melissa Etheridge
engineered by Hugh Padgham
mixed by Greg Goldman
managed by U. J. Leopold



© 1996 Island Records, Inc. All Rights Reserved.

POWER PLAYLISTS

For Week Ending July 7, 1996



Playlists supplied by Broadcast Data Systems. Radio Track service. Stations selected from panel of leading broadcasters in 125 radio markets, electronically monitored 24 hours a day, 7 days a week. Songs ranked by number of plays in monitored week.



Table for G105 station, listing songs and artists such as Alanis Morissette, Oasis, Jars Of Clay, etc.

Table for Z100 station, listing songs and artists such as Alanis Morissette, Brandy, Jewel, etc.

Table for ALICE 106 station, listing songs and artists such as Everclear, Dishwalla, Tracy Chapman, etc.

Table for THE RIVER station, listing songs and artists such as Adam Clayton & Larry Mullen, Jann Arden, etc.

Table for JAMMIN' 92 station, listing songs and artists such as Donna Lewis, Everything But The Girl, etc.

Table for XL106.7 station, listing songs and artists such as Alanis Morissette, Donna Lewis, etc.

Table for KJ103 station, listing songs and artists such as Alanis Morissette, La Bouche, etc.

Table for KISS 98.5 station, listing songs and artists such as Celine Dion, Fugees, etc.

Table for WZPL station, listing songs and artists such as Fugees, Alanis Morissette, etc.

Table for KISS 95.1 station, listing songs and artists such as Fugees, Alanis Morissette, etc.

Table for Z93 station, listing songs and artists such as Fugees, Alanis Morissette, etc.

Table for FLY 92 station, listing songs and artists such as Robert Miles, Fugees, etc.

Table for Z104 station, listing songs and artists such as Fugees, Celine Dion, etc.

Table for MIX 93.3 station, listing songs and artists such as Alanis Morissette, Brandy, etc.

Table for MIX 107.5 station, listing songs and artists such as Collective Soul, The Tony Rich Project, etc.

Table for WIXX station, listing songs and artists such as Robert Miles, Alanis Morissette, etc.

Table for WKRZ station, listing songs and artists such as Alanis Morissette, Kiss, etc.

Table for WVKS station, listing songs and artists such as Donna Lewis, Alanis Morissette, etc.



***** AIRPOWER *****
(Minimum 1500 detections for the first time)

Total Plays/Gain **Total Plays/Gain**

MARIAH CAREY 1622/275
Forever (Columbia)
Total Stations: 74/Chart Move: 20-18
Heavy (40+ plays): 6 KHOM, KRQQ, WPRO, WRVQ, WWCK, WZNY
Medium (20-39): 32 KHFI, KHTO, KIIS, KKRD, KKRZ, KMXV, KQKQ, KWMX, WABB, WBHT, WBZZ, WFBC, WFHN, WFLZ, WGTZ, WHYI, WIOQ, WKCI, WKSE, WKXJ, WMXQ, WNOK, WPXY, WSNX, WSTR, WTVR, WWSR, WXLK, WXXL, WZJM, WZPL, WZST
Light (Under 20): 36
New Airplay This Week: 2 WNNK, WXIS

DONNA LEWIS 1599/429
I Love You Always Forever (Atlantic)
Total Stations: 67/Chart Move: 25-19
Heavy (40+): 8 KRBE, KRQQ, WFLZ, WHYI, WKRQ, WVKX, WXXL, WZJM
Medium (20-39): 33 KDWB, KHFI, KHOM, KHTT, KKMJ, KKRD, KKRZ, WABE, WAPF, WDJX, WFBC, WGTZ, WHOT, WIXX, WKBO, WKCI, WKRZ, WMXQ, WNCI, WNKS, WNTQ, WNVZ, WPRO, WSNX, WSSX, WTVR, WWSR, WWCK, WXIS, WXXB, WZNY, WZPL, WZST
Light (Under 20): 26
New Airplay This Week: 14 KALC, KHTT, KIIS, KJYO, KMXV, KQKQ, KWMX, WFBC, WNNK, WSTW, WVIC, WXLK, WYCR, WZPL

AIRPOWER BOUND

Total Plays/Gain

DISHWALLA 1481/419
Counting Blue Cars (A&M)
Total Stations: 77/Chart Move: 30-21
Heavy (40+ plays): 8 KALC, KHTY, KKDM, KRBE, WDCG, WDDJ, WPST, WZPL
Medium (20-39): 22 KHTT, KUTO, WABB, WBHT, WFLZ, WHTZ, WKRO, WKRZ, WNNK, WNOK, WNTQ, WNVZ, WPRO, WSNX, WSSX, WVIC, WWSR, WWCK, WXIS, WXXB, WZNY, WZST
Light (Under 20): 47
New Airplay This Week: 14 KKRZ, KMXV, KQKQ, KWMX, WAEB, WAPE, WBZZ, WHYI, WIXX, WKSS, WNVZ, WPRO, WXXB, WXXL

TONI BRAXTON 1433/121
You're Makin' Me High (LaFace/Arista)
Total Stations: 71/Chart Move: 22-22
Heavy (40+): 13 WBZZ, WFBC, WFHN, WFLY, WNVZ, WSSX, WTVR, WVKX, WWSR, WXIS, WXXX, WYCR, WZPL
Medium (20-39): 22 KHOM, KHTO, KHTT, KJYO, KKMJ, KKRZ, KMXV, KQKQ, WFMF, WHYI, WIOQ, WKSE, WKXJ, WLAN, WNNK, WRVQ, WSTR, WWSR, WXLK, WZNY, WZST, WZYP
Light (Under 20): 36
New Airplay This Week: 2 WAPE, WKSS

BONE THUGS-N-HARMONY 1381/36
Tha Crossroads (Ruthless/Relativity)
Total Stations: 67/Chart Move: 21-23
Heavy (40+): 7 KBFM, KHFI, KHOM, KHTT, WRVQ, WTVR, WXIS
Medium (20-39): 28 KDWB, KHTO, KIIS, KJYO, KQKQ, KRQQ, WBZZ, WFBC, WFHN, WFLZ, WGTZ, WIOQ, WIXX, WKBO, WKRO, WKSE, WKXJ, WNKS, WNOK, WSNX, WVKX, WWSR, WWSR, WXXB, WXXL, WXXX, WZNY, WZPL
Light (Under 20): 32
New Airplay This Week: 5 WABB, WHYI, WKRZ, WNVZ, WYCR

MAXI PRIEST FEAT. SHAGGY 1283/212
That Girl (Virgin)
Total Stations: 69/Chart Move: 29-25
Heavy (40+): 1 WPRO
Medium (20-39): 32 KHKS, KHTO, KHTT, KIIS, KKRZ, KWMX, WABB, WAPE, WBHT, WBZZ, WFHN, WFLY, WFLZ, WHYI, WKBO, WKSE, WKXJ, WMXQ, WNOK, WNTQ, WNVZ, WRVQ, WSNX, WSSX, WSTW, WVKX, WWSR, WXIS, WXXX, WYCR, WZJM, WZPL
Light (Under 20): 36
New Airplay This Week: 4 KRBE, WLAN, WWSR, WZYP

QUAD CITY DJ'S 916/134
C'mon 'n Ride It (Quadrasound/Big Beat/Atlantic)
Total Stations: 64/Chart Move: 36-32
Heavy (40+): 4 KBFM, KHOM, KHTT, WIOQ

Medium (20-39): 21 KDWB, KHFI, KHKS, KIIS, KKRZ, KQKQ, WBHT, WFHN, WFLY, WGTZ, WHYI, WKRQ, WKSE, WNVZ, WRVQ, WXIS, WXXB, WXXL, WZJM, WZNY, WZPL
Light (Under 20): 39
New Airplay This Week: 5 KHTO, KKMJ, WNKS, WTVR, WWSR

BLESSID UNION OF SOULS 884/35
All Along (EMI)
Total Stations: 63/Chart Move: 35-34
Heavy (40+): 1 WNCI
Medium (20-39): 21 KHTO, KJYO, KQKQ, WAEB, WBZZ, WFBC, WIXX, WKRO, WKXJ, WNNK, WPRO, WPXY, WTVR, WWSR, WWCK, WXIS, WXXL, WYCR, WZJM, WZPL, WZST
Light (Under 20): 41

PRIMITIVE RADIO GODS 812/209
Standing Outside A Broken Phone Booth... (Ergo/Columbia)
Total Stations: 46/Chart Move: Debut 36
Heavy (40+): 5 KALC, KHTY, WDCG, WHTZ, WPST
Medium (20-39): 8 KHTT, KKDM, KRBE, WBHT, WFLZ, WKBO, WKRO, WZST
Light (Under 20): 33
New Airplay This Week: 7 KKRD, WABB, WKCI, WNKS, WNTQ, WXLK, WZJM

NO MERCY 756/81
Where Do You Go (Arista)
Total Stations: 56/Chart Move: 40-37
Heavy (40+): 2 KBFM, WFHN
Medium (20-39): 16 KHFI, KHTO, KHTT, KJYO, KRQQ, WFLY, WFLZ, WHYI, WNNK, WPRO, WSSX, WWCK, WXIS, WXXL, WYCR, WZPL
Light (Under 20): 38
New Airplay This Week: 2 WKXJ, WXXS

LISA LOEB & NINE STORIES 752/48
Waiting For Wednesday (Geffen)
Total Stations: 66/Chart Move: 39-38
Heavy (40+): 1 WNVZ
Medium (20-39): 14 KHTO, KRBE, WKRQ, WKRZ, WKSE, WKXJ, WNNK, WVIC, WWCK, WXIS, WXXL, WYCR, WZJM, WZST
Light (Under 20): 51
New Airplay This Week: 2 WBHT, WPRO

HOOTIE & THE BLOWFISH 739/187
Tucker's Town (Atlantic)
Total Stations: 54/Chart Move: Debut 39
Heavy (40+): 1 WSSX
Medium (20-39): 14 KUTQ, WBHT, WFBC, WHYI, WNOK, WPST, WRVQ, WSTR, WVIC, WTVR, WVKX, WXLK, WZNY, WZST
Light (Under 20): 39
New Airplay This Week: 10 KKDM, KRBE, WAEB, WDDJ, WKSS, WSNX, WSTW, WWCK, WXXS, WZJM

MOST NEW AIRPLAY THIS WEEK

	No. Of Stations
DISHWALLA <i>Counting Blue Cars (A&M)</i>	14
DONNA LEWIS <i>I Love You Always Forever (Atlantic)</i>	14
THE CRANBERRIES <i>Free To Decide (Island)</i>	12
DAVE MATTHEWS BAND <i>So Much To Say (RCA)</i>	11
THE TONY RICH PROJECT <i>Like A Woman (LaFace/Arista)</i>	11

CHART BOUND

Total Plays/Gain

THE BADLEES 639/63
Angeline Is Coming Home (Polydor/A&M)
Total Stations: 59
Heavy (40+): 0
Medium (20-39): 13 KUTQ, WABB, WDCG, WFBC, WFMF, WKRZ, WKXJ, WPRO, WPST, WVKX, WWCK, WXLK, WZST
Light (Under 20): 46

THE NIXONS 634/68
Sister (MCA)
Total Stations: 61
Heavy (40+): 3 KRBE, KUTO, WHTZ
Medium (20-39): 8 KHTY, KJYO, WBHT, WDCG, WKRZ, WPST, WSSX, WXIS
Light (Under 20): 50
New Airplay This Week: 1 WAEB

THE CRANBERRIES 561/172
Free To Decide (Island)
Total Stations: 43
Heavy (40+): 0
Medium (20-39): 10 KHTY, KKDM, KUTO, KWMX, WDCG, WHTZ, WNOK, WPST, WXXS, WYCR
Light (Under 20): 33
New Airplay This Week: 12 KHTT, KJYO, WDDJ, WFBC, WKXJ, WNKS, WNNK, WSNX, WSTW, WXLK, WXXX, WZJM

THE SMASHING PUMPKINS 489/112
Tonight, Tonight (Virgin)
Total Stations: 39
Heavy (40+): 1 WBHT
Medium (20-39): 8 KHTY, KKDM, WDCG, WDDJ, WHTZ, WKRO, WPST, WXIS
Light (Under 20): 30
New Airplay This Week: 7 KMXV, KWMX, WABB, WKXJ, WNNK, WXLK, WXXL

THE TONY RICH PROJECT 428/174
Like A Woman (LaFace/Arista)
Total Stations: 37
Heavy (40+): 0
Medium (20-39): 8 KDWB, KKRZ, WSNX, WSTR, WXIS, WYCR, WZNY, WZPL
Light (Under 20): 29
New Airplay This Week: 11 KWMX, WABB, WFBC, WFHN, WFLZ, WGTZ, WNOK, WWCK, WXXS, WZJM, WZYP

GARBAGE 402/100
Stupid Girl (Almo Sounds/Geffen)
Total Stations: 35
Heavy (40+): 0
Medium (20-39): 7 KHTY, WBHT, WHTZ, WKXJ, WPST, WXIS, WXXX
Light (Under 20): 28
New Airplay This Week: 8 KHTT, KRBE, KUTO, WABB, WSTW, WTVR, WXLK, WYCR

FUGEES 385/8
No Woman, No Cry (Ruffhouse/Columbia)
Total Stations: 14
Heavy (40+): 4 KUTO, WIOQ, WKSE, WPST
Medium (20-39): 5 KHTT, KHTY, WHTZ, WRVQ, WZJM
Light (Under 20): 5

PLANET SOUL 381/25
Set U Free (Strictly Rhythm)
Total Stations: 35
Heavy (40+): 2 KHOM, WAPE
Medium (20-39): 4 KHKS, KHTT, WFLZ, WNKS
Light (Under 20): 29

TINA ARENA 380/136
Show Me Heaven (Epic)
Total Stations: 45
Heavy (40+): 0
Medium (20-39): 6 KQKQ, WMXQ, WNVZ, WYCR, WNVZ, WZST
Light (Under 20): 39
New Airplay This Week: 7 KHTO, WDJX, WGTZ, WNCI, WWSR, WWCK, WXXS

HOOTIE & THE BLOWFISH 364/50
I Go Blind (Reprise)
Total Stations: 20
Heavy (40+): 3 KRQQ, WBHT, WVIC
Medium (20-39): 4 KALC, WAPE, WNTQ, WZJM
Light (Under 20): 13

R. KELLY 333/74
I Can't Sleep Baby (If I) (Jive)
Total Stations: 24
Heavy (40+): 0
Medium (20-39): 5 KHOM, WFHN, WIOQ, WKSE, WNVZ
Light (Under 20): 19
New Airplay This Week: 4 KHFI, WGTZ, WNNK, WYCR

★ BLUES TRAVELER 325/213
But Anyway (A&M)
Total Stations: 26
Heavy (40+): 1 WPST
Medium (20-39): 5 KKDM, WABB, WFBC, WXIS, WXXX
Light (Under 20): 20
New Airplay This Week: 10 KKRD, KMXV, KUTO, WFBC, WHTZ, WNNK, WSTR, WYCR, WZPL, WZST

★ DAVE MATTHEWS BAND 320/198
So Much To Say (RCA)
Total Stations: 38
Heavy (40+): 0
Medium (20-39): 4 WDCG, WHTZ, WPST, WZYP
Light (Under 20): 34
New Airplay This Week: 11 KJYO, KKDM, WABB, WBHT, WFBC, WKRZ, WSSX, WWSR, WWCK, WXLK, WYCR

BUTTHOLE SURFERS 278/96
Pepper (Capitol)
Total Stations: 37
Heavy (40+): 0
Medium (20-39): 5 KHHT, KHTY, KRBE, WHTZ, WPST
Light (Under 20): 32
New Airplay This Week: 5 WKXJ, WNKS, WNOK, WNTQ, WWCK

METALLICA 275/41
Until It Sleeps (Elektra/EEG)
Total Stations: 39
Heavy (40+): 0
Medium (20-39): 3 KUTQ, WDDJ, WKXJ
Light (Under 20): 36
New Airplay This Week: 3 WABB, WBHT, WDCG

NO DOUBT 274/56
Spiderwebs (Trauma/Interscope)
Total Stations: 26
Heavy (40+): 1 KKDM
Medium (20-39): 5 KHTY, WABB, WHTZ, WPST, WXIS
Light (Under 20): 20
New Airplay This Week: 1 WZNY

GOO GOO DOLLS 264/9
Long Way Down (Metal Blade/Warner Bros.)
Total Stations: 25
Heavy (40+): 0
Medium (20-39): 2 KHTY, WPST
Light (Under 20): 23
New Airplay This Week: 3 KKRD, WDDJ, WTVR

THE REFRESHMENTS 253/40
Banditos (Mercury)
Total Stations: 23
Heavy (40+): 0
Medium (20-39): 2 KHTY, WDDJ
Light (Under 20): 21
New Airplay This Week: 2 KJYO, WKXJ

OASIS 239/65
Don't Look Back In Anger (Epic)
Total Stations: 26
Heavy (40+): 3 KHTY, WHTZ, WPST
Medium (20-39): 2 KKDM, WKRQ
Light (Under 20): 21
New Airplay This Week: 2 WDCG, WXIS

★ ALANIS MORISSETTE 167/61
Head Over Feet (Maverick/Reprise)
Total Stations: 6
Heavy (40+): 2 KALC, WDCG
Medium (20-39): 1 WHTZ
Light (Under 20): 3
New Airplay This Week: 1 WPST

AMBER 159/10
This Is Your Night (Tommy Boy)
Total Stations: 30
Heavy (40+): 0
Medium (20-39): 3 WFHN, WKSE, WZJM
Light (Under 20): 27

LIVIN' JOY 141/3
Dreamer (MCA)
Total Stations: 22
Heavy (40+): 1 WKSE
Medium (20-39): 1 KBFM
Light (Under 20): 20

Airpower awarded to those records which attain 1500 detections for the first time. New airplay lists those stations registering six or more detections per week on a record for the first time. ★ Initial impact: records appearing on this page for the first time.

SONG ACTIVITY REPORTS

For Week Ending July 7, 1996



Detailed song tracking information for the last 3 weeks for all songs showing increased play this week. Total plays and gain do not include video play. Markets listed in order of population.

JANN ARDEN 2145/137 Insensitive (A&M) Total Stations: 78 Chart Move: 14-10

TINA ARENA 380/136 Show Me Heaven (Epic) Total Stations: 45

THE BADLEES 639/63 Angelina Is Coming Home (Polydor/A&M) Total Stations: 59

BLESSID UNION OF SOULS 884/35 All Along (EMI) Total Stations: 63 Chart Move: 35-34

BLUES TRAVELER 325/213 But Anyway (A&M) Total Stations: 26

BONE THUGS-N-HARMONY 1381/36 The Crossroads (Ruthless/Relativity) Total Stations: 67 Chart Move: 21-23

TONI BRAXTON 1433/121 You're Makin' Me High (LaFace/Arista) Total Stations: 71 Chart Move: 22-22

MARIAH CAREY 1622/275 Forever (Columbia) Total Stations: 74 Chart Move: 20-18

ERIC CLAPTON 2006/176 Change The World (Reprise) Total Stations: 77 Chart Move: 16-13

THE CRANBERRIES 561/172 Free To Decide (Island) Total Stations: 43

DISHWALLA 1481/419 Counting Blue Cars (A&M) Total Stations: 77 Chart Move: 30-21

FUGEES 385/8 No Woman, No Cry (Ruffhouse/Columbia) Total Stations: 14

GARBAGE 402/100 Stupid Girl (Almo Songs/Geffen) Total Stations: 35

HOOTIE & THE BLOWFISH 364/50 I Go Blind (Reprise) Total Stations: 20

HOOTIE & THE BLOWFISH 739/187 Tucker's Town (Atlantic) Total Stations: 54 Chart Move: Debut 39

AIR RHYTHM-CROSSOVER COMPETITION SEVEN

First Place

CAMILLE CASHWELL
92Q / Baltimore, MD

"Wow, what a career high and honor to finish in first place. Thanks to Bob Brady and the entire AIR staff. This competition challenges programmers to be on the cutting edge of the industry and really think about the music we play. Thanks to Cathy Hughes for the opportunity and great influence, and to my #1 supporter, my mom. Thanks to Russ Allen and Kristie Weimar for teaching me so much about programming, and special thanks to the entire 92Q staff for their talent and dedication."



GRAND PRIZE

1996 BMW 318i Convertible

Camille's great instincts for hearing hit music and conscientious participation have paid off.

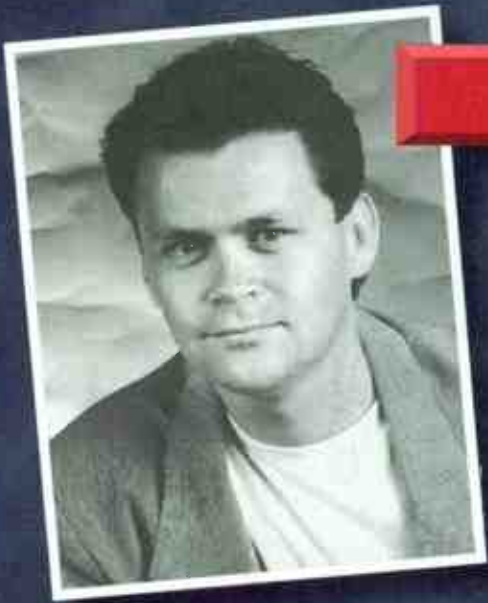
She is the winner of our seventh Rhythm-Crossover competition. Congratulations to Camille and all of the Top 30 winners.

A C T I V E I N D U S T R Y R E S E A R C H

AIR

Congratulates All Our Rhythm-Crossover Winners

Second Place



MICHAEL MARTIN
KYLD/San Francisco, CA
\$ 6,250

"Thanks to Brady, Jonas and everyone at AIR for keeping me up on all the music. AIR is the ONLY source for accurate information minus all the hype. Thanks for keeping it all about the music. You guys are the best."

T
I
E

"Every Monday, Brady gives me the best five minute musical education out there. This is an innovative way to find out how songs are really doing without all the hype. It's a real honor to place in the top ten. Thanks for the opportunity to participate."



THE JANITOR
KTFM/San Antonio, TX
\$ 6,250

FOURTH PLACE \$3,000



CADILLAC JACK
WJMN/Boston, MA

FIFTH PLACE \$2,500



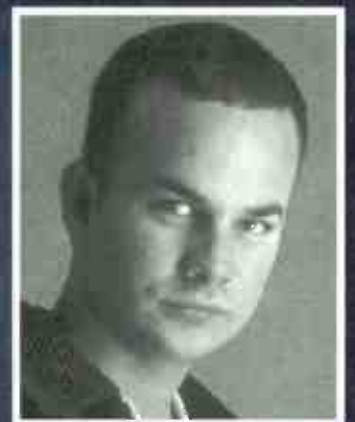
MICHAEL HAYES
KJMN/Denver, CO

SIXTH PLACE \$2,000



CAT COLLINS
WJMN/Boston, MA

SEVENTH PLACE \$1,750



JOEY ARBAGEY
KMEL/San Francisco, CA

EIGHTH PLACE \$1,500



MARK FEATHER
KJMN/ Denver, CO

NINTH PLACE \$1,250



CHARLIE MAXX
KZFM / Corpus Christi, TX

TENTH PLACE \$1,000



ROB SCORPIO
KBXX / Houston, TX

AIR's current Rhythm-Crossover Competition, with a Grand Prize of a new BMW Z3 roadster, is currently underway. Winners will be announced in February 1997.

Winners 11 thru 30 share in a \$10,000 cash pool



11

WOKIEE
OC104 / Ocean City, MD



12

CHARLES CHAVEZ
Formerly at
KTFM / San Antonio, TX



13

PETE JONES
HOT105 / Modesto-Merced, CA



14

HAROLD AUSTIN
KKBT / Los Angeles, CA



15

ERIK BRADLEY
WBBM / Chicago, IL



16

MICHELLE S.
KMEL/San Francisco, CA



16

TIE

SHELLIE HART
Formerly at
KUBE / Seattle, WA



18

MIKEY FREEMAN
B95 / Fresno, CA



19

MARY K.
WJMH / Greensboro, NC



20

ALBIE DEE
WPGC / Washington, DC



21

DON PARKER
KKFR/Phoenix, AZ



22

JOHN DICKENSON
KJMN / Denver, CO



23

JAY STEVENS
WPGC/Washington, DC



24

CARL FRYE
WHHH / Indianapolis, IN



25

MARK ADAMS
B95 / Fresno, CA



26

GERONIMO
KZHT/Salt Lake City, UT



27

LISA VASQUEZ
Z90 / Chula Vista, CA



28

KEVIN "KOOLIN" FOX
WIBB / Macon, GA



29

JENNIFER WILDE
KDON/Salinas-Monterey, CA



30

LUCY B.
Q105 / Oxnard-Ventura, CA

FIRST PLACE \$2,500



CAMILLE CASHWELL
92Q / Baltimore, MD

SECOND PLACE \$1,500



MICHAEL HAYES
KJMN / Denver, CO

THIRD PLACE \$1,000



MARK FEATHER
KJMN / Denver, CO

AIR
2nd Half
WINNERS

SONG ACTIVITY REPORTS

For Week Ending July 7, 1996



JEWEL 2429/236

Who Will Save Your Soul (Atlantic)

Total Stations: 82 Chart Move: 10-5

Table with columns: City, Station, Airplay, and IP for Jewel's 'Who Will Save Your Soul'.

R. KELLY 333/74

I Can't Sleep Baby (If I) (Jive)

Total Stations: 24 Chart Move: 25-19

Table with columns: City, Station, Airplay, and IP for R. Kelly's 'I Can't Sleep Baby (If I)'.

DONNA LEWIS 1599/429

I Love You Always Forever (Atlantic)

Total Stations: 67 Chart Move: 25-19

Table with columns: City, Station, Airplay, and IP for Donna Lewis's 'I Love You Always Forever'.

LISA LOEB & NINE STORIES 752/48

Waiting For Wednesday (Geffen)

Total Stations: 66 Chart Move: 39-38

Table with columns: City, Station, Airplay, and IP for Lisa Loeb & Nine Stories's 'Waiting For Wednesday'.

LOS DEL RIO 2387/62

Macarena (Bayside Boys Mix) (RCA)

Total Stations: 77 Chart Move: 8-6

Table with columns: City, Station, Airplay, and IP for Los Del Rio's 'Macarena'.

DAVE MATTHEWS BAND 320/198

So Much To Say (RCA)

Total Stations: 38 Chart Move: 12-9

Table with columns: City, Station, Airplay, and IP for Dave Matthews Band's 'So Much To Say'.

NATALIE MERCHANT 2153/129

Jealousy (Elektra/EEG)

Total Stations: 80 Chart Move: 12-9

Table with columns: City, Station, Airplay, and IP for Natalie Merchant's 'Jealousy'.

THE NIXONS 634/68

Sister (MCA)

Total Stations: 61 Chart Move: 12-9

Table with columns: City, Station, Airplay, and IP for The Nixons's 'Sister'.

NO MERCY 756/81

Where Do You Go (Arista)

Total Stations: 56 Chart Move: 40-37

Table with columns: City, Station, Airplay, and IP for No Mercy's 'Where Do You Go'.

MAXI PRIEST FEAT. SHAGGY 1283/212

That Girl (Virgin)

Total Stations: 69 Chart Move: 29-25

Table with columns: City, Station, Airplay, and IP for Maxi Priest & Shaggy's 'That Girl'.

PLANET SOUL 381/205

Set U Free (Strictly Rhythm)

Total Stations: 35 Chart Move: 29-25

Table with columns: City, Station, Airplay, and IP for Planet Soul's 'Set U Free'.

PRIMITIVE RADIO GODS 812/209

Standing Outside A Broken Phone Booth... (Ergo/Columbia)

Total Stations: 46 Chart Move: 29-25

Table with columns: City, Station, Airplay, and IP for Primitive Radio Gods's 'Standing Outside A Broken Phone Booth...'.

QUAD CITY DJ'S 916/134

C'mon N' Ride It (The Train) (Quadrasound/Big Beat Atlantic)

Total Stations: 64 Chart Move: 36-32

Table with columns: City, Station, Airplay, and IP for Quad City DJ's's 'C'mon N' Ride It'.

THE TONY RICH PROJECT 428/174

Like A Woman (LaFace/Arista)

Total Stations: 37 Chart Move: 12-9

Table with columns: City, Station, Airplay, and IP for The Tony Rich Project's 'Like A Woman'.

THE SMASHING PUMPKINS 489/112

Tonight, Tonight (Virgin)

Total Stations: 39 Chart Move: 12-9

Table with columns: City, Station, Airplay, and IP for The Smashing Pumpkins's 'Tonight, Tonight'.



POWER PLAYLISTS

For Week Ending July 7, 1996



Playlists supplied by Broadcast Data Systems. Radio Track service. Stations selected from panel of leading broadcasters in 125 radio markets, electronically monitored 24 hours a day, 7 days a week. Songs ranked by number of plays in monitored week.

HOT 97 PD: Steve Smith APD/MD: Tracy Cloherty MD: Deneen Womack. List of songs and ratings for station WQHT New York.

POWER 106 PD: Michelle Mercer APD/MD: Bruce St. James AMD: Pete Manriquez. List of songs and ratings for station KPWR Los Angeles.

B96 PD: Todd Cavanah MD: Erik Bradley. List of songs and ratings for station WBBM Chicago.

WKTU PD: Frankie Blue MD: Andy Shane. List of songs and ratings for station WKTU New York.

JAM'N 94.5 PD: Cadillac Jack MD: Cat Collins. List of songs and ratings for station WJMN Boston.

KMEL PD: Michelle Santosuosso MD: Joey Arbage. List of songs and ratings for station KMEL San Francisco.

WILD 107 PD: Michael Martin AMD: Jose Mein. List of songs and ratings for station KYLD San Francisco.

WPGC PD: Jay Stevens APD: Bob Holmcrans MD: G. Sharp. List of songs and ratings for station WPGC Washington, DC.

THE BOX PD: Rob Scorpio MD: Greg Head. List of songs and ratings for station KBXX Houston.

POWER 96 Interim PD: Kid Curry Interim MD: Phil Jones. List of songs and ratings for station WPOW Miami.

KUBE PD: Mike Tierney MD: Lindsey Cipic. List of songs and ratings for station KUBE Seattle.

POWER 92 PD: Don Parker MD: Brian Douglas. List of songs and ratings for station KKFR Phoenix.

FM102 PD: Bob West MD: Trejo. List of songs and ratings for station KSFM Sacramento.

KGGI PD: Bob Lewis APD/MD: Michael Steele. List of songs and ratings for station KGGI Riverside.

Z90 OM/PD: Lisa Vazquez APD/MD: Jeff Nelson. List of songs and ratings for station XHTZ San Diego.

KTFM PD: Cliff Tredway MD: Charlie Huero. List of songs and ratings for station KTFM San Antonio.

92Q PD: Tom Calococci APD: Konan MD: Camille Cashwell. List of songs and ratings for station WERQ Baltimore.

KS104 PD: Cindy Rose APD: Ricky O. List of songs and ratings for station KQKS Denver.



★ ★ ★ **AIRPOWER** ★ ★ ★
(Minimum 600 detections for the first time)

NO RECORDS QUALIFIED FOR AIRPOWER THIS WEEK

AIRPOWER BOUND

Plays/Gain

GROOVE THEORY 422/83

Baby Luv (Epic)

Total Stations: 23/Chart Move: 31-21
Heavy (40+): 2 KDON, WJMN
Medium (20-39): 9 KBOS, KCAQ, KDGS, KGGI, KKSS, KZHT, WHHH, WJJS, XHTZ
Light (Under 20): 12
New Airplay This Week: 3 KKFR, KKSS, KPRR

NAS 400/16

If I Ruled The World (Columbia)

Total Stations: 25/Chart Move: 27-22
Heavy (40+): 3 KPWR, KYLD, WPGC
Medium (20-39): 5 KKSS, KMEL, WERQ, WJMH, WQHT
Light (Under 20): 17
New Airplay This Week: 3 KTFM, WHHH, WPOW

LL COOL J 349/33

Loungin (Def Jam/Mercury)

Total Stations: 24/Chart Move: 37-28
Heavy (40+): 1 KKSS
Medium (20-39): 8 KCAQ, KLUC, KMEL, KYLD, WHHH, WQHT, WWKX, XHTZ
Light (Under 20): 15
New Airplay This Week: 3 KDON, KGGI, KPWR

★ **NEW EDITION 261/212**

Hit Me Off (MCA)

Total Stations: 15/Chart Move: Debut 37
Heavy (40+): 2 KUBE, KZZU
Medium (20-39): 3 WERQ, WJMH, WPGC
Light (Under 20): 10
New Airplay This Week: 8 KBXX, KCAQ, KKFR, KLUC, KZZU, WJMH, WJMN, WWKX

THE TONY RICH PROJECT 260/89

Like A Woman (LaFace/Arista)

Total Stations: 18/Chart Move: Debut 38
Heavy (40+): 1 KZHT
Medium (20-39): 4 KCAQ, KDGS, KGGI, KZFM

Light (Under 20): 13
New Airplay This Week: 3 KKXX, KTFM, WJJS

NO MERCY 235/13

Where Do You Go (Arista)

Total Stations: 13/Chart Move: Debut 39
Heavy (40+): 2 KTFM, WWKX
Medium (20-39): 3 KDGS, WBBM, WPOW
Light (Under 20): 8
New Airplay This Week: 1 KZFM

ALANIS MORISSETTE 231/13

You Learn (Maverick/Reprise)

Total Stations: 10/Chart Move: Debut 40
Heavy (40+): 2 KLUC, KZZU
Medium (20-39): 2 KBOS, KZFM
Light (Under 20): 6

CHART BOUND

Plays/Gain

AMBER 224/25

This Is Your Night (Tommy Boy)

Total Stations: 22
Heavy (40+): 1 WBBM
Medium (20-39): 3 KBOS, KKXX, KSFM
Light (Under 20): 18
New Airplay This Week: 3 KKXX, KUBE, WWKX

NATHAN MORRIS 207/7

Wishes (Perspective/A&M)

Total Stations: 11
Heavy (40+): 2 KDON, KZZU
Medium (20-39): 3 KDGS, WJJS, WPOW
Light (Under 20): 6

MISTA 193/2

Blackberry Molasses (EastWest/EEG)

Total Stations: 13
Heavy (40+): 1 WJMH
Medium (20-39): 3 KCAQ, KDGS, KZHT
Light (Under 20): 9
New Airplay This Week: 2 WHHH, WJJS

MOST NEW AIRPLAY THIS WEEK

No. Of Stations

NEW EDITION <i>Hit Me Off (MCA)</i>	8
TOTAL <i>Kissin' You (Bad Boy/Arista)</i>	5
2PAC (FEAT. KC & JOJO) <i>How Do U Want It (Death Row/Interscope)</i>	3
AMBER <i>This Is Your Night (Tommy Boy)</i>	3
GROOVE THEORY <i>Baby Luv (Epic)</i>	3
LL COOL J <i>Loungin (Def Jam/Mercury)</i>	3
NAS <i>If I Ruled The World (Columbia)</i>	3
SHADES <i>Tell Me (I'll Be Around) (Motown)</i>	3
THE TONY RICH PROJECT <i>Like A Woman (LaFace/Arista)</i>	3
A TRIBE CALLED QUEST <i>1nce Again (Jive)</i>	3

DONNA LEWIS 192/56

I Love You Always Forever (Atlantic)

Total Stations: 9
Heavy (40+): 2 KKFR, WPOW
Medium (20-39): 3 KDGS, KSFM, KTFM
Light (Under 20): 4
New Airplay This Week: 2 KBOS, KTFM

J'SON 177/1

I'll Never Stop Loving You (Hollywood)

Total Stations: 17
Heavy (40+): 0
Medium (20-39): 4 KPRR, KZFM, WHHH, WJJS
Light (Under 20): 13

JOCELYN ENRIQUEZ 175/10

Do You Miss Me (Classified)

Total Stations: 11
Heavy (40+): 1 KYLD
Medium (20-39): 3 KMEL, KTFM, WPOW
Light (Under 20): 7
New Airplay This Week: 1 WPOW

RICKY MARTIN 160/31

Maria (Columbia)

Total Stations: 10
Heavy (40+): 2 KTFM, WPOW
Medium (20-39): 1 KPRR
Light (Under 20): 7
New Airplay This Week: 1 WWKX

THE OUTHERE BROTHERS 127/8

Boom Boom Boom (Aureus)

Total Stations: 20
Heavy (40+): 0

Medium (20-39): 1 KZZU
Light (Under 20): 19
New Airplay This Week: 1 KZZU

BAD YARD CLUB FEAT. CRYSTAL WATERS 126/19

In De Ghetto (Mercury)

Total Stations: 18
Heavy (40+): 0
Medium (20-39): 1 WWKX
Light (Under 20): 17
New Airplay This Week: 1 KCAQ

KRISTINE W 120/6

One More Try (Champion/RCA)

Total Stations: 15
Heavy (40+): 0
Medium (20-39): 2 WJJS, WPOW
Light (Under 20): 13

D'ANGELO 106/10

Me And Those Dreaming Eyes (EMI)

Total Stations: 10
Heavy (40+): 0
Medium (20-39): 3 KCAQ, KDGS, WJMH
Light (Under 20): 7
New Airplay This Week: 1 WHHH

ALL-4-ONE 100/9

Someday (Walt Disney/Hollywood)

Total Stations: 6
Heavy (40+): 0
Medium (20-39): 3 KDGS, KKFR, KTFM
Light (Under 20): 3
New Airplay This Week: 1 KTFM

A TRIBE CALLED QUEST 93/16

1nce Again (Jive)

Total Stations: 12
Heavy (40+): 0
Medium (20-39): 1 WQHT
Light (Under 20): 11
New Airplay This Week: 3 KPWR, WERQ, WJMH

OUTKAST 88/3

Elevators (Me & You) (LaFace/Arista)

Total Stations: 6
Heavy (40+): 0
Medium (20-39): 2 WJMH, WPGC
Light (Under 20): 4

A+ 79/23

All I See (Kedar/Universal)

Total Stations: 6
Heavy (40+): 1 WJMH
Medium (20-39): 0
Light (Under 20): 5

★ **SHADES 79/44**

Tell Me (I'll Be Around) (Motown)

Total Stations: 9
Heavy (40+): 0
Medium (20-39): 1 KDGS
Light (Under 20): 8
New Airplay This Week: 3 KZHT, WWKX, XHTZ

SWV 65/15

Use Your Heart (RCA)

Total Stations: 6
Heavy (40+): 0
Medium (20-39): 1 WPGC
Light (Under 20): 5
New Airplay This Week: 1 KDGS

★ **3T FEAT. MICHAEL JACKSON 57/27**

Why (MJJ/550 Music)

Total Stations: 3
Heavy (40+): 0
Medium (20-39): 1 KTFM
Light (Under 20): 2

★ **SIR MIX-A-LOT 52/26**

Jump On It (Rhyme Cartel/American/Reprise)

Total Stations: 11
Heavy (40+): 0
Medium (20-39): 1 KLUC
Light (Under 20): 10
New Airplay This Week: 2 KPWR, KZHT

"Baby Love"

groovetheory

**THEORY BECOMES REALITY
...AGAIN.**



Produced by Bryce P. Wilson. Lyrics and Vocal Arrangements by Arnel Larribe. Additional Production and Remix by Charles Roone. Bass by Lew Waiyer.

<http://www.sony.com> "EPIC" AND "E" REG. U.S. PAT. & TM. OFF. MARCA REGISTRADA © 1996 SONY MUSIC ENTERTAINMENT INC. 78227

World Radio History

RHYTHM-CROSSOVER



SONG ACTIVITY REPORTS



For Week Ending July 7, 1996

Detailed song tracking information for the last 5 weeks for all songs showing increased play this week. Total plays and gain do not include video play. Markets listed in order of population.

Total Plays/Gain		Total Plays/Gain		Total Plays/Gain		Total Plays/Gain		Total Plays/Gain																																																																																																																																																																																																																																																																																															
3T FEAT. MICHAEL JACKSON 57/27 <i>Why (MJJ/550)</i> Total Stations: 3		A+ All I See (Kedar/Universal) 79/23 Total Stations: 6		ALL-4-ONE 100/9 <i>Someday (Walt Disney/Hollywood)</i> Total Stations: 6		AMBER 224/25 <i>This Is Your Night (Tommy Boy)</i> Total Stations: 22		BAD YARD CLUB FEAT. CRYSTAL WATERS 126/19 <i>In De Ghetto (Mercury)</i> Total Stations: 18																																																																																																																																																																																																																																																																																															
<table border="1"> <thead> <tr><th>City</th><th>Station</th><th>Plays</th><th>Gain</th></tr> </thead> <tbody> <tr><td>New York</td><td>BET</td><td>1</td><td>1</td></tr> <tr><td>New York</td><td>MTV</td><td>1</td><td>1</td></tr> <tr><td>New York</td><td>WKUT</td><td>1</td><td>1</td></tr> <tr><td>New York</td><td>WQHT</td><td>1</td><td>1</td></tr> <tr><td>L.A.</td><td>KPWR</td><td>1</td><td>1</td></tr> <tr><td>Chicago</td><td>WBWB</td><td>1</td><td>1</td></tr> <tr><td>San Fran.</td><td>KMEL</td><td>1</td><td>1</td></tr> <tr><td>Wash., DC</td><td>KYLD</td><td>1</td><td>1</td></tr> <tr><td>Boston</td><td>WPGC</td><td>1</td><td>1</td></tr> <tr><td>Houston</td><td>WJMN</td><td>1</td><td>1</td></tr> <tr><td>Miami</td><td>WPOW</td><td>1</td><td>1</td></tr> <tr><td>Seattle</td><td>KUBE</td><td>1</td><td>1</td></tr> <tr><td>San Diego</td><td>XHTZ</td><td>1</td><td>1</td></tr> <tr><td>Balt.</td><td>WERQ</td><td>1</td><td>1</td></tr> <tr><td>Phoenix</td><td>KKFR</td><td>1</td><td>1</td></tr> <tr><td>Denver</td><td>KQKS</td><td>1</td><td>1</td></tr> <tr><td>Rivers.</td><td>KGCI</td><td>1</td><td>1</td></tr> </tbody> </table>		City	Station	Plays	Gain	New York	BET	1	1	New York	MTV	1	1	New York	WKUT	1	1	New York	WQHT	1	1	L.A.	KPWR	1	1	Chicago	WBWB	1	1	San Fran.	KMEL	1	1	Wash., DC	KYLD	1	1	Boston	WPGC	1	1	Houston	WJMN	1	1	Miami	WPOW	1	1	Seattle	KUBE	1	1	San Diego	XHTZ	1	1	Balt.	WERQ	1	1	Phoenix	KKFR	1	1	Denver	KQKS	1	1	Rivers.	KGCI	1	1	<table border="1"> <thead> <tr><th>City</th><th>Station</th><th>Plays</th><th>Gain</th></tr> </thead> <tbody> <tr><td>New York</td><td>BET</td><td>1</td><td>1</td></tr> <tr><td>New York</td><td>MTV</td><td>1</td><td>1</td></tr> <tr><td>New York</td><td>WKUT</td><td>1</td><td>1</td></tr> <tr><td>New York</td><td>WQHT</td><td>1</td><td>1</td></tr> <tr><td>L.A.</td><td>KPWR</td><td>1</td><td>1</td></tr> <tr><td>Chicago</td><td>WBWB</td><td>1</td><td>1</td></tr> <tr><td>San Fran.</td><td>KMEL</td><td>1</td><td>1</td></tr> <tr><td>Wash., DC</td><td>KYLD</td><td>1</td><td>1</td></tr> <tr><td>Boston</td><td>WPGC</td><td>1</td><td>1</td></tr> <tr><td>Houston</td><td>WJMN</td><td>1</td><td>1</td></tr> <tr><td>Miami</td><td>WPOW</td><td>1</td><td>1</td></tr> <tr><td>Seattle</td><td>KUBE</td><td>1</td><td>1</td></tr> <tr><td>San Diego</td><td>XHTZ</td><td>1</td><td>1</td></tr> <tr><td>Balt.</td><td>WERQ</td><td>1</td><td>1</td></tr> <tr><td>Phoenix</td><td>KKFR</td><td>1</td><td>1</td></tr> <tr><td>Denver</td><td>KQKS</td><td>1</td><td>1</td></tr> <tr><td>Rivers.</td><td>KGCI</td><td>1</td><td>1</td></tr> </tbody> </table>		City	Station	Plays	Gain	New York	BET	1	1	New York	MTV	1	1	New York	WKUT	1	1	New York	WQHT	1	1	L.A.	KPWR	1	1	Chicago	WBWB	1	1	San Fran.	KMEL	1	1	Wash., DC	KYLD	1	1	Boston	WPGC	1	1	Houston	WJMN	1	1	Miami	WPOW	1	1	Seattle	KUBE	1	1	San Diego	XHTZ	1	1	Balt.	WERQ	1	1	Phoenix	KKFR	1	1	Denver	KQKS	1	1	Rivers.	KGCI	1	1	<table border="1"> <thead> <tr><th>City</th><th>Station</th><th>Plays</th><th>Gain</th></tr> </thead> <tbody> <tr><td>New York</td><td>BET</td><td>1</td><td>1</td></tr> <tr><td>New York</td><td>MTV</td><td>1</td><td>1</td></tr> <tr><td>New York</td><td>WKUT</td><td>1</td><td>1</td></tr> <tr><td>New York</td><td>WQHT</td><td>1</td><td>1</td></tr> <tr><td>L.A.</td><td>KPWR</td><td>1</td><td>1</td></tr> <tr><td>Chicago</td><td>WBWB</td><td>1</td><td>1</td></tr> <tr><td>San Fran.</td><td>KMEL</td><td>1</td><td>1</td></tr> <tr><td>Wash., DC</td><td>KYLD</td><td>1</td><td>1</td></tr> <tr><td>Boston</td><td>WPGC</td><td>1</td><td>1</td></tr> <tr><td>Houston</td><td>WJMN</td><td>1</td><td>1</td></tr> <tr><td>Miami</td><td>WPOW</td><td>1</td><td>1</td></tr> <tr><td>Seattle</td><td>KUBE</td><td>1</td><td>1</td></tr> <tr><td>San Diego</td><td>XHTZ</td><td>1</td><td>1</td></tr> <tr><td>Balt.</td><td>WERQ</td><td>1</td><td>1</td></tr> <tr><td>Phoenix</td><td>KKFR</td><td>1</td><td>1</td></tr> <tr><td>Denver</td><td>KQKS</td><td>1</td><td>1</td></tr> <tr><td>Rivers.</td><td>KGCI</td><td>1</td><td>1</td></tr> </tbody> </table>		City	Station	Plays	Gain	New York	BET	1	1	New York	MTV	1	1	New York	WKUT	1	1	New York	WQHT	1	1	L.A.	KPWR	1	1	Chicago	WBWB	1	1	San Fran.	KMEL	1	1	Wash., DC	KYLD	1	1	Boston	WPGC	1	1	Houston	WJMN	1	1	Miami	WPOW	1	1	Seattle	KUBE	1	1	San Diego	XHTZ	1	1	Balt.	WERQ	1	1	Phoenix	KKFR	1	1	Denver	KQKS	1	1	Rivers.	KGCI	1	1	<table border="1"> <thead> <tr><th>City</th><th>Station</th><th>Plays</th><th>Gain</th></tr> </thead> <tbody> <tr><td>New York</td><td>BET</td><td>1</td><td>1</td></tr> <tr><td>New York</td><td>MTV</td><td>1</td><td>1</td></tr> <tr><td>New York</td><td>WKUT</td><td>1</td><td>1</td></tr> <tr><td>New York</td><td>WQHT</td><td>1</td><td>1</td></tr> <tr><td>L.A.</td><td>KPWR</td><td>1</td><td>1</td></tr> <tr><td>Chicago</td><td>WBWB</td><td>1</td><td>1</td></tr> <tr><td>San Fran.</td><td>KMEL</td><td>1</td><td>1</td></tr> <tr><td>Wash., DC</td><td>KYLD</td><td>1</td><td>1</td></tr> <tr><td>Boston</td><td>WPGC</td><td>1</td><td>1</td></tr> <tr><td>Houston</td><td>WJMN</td><td>1</td><td>1</td></tr> <tr><td>Miami</td><td>WPOW</td><td>1</td><td>1</td></tr> <tr><td>Seattle</td><td>KUBE</td><td>1</td><td>1</td></tr> <tr><td>San Diego</td><td>XHTZ</td><td>1</td><td>1</td></tr> <tr><td>Balt.</td><td>WERQ</td><td>1</td><td>1</td></tr> <tr><td>Phoenix</td><td>KKFR</td><td>1</td><td>1</td></tr> <tr><td>Denver</td><td>KQKS</td><td>1</td><td>1</td></tr> <tr><td>Rivers.</td><td>KGCI</td><td>1</td><td>1</td></tr> </tbody> </table>		City	Station	Plays	Gain	New York	BET	1	1	New York	MTV	1	1	New York	WKUT	1	1	New York	WQHT	1	1	L.A.	KPWR	1	1	Chicago	WBWB	1	1	San Fran.	KMEL	1	1	Wash., DC	KYLD	1	1	Boston	WPGC	1	1	Houston	WJMN	1	1	Miami	WPOW	1	1	Seattle	KUBE	1	1	San Diego	XHTZ	1	1	Balt.	WERQ	1	1	Phoenix	KKFR	1	1	Denver	KQKS	1	1	Rivers.	KGCI	1	1
City	Station	Plays	Gain																																																																																																																																																																																																																																																																																																				
New York	BET	1	1																																																																																																																																																																																																																																																																																																				
New York	MTV	1	1																																																																																																																																																																																																																																																																																																				
New York	WKUT	1	1																																																																																																																																																																																																																																																																																																				
New York	WQHT	1	1																																																																																																																																																																																																																																																																																																				
L.A.	KPWR	1	1																																																																																																																																																																																																																																																																																																				
Chicago	WBWB	1	1																																																																																																																																																																																																																																																																																																				
San Fran.	KMEL	1	1																																																																																																																																																																																																																																																																																																				
Wash., DC	KYLD	1	1																																																																																																																																																																																																																																																																																																				
Boston	WPGC	1	1																																																																																																																																																																																																																																																																																																				
Houston	WJMN	1	1																																																																																																																																																																																																																																																																																																				
Miami	WPOW	1	1																																																																																																																																																																																																																																																																																																				
Seattle	KUBE	1	1																																																																																																																																																																																																																																																																																																				
San Diego	XHTZ	1	1																																																																																																																																																																																																																																																																																																				
Balt.	WERQ	1	1																																																																																																																																																																																																																																																																																																				
Phoenix	KKFR	1	1																																																																																																																																																																																																																																																																																																				
Denver	KQKS	1	1																																																																																																																																																																																																																																																																																																				
Rivers.	KGCI	1	1																																																																																																																																																																																																																																																																																																				
City	Station	Plays	Gain																																																																																																																																																																																																																																																																																																				
New York	BET	1	1																																																																																																																																																																																																																																																																																																				
New York	MTV	1	1																																																																																																																																																																																																																																																																																																				
New York	WKUT	1	1																																																																																																																																																																																																																																																																																																				
New York	WQHT	1	1																																																																																																																																																																																																																																																																																																				
L.A.	KPWR	1	1																																																																																																																																																																																																																																																																																																				
Chicago	WBWB	1	1																																																																																																																																																																																																																																																																																																				
San Fran.	KMEL	1	1																																																																																																																																																																																																																																																																																																				
Wash., DC	KYLD	1	1																																																																																																																																																																																																																																																																																																				
Boston	WPGC	1	1																																																																																																																																																																																																																																																																																																				
Houston	WJMN	1	1																																																																																																																																																																																																																																																																																																				
Miami	WPOW	1	1																																																																																																																																																																																																																																																																																																				
Seattle	KUBE	1	1																																																																																																																																																																																																																																																																																																				
San Diego	XHTZ	1	1																																																																																																																																																																																																																																																																																																				
Balt.	WERQ	1	1																																																																																																																																																																																																																																																																																																				
Phoenix	KKFR	1	1																																																																																																																																																																																																																																																																																																				
Denver	KQKS	1	1																																																																																																																																																																																																																																																																																																				
Rivers.	KGCI	1	1																																																																																																																																																																																																																																																																																																				
City	Station	Plays	Gain																																																																																																																																																																																																																																																																																																				
New York	BET	1	1																																																																																																																																																																																																																																																																																																				
New York	MTV	1	1																																																																																																																																																																																																																																																																																																				
New York	WKUT	1	1																																																																																																																																																																																																																																																																																																				
New York	WQHT	1	1																																																																																																																																																																																																																																																																																																				
L.A.	KPWR	1	1																																																																																																																																																																																																																																																																																																				
Chicago	WBWB	1	1																																																																																																																																																																																																																																																																																																				
San Fran.	KMEL	1	1																																																																																																																																																																																																																																																																																																				
Wash., DC	KYLD	1	1																																																																																																																																																																																																																																																																																																				
Boston	WPGC	1	1																																																																																																																																																																																																																																																																																																				
Houston	WJMN	1	1																																																																																																																																																																																																																																																																																																				
Miami	WPOW	1	1																																																																																																																																																																																																																																																																																																				
Seattle	KUBE	1	1																																																																																																																																																																																																																																																																																																				
San Diego	XHTZ	1	1																																																																																																																																																																																																																																																																																																				
Balt.	WERQ	1	1																																																																																																																																																																																																																																																																																																				
Phoenix	KKFR	1	1																																																																																																																																																																																																																																																																																																				
Denver	KQKS	1	1																																																																																																																																																																																																																																																																																																				
Rivers.	KGCI	1	1																																																																																																																																																																																																																																																																																																				
City	Station	Plays	Gain																																																																																																																																																																																																																																																																																																				
New York	BET	1	1																																																																																																																																																																																																																																																																																																				
New York	MTV	1	1																																																																																																																																																																																																																																																																																																				
New York	WKUT	1	1																																																																																																																																																																																																																																																																																																				
New York	WQHT	1	1																																																																																																																																																																																																																																																																																																				
L.A.	KPWR	1	1																																																																																																																																																																																																																																																																																																				
Chicago	WBWB	1	1																																																																																																																																																																																																																																																																																																				
San Fran.	KMEL	1	1																																																																																																																																																																																																																																																																																																				
Wash., DC	KYLD	1	1																																																																																																																																																																																																																																																																																																				
Boston	WPGC	1	1																																																																																																																																																																																																																																																																																																				
Houston	WJMN	1	1																																																																																																																																																																																																																																																																																																				
Miami	WPOW	1	1																																																																																																																																																																																																																																																																																																				
Seattle	KUBE	1	1																																																																																																																																																																																																																																																																																																				
San Diego	XHTZ	1	1																																																																																																																																																																																																																																																																																																				
Balt.	WERQ	1	1																																																																																																																																																																																																																																																																																																				
Phoenix	KKFR	1	1																																																																																																																																																																																																																																																																																																				
Denver	KQKS	1	1																																																																																																																																																																																																																																																																																																				
Rivers.	KGCI	1	1																																																																																																																																																																																																																																																																																																				
TONI BRAXTON 1337/40 <i>You're Makin' Me High (LaFace/Arista)</i> Total Stations: 30		D'ANGELO 106/10 <i>Me And Those Dreamin' Eyes Of Mine (EMI)</i> Total Stations: 10		JOCELYN ENRIQUEZ 175/10 <i>Do You Miss Me (Classified)</i> Total Stations: 11		GHOST TOWN DJ'S 944/277 <i>My Boo (So So Def/Columbia)</i> Total Stations: 31		GROOVE THEORY 422/83 <i>Baby Luv (Epic)</i> Total Stations: 23																																																																																																																																																																																																																																																																																															
<table border="1"> <thead> <tr><th>City</th><th>Station</th><th>Plays</th><th>Gain</th></tr> </thead> <tbody> <tr><td>New York</td><td>BET</td><td>1</td><td>1</td></tr> <tr><td>New York</td><td>MTV</td><td>1</td><td>1</td></tr> <tr><td>New York</td><td>WKUT</td><td>1</td><td>1</td></tr> <tr><td>New York</td><td>WQHT</td><td>1</td><td>1</td></tr> <tr><td>L.A.</td><td>KPWR</td><td>1</td><td>1</td></tr> <tr><td>Chicago</td><td>WBWB</td><td>1</td><td>1</td></tr> <tr><td>San Fran.</td><td>KMEL</td><td>1</td><td>1</td></tr> <tr><td>Wash., DC</td><td>KYLD</td><td>1</td><td>1</td></tr> <tr><td>Boston</td><td>WPGC</td><td>1</td><td>1</td></tr> <tr><td>Houston</td><td>WJMN</td><td>1</td><td>1</td></tr> <tr><td>Miami</td><td>WPOW</td><td>1</td><td>1</td></tr> <tr><td>Seattle</td><td>KUBE</td><td>1</td><td>1</td></tr> <tr><td>San Diego</td><td>XHTZ</td><td>1</td><td>1</td></tr> <tr><td>Balt.</td><td>WERQ</td><td>1</td><td>1</td></tr> <tr><td>Phoenix</td><td>KKFR</td><td>1</td><td>1</td></tr> <tr><td>Denver</td><td>KQKS</td><td>1</td><td>1</td></tr> <tr><td>Rivers.</td><td>KGCI</td><td>1</td><td>1</td></tr> </tbody> </table>		City	Station	Plays	Gain	New York	BET	1	1	New York	MTV	1	1	New York	WKUT	1	1	New York	WQHT	1	1	L.A.	KPWR	1	1	Chicago	WBWB	1	1	San Fran.	KMEL	1	1	Wash., DC	KYLD	1	1	Boston	WPGC	1	1	Houston	WJMN	1	1	Miami	WPOW	1	1	Seattle	KUBE	1	1	San Diego	XHTZ	1	1	Balt.	WERQ	1	1	Phoenix	KKFR	1	1	Denver	KQKS	1	1	Rivers.	KGCI	1	1	<table border="1"> <thead> <tr><th>City</th><th>Station</th><th>Plays</th><th>Gain</th></tr> </thead> <tbody> <tr><td>New York</td><td>BET</td><td>1</td><td>1</td></tr> <tr><td>New York</td><td>MTV</td><td>1</td><td>1</td></tr> <tr><td>New York</td><td>WKUT</td><td>1</td><td>1</td></tr> <tr><td>New York</td><td>WQHT</td><td>1</td><td>1</td></tr> <tr><td>L.A.</td><td>KPWR</td><td>1</td><td>1</td></tr> <tr><td>Chicago</td><td>WBWB</td><td>1</td><td>1</td></tr> <tr><td>San Fran.</td><td>KMEL</td><td>1</td><td>1</td></tr> <tr><td>Wash., DC</td><td>KYLD</td><td>1</td><td>1</td></tr> <tr><td>Boston</td><td>WPGC</td><td>1</td><td>1</td></tr> <tr><td>Houston</td><td>WJMN</td><td>1</td><td>1</td></tr> <tr><td>Miami</td><td>WPOW</td><td>1</td><td>1</td></tr> <tr><td>Seattle</td><td>KUBE</td><td>1</td><td>1</td></tr> <tr><td>San Diego</td><td>XHTZ</td><td>1</td><td>1</td></tr> <tr><td>Balt.</td><td>WERQ</td><td>1</td><td>1</td></tr> <tr><td>Phoenix</td><td>KKFR</td><td>1</td><td>1</td></tr> <tr><td>Denver</td><td>KQKS</td><td>1</td><td>1</td></tr> <tr><td>Rivers.</td><td>KGCI</td><td>1</td><td>1</td></tr> </tbody> </table>		City	Station	Plays	Gain	New York	BET	1	1	New York	MTV	1	1	New York	WKUT	1	1	New York	WQHT	1	1	L.A.	KPWR	1	1	Chicago	WBWB	1	1	San Fran.	KMEL	1	1	Wash., DC	KYLD	1	1	Boston	WPGC	1	1	Houston	WJMN	1	1	Miami	WPOW	1	1	Seattle	KUBE	1	1	San Diego	XHTZ	1	1	Balt.	WERQ	1	1	Phoenix	KKFR	1	1	Denver	KQKS	1	1	Rivers.	KGCI	1	1	<table border="1"> <thead> <tr><th>City</th><th>Station</th><th>Plays</th><th>Gain</th></tr> </thead> <tbody> <tr><td>New York</td><td>BET</td><td>1</td><td>1</td></tr> <tr><td>New York</td><td>MTV</td><td>1</td><td>1</td></tr> <tr><td>New York</td><td>WKUT</td><td>1</td><td>1</td></tr> <tr><td>New York</td><td>WQHT</td><td>1</td><td>1</td></tr> <tr><td>L.A.</td><td>KPWR</td><td>1</td><td>1</td></tr> <tr><td>Chicago</td><td>WBWB</td><td>1</td><td>1</td></tr> <tr><td>San Fran.</td><td>KMEL</td><td>1</td><td>1</td></tr> <tr><td>Wash., DC</td><td>KYLD</td><td>1</td><td>1</td></tr> <tr><td>Boston</td><td>WPGC</td><td>1</td><td>1</td></tr> <tr><td>Houston</td><td>WJMN</td><td>1</td><td>1</td></tr> <tr><td>Miami</td><td>WPOW</td><td>1</td><td>1</td></tr> <tr><td>Seattle</td><td>KUBE</td><td>1</td><td>1</td></tr> <tr><td>San Diego</td><td>XHTZ</td><td>1</td><td>1</td></tr> <tr><td>Balt.</td><td>WERQ</td><td>1</td><td>1</td></tr> <tr><td>Phoenix</td><td>KKFR</td><td>1</td><td>1</td></tr> <tr><td>Denver</td><td>KQKS</td><td>1</td><td>1</td></tr> <tr><td>Rivers.</td><td>KGCI</td><td>1</td><td>1</td></tr> </tbody> </table>		City	Station	Plays	Gain	New York	BET	1	1	New York	MTV	1	1	New York	WKUT	1	1	New York	WQHT	1	1	L.A.	KPWR	1	1	Chicago	WBWB	1	1	San Fran.	KMEL	1	1	Wash., DC	KYLD	1	1	Boston	WPGC	1	1	Houston	WJMN	1	1	Miami	WPOW	1	1	Seattle	KUBE	1	1	San Diego	XHTZ	1	1	Balt.	WERQ	1	1	Phoenix	KKFR	1	1	Denver	KQKS	1	1	Rivers.	KGCI	1	1	<table border="1"> <thead> <tr><th>City</th><th>Station</th><th>Plays</th><th>Gain</th></tr> </thead> <tbody> <tr><td>New York</td><td>BET</td><td>1</td><td>1</td></tr> <tr><td>New York</td><td>MTV</td><td>1</td><td>1</td></tr> <tr><td>New York</td><td>WKUT</td><td>1</td><td>1</td></tr> <tr><td>New York</td><td>WQHT</td><td>1</td><td>1</td></tr> <tr><td>L.A.</td><td>KPWR</td><td>1</td><td>1</td></tr> <tr><td>Chicago</td><td>WBWB</td><td>1</td><td>1</td></tr> <tr><td>San Fran.</td><td>KMEL</td><td>1</td><td>1</td></tr> <tr><td>Wash., DC</td><td>KYLD</td><td>1</td><td>1</td></tr> <tr><td>Boston</td><td>WPGC</td><td>1</td><td>1</td></tr> <tr><td>Houston</td><td>WJMN</td><td>1</td><td>1</td></tr> <tr><td>Miami</td><td>WPOW</td><td>1</td><td>1</td></tr> <tr><td>Seattle</td><td>KUBE</td><td>1</td><td>1</td></tr> <tr><td>San Diego</td><td>XHTZ</td><td>1</td><td>1</td></tr> <tr><td>Balt.</td><td>WERQ</td><td>1</td><td>1</td></tr> <tr><td>Phoenix</td><td>KKFR</td><td>1</td><td>1</td></tr> <tr><td>Denver</td><td>KQKS</td><td>1</td><td>1</td></tr> <tr><td>Rivers.</td><td>KGCI</td><td>1</td><td>1</td></tr> </tbody> </table>		City	Station	Plays	Gain	New York	BET	1	1	New York	MTV	1	1	New York	WKUT	1	1	New York	WQHT	1	1	L.A.	KPWR	1	1	Chicago	WBWB	1	1	San Fran.	KMEL	1	1	Wash., DC	KYLD	1	1	Boston	WPGC	1	1	Houston	WJMN	1	1	Miami	WPOW	1	1	Seattle	KUBE	1	1	San Diego	XHTZ	1	1	Balt.	WERQ	1	1	Phoenix	KKFR	1	1	Denver	KQKS	1	1	Rivers.	KGCI	1	1
City	Station	Plays	Gain																																																																																																																																																																																																																																																																																																				
New York	BET	1	1																																																																																																																																																																																																																																																																																																				
New York	MTV	1	1																																																																																																																																																																																																																																																																																																				
New York	WKUT	1	1																																																																																																																																																																																																																																																																																																				
New York	WQHT	1	1																																																																																																																																																																																																																																																																																																				
L.A.	KPWR	1	1																																																																																																																																																																																																																																																																																																				
Chicago	WBWB	1	1																																																																																																																																																																																																																																																																																																				
San Fran.	KMEL	1	1																																																																																																																																																																																																																																																																																																				
Wash., DC	KYLD	1	1																																																																																																																																																																																																																																																																																																				
Boston	WPGC	1	1																																																																																																																																																																																																																																																																																																				
Houston	WJMN	1	1																																																																																																																																																																																																																																																																																																				
Miami	WPOW	1	1																																																																																																																																																																																																																																																																																																				
Seattle	KUBE	1	1																																																																																																																																																																																																																																																																																																				
San Diego	XHTZ	1	1																																																																																																																																																																																																																																																																																																				
Balt.	WERQ	1	1																																																																																																																																																																																																																																																																																																				
Phoenix	KKFR	1	1																																																																																																																																																																																																																																																																																																				
Denver	KQKS	1	1																																																																																																																																																																																																																																																																																																				
Rivers.	KGCI	1	1																																																																																																																																																																																																																																																																																																				
City	Station	Plays	Gain																																																																																																																																																																																																																																																																																																				
New York	BET	1	1																																																																																																																																																																																																																																																																																																				
New York	MTV	1	1																																																																																																																																																																																																																																																																																																				
New York	WKUT	1	1																																																																																																																																																																																																																																																																																																				
New York	WQHT	1	1																																																																																																																																																																																																																																																																																																				
L.A.	KPWR	1	1																																																																																																																																																																																																																																																																																																				
Chicago	WBWB	1	1																																																																																																																																																																																																																																																																																																				
San Fran.	KMEL	1	1																																																																																																																																																																																																																																																																																																				
Wash., DC	KYLD	1	1																																																																																																																																																																																																																																																																																																				
Boston	WPGC	1	1																																																																																																																																																																																																																																																																																																				
Houston	WJMN	1	1																																																																																																																																																																																																																																																																																																				
Miami	WPOW	1	1																																																																																																																																																																																																																																																																																																				
Seattle	KUBE	1	1																																																																																																																																																																																																																																																																																																				
San Diego	XHTZ	1	1																																																																																																																																																																																																																																																																																																				
Balt.	WERQ	1	1																																																																																																																																																																																																																																																																																																				
Phoenix	KKFR	1	1																																																																																																																																																																																																																																																																																																				
Denver	KQKS	1	1																																																																																																																																																																																																																																																																																																				
Rivers.	KGCI	1	1																																																																																																																																																																																																																																																																																																				
City	Station	Plays	Gain																																																																																																																																																																																																																																																																																																				
New York	BET	1	1																																																																																																																																																																																																																																																																																																				
New York	MTV	1	1																																																																																																																																																																																																																																																																																																				
New York	WKUT	1	1																																																																																																																																																																																																																																																																																																				
New York	WQHT	1	1																																																																																																																																																																																																																																																																																																				
L.A.	KPWR	1	1																																																																																																																																																																																																																																																																																																				
Chicago	WBWB	1	1																																																																																																																																																																																																																																																																																																				
San Fran.	KMEL	1	1																																																																																																																																																																																																																																																																																																				
Wash., DC	KYLD	1	1																																																																																																																																																																																																																																																																																																				
Boston	WPGC	1	1																																																																																																																																																																																																																																																																																																				
Houston	WJMN	1	1																																																																																																																																																																																																																																																																																																				
Miami	WPOW	1	1																																																																																																																																																																																																																																																																																																				
Seattle	KUBE	1	1																																																																																																																																																																																																																																																																																																				
San Diego	XHTZ	1	1																																																																																																																																																																																																																																																																																																				
Balt.	WERQ	1	1																																																																																																																																																																																																																																																																																																				
Phoenix	KKFR	1	1																																																																																																																																																																																																																																																																																																				
Denver	KQKS	1	1																																																																																																																																																																																																																																																																																																				
Rivers.	KGCI	1	1																																																																																																																																																																																																																																																																																																				
City	Station	Plays	Gain																																																																																																																																																																																																																																																																																																				
New York	BET	1	1																																																																																																																																																																																																																																																																																																				
New York	MTV	1	1																																																																																																																																																																																																																																																																																																				
New York	WKUT	1	1																																																																																																																																																																																																																																																																																																				
New York	WQHT	1	1																																																																																																																																																																																																																																																																																																				
L.A.	KPWR	1	1																																																																																																																																																																																																																																																																																																				
Chicago	WBWB	1	1																																																																																																																																																																																																																																																																																																				
San Fran.	KMEL	1	1																																																																																																																																																																																																																																																																																																				
Wash., DC	KYLD	1	1																																																																																																																																																																																																																																																																																																				
Boston	WPGC	1	1																																																																																																																																																																																																																																																																																																				
Houston	WJMN	1	1																																																																																																																																																																																																																																																																																																				
Miami	WPOW	1	1																																																																																																																																																																																																																																																																																																				
Seattle	KUBE	1	1																																																																																																																																																																																																																																																																																																				
San Diego	XHTZ	1	1																																																																																																																																																																																																																																																																																																				
Balt.	WERQ	1	1																																																																																																																																																																																																																																																																																																				
Phoenix	KKFR	1	1																																																																																																																																																																																																																																																																																																				
Denver	KQKS	1	1																																																																																																																																																																																																																																																																																																				
Rivers.	KGCI	1	1																																																																																																																																																																																																																																																																																																				
J'SON 177/1 <i>I'll Never Stop Loving You (Hollywood)</i> Total Stations: 17		KRISTINE W 120/6 <i>One More Try (Champion/RCA)</i> Total Stations: 15		DONNA LEWIS 192/56 <i>I Love You Always Forever (Atlantic)</i> Total Stations: 9		LL COOL J 349/33 <i>Loungin' (Def Jam/Mercury)</i> Total Stations: 24		LOS DEL RIO 686/64 <i>Macarena (Bayside Boys Mix) (RCA)</i> Total Stations: 23																																																																																																																																																																																																																																																																																															
<table border="1"> <thead> <tr><th>City</th><th>Station</th><th>Plays</th><th>Gain</th></tr> </thead> <tbody> <tr><td>New York</td><td>BET</td><td>1</td><td>1</td></tr> <tr><td>New York</td><td>MTV</td><td>1</td><td>1</td></tr> <tr><td>New York</td><td>WKUT</td><td>1</td><td>1</td></tr> <tr><td>New York</td><td>WQHT</td><td>1</td><td>1</td></tr> <tr><td>L.A.</td><td>KPWR</td><td>1</td><td>1</td></tr> <tr><td>Chicago</td><td>WBWB</td><td>1</td><td>1</td></tr> <tr><td>San Fran.</td><td>KMEL</td><td>1</td><td>1</td></tr> <tr><td>Wash., DC</td><td>KYLD</td><td>1</td><td>1</td></tr> <tr><td>Boston</td><td>WPGC</td><td>1</td><td>1</td></tr> <tr><td>Houston</td><td>WJMN</td><td>1</td><td>1</td></tr> <tr><td>Miami</td><td>WPOW</td><td>1</td><td>1</td></tr> <tr><td>Seattle</td><td>KUBE</td><td>1</td><td>1</td></tr> <tr><td>San Diego</td><td>XHTZ</td><td>1</td><td>1</td></tr> <tr><td>Balt.</td><td>WERQ</td><td>1</td><td>1</td></tr> <tr><td>Phoenix</td><td>KKFR</td><td>1</td><td>1</td></tr> <tr><td>Denver</td><td>KQKS</td><td>1</td><td>1</td></tr> <tr><td>Rivers.</td><td>KGCI</td><td>1</td><td>1</td></tr> </tbody> </table>		City	Station	Plays	Gain	New York	BET	1	1	New York	MTV	1	1	New York	WKUT	1	1	New York	WQHT	1	1	L.A.	KPWR	1	1	Chicago	WBWB	1	1	San Fran.	KMEL	1	1	Wash., DC	KYLD	1	1	Boston	WPGC	1	1	Houston	WJMN	1	1	Miami	WPOW	1	1	Seattle	KUBE	1	1	San Diego	XHTZ	1	1	Balt.	WERQ	1	1	Phoenix	KKFR	1	1	Denver	KQKS	1	1	Rivers.	KGCI	1	1	<table border="1"> <thead> <tr><th>City</th><th>Station</th><th>Plays</th><th>Gain</th></tr> </thead> <tbody> <tr><td>New York</td><td>BET</td><td>1</td><td>1</td></tr> <tr><td>New York</td><td>MTV</td><td>1</td><td>1</td></tr> <tr><td>New York</td><td>WKUT</td><td>1</td><td>1</td></tr> <tr><td>New York</td><td>WQHT</td><td>1</td><td>1</td></tr> <tr><td>L.A.</td><td>KPWR</td><td>1</td><td>1</td></tr> <tr><td>Chicago</td><td>WBWB</td><td>1</td><td>1</td></tr> <tr><td>San Fran.</td><td>KMEL</td><td>1</td><td>1</td></tr> <tr><td>Wash., DC</td><td>KYLD</td><td>1</td><td>1</td></tr> <tr><td>Boston</td><td>WPGC</td><td>1</td><td>1</td></tr> <tr><td>Houston</td><td>WJMN</td><td>1</td><td>1</td></tr> <tr><td>Miami</td><td>WPOW</td><td>1</td><td>1</td></tr> <tr><td>Seattle</td><td>KUBE</td><td>1</td><td>1</td></tr> <tr><td>San Diego</td><td>XHTZ</td><td>1</td><td>1</td></tr> <tr><td>Balt.</td><td>WERQ</td><td>1</td><td>1</td></tr> <tr><td>Phoenix</td><td>KKFR</td><td>1</td><td>1</td></tr> <tr><td>Denver</td><td>KQKS</td><td>1</td><td>1</td></tr> <tr><td>Rivers.</td><td>KGCI</td><td>1</td><td>1</td></tr> </tbody> </table>		City	Station	Plays	Gain	New York	BET	1	1	New York	MTV	1	1	New York	WKUT	1	1	New York	WQHT	1	1	L.A.	KPWR	1	1	Chicago	WBWB	1	1	San Fran.	KMEL	1	1	Wash., DC	KYLD	1	1	Boston	WPGC	1	1	Houston	WJMN	1	1	Miami	WPOW	1	1	Seattle	KUBE	1	1	San Diego	XHTZ	1	1	Balt.	WERQ	1	1	Phoenix	KKFR	1	1	Denver	KQKS	1	1	Rivers.	KGCI	1	1	<table border="1"> <thead> <tr><th>City</th><th>Station</th><th>Plays</th><th>Gain</th></tr> </thead> <tbody> <tr><td>New York</td><td>BET</td><td>1</td><td>1</td></tr> <tr><td>New York</td><td>MTV</td><td>1</td><td>1</td></tr> <tr><td>New York</td><td>WKUT</td><td>1</td><td>1</td></tr> <tr><td>New York</td><td>WQHT</td><td>1</td><td>1</td></tr> <tr><td>L.A.</td><td>KPWR</td><td>1</td><td>1</td></tr> <tr><td>Chicago</td><td>WBWB</td><td>1</td><td>1</td></tr> <tr><td>San Fran.</td><td>KMEL</td><td>1</td><td>1</td></tr> <tr><td>Wash., DC</td><td>KYLD</td><td>1</td><td>1</td></tr> <tr><td>Boston</td><td>WPGC</td><td>1</td><td>1</td></tr> <tr><td>Houston</td><td>WJMN</td><td>1</td><td>1</td></tr> <tr><td>Miami</td><td>WPOW</td><td>1</td><td>1</td></tr> <tr><td>Seattle</td><td>KUBE</td><td>1</td><td>1</td></tr> <tr><td>San Diego</td><td>XHTZ</td><td>1</td><td>1</td></tr> <tr><td>Balt.</td><td>WERQ</td><td>1</td><td>1</td></tr> <tr><td>Phoenix</td><td>KKFR</td><td>1</td><td>1</td></tr> <tr><td>Denver</td><td>KQKS</td><td>1</td><td>1</td></tr> <tr><td>Rivers.</td><td>KGCI</td><td>1</td><td>1</td></tr> </tbody> </table>		City	Station	Plays	Gain	New York	BET	1	1	New York	MTV	1	1	New York	WKUT	1	1	New York	WQHT	1	1	L.A.	KPWR	1	1	Chicago	WBWB	1	1	San Fran.	KMEL	1	1	Wash., DC	KYLD	1	1	Boston	WPGC	1	1	Houston	WJMN	1	1	Miami	WPOW	1	1	Seattle	KUBE	1	1	San Diego	XHTZ	1	1	Balt.	WERQ	1	1	Phoenix	KKFR	1	1	Denver	KQKS	1	1	Rivers.	KGCI	1	1	<table border="1"> <thead> <tr><th>City</th><th>Station</th><th>Plays</th><th>Gain</th></tr> </thead> <tbody> <tr><td>New York</td><td>BET</td><td>1</td><td>1</td></tr> <tr><td>New York</td><td>MTV</td><td>1</td><td>1</td></tr> <tr><td>New York</td><td>WKUT</td><td>1</td><td>1</td></tr> <tr><td>New York</td><td>WQHT</td><td>1</td><td>1</td></tr> <tr><td>L.A.</td><td>KPWR</td><td>1</td><td>1</td></tr> <tr><td>Chicago</td><td>WBWB</td><td>1</td><td>1</td></tr> <tr><td>San Fran.</td><td>KMEL</td><td>1</td><td>1</td></tr> <tr><td>Wash., DC</td><td>KYLD</td><td>1</td><td>1</td></tr> <tr><td>Boston</td><td>WPGC</td><td>1</td><td>1</td></tr> <tr><td>Houston</td><td>WJMN</td><td>1</td><td>1</td></tr> <tr><td>Miami</td><td>WPOW</td><td>1</td><td>1</td></tr> <tr><td>Seattle</td><td>KUBE</td><td>1</td><td>1</td></tr> <tr><td>San Diego</td><td>XHTZ</td><td>1</td><td>1</td></tr> <tr><td>Balt.</td><td>WERQ</td><td>1</td><td>1</td></tr> <tr><td>Phoenix</td><td>KKFR</td><td>1</td><td>1</td></tr> <tr><td>Denver</td><td>KQKS</td><td>1</td><td>1</td></tr> <tr><td>Rivers.</td><td>KGCI</td><td>1</td><td>1</td></tr> </tbody> </table>		City	Station	Plays	Gain	New York	BET	1	1	New York	MTV	1	1	New York	WKUT	1	1	New York	WQHT	1	1	L.A.	KPWR	1	1	Chicago	WBWB	1	1	San Fran.	KMEL	1	1	Wash., DC	KYLD	1	1	Boston	WPGC	1	1	Houston	WJMN	1	1	Miami	WPOW	1	1	Seattle	KUBE	1	1	San Diego	XHTZ	1	1	Balt.	WERQ	1	1	Phoenix	KKFR	1	1	Denver	KQKS	1	1	Rivers.	KGCI	1	1
City	Station	Plays	Gain																																																																																																																																																																																																																																																																																																				
New York	BET	1	1																																																																																																																																																																																																																																																																																																				
New York	MTV	1	1																																																																																																																																																																																																																																																																																																				
New York	WKUT	1	1																																																																																																																																																																																																																																																																																																				
New York	WQHT	1	1																																																																																																																																																																																																																																																																																																				
L.A.	KPWR	1	1																																																																																																																																																																																																																																																																																																				
Chicago	WBWB	1	1																																																																																																																																																																																																																																																																																																				
San Fran.	KMEL	1	1																																																																																																																																																																																																																																																																																																				
Wash., DC	KYLD	1	1																																																																																																																																																																																																																																																																																																				
Boston	WPGC	1	1																																																																																																																																																																																																																																																																																																				
Houston	WJMN	1	1																																																																																																																																																																																																																																																																																																				
Miami	WPOW	1	1																																																																																																																																																																																																																																																																																																				
Seattle	KUBE	1	1																																																																																																																																																																																																																																																																																																				
San Diego	XHTZ	1	1																																																																																																																																																																																																																																																																																																				
Balt.	WERQ	1	1																																																																																																																																																																																																																																																																																																				
Phoenix	KKFR	1	1																																																																																																																																																																																																																																																																																																				
Denver	KQKS	1	1																																																																																																																																																																																																																																																																																																				
Rivers.	KGCI	1	1																																																																																																																																																																																																																																																																																																				
City	Station	Plays	Gain																																																																																																																																																																																																																																																																																																				
New York	BET	1	1																																																																																																																																																																																																																																																																																																				
New York	MTV	1	1																																																																																																																																																																																																																																																																																																				
New York	WKUT	1	1																																																																																																																																																																																																																																																																																																				
New York	WQHT	1	1																																																																																																																																																																																																																																																																																																				
L.A.	KPWR	1	1																																																																																																																																																																																																																																																																																																				
Chicago	WBWB	1	1																																																																																																																																																																																																																																																																																																				
San Fran.	KMEL	1	1																																																																																																																																																																																																																																																																																																				
Wash., DC	KYLD	1	1																																																																																																																																																																																																																																																																																																				
Boston	WPGC	1	1																																																																																																																																																																																																																																																																																																				
Houston	WJMN	1	1																																																																																																																																																																																																																																																																																																				
Miami	WPOW	1	1																																																																																																																																																																																																																																																																																																				
Seattle	KUBE	1	1																																																																																																																																																																																																																																																																																																				
San Diego	XHTZ	1	1																																																																																																																																																																																																																																																																																																				
Balt.	WERQ	1	1																																																																																																																																																																																																																																																																																																				
Phoenix	KKFR	1	1																																																																																																																																																																																																																																																																																																				
Denver	KQKS	1	1																																																																																																																																																																																																																																																																																																				
Rivers.	KGCI	1	1																																																																																																																																																																																																																																																																																																				
City	Station	Plays	Gain																																																																																																																																																																																																																																																																																																				
New York	BET	1	1																																																																																																																																																																																																																																																																																																				
New York	MTV	1	1																																																																																																																																																																																																																																																																																																				
New York	WKUT	1	1																																																																																																																																																																																																																																																																																																				
New York	WQHT	1	1																																																																																																																																																																																																																																																																																																				
L.A.	KPWR	1	1																																																																																																																																																																																																																																																																																																				
Chicago	WBWB	1	1																																																																																																																																																																																																																																																																																																				
San Fran.	KMEL	1	1																																																																																																																																																																																																																																																																																																				
Wash., DC	KYLD	1	1																																																																																																																																																																																																																																																																																																				
Boston	WPGC	1	1																																																																																																																																																																																																																																																																																																				
Houston	WJMN	1	1																																																																																																																																																																																																																																																																																																				
Miami	WPOW	1	1																																																																																																																																																																																																																																																																																																				
Seattle	KUBE	1	1																																																																																																																																																																																																																																																																																																				
San Diego	XHTZ	1	1																																																																																																																																																																																																																																																																																																				
Balt.	WERQ	1	1																																																																																																																																																																																																																																																																																																				
Phoenix	KKFR	1	1																																																																																																																																																																																																																																																																																																				
Denver	KQKS	1	1																																																																																																																																																																																																																																																																																																				
Rivers.	KGCI	1	1																																																																																																																																																																																																																																																																																																				
City	Station	Plays	Gain																																																																																																																																																																																																																																																																																																				
New York	BET	1	1																																																																																																																																																																																																																																																																																																				
New York	MTV	1	1																																																																																																																																																																																																																																																																																																				
New York	WKUT	1	1																																																																																																																																																																																																																																																																																																				
New York	WQHT	1	1																																																																																																																																																																																																																																																																																																				
L.A.	KPWR	1	1																																																																																																																																																																																																																																																																																																				
Chicago	WBWB	1	1																																																																																																																																																																																																																																																																																																				
San Fran.	KMEL	1	1																																																																																																																																																																																																																																																																																																				
Wash., DC	KYLD	1	1																																																																																																																																																																																																																																																																																																				
Boston	WPGC	1	1																																																																																																																																																																																																																																																																																																				
Houston	WJMN	1	1																																																																																																																																																																																																																																																																																																				
Miami	WPOW	1	1																																																																																																																																																																																																																																																																																																				
Seattle	KUBE	1	1																																																																																																																																																																																																																																																																																																				
San Diego	XHTZ	1	1																																																																																																																																																																																																																																																																																																				
Balt.	WERQ	1	1																																																																																																																																																																																																																																																																																																				
Phoenix	KKFR	1	1																																																																																																																																																																																																																																																																																																				
Denver	KQKS	1	1																																																																																																																																																																																																																																																																																																				
Rivers.	KGCI	1	1																																																																																																																																																																																																																																																																																																				
RICKY MARTIN 160/31 <i>Maria (Columbia)</i> Total Stations: 10		MISTA 193/2 <i>Blackberry Molasses (EastWest/EEG)</i> Total Stations: 13		ALANIS MORISSETTE 231/13 <i>You Learn (Maverick/Reprise)</i> Total Stations: 10		NATHAN MORRIS 207/7 <i>Wishes (Perspective/A&M)</i> Total Stations: 11		NAS 400/16 <i>If I Ruled The World (Columbia)</i> Total Stations: 25																																																																																																																																																																																																																																																																																															
<table border="1"> <thead> <tr><th>City</th><th>Station</th><th>Plays</th><th>Gain</th></tr> </thead> <tbody> <tr><td>New York</td><td>BET</td><td>1</td><td>1</td></tr> <tr><td>New York</td><td>MTV</td><td>1</td><td>1</td></tr> <tr><td>New York</td><td>WKUT</td><td>1</td><td>1</td></tr> <tr><td>New York</td><td>WQHT</td><td>1</td><td>1</td></tr> <tr><td>L.A.</td><td>KPWR</td><td>1</td><td>1</td></tr> <tr><td>Chicago</td><td>WBWB</td><td>1</td><td>1</td></tr> <tr><td>San Fran.</td><td>KMEL</td><td>1</td><td>1</td></tr> <tr><td>Wash., DC</td><td>KYLD</td><td>1</td><td>1</td></tr> <tr><td>Boston</td><td>WPGC</td><td>1</td><td>1</td></tr> <tr><td>Houston</td><td>WJMN</td><td>1</td><td>1</td></tr> <tr><td>Miami</td><td>WPOW</td><td>1</td><td>1</td></tr> <tr><td>Seattle</td><td>KUBE</td><td>1</td><td>1</td></tr> <tr><td>San Diego</td><td>XHTZ</td><td>1</td><td>1</td></tr> <tr><td>Balt.</td><td>WERQ</td><td>1</td><td>1</td></tr> <tr><td>Phoenix</td><td>KKFR</td><td>1</td><td>1</td></tr> <tr><td>Denver</td><td>KQKS</td><td>1</td><td>1</td></tr> <tr><td>Rivers.</td><td>KGCI</td><td>1</td><td>1</td></tr> </tbody> </table>		City	Station	Plays	Gain	New York	BET	1	1	New York	MTV	1	1	New York	WKUT	1	1	New York	WQHT	1	1	L.A.	KPWR	1	1	Chicago	WBWB	1	1	San Fran.	KMEL	1	1	Wash., DC	KYLD	1	1	Boston	WPGC	1	1	Houston	WJMN	1	1	Miami	WPOW	1	1	Seattle	KUBE	1	1	San Diego	XHTZ	1	1	Balt.	WERQ	1	1	Phoenix	KKFR	1	1	Denver	KQKS	1	1	Rivers.	KGCI	1	1	<table border="1"> <thead> <tr><th>City</th><th>Station</th><th>Plays</th><th>Gain</th></tr> </thead> <tbody> <tr><td>New York</td><td>BET</td><td>1</td><td>1</td></tr> <tr><td>New York</td><td>MTV</td><td>1</td><td>1</td></tr> <tr><td>New York</td><td>WKUT</td><td>1</td><td>1</td></tr> <tr><td>New York</td><td>WQHT</td><td>1</td><td>1</td></tr> <tr><td>L.A.</td><td>KPWR</td><td>1</td><td>1</td></tr> <tr><td>Chicago</td><td>WBWB</td><td>1</td><td>1</td></tr> <tr><td>San Fran.</td><td>KMEL</td><td>1</td><td>1</td></tr> <tr><td>Wash., DC</td><td>KYLD</td><td>1</td><td>1</td></tr> <tr><td>Boston</td><td>WPGC</td><td>1</td><td>1</td></tr> <tr><td>Houston</td><td>WJMN</td><td>1</td><td>1</td></tr> <tr><td>Miami</td><td>WPOW</td><td>1</td><td>1</td></tr> <tr><td>Seattle</td><td>KUBE</td><td>1</td><td>1</td></tr> <tr><td>San Diego</td><td>XHTZ</td><td>1</td><td>1</td></tr> <tr><td>Balt.</td><td>WERQ</td><td>1</td><td>1</td></tr> <tr><td>Phoenix</td><td>KKFR</td><td>1</td><td>1</td></tr> <tr><td>Denver</td><td>KQKS</td><td>1</td><td>1</td></tr> <tr><td>Rivers.</td><td>KGCI</td><td>1</td><td>1</td></tr> </tbody> </table>		City	Station	Plays	Gain	New York	BET	1	1	New York	MTV	1	1	New York	WKUT	1	1	New York	WQHT	1	1	L.A.	KPWR	1	1	Chicago	WBWB	1	1	San Fran.	KMEL	1	1	Wash., DC	KYLD	1	1	Boston	WPGC	1	1	Houston	WJMN	1	1	Miami	WPOW	1	1	Seattle	KUBE	1	1	San Diego	XHTZ	1	1	Balt.	WERQ	1	1	Phoenix	KKFR	1	1	Denver	KQKS	1	1	Rivers.	KGCI	1	1	<table border="1"> <thead> <tr><th>City</th><th>Station</th><th>Plays</th><th>Gain</th></tr> </thead> <tbody> <tr><td>New York</td><td>BET</td><td>1</td><td>1</td></tr> <tr><td>New York</td><td>MTV</td><td>1</td><td>1</td></tr> <tr><td>New York</td><td>WKUT</td><td>1</td><td>1</td></tr> <tr><td>New York</td><td>WQHT</td><td>1</td><td>1</td></tr> <tr><td>L.A.</td><td>KPWR</td><td>1</td><td>1</td></tr> <tr><td>Chicago</td><td>WBWB</td><td>1</td><td>1</td></tr> <tr><td>San Fran.</td><td>KMEL</td><td>1</td><td>1</td></tr> <tr><td>Wash., DC</td><td>KYLD</td><td>1</td><td>1</td></tr> <tr><td>Boston</td><td>WPGC</td><td>1</td><td>1</td></tr> <tr><td>Houston</td><td>WJMN</td><td>1</td><td>1</td></tr> <tr><td>Miami</td><td>WPOW</td><td>1</td><td>1</td></tr> <tr><td>Seattle</td><td>KUBE</td><td>1</td><td>1</td></tr> <tr><td>San Diego</td><td>XHTZ</td><td>1</td><td>1</td></tr> <tr><td>Balt.</td><td>WERQ</td><td>1</td><td>1</td></tr> <tr><td>Phoenix</td><td>KKFR</td><td>1</td><td>1</td></tr> <tr><td>Denver</td><td>KQKS</td><td>1</td><td>1</td></tr> <tr><td>Rivers.</td><td>KGCI</td><td>1</td><td>1</td></tr> </tbody> </table>		City	Station	Plays	Gain	New York	BET	1	1	New York	MTV	1	1	New York	WKUT	1	1	New York	WQHT	1	1	L.A.	KPWR	1	1	Chicago	WBWB	1	1	San Fran.	KMEL	1	1	Wash., DC	KYLD	1	1	Boston	WPGC	1	1	Houston	WJMN	1	1	Miami	WPOW	1	1	Seattle	KUBE	1	1	San Diego	XHTZ	1	1	Balt.	WERQ	1	1	Phoenix	KKFR	1	1	Denver	KQKS	1	1	Rivers.	KGCI	1	1	<table border="1"> <thead> <tr><th>City</th><th>Station</th><th>Plays</th><th>Gain</th></tr> </thead> <tbody> <tr><td>New York</td><td>BET</td><td>1</td><td>1</td></tr> <tr><td>New York</td><td>MTV</td><td>1</td><td>1</td></tr> <tr><td>New York</td><td>WKUT</td><td>1</td><td>1</td></tr> <tr><td>New York</td><td>WQHT</td><td>1</td><td>1</td></tr> <tr><td>L.A.</td><td>KPWR</td><td>1</td><td>1</td></tr> <tr><td>Chicago</td><td>WBWB</td><td>1</td><td>1</td></tr> <tr><td>San Fran.</td><td>KMEL</td><td>1</td><td>1</td></tr> <tr><td>Wash., DC</td><td>KYLD</td><td>1</td><td>1</td></tr> <tr><td>Boston</td><td>WPGC</td><td>1</td><td>1</td></tr> <tr><td>Houston</td><td>WJMN</td><td>1</td><td>1</td></tr> <tr><td>Miami</td><td>WPOW</td><td>1</td><td>1</td></tr> <tr><td>Seattle</td><td>KUBE</td><td>1</td><td>1</td></tr> <tr><td>San Diego</td><td>XHTZ</td><td>1</td><td>1</td></tr> <tr><td>Balt.</td><td>WERQ</td><td>1</td><td>1</td></tr> <tr><td>Phoenix</td><td>KKFR</td><td>1</td><td>1</td></tr> <tr><td>Denver</td><td>KQKS</td><td>1</td><td>1</td></tr> <tr><td>Rivers.</td><td>KGCI</td><td>1</td><td>1</td></tr> </tbody> </table>		City	Station	Plays	Gain	New York	BET	1	1	New York	MTV	1	1	New York	WKUT	1	1	New York	WQHT	1	1	L.A.	KPWR	1	1	Chicago	WBWB	1	1	San Fran.	KMEL	1	1	Wash., DC	KYLD	1	1	Boston	WPGC	1	1	Houston	WJMN	1	1	Miami	WPOW	1	1	Seattle	KUBE	1	1	San Diego	XHTZ	1	1	Balt.	WERQ	1	1	Phoenix	KKFR	1	1	Denver	KQKS	1	1	Rivers.	KGCI	1	1
City	Station	Plays	Gain																																																																																																																																																																																																																																																																																																				
New York	BET	1	1																																																																																																																																																																																																																																																																																																				
New York	MTV	1	1																																																																																																																																																																																																																																																																																																				
New York	WKUT	1	1																																																																																																																																																																																																																																																																																																				
New York	WQHT	1	1																																																																																																																																																																																																																																																																																																				
L.A.	KPWR	1	1																																																																																																																																																																																																																																																																																																				
Chicago	WBWB	1	1																																																																																																																																																																																																																																																																																																				
San Fran.	KMEL	1	1																																																																																																																																																																																																																																																																																																				
Wash., DC	KYLD	1	1																																																																																																																																																																																																																																																																																																				
Boston	WPGC	1	1																																																																																																																																																																																																																																																																																																				
Houston	WJMN	1	1																																																																																																																																																																																																																																																																																																				
Miami	WPOW	1	1																																																																																																																																																																																																																																																																																																				
Seattle	KUBE	1	1																																																																																																																																																																																																																																																																																																				
San Diego	XHTZ	1	1																																																																																																																																																																																																																																																																																																				
Balt.	WERQ	1	1																																																																																																																																																																																																																																																																																																				
Phoenix	KKFR	1	1																																																																																																																																																																																																																																																																																																				
Denver	KQKS	1	1																																																																																																																																																																																																																																																																																																				
Rivers.	KGCI	1	1																																																																																																																																																																																																																																																																																																				
City	Station	Plays	Gain																																																																																																																																																																																																																																																																																																				
New York	BET	1	1																																																																																																																																																																																																																																																																																																				
New York	MTV	1	1																																																																																																																																																																																																																																																																																																				
New York	WKUT	1	1																																																																																																																																																																																																																																																																																																				
New York	WQHT	1	1																																																																																																																																																																																																																																																																																																				
L.A.	KPWR	1	1																																																																																																																																																																																																																																																																																																				
Chicago	WBWB	1	1																																																																																																																																																																																																																																																																																																				
San Fran.	KMEL	1	1																																																																																																																																																																																																																																																																																																				
Wash., DC	KYLD	1	1																																																																																																																																																																																																																																																																																																				
Boston	WPGC	1	1																																																																																																																																																																																																																																																																																																				
Houston	WJMN	1	1																																																																																																																																																																																																																																																																																																				
Miami	WPOW	1	1																																																																																																																																																																																																																																																																																																				
Seattle	KUBE	1	1																																																																																																																																																																																																																																																																																																				
San Diego	XHTZ	1	1																																																																																																																																																																																																																																																																																																				
Balt.	WERQ	1	1																																																																																																																																																																																																																																																																																																				
Phoenix	KKFR	1	1																																																																																																																																																																																																																																																																																																				
Denver	KQKS	1	1																																																																																																																																																																																																																																																																																																				
Rivers.	KGCI	1	1																																																																																																																																																																																																																																																																																																				
City	Station	Plays	Gain																																																																																																																																																																																																																																																																																																				
New York	BET	1	1																																																																																																																																																																																																																																																																																																				
New York	MTV	1	1																																																																																																																																																																																																																																																																																																				
New York	WKUT	1	1																																																																																																																																																																																																																																																																																																				
New York	WQHT	1	1																																																																																																																																																																																																																																																																																																				
L.A.	KPWR	1	1																																																																																																																																																																																																																																																																																																				
Chicago	WBWB	1	1																																																																																																																																																																																																																																																																																																				
San Fran.	KMEL	1	1																																																																																																																																																																																																																																																																																																				
Wash., DC	KYLD	1	1																																																																																																																																																																																																																																																																																																				
Boston	WPGC	1	1																																																																																																																																																																																																																																																																																																				
Houston	WJMN	1	1																																																																																																																																																																																																																																																																																																				
Miami	WPOW	1	1																																																																																																																																																																																																																																																																																																				
Seattle	KUBE	1	1																																																																																																																																																																																																																																																																																																				
San Diego	XHTZ	1	1																																																																																																																																																																																																																																																																																																				
Balt.	WERQ	1	1																																																																																																																																																																																																																																																																																																				
Phoenix	KKFR	1	1																																																																																																																																																																																																																																																																																																				
Denver	KQKS	1	1																																																																																																																																																																																																																																																																																																				
Rivers.	KGCI	1	1																																																																																																																																																																																																																																																																																																				
City	Station	Plays	Gain																																																																																																																																																																																																																																																																																																				
New York	BET	1	1																																																																																																																																																																																																																																																																																																				
New York	MTV	1	1																																																																																																																																																																																																																																																																																																				
New York	WKUT	1	1																																																																																																																																																																																																																																																																																																				
New York	WQHT	1	1																																																																																																																																																																																																																																																																																																				
L.A.	KPWR	1	1																																																																																																																																																																																																																																																																																																				
Chicago	WBWB	1	1																																																																																																																																																																																																																																																																																																				
San Fran.	KMEL	1	1																																																																																																																																																																																																																																																																																																				
Wash., DC	KYLD	1	1																																																																																																																																																																																																																																																																																																				
Boston	WPGC	1	1																																																																																																																																																																																																																																																																																																				
Houston	WJMN	1	1																																																																																																																																																																																																																																																																																																				
Miami	WPOW	1	1																																																																																																																																																																																																																																																																																																				
Seattle	KUBE	1	1																																																																																																																																																																																																																																																																																																				
San Diego	XHTZ	1	1																																																																																																																																																																																																																																																																																																				
Balt.	WERQ	1	1																																																																																																																																																																																																																																																																																																				
Phoenix	KKFR	1	1																																																																																																																																																																																																																																																																																																				
Denver	KQKS	1	1																																																																																																																																																																																																																																																																																																				
Rivers.	KGCI	1	1																																																																																																																																																																																																																																																																																																				
NEW EDITION 261/212 <i>Hit Me Off (MCA)</i> Total Stations: 15		NO MERCY 235/13 <i>Where Do You Go (Arista)</i> Total Stations: 13		THE OUTHERE BROTHERS 127/8 <i>Boom Boom Boom (Aureus)</i> Total Stations: 20		OUTKAST 88/3 <i>Elevators (Me & You) (LaFace/Arista)</i> Total Stations: 6		THE TONY RICH PROJECT 260/89 <i>Like A Woman (LaFace/Arista)</i> Total Stations: 18																																																																																																																																																																																																																																																																																															
<table border="1"> <thead> <tr><th>City</th><th>Station</th><th>Plays</th><th>Gain</th></tr> </thead> <tbody> <tr><td>New York</td><td>BET</td><td>1</td><td>1</td></tr> <tr><td>New York</td><td>MTV</td><td>1</td><td>1</td></tr> <tr><td>New York</td><td>WKUT</td><td>1</td><td>1</td></tr> <tr><td>New York</td><td>WQHT</td><td>1</td><td>1</td></tr> <tr><td>L.A.</td><td>KPWR</td><td>1</td><td>1</td></tr> <tr><td>Chicago</td><td>WBWB</td><td>1</td><td>1</td></tr> <tr><td>San Fran.</td><td>KMEL</td><td>1</td><td>1</td></tr> <tr><td>Wash., DC</td><td>KYLD</td><td>1</td><td>1</td></tr> <tr><td>Boston</td><td>WPGC</td><td>1</td><td>1</td></tr> <tr><td>Houston</td><td>WJMN</td><td>1</td><td>1</td></tr> <tr><td>Miami</td><td>WPOW</td><td>1</td><td>1</td></tr> <tr><td>Seattle</td><td>KUBE</td><td>1</td><td>1</td></tr> <tr><td>San Diego</td><td>XHTZ</td><td>1</td><td>1</td></tr> <tr><td>Balt.</td><td>WERQ</td><td>1</td><td>1</td></tr> <tr><td>Phoenix</td><td>KKFR</td><td>1</td><td>1</td></tr> <tr><td>Denver</td><td>KQKS</td><td>1</td><td>1</td></tr> <tr><td>Rivers.</td><td>KGCI</td><td>1</td><td>1</td></tr> </tbody> </table>		City	Station	Plays	Gain	New York	BET	1	1	New York	MTV	1	1	New York	WKUT	1	1	New York	WQHT	1	1	L.A.	KPWR	1	1	Chicago	WBWB	1	1	San Fran.	KMEL	1	1	Wash., DC	KYLD	1	1	Boston	WPGC	1	1	Houston	WJMN	1	1	Miami	WPOW	1	1	Seattle	KUBE	1	1	San Diego	XHTZ	1	1	Balt.	WERQ	1	1	Phoenix	KKFR	1	1	Denver	KQKS	1	1	Rivers.	KGCI	1	1	<table border="1"> <thead> <tr><th>City</th><th>Station</th><th>Plays</th><th>Gain</th></tr> </thead> <tbody> <tr><td>New York</td><td>BET</td><td>1</td><td>1</td></tr> <tr><td>New York</td><td>MTV</td><td>1</td><td>1</td></tr> <tr><td>New York</td><td>WKUT</td><td>1</td><td>1</td></tr> <tr><td>New York</td><td>WQHT</td><td>1</td><td>1</td></tr> <tr><td>L.A.</td><td>KPWR</td><td>1</td><td>1</td></tr> <tr><td>Chicago</td><td>WBWB</td><td>1</td><td>1</td></tr> <tr><td>San Fran.</td><td>KMEL</td><td>1</td><td>1</td></tr> <tr><td>Wash., DC</td><td>KYLD</td><td>1</td><td>1</td></tr> <tr><td>Boston</td><td>WPGC</td><td>1</td><td>1</td></tr> <tr><td>Houston</td><td>WJMN</td><td>1</td><td>1</td></tr> <tr><td>Miami</td><td>WPOW</td><td>1</td><td>1</td></tr> <tr><td>Seattle</td><td>KUBE</td><td>1</td><td>1</td></tr> <tr><td>San Diego</td><td>XHTZ</td><td>1</td><td>1</td></tr> <tr><td>Balt.</td><td>WERQ</td><td>1</td><td>1</td></tr> <tr><td>Phoenix</td><td>KKFR</td><td>1</td><td>1</td></tr> <tr><td>Denver</td><td>KQKS</td><td>1</td><td>1</td></tr> <tr><td>Rivers.</td><td>KGCI</td><td>1</td><td>1</td></tr> </tbody> </table>		City	Station	Plays	Gain	New York	BET	1	1	New York	MTV	1	1	New York	WKUT	1	1	New York	WQHT	1	1	L.A.	KPWR	1	1	Chicago	WBWB	1	1	San Fran.	KMEL	1	1	Wash., DC	KYLD	1	1	Boston	WPGC	1	1	Houston	WJMN	1	1	Miami	WPOW	1	1	Seattle	KUBE	1	1	San Diego	XHTZ	1	1	Balt.	WERQ	1	1	Phoenix	KKFR	1	1	Denver	KQKS	1	1	Rivers.	KGCI	1	1	<table border="1"> <thead> <tr><th>City</th><th>Station</th><th>Plays</th><th>Gain</th></tr> </thead> <tbody> <tr><td>New York</td><td>BET</td><td>1</td><td>1</td></tr> <tr><td>New York</td><td>MTV</td><td>1</td><td>1</td></tr> <tr><td>New York</td><td>WKUT</td><td>1</td><td>1</td></tr> <tr><td>New York</td><td>WQHT</td><td>1</td><td>1</td></tr> <tr><td>L.A.</td><td>KPWR</td><td>1</td><td>1</td></tr> <tr><td>Chicago</td><td>WBWB</td><td>1</td><td>1</td></tr> <tr><td>San Fran.</td><td>KMEL</td><td>1</td><td>1</td></tr> <tr><td></td></tr></tbody></table>		City	Station	Plays	Gain	New York	BET	1	1	New York	MTV	1	1	New York	WKUT	1	1	New York	WQHT	1	1	L.A.	KPWR	1	1	Chicago	WBWB	1	1	San Fran.	KMEL	1	1																																																																																																																		
City	Station	Plays	Gain																																																																																																																																																																																																																																																																																																				
New York	BET	1	1																																																																																																																																																																																																																																																																																																				
New York	MTV	1	1																																																																																																																																																																																																																																																																																																				
New York	WKUT	1	1																																																																																																																																																																																																																																																																																																				
New York	WQHT	1	1																																																																																																																																																																																																																																																																																																				
L.A.	KPWR	1	1																																																																																																																																																																																																																																																																																																				
Chicago	WBWB	1	1																																																																																																																																																																																																																																																																																																				
San Fran.	KMEL	1	1																																																																																																																																																																																																																																																																																																				
Wash., DC	KYLD	1	1																																																																																																																																																																																																																																																																																																				
Boston	WPGC	1	1																																																																																																																																																																																																																																																																																																				
Houston	WJMN	1	1																																																																																																																																																																																																																																																																																																				
Miami	WPOW	1	1																																																																																																																																																																																																																																																																																																				
Seattle	KUBE	1	1																																																																																																																																																																																																																																																																																																				
San Diego	XHTZ	1	1																																																																																																																																																																																																																																																																																																				
Balt.	WERQ	1	1																																																																																																																																																																																																																																																																																																				
Phoenix	KKFR	1	1																																																																																																																																																																																																																																																																																																				
Denver	KQKS	1	1																																																																																																																																																																																																																																																																																																				
Rivers.	KGCI	1	1																																																																																																																																																																																																																																																																																																				
City	Station	Plays	Gain																																																																																																																																																																																																																																																																																																				
New York	BET	1	1																																																																																																																																																																																																																																																																																																				
New York	MTV	1	1																																																																																																																																																																																																																																																																																																				
New York	WKUT	1	1																																																																																																																																																																																																																																																																																																				
New York	WQHT	1	1																																																																																																																																																																																																																																																																																																				
L.A.	KPWR	1	1																																																																																																																																																																																																																																																																																																				
Chicago	WBWB	1	1																																																																																																																																																																																																																																																																																																				
San Fran.	KMEL	1	1																																																																																																																																																																																																																																																																																																				
Wash., DC	KYLD	1	1																																																																																																																																																																																																																																																																																																				
Boston	WPGC	1	1																																																																																																																																																																																																																																																																																																				
Houston	WJMN	1	1																																																																																																																																																																																																																																																																																																				
Miami	WPOW	1	1																																																																																																																																																																																																																																																																																																				
Seattle	KUBE	1	1																																																																																																																																																																																																																																																																																																				
San Diego	XHTZ	1	1																																																																																																																																																																																																																																																																																																				
Balt.	WERQ	1	1																																																																																																																																																																																																																																																																																																				
Phoenix	KKFR	1	1																																																																																																																																																																																																																																																																																																				
Denver	KQKS	1	1																																																																																																																																																																																																																																																																																																				
Rivers.	KGCI	1	1																																																																																																																																																																																																																																																																																																				
City	Station	Plays	Gain																																																																																																																																																																																																																																																																																																				
New York	BET	1	1																																																																																																																																																																																																																																																																																																				
New York	MTV	1	1																																																																																																																																																																																																																																																																																																				
New York	WKUT	1	1																																																																																																																																																																																																																																																																																																				
New York	WQHT	1	1																																																																																																																																																																																																																																																																																																				
L.A.	KPWR	1	1																																																																																																																																																																																																																																																																																																				
Chicago	WBWB	1	1																																																																																																																																																																																																																																																																																																				
San Fran.	KMEL	1	1																																																																																																																																																																																																																																																																																																				



POWER PLAYLISTS

For Week Ending July 7, 1996



Playlists supplied by Broadcast Data Systems. Radio Track service. Stations selected from panel of leading broadcasters in 125 radio markets. electronically monitored 24 hours a day, 7 days a week. Songs ranked by number of plays in monitored week.

WPLJ PD: Scott Shannon APD/MD: Mike Preston. List of 30 songs including 'Los Del Rio, Macarena' and 'Gin Blossoms, Follow You Down'.

MIX 105 PD: Steve Weed APD/MD: Linda Silver. List of 30 songs including 'Alanis Morissette, You Learn' and 'The Tony Rich Project, Nobody Knows'.

STAR 98.7 PD: Dave Beasing MD: Angela Perrelli. List of 30 songs including 'Dishwalla, Counting Blue Cars' and 'Mariah Carey, Always Be My Baby'.

STAR 104.5 PD: Chuck Knight MD: Rich Davis. List of 30 songs including 'Mariah Carey, Always Be My Baby' and 'Hootie & The Blowfish, Old Man & Me'.

MIX 101.9 PD: Barry James APD/MD: Jaime Kartak. List of 30 songs including 'Gin Blossoms, Follow You Down' and 'Alanis Morissette, Ironc'.

WPNT PD: Lorrin Palagi APD/MD: Lyane Murray. List of 30 songs including 'Celine Dion, Because You Loved Me' and 'Hootie & The Blowfish, Time'.

MIX 107.3 OM/PD: Randy James MD: Carol Parker. List of 30 songs including 'Gin Blossoms, Follow You Down' and 'Alanis Morissette, You Learn'.

Q95.5 PD: Tom O'Brien MD: Fred Buchalter. List of 30 songs including 'Celine Dion, Because You Loved Me' and 'Hootie & The Blowfish, Old Man & Me'.

MIX 98.5 PD: Greg Strassel APD/MD: Tim Richards. List of 30 songs including 'Los Del Rio, Macarena' and 'Mariah Carey, Always Be My Baby'.

MIX 96.5 PD: Pat Paxton MD: Rich Anhorn. List of 30 songs including 'Natalie Merchant, Jalousy' and 'Hootie & The Blowfish, Old Man & Me'.

KS95 PD: Bob Davis MD: Leighton Peck. List of 30 songs including 'Fugees, Killing Me Softly' and 'Dog's Eye View, Everything Falls Apart'.

Q104 PD: Mary Ellen Kachinsky. List of 30 songs including 'Tracy Chapman, Give Me One Reason' and 'Jann Arden, Insensitive'.

MIX 102.9 APD/MD: Kim Ashley. List of 30 songs including 'Tracy Chapman, Give Me One Reason' and 'Blues Traveler, Run Around'.

KYKY PD: Smokey Rivers MD: Greg Hewitt. List of 30 songs including 'Celine Dion, Because You Loved Me' and 'Hootie & The Blowfish, Old Man & Me'.

STAR 101.5 OM: Rob Dunlop PD: Kent Phillips. List of 30 songs including 'Tracy Chapman, Give Me One Reason' and 'Alanis Morissette, Ironc'.

MIX 105.1 PD: David Isreal MD: Tim Baldwin. List of 30 songs including 'Gin Blossoms, Follow You Down' and 'Del Amitri, Roll To Me'.

Q106 PD: Greg Stevens APD: Ray Kalusa. List of 30 songs including 'Specials, A Little Bit Me, A Little Bit You' and 'Eric Clapton, Change The World'.

MIX 106.5 Acting PD: David Moore MD: Steve Cross. List of 30 songs including 'Alanis Morissette, Ironc' and 'Celine Dion, Because You Loved Me'.

MIX 96 PD: Mike Reeves MD: Yvonne Bass. List of 30 songs including 'Tracy Chapman, Give Me One Reason' and 'Gin Blossoms, Follow You Down'.

VARIETY 96 PD: Bruce Gilbert MD: Scott Alexander. List of 30 songs including 'Eric Clapton, Change The World' and 'Celine Dion, Because You Loved Me'.

WBLI PD: Stefan Rybak MD: Al Levine. List of 30 songs including 'Tracy Chapman, Give Me One Reason' and 'Los Del Rio, Macarena'.

WKTI PD: Danny Clayton MD: Leonard Peace. List of 30 songs including 'Tracy Chapman, Give Me One Reason' and 'Natalie Merchant, Wonder'.

WSHE PD/MD: Dave Stewart. List of 30 songs including 'Primitive Radio Gods, Standing Outside A Broken Heart' and 'Bodeans, Closer To Free'.

SUNNY 107.9 PD: John McFadden MD: Arroe Collins. List of 30 songs including 'Natalie Merchant, Wonder' and 'Tracy Chapman, Give Me One Reason'.

BDS IMPACT

★ ★ ★ **AIRPOWER** ★ ★ ★
(Minimum 600 detections for the first time)

Total Plays/Gain

JEWEL 633/68

Who Will Save Your Soul (Atlantic)

Total Stations: 30/Chart Move: 21-17
Heavy (30+ plays): 6 KJMZ, KKLO, KSTP, KYSR, WSHE, WWSN
Medium (15-29): 16 KFMB, KHMV, KKOB, KPLZ, KSTZ, KYKY, WBLI, WBMX, WKDD, WKTI, WMXV, WQLH, WRQX, WTMX, WWMX, WZPK
Light (Under 15): 8
New Airplay This Week: 1 KPLZ

AIRPOWER BOUND

Total Plays/Gain

FUGEES 584/58

Killing Me Softly (Ruffhouse/Columbia)

Total Stations: 24/Chart Move: 23-20
Heavy (30+ plays): 10 KBKS, KSII, KSTP, WBLI, WKQI, WKTI, WQLH, WWDE, WYXR, WZPK
Medium (15-29): 5 KYKY, WAEV, WIVY, WMC, WUSA
Light (Under 15): 9
New Airplay This Week: 1 WKZL

DONNA LEWIS 555/131

I Love You Always Forever (Atlantic)

Total Stations: 26/Chart Move: 28-21
Heavy (30+): 5 KBKS, KFMB, KJMZ, KKLO, KYSR
Medium (15-29): 13 KHMV, KKOB, KPLZ, WKDD, WKTI, WMC, WMXS, WMXV, WQLH, WWMX, WWSN, WYXR, WZPK
Light (Under 15): 8
New Airplay This Week: 3 WKQI, WQLH, WYXR

ROBERT MILES 508/41

Children (Arista)

Total Stations: 31/Chart Move: 26-23
Heavy (30+): 5 KSII, WKDD, WQLH, WVAF, WZPK
Medium (15-29): 11 KHMV, KSTP, WBLI, WKQI, WKTI, WKZL, WMTX, WMXL, WMXV, WUSA, WWSN
Light (Under 15): 15
New Airplay This Week: 2 KSTP, WMXL

LOS DEL RIO 494/5

Macarena (Bayside Boys Mix) (RCA)

Total Stations: 26/Chart Move: 25-24
Heavy (30+): 9 KFMB, KYSR, WBLI, WBMX, WKDD, WKTI, WPLJ, WYXR, WZPK
Medium (15-29): 7 KKLQ, KKOB, KYKY, WKQI, WMTX, WQLH, WUSA
Light (Under 15): 10
New Airplay This Week: 1 WPNT

MARIAH CAREY 399/94

Forever (Columbia)

Total Stations: 28/Chart Move: 32-25
Heavy (30+): 1 WQAL
Medium (15-29): 12 KBKS, KISN, KKOB, KYKY, WBLI, WBMX, WKDD, WKQI, WQLH, WVAF, WWDE, WWSN
Light (Under 15): 15
New Airplay This Week: 7 KSII, WKDD, WMTX, WMXS, WQLH, WWDE, WYYY

COLOR ME BADD 359/16

The Earth, The Sun, The Rain (Giant)

Total Stations: 21/Chart Move: 30-27
Heavy (30+): 3 KSII, WQLH, WZPK
Medium (15-29): 8 KKOB, WKDD, WKTI, WMXS, WMYI, WUSA, WWSN, WYXR
Light (Under 15): 10

HOOTIE & THE BLOWFISH 276/149

Tucker's Town (Atlantic)

Total Stations: 18/Chart Move: Debut 31
Heavy (30+): 1 WTMX
Medium (15-29): 7 KHMV, KKLO, WKDD, WKQI, WQLH, WSHE, WWSN
Light (Under 15): 10
New Airplay This Week: 8 WCSO, WKDD, WKQI, WMXB, WMXV, WMYI, WSHE, WZPK

DISHWALLA 271/73

Counting Blue Cars (A&M)

Total Stations: 19/Chart Move: 40-32
Heavy (30+): 2 KKLQ, KYSR
Medium (15-29): 6 KHMV, KSTZ, WMC, WMXV, WSHE, WWMX
Light (Under 15): 11
New Airplay This Week: 4 KSTZ, WBMX, WMC, WUSA

OASIS 243/26

Champagne Supernova (Epic)

Total Stations: 18/Chart Move: 39-33
Heavy (30+): 4 KFMB, KKLO, KYSR, WZPK
Medium (15-29): 0
Light (Under 15): 14
New Airplay This Week: 1 WKDD

THE BADLEES 235/16

Angeline Is Coming Home (Polydor/A&M)

Total Stations: 18/Chart Move: 38-35
Heavy (30+): 1 KYSR
Medium (15-29): 6 KHMV, KKLO, WKTI, WMXV, WQLH, WTMX
Light (Under 15): 11
New Airplay This Week: 2 WUSA, WWSN

LA BOUCHE 191/28

Sweet Dreams (RCA)

Total Stations: 11/Chart Move: Re-Entry 39
Heavy (30+): 4 KBKS, WQLH, WYXR, WZPK
Medium (15-29): 1 WKDD
Light (Under 15): 6

PRIMITIVE RADIO GODS 180/44

Standing Outside A Broken Phone Booth... (Ergo/Columbia)

Total Stations: 7/Chart Move: Debut 40
Heavy (30+): 3 KFMB, KKLO, WSHE
Medium (15-29): 0
Light (Under 15): 4
New Airplay This Week: 2 KJMZ, WUSA

CHART BOUND

Total Plays/Gain

THE SPECIALS 160/6

A Little Bit Me, A Little Bit You (Virgin)

Total Stations: 6
Heavy (30+): 3 KKLQ, KYSR, WQLH
Medium (15-29): 1 WSHE
Light (Under 15): 2
New Airplay This Week: 1 KYSR

MAXI PRIEST FEAT. SHAGGY 149/33

That Girl (Virgin)

Total Stations: 6
Heavy (30+): 2 KKLQ, WQLH
Medium (15-29): 1 WKTI
Light (Under 15): 3

THE SMASHING PUMPKINS 118/25

Tonight, Tonight (Virgin)

Total Stations: 4
Heavy (30+): 3 KFMB, KKLO, WSHE
Medium (15-29): 0
Light (Under 15): 1

MOST NEW AIRPLAY THIS WEEK

No. Of Stations

HOOTIE & THE BLOWFISH 8

Tucker's Town (Atlantic)

MARIAH CAREY 7

Forever (Columbia)

THE CRANBERRIES 5

Free To Decide (Island)

DISHWALLA 4

Counting Blue Cars (A&M)

BLUES TRAVELER 3

But Anyway (A&M)

DONNA LEWIS 3

I Love You Always Forever (Atlantic)

NATALIE MERCHANT 3

Jealousy (Elektra/EEG)

★ **THE CRANBERRIES 116/97**

Free To Decide (Island)

Total Stations: 8
Heavy (30+): 1 KKLQ
Medium (15-29): 2 KHMV, WQLH
Light (Under 15): 5
New Airplay This Week: 5 KHMV, WKDD, WKTI, WMC, WQLH

EVERYTHING BUT THE GIRL 114/6

Wrong (Atlantic)

Total Stations: 12
Heavy (30+): 1 KKLQ
Medium (15-29): 3 KHMV, WMXV, WZPK
Light (Under 15): 8

TINA ARENA 97/34

Show Me Heaven (Epic)

Total Stations: 8
Heavy (30+): 0
Medium (15-29): 2 WMXS, WQLH
Light (Under 15): 6
New Airplay This Week: 2 WBMX, WRQX

BLESSID UNION OF SOULS 87/16

All Along (EMI)

Total Stations: 9
Heavy (30+): 0
Medium (15-29): 3 WMXV, WQLH, WZPK
Light (Under 15): 6

JORDAN HILL 85/1

For The Love Of You (143/Atlantic)

Total Stations: 4
Heavy (30+): 1 WQLH
Medium (15-29): 1 KSII
Light (Under 15): 2

LISA LOEB & NINE STORIES 75/5

Waiting For Wednesday (Geffen)

Total Stations: 5
Heavy (30+): 0
Medium (15-29): 3 KKLQ, WQLH, WTMX
Light (Under 15): 2

MICHAEL ENGLISH 73/15

Your Love Amazes Me (Curb)

Total Stations: 4
Heavy (30+): 1 WVAF
Medium (15-29): 2 WMXS, WMYI
Light (Under 15): 1

★ **HARRY CONNICK, JR. 72/30**

Hear Me In The Harmony (Columbia)

Total Stations: 9
Heavy (30+): 0
Medium (15-29): 2 WKTI, WMC
Light (Under 15): 7
New Airplay This Week: 2 WMC, WZPK

FUGEES 72/17

No Woman, No Cry (Ruffhouse/Columbia)

Total Stations: 3
Heavy (30+): 1 WSHE

THIS WEEK	LAST WEEK	WEEKS ON	TITLE/LABEL	ARTIST	TW	LW	DETECTIONS	
			★ ★ ★ No. 1 ★ ★ ★					
1	1	16	GIVE ME ONE REASON ELEKTRA/EEG 4 weeks at No. 1	TRACY CHAPMAN	1729	1745		
2	2	21	BECAUSE YOU LOVED ME 550 MUSIC	CELINE DION	1464	1530		
3	3	5	CHANGE THE WORLD REPRISE	ERIC CLAPTON	1350	1303		
4	4	20	FOLLOW YOU DOWN A&M	GIN BLOSSOMS	1185	1282		
5	5	20	IRONIC MAVERICK/REPRISE	ALANIS MORISSETTE	1057	1108		
6	6	31	WONDER ELEKTRA/EEG	NATALIE MERCHANT	1044	1077		
7	8	9	YOU LEARN MAVERICK/REPRISE	ALANIS MORISSETTE	1038	1008		
8	10	27	INSENSITIVE A&M	JANN ARDEN	1023	970		
9	11	25	NOBODY KNOWS LAFACE/ARISTA	THE TONY RICH PROJECT	1014	968		
10	9	19	ALWAYS BE MY BABY COLUMBIA	MARIAH CAREY	927	991		
11	7	14	OLD MAN & ME (WHEN I GET TO HEAVEN) ATLANTIC	HOOTIE & THE BLOWFISH	905	1055		
12	13	41	NAME METAL BLA/OE/WARNER BROS.	GOO GOO DOLLS	759	723		
13	12	59	RUN AROUND A&M	BLUES TRAVELER	735	756		
14	14	23	CLOSER TO FREE SLASH/REPRISE	BODEANS	715	717		
15	16	8	JEALOUSY ELEKTRA/EEG	NATALIE MERCHANT	700	670		
16	15	49	ROLL TO ME A&M	DEL AMITRI	670	705		
17	21	8	★ ★ ★ AIRPOWER ★ ★ ★					
			WHO WILL SAVE YOUR SOUL ATLANTIC	JEWEL	633	565		
18	18	18	EVERYTHING FALLS APART COLUMBIA	DOG'S EYE VIEW	613	625		
19	20	11	YOU STILL TOUCH ME A&M	STING	609	614		
20	23	7	KILLING ME SOFTLY RUFFHOUSE/COLUMBIA	FUGEES	584	526		
21	28	4	I LOVE YOU ALWAYS FOREVER ATLANTIC	DONNA LEWIS	555	424		
22	22	24	THE WORLD I KNOW ATLANTIC	COLLECTIVE SOUL	533	556		
23	26	9	CHILDREN ARISTA	ROBERT MILES	508	467		
24	25	7	MACARENA (BAYSIDE BOYS MIX) RCA	LOS DEL RIO	494	489		
25	32	3	FOREVER COLUMBIA	MARIAH CAREY	399	305		
26	27	8	THE ONLY THING THAT LOOKS GOOD ON ME IS YOU A&M	BRYAN ADAMS	388	426		
27	30	7	THE EARTH, THE SUN, THE RAIN GIANT	COLOR ME BADD	359	343		
28	24	12	FAST LOVE OREAMWORKS/GEFFEN	GEORGE MICHAEL	345	509		
29	31	5	ONE BY ONE REPRISE	CHER	318	335		
30	34	24	HDOK A&M	BLUES TRAVELER	284	288		
31	NEW ▶		TUCKER'S TOWN ATLANTIC	HOOTIE & THE BLOWFISH	276	127		
32	40	2	COUNTING BLUE CARS A&M	DISHWALLA	271	198		
33	39	3	CHAMPAGNE SUPERNOVA EPIC	OASIS	243	217		
34	29	15	BIG ME ROSWELL/CAPITOL	FOO FIGHTERS	238	359		
35	38	2	ANGELINE IS COMING HOME POLYOR/A&M	THE BADLEES	235	219		
36	36	13	REACH EPIC	GLORIA ESTEFAN	231	243		
37	35	11	FLOOD ESSENTIAL/SILVERTONE/JIVE	JARS OF CLAY	227	276		
38	37	21	1979 VIRGIN	THE SMASHING PUMPKINS	219	241		
39	RE-ENTRY		SWEET DREAMS RCA	LA BOUCHE	191	163		
40	NEW ▶		STANDING OUTSIDE A BROKEN PHONE BOOTH... ERGO/COLUMBIA	PRIMITIVE RADIO GODS	180	136		

Records showing an increase in detections over the previous week, regardless of chart movement. A record which has been on the chart for more than 20 weeks will not receive a bullet, even if it registers an increase in detections. Airpower awarded to those records which attain 600 detections for the first time. If two records are tied in number of plays, the record being played on more stations is placed first. Records below the top 20 are removed from the chart after 26 weeks. © 1996, Billboard/BPI Communications.

Medium (15-29): 2 KFMB, WYXR
Light (Under 15): 0
New Airplay This Week: 1 KFMB

★ **GIN BLOSSOMS 61/40**
As Long As It Matters (A&M)

Total Stations: 5
Heavy (30+): 1 KKLQ
Medium (15-29): 1 KHMV
Light (Under 15): 3

★ **BLUES TRAVELER 57/34**
But Anyway (A&M)

Total Stations: 4
Heavy (30+): 0
Medium (15-29): 2 KSTZ, KYSR
Light (Under 15): 2
New Airplay This Week: 3 KSTZ, KYSR, WZPK

PUFF JOHNSON 55/4

Forever More (Work)

Total Stations: 9
Heavy (30+): 0
Medium (15-29): 2 KSII, WQLH
Light (Under 15): 7

★ **LE CLICK 50/15**

Tonight Is The Night (Logic)

Total Stations: 3
Heavy (30+): 1 WYXR
Medium (15-29): 0
Light (Under 15): 2
New Airplay This Week: 1 WQLH

ADULT TOP 40

ADULT CONTEMPORARY

THE BADLIES 235/16 Angelina Is Coming Home (Polydor/A&M) Total Stations: 18 Chart Move: 38-35

MARIAH CAREY 399/94 Forever (Columbia) Total Stations: 28 Chart Move: 32-25

ERIC CLAPTON 1350/47 Change The World (Reprise) Total Stations: 44 Chart Move: 3-3

ALL-4-ONE 259/38 Someday (Walt Disney/Hollywood) Total Stations: 21 Chart Move: 26-23

MARIAH CAREY 434/117 Forever (Columbia) Total Stations: 35 Chart Move: 22-12

COLOR ME BADD 359/16 The Earth, The Sun, The Rain (Giant) Total Stations: 21 Chart Move: 30-27

DISHWALLA 271/73 Counting Blue Cars (A&M) Total Stations: 19 Chart Move: 40-32

FUGEES 584/58 Killing Me Softly (Ruffhouse/Columbia) Total Stations: 24 Chart Move: 23-20

PETER CETERA 114/14 One Clear Voice (River North) Total Stations: 13

CHER 501/49 One By One (Reprise) Total Stations: 33 Chart Move: 10-9

HOOTIE & THE BLOWFISH 276/149 Tucker's Town (Atlantic) Total Stations: 18 Chart Move: Debut 31

JEWEL 633/68 Who Will Save Your Soul (Atlantic) Total Stations: 30 Chart Move: 21-17

LA BOUCHE 191/28 Sweet Dreams (RCA) Total Stations: 11 Chart Move: Re-Entry 39

ERIC CLAPTON 935/33 Change The World (Reprise) Total Stations: 41 Chart Move: 2-2

MICHAEL ENGLISH 394/9 Your Love Amazes Me (Curb) Total Stations: 28 Chart Move: 18-14

DONNA LEWIS 555/131 I Love You Always Forever (Atlantic) Total Stations: 26 Chart Move: 28-21

LOS DEL RIO 494/5 Macarena (Bayside Boys Mix) (RCA) Total Stations: 26 Chart Move: 25-24

NATALIE MERCHANT 700/30 Jealousy (Elektra/EEG) Total Stations: 37 Chart Move: 16-15

NATALIE MERCHANT 215/46 Jealousy (Elektra/EEG) Total Stations: 18 Chart Move: 27-26

ALANIS MORISSETTE 140/50 Ironic (Maverick/Reprise) Total Stations: 12 Chart Move: 36-28

ROBERT MILES 508/41 Children (Arista) Total Stations: 31 Chart Move: 26-23

ALANIS MORISSETTE 1038/30 You Learn (Maverick/Reprise) Total Stations: 42 Chart Move: 8-7

OASIS 243/26 Champagne Supernova (Epic) Total Stations: 18 Chart Move: 39-33

VANESSA WILLIAMS 563/140 Where Do We Go From Here (Mercury) Total Stations: 36 Chart Move: 13-8

WYNNONNA 180/34 To Be Loved By You (Curb/MCA) Total Stations: 21 Chart Move: 28-27

BDS IMPACT

AIRPOWER

NO RECORDS QUALIFIED FOR AIRPOWER THIS WEEK

AIRPOWER BOUND

ALL-4-ONE 259/38 Someday (Walt Disney/Hollywood)

NATALIE MERCHANT 215/46 Jealousy (Elektra/EEG)

WYNONNA 180/34 To Be Loved By You (Curb/MCA)

ALANIS MORISSETTE 140/50 Ironic (Maverick/Reprise)

CHART BOUND

PETER CETERA 114/14 One Clear Voice (River North)

MOST NEW AIRPLAY THIS WEEK

JIM BRICKMAN 7 Hero's Dream (Renegade/Windham Hill)

WHITNEY HOUSTON 6 Why Does It Hurt So Bad (Arista)

HARRY CONNICK, JR. 3 Hear Me In The Harmony (Columbia)

DEBORAH COX 3 Where Do We Go From Here (Arista)

ALANIS MORISSETTE 3 Ironic (Maverick/Reprise)

Medium (14-20): 0 Light (Under 14): 9 New Airplay This Week: 1 WLTF

DONNA LEWIS 68/28 I Love You Always Forever (Atlantic)

Medium (14-20): 1 WLAC Light (Under 14): 2 New Airplay This Week: 2 WAHR, WMJQ

COLOR ME BADD 56/7 The Earth, The Sun, The Rain (Giant)

Medium (14-20): 1 KURB Heavy (21+): 1 WJDX Light (Under 14): 7 New Airplay This Week: 1 WJDX

HARRY CONNICK, JR. 53/28 Hear Me In The Harmony (Columbia)

Medium (14-20): 10 Heavy (21+): 0 Medium (14-20): 0 Light (Under 14): 10 New Airplay This Week: 3 KIOI, WBEB, WLTS

DEBORAH COX 50/8 Where Do We Go From Here (Arista)

Medium (14-20): 0 Light (Under 14): 7 New Airplay This Week: 3 WAHR, WLEV, WLTE

WHITNEY HOUSTON 110/74 Why Does It Hurt So Bad (Arista)

Medium (14-20): 3 KESZ, WDOK, WLEV Light (Under 14): 9 New Airplay This Week: 1 WLTE

ROBERT MILES 94/20 Children (Arista)

Medium (14-20): 2 KVCU, WALK Light (Under 14): 8

BLESSID UNION OF SOULS 91/11 All Along (EMI)

Medium (14-20): 2 WLEV, WLIF Light (Under 14): 8

JIM BRICKMAN 86/72 Hero's Dream (Renegade/Windham Hill)

Medium (14-20): 2 KKCW, WAHR Light (Under 14): 9 New Airplay This Week: 7 KISC, KKCW, WAHR, WARM, WDEF, WLIF, WLIT

BRYAN ADAMS 81/9 The Only Thing That Looks Good On Me Is You (A&M)

Medium (14-20): 2 KEZR, KVCU Light (Under 14): 6

BODEANS 69/7 Closer To Free (Slash/Reprise)

Medium (14-20): 10 Heavy (21+): 1 KVCU

Table with columns: THIS WEEK, LAST WEEK, WEEKS ON, TITLE/LABEL, ARTIST, TW, LW. Contains chart data for various songs and artists.

Records showing an increase in detections over the previous week, regardless of chart movement. A record which has been on the chart for more than 20 weeks will not receive a bullet, even if it registers an increase in detections.

ADULT CONTEMPORARY POWER PLAYLISTS

Grid of 12 radio station playlists including KBIG, WLIT, B101, K101, SOFT ROCK 97.1, WDOK, WLTE, WALK, LITE ROCK 106-1/2, LITE 102, WISH 99.7, and KEZ 99.9.

Airpower awarded to those records which attain 300 detections for the first time. New airplay lists those stations registering six or more detections per week on a record for the first time.

POWER PLAYLISTS™

WXRK New York DM: Sam Milkman PD: Andre Gardner			KROQ Los Angeles PD: Kevin Weatherly APD: Gene Sandblom			WKQX Chicago PD: Bill Gamble APD/MD: Mary Shurminas		
TW	LW		TW	LW		TW	LW	
1	32	41	1	29	38	1	29	38
2	28	32	2	27	41	2	27	41
3	28	33	3	27	22	3	27	22
4	27	34	4	25	37	4	25	37
5	26	40	5	25	34	5	25	34
6	26	32	6	23	28	6	23	28
7	23	27	7	22	40	7	22	40
8	21	39	8	21	36	8	21	36
9	18	30	9	20	17	9	20	17
10	18	31	10	18	16	10	18	16
11	18	25	11	13	11	11	13	11
12	17	14	12	17	13	12	17	13
13	17	29	13	17	13	13	17	13
14	17	19	14	17	16	14	17	16
15	17	26	15	15	5	15	15	5
16	16	28	16	14	17	16	14	17
17	16	20	17	14	9	17	14	9
18	15	17	18	13	5	18	13	5
19	14	17	19	13	17	19	13	17
20	13	12	20	12	24	20	12	24
21	13	24	21	12	20	21	12	20
22	13	18	22	12	15	22	12	15
23	12	31	23	12	14	23	12	14
24	12	16	24	12	15	24	12	15
25	12	6	25	12	22	25	12	22
26	12	14	26	12	26	26	12	26
27	11	22	27	11	12	27	11	12
28	11	20	28	11	18	28	11	18
29	11	20	29	11	29	29	11	29
30	11	14	30	10	8	30	10	8

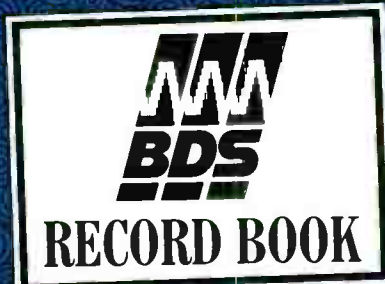
WPLY Philadelphia PD: Chuck Tisa			WBCN Boston VP/Prgrm: Dedipus MD: Carter Alan			WHFS Washington, DC PD: Robert Benjamin APD: Bob Waugh		
TW	LW		TW	LW		TW	LW	
1	44	46	1	40	40	1	35	39
2	44	45	2	39	38	2	35	37
3	44	46	3	39	38	3	33	36
4	44	46	4	37	34	4	33	36
5	33	27	5	37	34	5	30	33
6	33	27	6	33	31	6	27	34
7	32	29	7	33	17	7	26	26
8	32	31	8	30	28	8	25	34
9	32	17	9	28	27	9	25	16
10	32	27	10	28	25	10	22	25
11	31	29	11	26	27	11	20	22
12	31	25	12	25	18	12	20	22
13	30	30	13	24	32	13	20	20
14	30	28	14	21	14	14	20	20
15	30	28	15	21	26	15	20	24
16	30	5	16	20	16	16	19	8
17	30	30	17	20	17	17	19	20
18	29	25	18	20	18	18	19	29
19	29	23	19	20	18	19	17	22
20	29	28	20	19	21	20	16	0
21	28	21	21	19	22	21	16	12
22	27	23	22	19	22	22	16	12
23	27	33	23	19	11	23	16	12
24	26	24	24	18	15	24	16	19
25	26	24	25	18	17	25	14	19
26	26	28	26	18	20	26	14	19
27	23	21	27	18	17	27	14	17
28	20	24	28	17	19	28	12	20
29	19	15	29	17	21	29	12	16
30	17	15	30	17	14	30	12	14

KITS San Francisco VP/Prgrm.: Richard Sands MD: Roland West			KDGE Dallas PD: Joel Folger			WNNX Atlanta PD: Brian Philips APD: Leslie Fram		
TW	LW		TW	LW		TW	LW	
1	33	26	1	47	43	1	33	30
2	31	23	2	46	41	2	33	24
3	28	27	3	42	33	3	32	24
4	28	27	4	41	43	4	29	20
5	27	26	5	41	43	5	27	30
6	27	23	6	41	43	6	27	26
7	26	22	7	41	43	7	27	27
8	25	20	8	41	43	8	26	26
9	24	24	9	41	43	9	26	26
10	24	24	10	41	43	10	25	25
11	20	12	11	41	43	11	24	18
12	19	20	12	41	43	12	24	18
13	19	22	13	41	43	13	23	21
14	18	17	14	41	43	14	23	21
15	17	13	15	41	43	15	23	21
16	17	13	16	41	43	16	23	21
17	17	13	17	41	43	17	23	21
18	17	13	18	41	43	18	23	21
19	16	16	19	41	43	19	23	21
20	16	16	20	41	43	20	23	21
21	15	15	21	41	43	21	23	21
22	14	10	22	41	43	22	23	21
23	14	10	23	41	43	23	23	21
24	13	13	24	41	43	24	23	21
25	13	13	25	41	43	25	23	21
26	13	15	26	41	43	26	23	21
27	13	15	27	41	43	27	23	21
28	12	8	28	41	43	28	23	21
29	12	8	29	41	43	29	23	21
30	11	8	30	41	43	30	23	21

THIS WEEK	LAST WEEK	WKS. ON CHART	DETECTIONS	
			TW	LW
			*** NO. 1 ***	
1	1	10	2174	2196
2	2	7	2136	2124
3	3	10	1979	1982
4	4	7	1949	1880
5	7	13	1861	1831
6	5	8	1860	1864
7	9	6	1732	1671
8	6	16	1598	1852
9	8	9	1589	1674
10	17	4	1387	1287
11	18	3	1345	1285
12	10	11	1377	1662
13	12	5	1348	1342
14	11	16	1238	1477
15	20	3	1223	1170
16	16	8	1214	1294
17	15	12	1211	1303
18	22	5	1207	1142
19	14	15	1122	1307
20	19	13	1100	1233

Records showing an increase in detections over the previous week, regardless of chart movement. A record which has been on the chart for more than 20 weeks will not receive a bullet, even if it registers an increase in detections. Airpower awarded to those records which attain 1,100 detections for the first time. If two records are tied in number of plays, the record being played on more stations is placed first. ©1996, Billboard/BPI Communications.

WMMS Cleveland APD/MD: Doug Kubinski			WHYT Detroit PD: Garrett Michaels MD: Alex Tear			KEGE Minneapolis PD: John Lassman MD: Wade Linder		
TW	LW		TW	LW		TW	LW	
1	44	43	1	45	43	1	44	44
2	43	45	2	44	37	2	40	44
3	42	38	3	43	41	3	40	43
4	41	35	4	42	40	4	37	26
5	40	38	5	42	40	5	36	43
6	40	35	6	38	26	6	33	29
7	39	39	7	37	28	7	30	29
8	35	29	8	32	30	8	30	32
9	34	33	9	31	32	9	28	28
10	33	27	10	30	32	10	25	23
11	33	32	11	30	38	11	25	26
12	32	32	12	30	30	12	25	27
13	32	34	13	30	23	13	24	25
14	31	22	14	28	23	14	24	26
15	31	22	15	28	23	15	24	24
16	30	30	16	27	31	16	23	21
17	30	27	17	27	28	17	23	24
18	28	18	18	27	27	18	23	24
19	27	27	19	26	27	19	23	24
20	26	20	20	26	20	20	21	22
21	25	24	21	26	22	21	21	23
22	24	20	22	26	22	22	21	21
23	24	16	23	24	27	23	21	21
24	23	18	24	24	27	24	21	18
25	23	16	25	22	25	25	20	19
26	23	16	26	22	25	26	20	19
27	23	16	27	22	25	27	20	19
28	23	16	28	22	25	28	20	19
29	23	16	29	22	25	29	20	19
30	23	16	30	22	25	30	20	19



For The Week Ending July 7, 1996:
Most weeks at No. 1 on the Adult Contemporary Chart: "Because You Loved Me" by Celine Dion at 17 weeks.

COMBINED TOP 40 AIRPLAY										AIRPLAY THIS WEEK BY FORMAT																
TW	LW	WKS	TITLE (LABEL)	ARTIST	THIS WEEK			LAST WEEK			MAINSTREAM			RHYTHM			ADULT TOP 40			AC			MODERN			
					Audience (millions)	Detections No.	Rank	Audience (millions)	Detections No.	Rank	Audience (millions)	Detections No.	Rank	Audience (millions)	Detections No.	Rank	Audience (millions)	Detections No.	Rank	Audience (millions)	Detections No.	Rank	Audience (millions)	Detections No.	Rank	
1	2	10	YOU LEARN (MAVERICK/REPRISE)	ALANIS MORISSETTE	60.4803	6432	1	63.0306	6669	2	36.2172	4018	1	2.1090	231	40	14.2257	1038	7	0.1555	54	—	7.7729	1091	21	
2	3	14	GIVE ME ONE REASON (ELEKTRA/EEG)	TRACY CHAPMAN	59.4652	6318	2	62.8653	6728	1	28.0310	3321	3	0.6561	141	—	20.6724	1729	1	7.3885	826	3	2.7172	301	—	
3	1	18	BECAUSE YOU LOVED ME (550 MUSIC)	CELINE DION	55.9406	5534	3	65.1869	6170	3	20.8156	2363	7	7.4688	624	15	17.4956	1464	2	10.1606	1083	1	—	—	—	
4	4	18	KILLING ME SOFTLY (RUFFHOUSE/COLUMBIA)	FUGEES	54.4525	5168	4	61.4675	5630	4	31.3360	3455	2	15.7458	1003	6	6.3996	584	20	0.9711	126	30	—	—	—	
5	5	22	ALWAYS BE MY BABY (COLUMBIA)	MARIAH CAREY	46.3484	4425	5	54.9861	5104	5	18.1139	1986	14	10.2913	808	10	10.3645	927	10	7.5787	704	5	—	—	—	
6	6	25	IRONIC (MAVERICK/REPRISE)	ALANIS MORISSETTE	40.6762	3987	8	48.6730	4453	6	17.7552	2023	12	5.0222	448	20	13.9268	1057	5	1.2665	140	28	2.7055	319	—	
7	7	26	NOBODY KNOWS (LAFACE/ARISTA)	THE TONY RICH PROJECT	40.5734	3870	10	44.0078	4054	9	16.3788	1732	16	7.0431	391	—	11.4349	1014	9	5.7166	733	4	—	—	—	
8	8	5	CHANGE THE WORLD (REPRISE)	ERIC CLAPTON	38.7170	4336	6	36.8352	4068	8	13.2934	2006	13	0.1935	43	—	16.0080	1350	3	9.2157	935	2	0.0064	2	—	
9	9	9	WHO WILL SAVE YOUR SOUL (ATLANTIC)	JEWEL	36.1996	4309	7	35.5318	4093	7	18.3702	2429	5	0.0943	14	—	8.8643	633	17	0.0541	22	—	8.8167	1211	17	
10	11	13	INSENSITIVE (A&M)	JANN ARDEN	34.2603	3916	9	33.7305	3740	10	16.4608	2145	10	0.1924	43	—	11.5137	1023	8	6.0635	699	6	0.0299	6	—	
11	12	6	MACARENA (BAYSIDE BOYS MIX) (RCA)	LOS DEL RIO	32.7013	3612	11	33.4930	3475	11	15.6824	2387	6	8.5847	686	12	7.8875	494	24	0.5337	44	—	0.0130	1	—	
12	10	11	THA CROSSROADS (RUTHLESS/RELATIVITY)	BONE THUGS-N-HARMONY	31.7740	2878	19	34.5057	2908	19	9.0580	1381	23	22.7075	1479	1	0.0085	18	—	—	—	—	—	—	—	
13	13	7	YOU'RE MAKIN' ME HIGH (LAFACE/ARISTA)	TONI BRAXTON	28.6950	2921	18	30.6315	2766	23	8.6419	1433	22	18.9824	1337	2	1.0672	149	—	0.0035	2	—	—	—	—	
14	15	23	FOLLOW YOU DOWN (A&M)	GIN BLOSSOMS	28.3724	3018	17	30.1299	3237	13	10.3365	1326	24	0.0442	13	—	14.0887	1185	4	2.4039	270	22	1.4991	224	—	
15	19	6	COUNTING BLUE CARS (A&M)	DISHWALLA	28.0631	3357	12	25.7662	3116	16	10.6317	1481	21	0.0170	6	—	4.9473	271	32	0.0019	1	—	12.4652	1598	8	
16	17	5	JEALOUSY (ELEKTRA/EEG)	NATALIE MERCHANT	27.4552	3228	13	26.9496	3058	18	15.2035	2153	9	0.0638	11	—	9.7225	700	15	1.3370	215	26	1.1284	149	—	
17	16	11	SWEET DREAMS (RCA)	LA BOUCHE	26.8375	3083	16	27.8198	3159	15	21.4602	2547	4	3.7511	344	29	1.6206	191	39	0.0056	1	—	—	—	—	
18	14	36	MISSING (ATLANTIC)	EVERYTHING BUT THE GIRL	26.7977	2405	28	30.4608	2781	22	12.2899	1158	—	4.7346	341	—	6.2116	570	—	2.4827	301	—	0.4761	35	—	
19	21	4	STANDING OUTSIDE A BROKEN PHONE BOOTH... (ERGO/COLUMBIA)	PRIMITIVE RADIO GODS	26.7649	3128	15	25.5710	2863	21	8.4303	812	36	—	—	—	1.5492	180	40	—	—	—	16.7854	2136	2	
20	22	9	THE EARTH, THE SUN, THE RAIN (GIANT)	COLOR ME BADD	24.9252	3194	14	25.3548	3232	14	18.5315	2306	8	4.2015	473	19	1.9284	359	27	0.2638	56	—	—	—	—	
21	20	30	WONDER (ELEKTRA/EEG)	NATALIE MERCHANT	24.8264	2291	30	25.6322	2420	26	8.8250	911	—	—	—	—	13.2387	1044	6	1.5516	156	—	1.2111	180	—	
22	24	4	C'MON N' RIDE IT (THE TRAIN) (QUADRASOUND/BIG BEAT/ATLANTIC)	QUAO CITY OJ'S	23.7108	1953	38	22.9699	1857	40	7.6861	916	32	16.0247	1037	5	—	—	—	—	—	—	—	—	—	—
23	38	2	I LOVE YOU ALWAYS FOREVER (ATLANTIC)	DONNA LEWIS	23.5493	2416	27	17.7292	1771	43	12.7191	1599	19	3.0787	192	—	7.4055	555	21	0.3428	68	—	0.0032	2	—	
24	23	15	EVERYTHING FALLS APART (COLUMBIA)	DOG'S EYE VIEW	22.9060	2837	20	25.1588	3090	17	14.2244	1848	15	0.0119	4	—	6.1270	613	18	0.1322	43	—	2.4105	329	—	
25	31	2	FOREVER (COLUMBIA)	MARIAH CAREY	22.8604	2747	23	19.4338	2298	29	13.1501	1622	18	2.3907	292	32	3.4182	399	25	3.9014	434	12	—	—	—	
26	18	14	OLD MAN & ME (WHEN I GET TO HEAVEN) (ATLANTIC)	HOOTIE & THE BLOWFISH	22.2201	2819	21	26.2587	3293	12	11.3812	1568	20	0.0848	13	—	8.6862	905	11	1.1100	220	25	0.9579	113	—	
27	25	30	BE MY LOVER (RCA)	LA BOUCHE	21.0964	1670	45	22.2594	1744	45	13.6645	1196	—	5.4152	324	—	2.0145	149	—	—	—	—	0.0022	1	—	
28	27	25	SITTIN' UP IN MY ROOM (ARISTA)	BRANDY	21.0812	1872	40	22.0917	1970	38	11.6899	1076	28	8.6305	655	14	0.7573	139	—	0.0035	2	—	—	—	—	
29	28	45	NAME (METAL BLADE/WARNER BROS.)	GOO GOO DOLLS	20.7110	2069	33	21.2966	2052	34	7.1619	883	—	0.0277	3	—	10.7703	759	12	0.4473	83	—	2.3038	341	—	
30	26	6	CHILDREN (ARISTA)	ROBERT MILES	20.4777	2466	26	22.1121	2486	25	11.9855	1650	17	2.3319	208	—	5.4417	508	23	0.7020	94	—	0.0166	6	—	
31	29	16	CHAMPAGNE SUPERNOVA (EPIC)	OASIS	20.0180	2779	22	21.0239	2870	20	13.8098	2046	11	0.0800	11	—	2.6511	243	33	0.0051	2	—	3.4720	477	—	
32	30	4	PEPPER (CAPITOL)	BUTTHOLE SURFERS	19.7109	2468	24	19.6591	2378	27	2.8208	278	—	—	—	—	0.1475	16	—	—	—	—	16.7426	2174	1	
33	34	60	RUN-AROUND (A&M)	BLUES TRAVELER	19.6510	1782	43	19.2868	1791	41	5.9086	696	—	2.9110	203	—	9.8993	735	13	—	—	—	0.9321	148	—	
34	NEW		STUPID GIRL (ALMO SOUNDS/GEFFEN)	GARBAGE	18.3098	2386	29	17.1109	2201	30	3.0100	402	—	—	—	—	0.7989	35	—	—	—	—	14.5009	1949	4	
35	36	3	TONIGHT, TONIGHT (VIRGIN)	THE SMASHING PUMPKINS	18.2373	2467	25	18.2268	2334	28	3.6163	489	—	—	—	—	1.0979	118	—	—	—	—	13.5231	1860	6	
36	32	32	THE WORLD I KNOW (ATLANTIC)	COLLECTIVE SOUL	18.2220	2066	34	19.3090	2165	31	9.4536	1165	—	0.0133	5	—	6.5419	533	22	0.0655	25	—	2.1477	338	—	
37	NEW		SPIDERWEBS (TRAUMA/INTERSCOPE)	NO DOUBT	17.7958	2165	31	17.2206	2049	35	3.5249	274	—	—	—	—	0.3387	30	—	—	—	—	13.9322	1861	5	
38	35	2	I CAN'T SLEEP BABY (IF I) (JIVE)	R. KELLY	17.4784	1472	51	18.2487	1418	61	2.2416	333	—	15.2363	1137	4	0.0005	2	—	—	—	—	—	—	—	
39	39	42	ONLY WANNA BE WITH YOU (ATLANTIC)	HOOTIE & THE BLOWFISH	17.0409	1413	54	17.6958	1401	64	5.1132	534	—	0.0838	11	—	4.1402	269	—	7.4428	554	—	0.2609	45	—	
40	40	21	CLOSER TO FREE (SLASH/REPRISE)	BODEANS	16.5196	1910	39	17.4700	2009	36	7.3527	1028	29	0.0429	12	—	8.0309	715	14	0.3401	69	—	0.7530	86	—	

Records showing an increase in audience over the previous week, regardless of chart movement. Rankings by format (on right side of this page) correspond to 40-position charts printed in this week's Monitor (30 positions for adult contemporary); therefore rankings do not exist for recurrences and records below No. 40 (No. 30 for adult contemporary). Audience computed by cross-referencing exact times of airplay with Arbitron listener data. ©1996, Billboard/BPI Communications.



1996
Billboard
Monitor
Radio
Seminar & Awards...

September 5 - 7, 1996
The New York Sheraton Hotel, New York City

We're giving you more for less:

- Panels on key industry issues
- Special guest speakers
- Live artist showcases from all formats
- Great parties
- Billboard/Airplay Monitor Awards Dinner

Call our Radio Seminar & Awards hotline for registration information: 212-536-6450.
You can't afford to miss this opportunity!



Special Radio Pre-Registration Rate
\$199
Only

(Rate good until Aug. 15)



R&R AC Top 10
⑱ - ⑭ Monitor
Adult Contemporary Chart
Pop New & Active
See July 5th USA Today

michael
english



Your Love AMAZES Me

Produced by Guy Roche • Mixed by David Thoener

The debut single from his new album, "Freedom"



CURB
RECORDS

THIS WEEK	LAST WEEK	WKS. ON CHART	MAINSTREAM		DETECTIONS		
			TITLE/LABEL/DISTRIBUTING LABEL	ARTIST	TW	LW	
			★★★★ NO. 1 ★★★★★				
1	1	9	YOU LEARN MAVERICK/REPRISE 2 weeks at No. 1	ALANIS MORISSETTE	4018	4063	
2	2	12	KILLING ME SOFTLY RUFFHOUSE/COLUMBIA	FUGEES	3455	3731	
3	3	17	GIVE ME ONE REASON ELEKTRA/VEEG	TRACY CHAPMAN	3321	3630	
4	5	14	SWEET DREAMS RCA	LA BOUCHE	2547	2608	
5	10	8	WHO WILL SAVE YOUR SOUL ATLANTIC	JEWEL	2429	2193	
6	8	11	MACARENA (BAYSIDE BOYS MIX) RCA	LOS DEL RIO	2387	2325	
7	4	20	BECAUSE YOU LOVED ME 550 MUSIC	CELINE DION	2363	2813	
8	7	14	THE EARTH, THE SUN, THE RAIN GIANT	COLOR ME BADD	2306	2362	
9	12	8	JEALOUSY ELEKTRA/VEEG	NATALIE MERCHANT	2153	2024	
10	14	18	INSENSITIVE A&M	JANN ARDEN	2145	2008	
11	11	10	CHAMPAGNE SUPERNOVA EPIC	OASIS	2046	2148	
12	9	23	IRONIC MAVERICK/REPRISE	ALANIS MORISSETTE	2023	2298	
13	16	5	CHANGE THE WORLD REPRISE	ERIC CLAPTON	2006	1830	
14	6	21	ALWAYS BE MY BABY COLUMBIA	MARIAH CAREY	1986	2373	
15	13	19	EVERYTHING FALLS APART COLUMBIA	DOG'S EYE VIEW	1848	2020	
16	15	29	NOBODY KNOWS LAFACE/ARISTA	THE TONY RICH PROJECT	1732	1837	
17	18	9	CHILDREN ARISTA	ROBERT MILES	1650	1660	
18	20	4	★★★★ AIRPOWER ★★★★★		FOREVER COLUMBIA	MARIAH CAREY 1622 1347	
19	25	3	★★★★ AIRPOWER ★★★★★		I LOVE YOU ALWAYS FOREVER ATLANTIC	DONNA LEWIS 1599 1170	
20	17	14	OLD MAN & ME (WHEN I GET TO HEAVEN) ATLANTIC	HOOTIE & THE BLOWFISH	1568	1824	
21	30	3	COUNTING BLUE CARS A&M	DISHWALLA	1481	1062	
22	22	6	YOU'RE MAKIN' ME HIGH LAFACE/ARISTA	TONI BRAXTON	1433	1312	
23	21	6	THA CROSSROADS RUTHLESS/RELATIVITY	BONE THUGS-N-HARMONY	1381	1345	
24	19	23	FOLLOW YOU DOWN A&M	GIN BLOSSOMS	1326	1439	
25	29	3	THAT GIRL VIRGIN	MAXI PRIEST FEATURING SHAGGY	1283	1071	
26	27	9	YOUR LOVING ARMS SIRE/VEEG	BILLIE RAY MARTIN	1125	1164	
27	23	25	1979 VIRGIN	THE SMASHING PUMPKINS	1096	1263	
28	26	23	SITTIN' UP IN MY ROOM ARISTA	BRANDY	1076	1167	
29	28	25	CLOSER TO FREE SLASH/REPRISE	BODEANS	1028	1116	
30	24	11	FLOOD ESSENTIAL/SILVERTONE/JIVE	JARS OF CLAY	1009	1210	
31	33	12	1, 2, 3, 4 (SUMPIN' NEW) TOMMY BOY	COOLIO	957	972	
32	36	2	C'MON N' RIDE IT (THE TRAIN) QUADRASOUND/BIG BEAT/ATLANTIC	QUAD CITY DJ'S	916	782	
33	32	6	BACK TO THE WORLD QWEST/WARNER BROS.	TEVIN CAMPBELL	906	984	
34	35	4	ALL ALONG EMI	BLESSID UNION OF SOULS	884	849	
35	34	12	FASTLOVE DREAMWORKS/GEFFEN	GEORGE MICHAEL	858	952	
36	NEW		STANDING OUTSIDE A BROKEN PHONE BOOTH... COLUMBIA	PRIMITIVE RADIO GODS	812	603	
37	40	2	WHERE DO YOU GO ARISTA	NO MERCY	756	675	
38	39	2	WAITING FOR WEDNESDAY GEFFEN	LISA LOEB & NINE STORIES	752	704	
39	NEW		TUCKER'S TOWN ATLANTIC	HOOTIE & THE BLOWFISH	739	552	
40	31	10	THEME FROM MISSION: IMPOSSIBLE MOTHER/ISLAND	ADAM CLAYTON & LARRY MULLEN	666	1013	

THIS WEEK	LAST WEEK	WKS. ON CHART	RHYTHM-CROSSOVER		DETECTIONS		
			TITLE/LABEL/DISTRIBUTING LABEL	ARTIST	TW	LW	
			★★★★ NO. 1 ★★★★★				
1	1	15	THA CROSSROADS RUTHLESS/RELATIVITY 4 weeks at No. 1	BONE THUGS-N-HARMONY	1479	1551	
2	9	9	YOU'RE MAKIN' ME HIGH LAFACE/ARISTA	TONI BRAXTON	1337	1297	
3	4	7	TWISTED ELEKTRA/VEEG	KEITH SWEAT	1272	1199	
4	5	7	I CAN'T SLEEP BABY (IF I) JIVE	R. KELLY	1137	1159	
5	6	14	C'MON N' RIDE IT (THE TRAIN) QUADRASOUND/BIG BEAT/ATLANTIC	QUAD CITY DJ'S	1037	1074	
6	3	20	KILLING ME SOFTLY RUFFHOUSE/COLUMBIA	FUGEES	1003	1240	
7	14	4	MY BOO SO SO DEF/COLUMBIA	GHOST TOWN DJ'S	944	667	
8	7	17	YOU'RE THE ONE RCA	SWV	897	967	
9	9	11	KISSIN' YOU BAD BOY/ARISTA	TOTAL	849	796	
10	8	25	ALWAYS BE MY BABY COLUMBIA	MARIAH CAREY	808	929	
11	10	10	TOUCH ME TEASE ME SPOILED ROTTEN/DEF JAM/MERCURY	CASE FEAT. FOXXY BROWN	736	742	
12	16	23	MACARENA (BAYSIDE BOYS MIX) RCA	LOS DEL RIO	686	622	
13	12	12	WHY I LOVE YOU SO MUCH ROWDY/ARISTA	MONICA	660	696	
14	13	32	SITTIN' UP IN MY ROOM ARISTA	BRANDY	655	688	
15	11	17	BECAUSE YOU LOVED ME 550 MUSIC	CELINE DION	624	713	
16	15	10	GET ON UP MCA	JODECI	592	623	
17	18	4	THAT GIRL VIRGIN	MAXI PRIEST FEATURING SHAGGY	566	603	
18	17	11	FASTLOVE DREAMWORKS/GEFFEN	GEORGE MICHAEL	498	610	
19	22	15	THE EARTH, THE SUN, THE RAIN GIANT	COLOR ME BADD	473	478	
20	19	13	IRONIC MAVERICK/REPRISE	ALANIS MORISSETTE	448	596	
21	31	2	BABY LUV EPIC	GROOVE THEORY	422	339	
22	27	5	IF I RULED THE WORLD COLUMBIA	NAS	400	384	
23	25	18	RELEASE ME UPSTAIRS	ANGELINA	400	403	
24	21	19	1, 2, 3, 4 (SUMPIN' NEW) TOMMY BOY	COOLIO	378	486	
25	23	7	IT'S ALL THE WAY LIVE (NOW) TOMMY BOY/ISLAND	COOLIO	371	415	
26	24	13	TRES DELINQUENTES PMP/LOUD/RCA	DELINQUENT HABITS	363	404	
27	26	4	HOW DO U WANT IT DEATH ROW/INTERSCOPE	2PAC (FEATURING KC AND JOJO)	352	386	
28	37	3	LOUNGIN DEF JAM/MERCURY	LL COOL J	349	316	
29	28	17	SWEET DREAMS RCA	LA BOUCHE	344	382	
30	30	11	KEEP ON, KEEPIN' ON FLAVOR UNIT/EASTWEST/VEEG	MC LYTE FEATURING XSCAPE	329	357	
31	35	4	I LIKE DEF JAM/MERCURY	MONTELL JORDAN FEATURING SLICK RICK	318	323	
32	33	2	FOREVER COLUMBIA	MARIAH CAREY	292	329	
33	38	24	DOWN LOW (NOBODY HAS TO KNOW) JIVE	R. KELLY FEAT. RONALD ISLEY	271	307	
34	34	22	ALL THE THINGS (YOUR MAN WON'T DO) ISLAND	JOE	270	328	
35	29	7	BACK TO THE WORLD QWEST/WARNER BROS.	TEVIN CAMPBELL	268	382	
36	NEW		ONLY YOU BAD BOY/ARISTA	112 FEATURING THE NOTORIOUS B.I.G.	266	266	
37	NEW		HIT ME OFF MCA	NEW EDITION	261	49	
38	NEW		LIKE A WOMAN LAFACE/ARISTA	THE TONY RICH PROJECT	260	171	
39	NEW		WHERE DO YOU GO ARISTA	NO MERCY	235	222	
40	NEW		YOU LEARN MAVERICK/REPRISE	ALANIS MORISSETTE	231	218	

Records showing an increase in detections over the previous week, regardless of chart movement. A record which has been on either chart for more than 20 weeks will not receive a bullet, even if it registers an increase in detections. Airpower awarded to those records which attain 1500 detections (mainstream) or 600 detections (rhythm) for the first time. If two records are tied in number of plays, the record being played on more stations is placed first. Records below the top 20 are removed from the chart after 26 weeks.



© 1996 John Mellencamp
<http://www.mercuryrecords.com/mercury>