

ROCK ■ AIRPLAY Monitor

• We Listen To Radio •

February 7, 1997 \$4.95 Volume 4 • No. 6

ROCK HIGHLIGHTS

MAINSTREAM

#1

THE WALLFLOWERS

One Headlight (INTERSCOPE)

★★★ AIRPOWER ★★★

COLLECTIVE SOUL • Precious Declaration (ATLANTIC)

NEW RELEASES

JAMES • She's A Star (FONTANA/MERCURY)

JOHN MELLENCAMP • Emotional Love (MERCURY)

NERF HERDER • Sorry (ARISTA)

ORANGE 9MM • Fire In The Hole (ATLANTIC)

ORBIT • Medicine (A&M)

PHISH • Character Zero (ELEKTRA/EEG)

PORNO FOR PYROS • Hard Charger (WARNER BROS.)

SOUL COUGHING • Super Bon Bon (SLASH/WARNER BROS.)

VERUCA SALT • Volcano Girls (MINTY FRESH/OUTPOST/GEFFEN)

MODERN

#1

U2

Discotheque (ISLAND)

★★★ AIRPOWER ★★★

NO RECORDS QUALIFIED FOR AIRPOWER THIS WEEK

NEW RELEASES

THE MIGHTY MIGHTY BOSSTONES • The Impression That I Get (MERCURY)

ORBIT • Medicine (A&M)

PLEXI • Roller Rock Cam (SUB POP/ELEKTRA/EEG)

PORNO FOR PYROS • Hard Charger (WARNER BROS.)

RUTH RUTH • Daddy Can't Shoot (EPITAPH)

TRIPLE A

#1

THE WALLFLOWERS

One Headlight (INTERSCOPE)

★★★ AIRPOWER ★★★

WIDESPREAD PANIC • Hope In A Hopeless World (CAPRICORN/MERCURY)

R.E.M. • Electrolite (WARNER BROS.)

U2 • Discotheque (ISLAND)

To Live And Die In L.A.: KSCA's PD And MD Say Triple-A Was Never Equipped To Win

by Marc Schiffman

The long-anticipated sale of Golden West's triple-A KSCA (101.9 FM) Los Angeles should close by the time you read this, with new owner Heliel flipping it to a Spanish-language format.

This, less than a year after WNEW New York's short-lived experiment with triple-A, leaving the top two markets without commercial triple-A outlets. What happened to the station that many in the industry hoped would be a triple-A flagship? In this exclusive look back at KSCA, PD Mike Morrison and MD Nicole Sandler contend that KSCA never had the commitment of financial resources that would have made triple-A a player in L.A.

KSCA's predecessor, soft AC KLIT, the last station in the Gene Autry family's Golden West chain, was initially due to be automated. Morrison says, "They felt like they could sell it for more money in a couple of years... The mandate was, we'll keep it, but let's not lose any more money running it."

Then somebody in the Autrys' other business, the California Angels organization, heard triple-A KZON Phoenix during spring training and called KLIT GM Bill Ward, inviting him to Phoenix to hear the station. It was love at first listen, and Ward hadn't left the Phoenix airport before phoning

consultant Dennis Constantine for more information on triple-A.

"It was clear from the start this station was always for sale," says Morrison, "[but] they wanted an exorbitant amount of money for it. The irony is that the number that was bandied about when we first came on, \$60 million, was a joke." The station-sale boom created by last year's Telecom legislation allowed the Autrys to sell for over \$100 million.

Continued on page 5



AEROSMITH

NINE LIVES

"FALLING IN LOVE,"
(IS HARD ON THE KNEES)

THE FIRST SINGLE
ARRIVING VIA SATELLITE FEBRUARY 12TH

FROM THE FORTHCOMING ALBUM *Nine Lives*

IN STORES
TUESDAY
MARCH 18TH

CAN YOU STILL TAKE A HIT ?

MANAGEMENT: M&G entertainment Inc. PRODUCED BY KEVIN SHIRLEY ADDITIONAL PRODUCTION BY
"COLUMBIA" REG.-U.S. PAT. & TM. OFF. MARCA REGISTRADA. © 1997 SYNGALI MERCHANDISING, INC. COLUMBIA

"the freshmen"



modern rock chart debut (34) with over 750 spins!
rock - approaching 400 spins
AAA - approaching 200 spins
big picture chart debut (30)

top 10 request @ Q101!
already #1 testing record @ WEND!

the new single by the verve pipe

already on these modern rock stations:

KROQ KDGE KPNT Q101 KNDD
CIMX 99X WHFS WHYT KXPK
KOME 91X KEGE +many more

and these active rock stations:

WRIF KDKB WDVE WBZX
WZTA WIYY KLBJ WJRR
KRXQ WLVQ +many more

and these AAA stations:

WRLT WLUP
WXLE KAEP
KGSR WMMM
WXRV +many more



Produced by Jerry Harrison
Mixed by Tom Lord-Alge
New version produced and mixed by Jack Joseph-Pug
Management: Doug Buttman Management/The Fitzgerald Hartley Company

The RCA Records Label is a unit of BMG Entertainment • TM(s) • Registered Marca(s) Registrada(s) • General Electric Co., USA • BMG logo is a trademark of BMG Music • 1997 BMG Entertainment

Web Site: <http://thevervepipe.com>

E-mail: info@thevervepipe.com

1 year later and the commitment continues...

RADIOACTIVE

There Is A Mountain, Then No Mountain

Triple-A KUMT (the Mountain) Salt Lake City has shifted to soft rock, revolving around a '70s library, with lots of **Beatles, Creedence, and Fleetwood Mac**, along with some currents from the likes of **Journey, Counting Crows, the Wallflowers, Duncan Sheik, Jewel, and Don Henley**. The station is only running one current an hour outside of mornings. PD **Zeb Norris** remains in place as do calls and station name.

Rhythmic top 40 **CKEY** (the Planet) Buffalo, N.Y., has become a split-personality station, returning to its modern rock roots during the day with the likes of **Stone Temple Pilots, the Wallflowers, and 311**. After 7 p.m., it retains its rhythmic top 40 lean but will start filtering in current alternative dance product shortly. **Chuck Camroux**, best known as the longtime GM of **CKLW** Detroit in its top 40 days, is consulting.

WVNC Cincinnati GM **Tom Sly**, who was announced last week as co-manager of Jacor's Salt Lake City properties, is officially named GM of top 40 **KZHT** (Hot 94.9), classic rock **KURR**, oldies **KODJ**, and N/T **KALL**. **Bill Hurley** stays GM of Jacor's Salt Lake City country outlets.

No official word from the station, but outside sources say that by the time you read this, former album **WBAB** Long Island, N.Y., PD **Jeff Levine** will resurface on modern AC **WLIR** (the Island), Feb. 19, as PD.

Bruce Blevins, most recently with Nationwide's San Diego outlets, will be the new GM of classic hits **KHTC** Phoenix when Nationwide closes on that property.

Modern **KNNC** Austin, Texas, LMA'd by Crosstown modern **KROX**, is simulcasting **KROX**.

Classic hits **KFTE** (Cool 97) Lafayette, La., switched to a very modern-leaning active rock format as Planet Radio. APD/morning man **Fast Eddie** rises to PD, replacing **C.J.**, who is now PD/mornings at sister AC **KTDY**. **Rob Summrs** is upped from nights to APD/MD/morning co-host. Middayer **Curt Hebert** exits. Crosstown country **KMDL** night jock **Peter Gunn** joins for afternoons. **Dave Steel** returns to the station for nights.

Heroes In New York



Metallica drummer Lars Ulrich, right, gets the 50 cent tour of the new studios at modern **WXRK** (K-Rock) New York with PD **Steve Kingston** as his guide.

Westinghouse Electric Corp. has elected CBS Radio chairman/CEO **Mel Karmazin** to its board of directors.

Capstar Broadcasting Partners announced a \$60 million deal to buy 20 stations in mid-sized markets in Wisconsin, Arizona, Virginia, and Alaska from four radio groups: Madison Radio Group, Commonwealth Broadcasting, Cavalier Communications, and COMCO Broadcasting. Included in the deal are Madison, Wis., stations album **WIBA** and modern **WMAD** and classic rock **KYJT** Yuma, Ariz.

Feb. 10 is the date for triple-A **KTHX** Reno, Nev., to move frequencies from 94.7 to 100.1, formerly held by **KZAK** with satellite classic rock programming. Susquehanna will take 94.7 by way of neighboring **KBYA**, which beams its signal into Sacramento, Calif.

Country **KNSX** Steelville, Mo., flips to modern. PD **Jim Atkinson**, a former MD at top 40 **WKBB** St. Louis, says **KNSX** is undergoing a power upgrade to enable it to cover St. Louis.

Classic rock **WYBB** Charleston, S.C., PD **T.K. O'Grady** turns controls of adult top 40 sister **WNST** (Star 105) over to **Ryan Walker** from top 40 rival **WSSX** (95.5X).

Larry LeBlanc, former PD of modern **KTGE** Baton Rouge, La., resurfaces as PD of **KVOL-FM** Lafayette, La., as that station flips from R&B to AC as Star 105.

Modern **KNDD** Seattle swing jock **Ron Harris** takes PD/middays at album **KATS** Yakima, Wash.

Top 40 **WHTZ** (Z100) New York replaces its "Lovephones" sex-talk show with the "Z100 Chat Room," a request-driven show from 10 p.m.-midnight, hosted by night jock **Lukas** and computer-generated jock "Cyber Boy." Modern rival **WXRK** picks up "Lovelines" from sister **KROQ** Los Angeles for Sundays at 10 p.m. That moves K-Rock's new music show to midnight.

Classic rock **KGB** San Diego morning man **Brian Whitman** exits for N/T **WABC** New York. Morning co-host **Jack Silver** remains at large. Meanwhile, album **KEGL** Dallas production director **Mike Madrigal** joins **KGB** as production director.

Modern AC **KLLC** (Alice 97.3) San Francisco snags **Sarah Clark** and **Vinnie Hasson** for mornings from modern (but not for long) **WDRE** Philadelphia. The duo replaces **Steven Seaweed**, who moves to overnights.

At classic hits **WSRR** (Star 98) Memphis, morning host **Melody Meadows** exits, replaced by **Kelly Cruise** from hot AC rival **WMC-FM** (FM100).

Top 40 **WAKX** (Mix 96) Grand Rapids, Mich., drops the syndicated **Bob and Tom** morning show, as it reverts to hot AC. But the pair adds an affiliate in album **WJXQ** (Q106) Lansing, Mich.

James Ferry, production director for Nashville duo modern **WRLG**/triple-A **WRLT**, joins modern **WNNX** (99X) Atlanta as creative director, as **Keith Eubanks** relinquishes the bulk of production at 99X, though he'll still do voice work there.

Triple-A **WVOD** Manteo, N.C., APD/MD/night jock **Matt Cooper** takes afternoons after the departure of **Doug Dino**, now in afternoons at Crosstown modern **WOBX**.

Jeff Strahl is upped to GSM from sales manager at classic rock **KRKQ** Des Moines, Iowa... In Sioux City, Iowa, album **KSEZ** adds new morning man **Greg McCullough** to the "Z98 Morning Jam." He's replaced in mornings at classic rock **WRZZ** Parkersburg, W.Va., by the syndicated **John Boy and Billy**. Album **WIOT** Toledo, Ohio, AE **Don Jardine** becomes sales manager.

With classic rock **KZPS** Dallas overnighther **Kacy Harrison** now across the street in after-

Sabean Oversees WYST Flip To 97 Rock; Stern Back To Detroit In Mornings

CBS-owned classic hits outlet **WYST** (Star 97) Detroit drops its '70s-based format to become album outlet 97 Rock. **WYST** signs **Howard Stern's** syndicated show in mornings, moving **Don Imus** to N/T **WXYT-AM**. **Stern** previously did mornings in Detroit in 1980-81, during **WWWW's** last days as an album outlet.

Tim Sabean, PD of co-owned album outlet **WYSP** Philadelphia, will be splitting his time between **WYST** and **WYSP**, as Detroit hires a PD and air staff.

Also at **WYSP**, APD/MD **Mark Thompson** has resigned. **Neal Mirsky** trades his role of executive producer of **John De Bella's** afternoon show for **Thompson's** APD/MD

stripes. **Karen Buck**, formerly **De Bella's** producer, is now **WYSP** marketing director, replacing the recently exited **Don Bernstine**. **Sabean** now oversees the **De Bella** show.

Here's a sample hour on **WYST**: **Guns N' Roses**, "You Could Be Mine"; **Led Zeppelin**, "D'yer Mak'er"; **Metallica**, "Hero Of The Day"; **Smashing Pumpkins**, "Tonight, Tonight"; **Eric Johnson**, "Cliffs Of Dover"; **Aerosmith**, "Dream On"; **Expanding Man**, "Download"; **Stone Temple Pilots**, "Lady Picture Show"; **Nirvana**, "All Apologies"; **Pink Floyd**, "Time"; **Tonic**, "Open Up Your Eyes"; and **Pearl Jam/Neil Young**, "Rockin' In The Free World." **MARC SCHIFFMAN**

WFBQ Unclothed



Album **WFBQ** Indianapolis-based syndicated morning men **Bob and Tom** reveal their new stripped-down billboard campaign.

PERSONNEL FILE BY ANTHONY COLOMBO

EBT Promotion Formed; Isquith Exits

Epitaph Records, the Left Bank Organization, and Tommy Boy Records have formed **EBT Promotion**, which will handle promotion for the three companies. Also, **Left Bank** plans to launch its own label, **Beyond Music**. **Left Bank** president **Bruce Tennenbaum** will oversee day-to-day operations of **EBT**; former **MCA** VP of rock promotion **Gina Iorillo** is aboard as the first member of the **EBT** promotion team.

A&M VP of alternative promotion **Jack Isquith** announced last week that he would exit the label.

Red Ant names **Michelle St. Clair** national director of alternative promotion. **St. Clair** was recently **Priority's** head of alternative promotion.

RCA taps **Cliff O'Sullivan** as VP of marketing and **Julie Bruzzone** as senior director of marketing. **O'Sullivan** was recently VP of artist development for **EMI Music Distribution**; **Bruzzone** had been director of product management at **Virgin**.

Geffen names **Rochelle Fox** marketing director. **Fox**, a six-year label veteran, was **West Coast** alternative promotion director.

Guardian VP of marketing and promotion **Chris Hensley** becomes senior VP of marketing and promotion at **N2K Encoded Music**.

Sub Pop has reorganized its commercial radio promotion department, eliminating two of three positions. Exiting are **Susie Tennant**, national director of promotion, and **Cheryl Kovalchik**, **West Coast** director of promotion. Remaining is **Monica Nylod**, who will assume national duties.

VelVel adds **Laura Bender** as Midwest director of promotion. **Bender**, who will be based in **Chicago**, had been with **RCA**.

noons at triple-A **KKZN** (the Zone), **KZPS** moves P/T **Perri Reavis** to overnights and adds **Keith Vaughn** in P/T. **Vaughn** also works on **ABC/SMN's** classic rock satellite feed.

SWE Cable Radio director of programming **Andrea Karr** joins **Alternative Radio Confidential** to write a column on **Selector**.

P/T **Max Jackson** is promoted to overnights at **WGBF** Evansville, Ind.

Modern **KTOZ** Springfield, Mo., morning air personality **Shelly Scott** becomes MD...

Modern **WRLG** Nashville associate MD **Jason Moon** rises from interim MD to MD.

With album **WKQZ** Saginaw, Mich., MD/night jock **Paul Oslund** out, **Lauren Davis** joins for nights from the same shift at hot AC **WUPS** Traverse City, Mich.

At modern **KJEE** Santa Barbara, Calif., overnighther/morning sidekick **Michelle Waters** takes middays, replacing **Karen Mason**.

Modern **WDGE** Providence, R.I., nights/production director **Mad Max** exits.

M Street Format Monitor**Country Slide Continues; Modern Rebounds**


The country format lost outlets for the fifth straight month, with a net loss of 7 stations in January, according to the M Street Format Monitor. While top 40's resurgence ground to a halt, modern rock had its best month of station growth in some time, due to a rash of small-market start-ups.

News/talk, after a relatively fallow period, got its best bounce in a while, but the format receiving the best news was sports/talk, which picked

up 20 stations over the past two months, muscling ahead of mainstream R&B, which had a net loss of three outlets in January. But adult R&B and R&B oldies were up, with R&B oldies having its best showing to date (46 stations).

M Street is a Nashville-based provider of radio station data to the broadcast and music industries. The M Street Format Monitor appears in the first issue of Monitor each month.

SEAN ROSS

RANK		The M Street  FORMAT MONITOR	STATION COUNT		
THIS MONTH	LAST MONTH		JAN. '97	DEC. '96	NET GAIN OR LOSS
1	1	Country	2,511	2,518	-7
2	2	News/Talk	1,119	1,112	7
3	3	Adult Contemporary	932	935	-3
4	4	Oldies	734	735	-1
5	5	Religion (Music)	604	606	-2
6	6	Adult Standards	509	505	4
7	7	Spanish	468	467	1
8	8	Religion (Talk)	423	426	-3
9	9	Soft AC/Easy Listening	392	390	2
10	10	Classic Rock/Hits	358	357	1
11	11	Top-40/Mainstream/Rhythm	332	336	-4
12	12	Top-40/Adult	284	279	5
13	13	Mainstream Rock	263	265	-2
14	15	Sports	181	171	10
15	14	R&B	178	181	-3
16	16	R&B Adult/Oldies	166	164	2
17	17	Miscellaneous	158	157	1
18	18	Modern Rock	156	149	7
19	19	Triple-A	120	120	0
20	20	Jazz	93	94	-1
21	21	Classical	40	41	-1
Total commercial operating stations			10,021	10,008	
Stations off the air			257	274	

○ Formats showing an increase in station count over the previous chart, regardless of chart movement.

Rock Me, Elmo

Charm Farm touched down at modern WHYT (the Planet) Detroit so band member Steve Zuccaro could show off the Tickle Me, Elmo doll he got for Christmas. Pictured, from left, are Charm Farm's Dino Zoyes; morning person Hadji; Charm Farm's Black Roberts, Zuccaro, and Dennis White; and morning people Johnny and Zito.

EDITOR: SEAN ROSS
 MANAGING EDITOR: MARC SCHIFFMAN
 MAINSTREAM ROCK/TRIPLE A CHART MANAGER: ANTHONY COLOMBO
 MODERN ROCK CHART MANAGER: MARK MARONE
 WRITER/REPORTER: DANA HALL
 CONTRIBUTORS: KEN BARNES, HESTON HOSTEN
 CHART PRODUCTION MANAGER: MICHAEL CUSSON
 ASST. CHART PRODUCTION MANAGER: ALEX VITOULIS
 EDITORIAL PRODUCTION MANAGER: BARRY BISHIN
 ASSOC. EDITORIAL PRODUCTION MANAGER: MARCIA REPINSKI
 EDITORIAL PRODUCTION: MADELINE CARROLL, SUSAN CHICOLA,
 MARC GIAQUINTO, SARAH JOHNSON, MARIA MANLICIC
 COPY EDITOR: CARL ROSEN
 ADVERTISING PRODUCTION MANAGER: LYDIA MIKULKO
 ADVERTISING PRODUCTION ASST.: CINDIE WEISS
 ADVERTISING ART DIRECTOR: RAY CARLSON

NATIONAL ADVERTISING MANAGER: JON GUYNN
 ADVERTISING SALES: JACK FULMER, GARY NUEL
 CLASSIFIED ADVERTISING: LAURA RIVCHUN
 SALES ASSISTANTS: EVELYN ASZODI, ERICA BENGTSON,
 FRED DAHLQVIST, ALYSE ZIGMAN

EDITORIAL ADVISER: TIMOTHY WHITE
 PRODUCTION DIRECTOR: MARIE GOMBERT
 DIRECTOR OF MARKETING: ELISSA TOMASETTI
 CIRCULATION MANAGER: JEANNE JAMIN



PRESIDENT: HOWARD LANDER
 SENIOR VP/GENERAL COUNSEL: GEORGINA CHALLIS
 VICE PRESIDENT: ADAM WHITE
 DIRECTOR OF STRATEGIC DEVELOPMENT: KEN SCHLAGER
 BUSINESS MANAGER: JOELLEN SOMMER

© 1997 BPI Communications
 1515 Broadway, New York, NY 10036 212-764-7300
 For subscriptions call: 800-722-2346

**CHEET SHEET** BY MARK MARONE**Ground Control To Space's Tom**

Space has created quite a stir in its homeland. Not quite the kind in which delirious youth all over the U.K. throw themselves at the band, though that could happen. Rather, Space has managed to at once intrigue and confound the traditionally critical music press—no small feat in the U.K.—with its offbeat, vaudevillian brand of rock music. It has also captured the imagination of consumers: last year alone, Space made four "Top Of The Pops" appearances and charted three top 15 singles, as its "Spiders" album spun a platinum sales story.

Space could have written the soundtrack for a modern-day version of the musical "Oliver." While songs such as "Money," "Neighbourhood," and the band's first U.S. single, "Female Of The Species," combine cartoonish cinematic narratives with hip-hop beats, and a mix of guitars and technology, it is their Tin Pan Alley melodies that make them sound like colorful street minstrels.



Back to front, Franny Griffiths, Andy Parle, Jamie Murphy, Tommy Scott

Space hails from the dingy seaside port of working-class Liverpool but says its charming romps owe more to Hanna-Barbera than Lennon-McCartney. In fact, most of the album's fantasy comic book horror motif (including the creepy eight-legged arachnids that appear in a bathtub on the cover of the debut set) stems from main songwriter/bass player Tommy Scott's insatiable appetite for cartoons, films, and pop culture. One minute, he's singing like a lavish Marlene Dietrich strutting through a dance hall (on "Money"), the next, he's playfully sprinkling assorted references to media icons or "Looney Tunes" characters in twisted cockney accents. "Sometimes I get my voice to sound like Peter Lorre," says Scott, who is currently searching for videotapes of the "Planet Of The Apes" TV series. "I'm just a real rubbish impressionist. I can't do an impression to save my life. It never comes out the way I want it."

It was three years ago that in solidifying Space's current lineup, the band's members stumbled on the piece of the puzzle that pushed the group up and out of the ranks of traditional rock bands. At the time, Scott, Andy Parle, and guitarist Jamie Murphy were a three-piece band seeking the right element to enliven their sound when they happened on an old schoolmate, keyboardist Franny Griffiths, who had just returned from Spain intoxicated with the sounds of European techno and hardcore. It was his electronic slant on their tunes that helped shape Space's sound. Songwriters Scott and Murphy, who write separately and in distinctly different styles, concede that their compositions aren't complete until filtered through the technician's lab of freaky sounds.

Perhaps one of the most alluring aspects of Scott's songwriting, which includes "Female," is the impossibly nonmodern rock influence of theatrical music from an era gone by. Scott explains that while most of his friends were listening to things like Sweet when growing up, his childhood was guided by singers with markedly less make-up and shorter hair. "[My dad] used to come to come home drunk and put Sinatra on the stereo and turn it on full blast. I had no choice. It just went straight into my brain, and it stayed there forever," Scott, who says Ella Fitzgerald and Elvis were also favorites around the house, explains that "Female" was written for his late father, who would jibe his son about writing something that he would like.

Though they've reaped considerable success at home, the members of Space are humble about coming to the U.S. for the first time, in a monthlong club tour beginning at New York's Mercury Lounge Feb. 11. "We're not coming here to think, 'Hey, we're going to knock America out by storm or things like that.' It's not like that," says Parle, whose recent press visit included the requisite pilgrimage to the hallowed CBGB. Scott more frankly admits the prospect of winning over such a massive and diverse culture is all very scary to him. "We went to Asia right before Christmas, and before that, I'd never been out of Liverpool. So it's a big culture shock all of a sudden," he says.

For now, however, the members of Space are just keeping things in perspective. "I don't know that we'll ever be like a big band in America, but I think we'll get a lot of people who appreciate that we're at least trying to do something different from most British bands," says Scott. "We say, 'Everything is a bonus.'"

Releases And Notes

Look for the always intriguing Trent Reznor to release his latest project, the "Lost Highway" soundtrack, Feb. 18. Working with director David Lynch, Reznor created mood settings and thematic pieces for the movie's soundtrack. "Imagine someone grabbing a piece of paper and drawing a box with a wave of flurry lines extending out from the top that looked something like snakes and saying, 'That is the sound I want, but on a highway,'" said Reznor about meeting the director. Tracks include Marilyn Manson, "Apple Of Sodom"; Smashing Pumpkins, "Eye"; Lou Reed re-making "This Magic Moment"; and David Bowie's "I'm Deranged." Look for a remix album to come out later in the year, featuring the Orb, Goldie, and Jack Dangers of (Meat Beat Manifesto).

Before releasing "Load" in June '96, it took Metallica close to eight years to release two sets ("And Justice..." in '88, "Metallica" in '91). Now, it is likely that a follow-up to last year's release (possibly named "Reload") may come out later this year. Word is that "the Boys in Black" recorded a surplus of solid songs during the "Load" sessions and plan to ready them for release after the current leg of their world tour, which may run until early summer in the U.S. For now, Metalheads will want to hear Apocalyptica, a string quartet from Finland who have released a record of Metallica covers using only cello. The album is set for domestic release April 8. Don't be fooled, though, these guys are metal fans in their 20s who attend Finland's most prestigious music academy and attack the songs with the vigor of the original tunes, doing justice to some of the heaviest ones, including "Master Of Puppets," "Creeping Death," and "Enter Sandman"... Mission Of Burma's track "That's When I Reach For My Revolver," now covered by Moby, was a staple of Soul Asylum's club shows for years. Soul Asylum would often stretch out with covers and medleys of its favorite songs.

To Live And Die In L.A.: KSCA's PD And MD Say Triple-A Was Never Equipped To Win

Continued from page 1

LACK OF WATER

Morrison, previously PD of noncommercial triple-A WXPB Philadelphia, knew the situation at KSCA. But now he admits to being naive about what could be done under the circumstances. He recalls Ward's ratings goal for the station. "He wanted us to get a 2 share 25-54," says Morrison. "I thought that would be a cakewalk, because WXPB had considerably better ratings than that."

"It wasn't so easy . . . We were never able to solidly get into the 2s, which was a disappointment for me. I would have liked to have done that, because . . . we could have made a lot more money and probably withstood a sale with the format."

But you have to spend money to make money, and Morrison and Sandler say that the station was never properly armed. Since its debut in 1994, Morrison says, no music research was done. "We did no focus groups. We did no perceptual studies," he says. "When we were playing music,



John Mellencamp onstage at KSCA's Christmas/Toys For Tots Concert

we had no real idea what effect the songs were having and what people liked and didn't like. It was all based on gut."

"We were missing half of the tools," says Sandler. "We were flying blind . . . There's music that I loved and fought for, but had no way of checking [audience acceptance] other than the phones."

Morrison says, "Our entire marketing was two vans driving around, passing out keychains at concerts . . . You cannot exist on that in L.A. First of all, L.A. is huge. And people are spending millions of dollars on advertising campaigns for their stations. And especially if you're targeting adults, to expect them just to find you is too much. Even if word-of-mouth is good, which it is. You can't get it up to where it needs to be with word-of-mouth alone."

Morrison notes that he and Sandler had to pull air shifts. Speaking only for himself, he says, "I feel my strength is off the air. I wouldn't hire me to be on-air in drive time in a major market . . . Not only does it take up time that I could be using to do more important things, but we don't have the best talent on-air that we could have."

But, Morrison adds, "given the fact that we kept costs down, the fact that we weren't spending a lot of money on marketing and other things, we were able to be a profitable station with a 1 share."

PROUD MOMENTS

Morrison also notes that the deal for a recent John Mellencamp/Brian Setzer Christmas show and Toys for Tots drive had just come to fruition when news of the sale hit. His first thought was, "OK, we just put 2 1/2 months work in for something that's going to come completely unraveled as soon as word [of the sale] gets out. But it didn't."

Location won the station a high-profile audience. Morrison tells of actress Jamie Lee Curtis being interviewed on the morning show of a New York station. Fiona Apple's album had just come out, and Curtis was offered a request during the interview. "She said, 'How about Fiona Apple?'"

And they didn't know who she was," he says. "She said, 'Are you kidding? It's the hottest thing. 101.9 in L.A. plays it all the time,' on the air in New York, which was gratifying. We've heard reports that people like Springsteen and Melissa [Etheridge] and Petty are regular listeners."

Being in an entertainment capitol meant attention from other media, as well. Morrison recalls fielding weekly calls asking, "What is this song? We want to put this in a movie."

Morrison and Sandler agreed that one of the high points in the station's history was breaking new artists. "I'm very proud of our role in helping to break Joan Osborne," Morrison says.

Sandler recalls Osborne's live, on-air performance in the "Music Hall," one of KSCA's trademark elements. "She did 'One Of Us,'" she says. "It was so amazing. Mike flipped, and we added that song. And then we watched her take off."

The real payoff came when Osborne committed to a free show at the Troubadour for KSCA listeners. A week after finalizing the deal, cross-town modern KROQ added Osborne. "At that point, we knew, 'OK, this is just going to be the hottest ticket in town.' We were going to have Joan Osborne at the Troubadour, and the sky was the limit. She could be all over MTV, and we would be doing this exclusive listeners-only Joan Osborne show," Morrison says.

MUSICAL NEIGHBORS

Flanked by modern AC KYSR (Star 98.7) and heritage rocker KLOS, Morrison says he worried more about the recently classic rock-sounding KLOS than Star. "A lot of people were saying this type of radio has to evolve into the Star format if it's going to be successful," says Morrison. "Well, guess what? Star, yesterday, added Celine Dion."

Modern ACs, Morrison says, "actively target females . . . It's not about owning artists. It's about playing songs you can sing along to." Adds Sandler, "Our audience is more musically intelligent . . . Music is a more important part of their life than the Star person who doesn't know what they're listening to."

However, "KLOS sounds a lot like we sound," says Morrison, noting such shared acts as U2, the Wallflowers, and Dave Matthews Band. "While there are differences, they have the edge, because they have the research, production, [and] mon-



A line of KSCA listeners wait to get into sold-out Joan Osborne show.

ey to market the thing. I may have a different take on the music, slightly, in that we don't play Van Halen, but that's such a subtlety. I don't think people even pick that up."

Sandler disagrees. "It's this philosophical argument that Mike and I had all the time," she says. "I would like us to be a lot more adventurous . . . I think if we had stayed true to the original vision of playing deeper album cuts and playing more new music and taking more chances, maybe it would have done better. It goes against all common sense when you know how radio works. But, I think people didn't come to us to hear what they could everywhere else."

ROCK GODZ

Tyler Rocks Greenville's The Planet, Earning Big Post-Country Points

Zakk Tyler has been fighting battles for active rock since his first days in his Pittsburgh hometown. There, he served under PD Buzz Casey as AMD/nights for WRRK. When Casey headed to Louisville, Ky., to put WTFX on that same musical terrain, Tyler was there as APD. While serving as MD/p.m. driver at WMFS Memphis last summer, Tyler was again approached by Casey, this time to flip Benchmark's country WFNQ Greenville, S.C., to active rock as WTPT (the Planet). With Tyler as first-time PD and Casey consulting, the station rocketed 1.6-6.1 12-plus in its first full book last fall.

WFNQ had been the subject of format-change rumors ever since a new owner flipped modern rock WXWX Greenville to oldies. While most market observers were expecting modern, Tyler says, he and Casey saw

of the audience that we're seeing now and are still branching out and achieving is pretty much untapped area. Really, these people weren't PIs for any of our direct competitors. I'm sure we're affecting both stations, but I think the bulk of our listeners right now are coming from people that really weren't being served by any radio station."

WTPT signed on only days before the fall book, was jockless for a month, with only Tyler on in afternoons for several weeks. But Tyler says that despite still not having a full air staff, the hunger for the Planet's music in the market more than makes up for what the station lacks at the mike. "If we were coming after somebody head-on, I think definitely staffing up, playing them head to head, would have been [more important]. We felt like we were going into unexplored territory with the format and confident about the success of the format," says Tyler. "We didn't lose anything by taking our time and finding the right people, instead of just throwing on anybody for the sake of having a full staff."

Without a full team, promotionally he's not yet "been able to go out and attack [with] the craziness that I like to do [for] word-of-mouth, water-cooler talk," Tyler says. So, with his earliest promotions, "I really wanted to stake our claim in our core artists and image around them, promotionally. So, we did bus trips to see bands like Soundgarden [and] flyaways for opening night on the Stone Temple Pilots tour."

Local businesses, too, have tied in with WTPT. Tyler says that of all his stations, this has been the best received by the business community. He chalks that up to this being the "least dark, most nonthreatening" of the stations that he's been involved with.

"I've evolved as a programmer to the point where I'm beyond the in-your-face sweepers and liners that I used at one time," Tyler says. "In Louisville, we were going after the heritage station. Here, we are more or less saying 'We're bringing something to the table that nobody else is doing.' Since we're not considering ourselves in direct competition with anybody, there's no bashing going on."

Gone are liners like "We blow out your speakers. They just blow." Instead, says Tyler, "we're more focused on highlighting the positives of our radio station, than calling attention to the weaknesses of some of the competitors."

Tyler points to the name "the Planet" as evidence of his evolution as a programmer. "It's 1997, and I really feel like using animal names is passé, [as is] using names that already have a prior image, like the Blaze or the Revolution."

The appeal of the Planet is, "We can image around the name and let people come up with their own interpretation of it," Tyler says. "You tune in, listen, and the product speaks for itself."

Further, there's a durability. "If we see a big shift in music like we did when 'Smells Like Teen Spirit' broke and all of a sudden hair bands were passé, if we can roll with the punches," says Tyler. "We can go with the flow, because our name is not limiting us to what we can do. It's not like we can't play a ballad because of the station name. It's not like we can't play a female artist. In this format, we need to prevent limiting ourselves or painting ourselves into a corner."

MARC SCHIFFMAN



Zakk Tyler (R)
PD, WTPT Greenville, S.C.
(with MD Jay Gleason)

"We can image around the name and let people come up with their own interpretation"

greater strength in being a " '90s rock station with a focus on new rock" and a recognition of the past. "What's so broad and so exciting about this radio station is that we're covering two formats that might be viable in this market," Tyler says. "I believe we do have a modern slant. We're serving that audience . . . I don't believe we're superserving it."

While most new product is targeted modern, Tyler asks, "Why limit yourself to just that audience? We could be so much more. I'm 28 years old, and I love hearing Van Halen next to Bush."

New music has to have some sort of guitar quotient. "One band we wouldn't have played was Primitive Radio Gods. Not enough guitar. I think we try to stay away from anything that would be associated with possibly dance . . . I really don't see us playing the new Depeche Mode."

And it is that new music that serves as the guide to what catalog is played. So while "Van Halen sounds fine after Bush, and so does Led Zeppelin," says Tyler, "I really don't think Lynyrd Skynyrd does." He lets heritage rock rival WROQ take up the southern rock mantle.

Here's a sample afternoon hour on WTPT: Collective Soul, "Precious Declaration"; Alice In Chains, "Man In The Box"; Van Halen, "Top Of The World"; Bush, "Everything Zen"; Metallica, "The Unforgiven"; Counting Crows, "A Long December"; U2, "Mysterious Ways"; Oasis, "Champagne Supernova"; Tonic, "Casual Affair"; Ozzy Osbourne, "Flying High Again"; and Stone Temple Pilots, "Trippin' On A Hole (In A Paper Heart)."

With WROQ and top 40 WFBC-FM (B93.7) as his closest competitors, Tyler sees nothing but open road. "Yes, there are three stations in Greenville that play Stone Temple Pilots, but I don't consider ourselves taking anybody on directly. I really feel that the bulk

SERVICES

VOICEOVERS

Get the Fun!
without the growl

KISS-FM, Los Angeles
B-96, Chicago
KISS-FM, Miami
KISS-FM, Dallas
DRQ, Detroit
Channel 933, San Diego

Sean Caldwell
PRODUCTIONS
Country CHR Rock RotAC
voice-over and imaging
(813) 926-1250

CARTER DAVIS
VOICE AND
PRODUCTION
FOR RADIO AND TV
Phone:
(901) 681-0650

CALL FOR FREE CUSTOM
STATION I.D. DEMO
1-800-843-3933
ISDN/DCI
WELCOME WMXV -
"THE BUZZ" NY

CAMERON • WOOD
PRODUCTIONS
natural, mature voice
imaging
Demo, info:
(415) 788-8761

Michael Carlucci
is **THE VOICE CHOICE**
Star, KFI-LA, 91X-S.D. P.A.
Anncr. Dodgers, Mighty Ducks,
Sony Playstation Sports, Nike,
Disney.
Liners • Promos • ID's • Spots
(714) 435-9774

MIKE MCCARTNEY
VOICE IMAGING

Overnite DAT, R to R or live
ISDN

KMBZ • WODJ • WHFB
THE KANSAS CITY ROYALS
RADIO NETWORK

Consistent, Dependable and
Affordable

(913) 894-4049

JINGLES

FINALLY ...
I.D. JINGLES YOU CAN AFFORD!
Call today for your free demo CD ...
ALL NEW FOR '96!
You'll hear how **great** inexpensive
jingles can sound!
KEN R. INCORPORATED
TOLL-FREE 1-800-451-KENR(5367)

CUSTOM CD's

Custom CD Compilations

Thousands of titles
to choose from...Call
for a catalog!

800-858-HITS

HELP WANTED

CHR MIDDAYS
100,000-watt KFFM seeks energetic,
production-intensive midday
announcer who works the phones
and enjoys personal appearances.
Minimum 2 years' experience. T&R:
Michael Jack Kirby, KFFM
P.O. Box 1460 • Yakima, WA 98907
EOE

**NIGHTS IN SAN DIEGO
ON KSON**

Extremely RARE fulltime
opening at San Diego's
KSON. We are looking for an
exciting, passionate evening
air personality. The person
we're looking for:

- PREPARES FOR EVERY SHOW
- USES PHONES CREATIVELY &
CONCISELY
- LOVES PERSONAL
APPEARANCES
- PUTS 100% INTO EACH &
EVERY BREAK

If you have lots of energy &
enthusiasm, and meet the
above criteria, RUSH T&R to:

Karen Webber,
Human Resources Director
1615 Murray Canyon Rd.,
Suite #710
San Diego, CA 92108

**NO PHONE CALLS WILL BE
ACCEPTED.**

JEFFERSON-PILOT COMMUNICATIONS
IS AN EQUAL OPPORTUNITY
EMPLOYER. FEMALES & MINORITIES
ENCOURAGED TO APPLY.

HELP WANTED

MORNING SHOW
Portland's NEW Modern AC
is looking for a morning
host. Are you creative,
topical, upbeat and real with
a sense of humor? Would
you like to live near the
mountains or ocean and
want to work for America's
best radio company? Then
rush your T&R to:

THE BEAT
c/o Michael Newman
2040 SW 1st Street
Portland, Oregon 97201
(no calls)

AMERICAN RADIO SYSTEMS IS AN
EQUAL OPPORTUNITY EMPLOYER.

**CREATIVE WRITING
PRODUCTION PRO
NEEDED**

We are one person short of
having the finest creative
production staff in the
southeast - can you write
and produce intelligent,
witty, creative, dramatic
production - agency quality
- without a lot of noisy
electronic effects? If you
can, send me proof.

Box 106
Airplay Monitor Classified
1515 Broadway
New York, NY 10036

PRODUCTION DIRECTOR
Young Country and Kiss 106
seek creative, organized
individual to head up fast
paced, fun Production Dept.
Minimum 5 years commercial
production experience
required. Digital editing
experience and knowledge of
computers a must. Send tape
and resume to:

Becky Brenner
P.O. Box 24888
Seattle, WA 98124
EOE

AIR PERSONALITY
Incredible opportunity in Los
Angeles for incredible talent.
You must be upbeat, natural
and able to relate to hip
female audience. Minimum 5
years major market on-air
experience required. Submit
tape and resume by 2/10/97 to:

AIR PERSONALITY
P.O. BOX 3925
GLENDALE, CA 91221-0925
EOE

HELP WANTED

PROGRAMMING OPPORTUNITY
Vermont Country seeks
creative on-air program
director. Females encouraged.
Great area. T&R to:
Joe Patrick, PBC
607 Greenwood
Lehigh, FL 33972
EOE

**AFTERNOON
PERSONALITY/PRODUCTION
DIRECTOR**
B94
Immediate Opening!
Large market CHR and/or Modern
Rock experience preferred. If you
relate naturally to the audience
without hype, overnight tape to:

B94, PD
680 Andersen Dr., Suite 200
Pittsburgh, PA 15220
EOE

**FUTURE ON-AIR
PERSONALITIES**
Albany metro AC accepting tapes
for future FT/AT. All shifts. T&R:
WJKE, KEN McGRAIL
21 MALTA COMMONS
MALTA, NY 12020
EOE

jacobs media
MORNING TALENT SEARCH
IS UNDER WAY BY
JACOBS MEDIA

Team or individual for Heritage
Rock station. If you can hit the
ground running with excellent
skills for localization,
community, and listener
involvement and are interested
in stability for long term
growth, forward your package
immediately to:

Jacobs Media
29777 Telegraph Road
Suite 3435
Southfield, Michigan 48034
No Phone Calls Please.
EOE/M/F/V/H

**ANNOUNCER
WANTED**

Established San Francisco AC has
rare opening for drivetime
announcer. Qualified candidates
will have a minimum of three
years major market experience in
a similar position and a verifiable
record in direct format
competition. You must possess
excellent people skills, street
smarts, creativity, be detail-
oriented and computer literate.
This position is open now. Total
confidentiality assured. Rush
resume & tape to:

KBLX
55 Hawthorne Street, Suite 900
San Francisco, CA 94105
Attention: Kevin Brown
No calls please.

KBLX IS AN EQUAL OPPORTUNITY EMPLOYER.

CLASSIFIED ADVERTISING RATES

HELP WANTED:
1 WEEK \$25.00 per inch
2 WEEKS \$20.00 per inch

POSITION WANTED:
\$45.00 per inch

BOX NUMBER: Add \$5.00

SERVICES:
1 WEEK \$75.00 per inch
6 WEEKS \$65.00 per inch
13 WEEKS \$60.00 per inch
26 WEEKS \$55.00 per inch
51 WEEKS \$50.00 per inch

DEADLINE (ALL CLASSIFIED):
Each Wednesday 3pm EST, 9 day leadtime.

• Classified ads are non-commissionable •

SUBMIT ALL AD COPY TO:
Laura Rivchun
Airplay Monitor Classified
1515 Broadway
New York, NY 10036

Phone: 212-536-5058
Fax: 212-536-8864/5055

AIRPLAY Monitor®

GREATEST GAINERS™

Broadcast Data Systems

Strongest Increase In Airplay This Week

MAINSTREAM ROCK INCREASE IN PLAYS

COLLECTIVE SOUL • Precious Declaration (ATLANTIC)	+1115
WRXC +39, KTXQ +32, KEGL +30, WLZR +28, KQRC +25, WNOR +25, KUPD +25, KRXQ +24, KILO +22, WIOT +22	
STONE TEMPLE PILOTS • Tumble In The Rough (ATLANTIC)	+265
KUFO +20, KEGL +19, KRXQ +16, WAAF +15, WXRA +14, KILO +14, WLZR +13, WRXC +11, KIOZ +11, WIYY +11	
BUSH • Greedy Fly (TRAUMA/INTERSCOPE)	+237
WBZX +21, KTUX +18, WKDF +16, KNCN +12, WIXV +11, WRXC +11, KISS +11, WTFX +10, KEGL +10, WRXL -8	
TOOL • H. (ZOO/VOLCANO)	+188
KRAD +14, KXUS +11, WJRR +9, KUFO +8, KTUX +8, KBER +8, KAZR +7, KLBJ +7, KBPI +7, WRIF +7	
SILVERCHAIR • Abuse Me (EPIC)	+158
KRAB +17, WYSP +15, WRXR +14, WKLS +13, WKDF +12, KLBJ +11, KBER +11, KRXQ +10, WTAK +7, KEGL +7	
VERUCA SALT • Volcano Girls (MINTY FRESH/OUTPOST/GEFFEN)	+151
WXTB +17, WARQ +16, WKDF +15, WZAT +14, KTUX +13, WZTA +12, KBPI +12, KISS +8, KQRC +7, KEZO -7	
THE VERVE PIPE • The Freshmen (RCA)	+150
WZTA +19, WIYY +13, WIOT +10, WWDC +10, WARQ +9, WJRR +9, KRXQ +8, KRZR +7, KLBJ +7, WIXV +6	
METALLICA • King Nothing (ELEKTRA/EEG)	+132
WIOT +15, KAZR +14, KNCN +13, WXTB +13, WPLR +11, KIOZ +10, WRXL +8, WBZX +7, WRDU +7, KLPX +5	
LIVE • Lakini's Juice (RADIOACTIVE/MCA)	+120
KEGL +13, KISW +12, KNCN +9, KIOZ +9, WVRK +8, KLBJ +8, WTFX +7, KTUX +7, KOMP +7, KRAB +7	
THE WALLFLOWERS • One Headlight (INTERSCOPE)	+117
WYSP +19, KFRQ +14, KTUX +12, WLVO +12, WFBQ +10, WZMT +9, WRXC +9, KEGL +9, WXTB +8, WNCD +7	

MODERN ROCK INCREASE IN PLAYS

COLLECTIVE SOUL • Precious Declaration (ATLANTIC)	+678
WRLG +32, KNDD +27, CIMX +24, WRXQ +23, WQBK +22, KTOZ +22, WQVE +21, WQXA +21, KNRX +20, KICT +18	
VERUCA SALT • Volcano Girls (MINTY FRESH/OUTPOST/GEFFEN)	+372
WKRL +21, WDGE +18, KTEG +18, KJEE +17, WXEG +17, WRZX +17, KGDE +17, WXRK +16, KEDJ +14, KPOI +11	
THE VERVE PIPE • The Freshmen (RCA)	+278
KWOD +20, KMYZ +20, KGDE +17, WLUM +17, KHXY +15, WXEG +14, WPLA +14, WAQZ +14, WBCN +14, WKQX +13	
SPACE • Female Of The Species (GUT REACTION/UNIVERSAL)	+262
CIMX +23, WXRK +17, KCXX +15, WPLY +14, KNNC +14, KLYY +12, KTOZ +12, WKQX +11, WHFS +10, WRXQ +9	
NO DOUBT • Excuse Me Mr. (TRAUMA/INTERSCOPE)	+235
WBCN +23, CIMX +21, WRLG +20, KWOD +20, KLZR +18, WRXQ +14, WROX +11, WBRU +11, KROQ +11, WZRH +10	
PORNO FOR PYROS • Hard Charger (WARNER BROS.)	+229
WRLG +20, WQBK +18, XTRA +14, KFRR +12, KXTE +11, WDRE +11, KOME +11, KTBZ +9, KXRK +9, WFNX +9	
WHITE TOWN • Your Woman (CHRYSALIS/EMI)	+218
CIMX +26, KJEE +18, WKQX +18, KFMA +15, KHXY +14, KGDE +14, KROX +12, KTCL +12, WNNX +12, KXPK +9	
THE WALLFLOWERS • One Headlight (INTERSCOPE)	+202
KDGE +27, WKQX +21, KNDD +17, WQBK +15, KGDE +14, KTBZ +13, KTOZ +12, WKRL +11, KISF +10, KCXX +9	
SUBLIME • Santeria (GASOLINE ALLEY/MCA)	+201
WQXA +17, WBRU +15, KISF +13, KPOI +12, WWCD +12, WDGE +11, KCXX +11, WCYY +11, KTOZ +11, KXTE +10	
LIVE • Lakini's Juice (RADIOACTIVE/MCA)	+177
WCYY +15, KISF +15, KCXX +13, KPOI +11, WPLA +10, KTEG +10, KTOZ +10, WRZX +9, WROX +9, KHXY +9	

VIDEO PLAYLISTS

MOST PLAYED ROCK TRACKS



	TW	LW		TW	LW
1 No Doubt, Don't Speak	31	21	11 No Doubt, Excuse Me Mr.	17	12
2 Jewel, You Were Meant For Me	28	17	12 Metallica, King Nothing	16	22
3 John Mellencamp, Just Another Day	26	19	13 The Offspring, All I Want	16	21
4 The Cardigans, Lovefool	23	16	14 Dave Matthews Band, Crash Into Me	14	17
5 Counting Crows, A Long December	23	17	15 Marilyn Manson, Tourniquet	14	14
6 Journey, When You Love A Woman	23	19	16 R.E.M., Electrolite	13	9
7 Sheryl Crow, If It Makes You Happy	21	24	17 Luscious Jackson, Naked Eye	13	11
8 Alanis Morissette, Head Over Feet	18	10	18 The Chemical Brothers, Setting Sun	12	13
9 The Wallflowers, One Headlight	16	12	19 Unsane, Scrape	12	21
10 Sheryl Crow, Everyday Is A Winding Road	16	7	20 Prodigy, Firestarter	11	11
11 Hootie & The Blowfish, Tucker's Town	13	7	21 The Smashing Pumpkins, Thirty-Three	10	15
12 Eric Clapton, Change The World	13	7	22 Sublime, Santeria	9	9
13 Seal, Fly Like An Eagle	13	12	23 Bloodhound Gang, Fire Water Burn	9	8
14 U2, Discotheque	13	11	24 Republica, Drop Dead Gorgeous	8	3
15 Jewel, Who Will Save Your Soul	10	4	25 Better Than Ezra, Desperately Wanting	7	4
16 Dishwalla, Counting Blue Cars	10	8	26 Fountains Of Wayne, Radiation Vibe	6	7
17 Duncan Sheik, Barely Breathing	9	7	27 Tricky, Christiansands	6	3
18 Paula Cole, Where Have All The Cowboys Gone?	8	2	28 Depeche Mode, Barrel Of A Gun	6	4
19 Donna Lewis, I Love You Always Forever	7	5	29 311, All Mixed Up	5	6
20 Tracy Chapman, Give Me One Reason	6	5	30 311, Down	5	5
21 John Mellencamp, Key West Intermezzo (I Saw You First)	6	2	31 Fun Lovin' Criminals, The Fun Lovin' Criminal	5	7
22 Alanis Morissette, Ironic	5	4	32 Sublime, What I Got	5	1
23 Simple Minds, Don't You (Forget About Me)	4	2	33 Presidents Of The United States Of America, Volcano	5	4
24 Chris Isaak, Wicked Game	4	2	34 Cake, I Will Survive	5	0
25 R.E.M., Shiny Happy People	4	2	35 Stone Temple Pilots, Lady Picture Show	4	11
26 Talking Heads, Burning Down The House	4	2	36 Veruca Salt, Volcano Girls	4	2
27 John Mellencamp With Me'shell Ndegeocello, Wild Night	4	2	37 No Doubt, Just A Girl	3	2
28 Dave Matthews Band, So Much To Say	4	3	38 Duncan Sheik, Barely Breathing	3	3
29 Fine Young Cannibals, She Drives Me Crazy	3	3	39 Bush, Swallowed	3	13
30 Fine Young Cannibals, Good Thing	3	2	40 Red Hot Chili Peppers, Give It Away	3	1

TRIPLE-A INCREASE IN PLAYS

ODDS • Someone Who's Cool (ELEKTRA/EEG)	+56
WHPT +10, WXLE +9, KMTT +9, WXRV +7, KFOG +7, KMBY +5, WMAX +5, WXRT +5, WJBX +2, WRLT +1	
VAN MORRISON • The Healing Game (POLYDOR/A&M)	+55
KGSR +16, KPIG +14, KMTT +9, KSCA +7, KFOG +6, WXRT +2, WXRV +1, WBOS +1	
FIONA APPLE • Sleep To Dream (CLEAN SLATE/WORK)	+52
WKOC +13, WHPT +11, CIDR +10, WBOS +7, KMBY +4, WJBX +4, WRLT +3, KMTT +3, WMAX +1, KTMN +1	
SHAWN COLVIN • Sunny Came Home (COLUMBIA)	+52
WVRV +17, CIDR +8, WXLE +7, KMTT +5, KFOG +5, WTTS +3, WKOC +3, WHPT +3, KTMN +2, KBCO +2	
R.E.M. • Electrolite (WARNER BROS.)	+52
WHPT +18, KBCO +11, WKOC +10, KGSR +8, KMBY +4, WTTS +4, WBOS +4, WJBX +3, WMAX +1, CIDR +1	
DUNCAN SHEIK • She Runs Away (ATLANTIC)	+41
WHPT +13, WTTS +7, KTMN +6, WXLE +5, WRLT +4, WMAX +3, WJBX +2, WVRV +2, KGSR +2, KINK +1	
THE SMASHING PUMPKINS • Thirty-Three (VIRGIN)	+40
WHPT +18, CIDR +14, WKOC +10, WVRV +7, WXLE +4, KTMN +1, WRLT +1	
COLLECTIVE SOUL • Precious Declaration (ATLANTIC)	+36
WKOC +12, WXRT +9, KMBY +7, KTMN +2, WXLE +2, KXPT +2, WXRV +1, KGSR +1	
WILLIAM TOPLEY • (I Don't Wanna Go) Uptown (MERCURY)	+35
WXRV +9, KMTT +8, KUMT +5, KGSR +4, KPIG +3, WRLT +2, WBOS +2, KMBY +1, KINK +1, WXLE +1	
PAULA COLE • Where Have All The Cowboys Gone? (IMAGO/WARNER BROS.)	+33
KQPT +13, KXPT +10, WJBX +6, KBCO +5, WXRV +3, WBOS +3, KFOG +3, KGSR +2, WMAX +1, WKOC +1	

VALLEJO

THE INCENDIARY DEBUT ALBUM, FEATURING THE SINGLE "JUST ANOTHER DAY"

NEW ADDS:

WRXC XHRM WKLQ KTXQ
KWHL WRAT KQWB KBPI

ALREADY ON:

KCXX WXPS KDEO WXRA
KLBJ WSTZ KRAD KTCL
WGRG KNRQ WDST KBER

SPINS AT:

KROX WQXA WXEG
KEGE WAFX KBER

SEE THEM AT THE GAVIN SEMINAR IN NEW ORLEANS!!! ON TOUR EVERYWHERE!!

TVT RADIO CONTACTS: John Perrone, Sudi Gaasche, Gary Jay, Zach Lanier @212.979.6410. OR Mark Jackson @ 818.347.9638

MAINSTREAM ROCK

POWER PLAYLISTS

AIRPLAY Monitor

For Week Ending February 2, 1997

Programs supported by Broadcast Data Systems' Radio Track service...

KSHE Table with columns for rank, artist, and title. Station PD: Rick Balis, MD: Al Hofer.

KTXQ Table with columns for rank, artist, and title. Station GM: Andy Lockridge, MD: Redbeard.

WZTA Table with columns for rank, artist, and title. Station PD: Gregg Steele, MD: Heidi Hess.

WEBN Table with columns for rank, artist, and title. Station OM: Jim Richards, MD: Scott Reinhart.

KSJO Table with columns for rank, artist, and title. Station PD: Dana Jang, MD: Laurie Free.

WJRR Table with columns for rank, artist, and title. Station PD: Dick Sheetz, MD: Pat Lynch.

WIYY Table with columns for rank, artist, and title. Station PD: Rick Strauss, MD: Rob Heckman.

WBZZ Table with columns for rank, artist, and title. Station PD: Hal Fish, APD/MD: Ronni Hunter.

WXTB Table with columns for rank, artist, and title. Station OM: Brad Hardin, MD: Brian Medlin.

WHJY Table with columns for rank, artist, and title. Station PD: Bill Weston, MD: Sharor Schifino.

WONE Table with columns for rank, artist, and title. Station PD: J.D., APD: Tim Daugherty.

WLZR Table with columns for rank, artist, and title. Station PD: Keith Hastings.

Wilco advertisement featuring a photo of the band and a quote from Entertainment Weekly: 'So fresh and unabashedly sincere that you don't just want to play it, you want to sleep with it under your pillow.'

Darlahood advertisement for their album 'Sister Dementia', featuring a photo of the band and promotional text.

POWER PLAYLISTS

For Week Ending February 2, 1997



Playlists supplied by Broadcast Data Systems Radio Track service. Songs ranked by number of plays in monitored week. Playlists are listed in order of TSA weekly count, beginning with the highest-counting station. Counts are updated twice yearly following the release of the Spring and Fall Arbitron surveys. The number of stations shown each week varies depending upon space.

Grid of 24 radio station playlists including WKDF, KISS, KBPI, WBAB, KQRC, KISW, KUPD, WLWQ, KUFO, KATT, KDKB, WROQ, KYYS, WDHA, KIOZ, WEGR, WPYX, WTFX, WCMF, WCKW, WIMZ, WTUE, KRXQ, and WRDU. Each station's playlist includes song titles, artists, and a TW/LW ranking column.

AIRPLAY Monitor

BDS IMPACT

DETECTIONS



*** AIRPOWER ***

(Minimum 800 detections for the first time)

Total Plays/Gain	Total Plays/Gain
<p>★ COLLECTIVE SOUL 1115/1115 <i>Precious Declaration (Atlantic)</i> Total Stations: 83/Chart Move: Debut 12 Heavy (21+ plays): 12 KAZR, KEGL, KILO, KQRC, KRXQ, KTUX, KUPD, WIOT, WLZR, WNOR, WRXW, WROV Medium (14-20): 28 KISS, KISW, KNCC, KRZR, KSHE, KSJO, KTYD, KUFO, WAAF, WBLM, WBZ, WEBN, WFBQ, WIYY, WJRR, WKDF, WKLQ, WKLS, WKQQ, WRDU, WRIF, WRXK, WRXL, WRXR, WTUE, WWDC, WZMT, WZTA Light (Under 14): 43</p>	<p>New Airplay This Week: 70 KATT, KAZR, KBER, KCAL, KEGL, KILO, KIOZ, KISS, KISW, KLAQ, KLPX, KNCC, KOMP, KQRC, KRXQ, KRZR, KSHE, KSJO, KTUX, KTXQ, KTYD, KUFO, KUPD, KXUS, KZRR, WAAF, WAPL, WBAB, WBLM, WBZ, WCCC, WCKW, WCMF, WDMA, WEBN, WFBQ, WHJY, WIOT, WIXV, WIYY, WJRR, WKDF, WKLC, WKLO, WKLS, WKQQ, WLZR, WNOR, WONE, WRXW, WRDU, WRIF, WROQ, WTPA, WTUE, WVRK, WRXR, WSTZ, WTFX, WTXB, WZTA, WZZO</p>

AIRPOWER BOUND

Total Plays/Gain

THE OFFSPRING 783/-8

All I Want (Columbia)
Total Stations: 61/Chart Move: 20-18
Heavy (21+ plays): 9 KAZR, KILO, KRAD, KSJO, WLZR, WNOR, WRXW, WXRA, WZAT
Medium (14-20): 15 KATT, KBER, KBPI, KEGL, KRXQ, KTUX, KUFO, KUPD, WAAF, WCCC, WKDF, WKLO, WRXL, WZTA, WZZO
Light (Under 14): 37
New Airplay This Week: 2 KEZO, WKLC

TOM PETTY AND THE HEARTBREAKERS 709/39

Change The Locks (Warner Bros.)
Total Stations: 50/Chart Move: 24-20
Heavy (21+): 11 KMOD, KTLA, KTYD, KXUS, WDMA, WMMR, WONE, WPHY, WRDU, WTKA, WZZR
Medium (14-20): 13 KLB, KLPX, KMJX, KNCC, KRZR, WBLM, WEGR, WIOT, WKLC, WPLR, WROQ, WROV, WSFL
Light (Under 14): 26
New Airplay This Week: 2 KOMP, WRXK

THE SMASHING PUMPKINS 653/103

Thirty-Three (Virgin)
Total Stations: 46/Chart Move: 26-24
Heavy (21+): 11 KISS, KLAQ, KRAB, KTUX, KTXQ, KTYD, WARQ, WKDF, WRXW, WXRA, WZAT
Medium (14-20): 13 KATT, KRXQ, KUFO, WCCC, WIXV, WIYY, WNOR, WTPA, WVRK, WYSP, WZMT, WZTA, WZZO
Light (Under 14): 22
New Airplay This Week: 6 KIOZ, KRZR, WBZ, WLZR, WRXR, WYSP

WIDESPREAD PANIC 647/82

Hope In A Hopeless World (Capricorn/Mercury)
Total Stations: 52/Chart Move: 25-25
Heavy (21+): 5 WAFV, WIMZ, WROV, WRXR, WZAT
Medium (14-20): 16 KLOS, KMJX, KMOD, KQRS, KTYD, KYYS, WAPL, WBAB, WDMA, WKLC, WNOR, WROQ, WTPA, WTUE, WZZO, WZZR
Light (Under 14): 31
New Airplay This Week: 6 KRZZ, WCKW, WXY, WIZN, WJRR, WLVO

BIG HEAD TODD & THE MONSTERS 543/111

Resignation Superman (Revolution)
Total Stations: 49/Chart Move: 32-28
Heavy (21+): 4 KILO, KTYD, KZRR, WAFV
Medium (14-20): 12 KEGL, KLOS, KMOD, KQRC, WAPL, WARQ, WDMA, WEGR, WPLR, WTPA, WYDC, WXRA
Light (Under 14): 33
New Airplay This Week: 8 KDKB, KFRQ, KNCC, WBLM, WOVE, WEGR, WRXL, WTKA

NINE INCH NAILS 471/25

The Perfect Drug (Nothing/Interscope)
Total Stations: 44/Chart Move: 31-31
Heavy (21+): 5 KILO, KISS, KRAD, KTXQ, WZTA
Medium (14-20): 9 KEGL, KRXQ, KTUX, KUFO, WAAF, WKLO, WRXR, WWDC, WXRA
Light (Under 14): 30
New Airplay This Week: 5 KRAB, WRXW, WRIF, WRXR, WZZO

MARILYN MANSON 416/61

Tourniquet (Nothing/Interscope)
Total Stations: 47/Chart Move: 40-33
Heavy (21+): 2 KTUX, WZAT
Medium (14-20): 9 KBER, KEGL, KILO, KIOZ, KRAD, KRZR, WKLO, WXTB, WZTA
Light (Under 14): 36
New Airplay This Week: 3 KQRC, WXX, WTFX

SHERYL CROW 412/61

Everyday Is A Winding Road (A&M)
Total Stations: 24/Chart Move: Debut 34
Heavy (21+): 8 KDKB, KTYD, WARQ, WAVF, WBLM, WRXW, WWDC, WXRA
Medium (14-20): 7 KLAQ, KLB, KMJX, WAPL, WMMR, WZZO, WZZR
Light (Under 14): 9
New Airplay This Week: 2 WHJY, WMMR

JOURNEY 395/-8

Can't Tame The Lion (Columbia)
Total Stations: 31/Chart Move: 36-36
Heavy (21+): 2 WCKW, WRDU
Medium (14-20): 12 KCAL, KDKB, KLPX, KMOD, KTLA, KXUS, WAPL, WBAB, WKLC, WNOR, WONE, WRXK
Light (Under 14): 17
New Airplay This Week: 2 KLAQ, WBLM

SOCIAL DISTORTION 385/33

When The Angels Sing (550 Music)
Total Stations: 37/Chart Move: Debut 38
Heavy (21+): 3 KIOZ, WWDC, WZAT
Medium (14-20): 11 KATT, KEGL, KQRC, KRAD, KRZR, KUFO, KUPD, WIYY, WJRR, WXRA, WZTA
Light (Under 14): 23
New Airplay This Week: 2 KUFO, WARQ

STONE TEMPLE PILOTS 377/265

Tumble In The Rough (Atlantic)
Total Stations: 34/Chart Move: Debut 39
Heavy (21+): 5 KILO, KRXQ, KUFO, WAAF, WXRA
Medium (14-20): 7 KAZR, KEGL, KRZR, KSJO, WIYY, WLZR, WWDC
Light (Under 14): 22
New Airplay This Week: 12 KEGL, KIOZ, KQRC, KTUX, KTYD, KUPD, WIXV, WLZR, WRXW, WRXL, WWDC, WXTB

CHART BOUND

ERIC JOHNSON 358/24

S.R.V. (Capitol)
Total Stations: 31
Heavy (21+): 3 KLB, KMOD, KSHE
Medium (14-20): 7 KEGL, KMJX, KNCC, KQRS, KTUX, WAPL, WRDU
Light (Under 14): 21
New Airplay This Week: 4 KCAL, KLOS, KLPX, WKLC

DAVE MATTHEWS BAND 356/27

Crash Into Me (RCA)
Total Stations: 28
Heavy (21+): 4 KTLA, KTYD, WARQ, WRXR
Medium (14-20): 8 WBLM, WDMA, WEZ, WHJY, WMMR, WPLR, WROV, WWDC
Light (Under 14): 16

MOST NEW AIRPLAY THIS WEEK

	No. Of Stations
COLLECTIVE SOUL <i>Precious Declaration (Atlantic)</i>	70
TOOL <i>H. (Zoo/Volcano)</i>	21
STONE TEMPLE PILOTS <i>Tumble In The Rough (Atlantic)</i>	12
TONIC <i>Casual Affair (Polydor/A&M)</i>	10
THE VERVE PIPE <i>The Freshmen (RCA)</i>	9

VERUCA SALT 315/151

Volcano Girls (Minty Fresh/Outpost/Geffen)
Total Stations: 33
Heavy (21+): 3 KILO, WXRA, WZAT
Medium (14-20): 9 KEZO, KQRC, KRXQ, KTUX, KTXQ, WARQ, WKDF, WXTB, WZTA
Light (Under 14): 21
New Airplay This Week: 8 KBPI, KISS, KTUX, WARQ, WKDF, WKLO, WXTB, WZTA

GARBAGE 295/19

#1 Crush (Capitol)
Total Stations: 25
Heavy (21+): 6 KRAB, KTUX, KTXQ, WAVF, WRXR, WXRA
Medium (14-20): 2 KBPI, WWDC
Light (Under 14): 17
New Airplay This Week: 1 WKDF

THE VERVE PIPE 274/150

The Freshmen (RCA)
Total Stations: 58
Heavy (21+): 3 WAAF, WARQ, WKLO
Medium (14-20): 3 KRZR, WIXV, WZTA
Light (Under 14): 52
New Airplay This Week: 9 KLB, KRXQ, WAPL, WIOT, WIYY, WJRR, WRIF, WWDC, WZTA

TOOL 269/188

H. (Zoo/Volcano)
Total Stations: 47
Heavy (21+): 0
Medium (14-20): 2 KIOZ, KRAD
Light (Under 14): 45
New Airplay This Week: 21 KAZR, KBER, KBPI, KISW, KLB, KNCC, KQRC, KRAD, KRXQ, KRZR, KSJO, KTUX, KUFO, KXUS, KZRR, WAAF, WJRR, WNOR, WRXW, WRIF, WSTZ

NUMO 248/23

Gravity (A&M)
Total Stations: 28
Heavy (21+): 2 WAAF, WZAT
Medium (14-20): 3 KEGL, KTUX, WLZR
Light (Under 14): 23
New Airplay This Week: 3 KISS, WBZ, WNCC

EELS 245/47

Rags To Rags (DreamWorks/Geffen)
Total Stations: 32
Heavy (21+): 3 KTUX, WARQ, WZAT
Medium (14-20): 5 KRXQ, KRZR, KZRR, WRXR, WXRA
Light (Under 14): 24
New Airplay This Week: 3 KRAD, WIXV, WZZR

THE BLACK CROWES 224/77

Better When You're Not Alone (American/Reprise)
Total Stations: 30
Heavy (21+): 0
Medium (14-20): 5 KYYS, WEGR, WKLC, WPLR, WZZR
Light (Under 14): 25
New Airplay This Week: 6 KMJX, KOMP, KXUS, WIZN, WMMR, WPLR

WILCO 220/53

Outtastie (Outta Mind) (Reprise)
Total Stations: 29
Heavy (21+): 0
Medium (14-20): 5 KISS, KTYD, WAPL, WARQ, WFBQ, WXRA
Light (Under 14): 23
New Airplay This Week: 4 KXUS, WOVE, WKDF, WSTZ

THIRD DAY 208/62

Nothing At All (Silvertone)
Total Stations: 24
Heavy (21+): 3 KEGL, KILO, WZAT
Medium (14-20): 1 KMOD
Light (Under 14): 20
New Airplay This Week: 5 KRAD, WARQ, WTFX, WTUE, WZZR

CRAVIN' MELON 184/58

Come Undone (Mercury)
Total Stations: 22
Heavy (21+): 2 WAVF, WRXR
Medium (14-20): 3 WARQ, WROQ, WROV
Light (Under 14): 17
New Airplay This Week: 4 WAPL, WCKW, WTPA, WTUE

POE 173/-6

Hello (Modern/Atlantic)
Total Stations: 24
Heavy (21+): 2 KISS, WJRR
Medium (14-20): 4 KBER, KBPI, WAAF, WXRA
Light (Under 14): 18

SUBLIME 168/30

Santeria (Gasoline Alley/MCA)
Total Stations: 14
Heavy (21+): 3 WAFV, WWDC, WZAT
Medium (14-20): 2 KBPI, KTUX
Light (Under 14): 9
New Airplay This Week: 1 WRXR

JONNY LANG 168/47

Lie To Me (A&M)
Total Stations: 17
Heavy (21+): 2 KGGO, KLPX
Medium (14-20): 5 KEZO, KMOD, KQRS, KXUS, KYYS
Light (Under 14): 10
New Airplay This Week: 3 KLOS, KRZZ, WRXK

DC TALK 138/44

Jesus Freak (Forefront/Virgin)
Total Stations: 19
Heavy (21+): 0
Medium (14-20): 3 KISS, KRXQ, WXRA
Light (Under 14): 16
New Airplay This Week: 4 KEGL, KILO, KNCC, WKLO

★ STORYVILLE 128/103

Blind Side (Code Blue/Atlantic)
Total Stations: 17
Heavy (21+): 0
Medium (14-20): 2 WAPL, WEGR
Light (Under 14): 15
New Airplay This Week: 7 KMOD, KXUS, KYYS, WEGR, WFBQ, WPLR, WROQ

NO DOUBT 125/9

Don't Speak (Trauma/Interscope)
Total Stations: 12
Heavy (21+): 2 WPHY, WRXR

Medium (14-20): 2 KRAB, WWDC
Light (Under 14): 8
New Airplay This Week: 1 KTUX

R.E.M. 120/44

Electrolite (Warner Bros.)
Total Stations: 13
Heavy (21+): 2 WARQ, WMMR
Medium (14-20): 0
Light (Under 14): 11
New Airplay This Week: 3 KLOS, KRAB, WIZN

★ KULA SHAKER 111/39

Hey Dude (Columbia)
Total Stations: 21
Heavy (21+): 0
Medium (14-20): 3 KILO, KRXQ, KTYD
Light (Under 14): 18
New Airplay This Week: 5 KRAD, WARQ, WCCC, WSTZ, WVRK

RED HOT CHILI PEPPERS 110/9

Love Rollercoaster (Geffen)
Total Stations: 12
Heavy (21+): 2 KTUX, WRXR
Medium (14-20): 2 KBPI, WZAT
Light (Under 14): 8

SENSE FIELD 103/27

Different Times (Revelation/Warner Bros.)
Total Stations: 15
Heavy (21+): 1 WXRA
Medium (14-20): 4 KQRC
Light (Under 14): 13
New Airplay This Week: 2 KRZR, WCCC

MIGHTY JOE PLUM 100/24

Live Through This (Atlantic)
Total Stations: 4
Heavy (21+): 2 WJRR, WZTA
Medium (14-20): 2 WEBN, WXTB
Light (Under 14): 0
New Airplay This Week: 1 WEBN

EELS 96/1

Novocaine For The Soul (DreamWorks/Geffen)
Total Stations: 9
Heavy (21+): 1 KRAB
Medium (14-20): 2 KRAD, WWDC
Light (Under 14): 6

CAKE 96/13

I Will Survive (Capricorn/Mercury)
Total Stations: 17
Heavy (21+): 1 WARQ
Medium (14-20): 2 KBPI, KRAD
Light (Under 14): 14
New Airplay This Week: 1 WKDF

★ KORN 94/20

A.D.I.D.A.S. (Immortal/Epic)
Total Stations: 22
Heavy (21+): 1 KILO
Medium (14-20): 0
Light (Under 14): 21
New Airplay This Week: 2 KBER, KISS

★ CORROSION OF CONFORMITY 91/41

King Of The Rotten (Columbia)
Total Stations: 13
Heavy (21+): 0
Medium (14-20): 2 KAZR, WAAF
Light (Under 14): 11
New Airplay This Week: 5 KBER, KEGL, KQRC, WAAF, WKLO

★ THE GUFFS 83/12

Smile (Atlantic)
Total Stations: 5
Heavy (21+): 2 KAZR, WLZR
Medium (14-20): 1 WKLO
Light (Under 14): 2

★ DOWNSSET 76/23

Pocket Full Of Fatcaps (Mercury)
Total Stations: 15
Heavy (21+): 0
Medium (14-20): 1 WXRA
Light (Under 14): 14
New Airplay This Week: 2 WXRA, WZMT

Airpower awarded to those records which attain 800 detections for the first time. New airplay lists those stations registering six or more detections per week on a record for the first time. ★ Initial impact: records appearing on this page for the first time.



SONG ACTIVITY REPORTS



For Week Ending February 2, 1997

Detailed song tracking information for the last 3 weeks for all songs showing increased play this week. Total plays and gain do not include video play. Markets listed in order of population.

Table with 12 columns: Song Title, Artist, Total Plays, Gain, and 10 market columns (L.A., Chicago, Phila., etc.). Rows include: BETTER THAN EZRA (1116/12), BIG HEAD TODD & THE MONSTERS (543/111), BUSH (1400/237), COLLECTIVE SOUL (1115/1115), COUNTING CROWS (1031/87), SHERYL CROW (412/61), LIVE (1950/120), MARILYN MANSON (416/61), METALLICA (1227/132), NINE INCH NAILS (471/25).



SONG ACTIVITY REPORTS



For Week Ending February 2, 1997

Detailed song tracking information for the last 3 weeks for all songs showing increased play this week. Total plays and gain do not include video play. Markets listed in order of population.

Table for TOM PETTY AND THE HEARTBREAKERS 709/39. Includes columns for Total Stations (50), Chart Move (24-20), and station data for various markets like L.A., Chicago, Phila., etc.

Table for SILVERCHAIR Abuse Me (Epic) 1446/158. Includes columns for Total Stations (84), Chart Move (5-4), and station data for various markets like L.A., Chicago, Phila., etc.

Table for THE SMASHING PUMPKINS 653/103. Includes columns for Total Stations (46), Chart Move (26-24), and station data for various markets like L.A., Chicago, Phila., etc.

Table for SOCIAL DISTORTION 385/33. Includes columns for Total Stations (37), Chart Move (Debut 38), and station data for various markets like L.A., Chicago, Phila., etc.

Table for SPONGE Have You Seen Mary (Columbia) 1194/3. Includes columns for Total Stations (90), Chart Move (9-9), and station data for various markets like L.A., Chicago, Phila., etc.

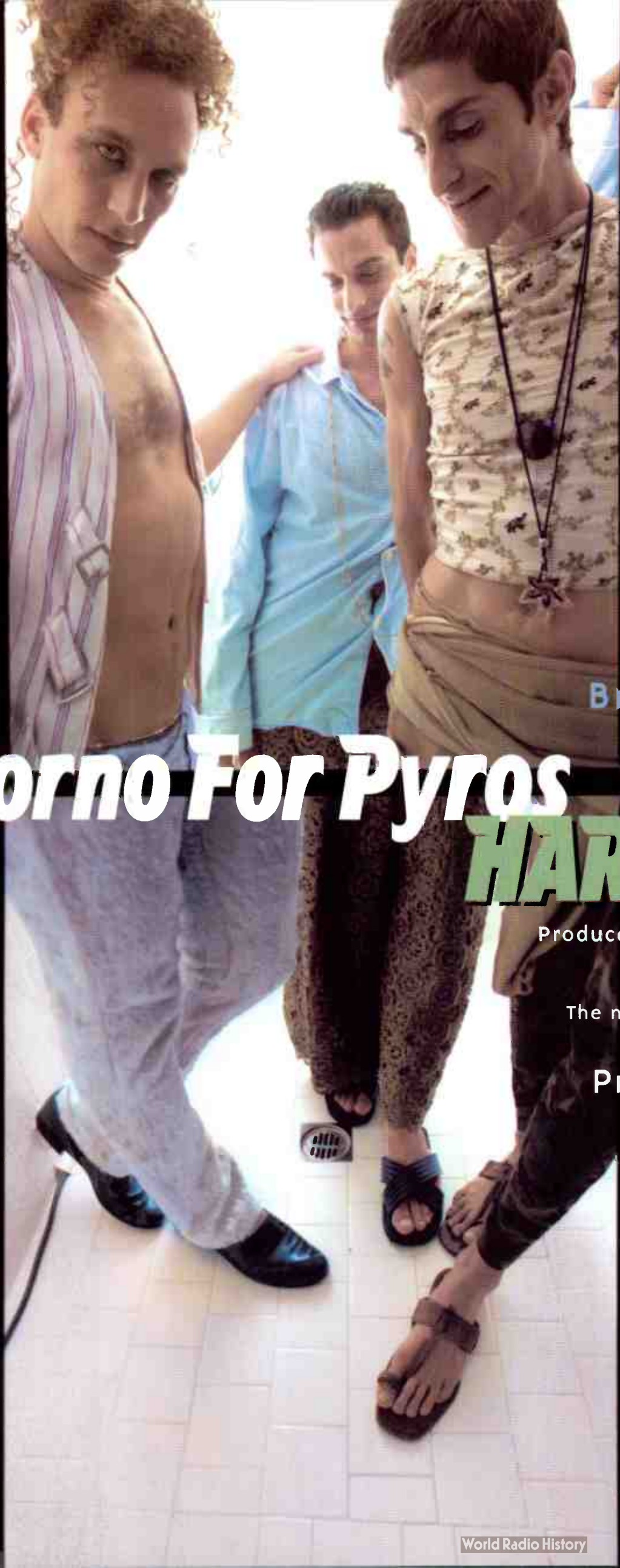
Table for STONE TEMPLE PILOTS 377/265. Includes columns for Total Stations (34), Chart Move (Debut 39), and station data for various markets like L.A., Chicago, Phila., etc.

Table for TONIC Casual Affair (Polydor/A&M) 990/113. Includes columns for Total Stations (75), Chart Move (17-15), and station data for various markets like L.A., Chicago, Phila., etc.

Table for U2 Discotheque (Island) 1298/72. Includes columns for Total Stations (80), Chart Move (7-6), and station data for various markets like L.A., Chicago, Phila., etc.

Table for THE WALLFLOWERS 2023/117. Includes columns for Total Stations (94), Chart Move (1-1), and station data for various markets like L.A., Chicago, Phila., etc.

Table for WIDESPREAD PANIC Hope In A Hopeless World (Capricorn/Mercury) 647/82. Includes columns for Total Stations (52), Chart Move (25-25), and station data for various markets like L.A., Chicago, Phila., etc.



MODERN ROCK

**OVER 300 BDS SPINS IN JUST
3 DAYS OF AIRPLAY!**

MOST ADDED INCLUDING:

KROQ	WFNX	KPNT	KXRK
WXRK	KDGE	KTCL	WROX
Q101	WHFS	KEDJ	WDGE
KOME	KTBZ	91X	WBRU
LIVE 105	WENZ	KLZR	and
WBCN	KREV	WAGZ	more!

MAINSTREAM ROCK

ONE OF THE MOST ADDED:

WAAF	KISS	WZMT
WZTA	WKLG	KTUX
WWDC	WCCC	and many
KRXQ	KZRR	more!

Brand new Porno.

Porno For Pyros

HARD CHARGER

Produced by John King and Perry Farrell.

The new lead track from

HOWARD STERN PRIVATE PARTS: THE ALBUM.

The soundtrack album from the
motion picture by Rysher Entertainment
and Paramount Pictures.



**ADD
Heavy**

**World Premiere
Video all day
Thursday 2/6 on MTV**

On Warner Bros. CD's and cassettes.

Management:
Roger Leonard for CloudBreak Management



www.wbr.com/radio

©1997 Rysher Entertainment, Inc.
©1997 Warner Bros. Records Inc.

POWER PLAYLISTS



AIRPLAY Monitor For Week Ending February 2, 1997

Playlists compiled by Broadcast Data Systems' Radio Track service... Songs ranked by number of plays in monitored week...

WXRK New York PD: Steve Kingston APD/MD: Alexa Tebin. Playlist table with 30 numbered entries including Live, Lakini's Juice, U2, Discotheque, Metallica, Hero Of The Day, Soundgarden, Burden In My Hand, The Smashing Pumpkins, Muzzle, Nirvana, Drain You, Sublime, What I Got, Nine Inch Nails, Perfect Drug, 311, All Mixed Up, Garbage, #1 Crush, Red Hot Chili Peppers, Love Rollercoaster, Bush, Swallowed, Tool, Slnkfst, Silverchair, Abuse Me, Dave Matthews Band, Crash Into Me, Bush, Greedy Fly, Offspring, All I Want, The Cardigans, Lovefool, Depeche Mode, Barrel Of A Gun, Soul Coasting, Super Bon Bon, Sublime, Santana, Luscious Jackson, Naked Eye, Counting Crows, A Long December, Soundgarden, Blow Up The Outside World, Stone Temple Pilots, Lady Picture Show, Space, Female Of The Species, The Smashing Pumpkins, Thirty-Three, Sheryl Crow, Everyday Is A Winding Road, Veruca Salt, Volcano Girls, Beck, The New Pollution.

KROQ Los Angeles PD: Kevin Weatherly APD: Gene Saadbloom. Playlist table with 30 numbered entries including White Town, Your Woman, Bush, Greedy Fly, Live, Lakini's Juice, Sablime, Santana, U2, Discotheque, Veruca Salt, Volcano Girls, Space, Female Of The Species, 311, Don't Stay Home, The Smashing Pumpkins, Thirty-Three, Silverchair, Abuse Me, Beck, The New Pollution, Counting Crows, A Long December, Dave Matthews Band, Crash Into Me, No Doubt, Excuse Me Mr, Garbage, #1 Crush, Bush, Swallowed, Squirrel Nut Zippers, Hell, Offspring, All I Want, Local H, Bound For The Floor, The Cardigans, Lovefool, 311, All Mixed Up, The Verve Pipe, The Freshmen, Sublime, What I Got, Jewel, You Were Meant For Me, Depeche Mode, Barrel Of A Gun, Prodigy, Firestarter, Nine Inch Nails, Perfect Drug, The Smashing Pumpkins, 1979, Beck, Where It's At.

WKQX Chicago PD: Bill Gamble APD/MD: Mary Shuminas. Playlist table with 30 numbered entries including Oasis, Whatever, The Wallflowers, One Headlight, Counting Crows, A Long December, Nine Inch Nails, Perfect Drug, Space, Female Of The Species, The Cardigans, Lovefool, Silverchair, Abuse Me, Sublime, Santana, The Smashing Pumpkins, Thirty-Three, The Verve Pipe, The Freshmen, U2, Discotheque, Bush, Greedy Fly, Local H, Bound For The Floor, Live, Lakini's Juice, Soul Coasting, Super Bon Bon, Republica, Drop Dead Gorgeous, Offspring, All I Want, The Cardigans, Lovefool, White Town, Your Woman, Underworld, Born Slippy, Prodigy, Firestarter, Korn, A.I.D.S., Porno For B.S., Haci Carater, Bloodhound Gang, Fire Water Burn, Veruca Salt, Volcano Girls, Sheryl Crow, Everyday Is A Winding Road, No Doubt, Excuse Me Mr, Garbage, #1 Crush, The Smashing Pumpkins, 1979, Filter, Hey Man Nice...hot.

WPLY Philadelphia MD: Doug Kubinski. Playlist table with 30 numbered entries including 311, All Mixed Up, The Cardigans, Lovefool, Counting Crows, A Long December, U2, Discotheque, No Doubt, Don't Speak, Bush, Swallowed, Stone Temple Pilots, Lady Picture Show, Live, Lakini's Juice, Red Hot Chili Peppers, Love Rollercoaster, Lemonheads, If I Could Talk I'd Tell You, Dave Matthews Band, Crash Into Me, Sublime, What I Got, Blues Traveler, But Anyway, Sheryl Crow, Everyday Is A Winding Road, Duncan Sheik, Barely Breathing, The Cranberries, When You're Gone, Better Than Ezra, Desperately Wanting, Stone Temple Pilots, Trippin' In A Hole, The Wallflowers, One Headlight, Jewel, You Were Meant For Me, The Smashing Pumpkins, Thirty-Three, Luscious Jackson, Naked Eye, Cake, The Distance, Bush, Machinehead, 24 Soundgarden, Burden In My Hand, Soundgarden, Blow Up The Outside World, Soundgarden, Burden In My Hand, Stone Temple Pilots, Tumble In The Rough, Stone Temple Pilots, Lady Picture Show, Fun Lovin' Criminals, The Fun Lovin' Criminals, Precious Declaration, Nirvana, Drain You, The Verve Pipe, The Freshmen.

WBCN Boston VP/Prgm Oedipus MD: Carter Alan. Playlist table with 30 numbered entries including Live, Lakini's Juice, Silverchair, Abuse Me, U2, Discotheque, Dave Matthews Band, Crash Into Me, Bush, Greedy Fly, Depeche Mode, Barrel Of A Gun, Moby, That's When I Reach For My Revolver, The Smashing Pumpkins, Thirty-Three, Metallica, Hero Of The Day, No Doubt, Excuse Me Mr, Offspring, All I Want, Beck, The New Pollution, U2, Rattle and Hum, The Wallflowers, One Headlight, Poe, Hello, Better Than Ezra, Desperately Wanting, Social Distortion, When The Angels Sang, Counting Crows, A Long December, Kula Shaker, Hey Dudes, Collective Soul, Precious Declaration, Nine Inch Nails, Perfect Drug, Ashley MacIsaac, Sleepy Maggie, Soundgarden, Blow Up The Outside World, Soundgarden, Burden In My Hand, Stone Temple Pilots, Tumble In The Rough, Stone Temple Pilots, Lady Picture Show, Fun Lovin' Criminals, The Fun Lovin' Criminals, Precious Declaration, Nirvana, Drain You, The Verve Pipe, The Freshmen.

WHFS Washington, DC PD: Robert Benjamin APD: Bob Waugh. Playlist table with 30 numbered entries including Sublime, Santana, The Cardigans, Lovefool, Live, Lakini's Juice, 311, All Mixed Up, Dave Matthews Band, Crash Into Me, Space, Female Of The Species, U2, Discotheque, Silverchair, Abuse Me, Counting Crows, A Long December, Bloodhound Gang, Fire Water Burn, Sneaker Pimps, 6 Underground, The Wallflowers, One Headlight, Nine Inch Nails, Perfect Drug, Sublime, What I Got, Garbage, #1 Crush, The Verve Pipe, The Freshmen, Stone Temple Pilots, Lady Picture Show, Bush, Greedy Fly, Better Than Ezra, Desperately Wanting, Local H, Bound For The Floor, Collective Soul, Precious Declaration, Cake, The Distance, The Verve Pipe, The Freshmen, Mundy, To You I Belong, Counting Crows, A Long December, The Wallflowers, One Headlight, Sublime, Santana, 311, All Mixed Up, No Doubt, Excuse Me Mr, Cake, The Distance, Beck, The New Pollution, Stone Temple Pilots, Tumble In The Rough, Tricky, Christmassads, 311, Dawn, Soundgarden, Blow Up The Outside World, Offspring, All I Want, Moby, That's When I Reach For My Revolver, Garbage, #1 Crush, Luscious Jackson, Naked Eye, Depeche Mode, Barrel Of A Gun, Red Hot Chili Peppers, Love Rollercoaster, No Doubt, Excuse Me Mr, Fiona Apple, Sleep To Dream, David Bowie, Little Wonder.

WHYT Detroit PD: Garrett Michaels APD/MD: Alex Tear. Playlist table with 30 numbered entries including Barenaked Ladies, The Old Apartment, Sublime, What I Got, 311, All Mixed Up, No Doubt, Don't Speak, The Cardigans, Lovefool, Toxic, Open Up Your Eyes, Luscious Jackson, Naked Eye, Blues Traveler, But Anyway, Better Than Ezra, Desperately Wanting, U2, Discotheque, Jewel, You Were Meant For Me, Stone Temple Pilots, Lady Picture Show, Depeche Mode, Barrel Of A Gun, Sarah McLachlan, Possession, Dave Matthews Band, Crash Into Me, Sheryl Crow, Everyday Is A Winding Road, Garbage, #1 Crush, Live, Lakini's Juice, Tori Amos, Silent All These Years, The Verve Pipe, The Freshmen, Go Go Belts, Long Way Down, Silverchair, Abuse Me, Sublime, Santana.

WNNX Atlanta PD: Brian Philips APD: Leslie Fram. Playlist table with 30 numbered entries including Better Than Ezra, Desperately Wanting, U2, Discotheque, Silverchair, Abuse Me, Live, Lakini's Juice, Prodigy, Firestarter, The Smashing Pumpkins, Thirty-Three, Metallica, Hero Of The Day, Cake, I Will Survive, Depeche Mode, Barrel Of A Gun, Sheryl Crow, Everyday Is A Winding Road, Dave Matthews Band, Crash Into Me, Redd Kross, Stoned, Bush, Greedy Fly, Collective Soul, Precious Declaration, The Verve Pipe, The Freshmen, Failure, Stuck On You, Wilco, Outcaste, Sublime, Santana, No Doubt, Happy Now, Veruca Salt, Volcano Girls, 21 James, She's A Star, Fun Lovin' Criminals, The Fun Lovin' Criminals, Precious Declaration, Counting Crows, A Long December, Sublime, What I Got, Luscious Jackson, Naked Eye, The Suicide Machines, No Face, No Doubt, Excuse Me Mr, Spoon, Have You Seen Her, Sebadoh, Willing To Wait, Tool, H.

KITS San Francisco VP/Prgm.: Richard Sands APD: Roland West. Playlist table with 30 numbered entries including White Town, Your Woman, Luscious Jackson, Naked Eye, Live, Lakini's Juice, The Cardigans, Lovefool, The Smashing Pumpkins, Thirty-Three, U2, Discotheque, Silverchair, Abuse Me, OMC, How Bizarre, Cake, I Will Survive, Nine Inch Nails, Perfect Drug, Mundy, To You I Belong, Counting Crows, A Long December, The Wallflowers, One Headlight, Sublime, Santana, 311, All Mixed Up, No Doubt, Excuse Me Mr, Cake, The Distance, Beck, The New Pollution, Stone Temple Pilots, Tumble In The Rough, Tricky, Christmassads, 311, Dawn, Soundgarden, Blow Up The Outside World, Offspring, All I Want, Moby, That's When I Reach For My Revolver, Garbage, #1 Crush, Luscious Jackson, Naked Eye, Depeche Mode, Barrel Of A Gun, Red Hot Chili Peppers, Love Rollercoaster, No Doubt, Excuse Me Mr, Fiona Apple, Sleep To Dream, David Bowie, Little Wonder.

KDGE Dallas PD: Joel Folger MD: Mike Peer. Playlist table with 30 numbered entries including The Wallflowers, One Headlight, Red Hot Chili Peppers, Love Rollercoaster, Counting Crows, A Long December, U2, Discotheque, OMC, How Bizarre, The Cardigans, Lovefool, Garbage, #1 Crush, No Doubt, Don't Speak, Cake, The Distance, Luscious Jackson, Naked Eye, Better Than Ezra, Desperately Wanting, Bush, Swallowed, Silverchair, Abuse Me, Social Distortion, I Was Wring, Live, Lakini's Juice, Stone Temple Pilots, Lady Picture Show, Bush, Greedy Fly, Depeche Mode, Barrel Of A Gun, The Smashing Pumpkins, Thirty-Three, Seven Mary Three, Cumber-joe, Matchbox 20, Long Day, Space, Female Of The Species, Sublime, Santana, Veruca Salt, Volcano Girls, 311, Gap, No Doubt, Excuse Me Mr, Collective Soul, Precious Declaration, Sheryl Crow, Everyday Is A Winding Road, 311, Dawn, Prodigy, Firestarter.

KEGE Minneapolis PD: John Lassman MD: Wade Linder. Playlist table with 30 numbered entries including Sheryl Crow, Everyday Is A Winding Road, Counting Crows, A Long December, Local H, Bound For The Floor, The Wallflowers, One Headlight, Better Than Ezra, Desperately Wanting, Live, Lakini's Juice, U2, Discotheque, Silverchair, Abuse Me, Veruca Salt, Volcano Girls, Beck, The New Pollution, Nine Inch Nails, Perfect Drug, The Cardigans, Lovefool, Oasis, Whatever, Jewel, You Were Meant For Me, Matchbox 20, Long Day, Bush, Swallowed, Garbage, #1 Crush, Sublime, Santana, Squirrel Nut Zippers, Hell, Lash Androone, It's Alright That's OK, Republica, Drop Dead Gorgeous, Weezer, The Good Life, Beck, Devil's Haircut, Depeche Mode, Barrel Of A Gun, Bush, Greedy Fly, Bloodhound Gang, Fire Water Burn, James, She's A Star, Dave Matthews Band, Crash Into Me, Offspring, All I Want, Luscious Jackson, Naked Eye.

WMMS Cleveland PD: Bob Neumann APD "Spaceman" Scott Hughes. Playlist table with 30 numbered entries including Bush, Greedy Fly, Alice In Chains, World, Offspring, All I Want, Better Than Ezra, Desperately Wanting, Matchbox 20, Long Day, Sponge, Have You Seen Mary, Bariahad, Grow Your Own, U2, Discotheque, Live, Lakini's Juice, The Wallflowers, One Headlight, Poe, Hello, Metallica, Ring Nothing, Eels, Rags To Rag, Counting Crows, A Long December, Sir, Itsy Bitsy, Sublime, What I Got, Presidents Of The United States, Mach 5, Wilco, Outcaste, Tom Petty & The Heartbreakers, Change The Beat, Metallica, Hero Of The Day, The Hunger, Vain Thing Cram, Big Head Todd & The Monsters, Resignation, Corrosion Of Conformity, Drowning In A, Weezer, The Good Life, Mundy To You I Belong, Nine Inch Nails, Perfect Drug, Pearl Jam, Black Red Yellow, Collective Soul, Precious Declaration, Fountain Of Wayne, Radiation Tube, Silverchair, Abuse Me.

prodigy



firestarter

LIVE 105 RE-ADD! NEW ADDS THIS WEEK.

WBCN KOME 89X KROX WRXQ KTDZ WDST KFRR

ON FIRE AT:

LDGE 15x #1 PHONES KROQ 15x WHFS 15x #1 PHONES 99X 28x WBRU 15x #1 PHONES WFNX 35x WXEG 15x #1 PHONES KNDD 15x Q101 18x #3 PHONES WXRK 13x WENZ 15x #3 PHONES WLBM 28x KPNT 10x #3 PHONES KDGE 14x X96 33x #3 PHONES 91X 14x XHRM 15x #3 PHONES WNVE 15x #3 PHONES WPLA 17x #3 PHONES



POWER PLAYLISTS

For Week Ending February 2, 1997



Playlists supplied by Broadcast Data Systems. Radio Trade Service. Songs ranked by number of plays in monitored week. Playlists are listed in order of TSA weekly count, beginning with the highest-counting station. Songs are updated twice weekly following the release of the Spring and Fall Arbitron surveys. The number of stations shown each week varies depending upon space.

WLIR Long Island PD: John Caracciolo DM: Jim McGuinn. Top 30 playlist including Jewel, You Were Meant For Me, The Cardigans, Lovelife, etc.

KXPX Denver PD: Doug Clifton APD/MD: Gary Schoenwetter. Top 30 playlist including The Cardigans, Lovelife, Better Than Ezra, Desperately Wanting, etc.

WLUM Milwaukee PD: Tommy Wilde APD: Chuck Summers. Top 30 playlist including The Cardigans, Lovelife, 311, All Mixed Up, etc.

WEDG Buffalo PD: John Hager MD: Rich Wall. Top 30 playlist including U2, Discotheque, Live, Lakin's Juice, etc.

KWOD Sacramento PD: Ron Bunce. Top 30 playlist including Garbage, #1 Crush, The Cardigans, Lovelife, etc.

XHRM San Diego MD: Brynn Capella. Top 30 playlist including The Wallflowers, One Headlight, The Smashing Pumpkins, etc.

KNRK Portland, OR PD: Mark Hamilton MD: Matt Southern. Top 30 playlist including Nine Inch Nails, Perfect Drug, Silverchair, Abuse Me, etc.

WFNX Boston PD: Bill Glasser MD: Laurie Gail. Top 30 playlist including U2, Discotheque, Live, Lakin's Juice, etc.

KZON Phoenix PD: Bill Pugh MD: Erika Smith. Top 30 playlist including Dave Matthews Band, Crash Into Me, Live, Lakin's Juice, etc.

KISF Kansas City PD: Jon Anthony MD: Jason Justice. Top 30 playlist including Garbage, #1 Crush, U2, Discotheque, etc.

WNVE Rochester PD/MD: Erick Anderson. Top 30 playlist including Stone Temple Pilots, Trappin' On A Hole, U2, Discotheque, etc.

WEND Charlotte PD: Jack Daniel MD: Kim Monroe. Top 30 playlist including Garbage, #1 Crush, Sublime, What I Got, etc.

KEDJ Phoenix PD: Shellie Hart APD/MD: Chris Patyk. Top 30 playlist including The Cardigans, Lovelife, Sublime, What I Got, etc.

KNRX Oklahoma City PD: Mike McCoy MD: Geno Pearson. Top 30 playlist including Live, Lakin's Juice, Bush, Greedy Fly, etc.

WQXA Harrisburg PD: John Moschitta MD: Scott McFadden. Top 30 playlist including Live, Lakin's Juice, U2, Discotheque, etc.

WGRD Grand Rapids PD: Allan Fee MD: Margot Smith. Top 30 playlist including Silverchair, Abuse Me, Live, Lakin's Juice, etc.

KMYZ Tulsa PD: Paul Kreigler MD: Greg Kocsack. Top 30 playlist including U2, Discotheque, Silverchair, Abuse Me, etc.

WBRU Providence PD: Tim Schiavelli MD: Matt Maloney. Top 30 playlist including The Cardigans, Lovelife, 311, All Mixed Up, etc.

WROX Norfolk PD: Perry Stone MD: Al Mitchell. Top 30 playlist including U2, Discotheque, Live, Lakin's Juice, etc.

WPBZ West Palm Beach MD: Robert English. Top 30 playlist including 311, All Mixed Up, U2, Discotheque, etc.

WDGE Providence PD: Brent Petersen MD: John Allers. Top 30 playlist including Live, Lakin's Juice, U2, Discotheque, etc.

KCXX Rivers/San Bernardino OM/MD: Dwight Arnold MD: Bruce Pulley. Top 30 playlist including The Cardigans, Lovelife, Live, Lakin's Juice, etc.

KGDE Omaha PD: Lynn Barstow. Top 30 playlist including U2, Discotheque, Live, Lakin's Juice, etc.

KEDG Las Vegas PD: John Griffin MD: Freddy Snakeskin. Top 30 playlist including U2, Discotheque, Live, Lakin's Juice, etc.



SONG ACTIVITY REPORTS



For Week Ending February 2, 1997

Detailed song tracking information for the last 3 weeks for all songs showing increased play this week. Total plays and gain do not include video play. Markets listed in order of population.

Table for BECK - 410/140. Song: The New Pollution (DGC/Geffen). Total Stations: 37. Columns: Market, Station, Airplay, IP.

Table for BIG HEAD TODD & THE MONSTERS - 435/165. Song: Resignation Superman (Revolution). Total Stations: 32. Columns: Market, Station, Airplay, IP.

Table for BUSH - 1815/155. Song: Greedy Fly (Trauma/Interscope). Total Stations: 70. Chart Move: 9-9. Columns: Market, Station, Airplay, IP.

Table for CAKE - 638/94. Song: I Will Survive (Capricorn/Mercury). Total Stations: 50. Chart Move: Debut 38. Columns: Market, Station, Airplay, IP.

Table for THE CARDIGANS - 1678/91. Song: Lovefool (Stockholm/Mercury). Total Stations: 69. Chart Move: 10-10. Columns: Market, Station, Airplay, IP.

Table for COLLECTIVE SOUL - 741/678. Song: Precious Declaration (Atlantic). Total Stations: 58. Chart Move: Debut 33. Columns: Market, Station, Airplay, IP.

Table for COUNTING CROWS - 2013/51. Song: A Long December (DGC/Geffen). Total Stations: 71. Chart Move: 5-6. Columns: Market, Station, Airplay, IP.

Table for SHERYL CROW - 1258/99. Song: Everyday Is A Winding Road (A&M). Total Stations: 66. Chart Move: 24-17. Columns: Market, Station, Airplay, IP.

Table for EELS - 446/12. Song: Rags To Rags (DreamWorks/Geffen). Total Stations: 38. Chart Move: 1-1. Columns: Market, Station, Airplay, IP.

Table for KULA SHAKER - 411/113. Song: Hey Dude (Columbia). Total Stations: 44. Chart Move: 1-1. Columns: Market, Station, Airplay, IP.

Table for LIVE - 2535/177. Song: Lakini's Juice (Radioactive/MCA). Total Stations: 78. Chart Move: 2-2. Columns: Market, Station, Airplay, IP.

Table for MARILYN MANSON - 523/34. Song: Tourniquet (Nothing/Interscope). Total Stations: 50. Chart Move: 1-1. Columns: Market, Station, Airplay, IP.

Table for MATCHBOX 20 - 407/0. Song: Long Day (Lava/Atlantic). Total Stations: 23. Chart Move: 1-1. Columns: Market, Station, Airplay, IP.

Table for DAVE MATTHEWS BAND - 1401/63. Song: Crash Into Me (RCA). Total Stations: 66. Chart Move: 16-15. Columns: Market, Station, Airplay, IP.

Table for MUNDY - 563/60. Song: To You I Bestow (Epic). Total Stations: 53. Chart Move: 1-1. Columns: Market, Station, Airplay, IP.

SONG ACTIVITY REPORTS



Detailed song tracking information for the last 5 weeks for all songs showing increases in airplay...

For Week Ending February 2, 1997

Grid of 12 charts including NINE INCH NAILS, NO DOUBT, PRODIGY, R.E.M., SILVERCHAIR, and others. Each chart shows station data, total plays, and chart movement.

Grid of 12 charts including THE SMASHING PUMPKINS, SOCIAL DISTORTION, SOUL COUGHING, SPACE, and SUBLIME. Each chart shows station data, total plays, and chart movement.

Grid of 12 charts including U2, VERUCA SALT, THE VERVE PIPE, THE WALLFLOWERS, and WILCO. Each chart shows station data, total plays, and chart movement.

POWER PLAYLISTS

KFOG San Francisco PD: Paul Marszalek MD: Bill Evans. Top 30 list including Chris Isaak, Dave Matthews Band, and Counting Crows.

WXRT Chicago VP/Programming: Norm Winer MD: Patty Martin. Top 30 list including U2, David Bowie, and Bodeans.

WBOS Boston PD: Jim Herron. Top 30 list including Counting Crows, Dave Matthews Band, and Eleanor McEvoy.

KSCA Los Angeles PD: Mike Morrison MD: Nicole Sandler. Top 30 list including Sheryl Crow, Dave Matthews Band, and Counting Crows.

KTCZ Minneapolis PD: Lauren MacLeash MD: Jane Fredericksen. Top 30 list including Jonny Lang, Widespread Panic, and The Wallflowers.

WHPT Tampa PD: Chuck Beck APD/MD: Chris Taylor. Top 30 list including The Wallflowers, Sheryl Crow, and Counting Crows.

CIDR Detroit PD: Murray Brookshaw MD: Ann Delisi. Top 30 list including Dave Matthews Band, Sheryl Crow, and Counting Crows.

KBCO Denver PD: Dave Benson MD: Scott Arbough. Top 30 list including The Wallflowers, John Mellencamp, and Dave Matthews Band.

KMTT Seattle SM: Chris Mays MD: Dean Carlson. Top 30 list including Tom Petty & The Heartbreakers, John Mellencamp, and The Wallflowers.

Main chart table with columns: THIS WEEK, LAST WEEK, WKS. ON CHART, TITLE/LABEL/PROMOTION LABEL, ARTIST, TW, LW. Includes 'ONE HEADLIGHT' by The Wallflowers as No. 1.

Advertisement for AIRPLAY Monitor CLASSIFIED. Features a photo of a person and the text 'Reach the World's Greatest Radio Minds... CONTACT: Laura Rivchun - 212-536-5058'.

YOU'VE JUST RECEIVED A PROMO CD.
HOW DO YOU KNOW IT'S A HIT?
ASK YOURSELF ONE SIMPLE QUESTION:

IS IT BY COLLECTIVE SOUL?



NO. 1 MOST ADDED AT MODERN AND MAINSTREAM
BY A MONSTROUS MARGIN!

★★★AIRPOWER★★★
DEBUT! (12) MAINSTREAM ROCK

DEBUT! (33) MODERN ROCK
DEBUT! (14) BIG PICTURE

COLLECTIVE SOUL

PRECIOUS DECLARATION

THE FIRST TRACK FROM THE FORTHCOMING ALBUM
DISCIPLINED BREAKDOWN

 THE ATLANTIC GROUP
© 1997 ATLANTIC RECORDING CORP. A TIME WARNER COMPANY

PRODUCED BY ED ROLAND
MANAGEMENT: ARTHUR SPIVAK/SPIVAK ENTERTAINMENT

World Radio History

surf atlantic: <http://www.atlantic-records.com>

