

ROCK ■ AIRPLAY Monitor

• We Listen To Radio •

February 23, 1996 \$ 4.95 Volume 3 • No. 9

ROCK HIGHLIGHTS

MAINSTREAM ROCK

#1

SMASHING PUMPKINS

1979 (VIRGIN)

★★★ AIRPOWER ★★★

RED HOT CHILI PEPPERS • *Aeroplane* (WARNER BROS.)

NEW RELEASES

AMMONIA • *Drugs* (EPIC)
CANDLEBOX • *Best Friend* (MAVERICK/WARNER BROS.)
FRANCIS DUNNERY • *The Way Things Are* (ATLANTIC)
FROM GOOD HOMES • *Head* (RCA)
GARBAGE • *Only Happy When It Rains* (ALMO SOUNDS/GEFFEN)
MR. MIRAIINGA • *Baglady* (WAY COOL MUSIC/MCA)
IGGY POP • *Heart Is Saved* (VIRGIN)
THE REFRESHMENTS • *Banditos* (MERCURY)
THERMADORE • *Amerasian* (ATLANTIC)

MODERN ROCK

#1

SMASHING PUMPKINS

1979 (VIRGIN)

★★★ AIRPOWER ★★★

NO RECORDS QUALIFIED FOR AIRPOWER THIS WEEK

NEW RELEASES

AMMONIA • *Drugs* (EPIC)
BJORK • *Hyper-Ballad* (ELEKTRA/EEG)
CANDLEBOX • *Best Friend* (MAVERICK/WARNER BROS.)
COWBOY JUNKIES • *A Common Disaster* (Geffen)
FRANCIS DUNNERY • *The Way Things Are* (ATLANTIC)
FIG DISH • *Bury Me* (ATLAS/POLYDOR)
GIRLS AGAINST BOYS • *Super-Fire* (TOUCH & GO)
IGGY POP • *Heart Is Saved* (VIRGIN)
THE REFRESHMENTS • *Banditos* (MERCURY)
SEVEN MARY THREE • *Water's Edge* (MAMMOTH/ATLANTIC)
THERMADORE • *Amerasian* (ATLANTIC)

TRIPLE A

#1

GIN BLOSSOMS

Follow You Down (A&M)

Classic Rock Boosters Say No 'Funeral For A Friend' Just Yet

by John Loscalzo

After months of highly publicized defections and dire predictions for classic rock, one of that format's pioneers has published a format manifesto contending not only that classic rock is not dying, but that the radio landscape in 1996 is similar to that in 1985-86, when classic rock first exploded.

Classic rock is reeling from the defection of such flagships as WXRK New York—despite its best book in recent memory last fall—and KLSX Los Angeles, as well as the decision by other classic rockers, such as WYSP Philadelphia and KRQR San Francisco, to evolve into mainstream rock. Given the format's longstanding bad rap in the industry (sometimes by its own programmers), the war of attrition with Arrow and other '70s gold or classic hits outlets, many industry observers feel that the format has run its course after a decade or that it will merge with "heritage" mainstream rockers into one format playing '70s, '80s, and '90s music.

Jacobs Media president Fred Jacobs, in his memo to radio, says, "There

have been people walking around with signs for 10 years proclaiming that classic rock is dead. As a result of some of the classic rock stations that have thrown in the towel in the past 12-18 months, [people have] accelerated those dire predictions."

But, Jacobs contends, "conditions today are similar to when classic rock first got going. When you think back to 1985, the emphasis was on hot hits and new music. [What made] the classic rock position so intriguing was that the music really wasn't being exposed at all. The same thing is happening now. The alternative explosion has reached markets like Madison, Wis., and Lansing, Mich., and the number of stations playing Jethro Tull and the Stones and Led Zep have dwindled to just the classic rock station or, in the case of New York City, no one. The lone classic rock station in many markets is knocking down some pretty good ratings."

Jacobs also cites the decision by Arrow outlet WARW Washington, D.C., to reimage itself as "classic rock" this month as proof "that's where the real opportunity for growth lies." He also

Continued on page 5

MODERN ROCK
Already on over 60 stations
BDS 463 detections +301

On at:

KROQ Q101
LIVE105 KNDD
WHFS KPNT
KEGE KOME
91X WHYT
89X WRZX
WIBF WDRE

and many more!!!

On over 35
Mainstream Rock
stations including:

KISS WIYY
KISW WEBN
KRZR KUPD
KBER KTUX
WZAT KTYD
KHOP KRAD
WAVF WTFX

and many more!!!

On  MUSIC TELEVISION



The afghan whigs honky s ladder

The premiere single and video from the

forthcoming new album *Black Love*.

Album in stores March 13.

Produced by Greg Dulli.

On Elektra compact discs and cassette. <http://www.elektra.com>
© 1996 Elektra Entertainment Group, a division of Warner Communications Inc. & New Warner Company.

1990 POP

naughty little doggie

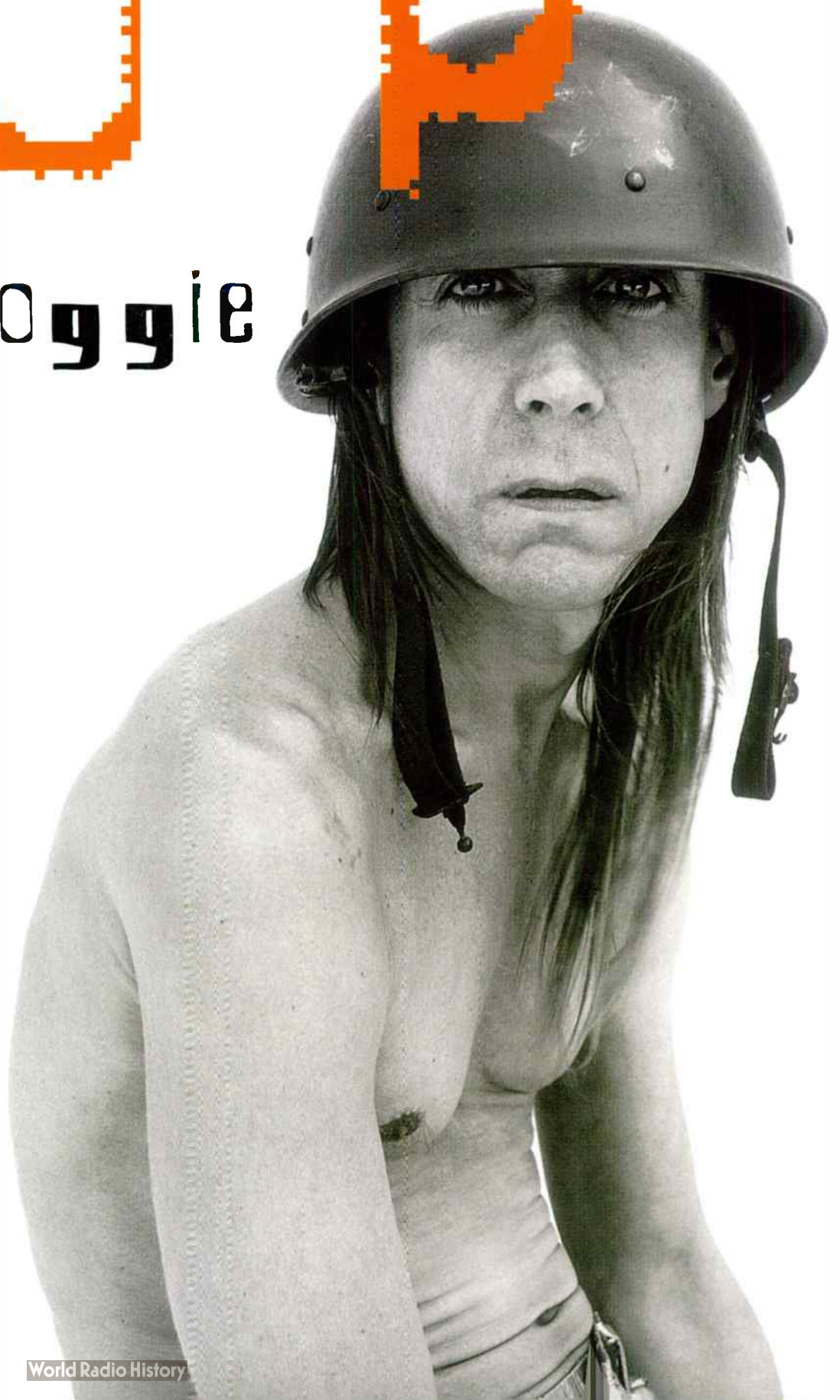
featuring

“Heart Is Saved”

EARLY ADDS:

KNNC

KACV



Produced by Thom Wilson and Iggy Pop
Art Collins Management



©1996 Virgin Records America, Inc.

RADIOACTIVE

JSN Teams With Paragon To Take Rock Adult National

Jones Satellite Networks is adding a rock alternative feed to its 24-hour formats. The company has formed a strategic alliance with Paragon Research and managing partner **Mike Henry**. He'll work with Jones in crafting a satellite feed that mirrors the adult modern format of Paragon and SBR Radio. Jones VP programming/operations **Phil Barry** hopes to have a PD and staff in place for a May sign-on. Rush T&R to 8250 South Akron St., Suite 205, Englewood, Colo. 80112.

With **KNRX (92X)** Denver under new ownership, **GM Ron Jameson** exits. Sales director **Fritz Stahmer** takes the post on an interim basis.

Former **KGON** Portland, Ore., **OM Dick Sheetz** has resurfaced as the PD of **WDIZ** Orlando, Fla., replacing **Mike Beck**.

Triple-A **WMAX** Rochester, N.Y., PD **Rick Mackenzie** exits. His duties are being handled for now by MD **Jennifer Vanderslice** and morning host **Mike Rusinko**.

Several weeks after adding a top 40/rhythm format to afternoons, **CKEY (Planet 101)** Buffalo, N.Y., completes its transition from modern to top 40.

Modern **WQXA** York, Pa., becomes the latest **Howard Stern** affiliate. Stern kicked off programming at the station Feb. 20 and has slated a press conference for Feb. 23's broadcast. His addition splits the **WQXA** morning team, **Scott Johnson** and **Michelle Cruz**. Johnson exits. Cruz slides into the p.m. drive shift, moving **Scott McFadden** into middays, and midday host **Claudine DeLorenzo** to the role of local producer for the Stern feed with the addition of some music duties.

As anticipated, classic rock **WZGC (Z93)** Atlanta has changed its morning **GreaseMan** feed from tape delayed to live. He's teamed, via satellite, with **WZGC** ND **Marcia Shipley**, who adds her Atlanta-based perspective to the **WZGC** audience and all **GreaseMan** affiliates. In other syndication news, **WLEE** Richmond, Va., picks up **John Boy** and **Billy**. The acquisition moves the **Big Brother Shane** and the morning shift out of the **Classic Hits** station. **WQZQ** Nashville will add the **Bob** and **Tom** show by month's end, coinciding with its power boost to 100,000 watts.

Chicago radio vet **Garry Meier**, last with **WLUP** Chicago, returned to his old stomping grounds at crosstown N/T **WLS-AM** Feb. 19, teamed with the station's **Roe Conn** for afternoons. Meier's contract runs for three years; his return to the station is almost 10 years to the date after he and then-partner **Steve Dahl** ended their mid-'80s reign at **WLS**.

WDRE Long Island, N.Y., picks up **KREV** Minneapolis APD/midday host **Shelley Miller** as MD/morning co-host. Meanwhile, **KREV** has given APD stripes to p.m. driver **Thorn**, and **Shawn Stewart** picks up MD duties and Miller's noon-3 p.m. slot. Stewart has been station producer for the Spin Radio Network and hosted **KREV's** Sunday night specialty show "Moonlight Meditations." The 10 a.m.-noon shift has passed from **Morgan "Jamie Gumm" Church**, who exits, to

production director/specialty show host **Christine Kass**.

In the wake of **Dave Stewart's** departure for Miami, **WARQ** Columbia, S.C. MD/afternoon drive host **Susan Groves** has been given interim PD responsibilities. **GM Steve Patterson** is accepting T&R for Stewart's morning shift.

Rick Ashton is the new ND/morning co-host at triple-A **KBCO** Denver, joining **Kerry Gray**. Ashton previously did mornings for **KBCO** PD **Mike O'Connor** at **KTEG** Albuquerque, N.M. Comedy Central addicts will recognize Ashton's name from his Short Attention Span Theater appearances. Meanwhile, **Caroline Corley** has gotten the official nod in nights.

As the station prepares to change hands from Brill Media to Ingstad, **KQWB** Fargo, N.D., undergoes several changes with **Mike Simmons** leaving MD duties to PD **Dave Howey** for the time being and promotion assistant **Kyle Christensen** being elevated to promotion director. The deal was announced Feb. 20 with Ingstad looking to take control in March.

N/T **WFXS** Chattanooga, Tenn., is evolving into a talk/rock hybrid. Mornings feature a talk show simulcast on a local cable TV station. Middays is locally originated classic rock, with more talk programming in afternoons. The station is classic rock on weekends and is phasing out syndicated talk programming at night in favor of automated classic rock 8 p.m.-5 a.m.

San Bernardino, Calif., modern rocker **KCXX** will be sharing MD/marketing director **Dwight Arnold** with its N/T AM, **KCKC**, now that he has been named OM for both stations. Arnold's first order of business at **KCXX** will be replacing night jock **Mark Mendoza**, headed to **KLOS** Los Angeles part-time.

KLPQ Little Rock, Ark., chose Valentine's Day to drop classic for simulcasting sports programming on FM sister station **KBBL** (the Ball). **KLPQ** PD **Nicole Beam** will remain. Afternoon driver **Steve Medley** exits.

Modern **WJRR** Orlando, Fla., night jock **Sideshow Dan** adds AM duties.

Album **WPLR** New Haven, Conn., taps overnighter **Glenn Dimenstein** for its vacant night slot. **WJXQ (Q106)** Lansing, Mich.'s overnight shift has been taken by **Jennifer Taylor**, most recently doing P/T work at country duopoly partner **WBHR**.

Modern **KJEE** Santa Barbara, Calif., turned to intern **Brad "the Surf Dude"** to fill its morning show opening.

Modern **WLUM** Milwaukee promotion director/morning sidekick **Brian Erwin** has exited the station, leaving **GM Steve Sinicropi** with PD and promotion seats to fill. Modern **WKOC** Norfolk, Va., taps 18-year radio vet **Jason McCrae** as production director. McCrae was most recently doing freelance voice work.

KDGE Dallas puts its promotion department to the test with its forthcoming charity event called, appropriately enough, **Charity**. It's a rave and benefit and will be plugged into the Internet. The March 2 event will benefit **Edge Children's Charities** as it celebrates the fifth anniversary of the station's Saturday night mix show. Not only will the event be broadcast live on the station 10 p.m.-4 a.m., but the **Edge World Wide Web** site will carry the audio live. The event will also include a bank of computer terminals at the club for cyberchat. **KDGE** has been "broadcasting" live on the Web for about a month. If you'd like to check them out, point your browser to <http://www.kdgc.com/kdgc>.

This week's Radioactive was compiled by Marc Schiffman.



WHATEVER BY LOSCALZO

Breaker 1-9, All You Internet Good Buddies, Watch Your Web Sites

NET GAINS: One programming guru I know thinks the Internet is the CB radio of the '90s, which is true to a certain extent. It's a trendy way to communicate, just like the CB was in its heyday; however, no one has risen to the level of **C.W. McCall** by writing an ode to it. I'm waiting for a band like **No Doubt** to seize the opportunity.

The issue of what radio stations should be doing on the Net has been beaten to a pulp in the last year. And now, with every mental patient in the world creating a personal World Wide Web page, the challenge of creating a site that's interesting and fresh is tougher than ever.

Imagine if everybody in your market had a decent FM transmitter and a really cool CD collection. That's what the Internet is like. Everyone is on an equal technical footing. Even the bells and whistles, like **RealAudio**, are accessible to the masses. A very basic version of their server is available free to Web-page designers, which puts the same tools you have in the hands of virtually anyone with a computer and a clue.

What makes you as a radio station different from **Joey the Wacky Webmaster** sitting in his basement is your expertise in communications. Knowing how to serve your listeners in a palatable, mainstream manner will, one hopes, pull you ahead of the hobbyists. Check out the Web sites of **KROQ** Los Angeles, **WMMS** and

WENZ Cleveland, and **KPIG** Monterey, Calif., for some ideas. Their sites not only inform people about the station but provide interesting links to other places on the Net.

The Internet is a good tool for radio to use, but programmers and sales weasels shouldn't get all hot and bothered about it. In order to create a respectable site, you need a staff with the time and energy to keep it current. As anyone who's been in radio for more than five minutes knows, that's not easy. And in the current climate of takeover mania, personnel are going to be stretched to the max doing their jobs and the jobs of the other 15 people who have been eliminated, thereby making the maintenance of Web pages more difficult. Not being updated is the main problem with many of the lame sites I've come across. Hitting a Web page and reading about Christmas promotions three months after the fact is not my idea of a good time.

But that shouldn't scare you from the Net. A simple E-mail address gives your listeners access to your station through the Web. Many of the programmers I've spoken to have cited E-mail as another tool to gauge listener response, in addition to request lines and bricks through the station window. It's cheap, and responding to E-mail from your end is a lot easier than maintaining a Web site. Even I have an E-mail address (loscalzo@pipeline.com).

WEASEL PATROL BY ANTHONY COLOMBO

Now, Record Folks Get A Monitor Column Too!

Welcome to the first edition of **Weasel Patrol**, **Rock Airplay Monitor's** chronicle of label personnel on the move.

Former **Maverick Records** VP **Abbey Konowitch** is now GM of **MCA**. **Jayne Simon** has resigned as **Geffen's** head of sales to accept the position of senior VP of marketing but has no official start date. Exiting are executive VP/GM **Randy Miller** and VP of sales and field marketing **Jonathan Coffino**. **RCA's** VP of national pop promotion **Skip Bishop** is expected to join **MCA** in a similar role but was not available for comment at press time.

Also in the rumor mill is the impending promotion of **Universal's Daniel Glass** from executive VP/GM to president. A **Universal** spokesman had no official comment at press time.

The **Elektra** shuffle sees **Al Tavera** upped to national director of album promotion, West Coast. The one-time **KPWR** Los Angeles MD had been

L.A. local promotion manager. **Mari Dew**, **Elektra's** Nashville local promotion manager, fills **Tavera's** shoes, leaving the **Music City** slot up for grabs.

Virgin's national director of album promotion **Scott Douglas** adds triple-A duties. . . **Island's** Boston rep **Paul Langton** moves to New York as the associate director of alternative promotion.

Atlantic names **Edie Lundeen** to the **L.A.** local promotion spot, replacing **Pamela Jouan**, who is now associate director of national promotion. **Atlantic** is also looking to fill a New York local spot with **Lynn Oakes'** recent promotion to associate director of alternative promotion.

Mercury has a local opening in Pittsburgh, as **Kathy Boyle** exits to take a sales post at that market's **WDVE/WXDX**. . . **Roadrunner Records** has a new phone number: 212-274-7500.

If you have information that you would like included in this column, the **Patrol** would love to hear from you at 212-536-5064 or fax 212-382-6094.

Every Day Is Like Sundae



WMMS Cleveland morning guys **Joe Cronauer** and **Brian Fowler** celebrate Valentine's Day by being dipped in a vat of chocolate outside **Malley's Chocolate Factory**. The pair are seen here being covered with **Reddi-Whip** and chocolate syrup by listeners.

PUBLISHER: MICHAEL ELLIS
EDITOR: SEAN ROSS
MANAGING EDITOR: JOHN LOSCALZO
DIRECTOR OF CHARTS: JERRY MCKENNA
MAINSTREAM ROCK CHART MANAGER: ANTHONY COLOMBO
MODERN ROCK CHART MANAGER: MARK MARONE
CHART PRODUCTION MANAGER: MICHAEL CUSSON
ASST. CHART PRODUCTION MANAGER: PAUL PAGE
EDITORIAL PRODUCTION MANAGER: BARRY BISHIN
ASSOC. EDITORIAL PRODUCTION MANAGER: MARCIA REPINSKI
EDITORIAL PRODUCTION: MARC GIAQUINTO, MORRIS KLEGMAN
COPY EDITOR: CARL ROSEN
ADVERTISING PRODUCTION MANAGER: LYDIA MIKULKO
ADVERTISING PRODUCTION ASST.: CINDEE WEISS
ADVERTISING ART DIRECTOR: RAY CARLSON

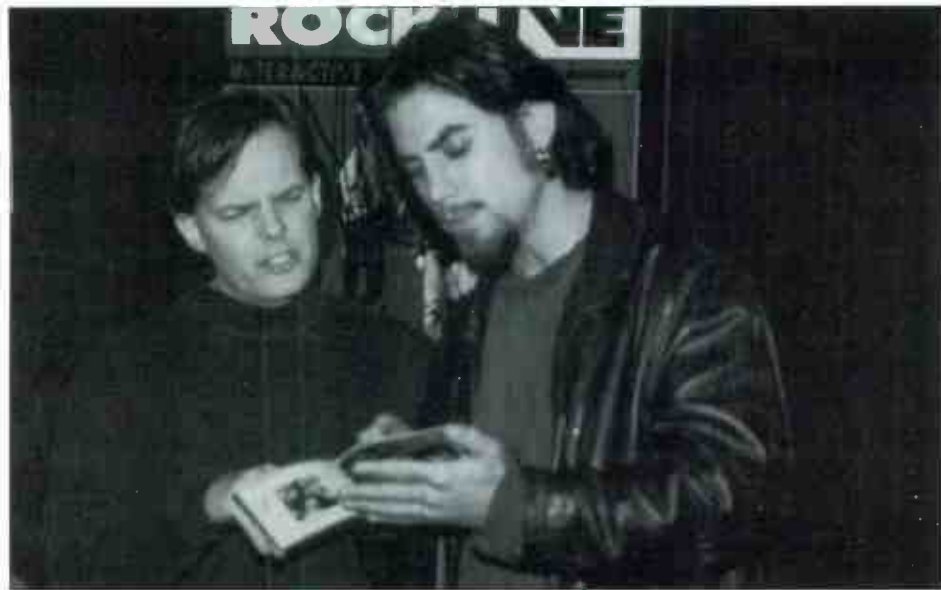
©1996 BPI Communications, 1515 Broadway, New York, NY 10036
212-536-5039 For subscriptions call: 800-722-2346

NATIONAL ADVERTISING MANAGER: JON GUYNII
ADVERTISING SALES: ART PHILLIPS
CLASSIFIED ADVERTISING: LAURA RIVCHUN
ADVERTISING SERVICES MGR.: MICHELE JACANGELLO
SALES ASSISTANTS: EVELYN ASZODI, ERICA BENGITSON,
ALEX VITOULIS, ALYSE ZIGMAN
EDITORIAL ADVISER: TIMOTHY WHITE
PRODUCTION DIRECTOR: MARIE GOMBERT
DIRECTOR OF MARKETING: ELISSA TOMASETTI
CIRCULATION MANAGER: JEANNE JAMIN

Billboard Music Group

PRESIDENT: HOWARD LANDER

Itsay Imay Aeroaneplay



"Modern Rock Live" host Tom Calderone, left, is walked through the pig Latin translation of the lyrics to the Red Hot Chili Peppers' "Aeroplane" by the band's Dave Navarro, who appeared on the show.

Screwballs Meet Fastball



Hall of Famer Nolan Ryan, center, is presented with a ceramic blue parrot by KROQ Los Angeles morning team Kevin Ryder, right, and Gene "Bean" Baxter.

Cold And Nekkid!



WNRQ (the Revolution) Pittsburgh recently asked some listeners to compete for fun and prizes in its "Bareback Bowl" football game. Pictured, from left, are WNRQ's Ed Wenck; four contestants; and WNRQ's Jude Sheets, Julie, and p.m. driver/ref Ali.



CHEET SHEET BY MARK MARONE

Gravity Kills Finds Success In Procrastination

If TVT act Gravity Kills were a football team, it would be the underdog whose backup quarterback scores the win without any game preparation.

The band's story begins with three friends attempting to place a song on a KPNT St. Louis compilation. Having had months to work on the song, but waiting until just two days before the submission deadline to find a singer, bassist/drummer Kurt Dorns asked his cousin Jeff Scheel in Dallas to fly to St. Louis to finish the song. Scheel came through. "I worked my day job on Thursday and flew up Thursday evening," he says. "I walked into the studio, and they had 'Guilty' as a piece of music, no lyrical ideas, no melodic ideas. They just said, 'Here it is.'"



Spurred by the combination of a reunion of former high school mates and all-night studio accessibility afforded them by keyboardist Doug Firley's having worked there doing jingles, Scheel delivered the performance that helped "Guilty" become KPNT's most requested song of 1995 and subsequently got the band signed to TVT last July. It's also one of two vocal tracks—"Blame" is the other—the band kept from its original demos when it went to Battery Studios in New York to record the album.

After just making the Friday 5 p.m. deadline for the compilation and being notified that their song was selected for it, the musicians decided to form a group. "We thought, 'Well, maybe we're onto something, let's talk about getting a band together.'" And just like a superstitious athlete who adheres to the same pregame rituals used on the day of a major victory, Gravity Kills agreed to "sort of continue to work the way 'Guilty' came together"—Scheel works out the vocals after the band completes the music.

The results can be found on the band's self-titled debut, which is scheduled for a March 5 release nationally, including a special midnight release at Streetside Records in St. Louis. Gravity Kills' first appearance on record after the KPNT sampler was a demo version of "Goodbye" on the platinum-certified "Mortal Combat" soundtrack. "Guilty" was released commercially last week—it also appeared on the "Seven" soundtrack—as an hourlong CD maxi-single featuring nine remixes and a bonus track. Rocky Morton, creator of "Max Headroom" and director of clips by Foo Fighters and Talking Heads, was enlisted for the video.

The band, which didn't exist two years ago, is rapidly becoming acquainted with touring life. It is currently on the road with labelmates Sister Machine Gun through April and will appear at some spring radio festivals to be announced. About the band's surprise success, Scheel says, "We feel extremely fortunate [because] that kind of stuff doesn't happen everyday, and we had absolutely no reason to believe it would happen to any of us."

Scheel concedes that the song probably has completely different meanings to each member but offers his own interpretation of "Guilty." Regardless of your background, Scheer says, "people are constantly trying to tear you down and recreate you in their own image of what you're supposed to be or how you're supposed to conduct yourself. 'Guilty' was an acknowledgement of that, but at the same time it was an acknowledgement that I do the same thing to people."

Whigs Set To Climb Ladder

Before recording tracks for their second Elektra release, "Black Love," the Afghan Whigs indulged themselves by recording two R&B covers (Barry White's "Can't Get Enough of Your Love" and Frederick Knight's "Be For Real") for the "Beautiful Girls" soundtrack. Guitarist/singer/songwriter Greg Dulli received co-executive producer credit on the album and the songs recorded were performed live in the movie as well. It also marked the first appearance of new drummer Paul Buchignani in the band.

The Whigs released three independent albums and one EP (all on Sub Pop except the first album) before signing with Elektra and releasing their major-label debut, "Gentlemen," in 1993. That album contained "Debonair," a top 20 modern rock hit in November '93. A Sam Bayer (Nirvana, Smashing Pumpkins, Hole) video has just been completed for the single. Tour plans include a European trip in March followed by a tour of the U.S. with Howlin' Maggie beginning April 8 in Columbus, Ohio. Some of the songs from the album will be performed live by a seven-piece band.



ROAD HAPPENINGS AND SUCH

Here are a couple of highly anticipated tours: Rancid will be going out with Rocket From The Crypt beginning March 15 at Jimmy's in New Orleans. From there they play Memphis; Nashville; Charlotte, N.C.; Charleston, S.C.; Raleigh, N.C.; Baltimore; Harrisburg, Pa.; the Avalon in Boston March 24-25; Asbury Park, N.J.; Roseland in New York March 28-29; Rochester, N.Y.; Pittsburgh; Columbus, Ohio; Cincinnati; Louisville, Ky.; Grand Rapids, Mich.; Chicago; Milwaukee; Minneapolis; Omaha, Neb.; St. Louis; Tulsa, Okla.; Albuquerque, N.M.; and the Palladium in Los Angeles April 17. Tickets will be \$10. Oasis started a sold-out 20-date tour, which began Feb. 23 in Kansas City, and has just completed a video for "Champagne Supernova."

The Cure has 20 tracks completed for an upcoming release, which is slated to ship to radio in mid-April. The street date for the album is May 7.

Ammonia, which is signed to Murrur in Australia, will have its debut album titled "Mint 400" released by Epic March 19.

Classic Rock Booster Says No 'Funeral For A Friend' Just Yet

Continued from page 1

compares classic rock's performance to Arrow and '70s stations in the top 50 markets, finding that classic rock averaged an adults 25-54 share of 6.2 and an average rank of sixth compared to Arrow/'70s' 4.7 share and rank of ninth.

THE EVOLUTION WILL NOT BE

As for the possibility that classic rock and heritage mainstream outlets will merge into one format, Jacobs tells Rock Airplay Monitor, "I think classic rock is its own entity. . . . The name classic rock has brand equity; [just] as oldies or country as names communicate a whole genre of music, classic rock now does the same thing.

"One of the problems that classic rock stations have had is an internal marketing problem. What happens is the ratings plateau after a while, and internally some people tire of the format. They want to know, when is this format going to evolve? The answer is it's not going to evolve. It is what it is. The way the format evolves is through nonmusic ways like [oldies KRTH Los Angeles] has evolved over the years.

"For a lot of stations, that wasn't the situation. They lost faith in the format. When the '70s and Arrow stations came on, it was just the impetus that those stations who weren't all that happy with the way things were going needed to go off and do something else.

"At stations where there has been a strong core belief in the format, like WKLI Milwaukee, KQRS Minneapolis, and WCSX Detroit, there isn't time spent talking about the death or the state of the format. All the time spent is on talking about how to make the station more interesting, exciting, and a vital part of the community. . . . When you look at the stations that have made the move from classic to something else, most of them are having difficulty in their new homes."

DALLAS REMAINS BULLISH

Tom Glade, VP/GM of classic KZPS Dallas (and modern sister KDFE), has Arrow station KRRW competing against him, but that hasn't made him less bullish on classic rock. "The issue at this point is there is more sharing than we'd like to see in the female demos that like classic rock. This is no different than an AC who gets a direct competitor. . . . You've got to hold true to the core elements of your product and defend them to the death. We have equity in a name that people really understand—classic rock. They do not understand what Arrow is.

"Classic rockers who have had troubles are the ones who violated the principles of marketing warfare. They started to shuffle too far away from the core elements that made them good classic rock stations and lost the image that their listeners had of them. The other station [that was] debuting took their audience away, and they panicked." Glade points out that when KRRW signed on, combined shares for classic rock in that market rose. And while the Arrow affected his station initially, "we're back in the top five men 25-54 as the debut and the buzz of the Arrow has worn away." KZPS moved 2.4-3.4 12-plus in the fall Arbs; KRRW moved 2.5-2.7.

Other markets, however, have seen a war of attrition that may drive one station out of the market without improving the other's numbers. In D.C., in WARW's first book competing with the now-defunct WCXR, it scored a 2 share 12-plus. In fall '95, WARW no longer had a classic rock across the street, yet it only posted a 2.1 12-plus. Jacobs blames markets, such as D.C., where total classic rock shares declined on the failure of Arrow stations to expand beyond music.

ARROW GETS MORE CLASSIC

Jacobs also notes that, over time, most Arrow stations began to sound more like their classic rock counterparts. "Many of the novelty-oriented songs that Arrow originally signed on with were all things that classic rock stations had tested over the years and had dropped because of poor performance. When Arrow debuted, hearing some of these songs for the first time in several years triggered that "oh, wow" reaction from the listener that any new station needs in order to get off the ground.

"As time went on, Arrow stations and '70s stations slowly de-popped themselves because these songs did not score well over time. Ultimately, they began to sound more like what classic rock stations had sounded like for several years."

Other format observers, such as Robert Unmacht of the M Street Journal newsletter, say that both sides of the format have evolved. Unmacht says most "pure" classic rock stations have taken a poppier lean, so that classic rock and classic hits have met in the middle. Unmacht also notes that, despite the pundits' death knells for classic rock, this year's M Street Directory shows 350 classic rock outlets, up from 264 in fall 1994.

Unmacht believes that WARW and other Arrow outlets actually finished their transition to classic rock some time ago, although WARW only recently began using the term "classic rock" with the addition of former WCXR morning man Paul Harris. PD Craig Ashwood says, "We never really were like the other Arrow stations. We've evolved into a classic rock station to the point where it was, 'Let's just call it what we are.'"

WHY D.C. CHANGED

Ashwood thinks his station probably would not have added the classic rock positioner if WCXR didn't abandon the format. "The reality is that the market changed. [WWDC-FM] made major changes in their music—they no longer play any classic rock. They've become a true modern rock station. They sound great, but they're much different than what we are, and they're now in the same sort of battle as [modern] WHFS."

"[Our] music hasn't changed." Ashwood says, despite listener perception that it has. That in part stems from WARW's revamped presentation and new morning show. WCXR's a.m. drive hosts Paul Harris and Dave "the Predictor" Murray were added at the same time as the classic rock positioner. "The fact the we have a real fun, active, classic rock-targeted morning show has created a different sense of platforming for the radio station; it makes the music sound different."

Ashwood doesn't believe all Arrow stations should make the transition to classic rock, pointing to original Arrow KCBS-FM Los Angeles. "Where it's working, it's working great," he says.

WMGK Philadelphia, which began as a '70s pop outlet, is leaning more rock these days, but won't rush into the classic rock position left vacant by WYSP; according to PD Dan Michaels. "I don't think developing into a classic rock is the answer for our station. I think the beauty of classic hits is that it doesn't limit itself. Women are less likely to listen to classic rock because of the harder edge of the stuff. We aren't as heavy into Jimi Hendrix, Pink Floyd, Led Zeppelin, and that aspect of [classic]. We are able to incorporate parts of it that were part of album rock at one time but since abandoned, like Carly Simon, Linda Ronstadt, and James Taylor. It's a broader appeal."

GUTHRIE'S TAKE

One format pioneer who isn't sure if there's room for classic rock in every market is Louisville, Ky.-based consultant Gary Guthrie. Guthrie, whose classic hits outlets of the late '80s were, in many ways, the forerunner of the Arrow format, sees classic rock, overall, as "fried. And nonexclusive. You have the oldies stations who are struggling to come into the '70s and leave the Bobby Rydells behind. You've got the album rockers who are still playing some of that stuff and be all things to all people 25-54. You've got the Arrows and '70s, who are riddled with that material."

As for Jacobs' contention that 1996 is like 1986, Guthrie says, "Album rockers just weren't playing this stuff in 1985 or were playing just a moderate amount of it. I see the album rockers of today leaning toward modern and trying to evolve, but they still haven't left the Led Zeppelins and Skynyrd and Allmans behind. They're certainly playing more than they were in 1986. There are still a lot of grandfathered stations like WDVE Pittsburgh or WFBQ Indianapolis who are straddling the fence and will continue to do so because they're straddling the fence successfully."

Sean Ross contributed to this article.

ROCK GODZ

WMRQ's John Knapp Proves There's Life Beyond Hair Bands, Gets Philly Job

After minutes of speculation last week, it was WMRQ Hartford, Conn., PD John Knapp who was chosen to fill the programming chair at modern WPLY (Y100) Philadelphia vacated by WHYT Detroit-bound Garrett Michaels. Knapp's appointment is taken as a signal by many that the onetime modern/top 40 hybrid has stepped up its commitment to modern rock. Y100 already leads the market's first modern rocker, WIBF, 3.7 to 1.3 12-plus, despite having been in a virtual dead heat with the then-WDRE Long Island, N.Y., network affiliate a year ago.

Ironically, Knapp served as former WDRE PD Russ Mottla's MD at WIYY (98 Rock) Baltimore during that station's 8-share years and the "hair band" explosion of the early '90s. So how did Knapp get from "hair" to there?

"I never looked at WIYY as a hair-band station. We played hit records. They were songs

was a big help in focusing me on the important things on how to win in Hartford."

While WPLY is still considered almost a top 40 station by many in the modern rock community, WMRQ has also been a hit-driven station for much of its tenure. Here's a sample 4 p.m. hour of Hartford station: Matthew Sweet, "Sick Of Myself"; Collective Soul, "The World I Know"; Toadies, "Possum Kingdom"; Pearl Jam, "Dissident"; Natalie Merchant, "Wonder"; Goo Goo Dolls, "Name"; Elastica, "Connection"; R.E.M., "Losing My Religion"; Gin Blossoms, "Follow You Down"; Nirvana, "Smells Like Teen Spirit"; Stone Temple Pilots, "Interstate Love Song"; Spacehog, "In the Meantime"; Spin Doctors, "Two Princes"; No Doubt, "Just A Girl."

In his farewell book at WMRQ, Knapp was up 5.3-5.6 12-plus in the fall '95 Arbitrons and No. 1 18-34 with an 11.9 share. Knapp says, "The thing I'm most proud about is the fact that we tied 12-plus with one of the heritage top 40s in the market, WTIC-FM. 12-plus is the glamour number. I'm more impressed by what we did 18-34 because that was our game plan; our attack strategy was to own that cell. . . . It's almost like running for office when you roll out a new station."

Part of that "campaign" includes being active promotionally. "You start off with quarterly events like our Big Day Off, Big Night Out, Jingle Bell Jam, [various] shows we brought into the market, [and the] Shred fest this winter. We're also going to own a ski slope for a weekend. We were very much plugged into what people in Hartford like to do. There aren't many sports teams [here], and the few that are here are very important like [University of Connecticut] basketball and the [NHU] Whalers. We've come up with promotions around those teams. Also, we try to be as much as possible into time spent listening promotions, as long as they sound fun on the air."

Knapp was one of the PDs chosen for the panel on dealing with your sales department at the recent Gavin Seminar, held Feb. 8-10 in Atlanta. Since that panel ended abruptly after a half-hour, what else did Knapp have to say about programming/sales relationships in modern?

"The key is you have to have someone who understands the qualitative sell, not just the numbers sell that's involved with this format. When it's done right you can be a major player 18-34, but more importantly you're going to bring a client a group of people that are going to spend money, haven't figured out product preference, and can be sold. That's the perfect kind of person [clients] want—[one] who can be a repeat customer."

"One of the things that this format has to offer is that you have an active young consumer who isn't set in his buying patterns yet. The whole goal of advertising, besides creating brand preference, is to drive traffic. I think one of the greatest things about this format is that we're plugged into a group of people who don't go home at night and necessarily watch TV; they still go out and buy records and shop for clothes, spending a much higher amount of their disposable income than someone who's 30."

Looking ahead to Y100, Knapp says, "My immediate goals are to get to know my staff. I'm inheriting an incredible group of people. If you talk to anyone in Philadelphia, the first thing you hear is what great people [are there] like Dan Lerner and Lynn Bond Bruder. [APD] Chuck Tisa is going to be a very big part of my programming team, along with [consultants] Scott [Shannon] and Mike [Preston]. The next few weeks are going to be as much of a learning process for me as it is for anybody, but it's going to be a great time."

JOHN LOSCALZO



John Knapp
Program Director
WPLY (Y100) Philadelphia

After the novelty of playing the music goes by, you've got to do other things to be a great station'

that were valid, especially in blue-collar markets like Baltimore, Cleveland, and Pittsburgh. We were basically a top 40 station that played rock music. We had high-energy sweepers. Before everybody was talking about John Frost, we had John Reilly, who's now at WBCN Boston, who was doing phenomenal work. We poked fun at ourselves, we played hit records, we sounded like we were at every show, and we were on top of everything. It was good radio.

"In a lot of ways, that's what you've got to do at alternative to make it stand. After the novelty of playing the music goes by, after you've got the position, you've got to do other things to be a great station. Like having a good morning show and being well-positioned in the market."

WMRQ's morning team, Jake and Beth, are, Knapp says, "not a yuck-yuck morning show, but there's interaction and there's personality involved. It's worked, and we play a lot of music in the morning."

At Y100, Knapp will have one of Philly's longest-running morning shows leading his team, "Barsky In The Morning." "It's going to be a little different in that everyone knows how good that morning show is in Philly." Will it be a challenge to manage such a well-known entity? Knapp says, "You have special situations when you're dealing with a bigger morning show, but for the most part I want to reassure people that I'm going to be there in terms of guidance and making sure I'm available to give them the tools that they need."

Knapp joined WMRQ shortly after Robert Benjamin, PD of sister station WHFS Washington, D.C., helped sign it on in January 1995. "Robert rolled out the original version of the station without jocks, just production and the tunes. When I got here, we did an auditorium test and fine-tuned it. Robert was there as more of a sounding board for advice if I wanted it, and he would only interact if I asked a question. It was a great dialog between two program directors. He

HELP WANTED

SERVICES

POSITION WANTED

BULLETIN BOARD



Q102 - Philadelphia's #1 CHR radio station is looking for the BEST MORNING SHOW IN AMERICA!
If you know how to entertain ... If you know how to relate to 18-34 women ... If you know how to use Federal Express ... Send Tape and Resume TODAY to: Dave Allan, Operations Manager, Q102, 2 Bala Plaza, Bala Cynwyd, PA 19004

PROGRAM DIRECTOR
Columbus, Georgia's country giant, KIX 106 is looking for an on-air program director. Minimum 3 years country experience required. Tape, resume and cover letter to:
BERNIE BARKER, GENERAL MANAGER
WSTH
1236 BROADWAY, COLUMBUS, GA 31901

COMEDY

TeleJoke!
by Alan Ray
Topical One Liners faxed or e-mailed daily!
Now in 250 markets!
(209) 476-1511 phone (209) 476-1211 fax
web site: <http://www.telejoke.com>
Call or fax for a free sample!

The budget ax has swung. Major market reporter/anchor needs a new home.
Call DAVE:
(517) 892-6348

DALE C. - Sorry you couldn't pay the RENT in Atlanta. I'm here for you whenever you need help. Eddie

GLENN - Are you going to WKTU? R.C.

S.B. - It was great, but a little too short. When do we get to see this encore ...G, T, & D

IZZY - or isn't he?

Q95.5 Seeks A Marketing/Promotions Manager

Candidates must be highly motivated, possess the ability to visualize then execute exciting promotions for an adult, female audience, generate business for our advertisers, and build brand awareness of the Motor City's HOT AC radio station.
Send resume and examples of your work to:
Tom O'Brien, WKQI
15401 W. Ten Mile Road
Oak Park, Michigan 48237
AN EVERGREEN MEDIA CORPORATION STATION, WKQI IS AN EQUAL OPPORTUNITY EMPLOYER.

DIRECTOR OF PROMOTION

KS95-FM a Twin Cities Adult Contemporary Station is looking for a Promotions/Marketing person. Ability to deal with the public; 4 years previous major market experience in promotion and marketing; knowledge of FCC rules and regulations as they pertain to contests; familiarity with programming concepts; applicant must be highly organized and able to prioritize own work; an understanding of television buying would be helpful. Please call Bob Davis at 612-642-4141 and submit resumes to:
AMY J. STEDMAN
KSTP-FM
Job #192-95
3415 UNIVERSITY AVE.
ST. PAUL, MN 55114
AN EQUAL OPPORTUNITY EMPLOYER

POSITION WANTED

25 year vet, last 10 ... KPLM, earlier Los Angeles, Boston, San Diego, needs Palm Springs gig today!
Ford Michaels:
(619) 329-6982

Vampire hours sought by experienced radio announcer. Overnights/weekend. So. Cal only. Major market exp.
JEFF: (818) 445-0664

HARDWORKING RADIO veteran looking for "not just a job, but an adventure". Experienced in all phases of the business. Seeking a programming challenge. Give me a call.
ROGER: (423) 235-6889



Download Billboard Online software and user guide from our promotional web site. Contact us for your ID and password at a one time charge of only \$29.
On the web at:
<http://www.billboard-online.com>

SOUTH FLORIDA
Accomplished NYC-based ad space sales pro with extensive music industry, advertising and media planning experience seeks radio sales position in Fort Lauderdale or Miami.
P.O. Box 1941, NYC 10185

Currently employed top 10 alt. guy seeking top 30 alt. gig. I am the scene. Affordable. Mobile. Undercover.
BG (817) 545-3018

CALL LAURA RIVCHUN for Airplay Monitor Classifieds
Ph (212) 536-5058 • Fax (212) 536-5055

or call for more information
1-800-449-1402/212-536-1402
1515 Broadway NY, NY 10036

Ferocious female rocker seeks Southern AOR. Currently playing tunes my parents probably made out to.
JOANIE: (904) 278-0972

SERVICES

VOICEOVERS

Uniquely Human Liners & Promos
MORE THAN WORDS
MTW PRODUCTIONS
414-652-4707

15-year pro. Great pipes. Good attitude. Versatile. Seeks on-air gig in Sacramento area.
JOHN: (916) 488-1347

CLASSIFIED ADVERTISING RATES

HELP WANTED:
1 WEEK \$75.00 per inch
2 WEEKS \$65.00 per inch
POSITION WANTED AND BULLETIN BOARD:
\$45.00 per inch
BOX NUMBER: Add \$20.00
SERVICES:
1 WEEK \$75.00 per inch
6 WEEKS \$65.00 per inch
13 WEEKS \$60.00 per inch
26 WEEKS \$55.00 per inch
51 WEEKS \$50.00 per inch
DEADLINE (ALL CLASSIFIED):
Each Wednesday 3pm EST, 9 day leadtime.
• Classified ads are non-commissionable •
SUBMIT ALL AD COPY TO:
Laura Rivchun
Airplay Monitor Classified
1515 Broadway
New York, NY 10036
Phone: 212-536-5058
Fax: 212-536-5055



TOP RATED CHR LOOKING FOR MORNING SHOW HOST ... CREATIVE TEAM PLAYER WITH A SENSE OF HUMOR. SLACKERS NEED NOT APPLY. SEND T&R TO:
MICHAEL NEWMAN, PD
55 PLAZA CIRCLE
SALINAS, CA 93901
NO CALLS PLEASE

SHOW PREP

BRAD MESSER'S
PREP
Radio's Favorite Daily
Show Prep Sheet
CALL NOW • 24-hours
Sample 1 800 788-PREP

Scott Brunner, KKRD Wichita mornings/digital production/WZOU Boston. 15-year total exp. Accept all calls;
(316) 684-2207

Currently employed 20-year vet seeks PD/OM position. Format implementation, promotion, production. Mid-West/East.
Call: JOHN (314) 365-2478

DATABASE COORDINATOR/DIRECTORIES NASHVILLE, TN.

Part time person to coordinate the inputting of data for Billboard Directories. Work in Billboard's Nashville office. Knowledge of music industry & computers necessary. Detailed phone work & followup. No calls please.
Resume to: Box RW-1
Billboard • 1515 Broadway
New York, NY 10036
EOE

AIRPLAY **Monitor** Broadcast Data Systems

GREATEST GAINERS

Strongest Increase In Airplay This Week

MAINSTREAM ROCK INCREASE IN PLAYS

PEARL JAM • Leaving Here (EPIC)	+281
WAXQ +22, WAAF +22, KICT +21, WWDC +19, KIOZ +17, KISW +15, WRXL +14, WKDF +14, WHCN +14, WIYY +14	
BUSH • Machinehead (TRAUMA/INTERSCOPE)	+196
KHOP +27, WARQ +16, KTUX +16, WDIZ +16, WZAT +15, KILO +13, KBPI +11, WXTB +9, WNOR +9, KCAL +7	
GIN BLOSSOMS • Follow You Down (A&M)	+167
KTUX +18, WRXR +14, WHJY +14, WBLM +10, WKLC +10, WZZR +9, WEZX +8, KZRR +8, WRDU +8, WNCN +7	
THE BEATLES • Real Love (APPLE/CAPITOL)	+151
KDKB +29, WFBQ +18, WBLM +17, KTAL +13, WHCN +11, KMOD +8, KTYD +7, WBAB +7, KRZZ +6, WKLC +6	
FOO FIGHTERS • Big Me (ROSWELL/CAPITOL)	+150
WAVF +24, KZRR +23, WXRA +14, WARQ +12, WAXQ +11, KUFO +11, KCAL +11, KSJO +11, WEZX +9, WKLO +9	
THE PRESIDENTS OF THE UNITED STATES OF AMERICA • Peaches (COLUMBIA)	+144
KILO +20, KZRR +17, WWDC +14, KBPI +13, KFRQ +11, KRZR +10, WKLO +10, KNCN +8, WAAF +8, WHJY +7	
GOO GOO DOLLS • Naked (METAL BLADE/WARNER BROS.)	+142
KNCN +13, WAXQ +9, WLVQ +9, WARQ +8, KIOZ +8, KYYS +8, WXRA +7, WRXR +7, KTAL +7, KATT +6	
ZZ TOP • She's Just Killing Me (EPIC SOUNDTRAX/EPIC)	+140
KTXQ +21, WRDU +16, WHCN +14, WKLS +14, WTPA +12, KRXQ +9, KYYS +8, KEZO +7, KISW +7, WCCC +6	
ALANIS MORISSETTE • Ironic (MAVERICK/REPRISE)	+126
WIOT +18, KTYD +13, KMJX +10, WSTZ +9, WXRA +9, WPHY +9, KICT +7, WIXV +6, WNCN +6, WVRK +6	
RUST • Not Today (ATLANTIC)	+119
WDIZ +20, KICT +14, WZTA +9, KBPI +9, WRIF +9, WIXV +8, WZAT +7, WTPA +6, KCAL +6, WCKW +5	

MODERN ROCK INCREASE IN PLAYS

PEARL JAM • Leaving Here (EPIC)	+345
WRXQ +28, KTEG +25, KEDJ +25, WEND +23, WGRD +22, KWOD +20, WRLG +18, KTOZ +14, WPLA +13, KNCC +13	
THE AFGHAN WHIGS • Honky's Ladder (SUB POP/ELEKTRA/EEG)	+217
KRRK +23, WROX +16, WPBZ +12, WBRU +12, KNND +11, WZRH +11, WFNX +10, WRXQ +9, KPNT +9, WQXA +9	
JARS OF CLAY • Flood (ESSENTIAL/SILVERTONE)	+196
KKND +22, WQXA +19, KISF +19, KTCL +19, WXNU +15, XHRM +15, KBBT +13, WRXQ +12, WRLG +11, KNDD +11	
SMASHING PUMPKINS • Zero (VIRGIN)	+185
KEDG +32, KBBT +20, WRLG +16, WJRR +14, KNRK +12, KEDJ +12, WZRH +12, WMMS +11, WPBZ +10, KRRK +10	
OASIS • Champagne Supernova (EPIC)	+159
KRRK +23, WOWW +21, WEND +18, WKOC +13, KNND +13, WMRQ +12, CIMX +12, KDGE +11, KTbz +9, WXRK +7	
LOVE AND ROCKETS • Sweet Lover Hangover (BEGGARS BANQUET/AMERICAN/REPRISE)	+156
KXRX +19, WROX +17, WKOC +14, WBRU +12, WZRH +11, XHRM +9, KWOD +8, KITS +7, WPLA +5, KFRR +5	
BUSH • Machinehead (TRAUMA/INTERSCOPE)	+153
WPBZ +21, WQXA +20, WJRR +17, KMYZ +16, KEDG +13, KXRX +10, KITS +8, WXDX +7, KGDE +7, WEND +6	
BAD RELIGION • A Walk (ATLANTIC)	+135
WROX +17, WKQX +16, KNRK +15, WGRD +15, WPLA +14, WZRH +11, WFNX +11, KBBT +9, WMRQ +8, WXDX +5	
RUBY • Tiny Meat (CREATION/WORK)	+106
WBCN +16, KWOD +10, WVGO +9, WCYV +7, WRLG +7, KNDD +7, WJRR +7, KNRK +6, KPNT +6, WAQZ +6	
FOO FIGHTERS • Big Me (ROSWELL/CAPITOL)	+103
KBBT +22, WPBZ +12, WZRH +12, WMMS +12, WJRR +11, KDGE +10, WKQX +10, KTCL +10, WBCN +10, KEDJ +	

VIDEO PLAYLISTS

MOST PLAYED ROCK TRACKS

	TW	LW
1 Melissa Etheridge, I Want To Come Over	32	33
2 Joan Osborne, One Of Us	30	36
3 Hootie & The Blowfish, Time	28	33
4 Seal, Don't Cry	21	23
5 Collective Soul, The World I Know	21	16
6 Blues Traveler, Hook	18	21
7 Natalie Merchant, Carnival	18	22
8 Natalie Merchant, Wonder	18	25
9 Deep Blue Something, Breakfast At Tiffan	17	19
10 Blues Traveler, Run Around	12	8
11 Son Volt, Drown	11	10
12 Gin Blossoms, Follow You Down	10	8
13 Soul Asylum, Promises Broken	10	9
14 Alanis Morissette, Hand In My Pocket	9	8
15 Oasis, Wonderwall	9	11
16 R.E.M., Losing My Religion	8	4
17 Melissa Etheridge, I'm The Only One	8	3
18 Alanis Morissette, Ironic	8	3
19 Peter Gabriel, Sledgehammer	7	2
20 Counting Crows, Mr. Jones	7	2
21 Everything But The Girl, Missing	7	15
22 Tom Petty & The Heartbreakers, Don't Com	6	2
23 John Mellencamp, Wild Night	6	4
24 Seal, Kiss From A Rose	6	7
25 Chris Isaak, Graduation Day	6	0
26 Hootie & The Blowfish, Let Her Cry	5	5
27 Hootie & The Blowfish, Only Wanna Be Wit	5	5
28 The Rembrandts, I'll Be There For You	5	4
29 Collective Soul, December	5	6
30 U2, Mysterious Ways	5	0

	TW	LW
1 Bush, Glycerine	26	30
2 Smashing Pumpkins, 1979	26	30
3 Foo Fighters, Big Me	24	20
4 Oasis, Wonderwall	24	31
5 Alanis Morissette, Ironic	22	23
6 Collective Soul, The World I Know	21	21
7 Green Day, Brain Stew	21	29
8 Presidents Of The United State, Peaches	19	27
9 Seven Mary Three, Cumbersome	18	20
10 Blues Traveler, Hook	17	19
11 Goo Goo Dolls, Naked	17	20
12 Red Hot Chili Peppers, Aeroplane	16	6
13 Pete Droge, Beautiful Girl	13	11
14 White Zombie, Super-Charger Heaven	12	9
15 Everclear, Santa Monica	12	16
16 Dog's Eye View, Everything Falls Apart	12	10
17 No Doubt, Just A Girl	11	15
18 Alice In Chains, Heaven Beside You	11	13
19 Seal, Don't Cry	10	11
20 Spacehog, In The Meantime	10	10
21 Melissa Etheridge, I Want To Come Over	9	9
22 Gin Blossoms, Follow You Down	8	9
23 Smashing Pumpkins, Bullet With Butterfly	7	10
24 Radiohead, High And Dry	7	10
25 Dave Matthews Band, Satellite	6	12
26 For Squirrels, Mighty K.C.	6	9
27 Nirvana, Come As You Are	5	3
28 Soul Asylum, Promises Broken	5	4
29 Ruby, Tiny Meat	5	3
30 Red Hot Chili Peppers, Give It Away	4	5
31 Red Hot Chili Peppers, Under The Bridge	4	4
32 Aerosmith, Crazy	4	2
33 Korn, Shoots And Ladders	4	5
34 Silverchair, Tomorrow	4	2
35 Alanis Morissette, You Oughta Know	4	3
36 Goo Goo Dolls, Name	4	0
37 Son Volt, Drown	4	3
38 AC/DC, Cover You In Oil	4	2
39 Pearl Jam, Jeremy	3	1
40 Aerosmith, Cryin'	3	1

TRIPLE A INCREASE IN PLAYS

THE BEATLES • Real Love (APPLE/CAPITOL)	+92
WRLT +18, KXPT +16, WTTS +12, KSCA +12, WNCN +10, KFMG +6, KFOG +6, WXLE +4, KMTT +3, KBCO +2	
COWBOY JUNKIES • A Common Disaster (Geffen)	+69
WXRC +14, KXPT +12, KTCZ +12, KBCO +8, KFOG +7, KMTT +6, KSCA +6, WRNR +6, WNCN +3, WTTS +2	
JARS OF CLAY • Flood (ESSENTIAL/SILVERTONE)	+60
WHPT +14, KFMG +10, WRLT +7, WXLE +7, WNEW +7, WTTS +5, KOPT +4, WXRC +4, KXPT +3, KSCA +3	
STING • Let Your Soul Be Your Pilot (A&M)	+40
CIDR +8, WNCN +8, WHPT +6, WRLT +5, WVRV +5, WXRC +5, KTMN +3, KTCZ +3, KXPT +2, KMTT +1	
DOG'S EYE VIEW • Everything Falls Apart (COLUMBIA)	+37
WXRC +13, KTMN +7, KSCA +6, WXLE +5, WTTS +4, WXRT +4, KBCO +3, KPIG +2, KFOG +2, CIDR +1	
ERIC MATTHEWS • Fanfare (SUB POP)	+31
KOPT +9, WNEW +9, WRLT +3, WNCN +3, WXRT +3, KMTT +2, KZON +1, WRNR +1	
PETE DROGE • Beautiful Girl (ELEKTRA/EEG)	+28
KTCZ +8, KSCA +5, WNCN +5, KFOG +5, KTMN +4, WRLT +4, WXLE +2, KFMG +1	
OASIS • Wonderwall (EPIC)	+28
WXRC +14, WHPT +13, CIDR +3, WRLT +3, KMTT +3, KTMN +2, WVRV +2, WTTS +1, WRNR +1, WXRT +1	
TORI AMOS • Caught A Lite Sneeze (ATLANTIC)	+26
WXLE +16, CIDR +6, KFOG +5, KXPT +3, KTCZ +3, KMTT +1, WTTS +1, WRNR +1, WXRT +1, WNEW +1	
MICHAEL MCDERMOTT • Summer Days (EMI)	+25
KSCA +6, WNCN +6, CIDR +3, KFMG +3, KFOG +2, WXRT +2, KPIG +1, KXPT +1, KMTT +1, WXRC +1	

"GUILTY"
JUST CONVICTED:

WXRK	KNRK	WQXA
WBCN	WQBK	KEGE
KEDG	WRXQ	WNVE
WENZ	WQGE	WEDG
WEND	WEQX	

TOP PHONES:
WPLA, KDGE, KNCC, WIBF, KXRX, KLZN, KGDE, WRLE, KDJK, WXSX, KMYZ

ALSO SERVING TIME:

KITS 15X	KNDD 14X	KEDJ 23X
WPLA 31X	KNCC 23X	KDGE 31X
KTbz 12X	WRLG 22X	KXRX 27X
KBBT 20X	KFRR 18X	KGDE 33X

EARLY MAINSTREAM ROCK BELIEVERS:
WRXQ, WLRZ, WRIF, WZTA, WDRK, WTGE

Debut **(38)** Monitor Modern Rock Chart
(38) - (32) ON R&R

MOST ADDED THREE WEEKS IN A ROW R&R
On Tour Now With **SISTER MACHINE GUN**
Going For Monitor Mainstream Rock Adds Now

CONTACT JOHN PERRONE OR GARY JAY AT TVT 212-979-6410
TVT RECORDS, 23 EAST 4TH STREET, NEW YORK
NY 10003 TEL 212-979-6410 FAX 212-979-6489



POWER PLAYLISTS

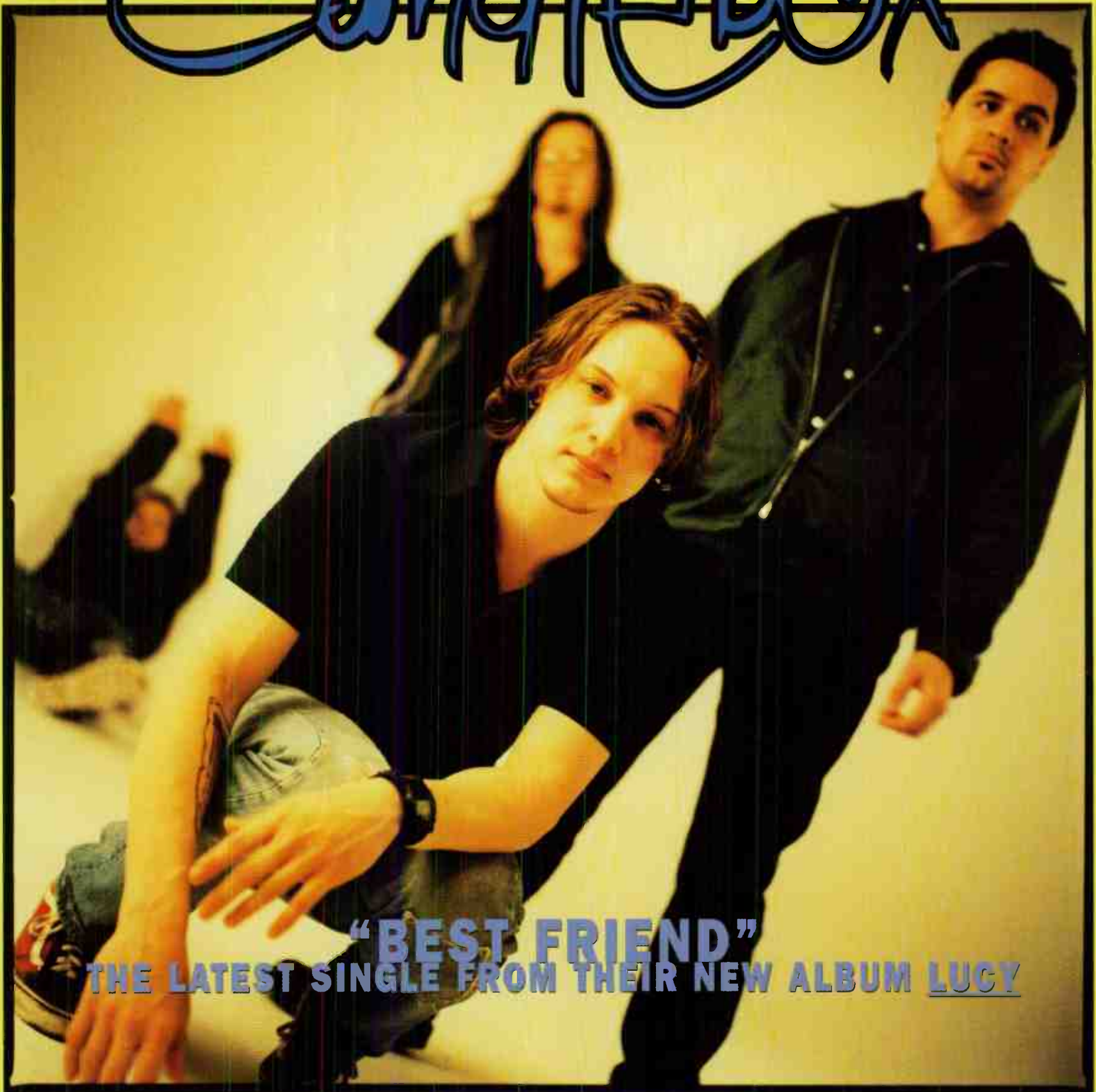
For Week Ending February 18, 1996



Playlists supplied by Broadcast Data Systems. Radio Track service. Stations selected from panel of leading broadcasters in 125 radio markets, electronically monitored 24 hours a day, 7 days a week. Songs ranked by number of plays in monitored week.

Grid of 48 radio station playlists (KLOS, WAXQ, WRCX, WMMR, KQRS, WWDC, WFBQ, WRIF, WAAF, WDVE, WKLS, KEGL, KLLO, KTXQ, KSHE, KSJO, WEBN, WZTA, WHJY, WXTB, WIYY, WLZR, WBAB, KUFO) with columns for station name, PD, MD, and song titles with play counts.

Candlebox



"BEST FRIEND"
THE LATEST SINGLE FROM THEIR NEW ALBUM LUCY

ON TOUR:

2/22	Greenville, NC	3/2	Nashville, TN
2/23	Charlotte, NC	3/3	Memphis, TN
2/26	Washington, DC	3/5	Knoxville, TN
2/27	Newark, DE	3/6	Louisville, KY
2/28	Charlottesville, VA	3/8	Saginaw, MI
3/1	Murray, KY	3/9	Muskegon, MI

PRODUCED BY KELLY GRAY AND CANDLEBOX • CO-PRODUCED BY JON PLUM • MANAGEMENT: LINDY GOETZ FOR LGM



World Radio History



★ ★ ★ **AIRPOWER** ★ ★ ★

(Minimum 800 detections for the first time)

Total Plays/Gain

RED HOT CHILI PEPPERS 876/93

Aeroplane (Warner Bros.)

Total Stations: 61/Chart Move: 18-16

Heavy (21+ plays): 14 KFRQ, KICT, KIOZ, KNCN, KRZR, KTUX, KTXQ, KZRR, WAAF, WARQ, WAVF, WMMR, WPLR, WXRA

Medium (14-20): 8 KCAL, KEGL, KTYD, WDIZ, WIYY, WRXC, WZAT, WZTA

Light (Under 14): 39

New Airplay This Week: 8 KATT, KQRC, KXUS, WHJY, WKLS, WPYX, WROV, WXTB

AIRPOWER BOUND

Total Plays/Gain

DOG'S EYE VIEW 743/80

Everything Falls Apart (Columbia)

Total Stations: 64/Chart Move: 24-18

Heavy (21+ plays): 5 KBER, KLPX, KTXQ, WARQ, WZAT

Medium (14-20): 17 KEGL, KICT, KLBJ, KRXQ, KTUX, KTYD, KZRR, WBAB, WEBN, WIOT, WIYY, WJST, WKLO, WPLR, WRXK, WTPA, WWDC

Light (Under 14): 42

New Airplay This Week: 7 KFRQ, KHOP, KISS, KXUS, WCKW, WFXF, WZZR

STABBING WESTWARD 730/65

What Do I Have To Do? (Columbia)

Total Stations: 58/Chart Move: 23-19

Heavy (21+): 10 KBER, KEGL, KRZR, KTUX, KTXQ, KUPD, WKDF, WKLO, WXTB, WZTA

Medium (14-20): 14 KBPI, KICT, KILO, KIOZ, KISS, KISW, KLOS, WARQ, WEBN, WJST, WLZR, WRXC, WTPA, WZTA

Light (Under 14): 34

New Airplay This Week: 4 KLAQ, KMOD, WAAF, WCKW

FOLK IMPLOSION 709/15

Natural One (London/Island)

Total Stations: 43/Chart Move: 22-20

Heavy (21+): 14 KBPI, KICT, KILO, KISS, KTUX, KZRR, WAAF, WARQ, WAXQ, WJST, WKLO, WTPA, WXTB, WZTA

Medium (14-20): 9 KATT, KEGL, KTXQ, KTYD, WDIZ, WIYY, WQFM, WVRK, WZAT

Light (Under 14): 20

New Airplay This Week: 3 KSJO, WFYV, WROV

MELISSA ETHERIDGE 678/67

I Want To Come Over (Island)

Total Stations: 46/Chart Move: 27-22

Heavy (21+): 8 KFRQ, KTYD, WCCC, WKLC, WKLS, WMMR, WROV, WRXR

Medium (14-20): 19 KEZO, KLPX, KMJX, KXUS, KYYS, WAPL, WAQX, WARQ, WBAB, WBLM, WEGR, WHJY, WIOT, WIZN, WPLR, WPYX, WRXK, WSTZ, WZZR

Light (Under 14): 19

New Airplay This Week: 1 WXRA

SON VOLT 670/79

Drown (Warner Bros.)

Total Stations: 58/Chart Move: 28-23

Heavy (21+): 4 KICT, KTYD, WKDF, WZAT

Medium (14-20): 15 KEGL, KILO, KISW, KLBJ, KLPX, KTXQ, KZRR, WARQ, WBAB, WCMF, WIXV, WIYY, WRXK, WXTB, WZZR

Light (Under 14): 39

New Airplay This Week: 7 KEGL, KILO, WAXQ, WIOT, WXTB, WZTA, WZZR

TOADIES 670/54

Away (Interscope)

Total Stations: 56/Chart Move: 26-24

Heavy (21+): 6 KEGL, KSJO, KTUX, KTXQ, WJST, WZAT

Medium (14-20): 13 KBER, KBPI, KILO, KISW, KUPD, WARQ, WAXQ, WIYY, WKDF, WLZR, WRXC, WXTB, WZTA

Light (Under 14): 37

New Airplay This Week: 3 WIYY, WNCN, WVRK

BUSH 651/196

Machinehead (Trauma/Interscope)

Total Stations: 47/Chart Move: 34-25

Heavy (21+): 12 KEGL, KHOP, KILO, KISW, KLOS, KSJO, WAAF, WAXQ, WJST, WRXC, WRIF, WXTB

Medium (14-20): 10 KBPI, KIOZ, KRZR, KTUX, WARQ, WDIZ, WIYY, WLZR, WZAT, WZTA

Light (Under 14): 25

New Airplay This Week: 7 KATT, KCAL, KHOP, KTUX, WARQ, WNOR, WZAT

DON HENLEY 624/103

You Don't Know Me At All (Geffen)

Total Stations: 45/Chart Move: 31-27

Heavy (21+): 10 KEZO, KFRQ, KGGO, KHOP, KYYS, WCMF, WIMZ, WKLS, WPLR, WRXK

Medium (14-20): 12 KLAQ, KQRS, KTAL, KTYD, WAQX, WEZX, WFBQ, WIOT, WKLC, WROV, WRXR, WSTZ

Light (Under 14): 23

New Airplay This Week: 7 KOMP, WBLM, WQVE, WHCN, WIOT, WIXV, WPYX

BOB SEGER & THE SILVER BULLET BAND 619/65

Hands In The Air (Capitol)

Total Stations: 45/Chart Move: 30-29

Heavy (21+): 8 KFRQ, KGGO, WIMZ, WIOT, WKLC, WPLR, WRIF, WRXR

Medium (14-20): 14 KDKB, KLPX, KMJX, KTAL, XXUS, WAPL, WAQX, WEGR, WEZX, WHCN, WHJY, WRXK, WSTZ, WZZR

Light (Under 14): 23

New Airplay This Week: 1 WKLS

THE PRESIDENTS OF THE UNITED STATES 561/144

Peaches (Columbia)

Total Stations: 48/Chart Move: 36-30

Heavy (21+): 6 KEGL, KICT, KRZR, KTUX, WARQ, WAXQ

Medium (14-20): 10 KILO, KISS, KLOS, KRZR, WAVF, WJST, WKDF, WWDC, WXRA, WZAT

Light (Under 14): 32

New Airplay This Week: 13 KBPI, KCAL, KFRQ, KILO, KNCN, KZRR, WAAF, WCKW, WHJY, WIXV, WKLO, WPYX, WSTZ

BROTHER CANE 548/28

Voice Of Eujena (Virgin)

Total Stations: 54/Chart Move: 32-32

Heavy (21+): 3 KXUS, WIMZ, WZAT

Medium (14-20): 6 KICT, KMJX, WFYV, WIOT, WNOR, WZZR

Light (Under 14): 45

New Airplay This Week: 4 KLLO, WEGR, WEZX, WRDU

FOO FIGHTERS 546/150

Big Me (Roswell/Capitol)

Total Stations: 48/Chart Move: Debut 33

Heavy (21+): 5 KICT, KZRR, WAVF, WKDF, WZAT

Medium (14-20): 14 KATT, KRAB, KRZR, KTXQ, WDVE, WEZX, WIYY, WQFM, WRXL, WTPA, WTUE, WWDC, WXRA, WZTA

Light (Under 14): 29

New Airplay This Week: 11 KCAL, KSJO, KUFO, KZRR, WARQ, WAVF, WDIZ, WIXV, WIZN, WKLO, WXRA

RUST 461/119

Not Today (Atlantic)

Total Stations: 45/Chart Move: Debut 35

Heavy (21+): 4 WAAF, WAVF, WZAT, WZTA

Medium (14-20): 11 KATT, KBPI, KEGL, KICT, KILO, KQRC, KRXQ, KTUX, WARQ, WDIZ, WJST

Light (Under 14): 30

New Airplay This Week: 9 KCAL, KICT, WDIZ, WIXV, WRXC, WRIF, WSTZ, WTPA, WVRK

ALANIS MORISSETTE 458/126

Ironic (Maverick/Reprise)

Total Stations: 34/Chart Move: Debut 36

Heavy (21+): 9 KICT, KRAB, KTAL, KZRR, WARQ, WVRK, WWDC, WXRA, WZAT

Medium (14-20): 5 KISS, WAPL, WIOT, WIXV, WIYY

MOST NEW AIRPLAY THIS WEEK

No. Of Stations

PEARL JAM <i>Leaving Here (Epic)</i>	16
THE PRESIDENTS OF THE UNITED STATES <i>Peaches (Columbia)</i>	13
FOO FIGHTERS <i>Big Me (Roswell/Capitol)</i>	11
THE BEATLES <i>Real Love (Apple/Capitol)</i>	9
RUST <i>Not Today (Atlantic)</i>	9

Light (Under 14): 20
New Airplay This Week: 7 KMJX, KMOD, KTYD, WIOT, WNCN, WPYX, WSTZ

SEVEN MARY THREE 435/63

Water's Edge (Mammoth/Antalantic)

Total Stations: 38/Chart Move: Debut 37

Heavy (21+): 4 KILO, KUPD, WJST, WXTB

Medium (14-20): 11 KBER, KEGL, KIOZ, KRXQ, KRZR, KTUX, WDIZ, WEBN, WLZR, WZAT, WZTA

Light (Under 14): 23

New Airplay This Week: 3 KTUX, WRXC, WZAT

CHART BOUND

Total Plays/Gain

SILVERCHAIR 356/78

Israel's Son (Epic)

Total Stations: 34

Heavy (21+): 2 KTXQ, WAAF

Medium (14-20): 8 KBER, KBPI, KILO, KRZR, KTUX, WKLO, WXTB, WZAT

Light (Under 14): 24

New Airplay This Week: 6 KTUX, KTYD, WEBN, WIYY, WTPA, WZAT

★ PEARL JAM 340/281

Leaving Here (Epic)

Total Stations: 37

Heavy (21+): 4 KICT, WAAF, WAXQ, WWDC

Medium (14-20): 8 KIOZ, KISW, KSJO, WHCN, WIYY, WKDF, WLZR, WRXL

Light (Under 14): 25

New Airplay This Week: 16 KDKB, KICT, KIOZ, KISW, KQRC, KRXQ, KTYD, WAAF, WHCN, WIXV, WIYY, WKDF, WKLO, WRIF, WRXL, WWDC

RANCID 323/48

Ruby Soho (Epitaph)

Total Stations: 31

Heavy (21+): 3 KICT, KRAB, WAVF

Medium (14-20): 5 KBPI, KRZR, WRXC, WWDC, WZTA

Light (Under 14): 23

New Airplay This Week: 3 WHJY, WKDF, WRXC

COLLECTIVE SOUL 321/46

Where The River Flows (Atlantic)

Total Stations: 25

Heavy (21+): 4 KISW, WJST, WLZR, WTUE

Medium (14-20): 8 KGGO, KILO, KIOZ, KRXQ, WIYY, WKLO, WRIF, WTPA

Light (Under 14): 13

New Airplay This Week: 1 WEZX

SMASHING PUMPKINS 305/78

Zero (Virgin)

Total Stations: 32

Heavy (21+): 1 WAXQ

Medium (14-20): 10 KBPI, KIOZ, KQRC, KRAB, KRXQ, KSJO, KUFO, WAAF, WJST, WRXC

Light (Under 14): 21

New Airplay This Week: 4 KICT, KLOS, WIYY, WXTB

Light (Under 14): 15

JACKSON BROWNE 253/12

Some Bridges (Elektra/EEG)

Total Stations: 28

Heavy (21+): 1 KYYS

Medium (14-20): 5 KDKB, KMJX, KQRS, KTYD, WBAB

Light (Under 14): 22

New Airplay This Week: 3 WEZX, WIXV, WSTZ

HOG 244/107

Get A Job (DGC/Geffen)

Total Stations: 29

Heavy (21+): 2 WAAF, WZAT

Medium (14-20): 6 KEGL, KIOZ, KISS, KQRC, KUPD, WXRA

Light (Under 14): 21

New Airplay This Week: 7 KEGL, KISS, KRXQ, KUPD, WRIF, WTUE, WXRA

AC/DC 238/75

Ballbreaker (EastWest/EEG)

Total Stations: 24

Heavy (21+): 4 KEGL, KHOP, WKLO, WRIF

Medium (14-20): 4 KIOZ, KSJO, WDIZ, WXTB

Light (Under 14): 16

New Airplay This Week: 4 KHOP, KIOZ, KRXQ, KRZZ

DISHWALLA 214/79

Counting Blue Cars (A&M)

Total Stations: 23

Heavy (21+): 2 KILO, KZRR

Medium (14-20): 5 KBER, KLOS, KTUX, WAPL, WIYY

Light (Under 14): 16

New Airplay This Week: 5 KSHE, WIYY, WKDF, WRXC, WSTZ

BLUES TRAVELER 198/5

The Mountains Win Again (A&M)

Total Stations: 18

Heavy (21+): 2 WKLS, WZAT

Medium (14-20): 3 KRZR, KTXQ, WZAT

Light (Under 14): 11

New Airplay This Week: 2 WSTZ, WTUE

TOM PETTY & THE HEARTBREAKERS 186/15

You Get Me High (MCA)

Total Stations: 14

Heavy (21+): 3 KHOP, KRZR, KTUX

Medium (14-20): 1 WIXV

Light (Under 14): 10

New Airplay This Week: 2 KLAQ, WRXR

LIMBLIFTER 184/31

Screwed It Up (Mercury)

Total Stations: 26

Heavy (21+): 1 WAVF

Medium (14-20): 3 KRZR, KTXQ, WZAT

Light (Under 14): 22

New Airplay This Week: 3 KISW, KQRC, KRZZ

SCHTUM 183/25

Skydiver (Work)

Total Stations: 19

Heavy (21+): 1 WZAT

Medium (14-20): 3 KEGL, WAAF, WARQ

Light (Under 14): 15

New Airplay This Week:



SONG ACTIVITY REPORTS

For Week Ending February 18, 1996

MMI Broadcast Data Systems logo and detailed song tracking information for the last 3 weeks for all songs showing increase in play this week.

Main table containing song activity reports for Alice In Chains, Bush, Dog's Eye View, Melissa Etheridge, and Everclear. Each section includes station names, chart moves, and play counts.

Table containing song activity reports for Folk Implosion, Gin Blossoms, Go Go Dolls, Green Day, and Don Henley. Each section includes station names, chart moves, and play counts.



SONG ACTIVITY REPORTS



For Week Ending February 18, 1996

Detailed song tracking information for the last 3 weeks for all songs showing increased play this week. Total plays and gain do not include video plays. Markets listed in order of population.

Table with 8 columns: Artist/Label, Total Plays/Gain, Chart Move, and 12 city-specific columns (e.g., New York, L.A., Chicago, etc.) for albums like THE NIXONS, OASIS, RED HOT CHILI PEPPERS, BOB SEGER & THE SILVER BULLET BAND, and SMASHING PUMPKINS.

Table with 8 columns: Artist/Label, Total Plays/Gain, Chart Move, and 12 city-specific columns for albums like SON VOLT, SPACEHOG, STABBING WESTWARD, TOADIES, and ZZ TOP.

POWER PLAYLISTS

For Week Ending February 18, 1996



Playlists supplied by Broadcast Data Systems Radio... Stations selected from panel of leading broadcasters in 125 radio markets...

Grid of 24 radio station playlists including WXRK, KROQ, WKQX, WPLY, WBCN, WHFS, KITS, KDGE, WNNX, WMMS, WHYT, KEGE, KOMA, KNDD, KTZZ, CIMX, KPNT, XTRA, WJRR, WMRQ, WSHE, WDRE, WENZ, and KXPX. Each station listing includes song titles, artist names, and a 'TW LW' (Total Weeks / Last Week) column.

Seaweed

the latest from **Spanaway**

friends with weed

NEW: **ALREADY ON:**

WJSE **KRZR** **WZAT**
KJEE **WTFX** **KOZE**
KQWB **WBXQ** **WRRV**
WHMH **KCLB**
KWBR

ON TOUR NOW:

Fri, 2/23 **Charlotte, NC**
Mon, 2/26 **Washington, DC**
Tues, 2/27 **Newark, DE**
Wed, 2/28 **Charlottesville, VA**
Fri, 3/1 **Murray, KY**
Sat, 3/2 **Nashville, TN**
Sun, 3/3 **Memphis, TN**
Sat, 3/16 **Austin, TX**

are friends indeed



made in tacoma
 ©1990 Hollywood Records

<http://www.hollywoodrec.com/seaweed>



MODERN ROCK

POWER PLAYLISTS

AIRPLAY **Monitor**

For Week Ending
 February 18, 1996

Playlists supplied by Broadcast Data Systems Radio Track service. Stations selected from panel of leading broadcasters in 125 radio markets electronically monitored 24 hours a day, 7 days a week. Songs ranked by number of plays in monitored week.

KWOD
 Sacramento PD/MD: Alex Cosper

	TW	LW
1 Alanis Morissette, Ironic	29	35
2 Garbage, Only Happy When It Rains	28	18
3 Alice In Chains, Heaven Beside You	27	32
4 Oasis, Wonderwall	27	39
5 Gin Blossoms, Follow You Down	27	36
6 Red Hot Chili Peppers, Aeroplane	27	36
7 Cowboy Junkies, A Common Disaster	26	26
8 Love And Rockets, Sweet Lover Hangover	25	17
9 Pearl Jam, Leaving Here	25	5
10 Ruby, Tiny Meat	25	15
11 Presidents Of The United States, Peaches	25	27
12 Spacehog, In The Meantime	25	40
13 Seven Mary Three, Water's Edge	23	23
14 Radiohead, High And Dry	23	24
15 Rancid, Ruby Soho	23	17
16 For Squirrels, Mighty K.C.	23	29
17 Ministry, Lay Lady Lay	22	23
18 Smashing Pumpkins, 1979	22	19
19 Tracy Chapman, Give Me One Reason	22	17
20 Goo Goo Dolls, Naked	22	15
21 Tori Amos, Caught A Life Sneeze	21	22
22 Everclear, Santa Monica	20	21
23 Foo Fighters, Big Me	20	22
24 Seven Mary Three, Cumbersome	20	26
25 7 Seconds, See You Tomorrow	19	24
26 Dave Matthews Band, Satellite	19	15
27 Presidents Of The United States, Kity	19	13
28 Showjerk, Urwind	16	15
29 Bush, Glycerine	16	11
30 3 Lb. Thrill, Dana	16	7

WRZX
 Indianapolis PD: Scott Jameson MD: Michael Young

	TW	LW
1 Alice In Chains, Heaven Beside You	33	34
2 Pearl Jam, I Got It	33	34
3 Smashing Pumpkins, 1979	33	35
4 Foo Fighters, Big Me	32	34
5 Alanis Morissette, Ironic	32	36
6 Folk Implosion, Natural One	32	33
7 Red Hot Chili Peppers, Aeroplane	32	27
8 Collective Soul, The World I Know	32	32
9 Goo Goo Dolls, Naked	31	35
10 Seven Mary Three, Cumbersome	30	32
11 Oasis, Wonderwall	29	30
12 Toadies, Possum Kingdom	22	22
13 No Doubt, Just A Girl	22	19
14 Presidents Of The United States, Peaches	22	22
15 3 Lb. Thrill, Dana	21	22
16 Menthol, Stress Is Best	21	14
17 Spacehog, In The Meantime	21	24
18 Frank Black, Men In Black	20	23
19 Silverchair, Tomorrow	19	19
20 Offspring, Kick Start When He's Down	19	17
21 Bush, Little Things	19	18
22 Blues Traveler, Hook	19	19
23 Bush, Glycerine	18	21
24 Toadies, Possum Kingdom	18	15
25 Everclear, Santa Monica	18	20
26 Green Day, Brain Stew	18	18
27 Green Day, Jaded	18	19
28 Mad Season, River Of Deceit	17	17
29 White Zombie, More Human Than Human	16	18
30 Everclear, Heartspark Collarsign	16	22

WFNX
 Boston PD: Troy Smith MD: Laurie Gail

	TW	LW
1 Salt, Bluster	34	34
2 Dmobar, Stars	32	32
3 Ruby, Tiny Meat	31	27
4 Lush, Lady Killers	30	31
5 Presidents Of The United States, Peaches	30	32
6 Schtump, Skydiver	30	32
7 Foo Fighters, Floaty	29	32
8 No Doubt, Just A Girl	27	18
9 Ministry, Lay Lady Lay	26	25
10 Smashing Pumpkins, Tonight, Tonight	24	16
11 Green Day, Armatage Shanks	22	26
12 Oasis, Don't Look Back In Anger	17	18
13 Tori Amos, Caught A Life Sneeze	16	13
14 Eric Matthews, Fanfare	16	15
15 Mercury Rev, Young Man's Stride	16	23
16 Frank Black, Men In Black	16	17
17 Stabbing Westward, What Do I Have To Do?	16	21
18 Oasis, Champagne Supernova	15	17
19 Bad Religion, A Walk	15	18
20 Chameleon Brothers, Leave Home	13	11
21 Fuzzy, Girl Don't Tell Me	12	4
22 Cast, Sandstorm	12	10
23 Mick Harvey, Harley Davidson	12	12
24 Palara, Source Of Light	12	8
25 Radiohead, High And Dry	10	9
26 The Afghan Whigs, Honey's Ladder	10	8
27 Gin Blossoms, Follow You Down	10	15
28 Sparsucars, Marle	10	9
29 Alice In Chains, Heaven Beside You	10	11
30 James, Laid	9	2

XHRM
 San Diego OM: Bryan Jones PD: Kelli Cluque

	TW	LW
1 Oasis, Wonderwall	36	23
2 Folk Implosion, Natural One	35	25
3 Alanis Morissette, Ironic	35	25
4 Radiohead, High And Dry	33	22
5 Red Hot Chili Peppers, Aeroplane	33	25
6 Jewel, You Were Meant For Me	33	25
7 Collective Soul, The World I Know	32	25
8 Dave Matthews Band, Satellite	31	23
9 Gin Blossoms, Follow You Down	19	14
10 Aimee Mann, Choke In The Water	18	15
11 Everclear, Santa Monica	18	15
12 Paip, Common People	17	10
13 Spacehog, In The Meantime	17	9
14 Lenny Kravitz, Can't Get You Off My Mind	17	12
15 The Daisies, Sunday Drivers	17	13
16 Bush, Glycerine	16	10
17 Toad The Wet Sprocket, Brother	16	13
18 Love And Rockets, Sweet Lover Hangover	16	7
19 Foo Fighters, Big Me	16	12
20 Zen Cowboys, Counter Culture	15	10
21 Dog's Eye View, Everything Falls Apart	15	11
22 Jars Of Clay, Flood	15	0
23 Tori Amos, Caught A Life Sneeze	15	12
24 Son Volt, Drown	14	0
25 311, All Mixed Up	13	9
26 Cowboy Junkies, A Common Disaster	12	0
27 Smashing Pumpkins, 1979	12	19
28 Joan Osborne, Ladder	11	13
29 Sting, Let Your Soul Be Your Pilot	10	3
30 Del Amitri, Tell Her This	9	5

WLUM
 Milwaukee Acting PD: Tommy Wild MD: Zerrin Bulut

	TW	LW
1 Folk Implosion, Natural One	39	35
2 Collective Soul, The World I Know	38	36
3 Smashing Pumpkins, 1979	38	35
4 Tori Amos, Caught A Life Sneeze	37	23
5 Alanis Morissette, Ironic	36	38
6 Dave Matthews Band, Satellite	36	38
7 Gin Blossoms, Follow You Down	35	25
8 Bush, Glycerine	33	7
9 Chris Isaak, Go Walking Down There	26	25
10 Red Hot Chili Peppers, Aeroplane	25	19
11 Garbage, Only Happy When It Rains	25	22
12 Goo Goo Dolls, Naked	24	25
13 Foo Fighters, Big Me	24	27
14 Radiohead, High And Dry	23	26
15 Dog's Eye View, Everything Falls Apart	22	18
16 Tracy Chapman, Give Me One Reason	21	7
17 Natalie Merchant, Jealousy	19	3
18 Spacehog, In The Meantime	17	16
19 Presidents Of The United States, Peaches	13	16
20 Woodridge Brothers, Star Of Desire	12	7
21 The Wixons, Sister	12	6
22 Ruby, Tiny Meat	12	0
23 Oasis, Wonderwall	11	37
24 Spoon, Moby	11	0
25 Blues Traveler, Run Around	11	4
26 Smashing Pumpkins, Tonight, Tonight	11	12
27 Joan Osborne, One Of Us	10	24
28 Live, Lightning Crashes	9	6
29 Pearl Jam, Better Man	9	6
30 Jennifer Trynin, Better Than Nothing	9	5

WXDX
 Pittsburgh PD: Cris Winter MD: Steve Frankenberg

	TW	LW
1 The Wixons, Sister	27	23
2 Foo Fighters, Big Me	27	22
3 Bush, Glycerine	27	24
4 Live, Ins	26	22
5 Everclear, Santa Monica	26	25
6 Oasis, Wonderwall	26	29
7 Spacehog, In The Meantime	26	21
8 Goo Goo Dolls, Naked	25	22
9 Rancid, Ruby Soho	25	23
10 Pearl Jam, I Got It	25	23
11 Silverchair, Pure Massacre	25	20
12 Son Volt, Drown	25	25
13 Brother Cane, And Fools Shine On	24	23
14 Seven Mary Three, Cumbersome	24	22
15 Showjerk, Urwind	24	19
16 Alice In Chains, Heaven Beside You	24	24
17 Red Hot Chili Peppers, Aeroplane	23	15
18 Seven Mary Three, Water's Edge	23	19
19 Presidents Of The United States, Peaches	23	25
20 Bush, Machinhead	22	15
21 Green Day, Brain Stew	22	26
22 Toadies, Possum Kingdom	22	20
23 Smashing Pumpkins, 1979	22	20
24 For Squirrels, Mighty K.C.	20	24
25 Green Day, Jaded	20	26
26 Smashing Pumpkins, Tonight, Tonight	20	19
27 Stabbing Westward, What Do I Have To Do?	20	21
28 Goo Goo Dolls, Flat Top	19	22
29 CIV, Can't Wait One Minute More	17	16
30 Collective Soul, Smashing Young Man	15	18

KNRK
 Portland, OR PD: Mark Hamilton MD: Matt Souther

	TW	LW
1 Alanis Morissette, Ironic	40	40
2 Green Day, Brain Stew	40	37
3 Everclear, Heartspark Dollarsign	40	37
4 No Doubt, Just A Girl	39	36
5 Alice In Chains, Heaven Beside You	37	39
6 Foo Fighters, Big Me	36	32
7 Smashing Pumpkins, 1979	34	31
8 Tori Amos, Caught A Life Sneeze	32	29
9 Green Day, Jaded	32	44
10 Gin Blossoms, Follow You Down	29	24
11 Oasis, Champagne Supernova	25	23
12 Son Volt, Drown	24	20
13 Rast, Not Today	23	15
14 Pete Dinklage, Beautiful Girl	22	13
15 Salt, Bluster	22	21
16 The Refreshments, Banditos	22	18
17 Presidents Of The United States, Peaches	22	22
18 Garbage, Only Happy When It Rains	21	29
19 Toadies, Away	20	18
20 Chris Isaak, Go Walking Down There	18	17
21 Schtum, Skydiver	17	7
22 Toadies, Possum Kingdom	16	21
23 Folk Implosion, Natural One	16	18
24 Bush, Comedown	15	15
25 Weezer, Say It Ain't So	15	16
26 Bad Religion, A Walk	15	0
27 Stabbing Westward, What Do I Have To Do?	15	20
28 Silverchair, Tomorrow	14	15
29 Goo Goo Dolls, Name	14	11
30 3 Lb. Thrill, Dana	14	23

KISF
 Kansas City PD: Jon Anthony MD: Jason Justice

	TW	LW
1 Alice In Chains, Heaven Beside You	45	43
2 Everclear, Santa Monica	44	43
3 Natalie Merchant, Wonder	44	42
4 Smashing Pumpkins, 1979	42	43
5 Oasis, Wonderwall	38	24
6 Hootie & The Blowfish, I Go Blind	35	15
7 Folk Implosion, Natural One	34	22
8 Gin Blossoms, Follow You Down	33	44
9 Foo Fighters, Big Me	30	27
10 Toad The Wet Sprocket, Brother	29	40
11 Son Volt, Drown	29	29
12 Spacehog, In The Meantime	29	30
13 Alanis Morissette, Ironic	29	28
14 The Bottle Rockets, I'll Be Comin' Around	29	26
15 Green Day, Brain Stew	28	29
16 Wanderlust, I Walked	28	28
17 Pearl Jam, I Got It	26	44
18 Red Hot Chili Peppers, Aeroplane	24	24
19 Bush, Glycerine	24	23
20 Seven Mary Three, Cumbersome	22	26
21 Collective Soul, The World I Know	21	20
22 Jars Of Clay, Flood	20	1
23 Garbage, Only Happy When It Rains	19	16
24 Presidents Of The United States, Peaches	19	17
25 Red Hot Chili Peppers, My Friends	18	23
26 Tori Amos, Caught A Life Sneeze	18	19
27 The Wixons, Sister	17	14
28 Toadies, Away	16	17
29 Red Hot Chili Peppers, My Friends	16	28
30 Goo Goo Dolls, Naked	16	20

WEDG
 Buffalo PD: Vince Richards MD: Rich Wall

	TW	LW
1 Oasis, Wonderwall	38	37
2 Smashing Pumpkins, 1979	37	37
3 Green Day, Brain Stew	37	36
4 Folk Implosion, Natural One	36	36
5 Collective Soul, The World I Know	36	36
6 Everclear, Santa Monica	35	35
7 Goo Goo Dolls, Naked	35	33
8 Alice In Chains, Heaven Beside You	34	36
9 Pearl Jam, I Got It	34	28
10 Spacehog, In The Meantime	22	13
11 Seven Mary Three, Cumbersome	19	19
12 Moist, Push	18	17
13 Marry Me Jane, Twenty One	17	16
14 Bush, Machinhead	17	11
15 God Lives Underwater, All Wrong	17	14
16 Stabbing Westward, What Do I Have To Do?	17	14
17 Letters To Cleo, Here & Now	17	15
18 Pearl Jam, Leaving Here	16	12
19 Bush, Comedown	15	14
20 The Stone Roses, Love Spreads	15	14
21 Ruby, Tiny Meat	15	16
22 Red Hot Chili Peppers, Aeroplane	15	10
23 Eddy's Cellies, A Girl Like You	15	14
24 Natalie Merchant, Wonder	14	35
25 Alanis Morissette, All I Really Want	14	12
26 Smashing Pumpkins, Bullet With Butterfly	14	12
27 Menthol, Stress Is Best	14	14
28 Bush, Glycerine	14	14
29 Rancid, Ruby Soho	14	13
30 Dog's Eye View, Everything Falls Apart	14	11

KEDJ
 Phoenix PD: John Clay MD: Christopher "The Minister"

	TW	LW
1 Toadies, Possum Kingdom	45	46
2 Smashing Pumpkins, 1979	44	47
3 Green Day, Brain Stew	44	47
4 Smashing Pumpkins, Bullet With Butterfly	44	42
5 Green Day, Jaded	43	45
6 Seven Mary Three, Cumbersome	36	42
7 Bush, Comedown	36	42
8 Folk Implosion, Natural One	35	22
9 Alanis Morissette, Ironic	34	48
10 Bush, Glycerine	33	44
11 Oasis, Wonderwall	25	0
12 Everclear, Santa Monica	27	27
13 Presidents Of The United States, Lump	28	25
14 Alanis Morissette, All I Really Want	28	17
15 Live, All Over You	27	25
16 Smashing Pumpkins, Zero	25	13
17 Silverchair, Tomorrow	25	25
18 Pearl Jam, Leaving Here	25	27
19 Spacehog, In The Meantime	25	27
20 Ruby, Tiny Meat	24	26
21 Goo Goo Dolls, Name	24	24
22 Stabbing Westward, What Do I Have To Do?	23	21
23 No Doubt, Just A Girl	21	27
24 Collective Soul, The World I Know	21	19
25 Gravy Kills, Guffy	21	3
26 Pearl Jam, I Got It	21	24
27 Alanis Morissette, You Oughta Know	20	19
28 3 Lb. Thrill, Dana	20	0
29 Rancid, Ruby Soho	19	24
30 Oasis, Champagne Supernova	19	21

WNVE
 Rochester PD/MD: Erick Anderson

	TW	LW
1 Toadies, Possum Kingdom	34	26
2 Oasis, Wonderwall	33	26
3 Spacehog, In The Meantime	32	24
4 Everclear, Santa Monica	32	26
5 Collective Soul, The World I Know	31	29
6 Alanis Morissette, Ironic	31	28
7 Seven Mary Three, Cumbersome	31	25
8 Goo Goo Dolls, Name	31	26
9 Bush, Glycerine	31	27
10 Presidents Of The United States, Peaches	30	18

POWER PLAYLISTS

AIRPLAY Monitor

For Week Ending February 18, 1996

Playlists compiled by **WROX**, **WBRU**, **WEND**, **WKOC**, **KMYZ**, **KXRK**, **KEDG**, **WAQZ**, **WPBZ**, **WWCD**, **WQXA**, **KGDE**.
 Tracks selected from panel of leading broadcasters in 123 radio markets, electronically monitored 24 hours a day, 7 days a week. Songs ranked by number of plays in monitored week.

WROX
Norfolk PD: Perry Stone MD: Al Mitchell

	TW	LW
1	38	31
2	37	35
3	36	35
4	34	34
5	33	37
6	33	31
7	32	35
8	30	33
9	27	24
10	27	23
11	25	22
12	24	18
13	24	15
14	23	17
15	23	23
16	22	20
17	19	23
18	19	17
19	18	18
20	18	23
21	18	15
22	18	22
23	17	1
24	17	20
25	17	0
26	17	0
27	17	0
28	16	19
29	16	11
30	15	15

WBRU
Providence PD: Alexa Tobin MD: Stephanie Hindley

	TW	LW
1	37	33
2	35	33
3	34	33
4	33	33
5	32	30
6	32	29
7	32	33
8	31	32
9	31	34
10	30	28
11	30	32
12	27	25
13	25	21
14	24	20
15	24	23
16	23	21
17	23	20
18	22	24
19	22	24
20	21	21
21	21	21
22	21	22
23	20	18
24	20	26
25	19	23
26	19	14
27	18	18
28	17	20
29	16	14
30	15	15

WEND
Charlotte PD: Jack Daniel MD: Kim Monroe

	TW	LW
1	44	38
2	44	38
3	44	37
4	44	43
5	44	36
6	44	41
7	26	24
8	26	24
9	28	23
10	26	0
11	26	26
12	27	23
13	26	26
14	26	25
15	25	25
16	25	23
17	25	24
18	25	23
19	24	24
20	24	19
21	24	36
22	24	26
23	23	0
24	23	24
25	22	22
26	22	18
27	17	15
28	17	13
29	15	13
30	15	13

WKOC
Norfolk PD: Mark Bradley MD: Dal Hunter

	TW	LW
1	31	21
2	28	28
3	28	22
4	28	19
5	24	24
6	24	29
7	19	6
8	19	20
9	19	11
10	19	6
11	18	24
12	18	17
13	18	17
14	18	18
15	15	2
16	15	2
17	14	0
18	14	10
19	14	12
20	14	18
21	14	14
22	12	17
23	12	11
24	12	9
25	12	8
26	9	9
27	9	9
28	8	5
29	8	5
30	8	3

KMYZ
Tulsa PD: Paul Kreigler MD: Greg Kocsack

	TW	LW
1	26	26
2	36	37
3	36	36
4	35	35
5	35	35
6	35	35
7	34	35
8	34	34
9	33	35
10	28	26
11	27	26
12	25	24
13	25	16
14	25	25
15	25	23
16	24	23
17	23	23
18	23	24
19	22	22
20	22	14
21	21	17
22	21	14
23	21	5
24	17	18
25	17	15
26	14	11
27	13	16
28	13	11
29	13	13
30	12	10

KXRK
Salt Lake City PD: Mike Summers MD: Sean Ziebarth

	TW	LW
1	29	16
2	28	27
3	28	27
4	28	24
5	28	23
6	27	22
7	27	32
8	27	23
9	26	28
10	25	25
11	25	20
12	25	26
13	25	24
14	25	27
15	25	28
16	25	27
17	24	27
18	23	20
19	23	21
20	23	12
21	22	9
22	22	4
23	22	5
24	22	3
25	22	23
26	20	18
27	19	16
28	19	18
29	18	18
30	17	14

KEDG
Las Vegas PD: John Griffin MD: Freddy Snareskin

	TW	LW
1	51	51
2	46	44
3	43	35
4	41	47
5	34	50
6	32	0
7	31	21
8	28	38
9	26	26
10	25	30
11	25	23
12	23	32
13	21	27
14	21	18
15	20	41
16	20	28
17	19	7
18	18	16
19	17	26
20	17	0
21	17	0
22	17	0
23	13	0
24	12	6
25	12	33
26	12	9
27	11	8
28	11	13
29	10	13
30	10	3

WAQZ
Cincinnati PD/MD: Matt Harris APD: Sterling Schiessler

	TW	LW
1	41	41
2	40	40
3	37	37
4	38	38
5	38	42
6	38	33
7	38	42
8	37	37
9	36	34
10	34	34
11	32	32
12	27	28
13	26	22
14	26	22
15	22	28
16	22	24
17	22	22
18	20	19
19	20	21
20	20	20
21	20	19
22	20	15
23	20	15
24	20	23
25	19	17
26	19	22
27	19	19
28	18	17
29	17	17
30	15	14

WPBZ
West Palm Beach PD: Amy Doyle MD: Robert English

	TW	LW
1	35	38
2	34	37
3	34	34
4	33	34
5	33	30
6	32	33
7	32	31
8	32	36
9	31	30
10	31	28
11	30	25
12	30	28
13	30	29
14	30	28
15	29	35
16	29	31
17	28	30
18	28	3
19	27	15
20	27	27
21	27	27
22	27	20
23	27	18
24	27	22
25	27	12
26	27	18
27	27	13
28	27	12
29	27	13
30	27	14

WWCD
Columbus PD: Jane Purcell MD: Andy Davis

	TW	LW
1	23	23
2	23	23
3	22	23
4	22	23
5	22	13
6	19	16
7	18	23
8	18	16
9	18	16
10	17	14
11	16	15
12	16	22
13	16	14
14	16	17
15	16	17
16	16	15
17	14	14
18	14	13
19	13	11
20	13	15
21	12	9
22	11	18
23	11	17
24	11	18
25	10	10
26	9	9
27	9	9
28	9	8
29	8	11
30	8	8

WQXA
Harrisburg PD: John Moschitta MD: Scott McFadden

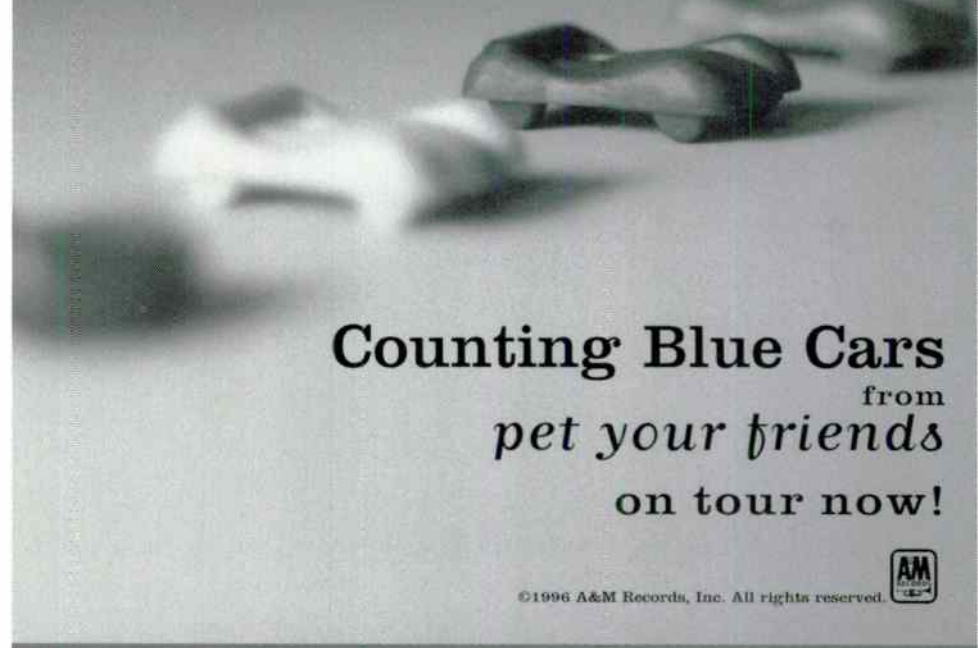
	TW	LW
1	41	36
2	39	35
3	38	37
4	35	34
5	35	30
6	33	27
7	33	29
8	32	30
9	32	30
10	29	25
11	29	24
12	26	22
13	26	22
14	26	22
15	26	22
16	25	22
17	25	22
18	25	22
19	24	21
20	24	24
21	24	24
22	24	21
23	24	17
24	24	17
25	24	17
26	24	17
27	24	17
28	24	17
29	24	17
30	24	17

KGDE
Omaha PD: Lynn Barstow

	TW	LW
1	41	36
2	41	36
3	37	37
4	38	38
5	38	35
6	38	38
7	38	31
8	33	32
9	33	27
10	32	29
11	32	34
12	32	31
13	32	31
14	32	33
15	31	36
16	31	24
17	31	30
18	31	31
19	31	30
20	31	30
21	28	29
22	28	29
23	28	29
24	28	29
25	28	29
26	28	29
27	28	29
28	28	29
29	28	29
30	28	29

DISHWALLA

Exploding at Active Radio!
WDRE/Philadelphia
KBBT/Portland
WRZX/Indianapolis - Way Early!



Counting Blue Cars
 from
 pet your friends
 on tour now!



©1996 A&M Records, Inc. All rights reserved.

JOSH CLAYTON-FELT
 WINDOW

The first track from the A&M debut album
 inarticulate nature boy



20+ STATIONS
 INCLUDING:
KDGE/Dallas
KNDD/Seattle
XHRM/San Diego
KROX/Austin
WDRE/New York
WBRU/Providence

ON TOUR NOW



(Formerly of School Of Fish) ©1996 A&M Records, Inc. All rights reserved.

★ ★ ★ **AIRPOWER** ★ ★ ★
(Minimum 1,000 detections for the first time)

NO RECORDS QUALIFIED FOR AIRPOWER THIS WEEK

AIRPOWER BOUND

Total Plays/Gain

STABBING WESTWARD 953/12
What Do I Have To Do? (Columbia)

Total Stations: 58/Chart Move: 23-22
Heavy (30+ plays): 3 KBBT, KEDG, WRLG
Medium (15-29): 33 KEDJ, KEGE, KFRR, KISF, KITS, KKND, KLZR, KMYZ, KNRK, KPNT, KRRK, KTBZ, KTEG, KTOZ, KXKR, WBCN, WBRU, WCHZ, WCYY, WEDG, WEND, WENZ, WFNX, WKQX, WNNX, WOWW, WPBZ, WPLA, WQXA, WROX, WRXQ, WVGO, WDXD
Light (Under 15): 22
New Airplay This Week: 2 CIMX, WKOC

RUBY 872/106
Tiny Meat (Creation/Work)

Total Stations: 64/Chart Move: 27-23
Heavy (30+): 5 KEGE, WFNX, WOWW, WPBZ, WVGO
Medium (15-29): 22 CIMX, KBBT, KGDE, KEDJ, KITS, KKND, KLZR, KMYZ, KOME, KWOD, KXKR, WBCN, WBRU, WDRE, WEDG, WEND, WENZ, WQXA, WRLG, WROX, WRXQ, WXNU
Light (Under 15): 37
New Airplay This Week: 5 KPNT, WAQZ, WBCN, WEQX, WNVF

SON VOLT 816/72
Drown (Warner Bros.)

Total Stations: 46/Chart Move: 28-25
Heavy (30+): 5 KGDE, KRRK, WOWW, WRXQ, WXNU
Medium (15-29): 24 KBBT, KEGE, KISF, KKND, KLZR, KMYZ, KNDD, KNRK, KPNT, KTEG, KTOZ, WCHZ, WCYY, WEND, WENZ, WEQX, WGRD, WJRR, WNNX, WQXA, WROX, WSHE, WDXD, WZRH
Light (Under 15): 17
New Airplay This Week: 2 KTCL, XHRM

SMASHING PUMPKINS 772/185
Zero (Virgin)

Total Stations: 49/Chart Move: 33-27
Heavy (30+): 9 CIMX, KEDG, KLZR, KNDD, KROQ, KRRK, WBRU, WCYY, WPLA
Medium (15-29): 13 KBBT, KEDJ, KEGE, KGDE, KITS, KKND, KNNC, KOME, WJRR, WKQX, WNNX, WOWW, WRLG
Light (Under 15): 27
New Airplay This Week: 12 KBBT, KEDG, KNRK, WEND, WJRR, WMMS, WMRQ, WPBZ, WQXA, WRLG, WXNU, WZRH

TOADIES 762/48
Away (Interscope)

Total Stations: 49/Chart Move: 29-28
Heavy (30+): 2 KDGE, KLZR
Medium (15-29): 25 KBBT, KEDG, KEGE, KISF, KKND, KMYZ, KNDD, KNNC, KNRK, KRRK, KTEG, KTOZ, KXKR, WCYY, WENZ, WEQX, WJRR, WKQX, WNVF, WOWW, WPBZ, WRXZ, WDXD, WXNU, WZRH
Light (Under 15): 22
New Airplay This Week: 2 KPNT, KTEG

BUSH 710/153
Machinhead (Trauma/Interscope)

Total Stations: 42/Chart Move: 35-29
Heavy (30+): 3 CIMX, KGDE, WKQX
Medium (15-29): 21 KEDJ, KEGE, KFRR, KITS, KMYZ, KNDD, KOME, KPNT, KROQ, WBCN, WCYY, WEDG, WJRR, WOWW, WPBZ, WPLA, WQXA, WROX, WVGO, WDXD, WXNU
Light (Under 15): 18
New Airplay This Week: 6 KEDG, KKND, KMYZ, WEND, WKOC, WQXA

OASIS 683/159
Champagne Supernova (Epic)

Total Stations: 48/Chart Move: 37-30
Heavy (30+): 2 CIMX, KNDD
Medium (15-29): 23 KBBT, KGDE, KEDJ, KEGE, KFRR, KITS, KKND, KNRK, KOME, KPNT, KRRK, WBCN, WEND, WFNX, WHFS, WHYT, WKOC, WKQX, WMRQ, WNNX, WOWW, WROX, WXRK

Light (Under 15): 23
New Airplay This Week: 6 KLZR, KRRK, KTBZ, WEND, WOWW, WWCD

JARS OF CLAY 649/196
Flood (Essential/Silvertone)

Total Stations: 44/Chart Move: Debut 31
Heavy (30+): 5 KBBT, KNDD, KTOZ, KXPK, WCHZ
Medium (15-29): 17 KCXX, KISF, KITS, KKND, KTCL, KXKR, WEND, WENZ, WEQX, WGRD, WNNX, WOWW, WQXA, WRXQ, WXNU, WZRH, XHRM
Light (Under 15): 22
New Airplay This Week: 10 KEDG, KISF, KKND, KTCL, WLUM, WPLA, WQXA, WRLG, WXNU, XHRM

DOG'S EYE VIEW 577/78
Everything Falls Apart (Columbia)

Total Stations: 37/Chart Move: 39-34
Heavy (30+): 3 WAQZ, WHYT, WPBZ
Medium (15-29): 19 KLZR, KMYZ, KTOZ, KXPK, WBRU, WCHZ, WEND, WENZ, WEQX, WGRD, WLUM, WMMS, WOWW, WQXA, WRXQ, WSHE, WWCD, WZRH, XHRM
Light (Under 15): 15
New Airplay This Week: 1 WDRE

3 LB. THRILL 572/73
Diana (57/550 Music)

Total Stations: 36/Chart Move: 38-35
Heavy (30+): 2 KRRK, WPBZ
Medium (15-29): 18 KBBT, KEDJ, KEGE, KGDE, KKND, KNDD, KWOD, WBRU, WCHZ, WEND, WGRD, WJRR, WNVF, WPLA, WRXZ, WVGO, WXNU, WZRH
Light (Under 15): 16
New Airplay This Week: 3 KEDJ, KMYZ, WQXA

GRAVITY KILLS 533/95
Guilty (TVT)

Total Stations: 49/Chart Move: Debut 38
Heavy (30+): 2 KGDE, WPLA
Medium (15-29): 12 KBBT, KGDE, KEDJ, KEGE, KFRR, KITS, KLZR, KMYZ, KNNC, KXKR, WOWW, WRLG
Light (Under 15): 35
New Airplay This Week: 8 KNRK, WBCN, WEND, WENZ, WEQX, WGRD, WQXA, WRXQ

CHART BOUND

PEARL JAM 471/345
Leaving Here (Epic)

Total Stations: 46
Heavy (30+): 1 WRXQ
Medium (15-29): 11 KEDJ, KNNC, KTEG, KWOD, WEDG, WEND, WGRD, WNVF, WPBZ, WRLG, XTRA
Light (Under 15): 34
New Airplay This Week: 19 KBBT, KEDJ, KEGE, KLZR, KNDD, KNRK, KPNT, KRRK, KTBZ, KTEG, KTOZ, KWOD, WBCN, WEND, WGRD, WNNX, WNVF, WPLA, WRLG

THE NIXONS 399/78
Sister (MCA)

Total Stations: 28
Heavy (30+): 2 KGDE, WOWW
Medium (15-29): 10 KCXX, KISF, KLZR, KTBZ, KTOZ, WCYY, WEND, WGRD, WDXD, WZRH
Light (Under 15): 16
New Airplay This Week: 7 WAQZ, WCHZ, WEND, WENZ, WLUM, WMRQ, WQXA

THE AFGHAN WHIGS 349/217
Honky's Ladder (Sub Pop/Elektra/EEG)

Total Stations: 45
Heavy (30+): 0
Medium (15-29): 5 KKND, KRRK, WAQZ, WOXY, WROX

MOST NEW AIRPLAY THIS WEEK

No. Of Stations

AFGHAN WHIGS <i>Honky's Ladder (Sub Pop/Elektra/EEG)</i>	19
PEARL JAM <i>Leaving Here (Epic)</i>	19
SMASHING PUMPKINS <i>Zero (Virgin)</i>	12
BAD RELIGION <i>A Walk (Atlantic)</i>	10
JARS OF CLAY <i>Flood (Essential/Silvertone)</i>	10
GRAVITY KILLS <i>Guilty (TVT)</i>	8

Light (Under 15): 40
New Airplay This Week: 19 KGDE, KISF, KITS, KKND, KPNT, KRRK, WBRU, WCHZ, WENZ, WEQX, WFNX, WPBZ, WQXA, WRLG, WROX, WRXQ, WVGO, WZRH, XTRA

RUST 338/65
Not Today (Atlantic)

Total Stations: 29
Heavy (30+): 2 KRRK, XTRA
Medium (15-29): 11 KBBT, KEGE, KISF, KLZR, KNDD, KNRK, KTBZ, KXKR, WGRD, WOWW, WXNU
Light (Under 15): 16
New Airplay This Week: 2 KXKR, WEQX

SILVERCHAIR 337/35
Israel's Son (Epic)

Total Stations: 35
Heavy (30+): 0
Medium (15-29): 6 KNNC, KXKR, WCHZ, WOWW, WRLG, WXNU
Light (Under 15): 29
New Airplay This Week: 4 KEDG, WEND, WKOC, WRLG

BAD RELIGION 327/135
A Walk (Atlantic)

Total Stations: 42
Heavy (30+): 1 WKQX
Medium (15-29): 5 KNDD, KNNC, KNRK, WGRD, WROX
Light (Under 15): 36
New Airplay This Week: 10 CIMX, KBBT, KNRK, WFNX, WGRD, WMRQ, WPLA, WROX, WDXD, WZRH

FRANK BLACK 299/10
Men In Black (American/Reprise)

Total Stations: 34
Heavy (30+): 1 KLZR
Medium (15-29): 8 KBBT, KNNC, KTEG, WBCN, WFNX, WOWW, WOXY, WRXZ
Light (Under 15): 25

SCHTUM 295/5
Skydiver (Work)

Total Stations: 31
Heavy (30+): 1 WFNX
Medium (15-29): 6 KNRK, KTEG, WBRU, WCYY, WOWW, XTRA
Light (Under 15): 24
New Airplay This Week: 2 KRRK, WXNU

ERIC MATTHEWS 291/19
Fanfare (Sub Pop)

Total Stations: 29
Heavy (30+): 0
Medium (15-29): 10 KBBT, KITS, KLZR, KNDD, WDRE, WEQX, WFNX, WNNX, WOWW, WROX
Light (Under 15): 19
New Airplay This Week: 3 KOME, KROQ, WGRD

GOD LIVES UNDERWATER 271/38
All Wrong (American/Reprise)

Total Stations: 25
Heavy (30+): 3 KGDE, KRRK, WPLA
Medium (15-29): 2 WEDG, WOWW
Light (Under 15): 20
New Airplay This Week: 2 WCHZ, WXNU

MINISTRY 265/46
Lay Lady Lay (Warner Bros.)

Total Stations: 32
Heavy (30+): 0
Medium (15-29): 4 CIMX, KNDD, KWOD, WFNX

Light (Under 15): 28
New Airplay This Week: 5 KMYZ, KOME, WKQX, WPBZ, WQXA

TRACY CHAPMAN 248/34
Give Me One Reason (Elektra/EEG)

Total Stations: 21
Heavy (30+): 0
Medium (15-29): 6 KWOD, WAQZ, WLUM, WNNX, WSHE, WXNU
Light (Under 15): 15
New Airplay This Week: 2 KTCL, WOWW

LIMBLIFTER 238/6
Screwed It Up (Mercury)

Total Stations: 22
Heavy (30+): 0
Medium (15-29): 6 CIMX, KBBT, KEGE, KNNC, WOWW, WPLA
Light (Under 15): 16
New Airplay This Week: 2 KEDG, WZRH

LOVE AND ROCKETS 231/156
Sweet Lover Hangover (American/Reprise)

Total Stations: 44
Heavy (30+): 0
Medium (15-29): 6 KITS, KWOD, KXKR, WNNX, WROX, XHRM
Light (Under 15): 38
New Airplay This Week: 4 WBRU, WKOC, WROX, WZRH

AIMEE MANN 216/8
Choice In The Matter (DGC/Geffen)

Total Stations: 22
Heavy (30+): 0
Medium (15-29): 5 WBRU, WENZ, WEQX, WOXY, XHRM
Light (Under 15): 17
New Airplay This Week: 1 WXNU

THE RENTALS 197/26
Waiting (Maverick/Reprise)

Total Stations: 23
Heavy (30+): 0
Medium (15-29): 3 KLZR, KTOZ, WENZ
Light (Under 15): 20
New Airplay This Week: 3 KEDG, KRRK, WOWW

COWBOY JUNKIES 166/50
A Common Disaster (Geffen)

Total Stations: 18
Heavy (30+): 0
Medium (15-29): 3 KWOD, KXPK, WMMS
Light (Under 15): 15
New Airplay This Week: 4 CIMX, KEGE, WAQZ, XHRM

WHITE ZOMBIE 164/2
Super-Charger Heaven (Geffen)

Total Stations: 21
Heavy (30+): 0
Medium (15-29): 1 CIMX
Light (Under 15): 20
New Airplay This Week: 2 WEDG, WZRH

SEVEN MARY THREE 161/33
Water's Edge (Mammoth/Atlantic)

Total Stations: 16
Heavy (30+): 0
Medium (15-29): 5 KNDD, KPNT, KWOD, WJRR, WDXD
Light (Under 15): 11
New Airplay This Week: 2 KTBZ, WCHZ

THE GOOPS 157/15
Vulgar Appetites (Kinetic/Reprise)

Total Stations: 21
Heavy (30+): 0
Medium (15-29): 3 WCYY, WENZ, WXNU
Light (Under 15): 18
New Airplay This Week: 1 WOWW

MELISSA ETHERIDGE 138/8
I Want To Come Over (Island)

Total Stations: 11
Heavy (30+): 0
Medium (15-29): 4 CKEY, KAEP, WRXQ, WSHE
Light (Under 15): 7
New Airplay This Week: 1 KTOZ

SOUL ASYLUM 134/17
Promises Broken (Columbia)

Total Stations: 8
Heavy (30+): 0
Medium (15-29): 5 WAQZ, WHYT, WPLY, WRXQ, WSHE
Light (Under 15): 3

THE BOGMEN 130/24
Suddenly (Arista)

Total Stations: 14
Heavy (30+): 0
Medium (15-29): 3 WENZ, WEQX, WQXA
Light (Under 15): 11
New Airplay This Week: 2 KMYZ, WOXY

★ **AMMONIA 129/88**
Drugs (Epic)

Total Stations: 26
Heavy (30+): 0
Medium (15-29): 3 WBCN, WNNX, WPLA
Light (Under 15): 23
New Airplay This Week: 5 KEDJ, KITS, KNDD, WBRU, WPLA

★ **PULP 127/45**
Common People (Island)

Total Stations: 18
Heavy (30+): 0
Medium (15-29): 4 KITS, KNDD, KXKR, XHRM
Light (Under 15): 14
New Airplay This Week: 2 WBRU, WZRH

SHOVELJERK 125/10
Unwind (Capricorn)

Total Stations: 11
Heavy (30+): 0
Medium (15-29): 4 KBBT, KNDD, KWOD, WDXD
Light (Under 15): 7

★ **LUSH 114/27**
Ladykillers (4AD/Reprise)

Total Stations: 19
Heavy (30+): 1 WFNX
Medium (15-29): 2 KNDD, KXKR
Light (Under 15): 16
New Airplay This Week: 2 WENZ, WOXY

★ **MR. MIRAINGA 111/48**
Baglady (Way Cool Music/MCA)

Total Stations: 14
Heavy (30+): 0
Medium (15-29): 1 WXNU
Light (Under 15): 13
New Airplay This Week: 4 KMYZ, KNNC, KNRK, WXNU

STING 110/18
Let Your Soul Be Your Pilot (A&M)

Total Stations: 12
Heavy (30+): 0
Medium (15-29): 2 KXPK, WSHE
Light (Under 15): 10
New Airplay This Week: 1 WCHZ

NATALIE MERCHANT 109/12
Jealousy (Elektra/EEG)

Total Stations: 8
Heavy (30+): 0
Medium (15-29): 4 KAEP, KTCL, KXPK, WLUM
Light (Under 15): 4

★ **LENNY KRAVITZ 104/23**
Can't Get You Off My Mind (Virgin)

Total Stations: 17
Heavy (30+): 0
Medium (15-29): 4 KBBT, KNNC, WMMS, XHRM
Light (Under 15): 13

★ **JOSH CLAYTON-FELT 100/12**
Window (A&M)

Total Stations: 14
Heavy (30+): 0
Medium (15-29): 2 KBBT, WBRU
Light (Under 15): 12
New Airplay This Week: 2 WDRE, WGRD

LOVE AND ROCKETS SWEET LOVE AND ROCKETS

Love And Rockets "Sweet Lover Hangover" The new single. The best hangover you've ever had.

Co-Produced by Sylvia Massey and Love And Rockets. From the distinctively pleasing new album: Sweet FA.

For the latest info about Love And Rockets and all other American Recordings artists, contact American Recordings on the Internet at <http://american.recordings.com> or e-mail us at american@american.recordings.com or on America Online - Keyword: Warner



#1 MOST ADDED AT ALTERNATIVE!

#1 PHONES!

**99X/Atlanta
91X/San Diego**

Management: Charlie Hewitt/Buzz International Group
© 1996 American Recordings



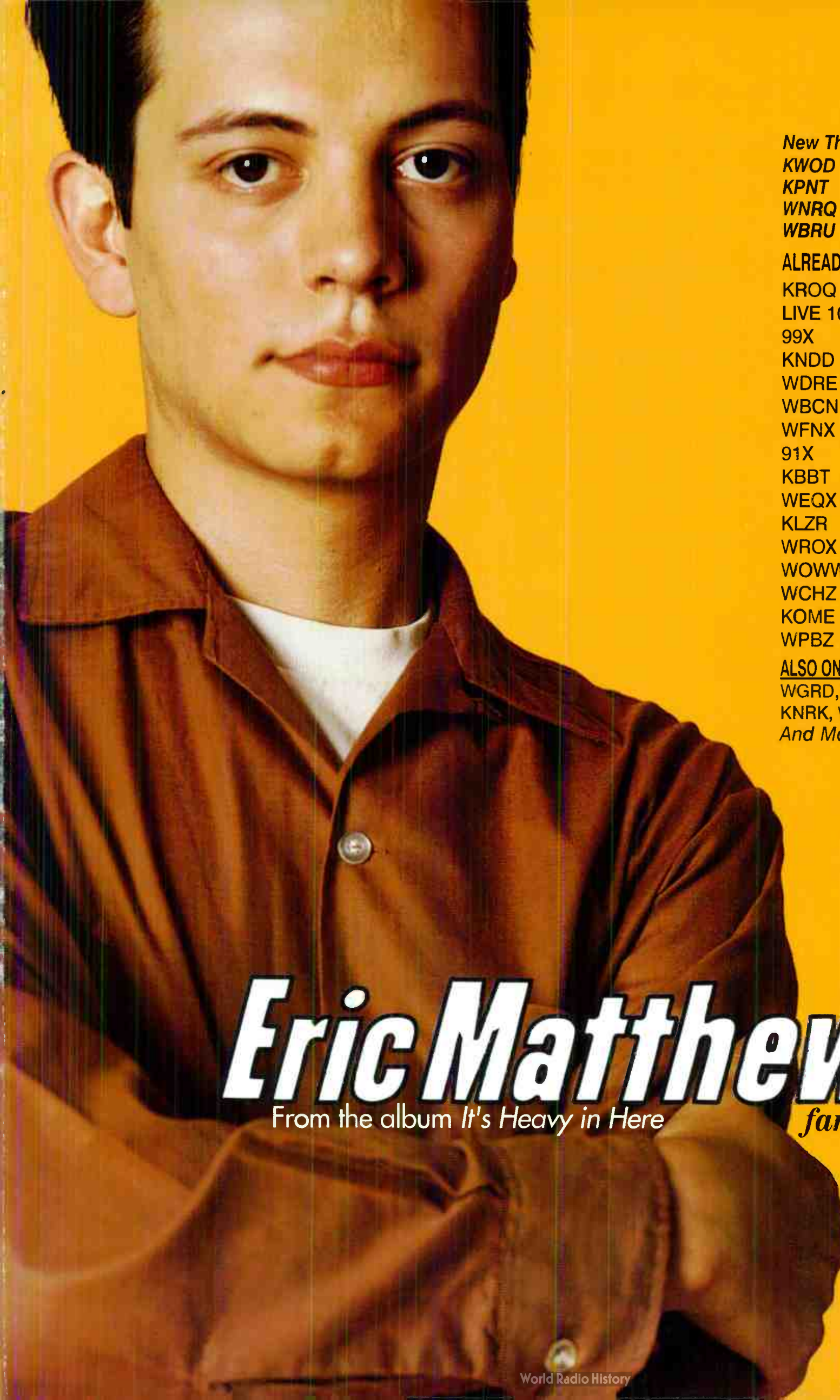
For Week Ending February 18, 1996

Detailed song tracking information for the last 3 weeks for all songs showing increased play this week. Total plays and gain do not include airplay. Markets listed in order of population.

Grid of song activity reports for artists like 3 LB. THRILL, THE AFGHAN WHIGS, ALICE IN CHAINS, TORI AMOS, BAD RELIGION, etc. Each entry includes station codes, chart moves, and play counts.

Grid of song activity reports for artists like FRANK BLACK, BUSH, DOG'S EYE VIEW, FOO FIGHTERS, GARBAGE, etc. Each entry includes station codes, chart moves, and play counts.

Grid of song activity reports for artists like GIN BLOSSOMS, GOD LIVES UNDERWATER, GRAVITY KILLS, JARS OF CLAY, ERIC MATTHEWS, etc. Each entry includes station codes, chart moves, and play counts.



New This Week At:

KWOD KCXX
KPNT WRXS
WNRQ WTGE
WBRU

ALREADY SPINNING ON:

KROQ 18X
LIVE 105 17X
99X 17X
KNDD 21X
WDRE 16X
WBCN 10X
WFNX 14X
91X 11X
KBBT 24X
WEQX 20X
KLZR 20X
WROX 17X
WOWW 16X
WCHZ 12X
KOME 10X
WPBZ 11X

ALSO ON: KTBZ, WOXY
WGRD, WLUM, KTOZ
KNRK, WAQZ, WKOC
And More!

Eric Matthews

From the album *It's Heavy in Here*

fanfare

Detailed song tracking information for the last 3 weeks for all songs showing increased play this week. Total plays and gain do not include video play. Markets listed in order of population.

MINISTRY 265/46

Lay Lady Lay (Warner Bros.)

Table with columns for Market, Station, and Song Activity for MINISTRY.

THE NIXONS 399/78

Sister (MCA)

Table with columns for Market, Station, and Song Activity for THE NIXONS.

OASIS 683/159

Champagne Supernova (Epic)

Table with columns for Market, Station, and Song Activity for OASIS.

PEARL JAM 471/345

Leaving Here (Epic)

Table with columns for Market, Station, and Song Activity for PEARL JAM.

THE PRESIDENTS OF THE UNITED STATES 1500/31

Peaches (Columbia)

Table with columns for Market, Station, and Song Activity for THE PRESIDENTS OF THE UNITED STATES.

RUBY 872/106

Tiny Meat (Creation/Work)

Table with columns for Market, Station, and Song Activity for RUBY.

RUST 338/65

Not Today (Atlantic)

Table with columns for Market, Station, and Song Activity for RUST.

SALT 958/0

Bluster (Island)

Table with columns for Market, Station, and Song Activity for SALT.

SCHTUM 295/5

Skydiver (Work)

Table with columns for Market, Station, and Song Activity for SCHATUM.

SILVERCHAIR 337/35

Israel's Son (Epic)

Table with columns for Market, Station, and Song Activity for SILVERCHAIR.

SMASHING PUMPKINS 772/185

Zero (Virgin)

Table with columns for Market, Station, and Song Activity for SMASHING PUMPKINS.

SON VOLT 816/72

Drown (Warner Bros.)

Table with columns for Market, Station, and Song Activity for SON VOLT.

SPACEHOG 1657/12

In The Meantime (HiFi/Sire/EEG)

Table with columns for Market, Station, and Song Activity for SPACEHOG.

STABBING WESTWARD 953/12

What Do I Have To Do? (Columbia)

Table with columns for Market, Station, and Song Activity for STABBING WESTWARD.

TOADIES 762/48

Away (Interscope)

Table with columns for Market, Station, and Song Activity for TOADIES.

POWER PLAYLISTS™

WNEW			WXRT			KFOG		
New York PD: Ted Edwards MD: Amy Winslow			Chicago VP: Programming, Norm Winner MD: Patty Martin			San Francisco PD: Paul Marszalek MD: Bill Evans		
TW	LW		TW	LW		TW	LW	
1	22	20	1	14	13	1	14	13
2	21	19	2	12	12	2	12	12
3	20	20	3	12	12	3	12	12
4	20	21	4	12	12	4	12	12
5	20	21	5	12	12	5	12	12
6	20	21	6	12	12	6	12	12
7	20	21	7	12	12	7	12	12
8	20	21	8	12	12	8	12	12
9	20	21	9	12	12	9	12	12
10	20	21	10	12	12	10	12	12
11	20	21	11	12	12	11	12	12
12	20	21	12	12	12	12	12	12
13	20	21	13	12	12	13	12	12
14	20	21	14	12	12	14	12	12
15	20	21	15	12	12	15	12	12
16	20	21	16	12	12	16	12	12
17	20	21	17	12	12	17	12	12
18	20	21	18	12	12	18	12	12
19	20	21	19	12	12	19	12	12
20	20	21	20	12	12	20	12	12
21	20	21	21	12	12	21	12	12
22	20	21	22	12	12	22	12	12
23	20	21	23	12	12	23	12	12
24	20	21	24	12	12	24	12	12
25	20	21	25	12	12	25	12	12
26	20	21	26	12	12	26	12	12
27	20	21	27	12	12	27	12	12
28	20	21	28	12	12	28	12	12
29	20	21	29	12	12	29	12	12
30	20	21	30	12	12	30	12	12

KSCA			WHPT			KBCO		
Los Angeles PD: Mike Morrison MD: Merilee Kelly			Tampa PD: Chuck Beck APD/MD: Chris Taylor			Denver PD: Mike O'Connor MD: Scott Arbough		
TW	LW		TW	LW		TW	LW	
1	22	22	1	27	27	1	31	31
2	22	25	2	31	30	2	30	29
3	22	21	3	31	29	3	28	27
4	22	20	4	30	28	4	27	26
5	22	20	5	29	27	5	26	25
6	22	20	6	28	26	6	25	24
7	22	20	7	27	25	7	24	23
8	22	20	8	26	24	8	23	22
9	22	20	9	25	23	9	22	21
10	22	20	10	24	22	10	21	20
11	22	20	11	23	21	11	20	19
12	22	20	12	22	20	12	19	18
13	22	20	13	21	19	13	18	17
14	22	20	14	20	18	14	17	16
15	22	20	15	19	17	15	16	15
16	22	20	16	18	16	16	15	14
17	22	20	17	17	15	17	14	13
18	22	20	18	16	14	18	13	12
19	22	20	19	15	13	19	12	11
20	22	20	20	14	12	20	11	10
21	22	20	21	13	11	21	10	9
22	22	20	22	12	10	22	9	8
23	22	20	23	11	9	23	8	7
24	22	20	24	10	8	24	7	6
25	22	20	25	9	7	25	6	5
26	22	20	26	8	6	26	5	4
27	22	20	27	7	5	27	4	3
28	22	20	28	6	4	28	3	2
29	22	20	29	5	3	29	2	1
30	22	20	30	4	2	30	1	0

KTCZ			CIDR			KMTT		
Minneapolis PD: Lauren MacLeash MD: Jane Fredricksen			Detroit PD: Murray Brookshaw MD: Ann Delisi			Seattle PD: Chris Mays MD: Dean Carlson		
TW	LW		TW	LW		TW	LW	
1	23	20	1	37	37	1	15	15
2	22	18	2	36	36	2	16	16
3	21	9	3	35	35	3	17	17
4	20	16	4	34	34	4	18	18
5	20	16	5	33	33	5	19	19
6	20	16	6	32	32	6	20	20
7	20	16	7	31	31	7	21	21
8	20	16	8	30	30	8	22	22
9	20	16	9	29	29	9	23	23
10	20	16	10	28	28	10	24	24
11	20	16	11	27	27	11	25	25
12	20	16	12	26	26	12	26	26
13	20	16	13	25	25	13	27	27
14	20	16	14	24	24	14	28	28
15	20	16	15	23	23	15	29	29
16	20	16	16	22	22	16	30	30
17	20	16	17	21	21	17	31	31
18	20	16	18	20	20	18	32	32
19	20	16	19	19	19	19	33	33
20	20	16	20	18	18	20	34	34
21	20	16	21	17	17	21	35	35
22	20	16	22	16	16	22	36	36
23	20	16	23	15	15	23	37	37
24	20	16	24	14	14	24	38	38
25	20	16	25	13	13	25	39	39
26	20	16	26	12	12	26	40	40
27	20	16	27	11	11	27	41	41
28	20	16	28	10	10	28	42	42
29	20	16	29	9	9	29	43	43
30	20	16	30	8	8	30	44	44

THIS WEEK	LAST WEEK	WKS. ON CHART	TITLE/LABEL/DISTRIBUTING LABEL	ARTIST	DETECTIONS	
					TW	LW
			*** No. 1 ***			
1	1	4	FOLLOW YOU DOWN A&M	G N BLOSSOMS	342	329
2	2	7	THE WORLD I KNOW ATLANTIC	COLLECTIVE SOUL	274	329
3	4	7	GIVE ME ONE REASON ELEKTRA/EEG	TRACY CHAPMAN	268	250
4	6	6	CAUGHT A LITE SNEEZE ATLANTIC	TORI AMOS	259	233
5	3	7	1979 VIRGIN	SMASHING PUMPKINS	244	254
6	9	7	WONDERWALL EPIC	OASIS	228	200
7	8	5	IRONIC MAVERICK/REPRISE	ALANIS MORISSETTE	210	201
8	NEW		A COMMON DISASTER GEFEN	COWBOY JUNKIES	209	140
9	14	3	EVERYTHING FALLS APART COLUMBIA	DOG'S EYE VIEW	205	168
10	20	3	FLOOD ESSENTIAL/SILVERTONE	JARS OF CLAY	205	145
11	5	7	I WANT TO COME OVER ISLAND	MELISSA ETHERIDGE	202	240
12	11	4	SOME BRIDGES ELEKTRA/EEG	JACKSON BROWNE	201	184
13	16	2	LET YOUR SOUL BE YOUR PILOT A&M	STING	200	160
14	7	7	WAITING FOR TONIGHT MCA	TOM PETTY & THE HEARTBREAKERS	193	226
15	10	6	JEALOUSY ELEKTRA/EEG	NATALIE MERCHANT	190	185
16	13	7	SATELLITE RCA	DAVE MATTHEWS BAND	177	170
17	17	3	LADDER MERCURY	JOAN OSBORNE	155	156
18	12	6	FEAR OF FALLING ATLAS/A&M	THE BADLEES	149	175
19	NEW		BROTHER COLUMBIA	TOAD THE WET SPROCKET	139	130
20	19	3	DROWN WARNER BROS	SON VOLT	133	151

Records showing an increase in detections over the previous week, regardless of chart movement. A record which has been on the chart for more than 20 weeks will not receive a bullet, even if it registers an increase in detections. If two records are tied in number of plays, the record being played on more stations is placed first. ©1996, Billboard/BPI Communications.

KQPT			WVRV			KZON		
Sacramento PD: Jim Trapp MD: Carrie Owens			St. Louis PD: Scott Strong MD: Mike Richter			Phoenix PD: Chris Ebbott MD: Erka Smith		
TW	LW		TW	LW		TW	LW	
1	20	18	1	33	29	1	30	26
2	20	17	2	32	29	2	29	25
3	20	19	3	31	29	3	28	26
4	20	19	4	30	29	4	27	26
5	20	19	5	29	29	5	26	25
6	20	19	6	28	29	6	25	25
7	20	19	7	27	29	7	24	22
8	20	19	8	26	29	8	23	26
9	20	19	9	25	29	9	22	26
10	20	19	10	24	29	10	21	26
11	20	19	11	23	29	11	20	26
12	20	19	12	22	29	12	19	26
13	20	19	13	21	29	13	18	26
14	20	19	14	20	29	14	17	26
15	20	19	15	19	29	15	16	26
16	20	19	16	18	29	16	15	26
17	20	19	17	17	29	17	14	26
18	20	19	18	16	29	18	13	26
19	20	19	19	15	29	19	12	26
20	20	19	20	14	29	20	11	26
21	20	19	21	13	29	21	10	26
22	20	19	22	12	29	22	9	26
23	20	19	23	11	29	23	8	26
24	20	19	24	10	29	24	7	26
25	20	19	25	9	29	25	6	26
26	20	19	26	8	29	26	5	26
27	20	19	27	7	29	27	4	26
28	20	19	28	6	29	28	3	26
29	20	19	29	5	29	29	2	26
30	20	19	30	4	29	30	1	26

STEVE EARLE
"More Than I Can Do"
From the album: *I Feel Alright*
ON YOUR DESK FEBRUARY 21.

© 1996 Warner Bros. Records Inc.

For Week Ending February 18, 1996

COMBINED ROCK MONITOR AIRPLAY										AIRPLAY THIS WEEK BY FORMAT									
TW	LW	WKS	TITLE (LABEL)	ARTIST	THIS WEEK			LAST WEEK			MAINSTREAM			MODERN			TRIPLE A		
					Audience (millions)	Detections No.	Rank	Audience (millions)	Detections No.	Rank	Audience (millions)	Detections No.	Rank	Audience (millions)	Detections No.	Rank	Audience (millions)	Detections No.	Rank
1	1	17	1979 (VIRGIN)	SMASHING PUMPKINS	34.9971	4032	1	35.1427	4054	1	14.5771	1894	1	18.7808	1894	1	1.6392	244	5
2	4	14	SANTA MONICA (WATCH THE WORLD DIE) (TIM KERR/CAPITOL)	EVERCLEAR	28.6252	3343	3	27.4927	3299	4	13.4199	1648	4	15.1161	1674	5	0.0892	21	—
3	2	17	THE WORLD I KNOW (ATLANTIC)	COLLECTIVE SOUL	27.3826	3271	4	29.5045	3634	2	14.5107	1728	2	11.2637	1269	16	1.6082	274	2
4	6	11	BRAIN STEW/JADED (REPRISE)	GREEN DAY	27.2745	3054	8	27.0229	2992	10	10.8270	1224	12	16.4452	1824	3	0.0023	6	—
5	3	15	WONDERWALL (EPIC)	OASIS	27.0860	3393	2	28.1815	3522	3	8.5977	1284	11	16.3923	1881	2	2.0960	228	6
6	7	21	CUMBERSOME (MAMMOTH/ATLANTIC)	SEVEN MARY THREE	26.2622	2905	9	26.9763	3133	6	14.2352	1648	3	11.7613	1201	18	0.2657	56	—
7	8	11	HEAVEN BESIDE YOU (COLUMBIA)	ALICE IN CHAINS	24.9327	3208	6	25.3698	3169	5	12.3418	1531	6	12.5498	1664	6	0.0411	13	—
8	10	12	IN THE MEANTIME (HIFI/SIRE/EEG)	SPACEHOG	24.8008	3137	7	22.8756	3008	9	11.5836	1382	7	12.6509	1657	7	0.5663	98	—
9	5	13	I GOT ID (EPIC)	PEARL JAM	24.4210	2746	12	27.3401	3041	8	13.2240	1586	5	11.0127	1133	19	0.1843	27	—
10	11	5	FOLLOW YOU DOWN (A&M)	GIN BLOSSOMS	22.1940	3229	5	20.2459	2974	11	8.5749	1300	10	10.5486	1587	8	3.0705	342	1
11	9	17	GLYCERINE (TRAUMA/INTERSCOPE)	BUSH	21.9656	2810	10	24.1284	3081	7	9.3295	1382	8	12.4086	1386	14	0.2275	42	—
12	12	9	NAKED (METAL BLADE/WARNER BROS.)	GOO GOO DOLLS	20.3512	2773	11	18.5536	2628	12	9.2586	1192	13	10.9207	1537	9	0.1719	44	—
13	15	7	IRONIC (MAVERICK/REPRISE)	ALANIS MORISSETTE	17.9089	2488	13	16.5082	2392	14	2.0329	458	36	14.1187	1820	4	1.7573	210	7
14	13	6	AEROPLANE (WARNER BROS.)	RED HOT CHILI PEPPERS	17.8662	2454	14	17.4754	2400	13	6.9640	876	16	10.6970	1537	10	0.2052	41	—
15	14	19	NATURAL ONE (LONDON/ISLAND)	FOLK IMPLOSION	16.6974	2090	16	16.8214	2102	15	5.3481	709	20	10.9216	1304	15	0.4277	77	—
16	17	5	BIG ME (ROSWELL/CAPITOL)	FOO FIGHTERS	16.2744	2094	15	14.6523	1820	17	3.7945	546	33	11.8692	1468	12	0.6107	80	—
17	24	3	MACHINEHEAD (TRAUMA/INTERSCOPE)	BUSH	15.0312	1361	28	12.3799	1012	40	7.6525	651	25	7.3787	710	29	—	—	—
18	16	28	POSSUM KINGDOM (INTERSCOPE)	TOADIES	14.7370	1563	21	15.6444	1604	19	6.7948	732	—	7.9407	827	—	0.0015	4	—
19	18	4	PEACHES (COLUMBIA)	THE PRESIDENTS OF THE UNITED STATES OF AMERICA	14.0347	2067	17	14.0958	1894	16	4.0874	561	30	9.9450	1500	11	0.0023	6	—
20	20	13	JUST A GIRL (TRAUMA/INTERSCOPE)	NO DOUBT	13.6107	1553	22	13.1606	1527	22	0.8148	131	—	12.7125	1403	13	0.0834	19	—
21	19	28	NAME (METAL BLADE/WARNER BROS.)	GOO GOO DOLLS	13.0428	1492	24	13.3651	1543	21	6.0447	764	17	6.0187	600	—	0.9794	128	—
22	22	5	WHAT DO I HAVE TO DO? (COLUMBIA)	STABBING WESTWARD	12.5864	1687	18	12.3987	1610	18	5.7439	730	19	6.8402	953	22	0.0023	4	—
23	29	4	ZERO (VIRGIN)	SMASHING PUMPKINS	11.6180	1077	36	10.2173	814	51	4.1256	305	—	7.4924	772	27	—	—	—
24	21	8	SEE YOU ON THE OTHER SIDE (EPIC)	OZZY OSBOURNE	11.4682	1377	27	12.9666	1557	20	11.4682	1377	9	—	—	—	—	—	—
25	26	28	COMEDOWN (TRAUMA/INTERSCOPE)	BUSH	11.4346	1132	33	11.1480	1143	35	5.7405	589	—	5.6735	537	—	0.0206	6	—
26	27	3	CAUGHT A LITE SNEEZE (ATLANTIC)	TORI AMOS	11.2556	1576	20	11.1001	1488	23	0.3638	56	—	8.3604	1261	17	2.5314	259	4
27	25	20	BULLET WITH BUTTERFLY WINGS (VIRGIN)	SMASHING PUMPKINS	10.9123	1132	34	11.7978	1246	29	4.6562	518	34	6.2505	609	33	0.0056	5	—
28	28	28	TOMORROW (EPIC)	SILVERCHAIR	10.8920	1149	31	10.7571	1170	33	5.2716	596	—	5.6204	553	—	—	—	—
29	23	23	MY FRIENDS (WARNER BROS.)	RED HOT CHILI PEPPERS	10.3086	1215	30	12.3928	1407	25	5.2949	629	26	4.3232	488	40	0.6905	98	—
30	31	4	AWAY (INTERSCOPE)	TOADIES	10.1037	1432	25	9.3622	1330	28	5.0432	670	24	5.0605	762	28	—	—	—
31	33	2	EVERYTHING FALLS APART (COLUMBIA)	DOG'S EYE VIEW	9.8865	1525	23	8.9926	1330	27	4.8008	743	18	3.2178	577	34	1.8679	205	9
32	34	2	DROWN (WARNER BROS.)	SON VOLT	9.6657	1619	19	8.5327	1486	24	4.4179	670	23	3.9035	816	25	1.3443	133	20
33	36	2	SISTER (MCA)	THE NIXONS	9.1226	1424	26	8.3437	1342	26	7.4637	1023	15	1.5762	399	—	0.0827	2	—
34	RE-ENTRY		INTERSTATE LOVE SONG (ATLANTIC)	STONE TEMPLE PILOTS	8.9399	894	46	7.7466	818	50	4.3896	459	—	4.3298	415	—	0.2205	20	—
35	38	3	ONLY HAPPY WHEN IT RAINS (ALMO SOUNDS/GEFFEN)	GARBAGE	8.9233	1240	29	8.0638	1216	30	0.6882	95	—	8.1468	1126	20	0.0883	19	—
36	30	28	ALL OVER YOU (RADIOACTIVE/MCA)	LIVE	8.8524	925	44	9.4093	950	43	4.0289	454	—	4.7366	459	—	0.0869	12	—
37	35	2	BLUSTER (ISLAND)	SALT	8.6969	1134	32	8.4857	1092	38	1.4820	171	—	7.2124	958	21	0.0025	5	—
38	NEW		CHAMPAGNE SUPERNOVA (EPIC)	OASIS	8.5319	730	58	8.0236	544	92	0.3260	25	—	8.0525	683	30	0.1534	22	—
39	32	6	HIGH AND DRY (CAPITOL)	RADIOHEAD	8.3325	1074	37	9.2384	1206	31	1.1197	119	—	6.2818	835	24	0.9310	120	—
40	40	21	LIGHTNING CRASHES (RADIOACTIVE/MCA)	LIVE	7.9935	865	49	8.0268	940	44	3.3895	439	—	4.4244	401	—	0.1796	25	—

Records showing an increase in audience over the previous week, regardless of chart movement. Rankings broken down by mainstream, modern and triple A formats (on right side of this page) correspond to charts printed in this week's Monitor and therefore rankings do not exist for re-entries and records below No. 40 (No. 20 for triple A). Audience computed by cross-referencing exact times of airplay with Arbitron listener data. © 1996, Billboard/BPI Communications.

4 audiences for the price of one

For the cost of one classified insertion, your ad appears in four different publications:
Rock Monitor, R&B Monitor, Top 40 Monitor and Country Monitor.

FOUR FOR ONE ... GOOD DEAL

CONTACT MONITOR CLASSIFIED: LAURA RIVCHUN 212-536-5058

He'll drink all your beer.

He'll eat your last slice.

He wears tight pants.

He'll swear in front of your mother.

He'll tell your dad you get stoned.

He'll grab your sister's ass.

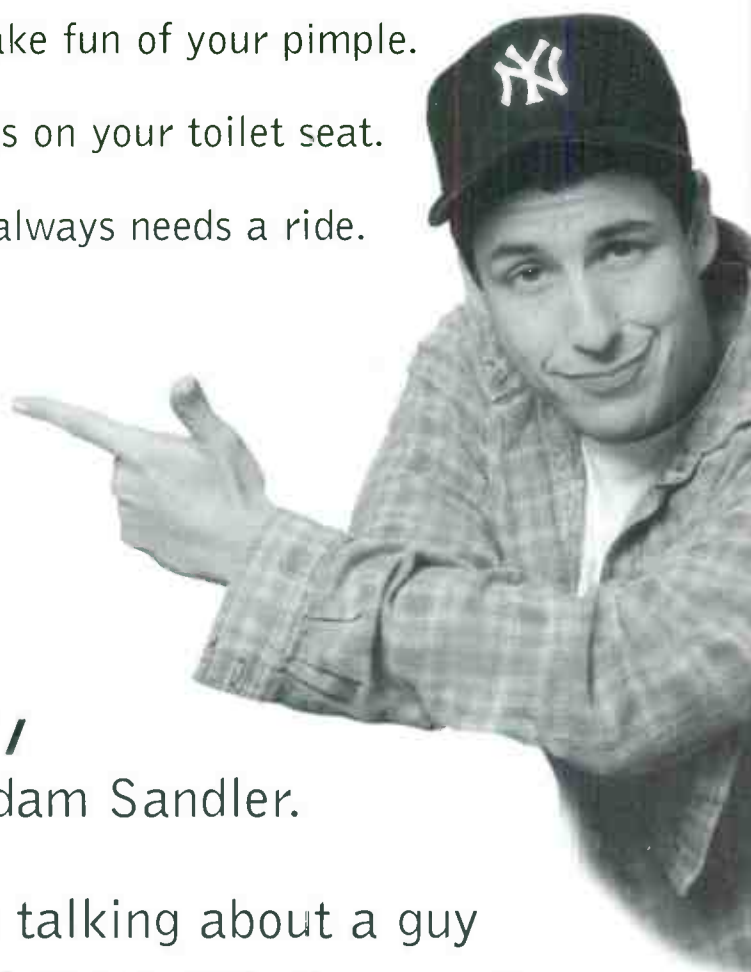
He'll break your brother's stereo.

He spits when he talks.

He'll make fun of your pimple.

He'll piss on your toilet seat.

And he always needs a ride.



No,
not Adam Sandler.

We're talking about a guy
named Steve Polychronopolous.

ADAM SANDLER "STEVE POLYCHRONOPOLOUS"

The new single.

From the new album:

WHAT THE HELL HAPPENED TO ME?



© 1996 Warner Bros. Records Inc.
<http://www.wbr.com/sandler>
<http://www.wbr.com/radio>

One Of The Ten Best Albums This Year.

-Rolling Stone Critics Poll



"DROWN"

THE DEBUT TRACK FROM THE ALBUM TRACE

(28) - (23) MAINSTREAM ROCK
705 SPINS!

(28) - (25) MODERN ROCK
840 SPINS!

3 FORMAT SMASH!

(34) - (32) BIG PICTURE
BILLBOARD HEATSEEKERS 24 - (23)
SOUNDCAN 4,387-25% INCREASE
FOR A TOTAL OF 61,952

ON OVER 140 ROCK STATIONS INCLUDING:

WNEW	WZTA	WBAB
WDVE	KILO	KYYS
KQRC	WEBN	WKLS
KISW	KDKB	WKDF
WAXQ	WFBQ	WFYV
KEGL	WMMR	WEGR
WXTB	WIYY	WCMF
KIOZ	KTXQ	WKLL

ROCK ADDS THIS WEEK:

KUFO	KCAL	WMFS	WIOT
WONE	KTAL	WQCM	WBYR

MODERN ROCK LEADERS INCLUDE:

99X	KNDD	WXDX	KMYZ
KPNT	WRXQ	KISF	KJEE
KLZR	WOXY	WGDE	WENZ
WEND	CFNY	KENZ	WQXA
KNRK	WXXW	WOWW	WQBK
	WGRD	KEGE	



ON ROTATION 120 MINUTES &
ALTERNATIVE NATION

THIS WEEK	LAST WEEK	WKS. ON CHART	MAINSTREAM		DETECTIONS		
			TITLE/LABEL/DISTRIBUTING LABEL	ARTIST	TW	LW	
			★ ★ ★ NO. 1 ★ ★ ★				
1	2	13	1979 VIRGIN	1 week at No. 1	SMASHING PUMPKINS	1894 1837	
2	1	17	THE WORLD I KNOW ATLANTIC		COLLECTIVE SOUL	1728 1905	
3	3	25	CUMBERSOME MAMMOTH/ATLANTIC		SEVEN MARY THREE	1648 1766	
4	6	11	SANTA MONICA (WATCH THE WORLD DIE) TIM KERR/CAPITOL		EVERCLEAR	1648 1535	
5	4	13	I GOT ID EPIC		PEARL JAM	1586 1735	
6	8	11	HEAVEN BESIDE YOU COLUMBIA		ALICE IN CHAINS	1531 1499	
7	9	12	IN THE MEANTIME HIFI/SIRE/EEG		SPACEHOG	1382 1288	
8	7	15	GLYCERINE TRAUMA/INTERSCOPE		BUSH	1382 1511	
9	5	11	SEE YOU ON THE OTHER SIDE EPIC		OZZY OSBOURNE	1377 1555	
10	12	4	FOLLOW YOU DOWN A&M		GIN BLOSSOMS	1300 1133	
11	10	9	WONDERWALL EPIC		OASIS	1284 1271	
12	11	10	BRAIN STEW/JADED REPRISE		GREEN DAY	1224 1158	
13	13	6	NAKED METAL BLADE/WARNER BROS.		GOO GOO DOLLS	1192 1050	
14	15	3	SHE'S JUST KILLING ME EPIC SOUNDTRAX/EPIC		ZZ TOP	1049 909	
15	14	7	SISTER MCA		THE NIXONS	1023 1018	
			★ ★ ★ AIRPOWER ★ ★ ★				
16	18	5	AEROPLANE WARNER BROS.		RED HOT CHILI PEPPERS	876 783	
17	19	26	NAME METAL BLADE/WARNER BROS.		GOO GOO DOLLS	764 757	
18	24	4	EVERYTHING FALLS APART COLUMBIA		DOG'S EYE VIEW	743 663	
19	23	4	WHAT DO I HAVE TO DO? COLUMBIA		STABBING WESTWARD	730 665	
20	22	6	NATURAL ONE LONDON/ISLAND		FOLK IMPLOSION	709 694	
21	16	13	WAITING FOR TONIGHT MCA		TOM PETTY & THE HEARTBREAKERS	707 857	
22	27	5	I WANT TO COME OVER ISLAND		MELISSA ETHERIDGE	678 611	
23	28	4	DROWN WARNER BROS.		SON VOLT	670 591	
24	26	5	AWAY INTERSCOPE		TOADIES	670 616	
25	34	2	MACHINEHEAD TRAUMA/INTERSCOPE		BUSH	651 455	
26	20	22	MY FRIENDS WARNER BROS.		RED HOT CHILI PEPPERS	629 716	
27	31	2	YOU DON'T KNOW ME AT ALL GEFLEN		DON HENLEY	624 521	
28	21	19	DEJA VOODOO GIANT		KENNY WAYNE SHEPHERD	622 700	
29	30	3	HANDS IN THE AIR CAPITOL		BOB SEGER & THE SILVER BULLET BAND	619 554	
30	36	2	PEACHES COLUMBIA		THE PRESIDENTS OF THE UNITED STATES OF AMERICA	561 417	
31	17	14	COVER YOU IN OIL EASTWEST/EEG		AC/DC	557 790	
32	32	3	VOICE OF EUJENA VIRGIN		BROTHER CANE	548 520	
33	NEW		BIG ME ROSWELL/CAPITOL		FOO FIGHTERS	546 396	
34	29	20	BULLET WITH BUTTERFLY WINGS VIRGIN		SMASHING PUMPKINS	518 587	
35	NEW		NOT TODAY ATLANTIC		RUST	461 342	
36	NEW		IRONIC MAVERICK/REPRISE		ALANIS MORISSETTE	458 332	
37	NEW		WATER'S EDGE MAMMOTH/ATLANTIC		SEVEN MARY THREE	435 372	
38	39	24	HARD AS A ROCK EASTWEST/EEG		AC/DC	420 408	
39	35	8	TIME ATLANTIC		HOOTIE & THE BLOWFISH	416 447	
40	40	21	PERRY MASON EPIC		OZZY OSBOURNE	400 406	

THIS WEEK	LAST WEEK	WKS. ON CHART	MODERN		DETECTIONS		
			TITLE/LABEL/DISTRIBUTING LABEL	ARTIST	TW	LW	
			★ ★ ★ NO. 1 ★ ★ ★				
1	2	15	1979 VIRGIN	1 week at No. 1	SMASHING PUMPKINS	1894 1963	
2	1	15	WONDERWALL EPIC		OASIS	1881 2051	
3	4	11	BRAIN STEW/JADED REPRISE		GREEN DAY	1824 1828	
4	3	9	IRONIC MAVERICK/REPRISE		ALANIS MORISSETTE	1820 1859	
5	5	17	SANTA MONICA (WATCH THE WORLD DIE) TIM KERR/CAPITOL		EVERCLEAR	1674 1750	
6	6	8	HEAVEN BESIDE YOU COLUMBIA		ALICE IN CHAINS	1664 1663	
7	7	13	IN THE MEANTIME HIFI/SIRE/EEG		SPACEHOG	1657 1645	
8	11	4	FOLLOW YOU DOWN A&M		GIN BLOSSOMS	1587 1512	
9	9	10	NAKED METAL BLADE/WARNER BROS.		GOO GOO DOLLS	1537 1537	
10	8	6	AEROPLANE WARNER BROS.		RED HOT CHILI PEPPERS	1537 1560	
11	12	5	PEACHES COLUMBIA		THE PRESIDENTS OF THE UNITED STATES OF AMERICA	1500 1469	
12	15	6	BIG ME ROSWELL/CAPITOL		FOO FIGHTERS	1468 1365	
13	13	16	JUST A GIRL TRAUMA/INTERSCOPE		NO DOUBT	1403 1408	
14	10	17	GLYCERINE TRAUMA/INTERSCOPE		BUSH	1386 1524	
15	16	20	NATURAL ONE LONDON/ISLAND		FOLK IMPLOSION	1304 1345	
16	14	16	THE WORLD I KNOW ATLANTIC		COLLECTIVE SOUL	1269 1400	
17	19	7	CAUGHT A LITE SNEEZE ATLANTIC		TORI AMOS	1261 1210	
18	17	19	CUMBERSOME MAMMOTH/ATLANTIC		SEVEN MARY THREE	1201 1284	
19	18	13	I GOT ID EPIC		PEARL JAM	1133 1278	
20	20	6	ONLY HAPPY WHEN IT RAINS ALMO SOUNDS/GEFFEN		GARBAGE	1126 1116	
21	22	5	BLUSTER ISLAND		SALT	958 958	
22	23	5	WHAT DO I HAVE TO DO? COLUMBIA		STABBING WESTWARD	953 941	
23	27	4	TINY MEAT CREATION/WORK		RUBY	872 766	
24	21	11	HIGH AND DRY CAPITOL		RADIOHEAD	835 983	
25	28	6	DROWN WARNER BROS.		SON VOLT	816 744	
26	24	12	RUBY SOHO EPITAPH		RANCID	777 902	
27	33	3	ZERO VIRGIN		SMASHING PUMPKINS	772 587	
28	29	5	AWAY INTERSCOPE		TOADIES	762 714	
29	35	2	MACHINEHEAD TRAUMA/INTERSCOPE		BUSH	710 657	
30	37	2	CHAMPAGNE SUPERNOVA EPIC		OASIS	683 124	
31	NEW		FLOOD ESSENTIAL/SILVERTONE		JARS OF CLAY	649 453	
32	26	13	MIGHTY K.C. 550 MUSIC		FOR SQUIRRELS	648 424	
33	30	20	BULLET WITH BUTTERFLY WINGS VIRGIN		SMASHING PUMPKINS	609 451	
34	39	3	EVERYTHING FALLS APART COLUMBIA		DOG'S EYE VIEW	577 499	
35	38	3	DIANA 57/550 MUSIC		3 LB. THRILL	572 499	
36	31	23	ONE OF US BLUE GORILLA/MERCURY		JOAN OSBORNE	560 641	
37	32	20	WONDER ELEKTRA/EEG		NATALIE MERCHANT	560 627	
38	NEW		GUILTY TVT		GRAVITY KILLS	533 438	
39	36	12	SATELLITE RCA		DAVE MATTHEWS BAND	521 549	
40	34	23	MY FRIENDS WARNER BROS.		RED HOT CHILI PEPPERS	488 585	

Records showing an increase in detections over the previous week, regardless of chart movement. A record which has been on either chart for more than 20 weeks will not receive a bullet, even if it registers an increase in detections. Airpower awarded to those records which attain 800 detections (mainstream) or 1000 (modern) for the first time. If two records are tied in number of plays, the record being played on more stations is placed first. Records below the top 20 are removed from the chart after 26 weeks.

"Kenny Wayne Shepherd may very well be the last chance the blues ever had to reach the youth. His skill and appeal make him the perfect ambassador..."

KENNY WAYNE SHEPHERD

"BORN WITH A BROKEN HEART"

—Tom Farrell

The follow-up to the breakthrough track "Deja Voodoo" from his debut album *Ledbetter Heights*.

Produced and Engineered by David E. Mindy by Sam Lind-Rign. Management: Sam Shepherd Management. National tour begins March 12. Video directed by Ian Fletcher. Airing soon in your market.

